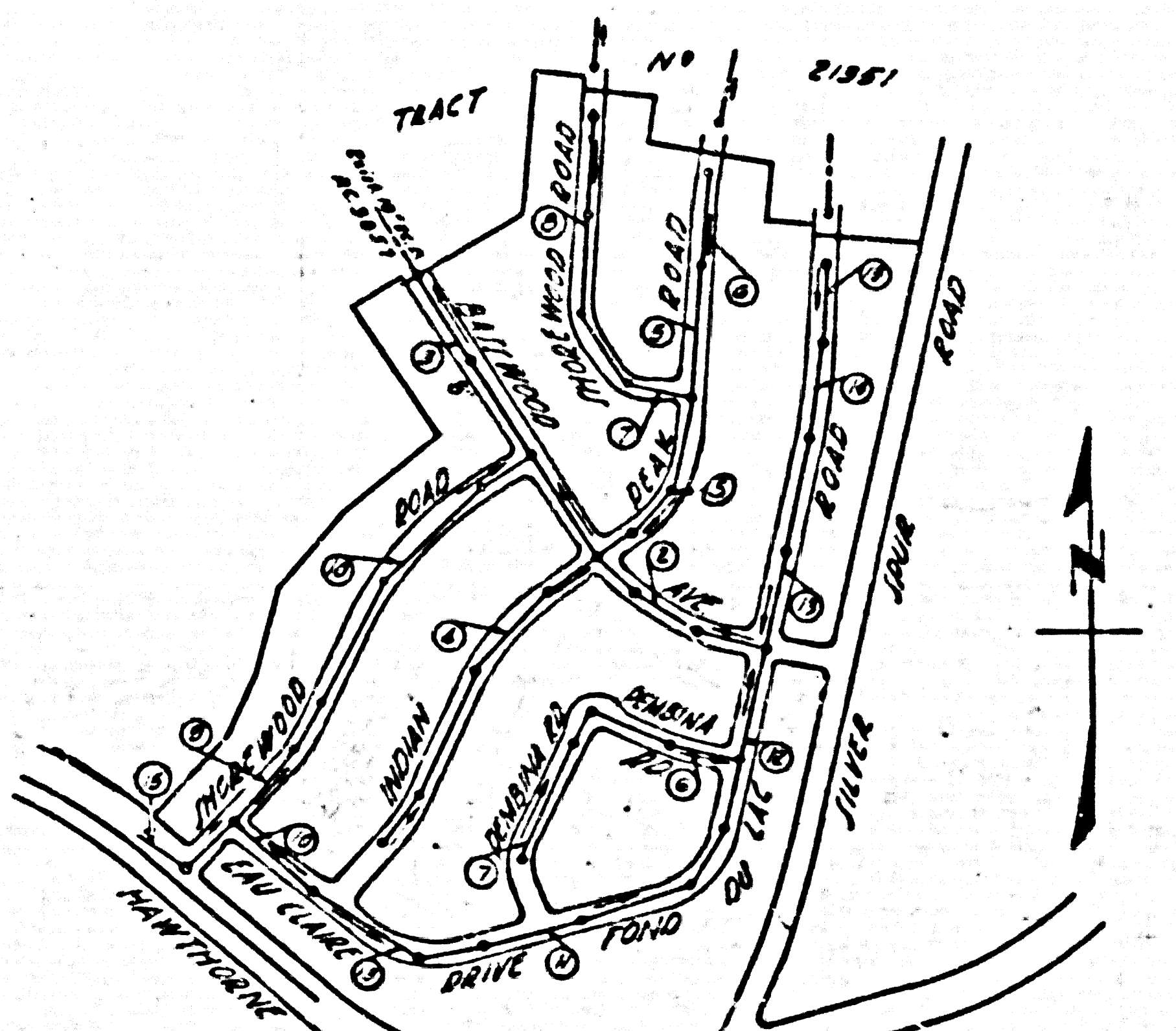
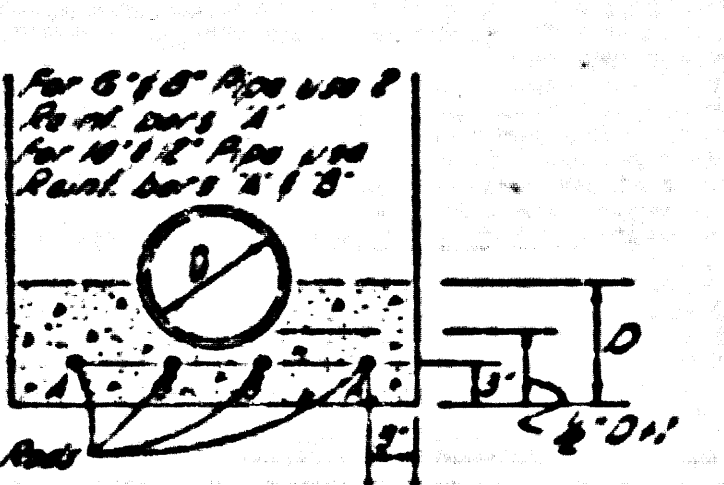


County Surveyor B.M. U.S.C.G.S. 57d Disc stamped 0-786-1906 set flush with ground 452' N of & of Pabo Verdes Drive N 47d East of & of Marborne Ave Elev 355.510



SHEET	PAGE
1	1-5
2	6-10
3	11-15



Checked 2-13-57 W. Nelson

Revision: Sewer extended and deepened in Shorewood Road - Pages 9 & 10. Sewer added in Marborne Boulevard - Page 16. Approved: *[Signature]* 10-5-51 OFFICE OF COUNTY ENGINEER P. 9. C. E. N. P. 2842

LOMITA BLDG DIST. NO 7.1

NOTE: NO REPRESENTATIVE OF THE COUNTY ENGINEER WILL SURVEY OR LAY OUT ANY PORTION OF THE WORK. THE OWNER OR HIS AUTHORIZED REPRESENTATIVE SHALL FURNISH THE COUNTY ENGINEER WITH GRADE SHEETS AND STATIONS FOR ALL HOUSE LATERALS AND Y BRANCHES AND SHALL PROVIDE STAKES FOR THEM AT THEIR PROPER LOCATIONS WITH STATIONING PLAINLY MARKED. ANY CHANGE OF LOCATION SHALL BE REQUESTED IN WRITING BY THE OWNER OR HIS REPRESENTATIVE.

NO REVISIONS SHALL BE MADE IN THESE PLANS WITHOUT APPROVAL OF THE COUNTY ENGINEER.

1. USE STANDARD MANHOLE FRAMES AND COVERS, S-117.
2. USE STANDARD STRENGTH PIPE EXCEPT AS NOTED.
3. USE CEMENT MORTAR FOR ALL VITRIFIED CLAY PIPE JOINTS.
4. RESURFACE ALL TRENCH WITHIN PAVED AREA TO MEET L. A. COUNTY ROAD DEPT. REQUIREMENTS IN ACCORDANCE WITH PERMIT.
5. ENCASE FOUR FEET OF SEWER AT POINTS OF INTERFERENCE WITH POLES, S-119.
6. HOUSE LATERALS TO BE CONSTRUCTED WITH INVERT AT PROPERTY LINE 6 FEET BELOW CURB GRADE, EXCEPT AS NOTED.
7. ALL STRUCTURES SHALL BE BRICK SEWER STRUCTURES, S-104.
8. PROVIDE STAKES ON THE PROPERTY LINES OR PROPERTY LINES PRODUCED, AT RIGHT ANGLES TO THE SEWER LINE AT THE CENTER LINE OF EACH MANHOLE.
9. FOR ALLOWABLE LEAKAGE TEST USE FORMULA NO 1 SPEC. SEC. 51.
10. Manholes in unimproved Rights of Way to be constructed with top 6" above finished ground.
11. (a) No construction will be permitted in filled areas unless acceptable certification is submitted to the construction division of the County Engineer's Department that compaction is greater than 90%. (b) If compaction is less than 90%, the sewer must be elevated so that on Plan (c) the compaction is greater than 90%, grading is that required, however, joint compound must be substituted for cement mortar for all joints in filled areas.

12. The Private Engineer is to furnish the house lateral depth at the property line below the (top of curb or road) for each house lateral, on the Grade Sheet.

ENGINEERING SERVICE CORPORATION					
1127 W. WASHINGTON BLVD.					
LOS ANGELES 15, CALIF. R. 9-7281					
REVISIONS			TRACED BY _____		
			FACED BY _____		
			CK'D BY _____		
			SUBMITTED _____		
SUB STRUCTURES OK'D					
W. D. NO.	D.W. NO.	DATE	SCALE	L.S.	P.B.
6681-26		11-20-56	As Noted		

PROFILE, ALIGNMENT AND GRADE OF
SANITARY SEWERS
TO BE CONSTRUCTED IN
TRACT NO 21350

P.C. 3858
PAGE 1

PRIVATE CONTRACT NO. 3858
W. S. 27
SHEET 1 OF 3 SHEETS

(24,101)
(15)

SCALE VERT. 1"=8'
HOR. 1"=40'

PREPARED IN THE OFFICES OF
ENGINEERING SERVICE CORPORATION
BY *[Signature]*
REG. C. E. NO. 3692

REF. LEGEND
SEE PLAN NO. S-2-64

NOTE: GRADES TO WHICH THIS IMPROVEMENT IS TO BE CONSTRUCTED ARE SHOWN ON PLANS AND PROFILES. GRADE POINTS FOR TOP OF CURB, CENTER LINE OF STREETS, OR CENTER LINE OF ALLEY ARE SHOWN BY CIRCLES ON PROFILES. AT ALL POINTS BETWEEN DESIGNATED POINTS THE GRADE SHALL BE ESTABLISHED SO AS TO CONFORM TO A STRAIGHT LINE DRAWN BETWEEN SAID DESIGNATED POINTS.

ELEVATIONS ARE IN FEET ABOVE U.S.C. & G.S. MEAN SEA LEVEL DATUM OF 1929.

THIS DRAWING AND THE DATA HEREON ARE HEREBY MADE A PART OF THE SPECIFICATIONS.

WORK SHALL BE CONSTRUCTED ACCORDING TO SPECIFICATIONS ON FILE IN THE OFFICE OF THE COUNTY ENGINEER AND SHALL BE PROSECUTED ONLY IN THE PRESENCE OF THE COUNTY ENGINEER.

BEFORE WORK CAN BE STARTED THE CONTRACTOR MUST OBTAIN A PERMIT TO EXCAVATE IN COUNTY STREETS FROM THE L. A. COUNTY ROAD DEPT. 108 W. 2ND ST. AND MAKE A DEPOSIT WITH THE COUNTY ENGINEER \$350 BROADWAY, R.M. 310 SUFFICIENT TO COVER THE COST OF CONSTRUCTION INSPECTION AND RECORD PLANS.

APPROVAL OF THIS PLAN BY THE COUNTY OF LOS ANGELES DOES NOT CONSTITUTE A REPRESENTATION AS TO THE ACCURACY OF THE LOCATION OF, OR THE EXISTENCE OR NON-EXISTENCE OF, ANY UNDERGROUND UTILITY, PIPE, OR STRUCTURE WITHIN THE LIMITS OF THIS PROJECT.

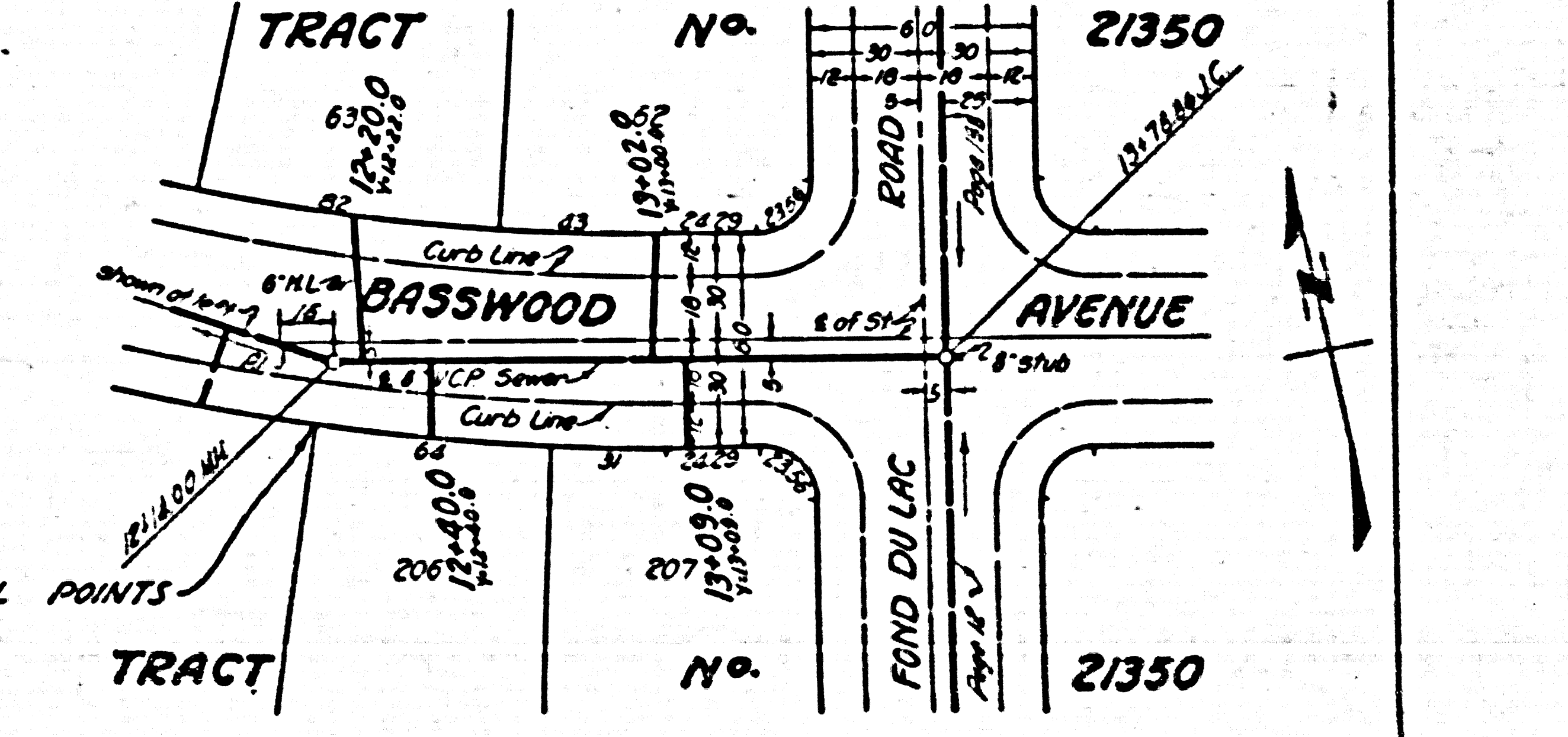
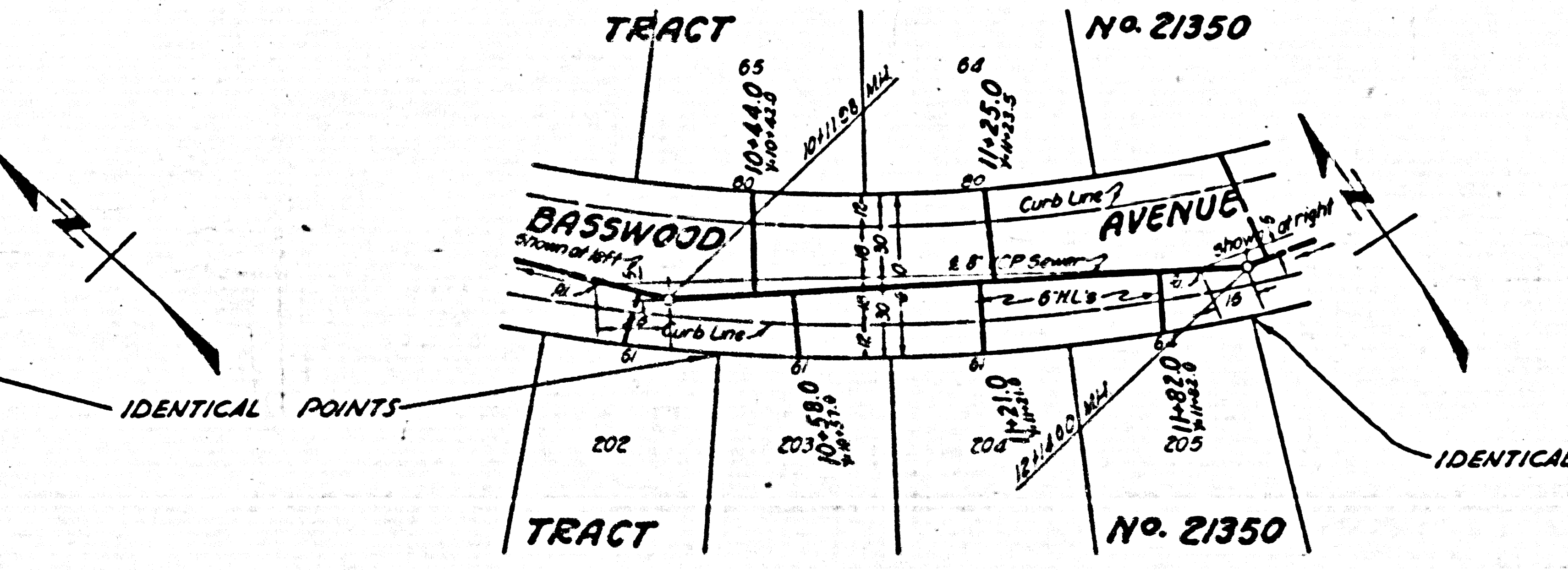
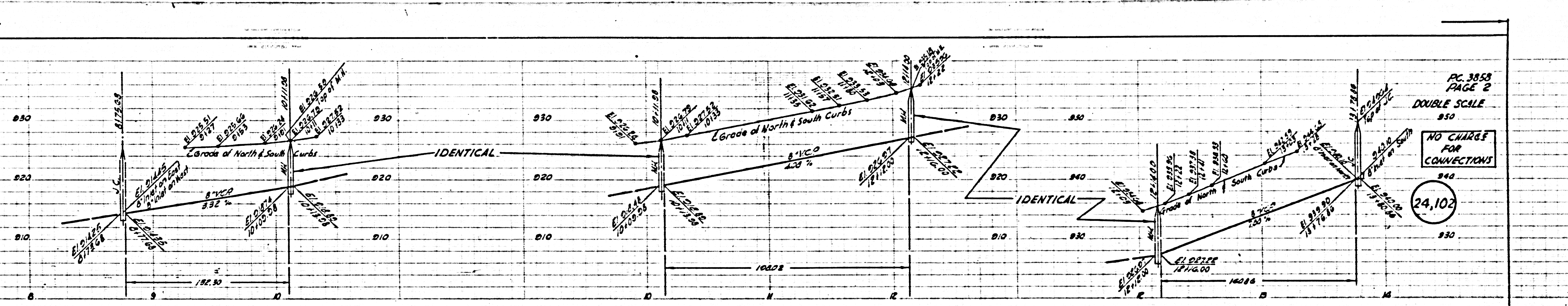
COUNTY OF LOS ANGELES, CALIFORNIA

APPROVED *[Signature]* CHIEF ENGINEER OF COUNTY SANITATION DISTRICT NO. 5

APPROVED *[Signature]* BY *[Signature]* COUNTY ENGINEER

CHECKED BY *[Signature]* OFFICE OF COUNTY ENGINEER REG. C. E. NO. 7664

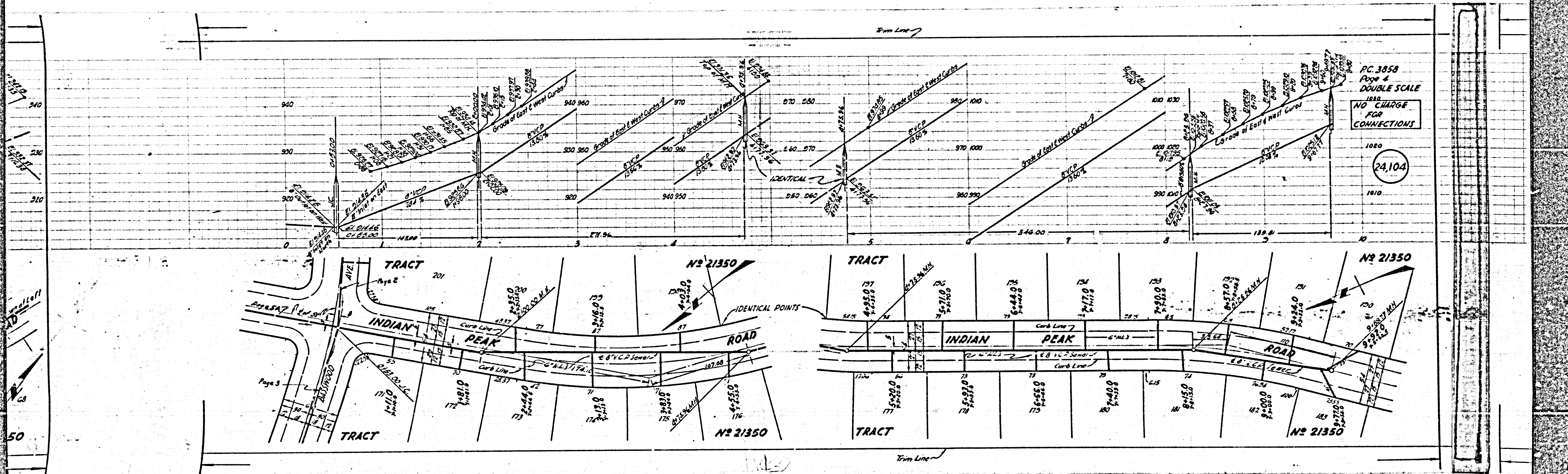
TRACT NO. 21350



IDENTICAL POINTS

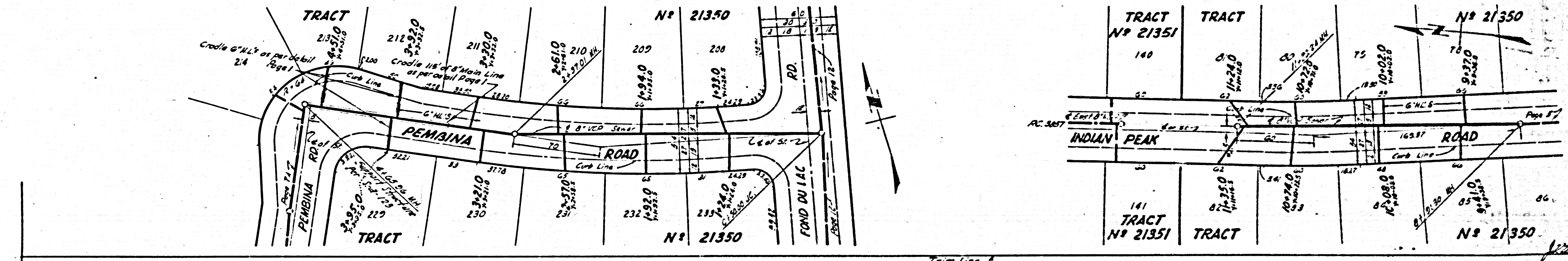
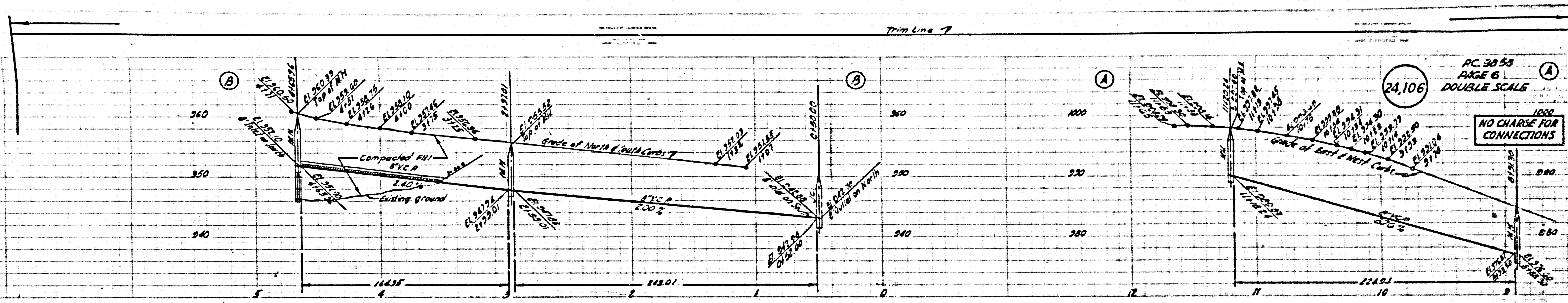
IDENTICAL POINTS

240



PC 3858
 Page 2
 DOUBLE SCALE
 NO CHARGE
 FOR
 CONNECTIONS

24,104



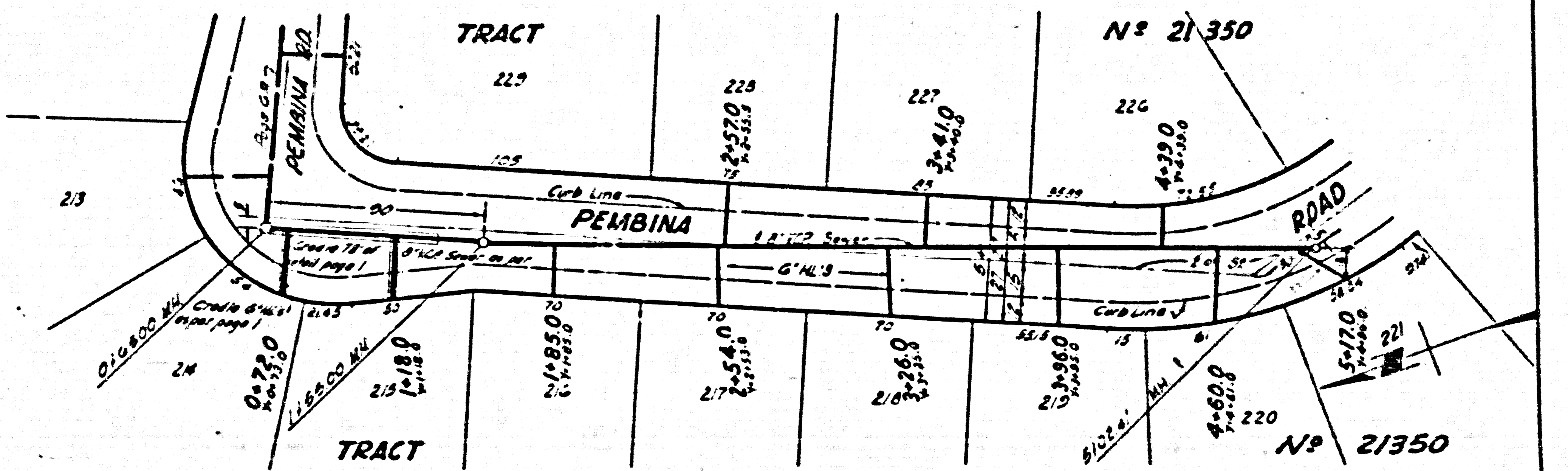
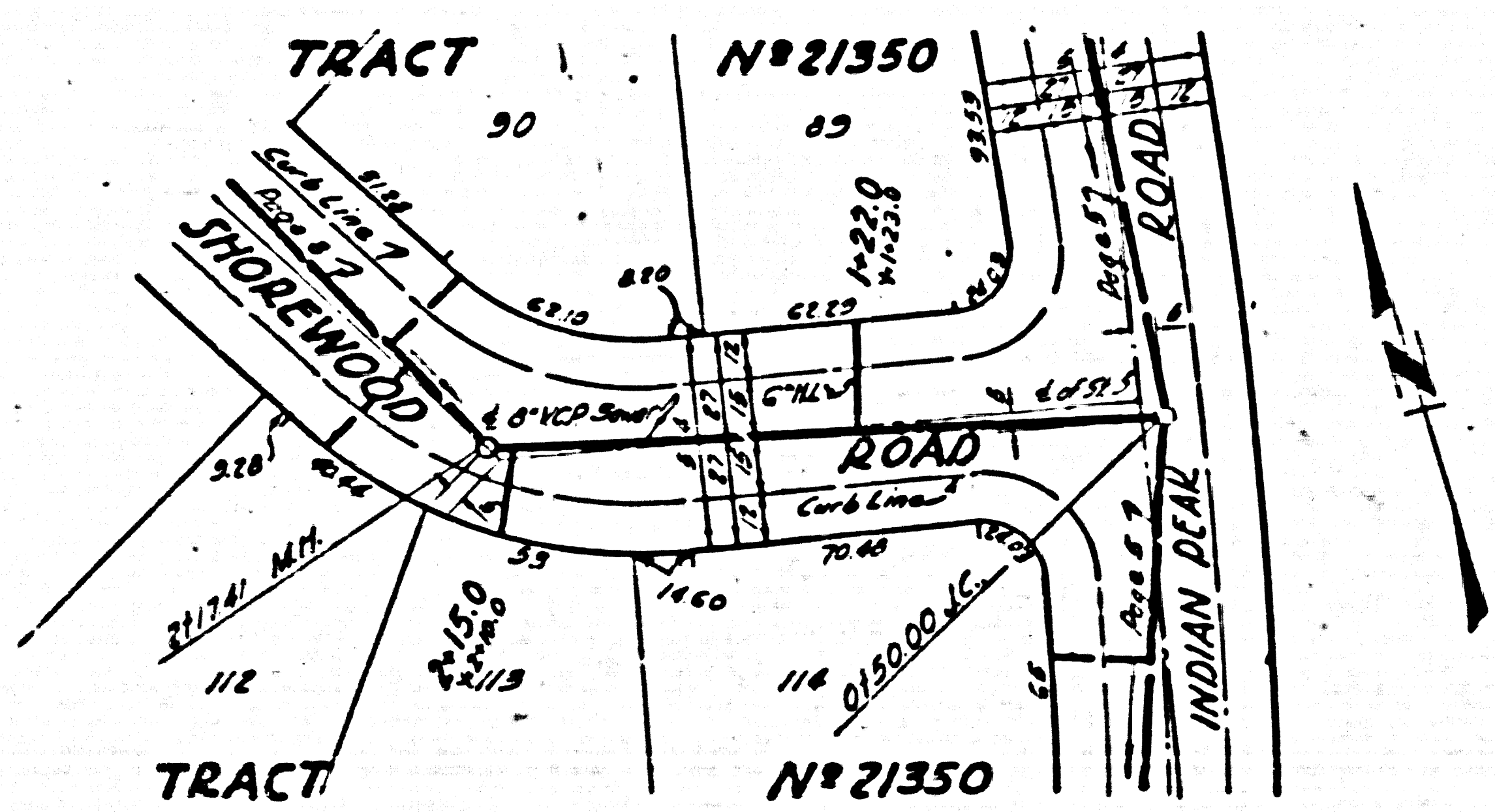
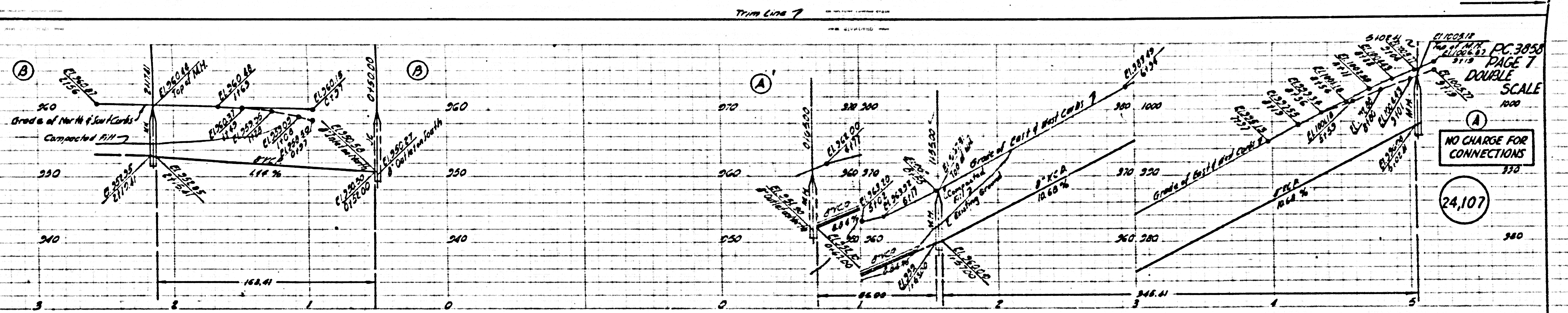
RC. 30 53
PAGE 6
DOUBLE SCALE

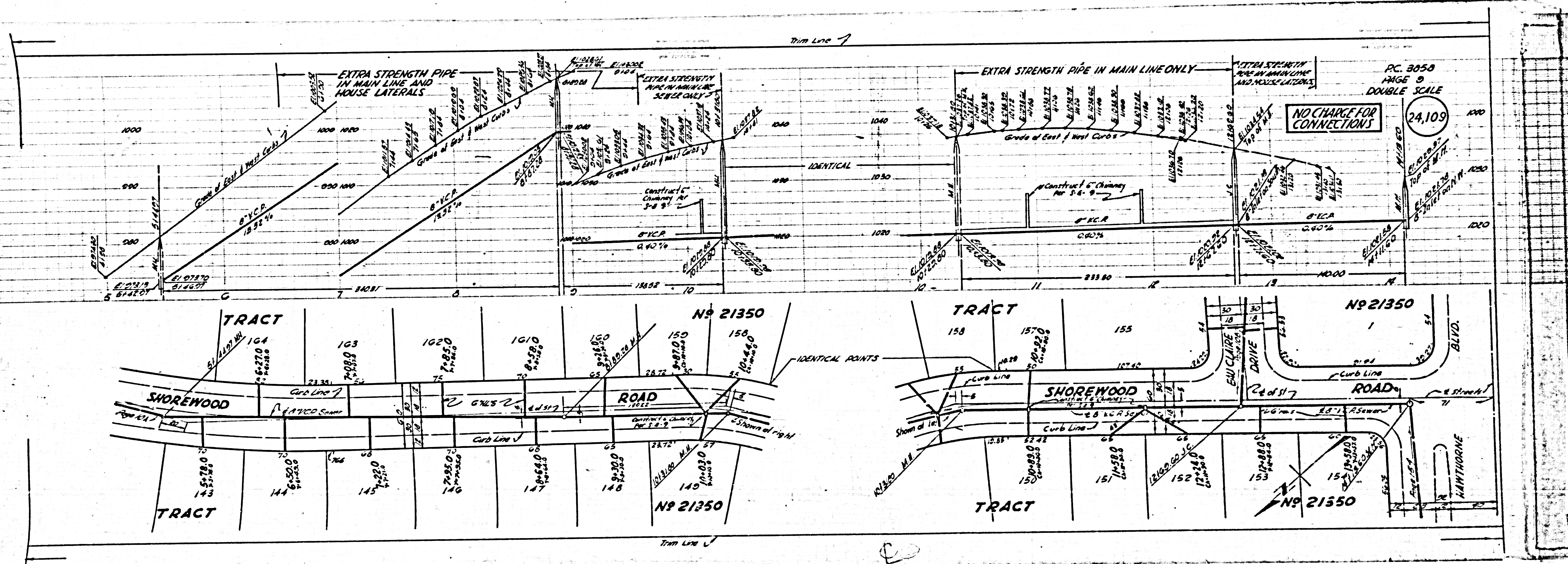
NO CHARGE FOR CONNECTIONS

TRACT NO S1320

TRACT NO S1320

(15)

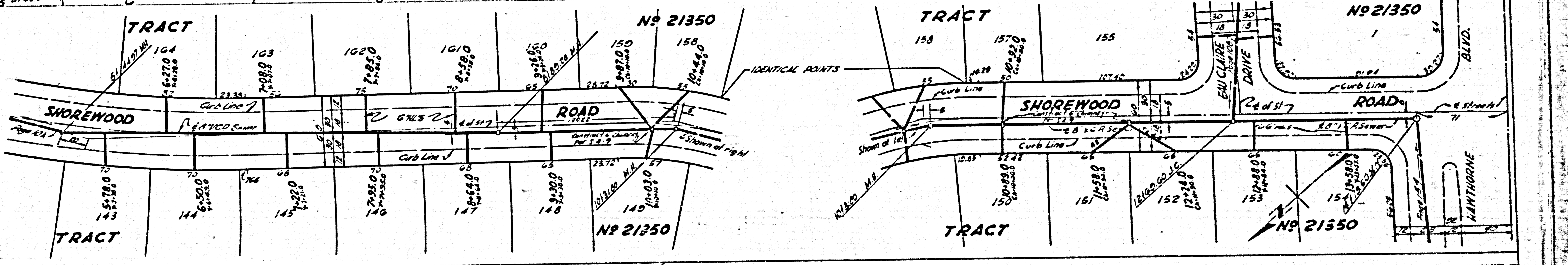


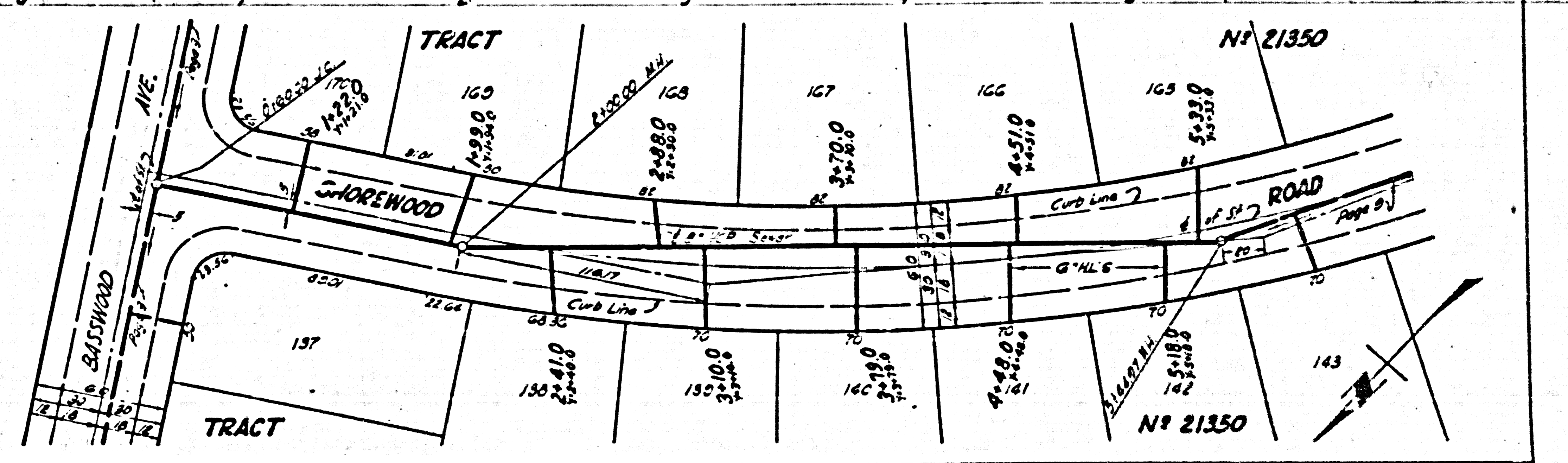
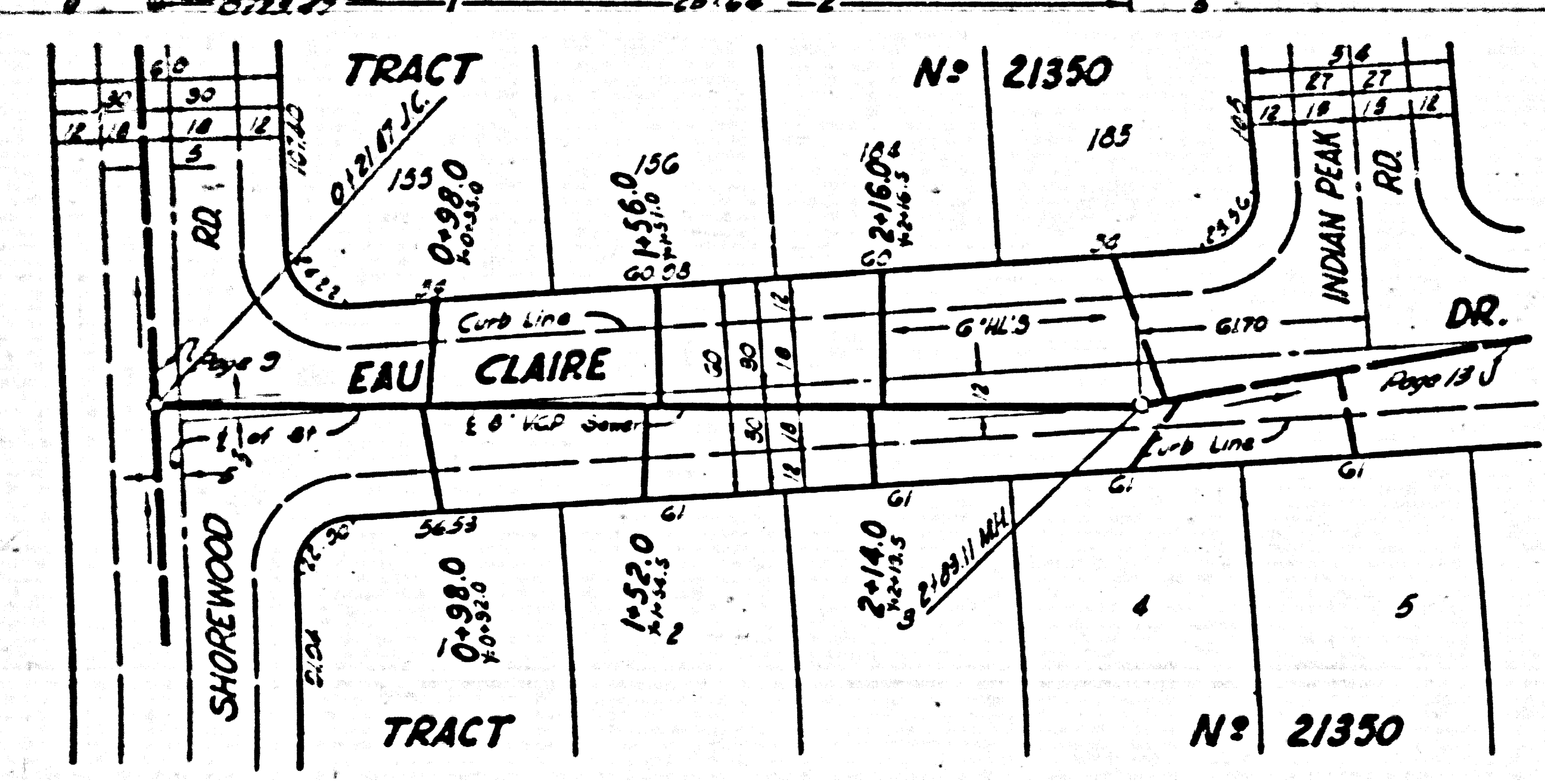
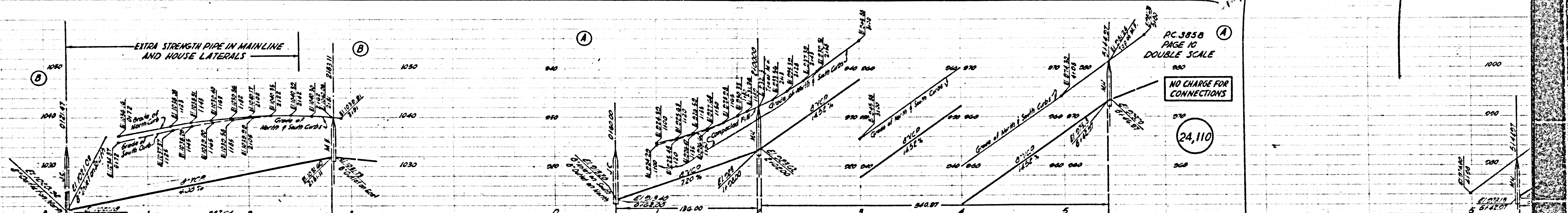


NO CHARGE FOR CONNECTIONS

PC. 3050
PAGE 9
DOUBLE SCALE

24,109





3858
GE 12
E SCALE

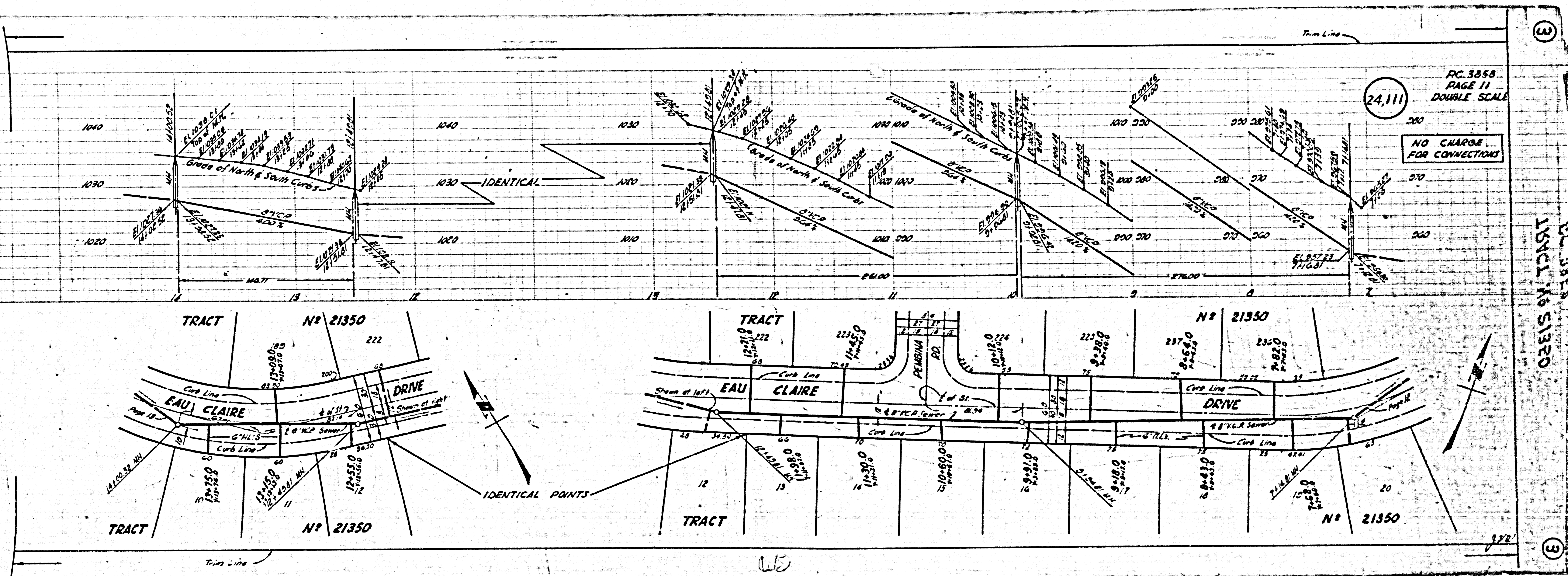
LARGE
SECTIONS

PG. 3858
PAGE 11
DOUBLE SCALE

24,111

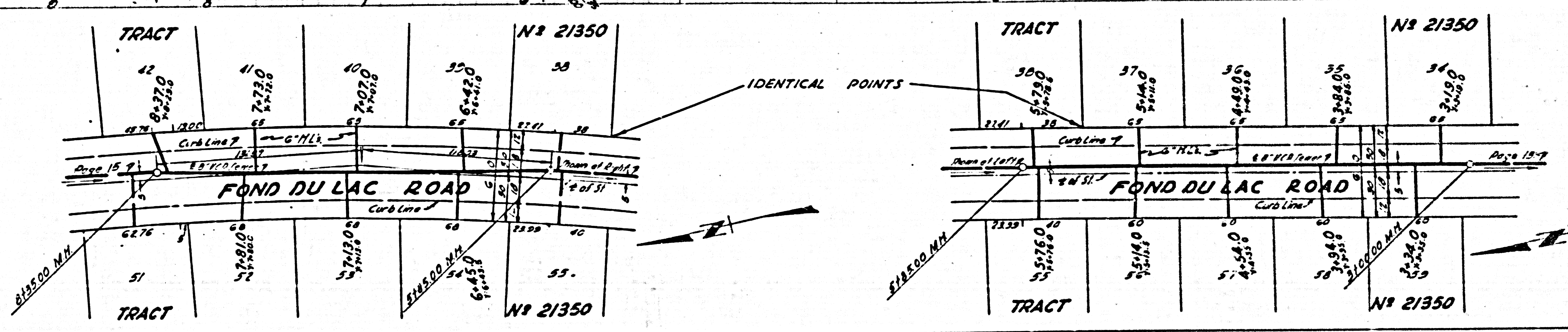
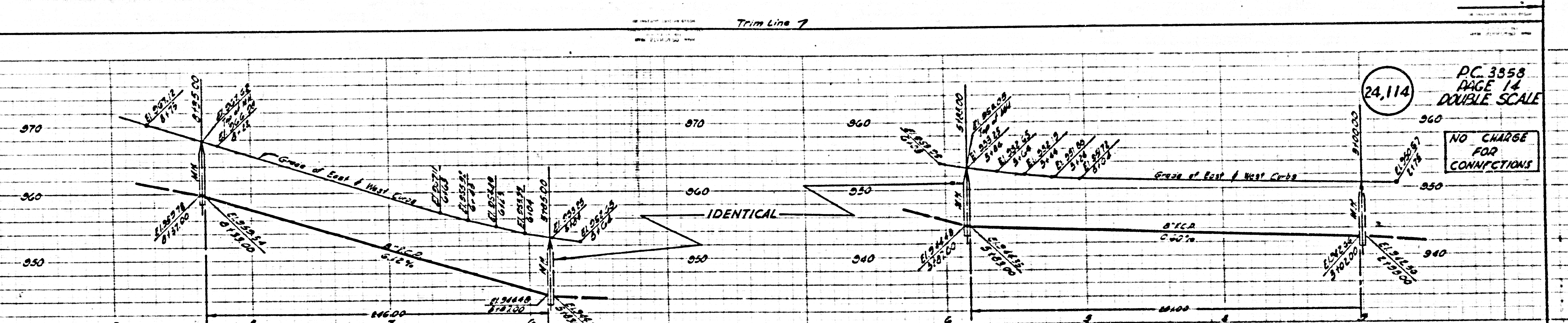
NO CHARGE
FOR CONNECTIONS

TRACT NO 5130

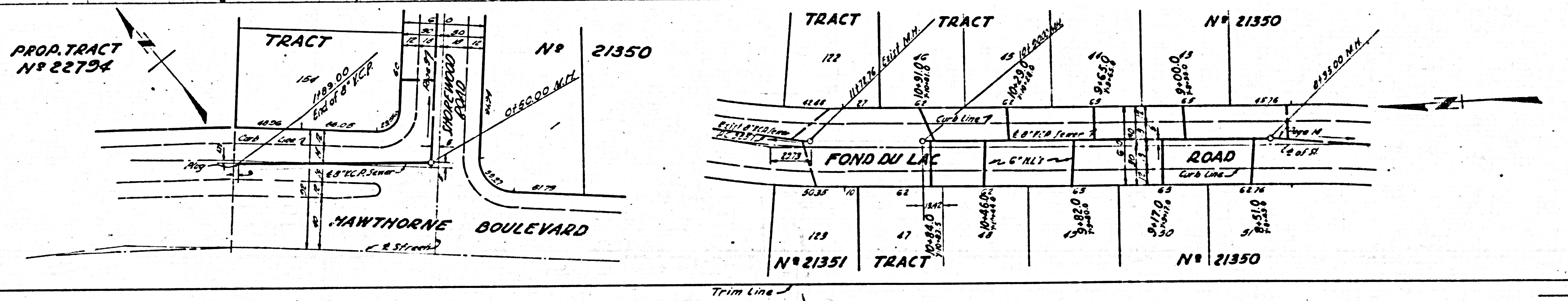
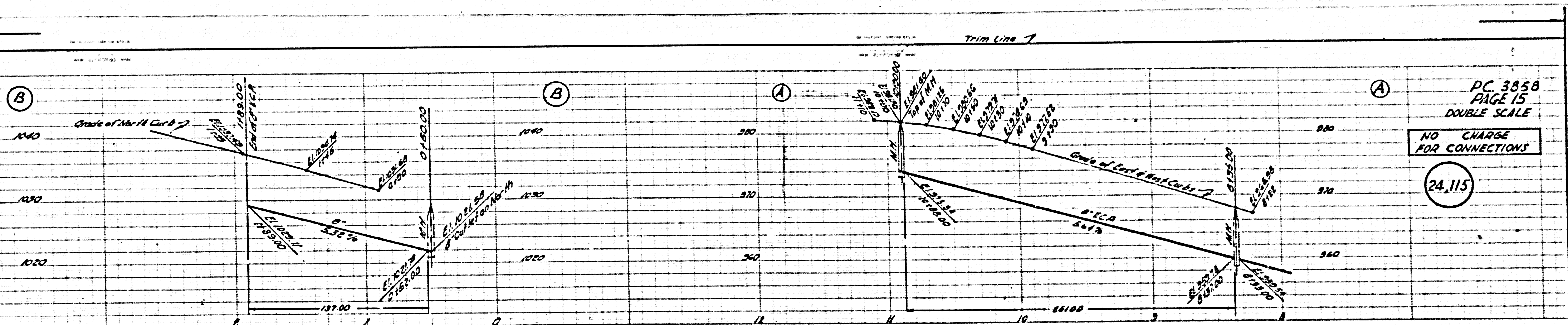


312

45



PC. 3358
PAGE 14
DOUBLE SCALE
24,114
NO CHARGE
FOR
CONNECTIONS



PC 3858
PAGE 15
DOUBLE SCALE
NO CHARGE
FOR CONNECTIONS
24.115