

PUEENTE BLDG. DIST. NO. 2

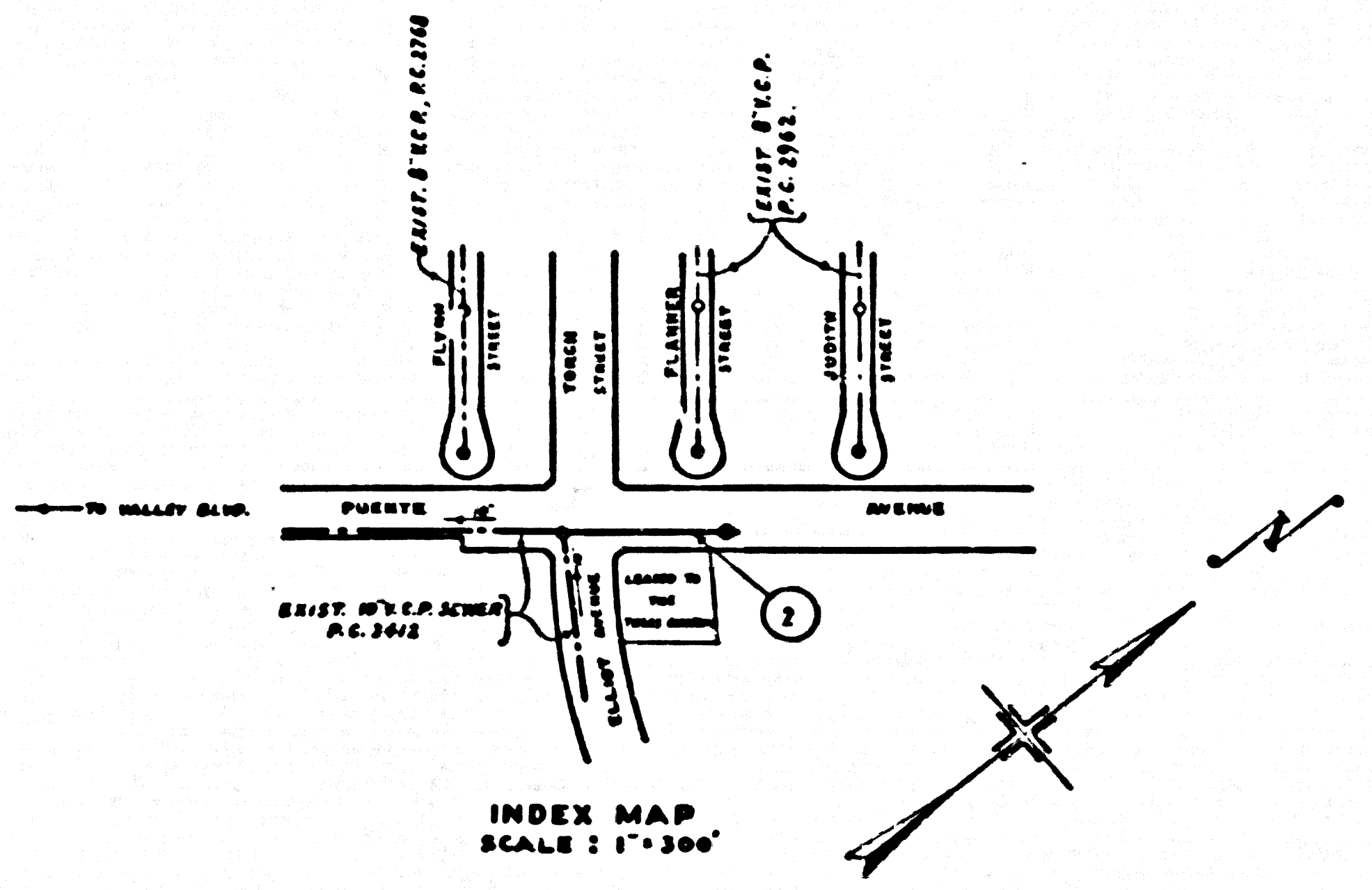
PROFILE ALIGNMENT AND GRADE OF P.C. 3859
SANITARY SEWERS PAGE 1
TO BE CONSTRUCTED IN

PUEENTE AVENUE
PRIVATE CONTRACT NO. 3859
W.S. 46

1 SHEETS, 2 PAGES
SCALE: 1" = 4' HORIZ. 1" = 4' VERT. 1956
PREPARED IN THE OFFICES OF
HAROLD M. TEGART

FOR LEGEND SEE PLAN NO. S-A-64

- NOTES
- PROVIDE STAKES ON THE PROPERTY LINE OR PROPERTY LINES PRODUCED AT RIGHT ANGLES TO THE SEWER LINE AT THE CENTER LINE OF EACH MANHOLE.
 - NO REPRESENTATIVE OF THE COUNTY ENGINEER WILL SURVEY OR LAY OUT ANY PORTION OF THE WORK.
 - THE OWNER OR HIS AUTHORIZED REPRESENTATIVE SHALL FURNISH THE COUNTY ENGINEER WITH GRADE SHEETS AND STATION FOR ALL HOUSE LATERALS AND Y BRANCHES AND SHALL PROVIDE STAKES FOR THEM AT THEIR PROPER LOCATIONS WITH STATIONING PLANS. MAJOR ANY CHANGE IN LOCATION SHALL BE REQUESTED BY WRITING BY THE OWNER OR HIS REPRESENTATIVE.
 - NO REVISIONS SHALL BE MADE IN THESE PLANS WITHOUT THE APPROVAL OF THE COUNTY ENGINEER.
 - USE STANDARD MANHOLE FRAMES AND COVERS, S-A-117, EXCEPT AS NOTED.
 - USE STANDARD STRENGTH PIPE EXCEPT AS NOTED.
 - USE CEMENT MORTAR FOR ALL VITRIFIED CLAY PIPE JOINTS.
 - RESURFACE ALL TRENCH WITHIN PAVED AREA TO MEET L. A. COUNTY ROAD DEPT. OR CALIF. STATE HIGHWAY DEPT. REQUIREMENTS IN ACCORDANCE WITH PERMITS.
 - ENCASE FOUR FEET OF SEWER AT POINTS OF INTERFERENCE WITH POLES, S-A-119.
 - HOUSE LATERALS TO BE CONSTRUCTED WITH INVERTS AT PROPERTY LINE 6 FEET BELOW GRADE OF STREET.
 - ALL STRUCTURES SHALL BE BRICK SEWER STRUCTURES, S-A-104, EXCEPT AS NOTED.
 - FOR ALLOWABLE LEAKAGE TEST USE FORMULA NO. 1 UNCC, SEC. II
 - MANHOLE TOPS IN UNAPPROVED RIGHTS-OF-WAY TO BE 4" ABOVE FINISHED GRADE.



NO CHARGE FOR CONNECTIONS
7/21/56

BENCH MARK S.B. 1025
Lead and Brass Nail in E.E. corner
of Concrete Base of Pump Motor 65' S
South of E of Torch St. and 85' West
of E of Puente Ave. E1-316.130

APPROVED BY INDUSTRIAL WASTE DIVISION
Arthur Pickett 2/7/56

Checked 9-21-56 W. Wilson

NOTE:
GRADES TO WHICH THIS IMPROVEMENT IS TO BE CONSTRUCTED ARE SHOWN ON PLANS AND PROFILES. GRADE POINTS FOR TOP OF CURB, CENTER LINE OF STREET, OR CENTER LINE OF ALLEY ARE SHOWN BY CIRCLES ON PROFILES AT ALL POINTS BETWEEN DESIGNATED POINTS THE GRADE SHALL BE ESTABLISHED SO AS TO CONFORM TO A STRAIGHT LINE DRAWN BETWEEN SAID DESIGNATED POINTS.
ELEVATIONS ARE IN FEET ABOVE U.S.C. AND G.S. MEAN LEVEL DATUM OF 1929.
THIS DRAWING AND THE DATA HEREON ARE HEREBY MADE A PART OF THE SPECIFICATIONS.
WORK SHALL BE CONSTRUCTED ACCORDING TO SPECIFICATIONS ON FILE IN THE OFFICE OF THE COUNTY ENGINEER AND SHALL BE PROSECUTED ONLY IN THE PRESENCE OF THE COUNTY ENGINEER.
BEFORE WORK CAN BE STARTED, THE CONTRACTOR MUST OBTAIN A PERMIT TO EXCAVATE IN COUNTY STREETS FROM THE L. A. COUNTY ROAD DEPT., FOR WHICH HE SHALL MAKE A DEPOSIT WITH THE COUNTY ENGINEER, ROOM 324 PAN AMERICAN BUILDING, 222 SO. BROADWAY, SUFFICIENT TO COVER THE COST OF CONSTRUCTION INSPECTION AND RECORD PLANS.
APPROVAL OF THIS PLAN BY THE COUNTY OF LOS ANGELES DOES NOT CONSTITUTE A REPRESENTATION AS TO THE ACCURACY OF THE LOCATION OF OR THE EXISTENCE OR NON-EXISTENCE OF ANY UNDERGROUND UTILITY PIPE, OR STRUCTURE WITHIN THE LIMITS OF THIS PROJECT. THIS NOTE APPLIES TO ALL PAGES.
IF WORK IS TO BE DONE IN A STATE HIGHWAY, A PERMIT MUST BE OBTAINED FROM THE STATE OF CALIFORNIA, DIVISION OF HIGHWAYS, 120 SOUTH SPRING STREET.

COUNTY OF LOS ANGELES, CALIFORNIA

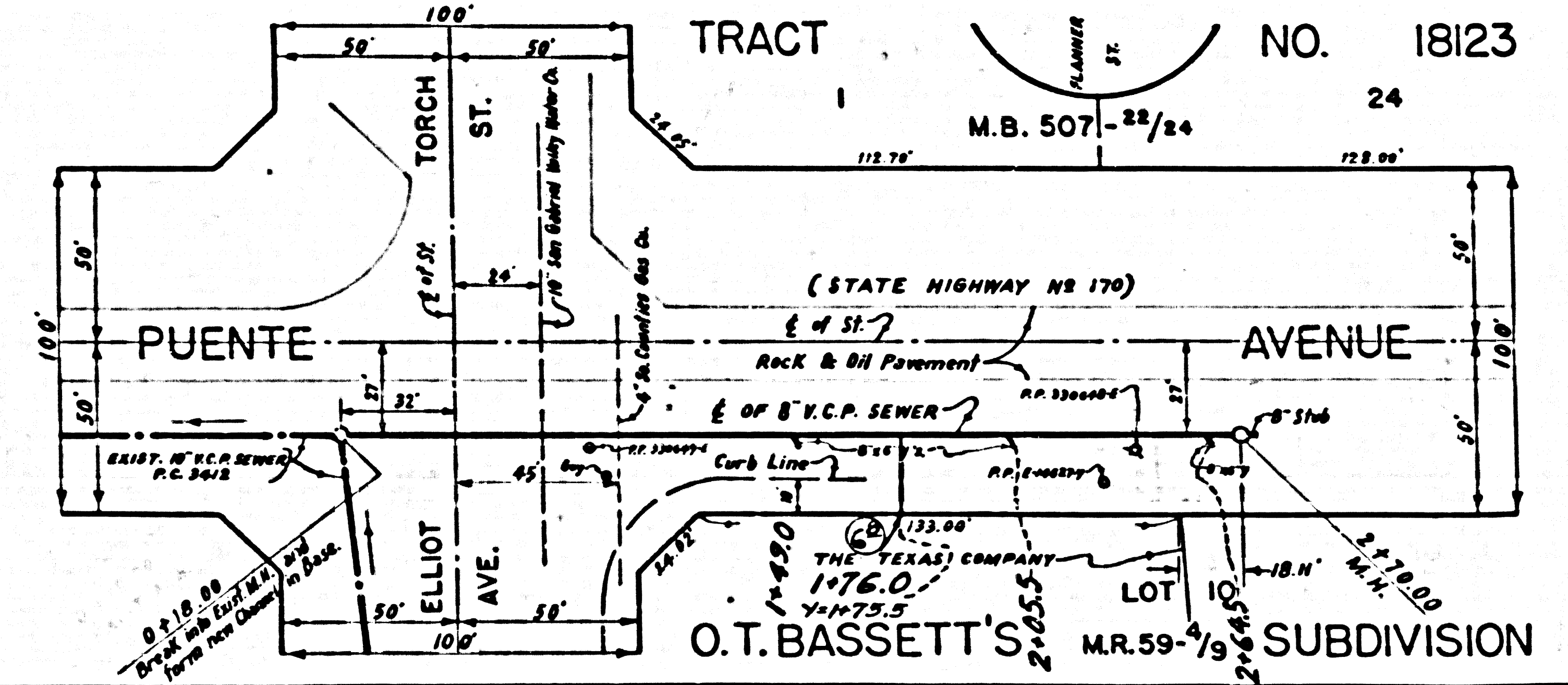
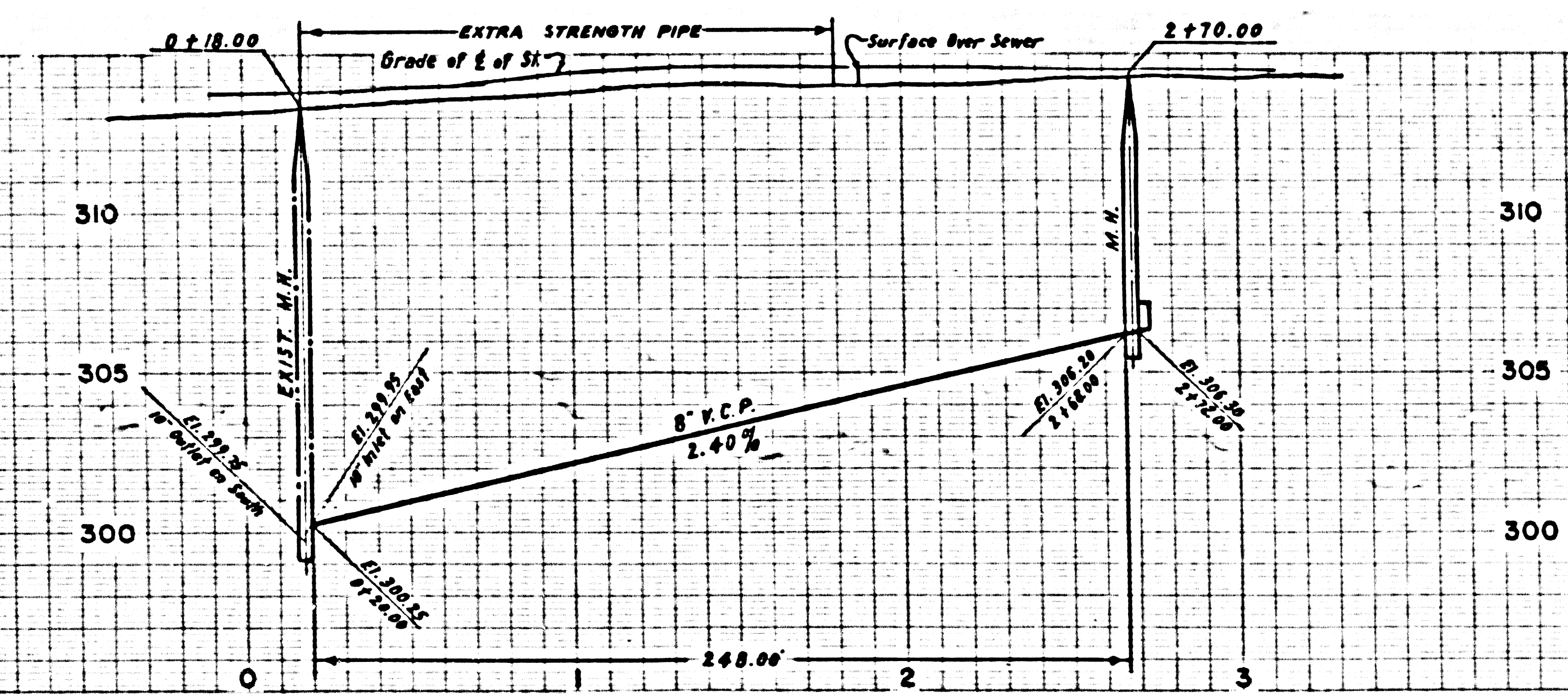
APPROVED, JOHN A. LAMBE, COUNTY ENGINEER
APPROVED, A. M. BAWN, CHIEF ENGINEER
CO. SAN DIST. NO. 19

BY A. P. Collins SANITATION ENGINEER
BY A. M. Bawn CHIEF ENGINEER

CHECKED BY P. K. Kahan 3-21-56
OFFICE OF COUNTY ENGINEER, 800 C. E. NO. 7860

P.C. 3859 PAGE 2

NO CHARGE FOR CONNECTIONS
23,475



RL