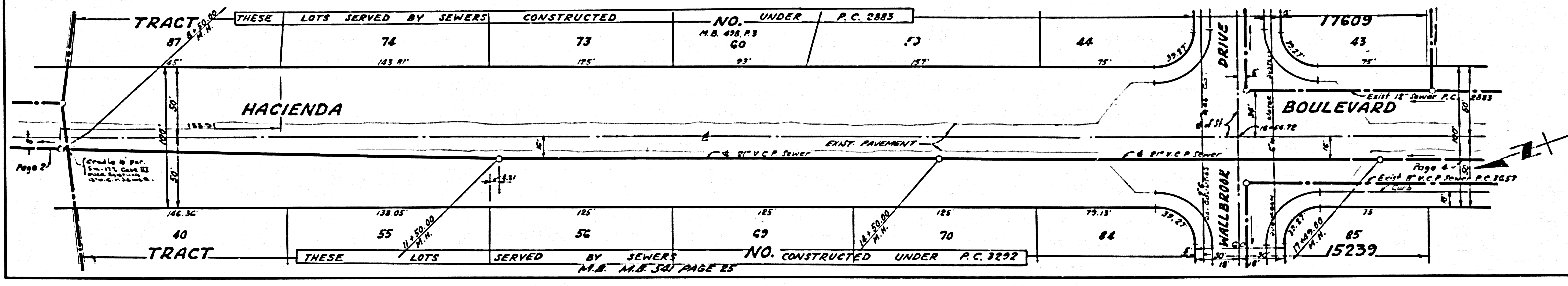
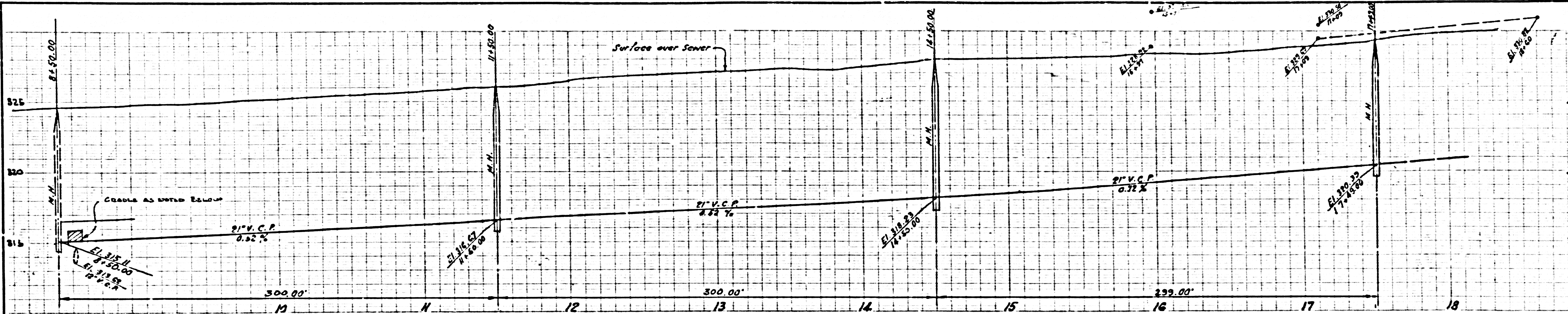


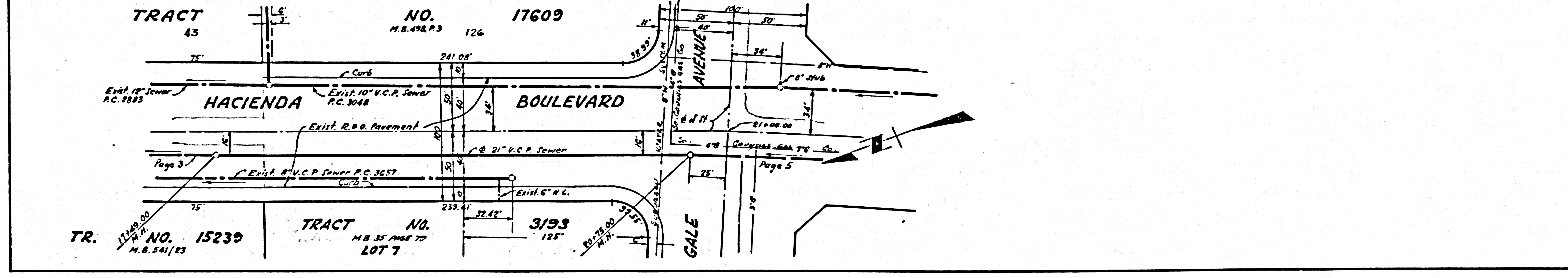
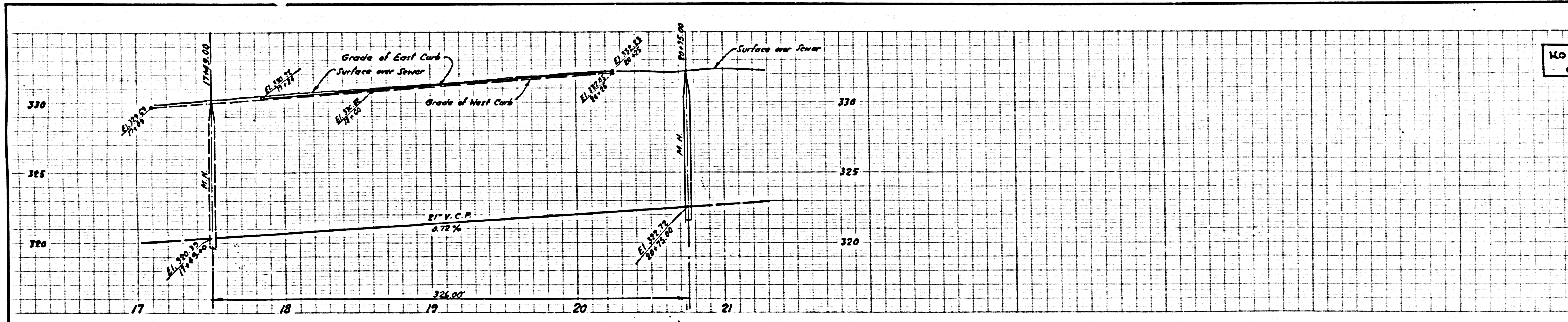
NO CHARGE FOR CONNECTIONS

25,214



NO CHARGE FOR CONNECTIONS

25,215



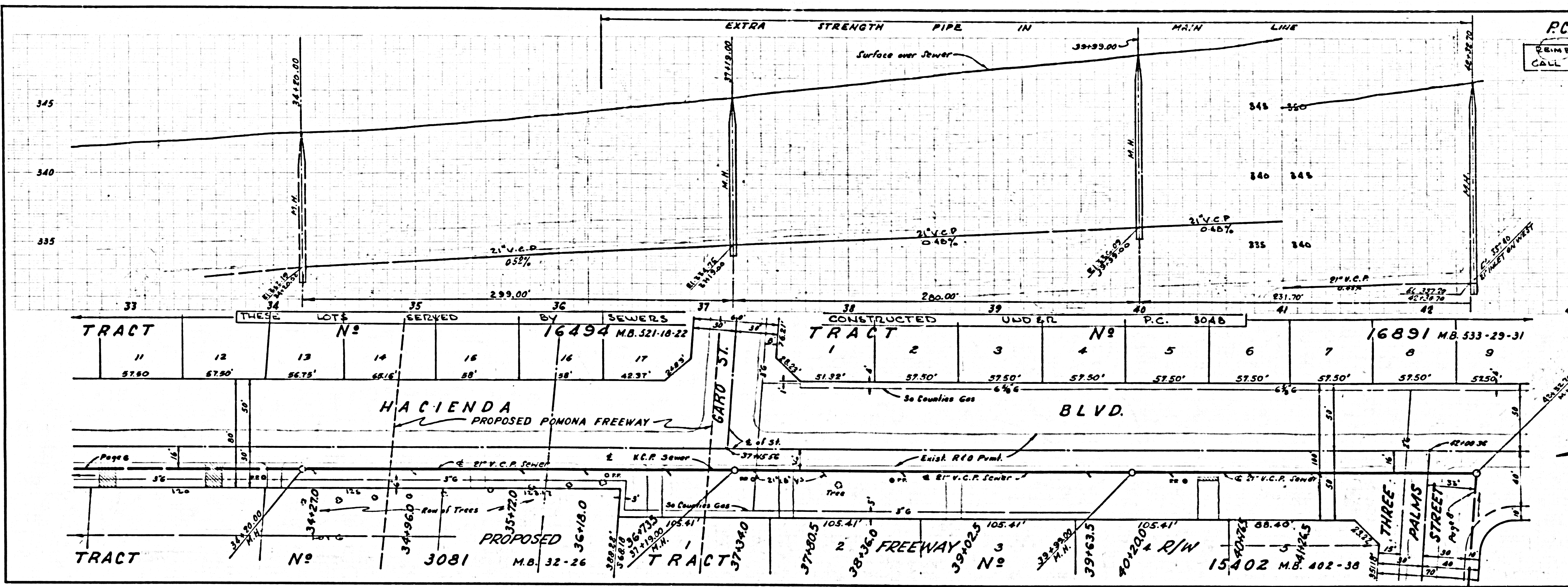
2

P.C. 3862

TRACT NO. 15239

REIMBURSEMENT CHARGES CALL MAIN OFFICE.

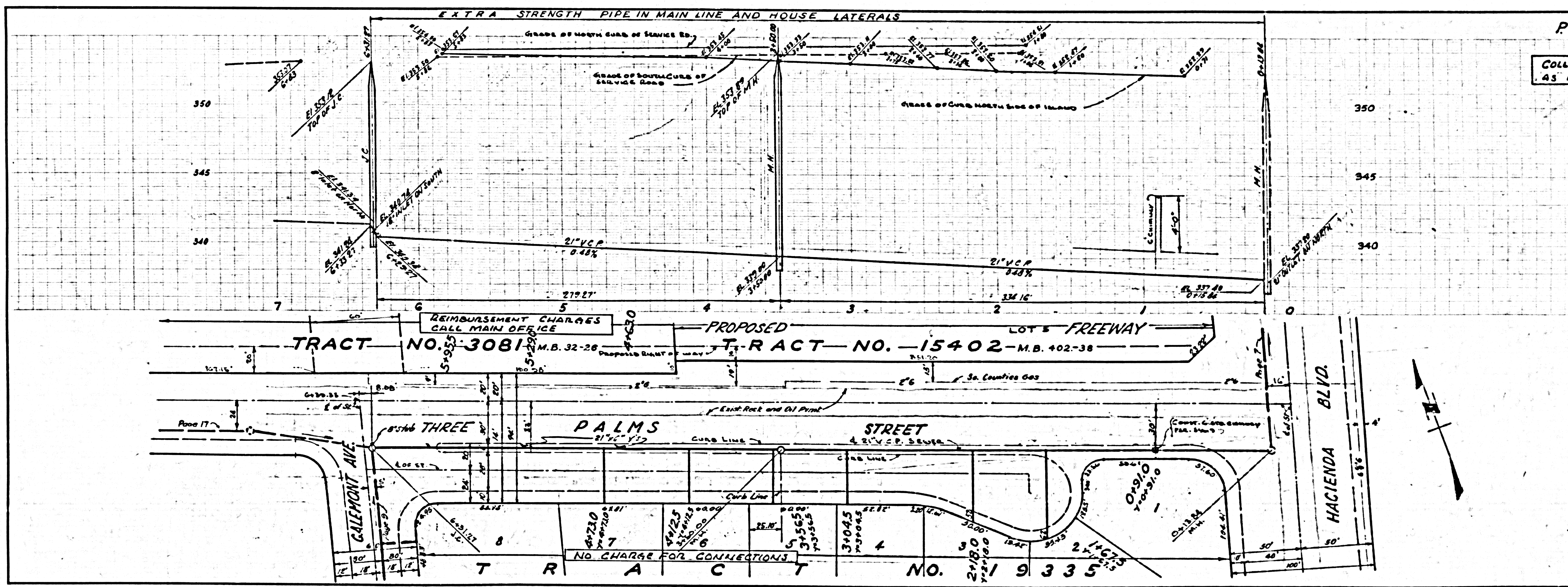
25,218



TRACT	11	12	13	14	15	16	17	18	19	20	21	22	23	24	25	26	27	28	29	30	31	32	33
WIDTH	57.80'	57.50'	56.75'	56.16'	55'	42.37'	22.3'	51.32'	57.50'	57.50'	57.50'	57.50'	57.50'	57.50'	57.50'	57.50'	57.50'	57.50'	57.50'	57.50'	57.50'	57.50'	57.50'

COLLECT CHARGES AS INDICATED

25,219



TRACT NO. 3081 M.B. 32-26

TRACT NO. 15402 M.B. 402-38

TRACT NO. 19335

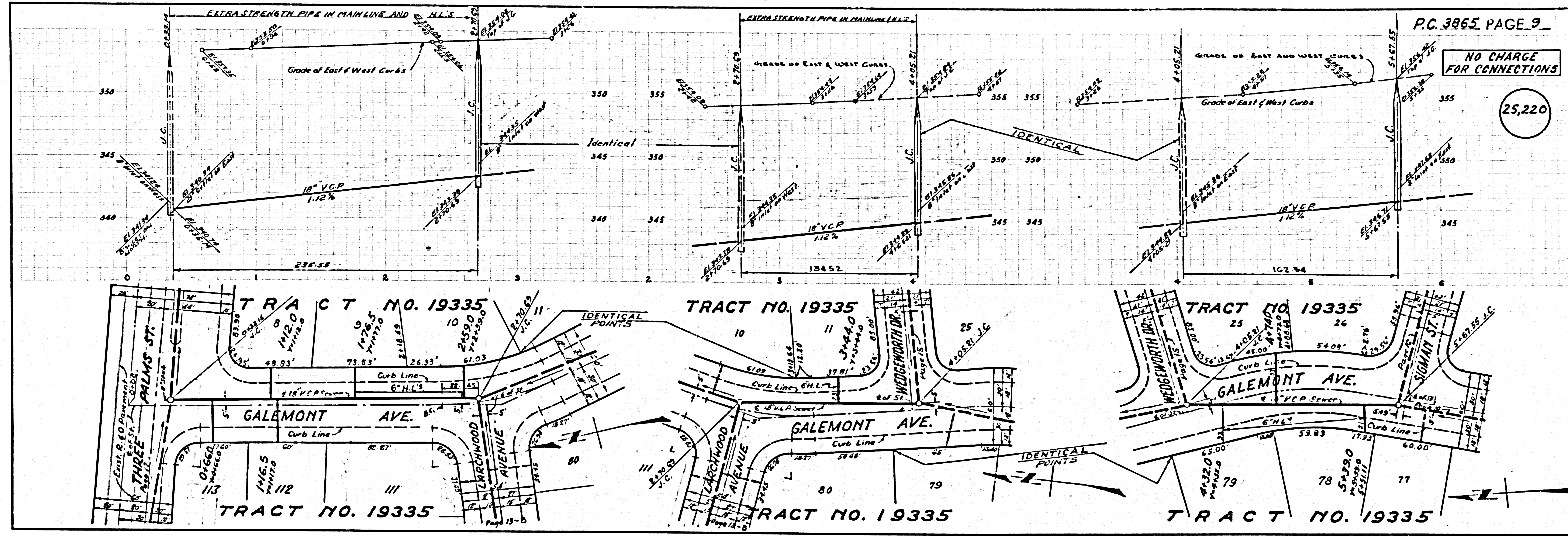
PC 3862

PC 3862

PC 3862

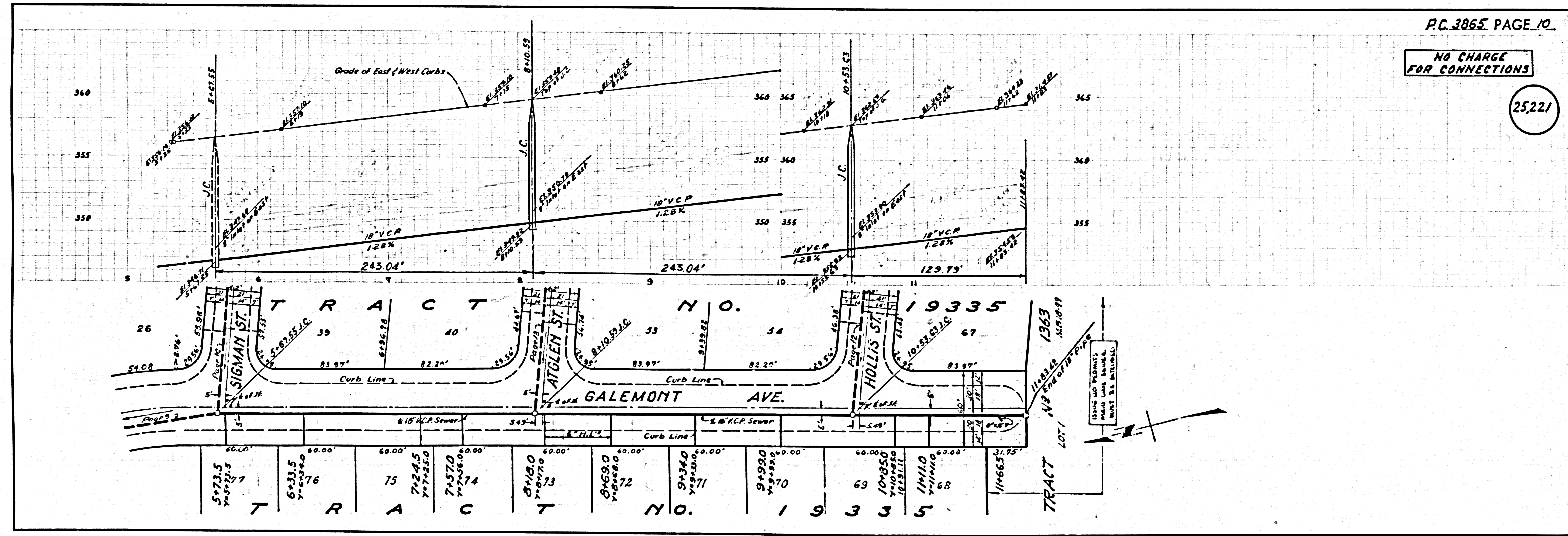
NO CHARGE FOR CONNECTIONS

25,220



NO CHARGE FOR CONNECTIONS

25,221



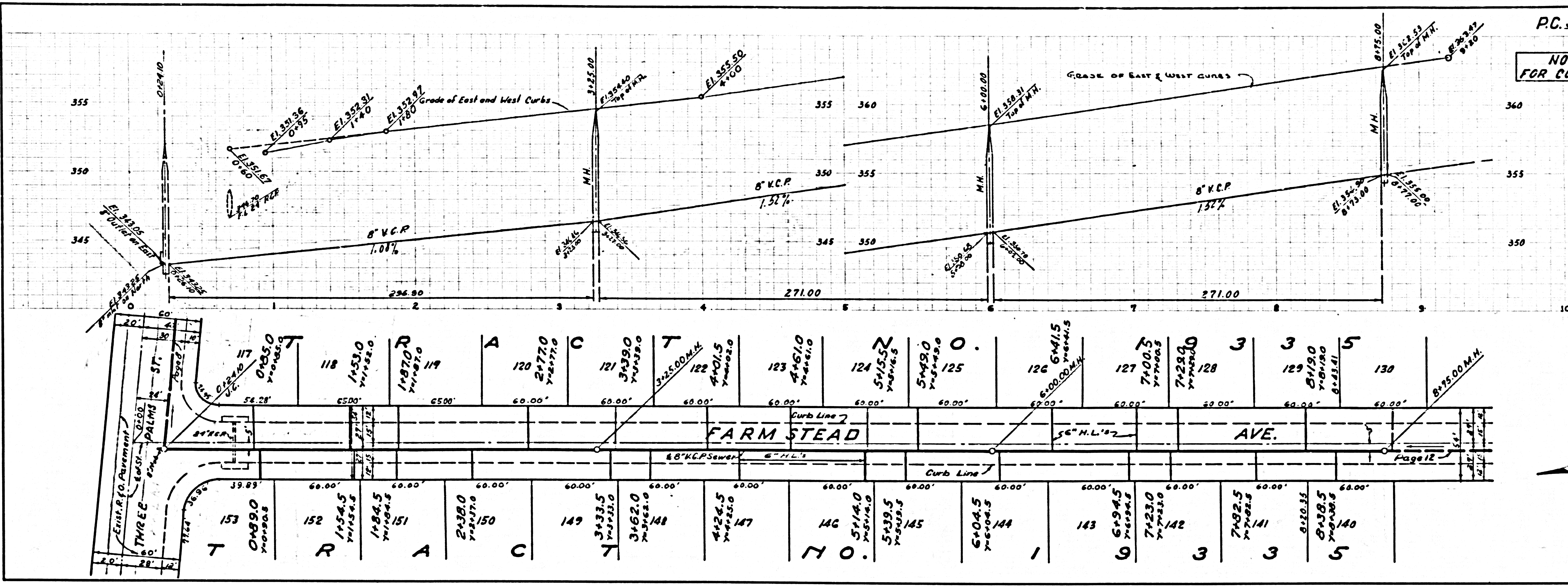
5

P.C. 3862

TRACT NO. 19332

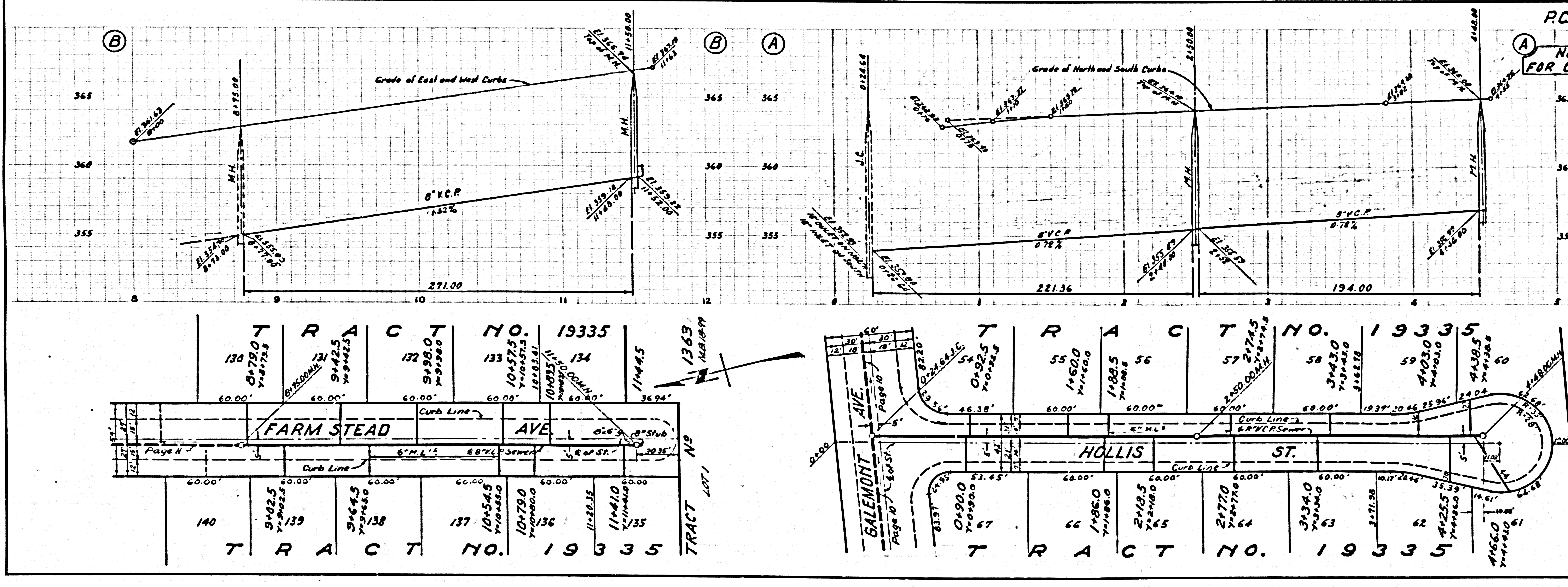
NO CHARGE FOR CONNECTIONS

25,222



NO CHARGE FOR CONNECTIONS

25,223



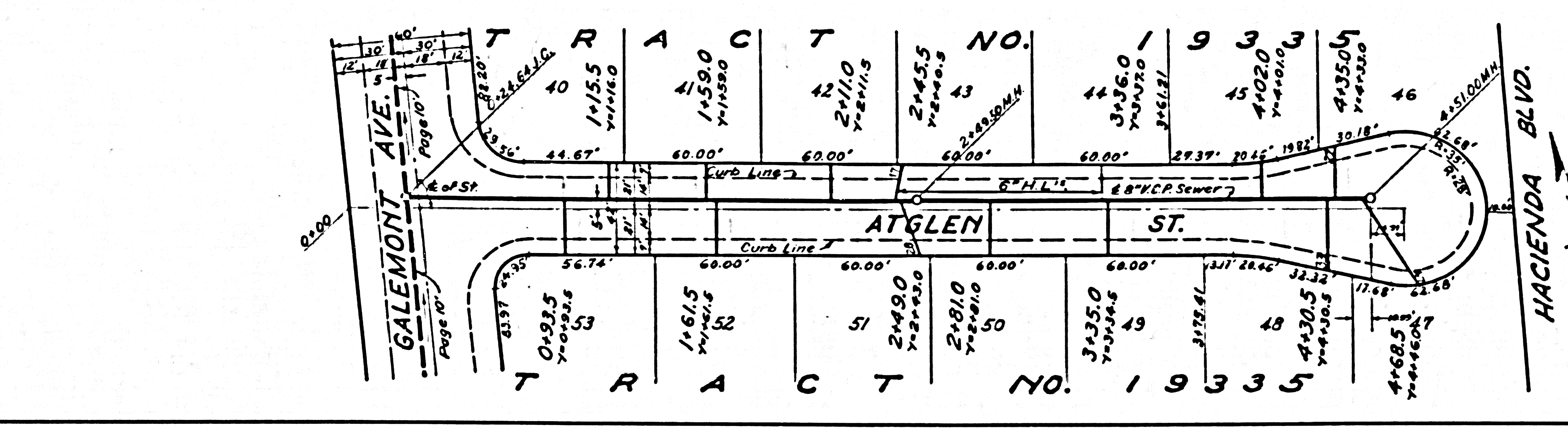
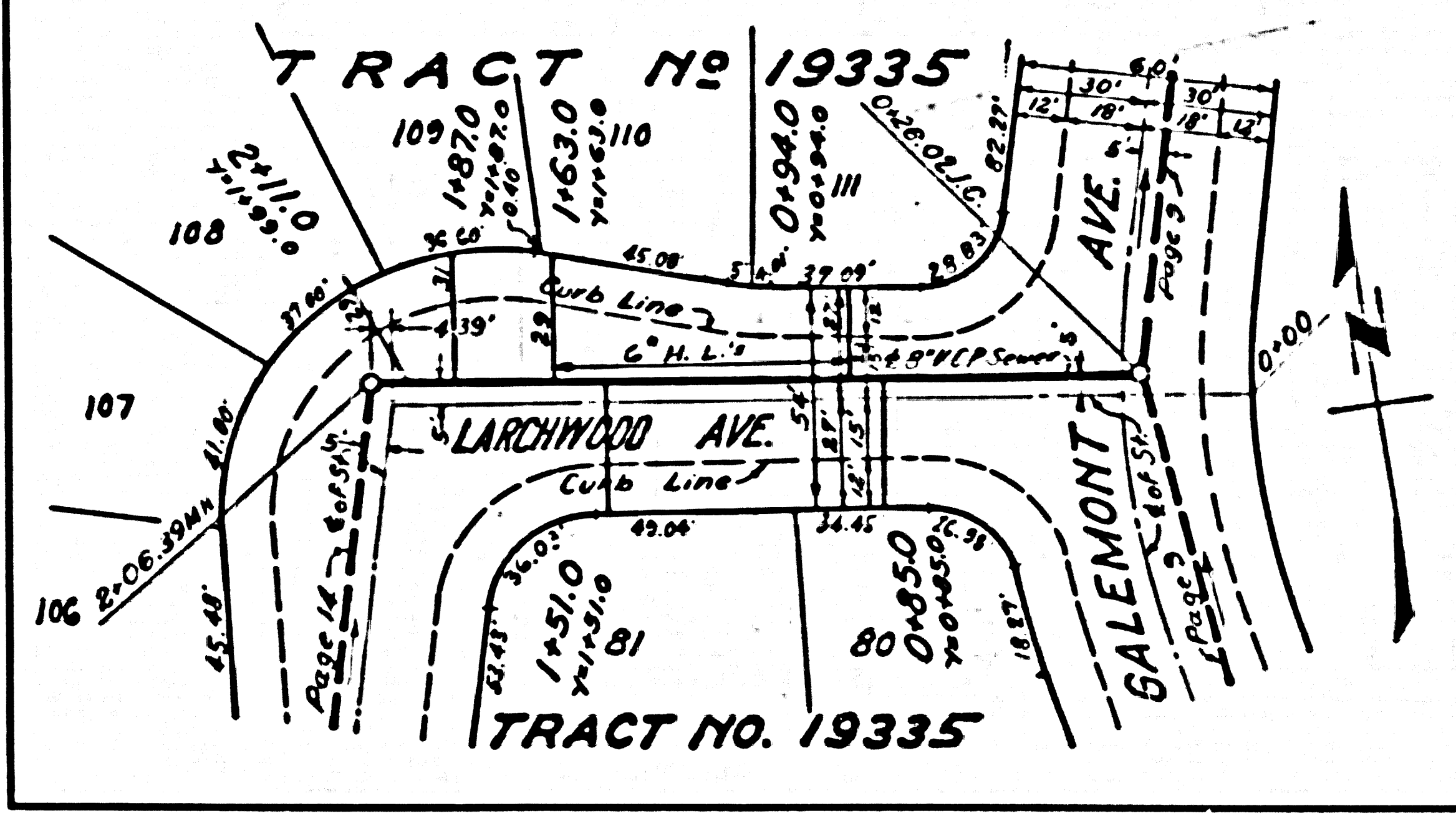
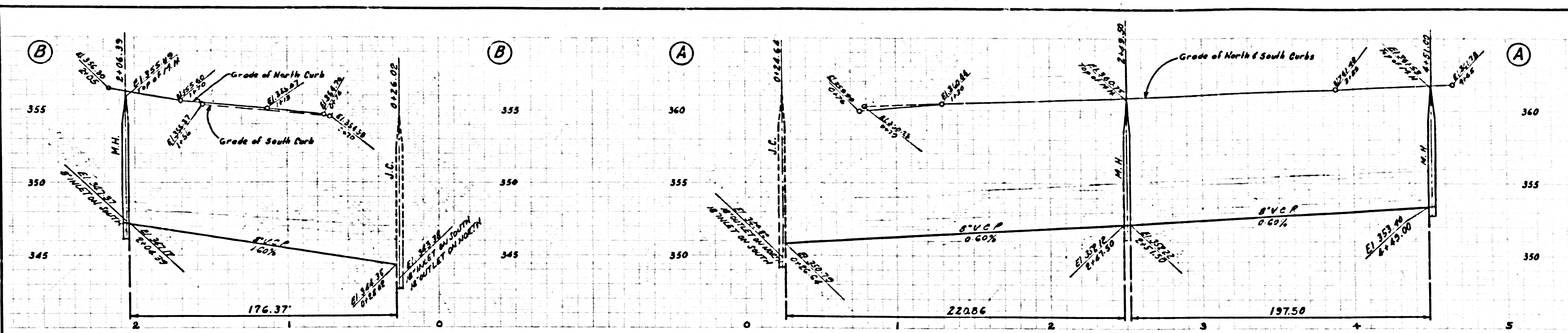
6

PC 3865

TRACT NO 19335

NO CHARGE FOR CONNECTIONS

25,224

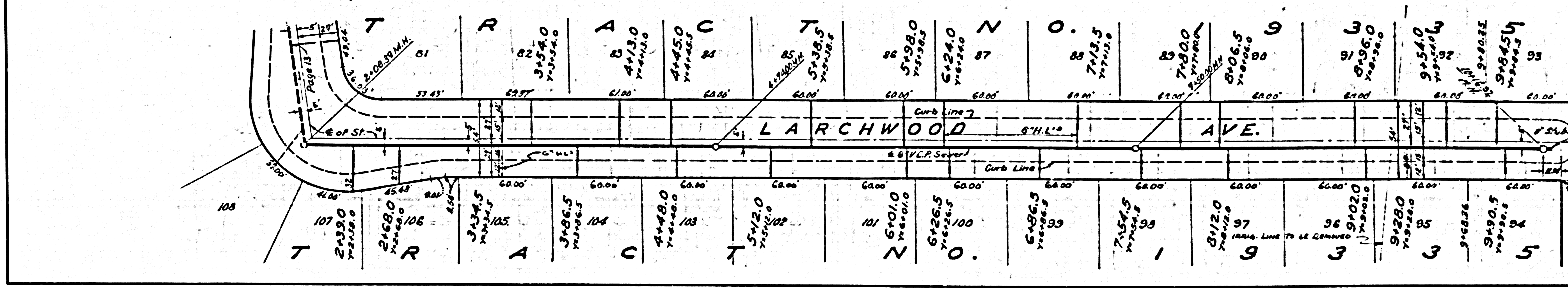
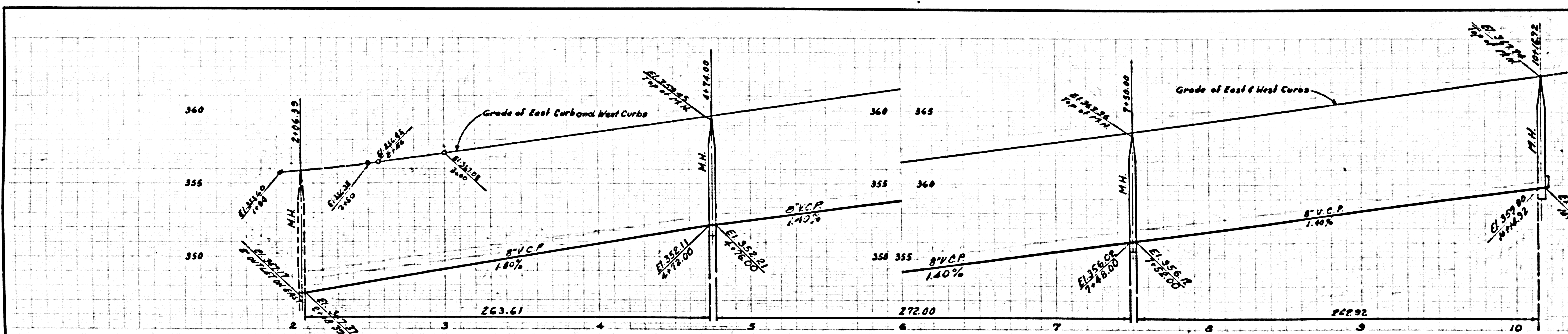


PC. 3862

TRACT NO. 19332

NO CHARGE FOR CONNECTIONS

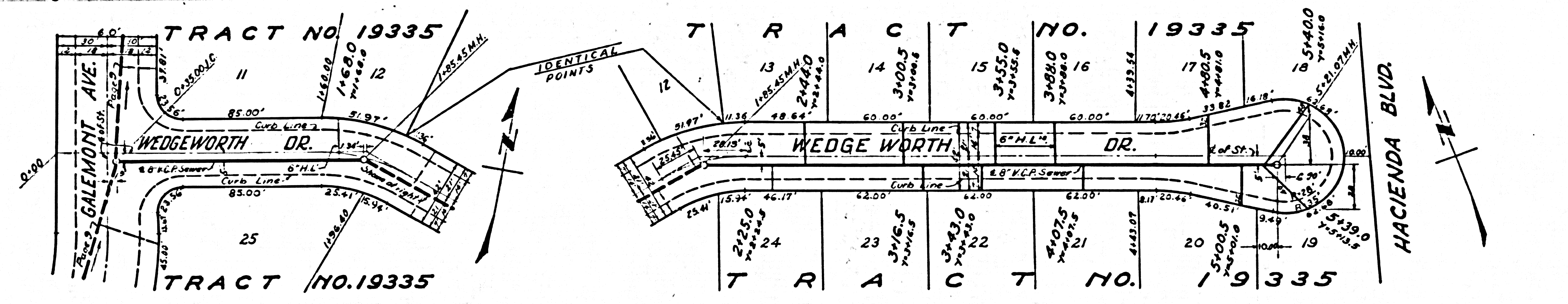
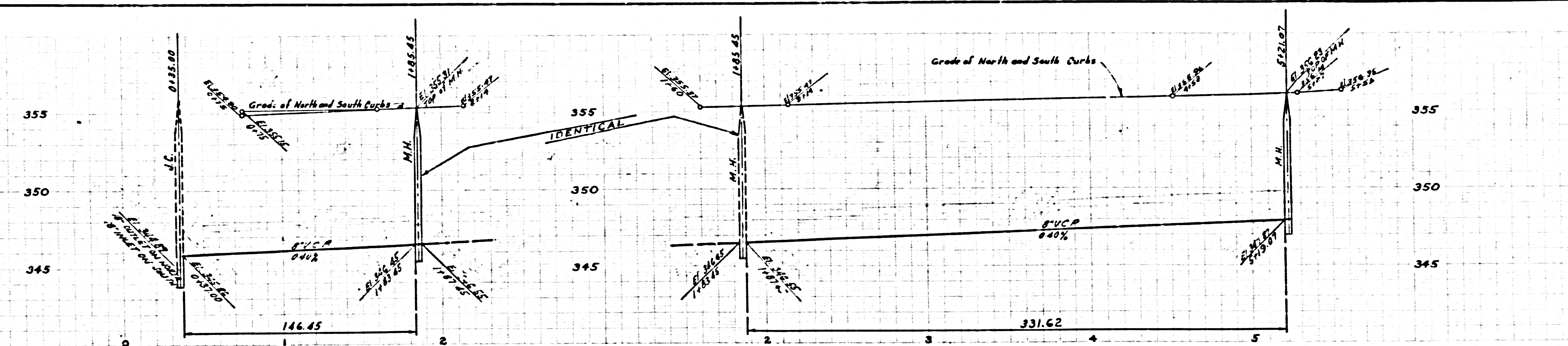
25,225



TRACT NO. 19332

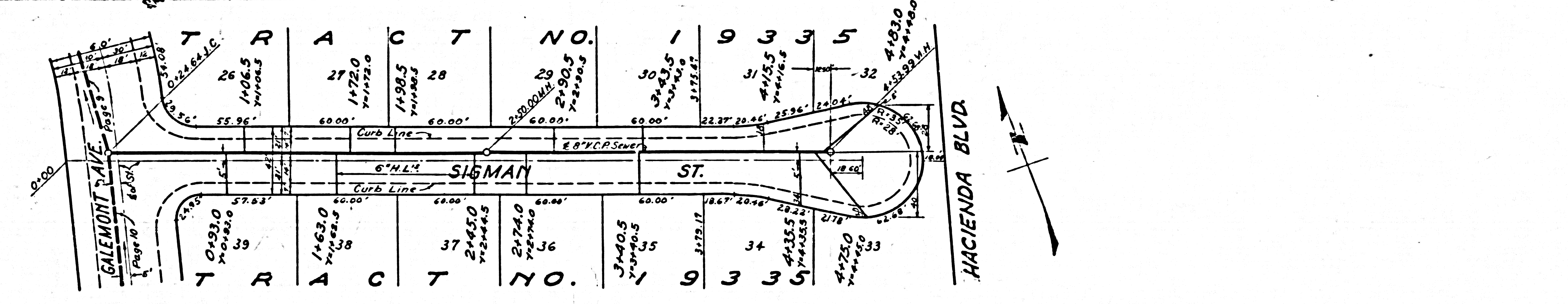
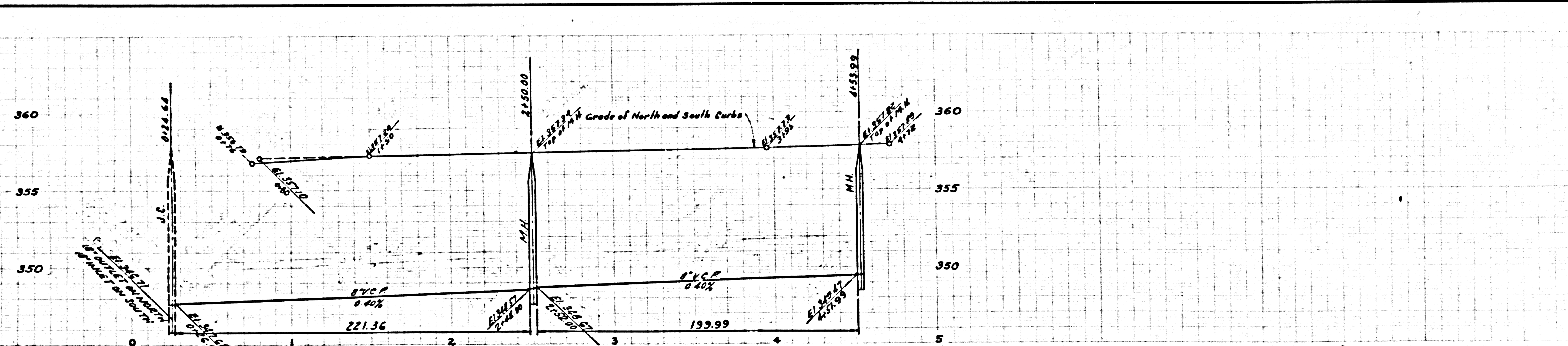
NO CHARGE FOR CONNECTIONS

25,226



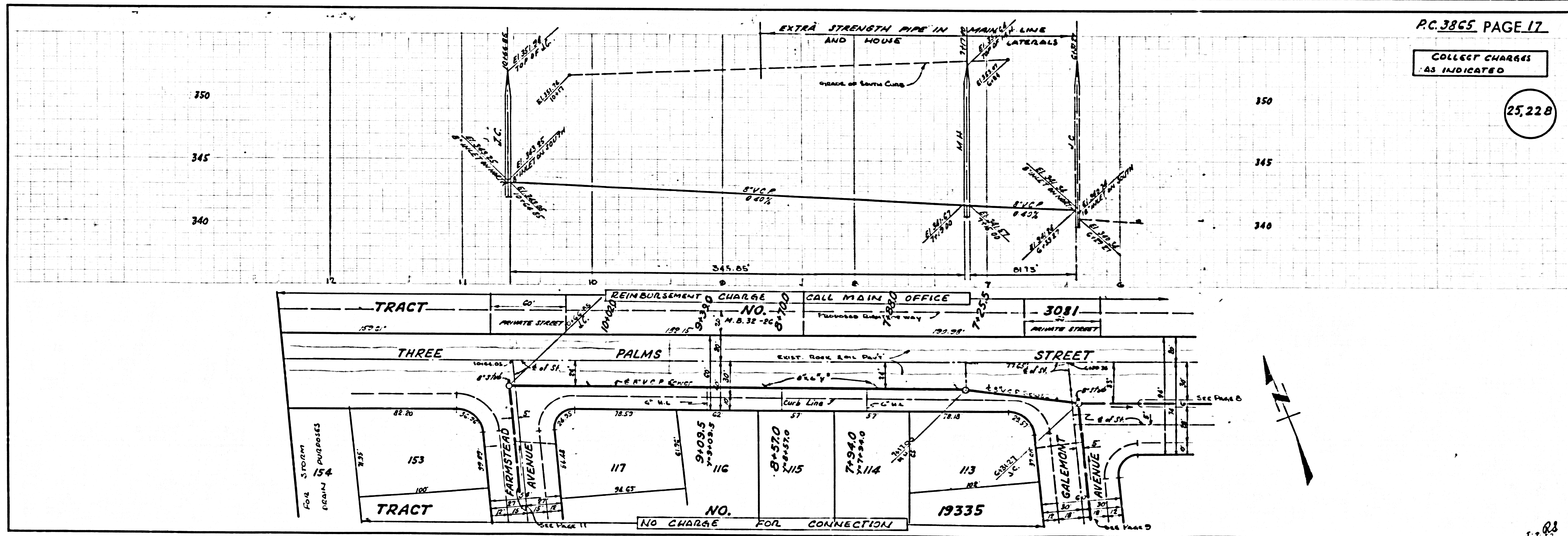
NO CHARGE FOR CONNECTIONS

25,227



PC 3865

PC 3865



P.C. 3865 PAGE 17

COLLECT CHARGES AS INDICATED

25,228

6

P.C. 3862

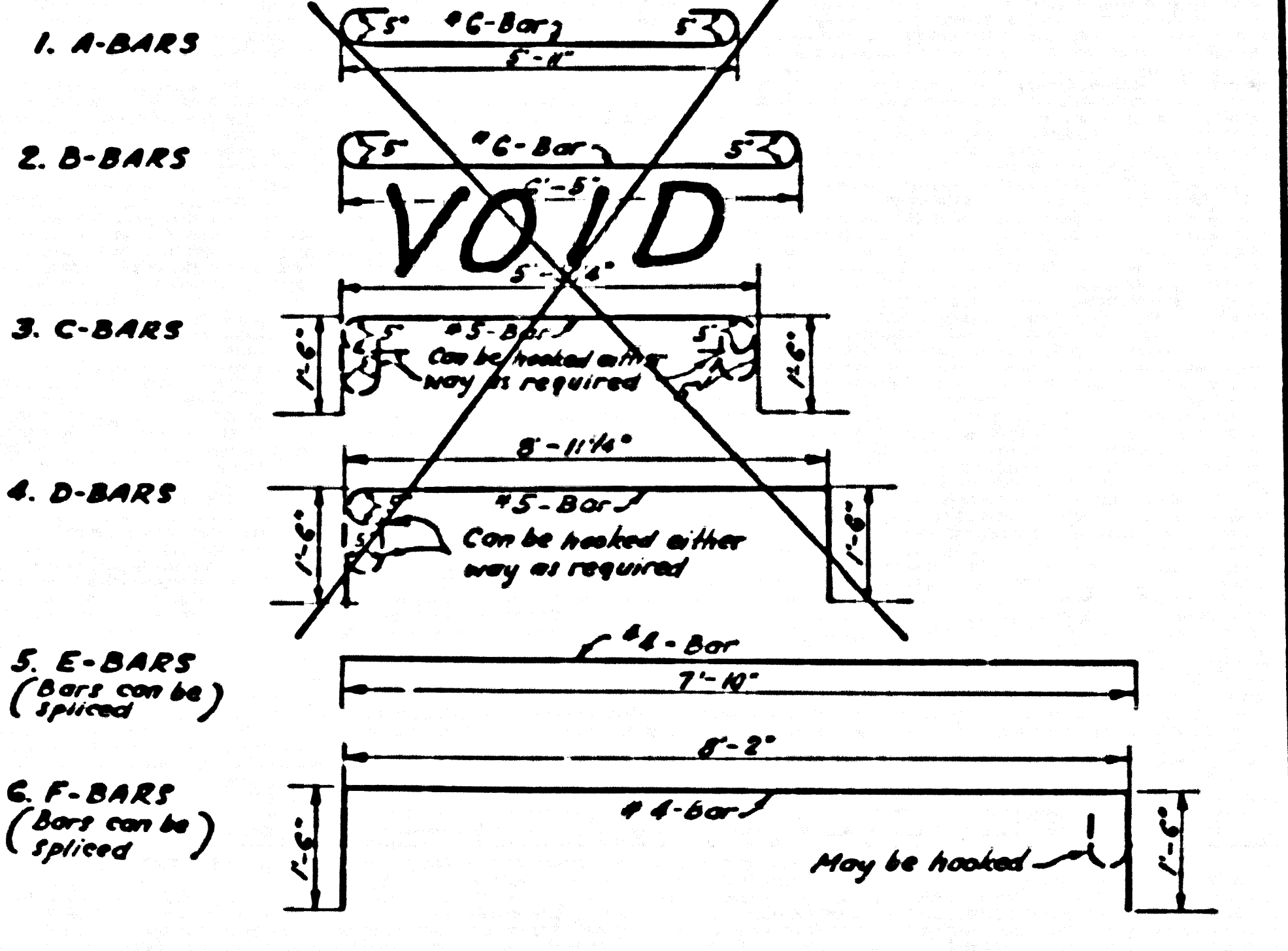
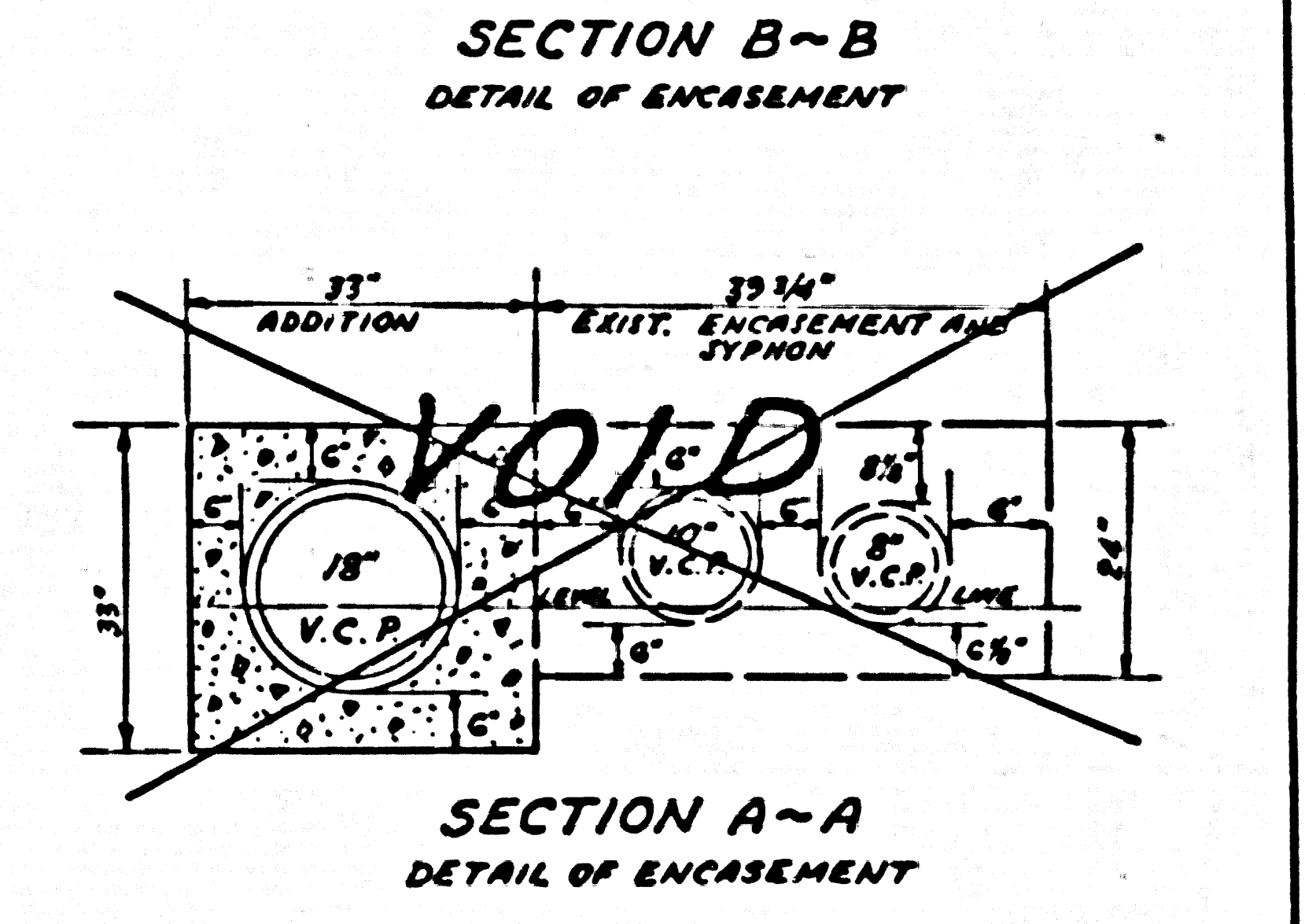
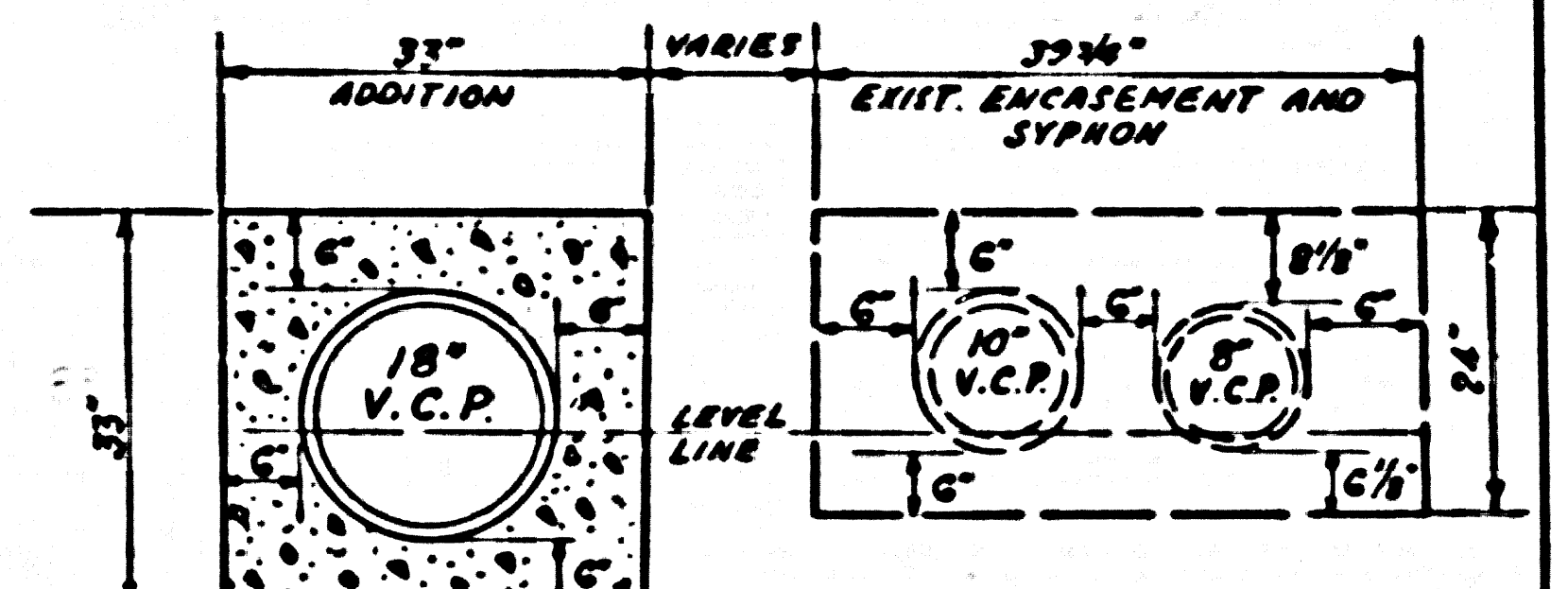
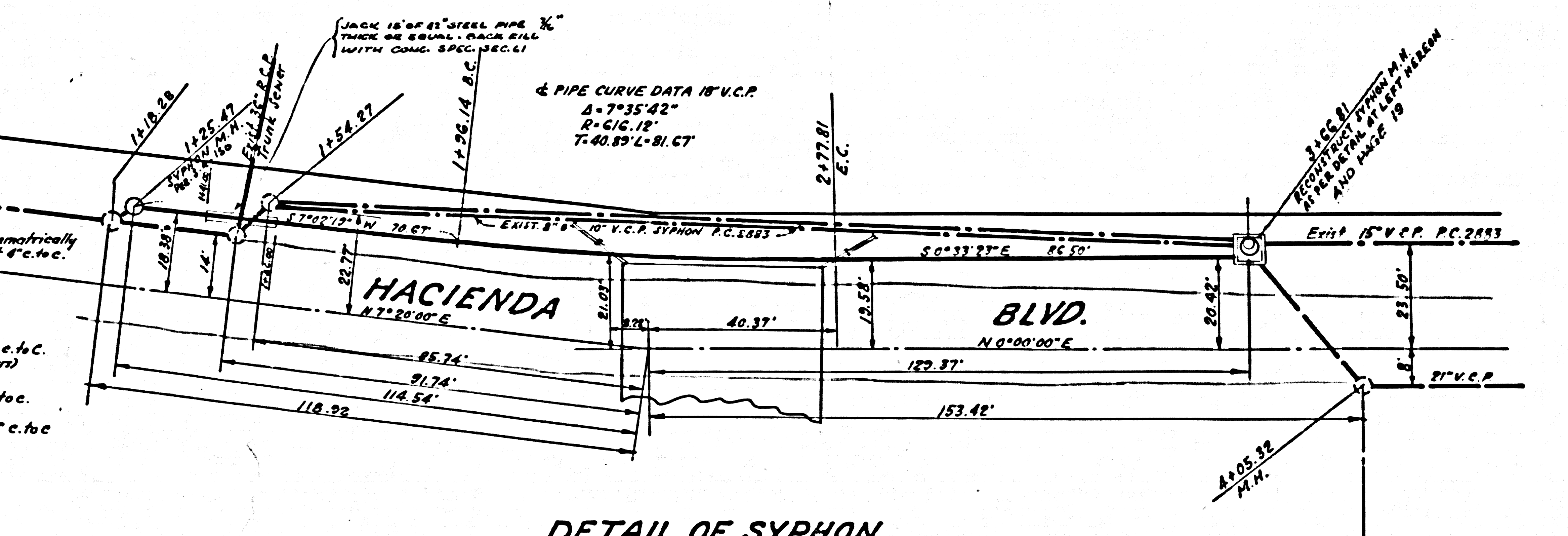
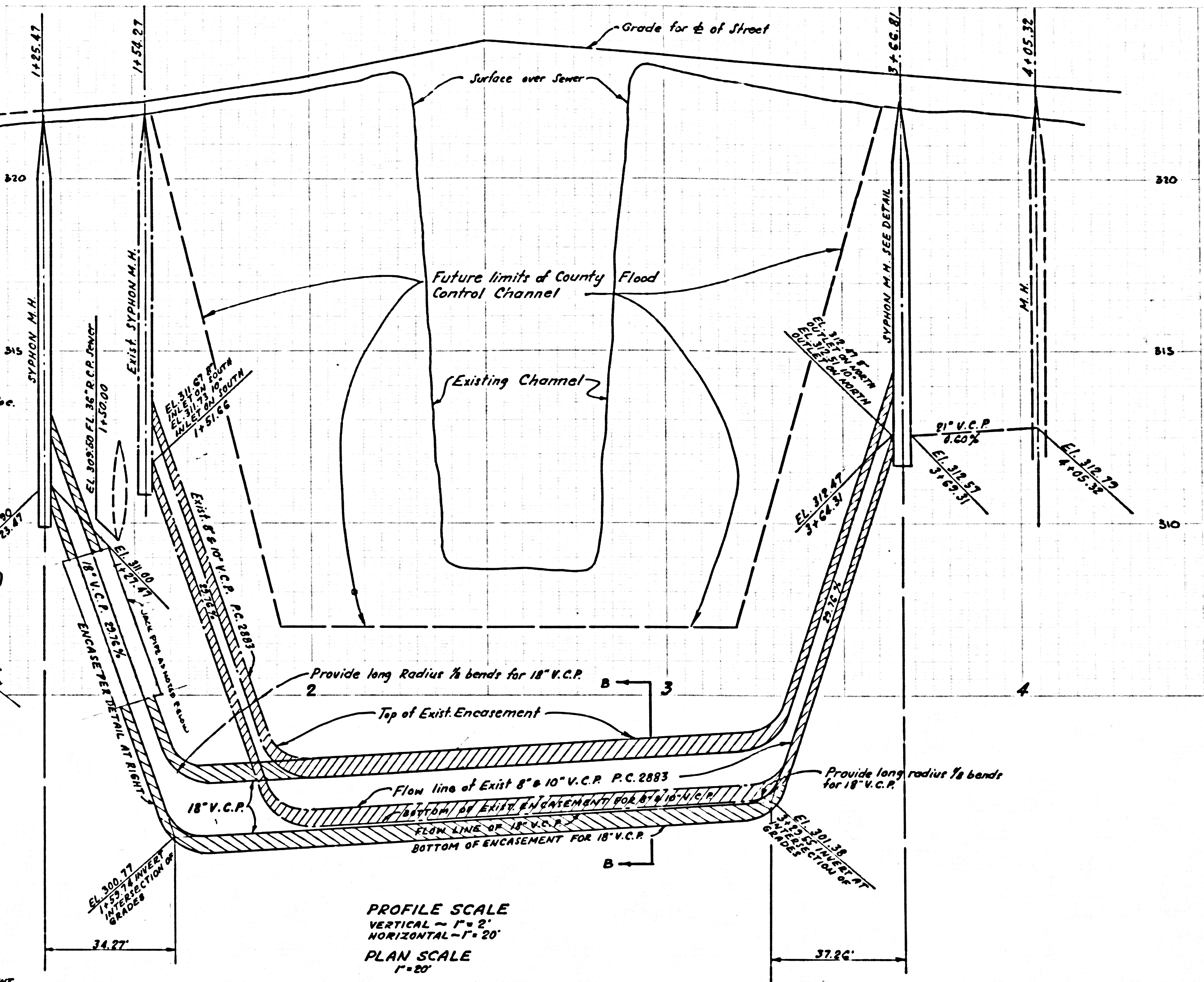
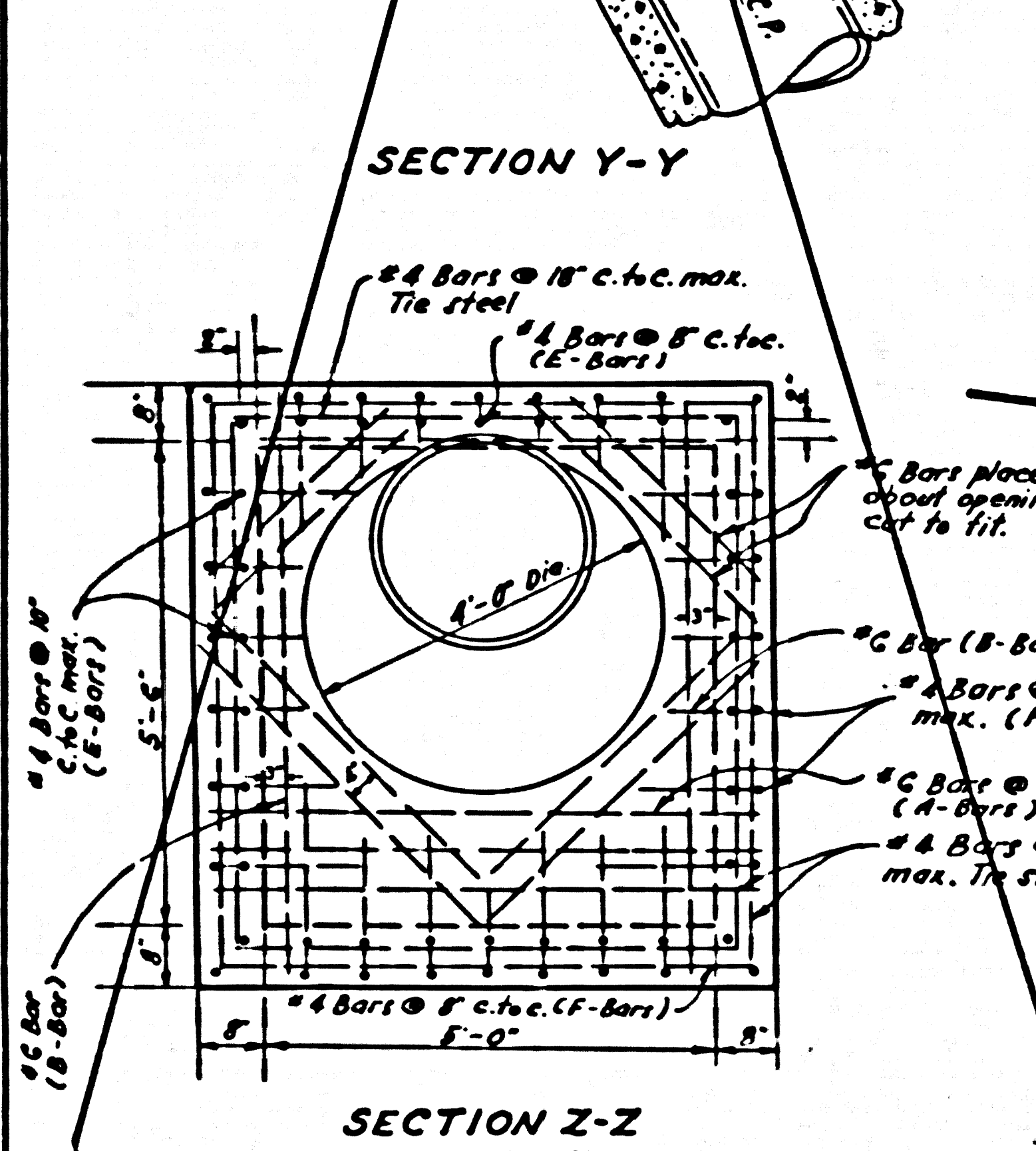
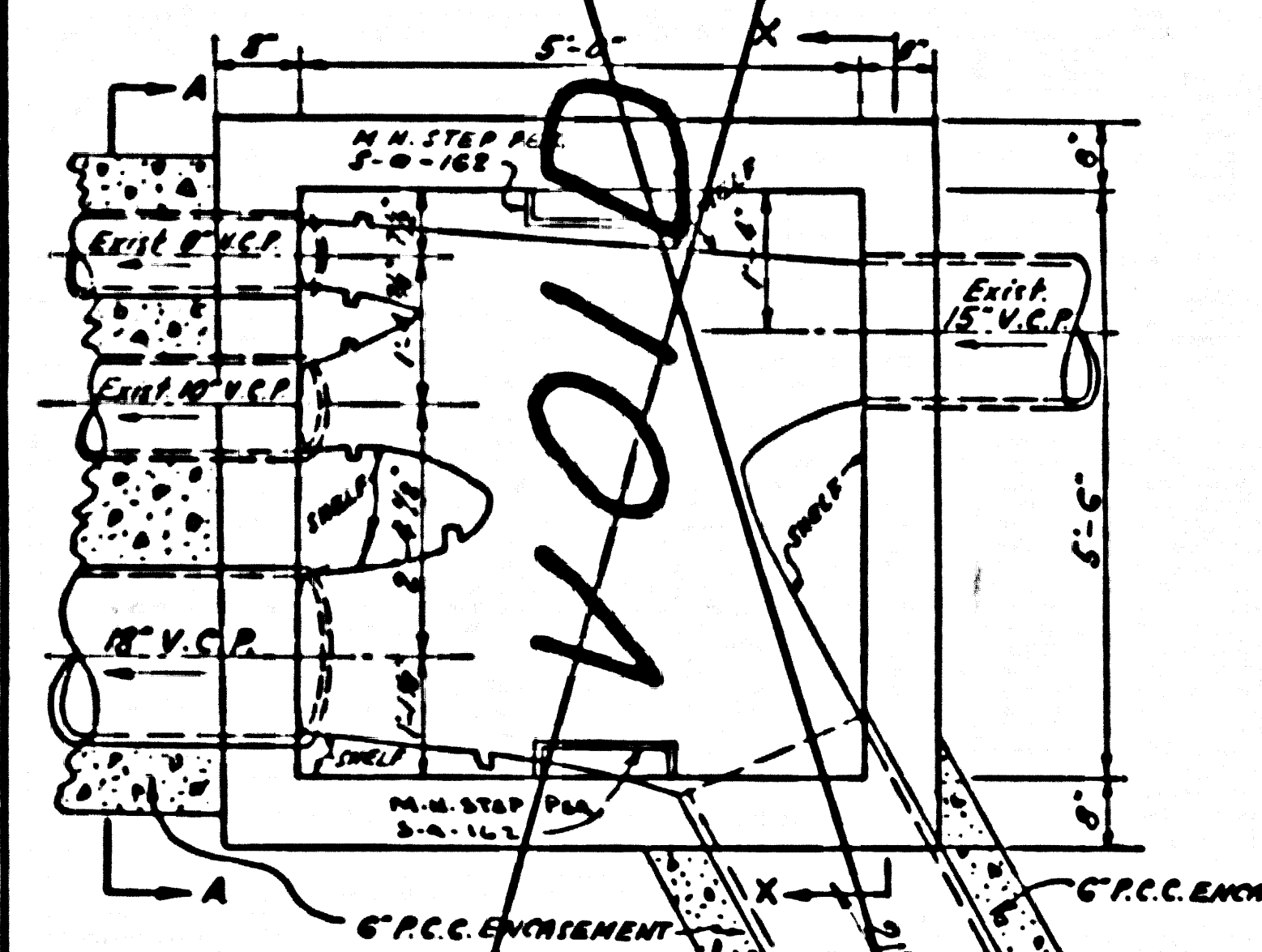
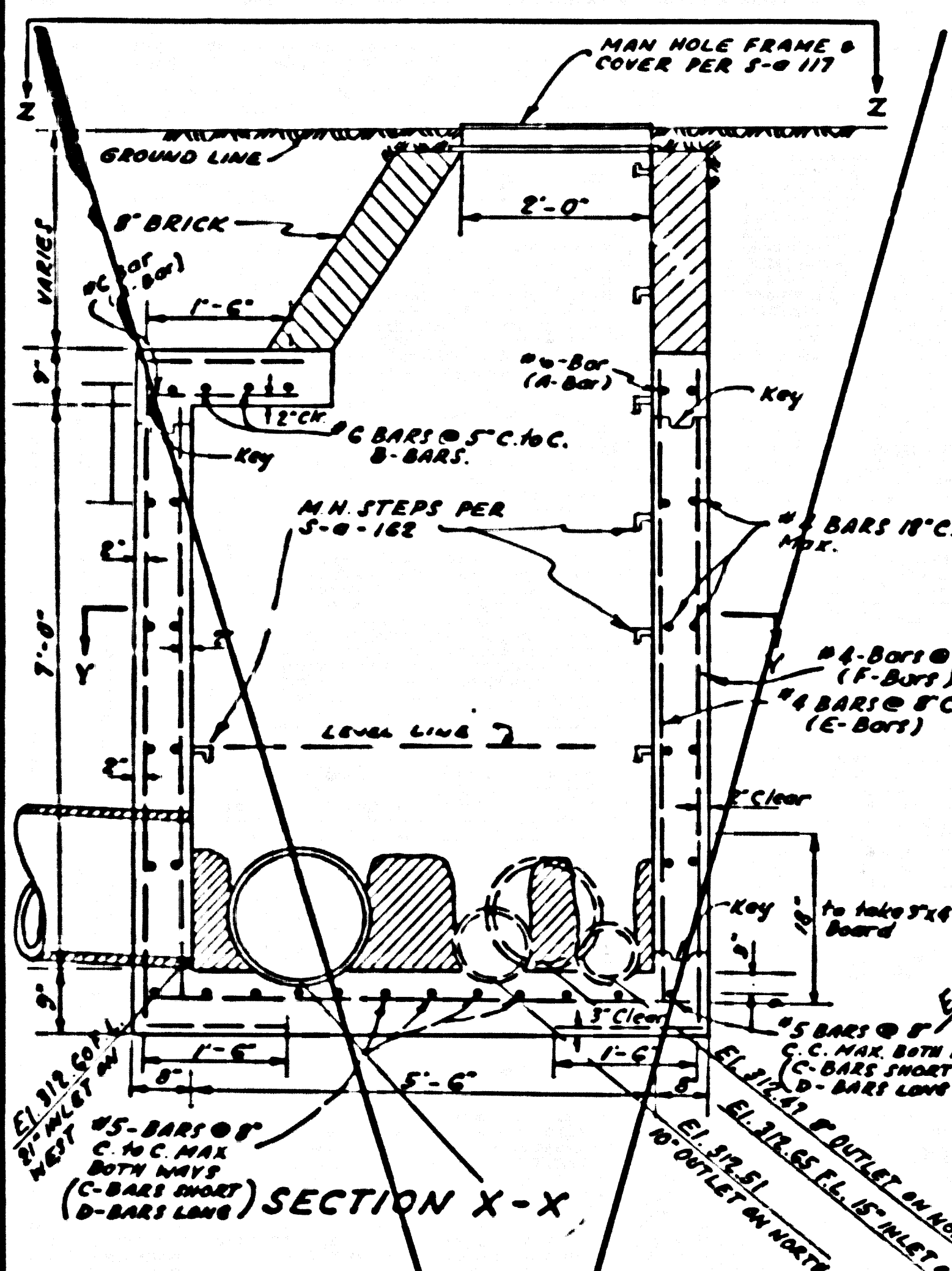
TRACT NO. 19332

23

25,229

FOR
DETAILS SYPHON M.H.
AT STATION 3+66.81
SEE PAGE 19

- Notes:
1. All concrete will reach a minimum compressive strength in 28 days of 3000 psi.
 2. All reinforcing steel shall be deformed bars of intermediate grade $f_y = 20,000$ psi.
 3. Splices may be made of key for ease in construction, overlap of splices 40 bar diameters.
 4. All reinforcing steel to be placed with at least 2" cover on base 3" cover.
 5. All steel to be imbedded in joining wall as shown, where impossible to obtain imbedment due to pipe entrances, etc. use 5" diameter hook.
 6. Concrete shall have maximum Aggregate size of $\frac{3}{4}$ ".



VOID

VOID

DETAIL OF SYPHON

STEEL SCHEDULE

Revised

