

B.M. = 22-2 (C.S.F.B. 761-28) A 3/4" C.S. man. in wall with C.I. cover @ 39.5' W of Cranshaw Blvd. & 88.5' S of Manhattan Beach Blvd. 1.5' back of curb. Elev. = 45.70 U.S.C. & G.S. Datum.

INDEX TABLE

SHEETS	PAGES
1	2

LENNOX BLDG. DIST. NO. 7

- NOTES:
- PROVIDE STAKES ON THE PROPERTY LINE OR PROPERTY LINES PRODUCED AT RIGHT ANGLES TO THE SEWER LINE AT THE CENTER LINE OF EACH MANHOLE.
  - NO REPRESENTATIVE OF THE COUNTY ENGINEER WILL SURVEY OR LAYOUT ANY PORTION OF THE WORK.
  - THE OWNER OR HIS AUTHORIZED REPRESENTATIVE SHALL FURNISH THE COUNTY ENGINEER WITH GRADE SHEETS AND STATION FOR ALL HOUSE LATERALS AND Y BRANCHES AND SHALL PROVIDE STAKES FOR THEM AT THEIR PROPER LOCATIONS WITH STATIONING PLAINLY MARKED. ANY CHANGE IN LOCATION SHALL BE REQUESTED IN WRITING BY THE OWNER OR HIS REPRESENTATIVE.
  - NO REVISIONS SHALL BE MADE IN THESE PLANS WITHOUT THE APPROVAL OF THE COUNTY ENGINEER.
  - USE STANDARD MANHOLE FRAMES AND COVERS, S.A. 117, EXCEPT AS NOTED.
  - USE STANDARD 8" RIGID PIPE EXCEPT AS NOTED.
  - USE CEMENT MORTAR FOR ALL VITRIFIED CLAY PIPE JOINTS.
  - RESURFACE AND FINISH WITHIN PAVED AREA TO MEET L. A. COUNTY ROAD DEPT. OR CALIF. STATE HIGHWAY DEPT. REQUIREMENTS IN ACCORDANCE WITH PERMITS.
  - EXPOSE 40% FEET OF SILVER AT POINTS OF INTERFERENCE WITH POLES, S.A. 119.
  - HOUSE LATERALS TO BE CONSTRUCTED WITH INVERTS AT PROPERTY LINE 5 FEET BELOW CURB GRADE EXCEPT AS NOTED.
  - ALL STRUCTURES SHALL BE 8"-12" SEWER STRUCTURES, S.A. 184, EXCEPT AS NOTED.
  - FOR ALLOWABLE LEAKAGE TEST USE FORMULA NO. \_\_\_\_\_ SPEC. SEC. 31
  - MANHOLE TOPS IN UNIMPROVED RIGHTS-OF-WAY TO BE 6" ABOVE FINISHED GRADE.

PROFILE ALIGNMENT AND GRADE OF  
**SANITARY SEWERS** P.C. 3663  
 TO BE CONSTRUCTED IN PAGE 1  
**TRACT NO. 22464** (22,429)

PRIVATE CONTRACT NO. 3868  
 W.S. 25 (2)  
 1 SHEET, 2 PAGES  
 SCALE: 1" = 40' HORIZ. 1" = 4' VERT.  
 JANUARY, 1956  
 PREPARED IN THE OFFICES OF  
**ENGINEERING SERVICE CORPORATION**  
 BY E. F. X. Collins  
 REG. C. E. NO. 3692

FOR LEGEND SEE PLAN NO. S-A-64

NOTE: GRADES TO WHICH THIS IMPROVEMENT IS TO BE CONSTRUCTED ARE SHOWN ON PLANS AND PROFILES. GRADE POINTS FOR TOP OF CURB, CENTER LINE OF STREETS, OR CENTER LINE OF ALLEYS ARE SHOWN BY CIRCLES ON PROFILES. AT ALL POINTS BETWEEN DESIGNATED POINTS THE GRADE SHALL BE ESTABLISHED SO AS TO CONFORM TO A STRAIGHT LINE DRAWN BETWEEN SAID DESIGNATED POINTS.

ELEVATIONS ARE IN FEET ABOVE U.S.C. & G.S. SEA LEVEL DATUM OF 1929.

THIS DRAWING AND THE DATA HEREON ARE HEREBY MADE A PART OF THE SPECIFICATIONS OF THE COUNTY ENGINEER AND SHALL BE CONSIDERED AS SUCH BY THE CONTRACTOR. THE CONTRACTOR SHALL BE RESPONSIBLE FOR OBTAINING ALL NECESSARY PERMITS FROM THE L. A. COUNTY ROAD DEPT. AND THE STATE HIGHWAY DEPT. BEFORE WORK CAN BE STARTED. THE CONTRACTOR MUST OBTAIN A PERMIT TO EXCAVATE IN COUNTY STREETS FROM THE COUNTY ENGINEER. THE CONTRACTOR SHALL BE RESPONSIBLE FOR OBTAINING ALL NECESSARY PERMITS FROM THE L. A. COUNTY ROAD DEPT. AND THE STATE HIGHWAY DEPT. BEFORE WORK CAN BE STARTED. THE CONTRACTOR MUST OBTAIN A PERMIT TO EXCAVATE IN COUNTY STREETS FROM THE COUNTY ENGINEER. THE CONTRACTOR SHALL BE RESPONSIBLE FOR OBTAINING ALL NECESSARY PERMITS FROM THE L. A. COUNTY ROAD DEPT. AND THE STATE HIGHWAY DEPT. BEFORE WORK CAN BE STARTED. THE CONTRACTOR MUST OBTAIN A PERMIT TO EXCAVATE IN COUNTY STREETS FROM THE COUNTY ENGINEER.

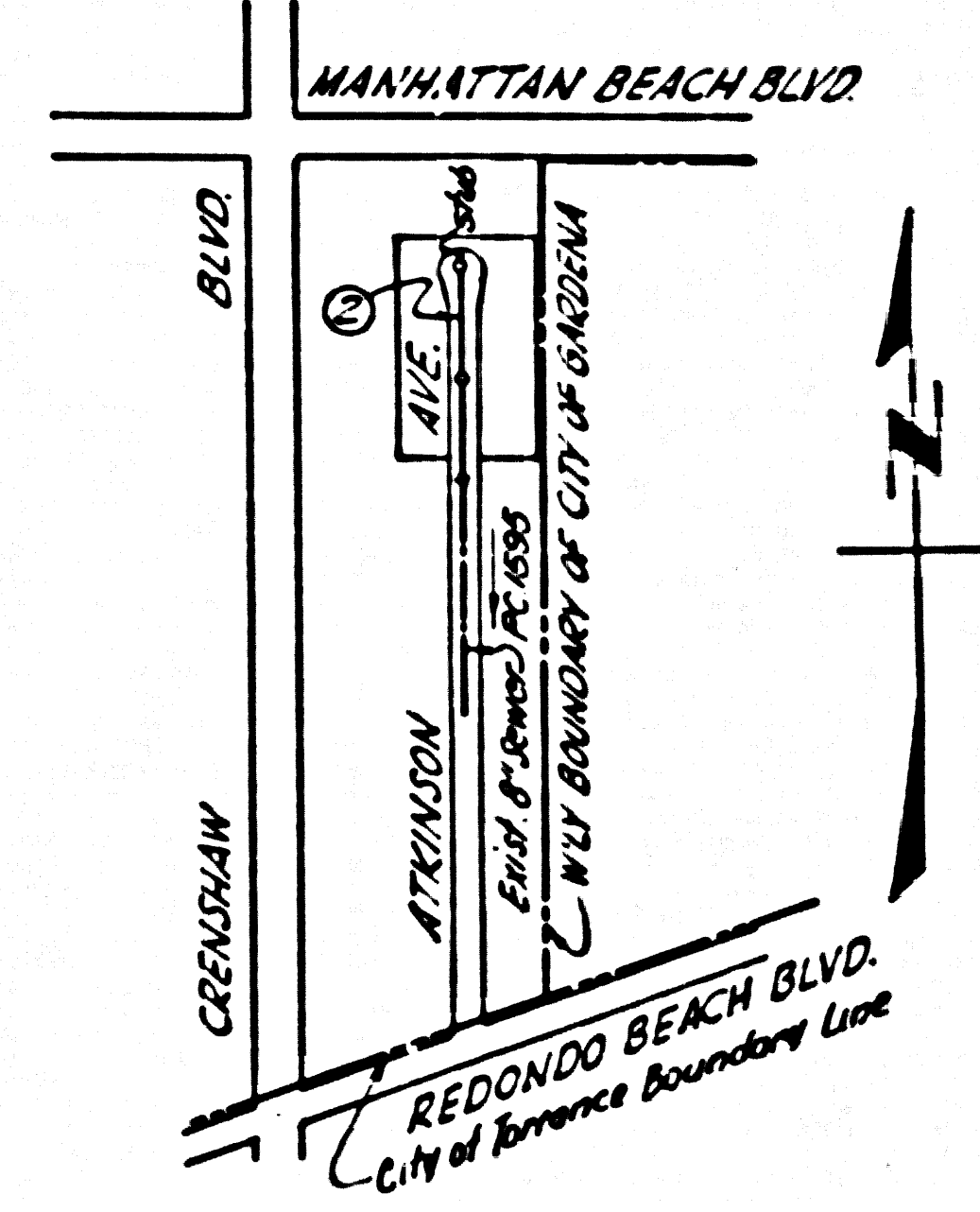
COUNTY OF LOS ANGELES, CALIFORNIA

APPROVED, JOHN A. LAMBE, COUNTY ENGINEER  
 APPROVED, A. M. BAWN, CHIEF ENGINEER  
 TO SAN DIST. NO. 5

BY A. P. Collins SANITATION ENGINEER  
 BY A. Posthumus OFFICE ENGINEER

CHECKED BY R. P. Huber 3-12-56  
 OFFICE OF COUNTY ENGINEER, REG. C. E. NO. 7860

NO CHARGE FOR CONNECTIONS  
 L. Collins 3-8-56

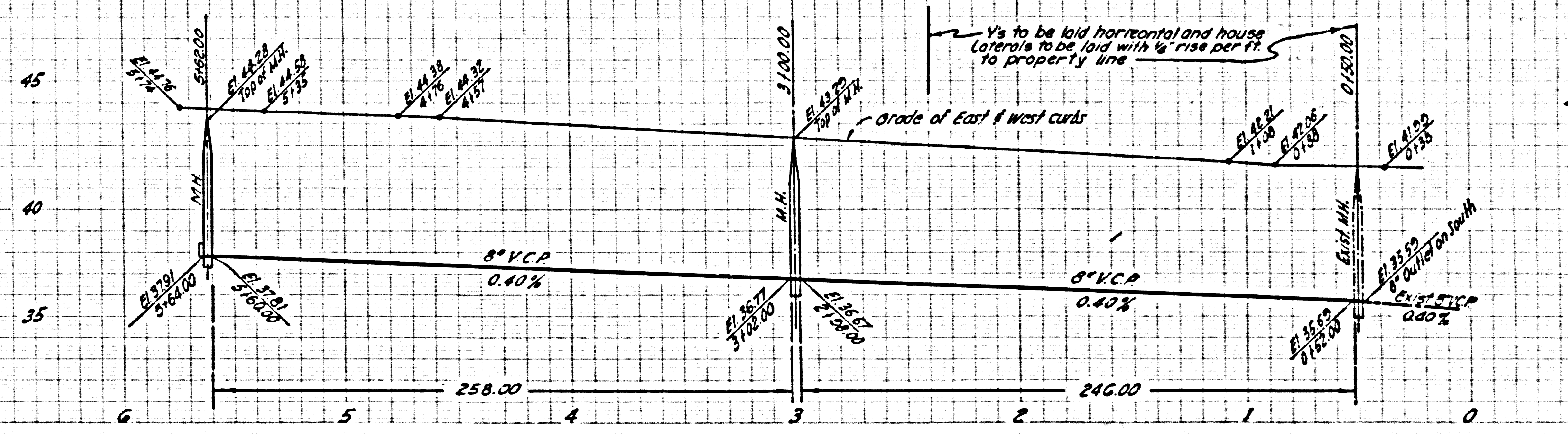


INDEX MAP  
 SCALE 1" = 600'  
 TR. NO. 22464  
 P.C.

Approved: E. F. X. Collins 3-12-56  
 By City Engineer  
 City of Torrance

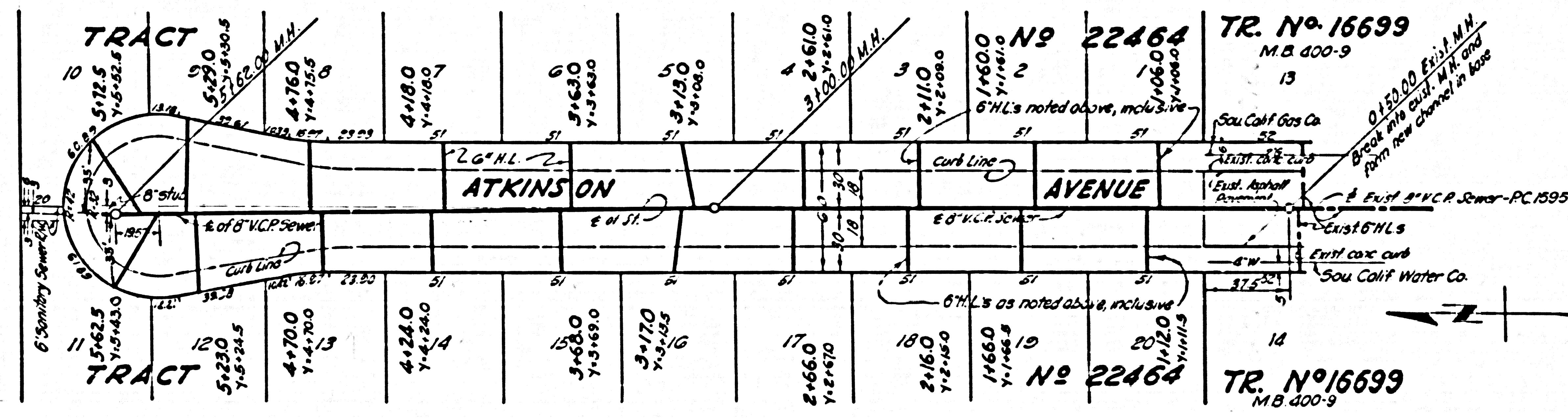
Revised 4-16-56 W. L. ...

P.C. 3868 PAGE 2



NO CHARGE FOR CONNECTIONS

22,430



Revised