

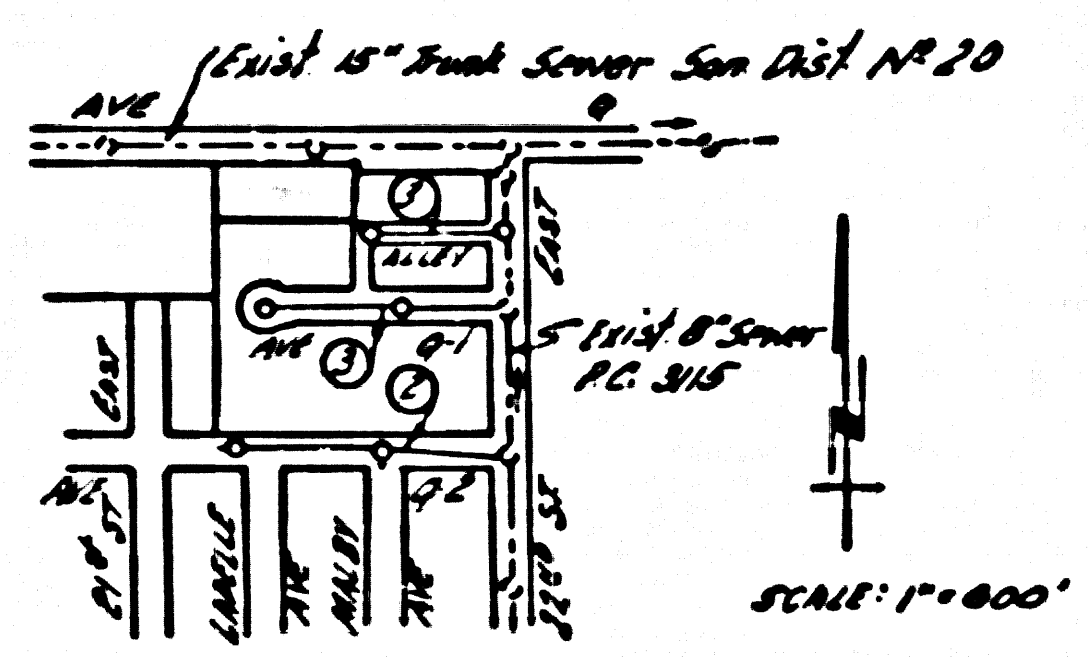
PALMDALE BLDG. DIST. NO. 81

PROFILE ALIGNMENT AND GRADE OF **P.C. 3869**
SANITARY SEWERS PAGE 1
 TO BE CONSTRUCTED IN
TRACT N° 21632 **(22,954)**

B.M. U.S.G.S. 6426 21.2636 421 0.6 Mi.
 North of Palmdale Sta. on S.P.R.R. Std. disk
 on conc. post. 25' W of E of track

- NOTES**
- 1. PROVIDE STAKES ON THE PROPERTY LINE OR PROPERTY LINES PRODUCED AT RIGHT ANGLES TO THE SEWER LINE AT THE CENTER LINE OF EACH MANHOLE.
 - 2. NO REPRESENTATIVE OF THE COUNTY ENGINEER WILL SURVEY OR LAYOUT ANY PORTION OF THE WORK.
 - 3. THE OWNER OR HIS AUTHORIZED REPRESENTATIVE SHALL FURNISH THE COUNTY ENGINEER WITH GRADE SHEETS AND STATIONS FOR ALL HOUSE LATERALS AND BRANCHES AND SHALL PROVIDE STAKES FOR THEM AT THEIR PROPER LOCATIONS WITH STATIONING PLAINLY MARKED. ANY CHANGE IN LOCATION SHALL BE REQUESTED IN WRITING BY THE OWNER OR HIS REPRESENTATIVE.
 - 4. NO REVISIONS SHALL BE MADE IN THESE PLANS WITHOUT THE APPROVAL OF THE COUNTY ENGINEER.
 - 5. USE STANDARD MANHOLE FRAMES AND COVERS, S.A.117, 8" DIA. 15" HIGH.
 - 6. USE STANDARD STRENGTH PIPE EXCEPT AS NOTED.
 - 7. USE CEMENT MORTAR FOR ALL WITHEDED CLAY PIPE JOINTS.
 - 8. RESURFACE ALL TRENCHES WITHIN PAVED AREA TO MEET L. A. COUNTY ROAD DEPT. OR CALIF. STATE HIGHWAY DEPT. REQUIREMENTS IN ACCORDANCE WITH PERMITS.
 - 9. ENCASE FOUR FEET OF SEWER AT POINTS OF INTERFERENCE WITH PCLES, S.A.119.
 - 10. HOUSE LATERALS TO BE CONSTRUCTED WITH INVERTS AT PROPERTY LINE 6" FEET BELOW CURB GRADE EXCEPT AS NOTED.
 - 11. ALL STRUCTURES SHALL BE BRICK SEWER STRUCTURES, S.A.104, 8" DIA. 15" HIGH.
 - 12. FOR ALLOWABLE LEAKAGE TEST USE FORMULA NO. 1, SPCCS, SEC. 32.
 - 13. MANHOLE TOPS IN UNIMPROVED RIGHTS-OF-WAY TO BE 6" ABOVE FINISHED GRADE.
 - 14. Ball all joints with 4" cement mortar within 20 ft. of all property lines.

PRIVATE CONTRACT NO. 3869
 W.S. 63
 2 SHEETS; 3 PAGES
 SCALE: 1" = 10' HORIZ. 1" = 4' VERT. FEB. 1956
 PREPARED IN THE OFFICES OF
R.I. STUCKEY CO.
 REG. C. E. NO. 6067
 FOR LEGEND SEE PLAN NO. S-A-64

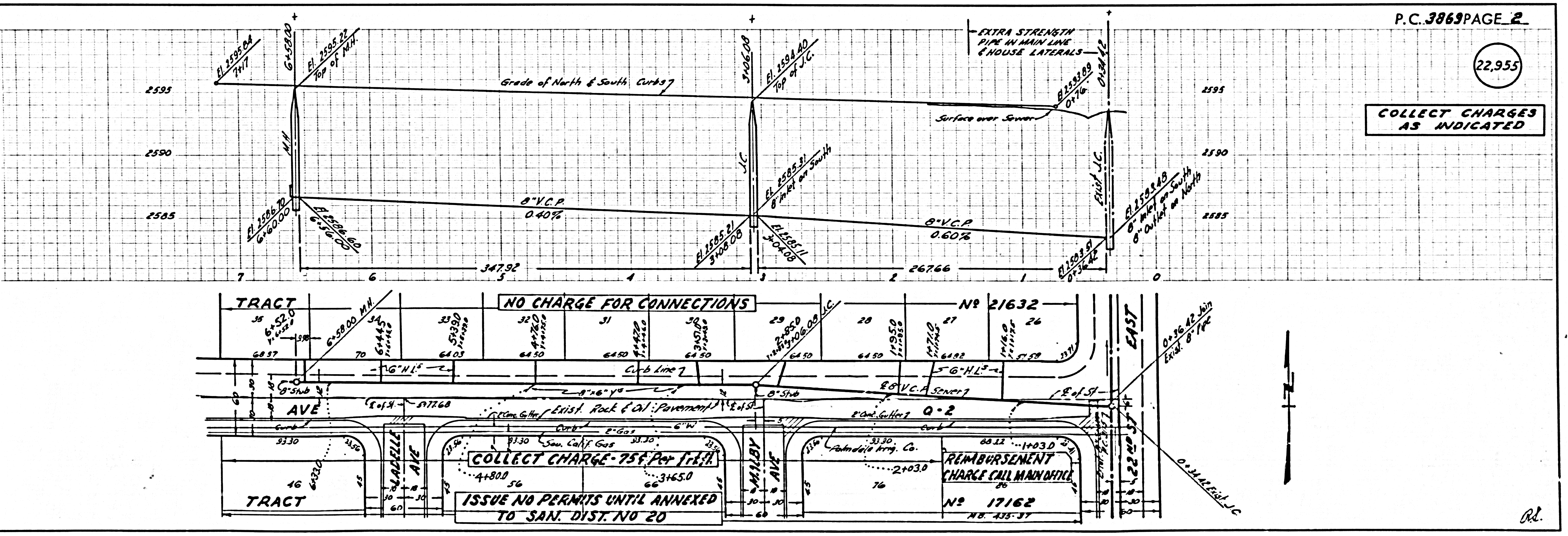


INDEX MAP
 TRACT N° 21632
 P.C. 3869

COLLECT CHARGES AS INDICATED
 2-13-56

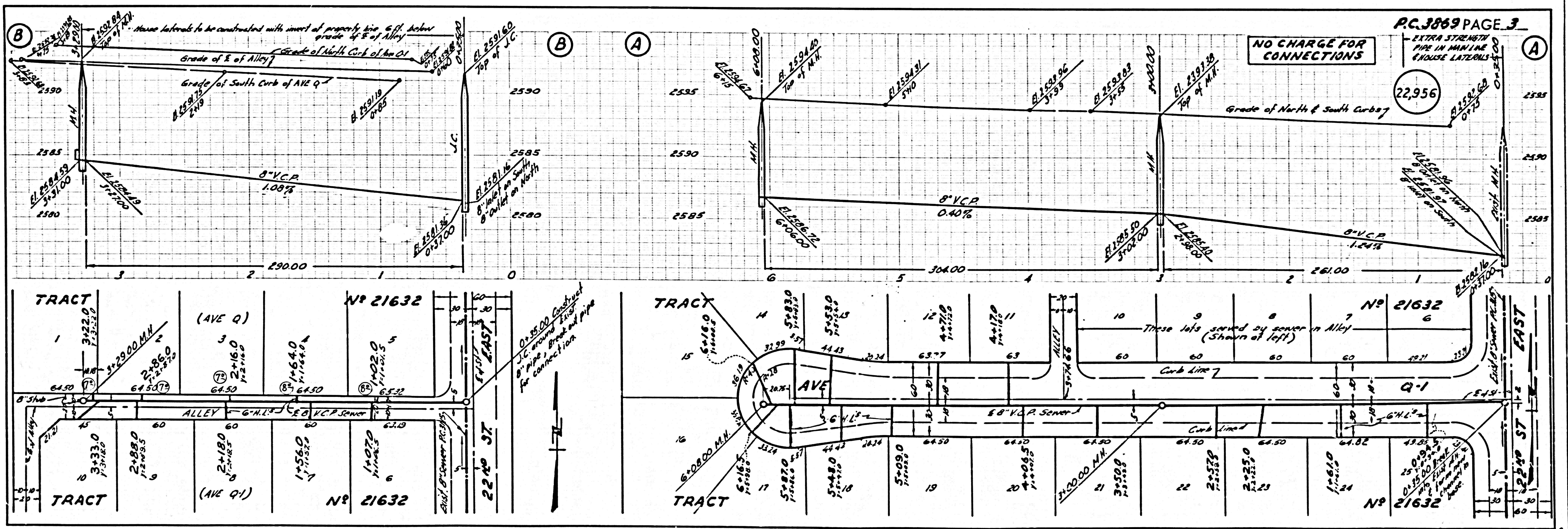
NOTE:
 GRADES TO WHICH THIS IMPROVEMENT IS TO BE CONSTRUCTED ARE SHOWN ON PLANS AND PROFILES. GRADE POINTS FOR TOP OF CURBS, CENTER LINE OF STREETS, OR CENTER LINE OF ALLEYS ARE SHOWN BY CIRCLES ON PROFILES AT ALL POINTS BETWEEN DESIGNATED POINTS. THE GRADE SHALL BE ESTABLISHED SO AS TO CONFORM TO A STRAIGHT LINE DRAWN BETWEEN SAID DESIGNATED POINTS.
 ELEVATIONS AND INVERTS ABOVE U.S.C. & G.S. (Some Upper) Datum of 1929.
 THIS DRAWING AND THE DATA HEREON ARE HEREBY MADE A PART OF THE SPECIFICATIONS.
 WORK SHALL BE CONSTRUCTED ACCORDING TO SPECIFICATIONS ON FILE IN THE OFFICE OF THE COUNTY ENGINEER AND SHALL BE PROSECUTED ONLY BY THE PRESENCE OF THE COUNTY ENGINEER.
 BEFORE WORK CAN BE STARTED THE CONTRACTOR MUST OBTAIN A PERMIT TO EXCAVATE IN COUNTY STREETS FROM THE L. A. COUNTY ROAD DEPT. TIME OF TIME BY AND MAKE A REPORT WITH THE COUNTY ENGINEER, ROOM 524 PAV. AMERICAN BUILDING 532 SO. BROADWAY SUFFICIENT TO COVER THE COST OF CONSTRUCTION INSPECTION AND RECORD PLANS.
 APPROVAL OF THIS PLAN BY THE COUNTY OF LOS ANGELES DOES NOT CONSTITUTE A REPRESENTATION AS TO THE ACCURACY OF THE LOCATION OF OR THE EXISTENCE OR NON-EXISTENCE OF ANY UNDERGROUND UTILITY PIPE, OR STRUCTURE WITHIN THE LIMITS OF THIS PROJECT. THIS NOTE APPLIES TO ALL PAGES.
 IF WORK IS TO BE DONE ON A STATE HIGHWAY, A PERMIT MUST BE OBTAINED FROM THE STATE OF CALIFORNIA, DIVISION OF HIGHWAYS, 120 SOUTH SPRING STREET.
 COUNTY OF LOS ANGELES, CALIFORNIA
 APPROVED, JOHN A. LAMBE, COUNTY ENGINEER
 APPROVED, A. M. BAWN, CHIEF ENGINEER
 BY **A.P. Collins** SANITATION ENGINEER
 BY **A. Posthumus** OFFICE ENGINEER
 CHECKED BY **R.E. Kuhns** 3-13-56
 OFFICE OF COUNTY ENGINEER, REG. C. E. NO. 7860

Checked 6-26-56 M. Larson



P.C. 3869 PAGE 2
COLLECT CHARGES AS INDICATED
 22,955

NO CHARGE FOR CONNECTIONS
COLLECT CHARGE - 75¢ PER 1" DIA.
ISSUE NO PERMITS UNTIL ANNEXED TO SAN. DIST. NO. 20
REIMBURSEMENT CHARGE CALL MAIN OFFICE
NO 17162
 NO. 435-37



P.C. 3869

