

RM. SY 3702 Ekv 59.193
 L.T. 1/4 S. of Curb Return of
 S.W. Corner Ashworth St. and
 Woodruff Ave.

BELLFLOWER BLDG. DIST. NO. 4

PROFILE ALIGNMENT AND GRADE OF P.C. 3874
SANITARY SEWERS PAGE 1
 TO BE CONSTRUCTED IN
SANITARY SEWER RIGHT OF WAY
NORTH OF ASHWORTH STREET (23,268)

PRIVATE CONTRACT NO. 3874 (2)

W.S. 33

— 1 SHEET — 2 PAGES
 SCALE: VERT. 1" = 4' HORIZ. 1" = 100'
 January, 1956
 PREPARED IN THE OFFICES OF
MANNING & DETILLA

BY *Armando J. Apic... Reg. C.E. NO. 7676*

FOR LEGEND SEE PLAN NO. S-A-64

NOTE:
 GRADES TO WHICH THIS IMPROVEMENT IS TO BE CONSTRUCTED ARE SHOWN ON PLANS AND PROFILES. GRADE POINTS FOR TOP OF CURB, CENTER LINE OF STREETS, OR CENTER LINE OF ALLEYS ARE SHOWN BY CIRCLES ON PROFILES AT ALL POINTS BETWEEN DESIGNATED POINTS THE GRADE SHALL BE ESTABLISHED SO AS TO CONFORM TO A STRAIGHT LINE DRAWN BETWEEN SAID DESIGNATED POINTS.
 ELEVATIONS ARE IN FEET ABOVE U.S.C. & G.S. MEAN SEA LEVEL. DATUM OF 1929.
 THIS DRAWING AND THE DATA HEREON ARE HEREBY MADE A PART OF THE SPECIFICATIONS.
 BEFORE WORK CAN BE STARTED, THE CONTRACTOR MUST OBTAIN A PERMIT TO EXCAVATE IN CITY STREETS FROM THE L.A. COUNTY ROAD DEPT., 118 W. 2ND ST. AND MAKE A DEPOSIT WITH THE COUNTY ENGINEER, ROOM 224 FARM ANGLEMAN BUILDING, 333 SO. BROADWAY SUFFICIENT TO COVER THE COST OF CONSTRUCTION INSPECTION AND RECORD PLANS.
 APPROVAL OF THIS PLAN BY THE COUNTY OF LOS ANGELES DOES NOT CONSTITUTE REPRESENTATION AS TO THE ACCURACY OF THE LOCATION OF OR THE EXISTENCE OR NON-EXISTENCE OF ANY UNDERGROUND UTILITY PIPE, OR STRUCTURE WITHIN THE LIMITS OF THIS PROJECT THIS NOTE APPLIES TO ALL PAGES.
 IF WORK IS TO BE DONE IN A STATE HIGHWAY, A PERMIT MUST BE OBTAINED FROM THE STATE OF CALIFORNIA, DIVISION OF HIGHWAYS, 129 SOUTH SPRING STREET.

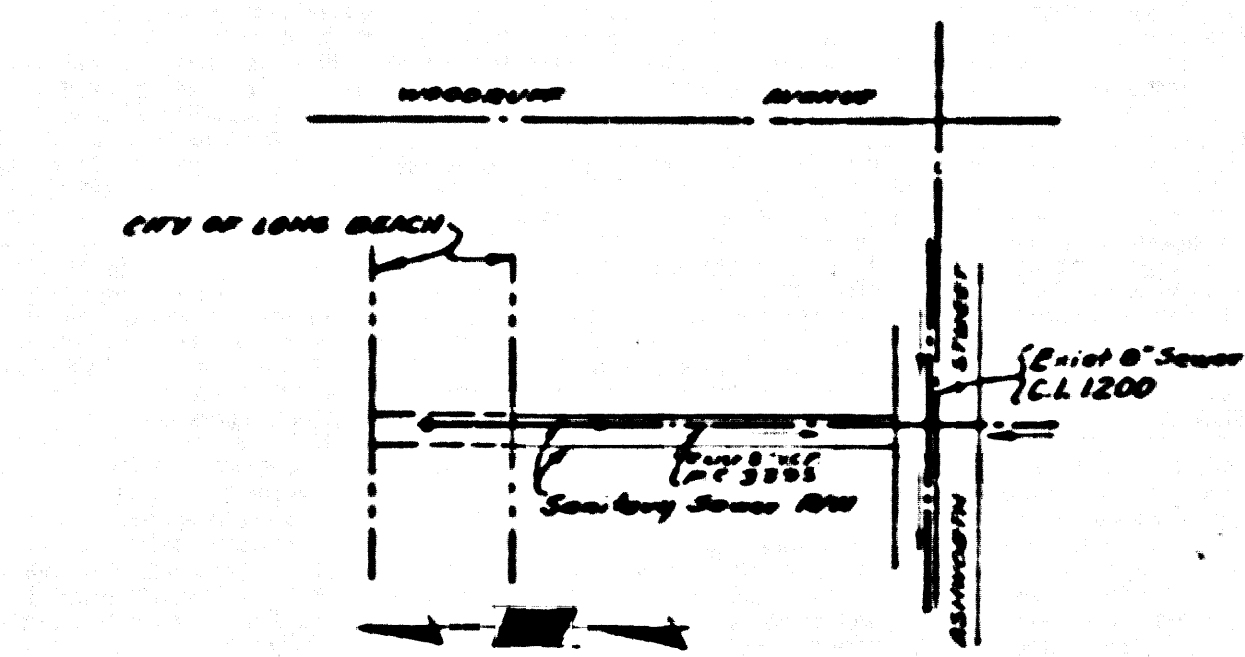
COUNTY OF LOS ANGELES, CALIFORNIA

APPROVED, JOHN A. LAMBE, COUNTY ENGINEER APPROVED, A. M. BAWN, CHIEF ENGINEER
 CO. SAN. DIST. NO. 2
 BY *A. P. Collins* SANITATION ENGINEER BY *E. J. Bennett* OFFICE ENGINEER
 CHECKED BY *J. K. Duda* 2-16-56
 OFFICE OF COUNTY ENGINEER, REG. C. E. NO. 3456

APPROVED: *John H. Johnson*
 CHIEF ENGINEER
 CITY OF LONG BEACH

R.L.

**NO CHARGE
 FOR CONNECTIONS**
J.K. Duda 2-20-56



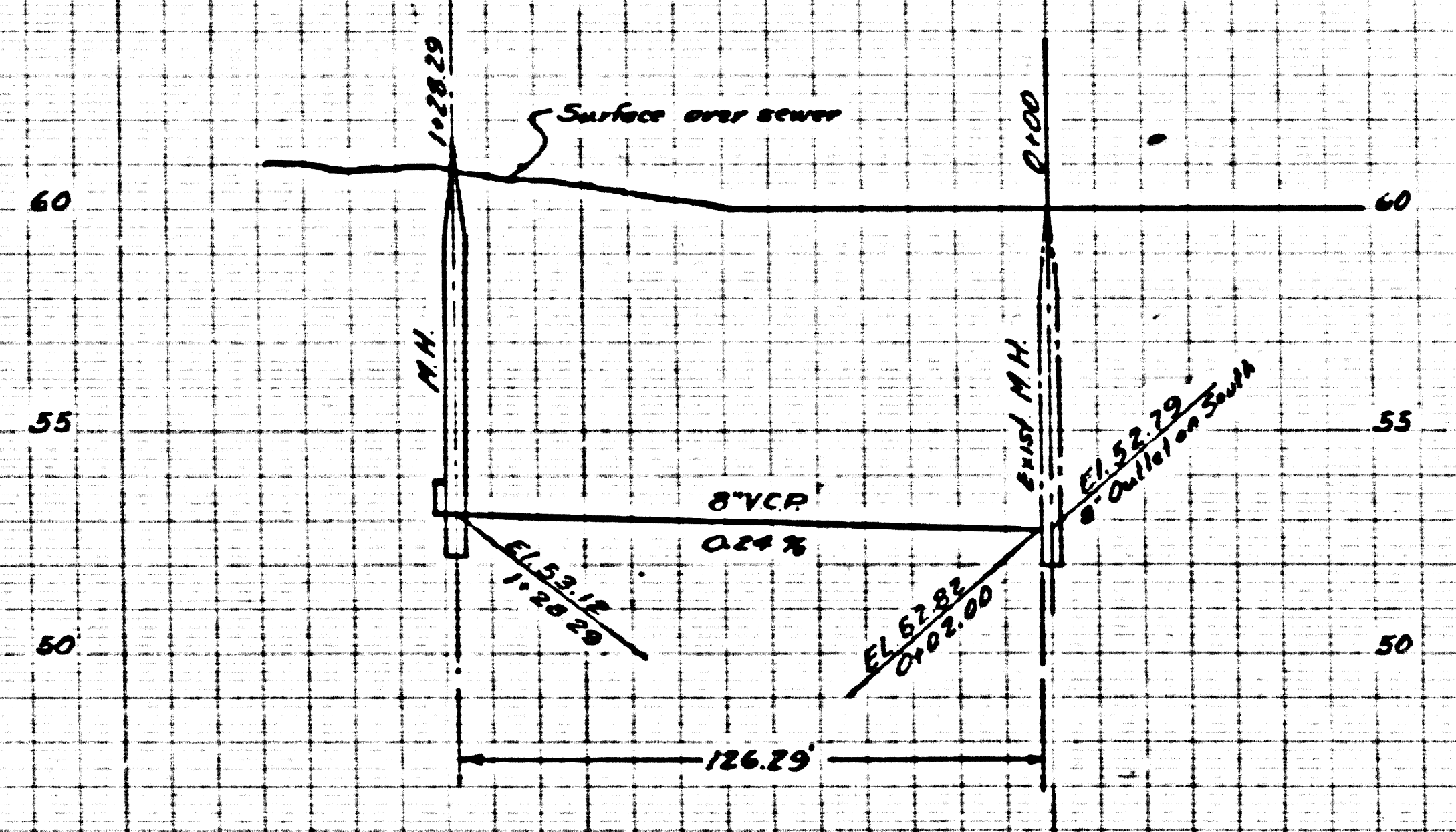
INDEX MAP
 RC 3874
 Scale: 1" = 200'

Looked 8-9-56 M. Soren

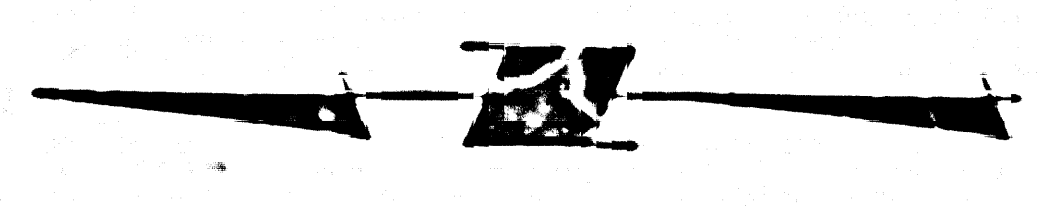
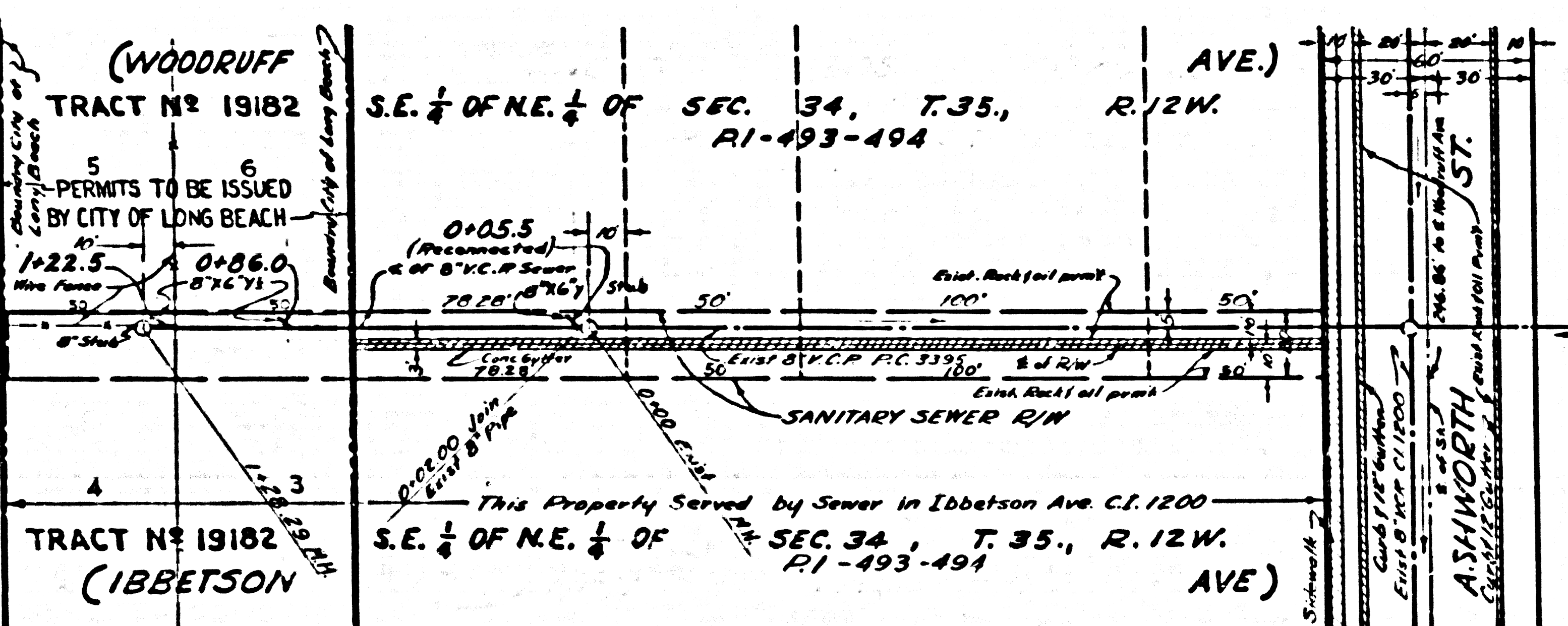
P.C. 3874 PAGE 2

(23,269)

**NO CHARGE
 FOR CONNECTIONS**



NOTE: BEFORE CONSTRUCTION PERMIT IS ISSUED BY COUNTY OF LOS ANGELES, PERMIT FROM CITY OF LONG BEACH MUST BE PRESENTED.



AT&T

R.L.