

LENNOX BLDG. DIST. NO. 7

PROFILE ALIGNMENT AND GRADE OF  
SANITARY SEWERS PAGE 1

TRACT N<sup>o</sup> 20853 23,958

PRIVATE CONTRACT NO. 3876

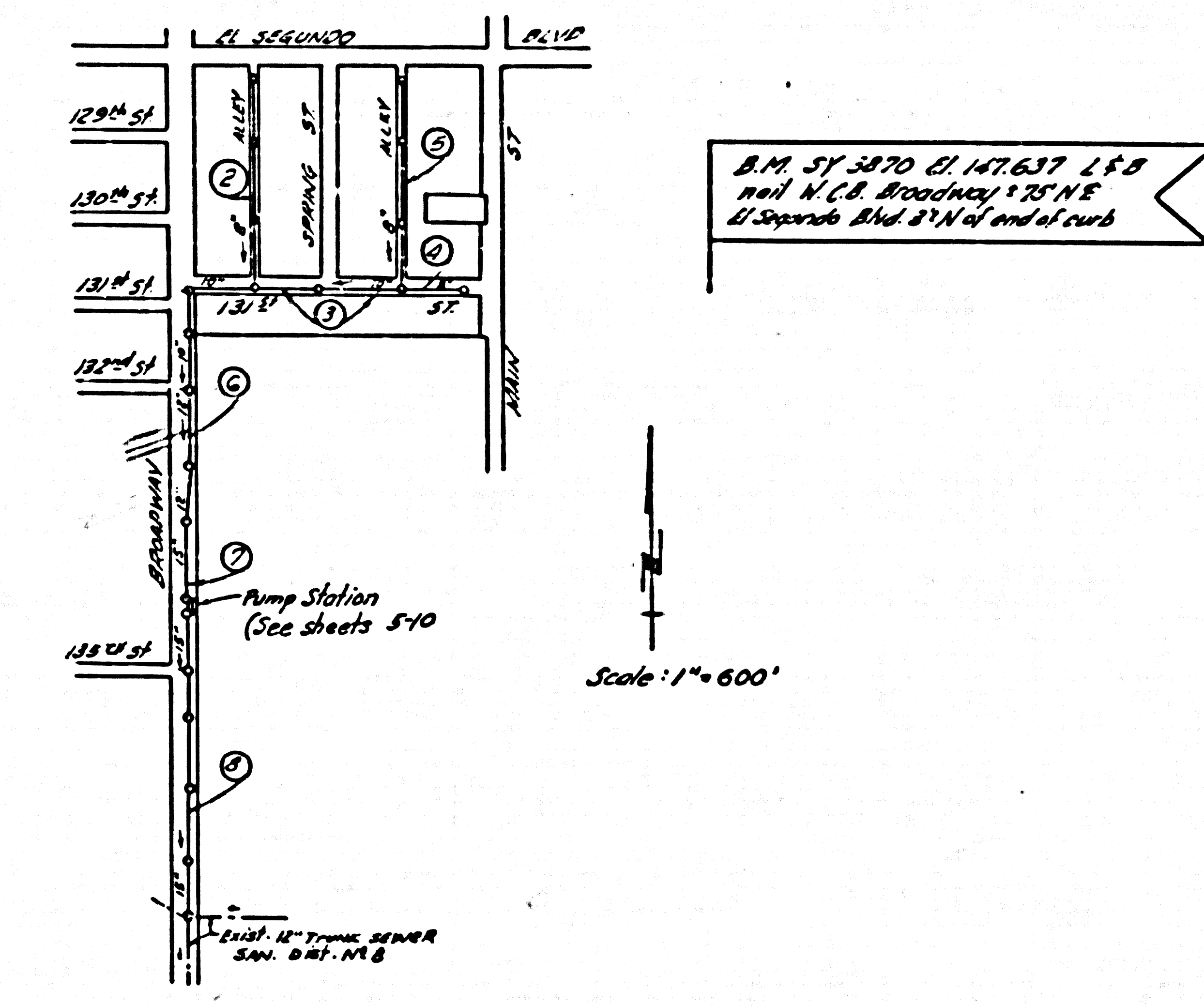
W.S. 26  
10 SHEETS, 3 PAGES

SCALE: 1" = 10' HORIZ. 1" = 4' VERT. APRIL, 1956

PREPARED IN THE OFFICES OF  
HAMNER ENGINEERING CO.

By: *Rayson G. Hamner*  
REG. C. E. NO. 2840

FOR LEGEND SEE PL.'N NO. S-A-64



INDEX MAP  
TRACT N<sup>o</sup> 20853  
P.C. 3876

- NOTES:
1. PROVIDE STAKES ON THE PROPERTY LINE OR PROPERTY LINES PRODUCED AT RIGHT ANGLES TO THE SEWER LINE AT THE CENTER LINE OF EACH MANHOLE.
  2. NO REPRESENTATIVE OF THE COUNTY ENGINEER WILL SURVEY OR LAYOUT ANY PORTION OF THE WORK.
  3. THE OWNER OR HIS AUTHORIZED REPRESENTATIVE SHALL FURNISH THE COUNTY ENGINEER WITH GRADE SHEETS AND STATION FOR ALL HOUSE LATERALS AND Y BRANCHES AND SHALL PROVIDE STAKES FOR THESE AT THEIR PROPER LOCATIONS WITH STATION AND PLAINLY MARKED. ANY CHANGE IN LOCATION SHALL BE REQUESTED BY THE OWNER OR HIS REPRESENTATIVE.
  4. NO REVISIONS SHALL BE MADE IN THESE PLANS WITHOUT THE APPROVAL OF THE COUNTY ENGINEER.
  5. USE STANDARD MANHOLE FRAMES AND COVERS, S.A. 117, EXCEPT AS NOTED.
  6. USE STANDARD STRENGTH PIPE EXCEPT AS NOTED.
  7. USE CEMENT MORTAR FOR ALL VITRIFIED CLAY PIPE JOINTS, EXCEPT AS NOTED.
  8. RESURFACE ALL TRENCH WITHIN PAVED AREA TO MEET L.A. COUNTY ROAD DEPT. OR CALIF. STATE HIGHWAY DEPT. REQUIREMENTS IN ACCORDANCE WITH PLANS.
  9. ENCASE FOUR FEET OF SEWER AT POINTS OF INTERFERENCE WITH POLES, S.A. 119.
  10. HOUSE LATERALS TO BE CONSTRUCTED WITH INVERTS AT PROPERTY LINE 8" BELOW CURB GRADE OR CENTERLINE OF ALLEY, EXCEPT AS NOTED.
  11. ALL STRUCTURES SHALL BE BRICK SEWER STRUCTURE, S.A. 104, EXCEPT AS NOTED.
  12. FOR ALLOWABLE GRADES SEE THE FORMULA NO. 1, S.W.P.'S. SEC. II.
  13. FIGURES IN CIRCLES AT END OF HOUSE LATERALS INDICATE DEPTH AT PROPERTY LINE BELOW GRADE OR CENTERLINE OF ALLEY.
  14. THE PRIVATE ENGINEER IS TO FURNISH THE HOUSE LATERAL DEPTH AT THE PROPERTY LINE BELOW THE TOP OF CURB ELEVATION OR CENTERLINE OF ALLEY FOR EACH HOUSE LATERAL, ON THE GRADE SHEET.

NOTE:  
THE CONTRACTOR SHALL SATISFY HIMSELF OF ALL  
SUBSTRUCTURES AND SHALL BE RESPONSIBLE FOR SAME.

COLLECT CHARGES  
AS INDICATED  
77.77% Basis 5-8-56

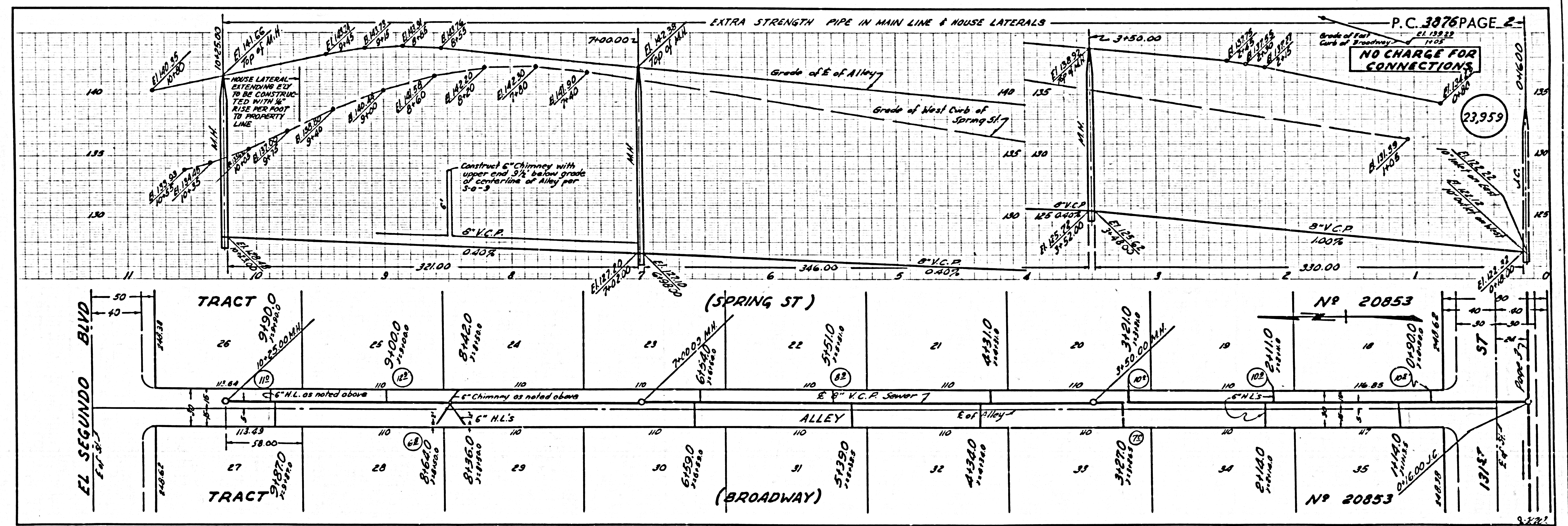
before breaking into any existing structure  
and before final acceptance of this work,  
County Sanitation District should be notified  
in order that required inspection may be made.

NOTE:  
GRADES TO WHICH THIS IMPROVEMENT IS TO BE CONSTRUCTED ARE SHOWN ON PLANS AND PROFILES GRADE POINTS FOR TOP OF CURB, CENTER LINE OF STREETS, OR CENTER LINE OF ALLEYS ARE SHOWN BY CIRCLES ON PROFILES. ALL POINTS BETWEEN DESIGNATED POINTS THE GRADE SHALL BE ESTABLISHED SO AS TO CONFORM TO A STRAIGHT LINE DRAWN BETWEEN SAID DESIGNATED POINTS.  
ELEVATIONS ARE IN FEET ABOVE U.S. F.E.S. SEA LEVEL, DATUM OF 1929.  
THIS DRAWING AND THE DATA HEREON ARE HEREBY MADE A PART OF THE SPECIFICATIONS.  
WORK SHALL BE CONSTRUCTED ACCORDING TO SPECIFICATIONS ON FILE IN THE OFFICE OF THE COUNTY ENGINEER AND SHALL BE PROSECUTED ONLY IN THE PRESENCE OF THE COUNTY ENGINEER.  
BEFORE WORK CAN BE STARTED, THE CONTRACTOR MUST OBTAIN A PERMIT TO EXCAVATE IN COUNTY STREETS FROM THE L.A. COUNTY ROAD DEPT., 108 W. 3RD ST. AND MAKE A DEPOSIT WITH THE COUNTY ENGINEER, ROOM 354 PAN AMERICAN BUILDING, 215 SO. BROADWAY SUFFICIENT TO COVER THE COST OF CONSTRUCTION INSPECTION AND RECORD PLANS.  
APPROVAL OF THIS PLAN BY THE COUNTY OF LOS ANGELES DOES NOT CONSTITUTE A REPRESENTATION AS TO THE ACCURACY OF THE LOCATION OF OR THE EXISTENCE OR NON-EXISTENCE OF ANY UNDERGROUND UTILITY PIPE, OR STRUCTURE WITHIN THE LIMITS OF THIS PROJECT. THIS NOTE APPLIES TO ALL PAGES.  
IF WORK IS TO BE DONE ON A STATE HIGHWAY, A PERMIT MUST BE OBTAINED FROM THE STATE OF CALIFORNIA, DIVISION OF HIGHWAYS, 120 SOUTH SPRING STREET.

COUNTY OF LOS ANGELES, CALIFORNIA

APPROVED, JOHN A. LAMBE, COUNTY ENGINEER  
APPROVED, A. M. RAWN, CHIEF ENGINEER  
BY: *A.P. Collins* SANITATION ENGINEER  
BY: *A. Posthumus* CHIEF ENGINEER  
CHECKED BY: *J.K. Duda* 5-16-56  
OFFICE OF COUNTY ENGINEER, Bldg. C. E. NO. 9406

*Revised 1-17-57 W. Laven*



P.C. 3876 PAGE 2

NO CHARGE FOR CONNECTIONS

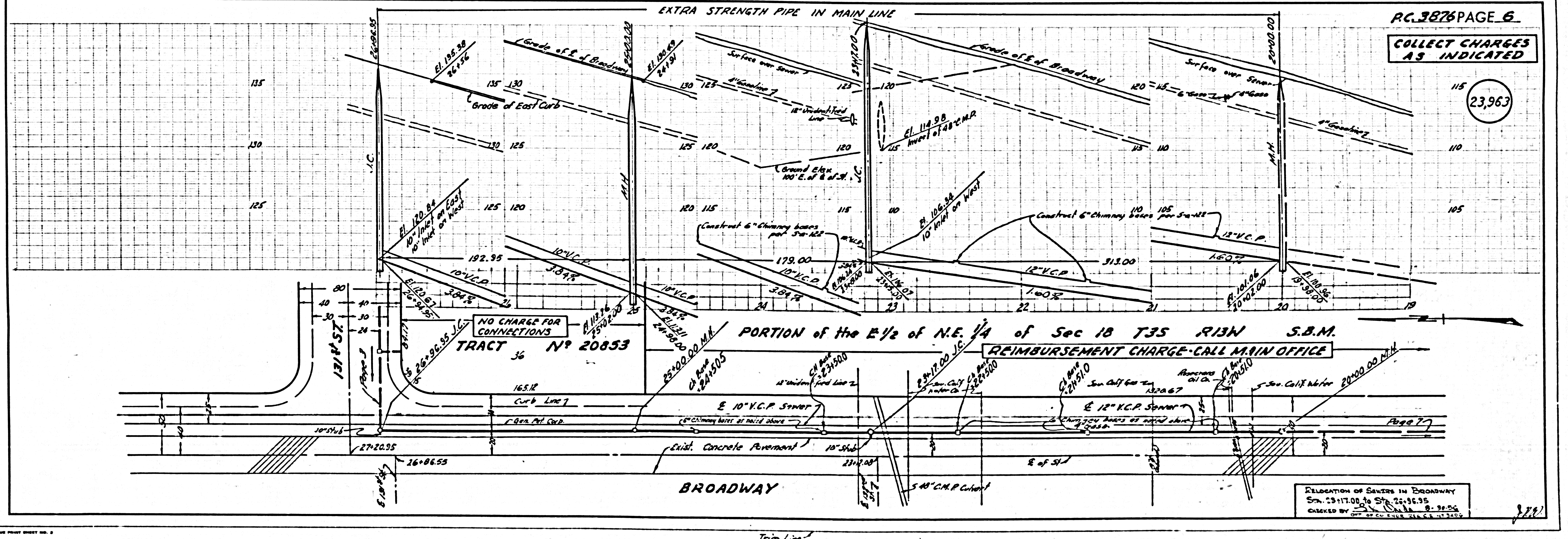
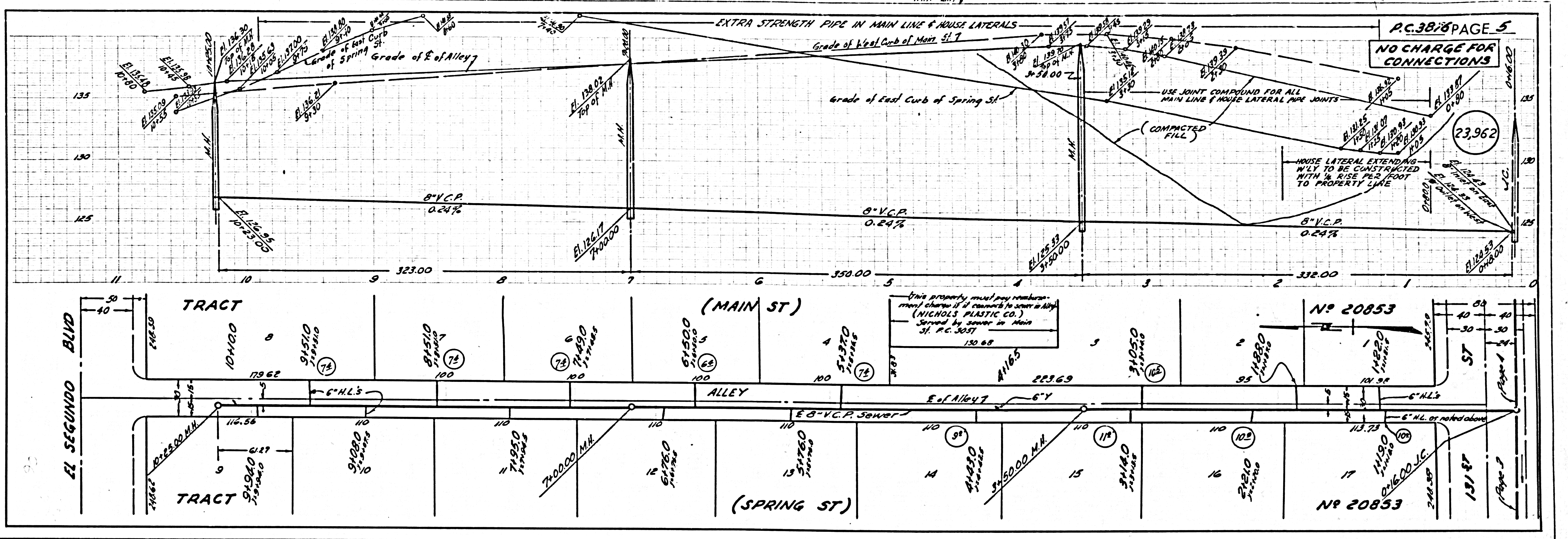
23,959

Trim Line









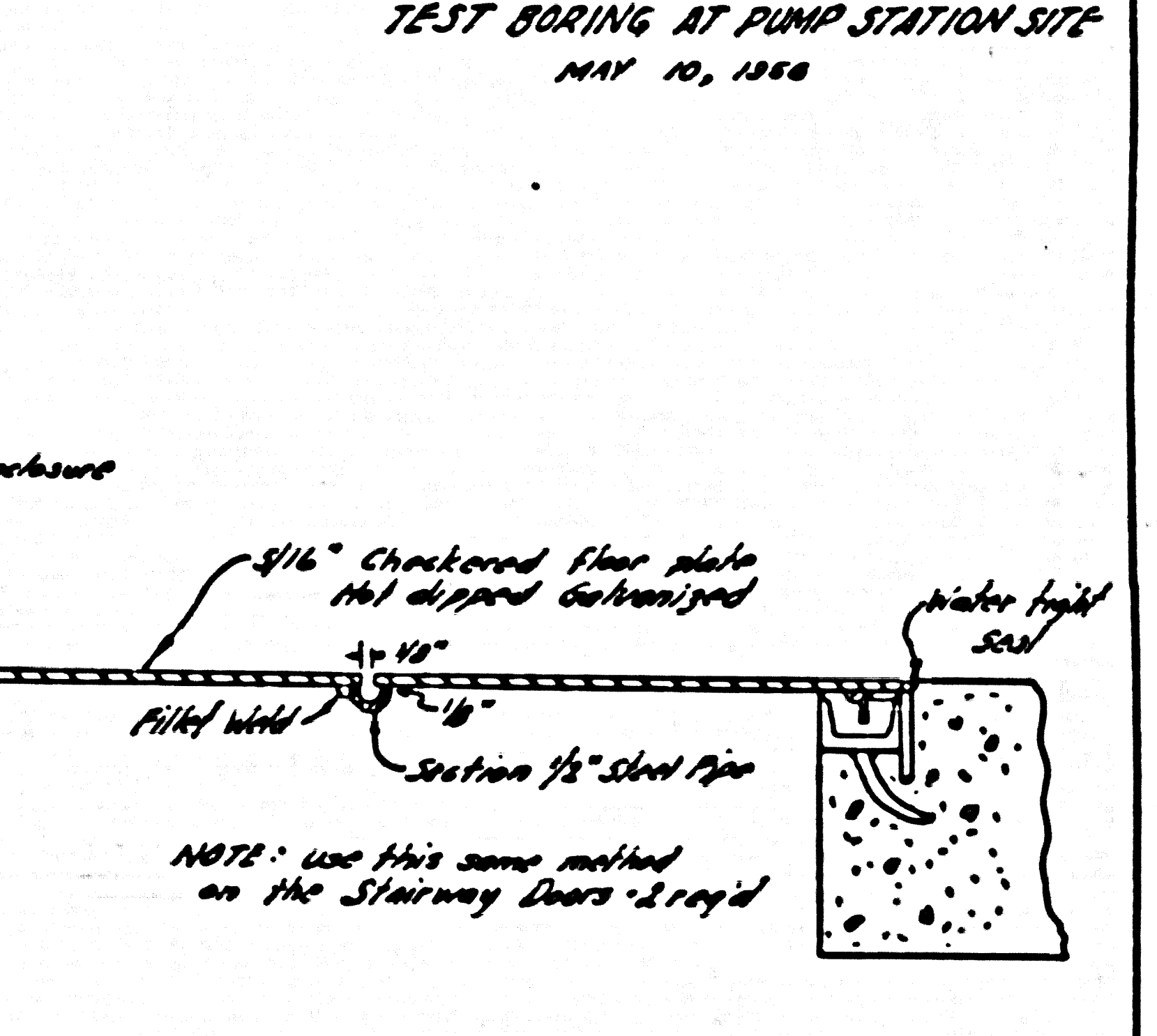
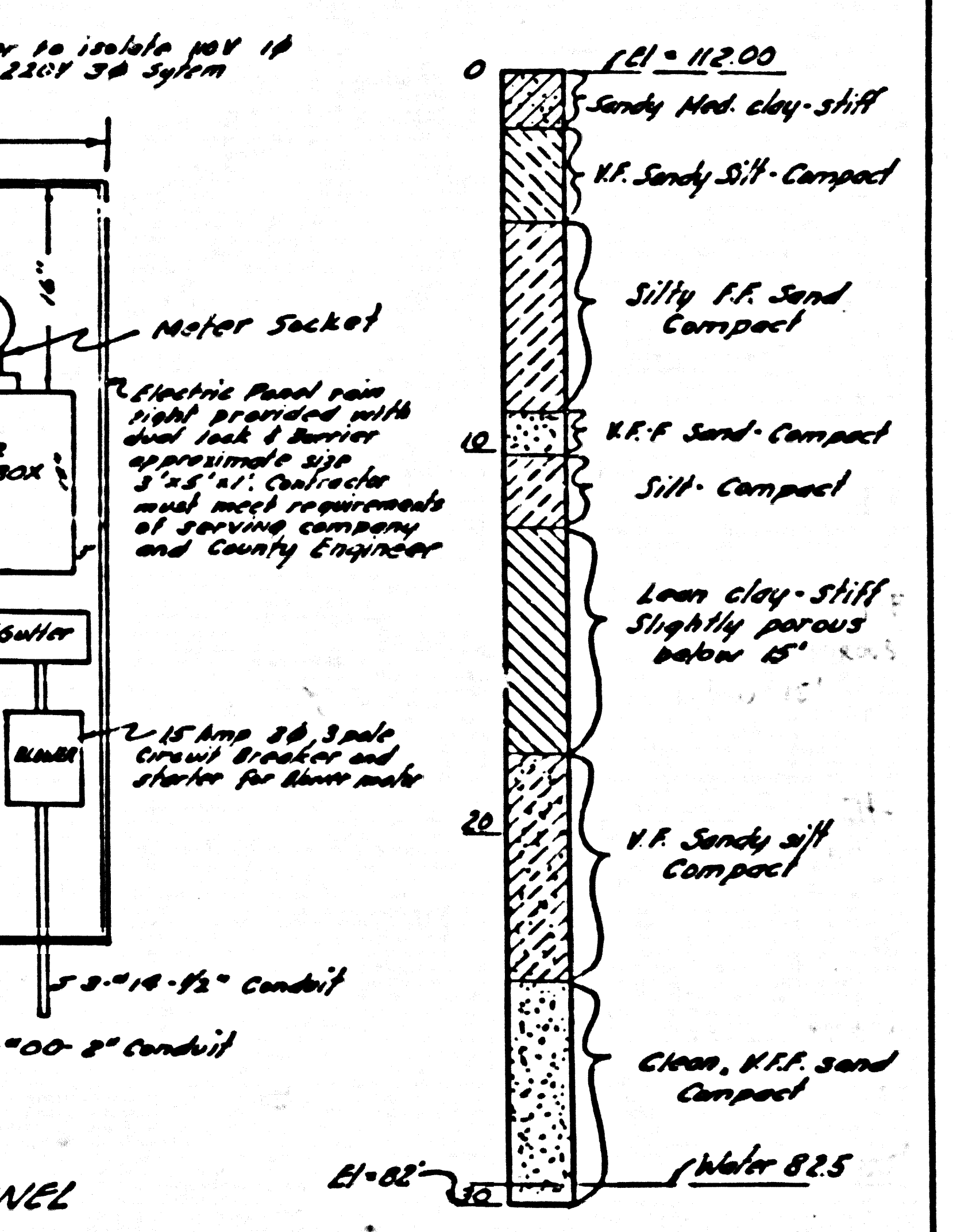
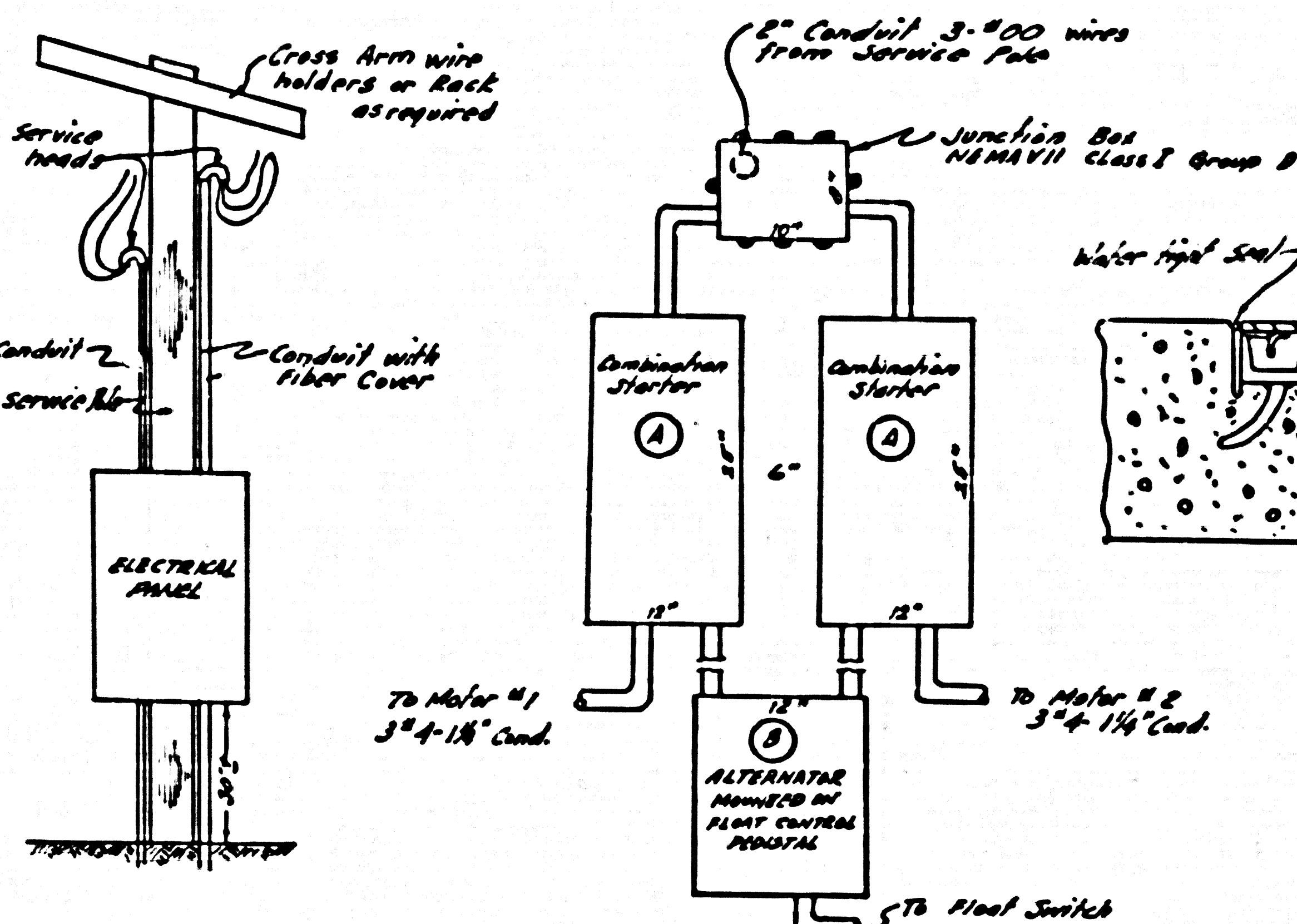
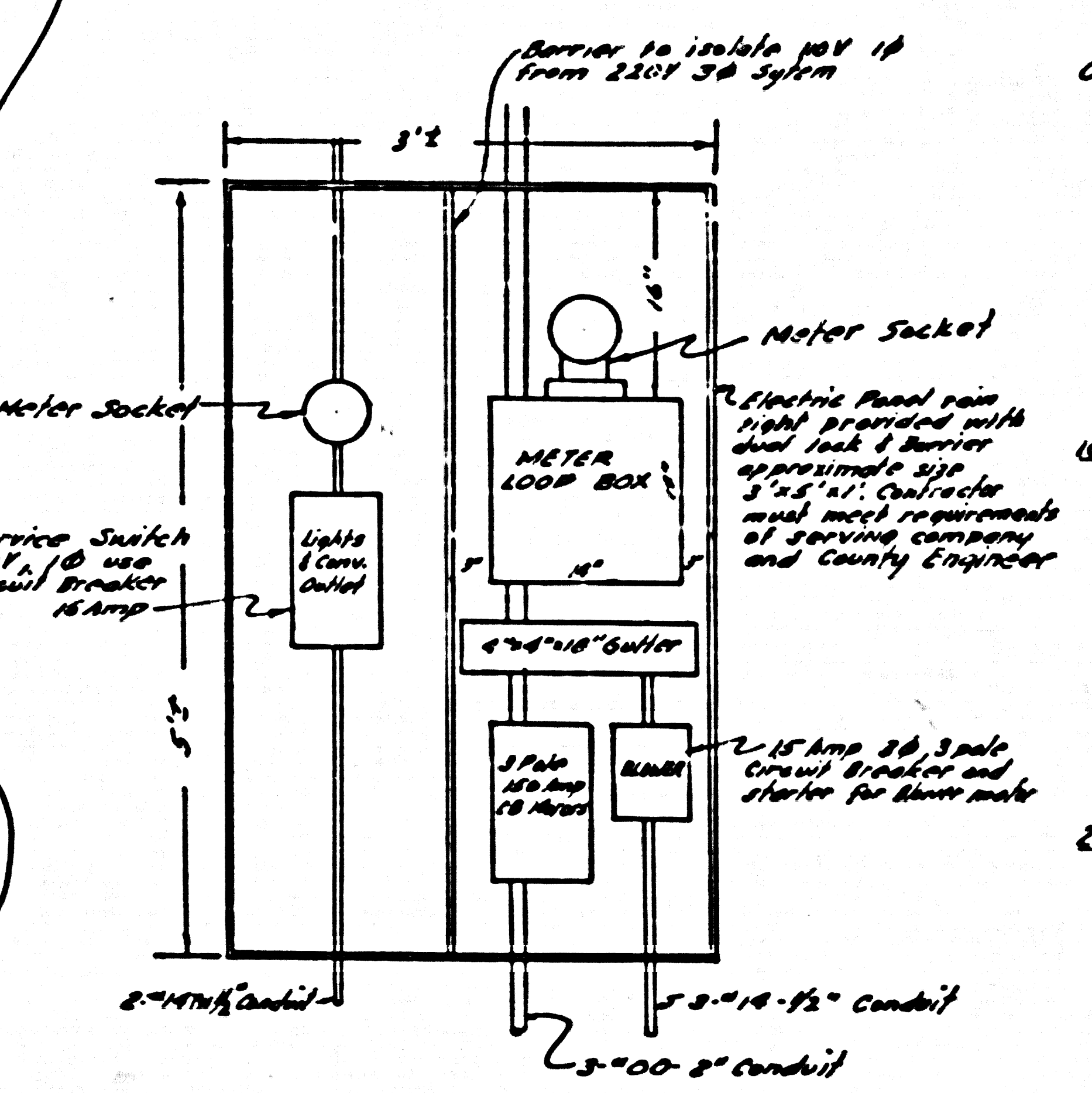
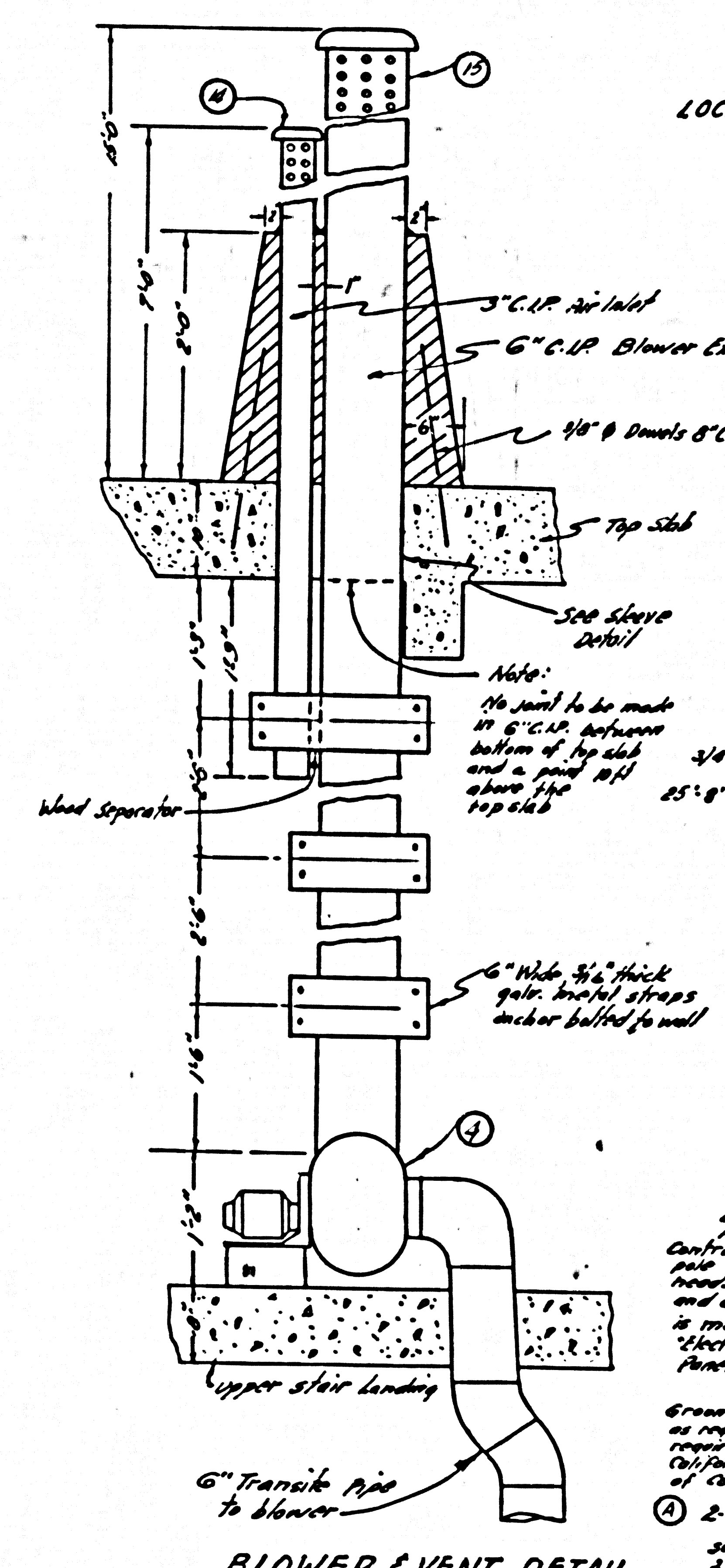
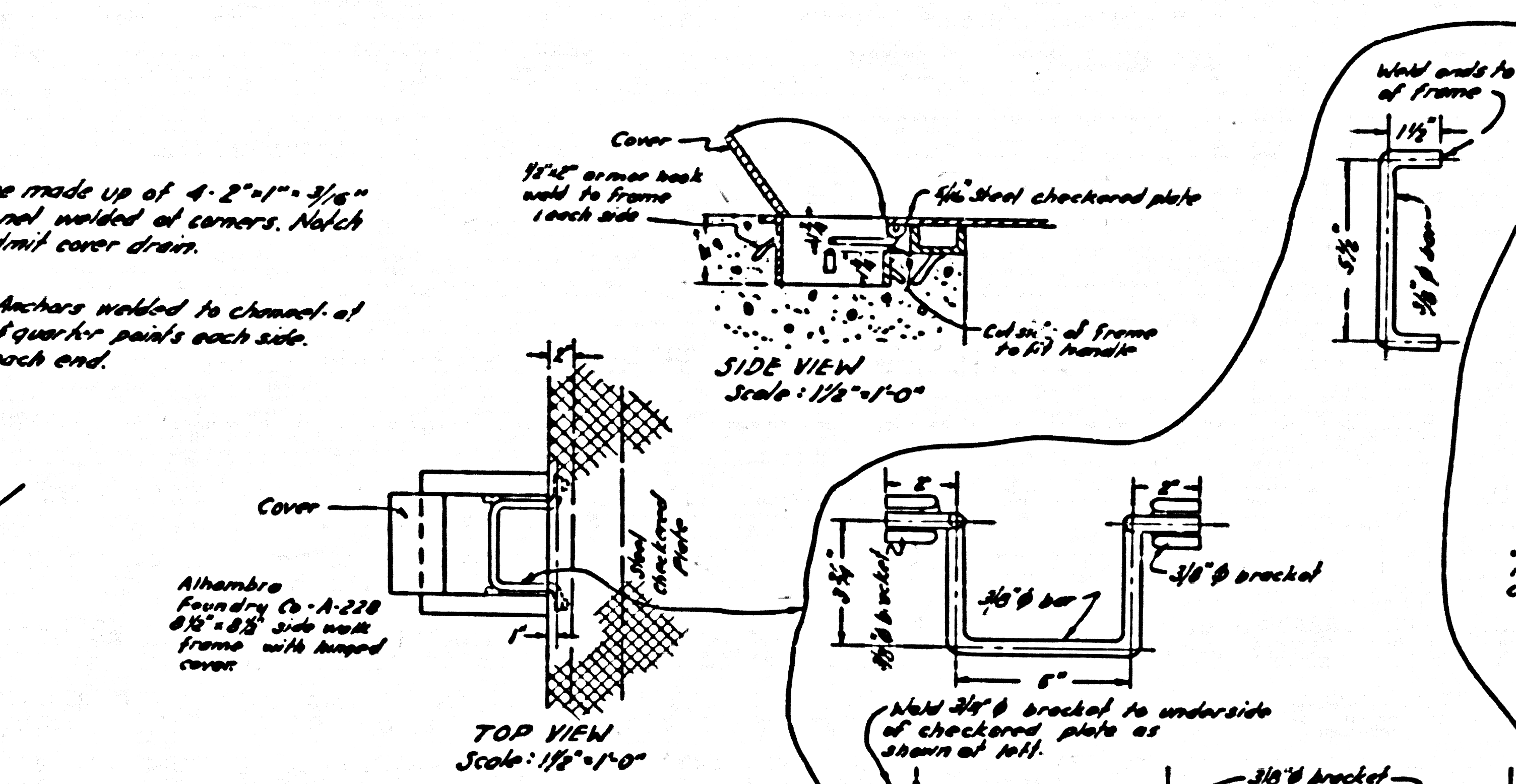
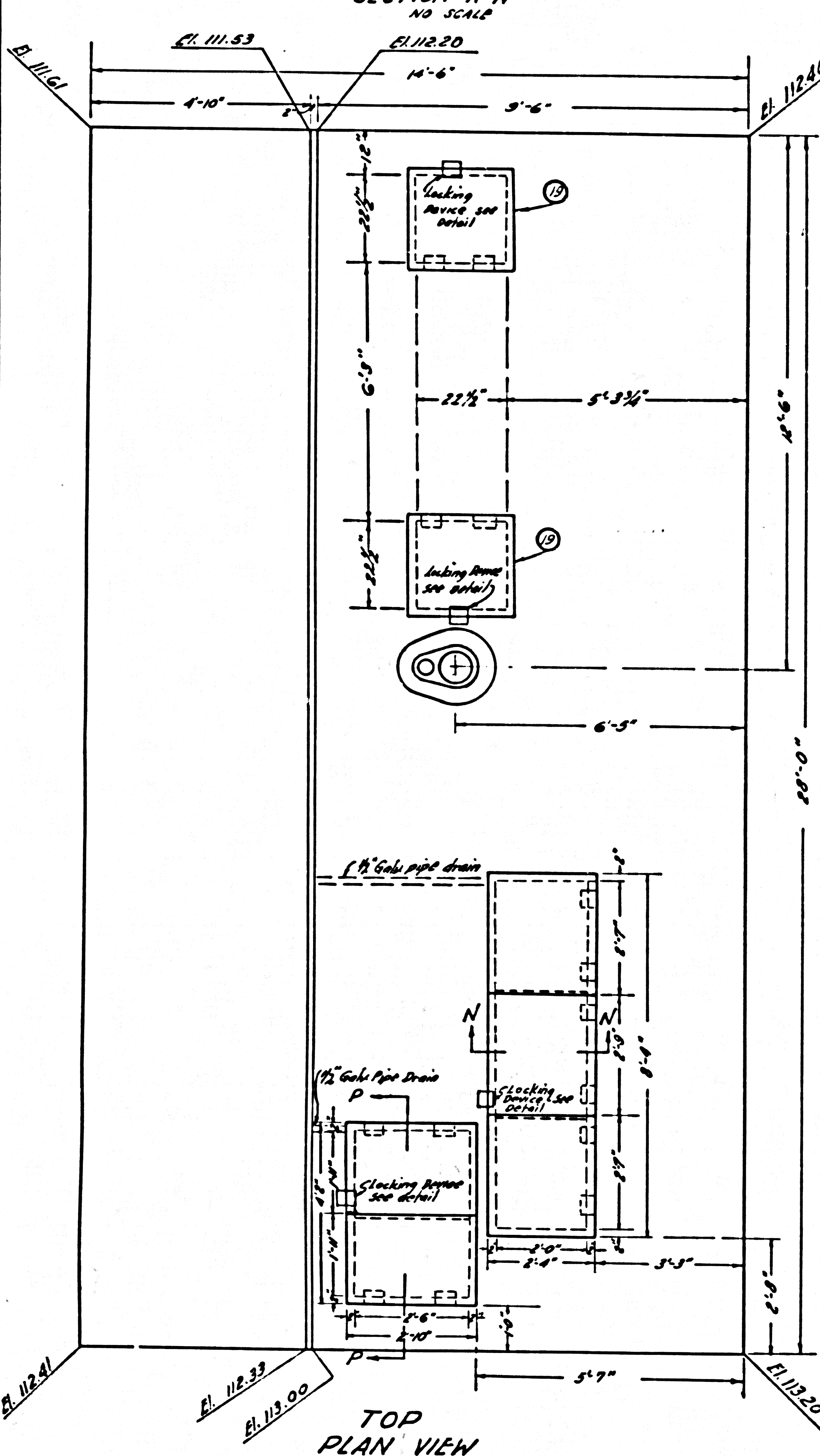
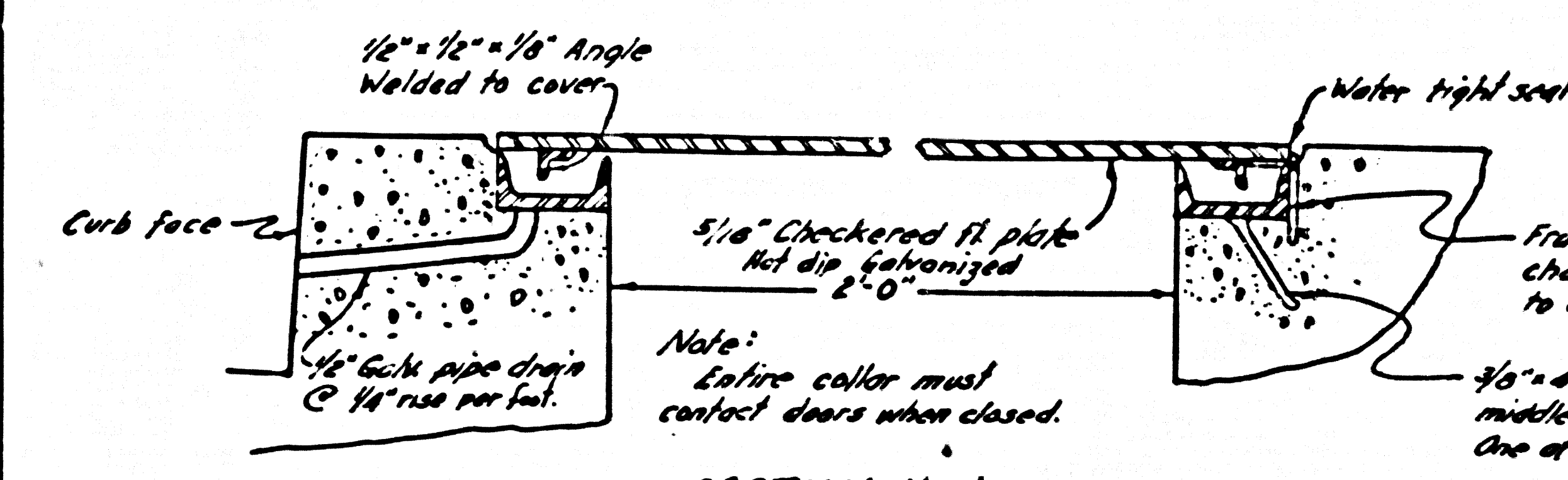
RELOCATION OF SEWERS IN BROADWAY  
Sta. 23+17.00 to Sta. 25+36.35  
CHECKED BY: [Signature]

PC.3876









**STARTING SERVICE - 110V 15 AMP 1 Ø**  
**POWER SERVICE - 220V 150 AMP 3 Ø**  
 Contractor will supply service and meter panel including all necessary conduit, service trough, wire, fiber covers, safety socket boxes, and all other items as required. Reference is made to Southern California Edison Co. Electrical Service Requirements. Panel Box to be mounted on east side of Pole.

**General Specifications:**  
 Grounding - exposed metal parts of meters and control equipment shall be permanently grounded as required in Article 7, Electrical Safety Orders. Wiring within pump station shall conform to that required for Class 1 Division 2 Hazardous Locations as defined in Article 52, State of California Electrical Safety Orders, February 1952. All electrical work shall meet requirements of County of Los Angeles Electrical Ordinance, Ordinance 8252.

(A) 2- Combination Magnetic Starters, line voltage type with hand-off auto switch suitable for use in hazardous locations NEMA VII class 1 Group D Enclosure. 220 volts 3 phase 1Ø K.P. (NEMA size 3 starter). 3Ø one over current protection, TRIP to be determined by motor current nameplate data square D class 8539 type DR3 or equal.

(B) 1- Automatic Alternator, for use with above starters and Automatic Control Co. 58-2 Fuel Control. NEMA VII class 1 Group D Enclosure. Square D class 9039 or Automatic Control Co.

**PRIVATE CONTRACT NO 3876**  
**CONSTRUCTION PLANS FOR**  
**SEWAGE PUMP STATION & FORCE MAIN**  
**TO SERVE**  
**TRACT NO 20853**  
**SHEET 5 OF 10 SHEETS**  
 Scale 1/2"=1'-0" except as noted MAY 1956  
**COUNTY OF LOS ANGELES**  
**JOHN A. LAMBIE**  
 COUNTY ENGINEER  
 PREPARED IN THE OFFICES OF  
**HANNER ENGINEERING CO.**  
 1111 Broadway, Los Angeles, Cal. P.E. 3940  
 APPROVED BY: *[Signature]*  
 JONATHAN ENGINEER  
 APPROVED BY: *[Signature]*  
 A.M. PANIN CHIEF ENGINEER  
 Office Engineer  
 CHECKED BY: *[Signature]*  
 Office of County Engineer - Reg. GEN. 1-10-56  
 Office of County Engineer - Reg. GEN. 1-10-56

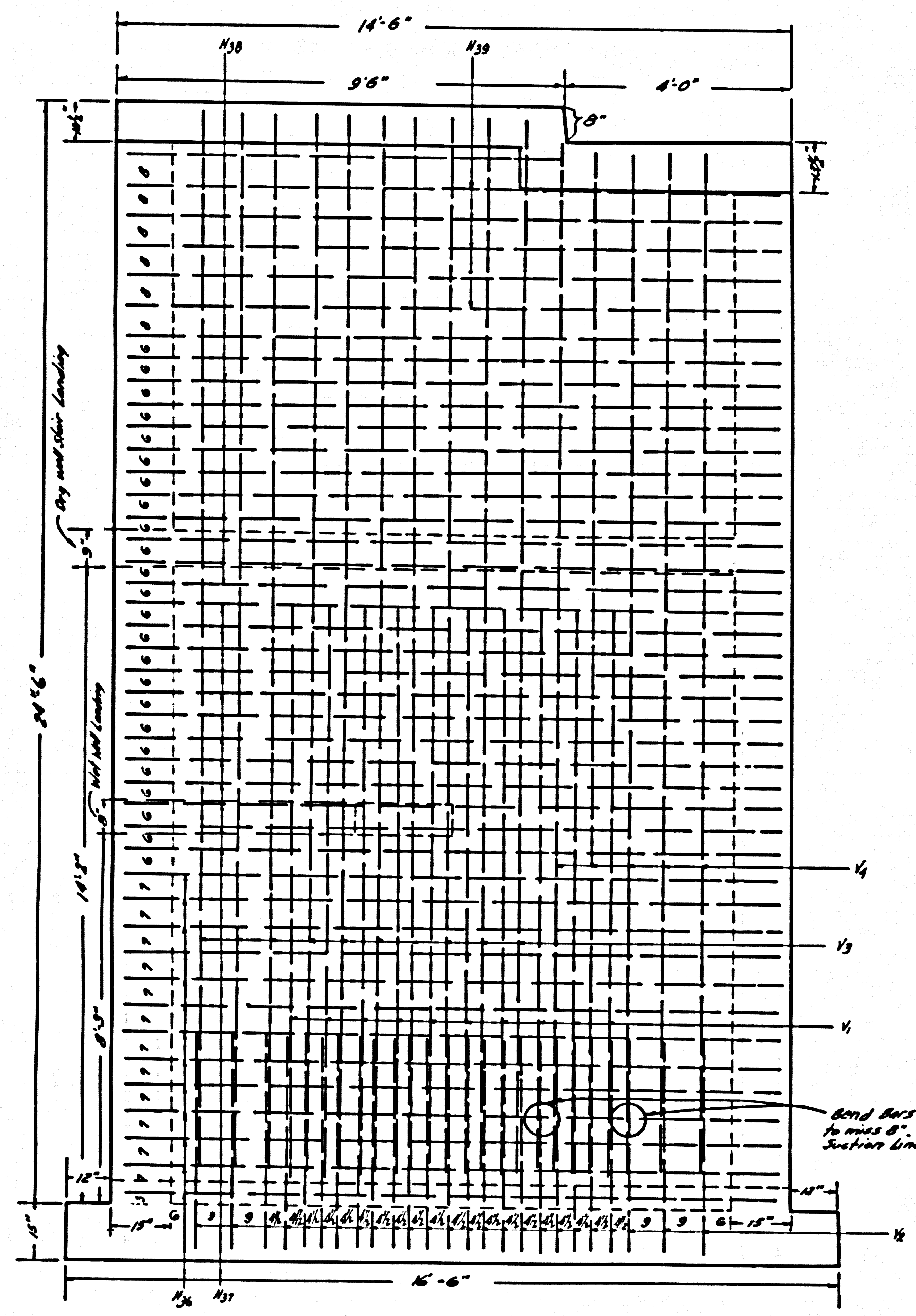




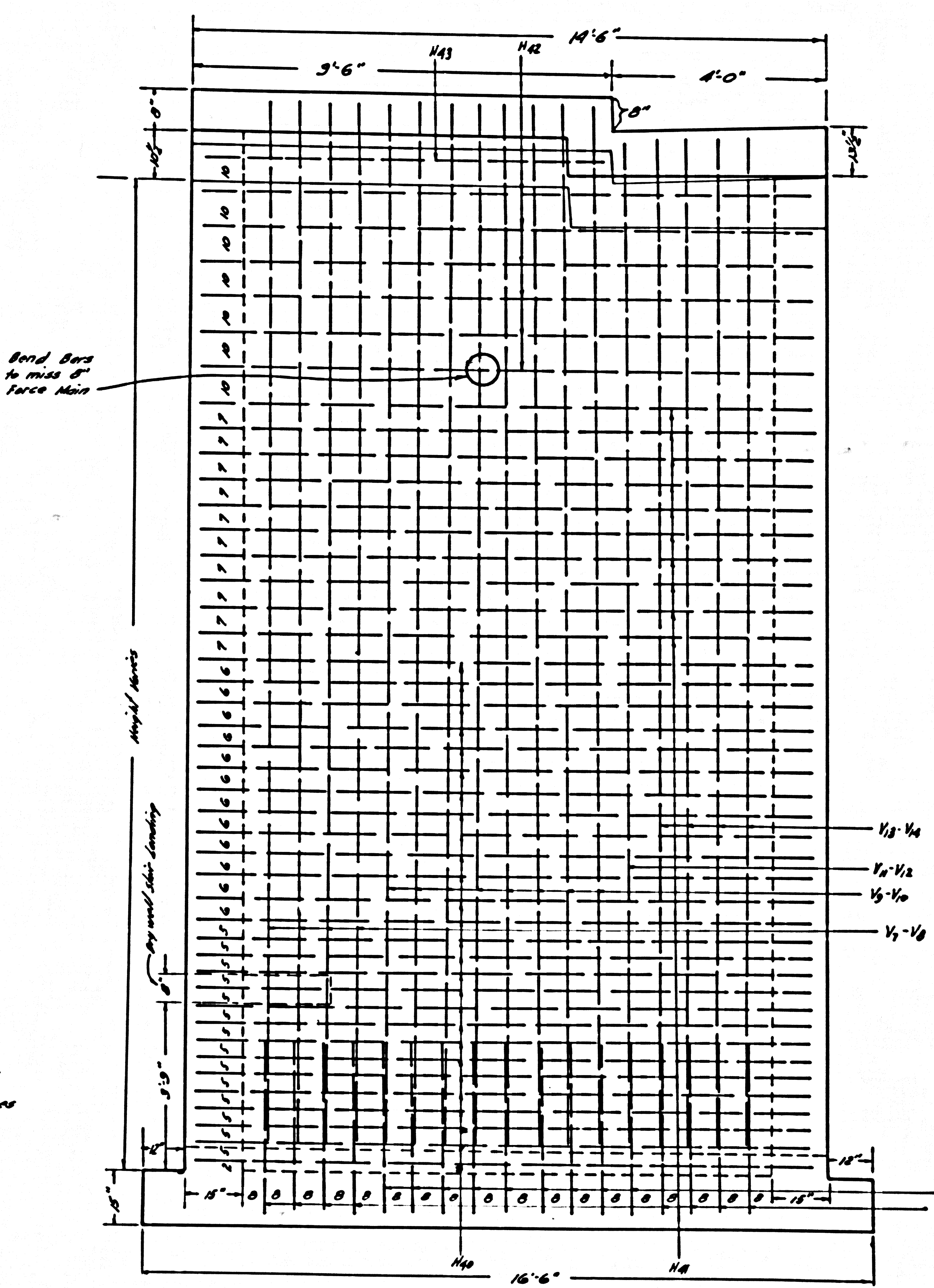




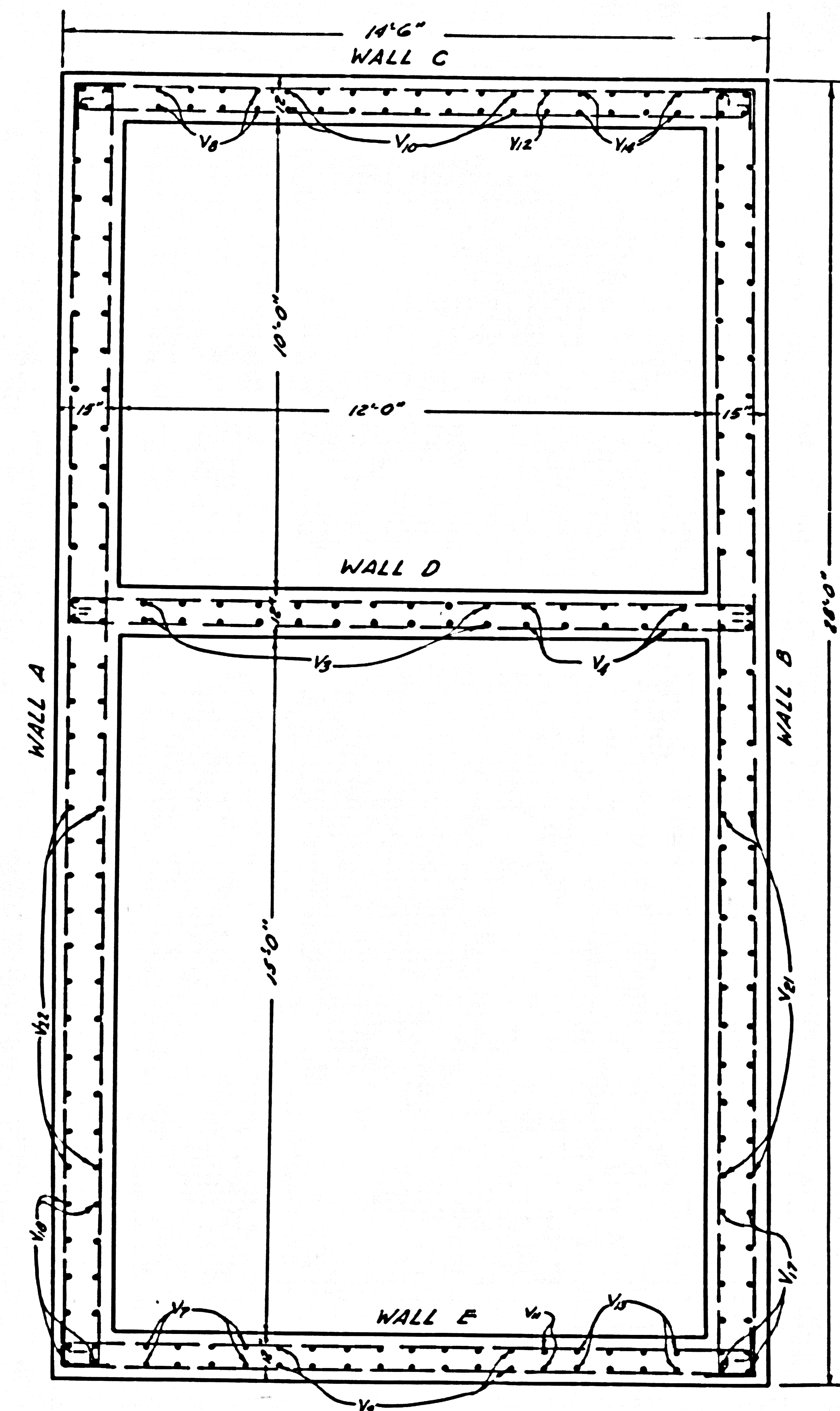




WALL D  
REINF. DETAIL  
Scale: 1/2" = 1'-0"



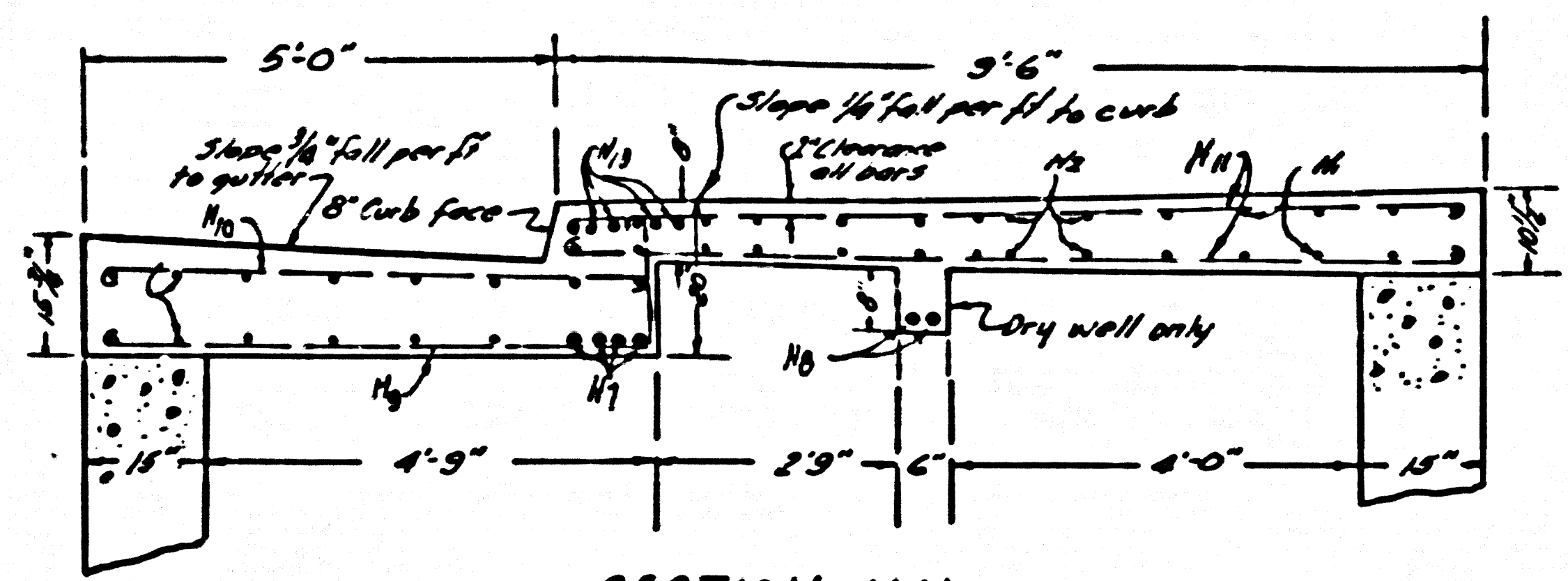
WALLS C & E  
REINF. DETAILS  
Scale: 1/2" = 1'-0"



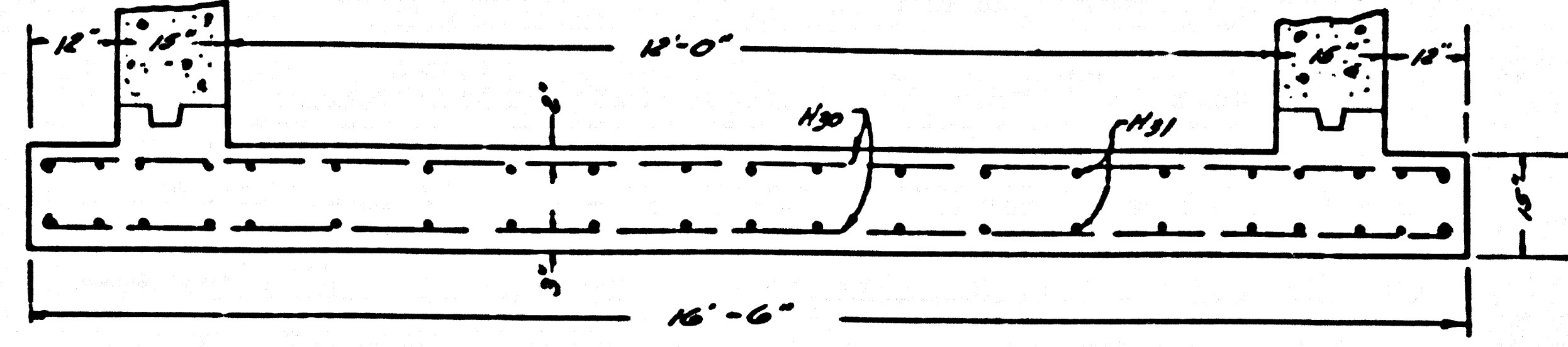
SECTION A-A  
Scale: 1/2" = 1'-0"

PRIVATE CONTRACT N° 3876  
CONSTRUCTION PLANS FOR  
SEWAGE PUMP STATION & FORCE MAIN  
TO SERVE  
TRACT N° 20853  
SHEET 0 OF 10 SHEETS  
Scale 1/2" = 1'-0" except as noted MAY 1956  
COUNTY OF LOS ANGELES  
JOHN A. LANSIE COUNTY ENGINEER  
PREPARED IN THE OFFICES OF  
HAMNER ENGINEERING CO.  
APPROVED BY: *[Signature]* RE 3040  
Sanitation Engineer  
APPROVED BY: *[Signature]* CHIEF ENGINEER  
By: *[Signature]* OFFICE ENGINEER  
CHECKED BY: *[Signature]* 7-20-56  
Office of County Engineer, Dep. C.E.N. 2206

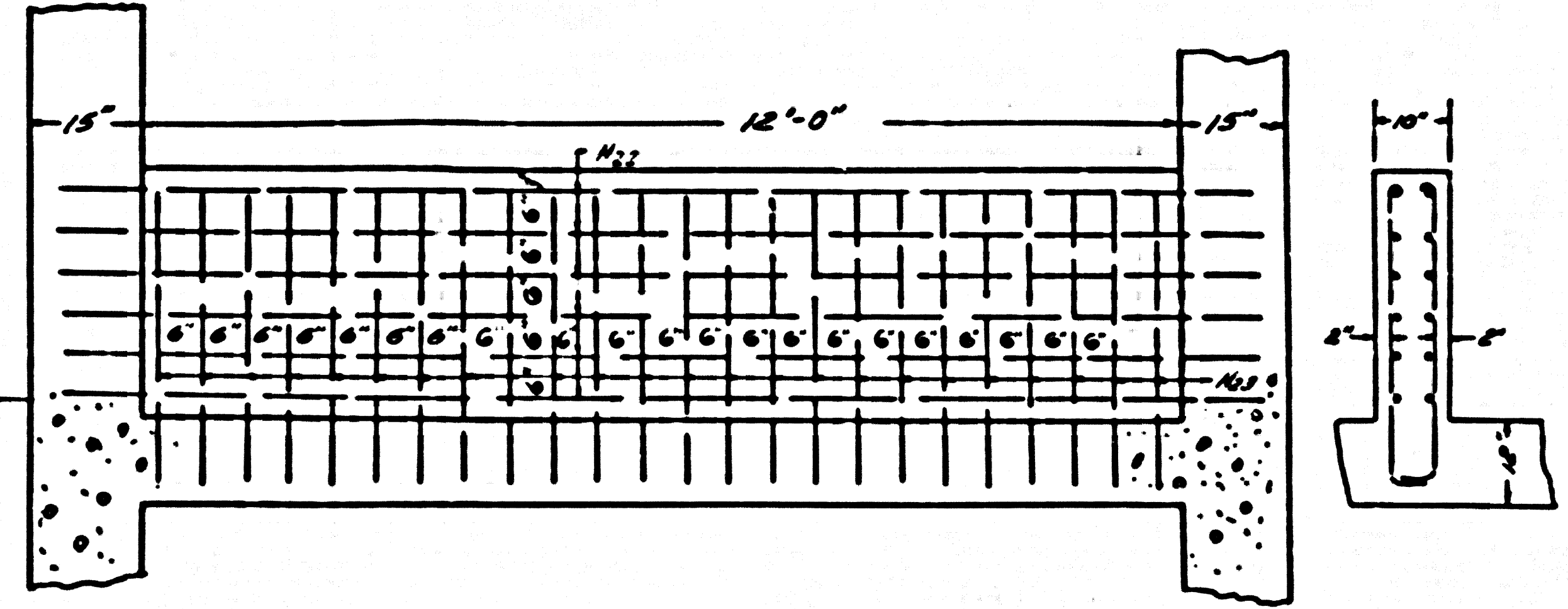




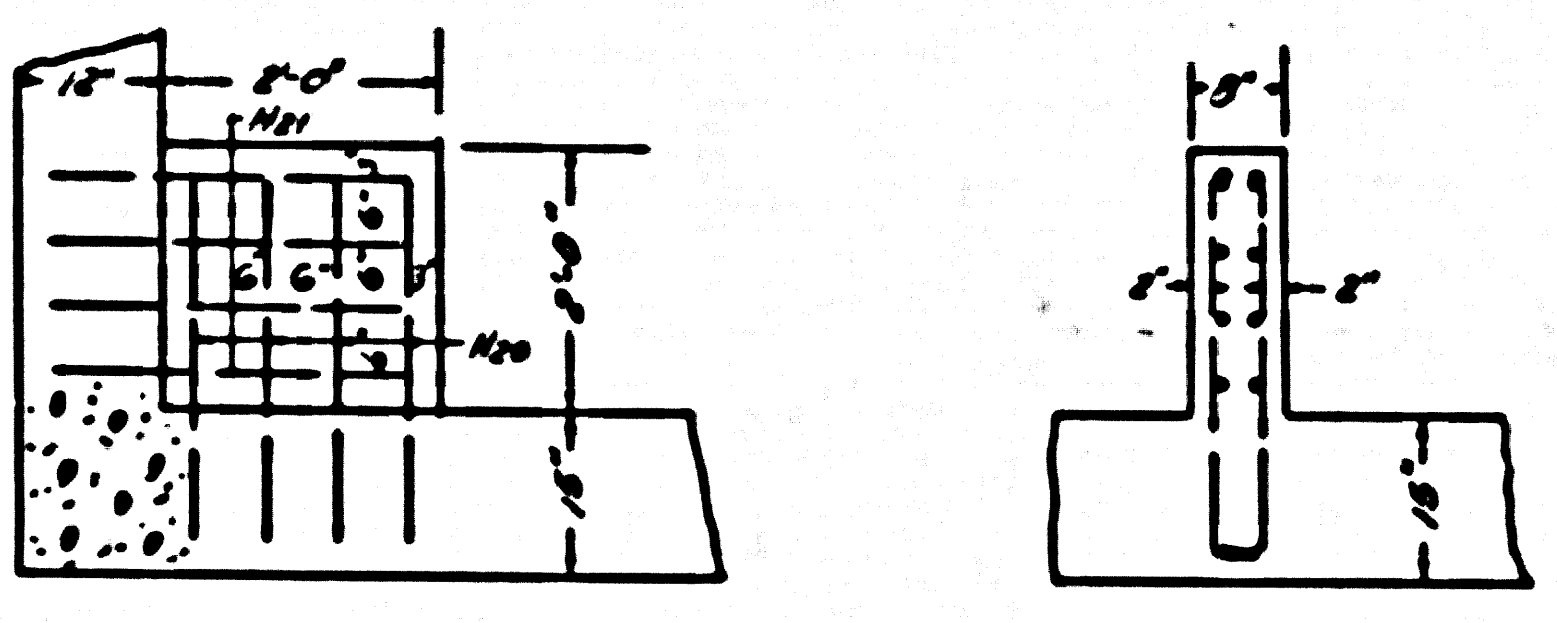
SECTION N-N



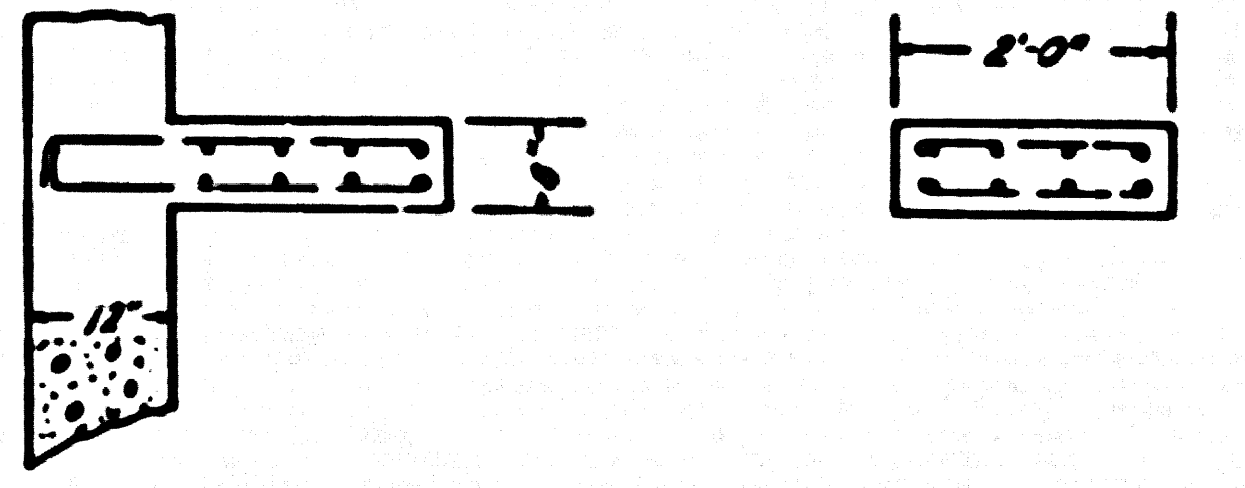
SECTION M-M



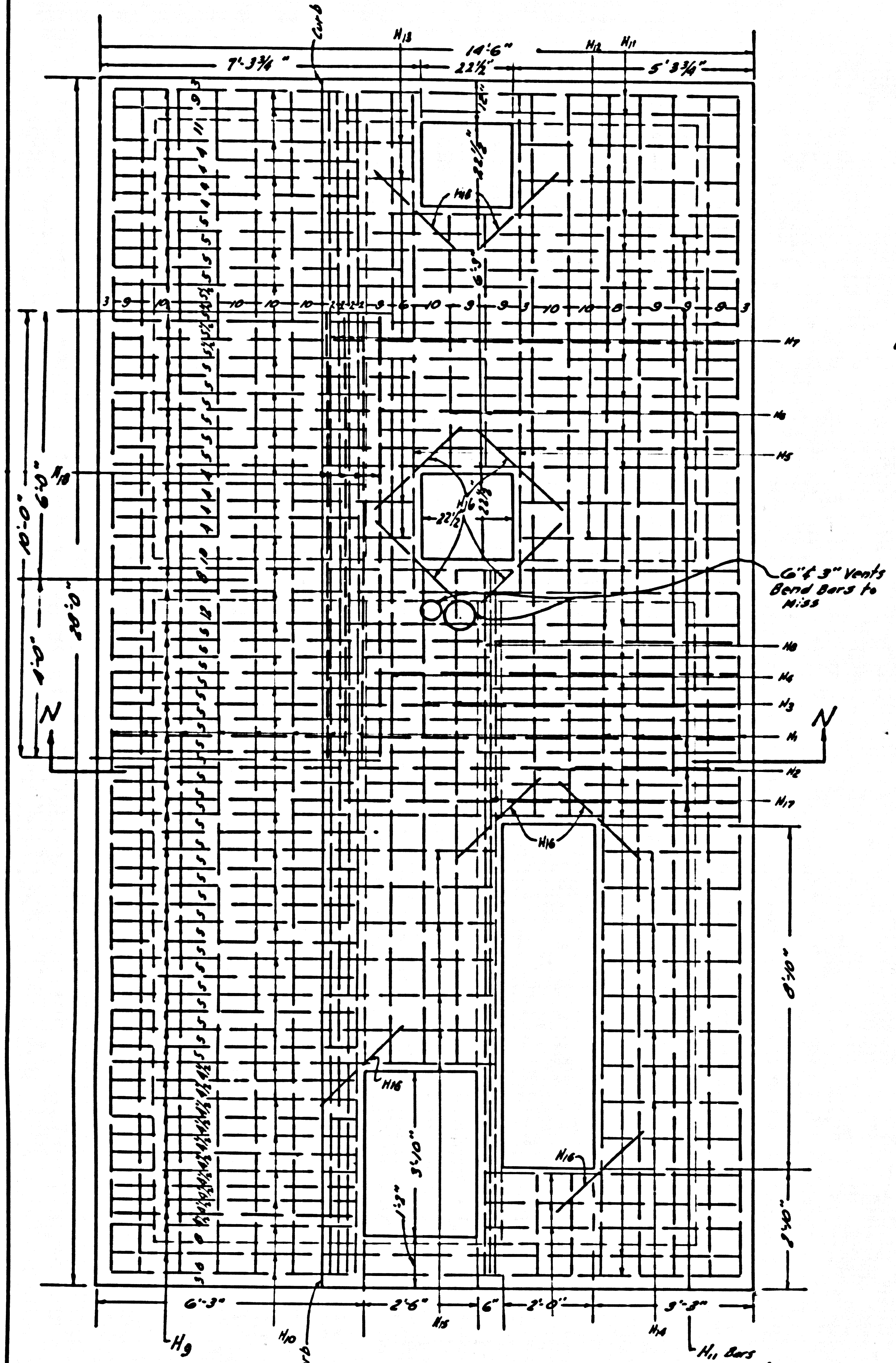
UPPER STAIRWAY LANDING  
Scale: 1/8" = 1'-0"



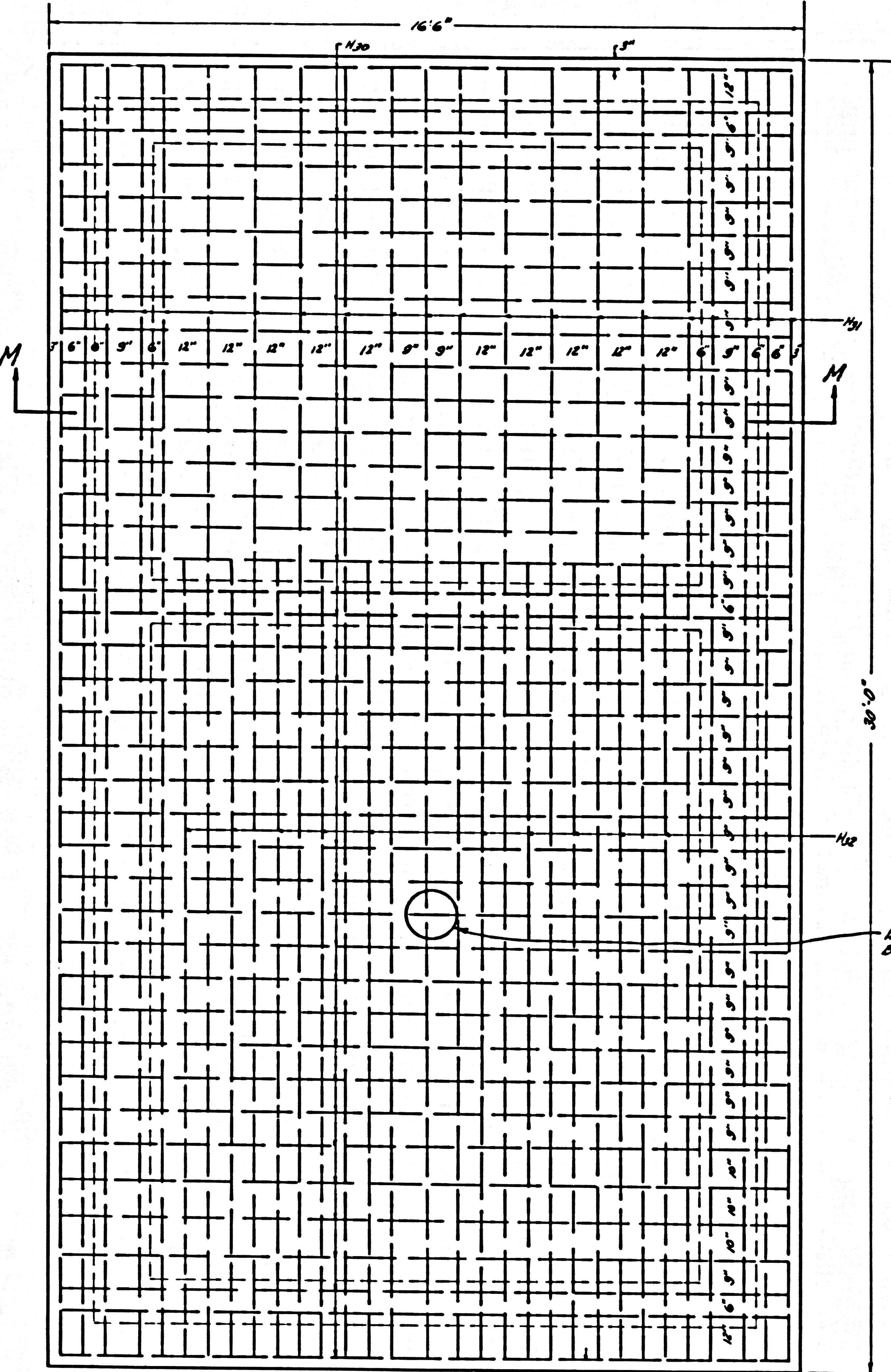
LOWER STAIRWAY LANDING  
Scale: 1/8" = 1'-0"



WET WELL LANDING  
Scale: 1/8" = 1'-0"



TOP SLAB  
Scale: 1/8" = 1'-0"

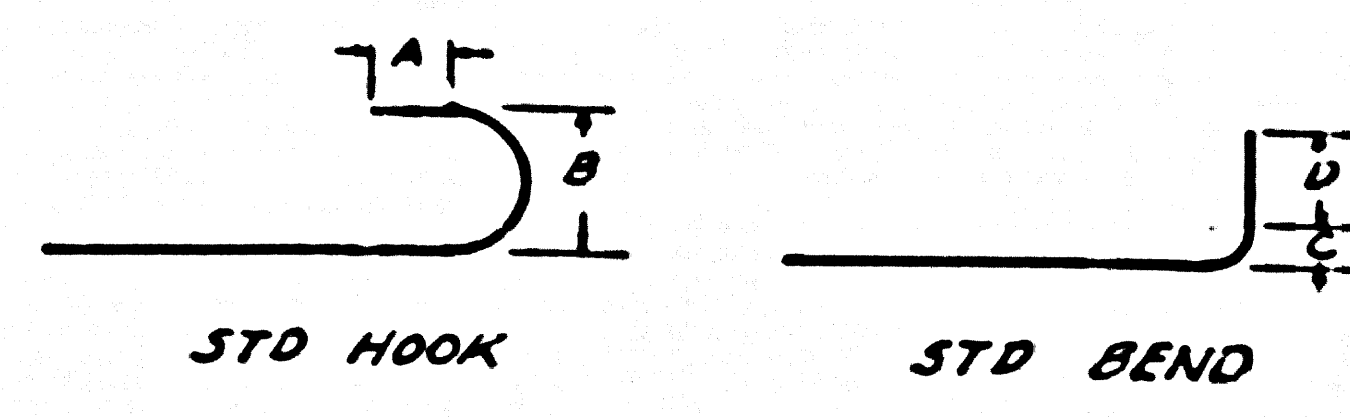


BOTTOM SLAB  
Scale: 1/8" = 1'-0"

Revision Approved: *[Signature]* 4-9-56  
Office of County Engineer Reg. C.E.N. 3462

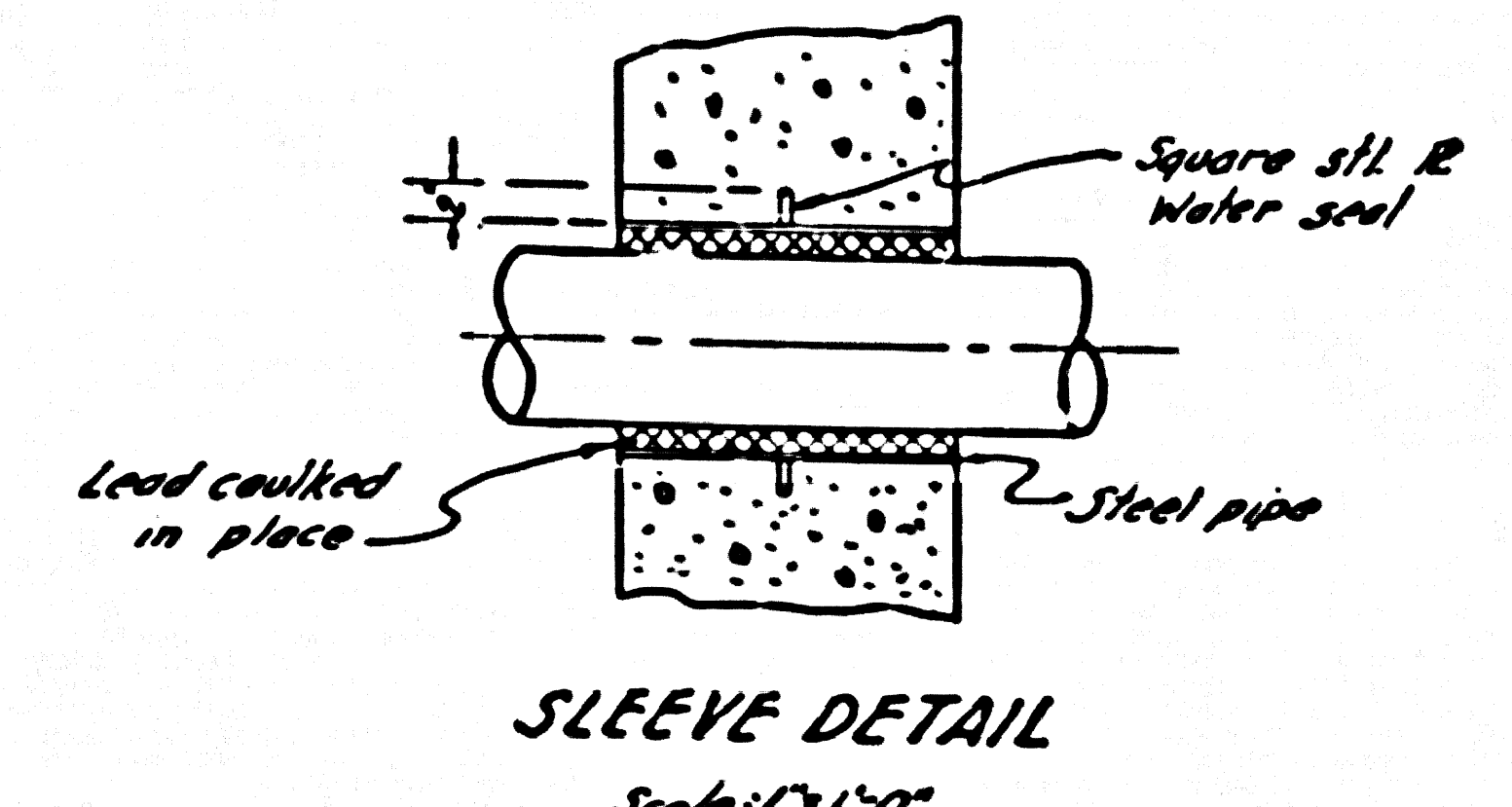
PRIVATE CONTRACT N° 3876  
CONSTRUCTION PLANS FOR  
SEWAGE PUMP STATION & FORCE MAIN  
TO SERVE  
TRACT N° 20853  
SHEET 9 OF 10 SHEETS  
Scale 1/8" = 1'-0" Except as noted MAY 1956  
COUNTY OF LOS ANGELES  
JOHN A. LAMBIE COUNTY ENGINEER  
PREPARED IN THE OFFICES OF  
HAMNER ENGINEERING CO.  
APPROVED BY: *[Signature]* P.E. 22940  
Sanitation Engineer  
By: *[Signature]* COUNTY ENGINEER ca. San. Dist. N° 8  
Office Engineer  
CHECKED BY: *[Signature]* 7-20-56  
Office of County Engineer Reg. C.E.N. 3462



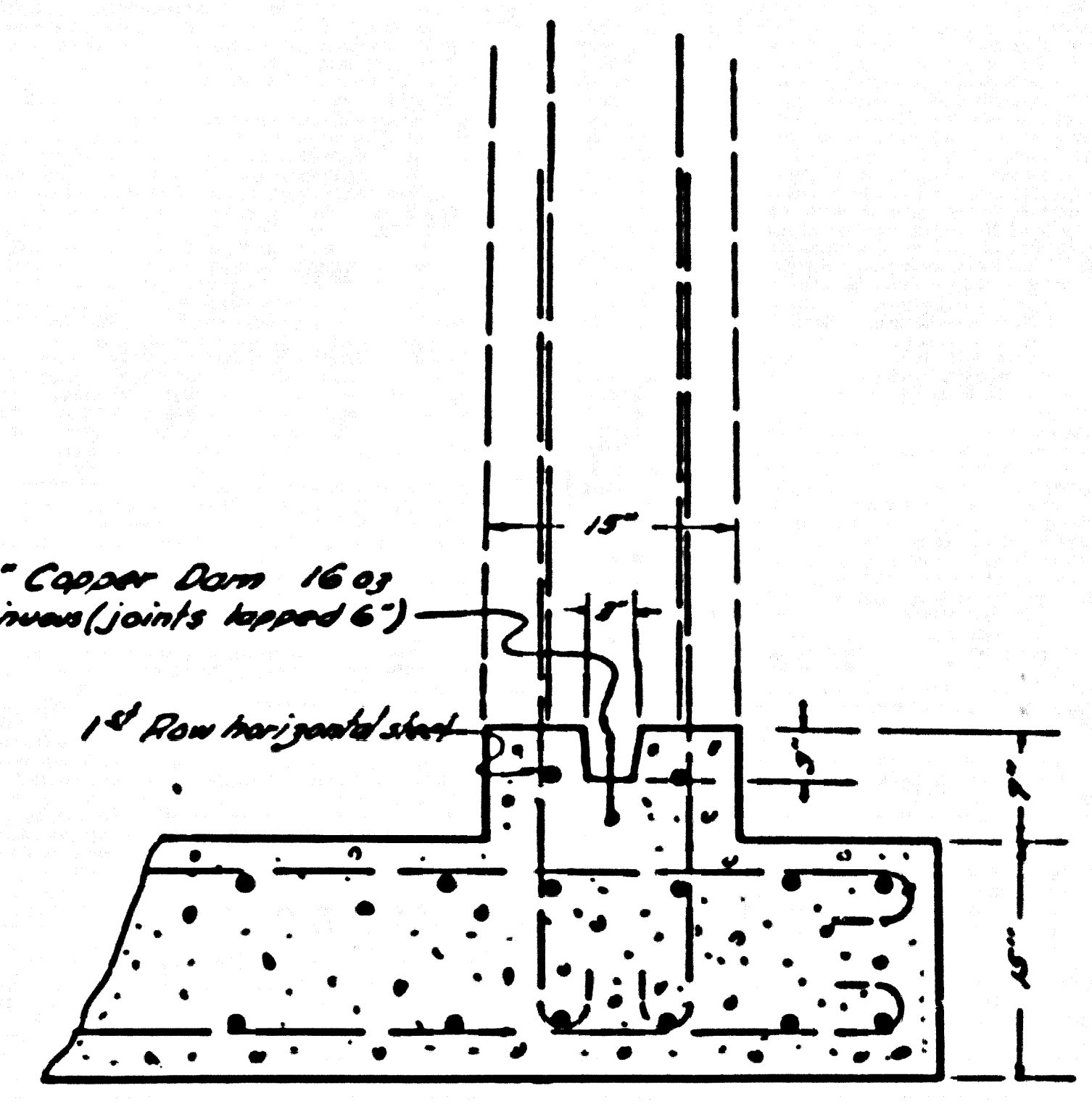
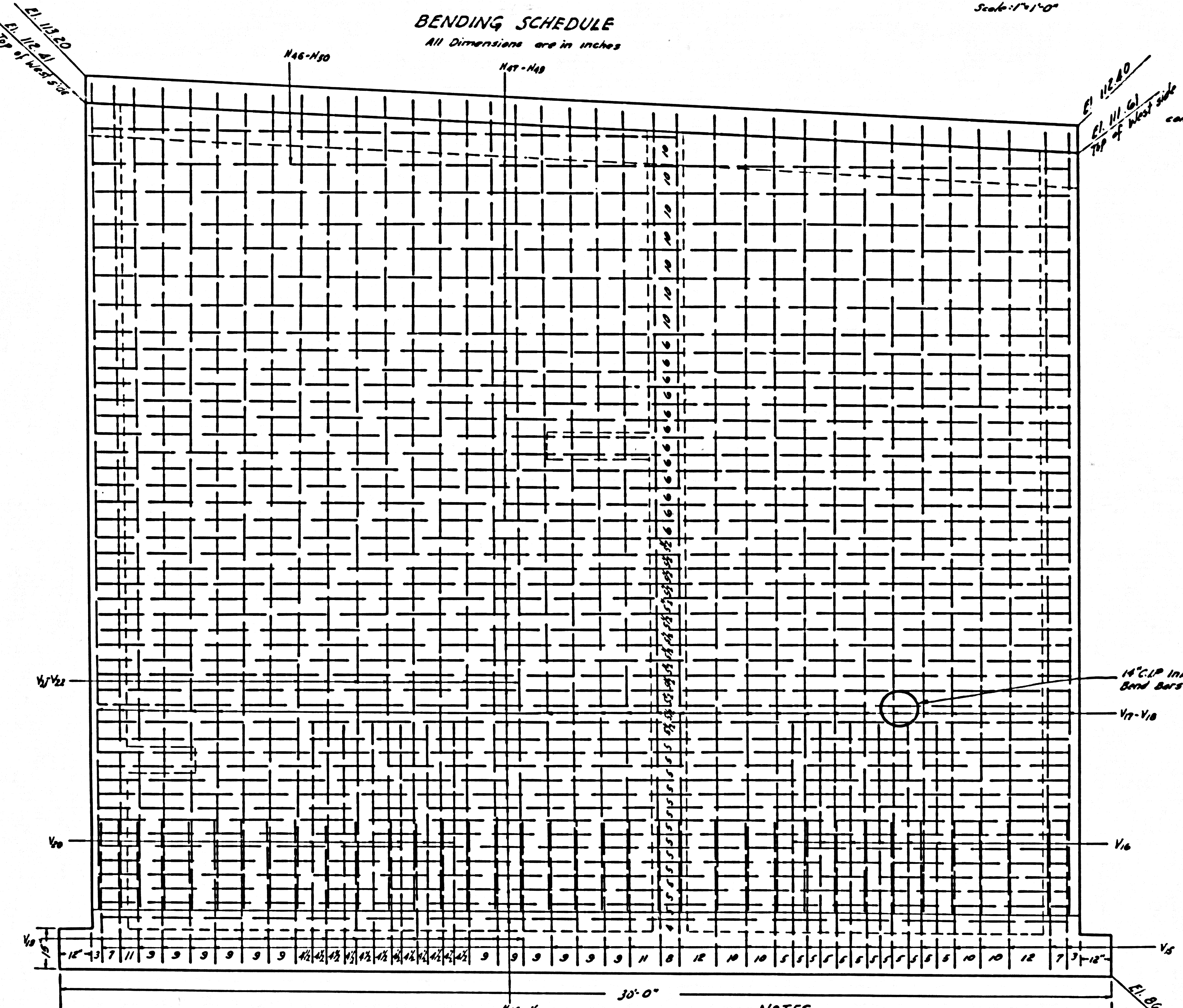


	A	B	C	D
3/8"	1 1/2	3	1 1/2	4 1/2
1/2"	2	4	2	6
5/8"	2 1/2	5	2 1/2	7 1/2
3/4"	3	6	3	9
7/8"	3 1/2	7	3 1/2	10 1/2
1"	4	8	4	12

**BENDING SCHEDULE**  
All Dimensions are in inches



**SLEEVE DETAIL**  
Scale: 1"=1'-0"

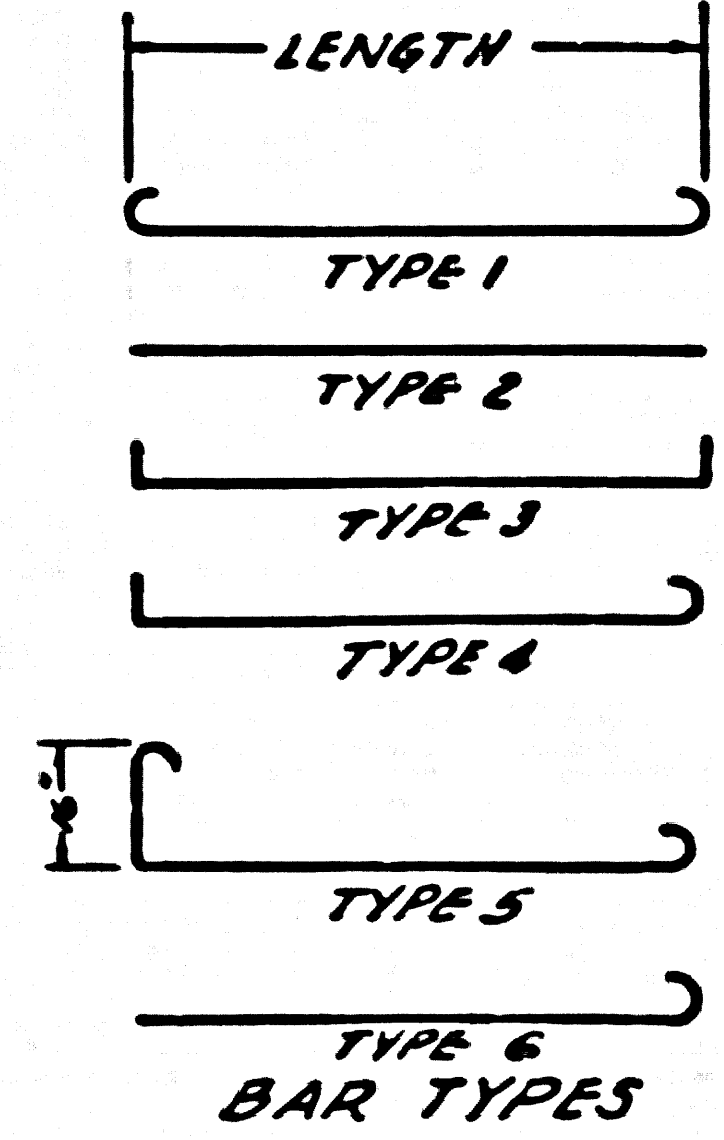


**CONSTRUCTION JOINT**  
Scale: 1"=1'-0"

Var.	Type	NO.	Size	Length	Location
16	6	26	1/2"	7'-5"	Walls A & B
17	2	30	5/8"	24'-0"	DO
18	2	30	5/8"	24'-0"	DO
19	6	44	3/4"	4'-0"	DO
20	6	24	5/8"	7'-5"	DO
21	2	22	3/4"	24'-0"	DO
22	2	22	3/4"	24'-0"	DO

Var.	Type	NO.	Size	Length	Location
38	1	24	5/8"	14'-0"	DO
39	1	10	1/2"	18'-0"	DO
40	1	108	3/8"	14'-0"	Walls C & E
41	1	40	3/8"	14'-0"	DO
42	1	22	5/8"	14'-0"	DO
43	1	2	1/2"	5'-0"	DO
44	3	54	1'-0"	27'-6"	Walls A & B
46	3	2	3/8"	16'-6"	DO
47	3	35	3/8"	27'-6"	DO
48	1	54	1'-0"	27'-6"	DO
49	1	35	3/8"	27'-6"	DO
50	1	2	3/8"	16'-6"	DO
51	2	20	1/2"	15'-0"	Wall D
52	6	50	1/2"	4'-0"	DO
53	2	20	1/2"	23'-0"	DO
54	2	10	1/2"	23'-0"	DO
55	6	32	1/2"	4'-0"	Walls C & E
56	6	32	1/2"	4'-0"	DO
57	2	8	1/2"	23'-0"	DO
58	2	8	1/2"	23'-0"	DO
59	2	16	3/4"	23'-0"	DO
60	2	16	3/4"	23'-0"	DO
61	2	2	3/4"	23'-0"	DO
62	2	2	3/4"	23'-0"	DO
63	2	8	1/2"	23'-0"	DO
64	2	8	1/2"	23'-0"	DO
65	6	100	3/8"	8'-0"	WALLS A & B

Revisions Approved:  
By J.S. Kahan 11-8-56  
Office of County Engineer, Reg. C.E. No. 7860



**BAR TYPES**

- NOTES**
- Use deformed bars.
  - Ultimate Concrete Stress (28 days)  $f'_c = 3000$  psi.
  - Allowable Steel Stress,  $f_s = 20,000$  psi.
  - All bar laps to be 40 diameters minimum, unless otherwise indicated on plans.
  - All steel reinforcement to have a minimum cover of 2".

**WALLS A & B REINF. DETAIL**  
Scale: 1/2"=1'-0"

PRIVATE CONTRACT NO. 3876  
CONSTRUCTION PLANS FOR  
SEWAGE PUMP STATION & FORCE MAIN  
TO SERVE  
TRACT NO. 20853  
SHEET 10 OF 10 SHEETS  
Scale 1/2"=1'-0" Except as noted MAY 1956  
COUNTY OF LOS ANGELES  
JOHN A. LAMBLE COUNTY ENGINEER  
PREPARED IN THE OFFICES OF  
HAMNER ENGINEERING CO.  
APPROVED BY: [Signature] R.E. 3040  
Qualification Engineer  
APPROVED, ADMINISTRATIVE ENGINEER  
By: [Signature] Ca. San. Div. No. 8  
Checked By: [Signature] 7-10-56  
Office of County Engineer, Reg. C.E. No. 3406