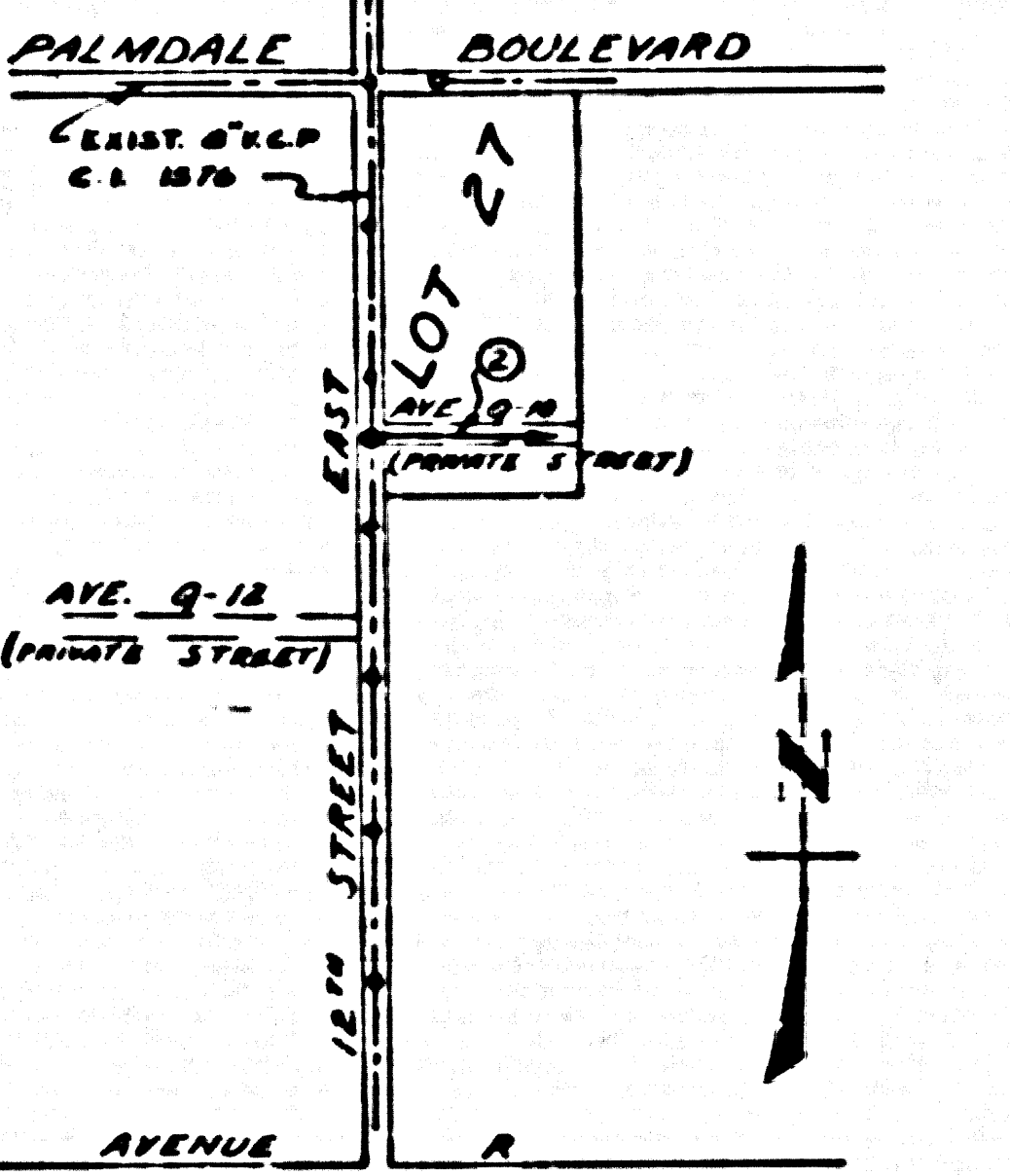


BM 18-10 Elev. 2650.688 C.S.F.B. 1892 Pg. 15
 & Inter. Ave. R & 10th Street E.
 Top C.S. Mon. in wall - 30" down

NOTE:
 11. THE PRIVATE ENGINEER IS TO FURNISH THE HOUSE LATERAL DEPTH AT THE EDGE OF R/W LINE BELOW SURFACE OVER SEWER FOR EACH HOUSE LATERAL, ON THE GRADE SHEET.

- NOTES
1. PROFILE STAKES ON 1/4" PROPERTY LINE OR PROPERTY LINES PRODUCED AT RIGHT ANGLES TO THE SEWER LINE AT THE CENTER LINE OF EACH MANHOLE.
 2. NO REPRESENTATIVE OF THE COUNTY ENGINEER WILL SURVEY OR LAYOUT ANY PORTION OF THE WORK.
 3. THE OWNER OR HIS AUTHORIZED REPRESENTATIVE SHALL FURNISH THE COUNTY ENGINEER WITH GRADE SHEETS AND STATIONING FOR ALL HOUSE LATERALS AND T BRANCHES AND SHALL FURNISH STAKES FOR THEM AT THEIR PROPOSED LOCATIONS WITH STATIONING PLANNED THEREON. ANY CHANGE IN LOCATION SHALL BE REQUESTED BY THE OWNER OR HIS REPRESENTATIVE.
 4. NO ALTERATIONS SHALL BE MADE IN THESE PLANS WITHOUT THE APPROVAL OF THE COUNTY ENGINEER.
 5. USE STANDARD MANHOLE FRAMES AND COVERS, S.A. 117, EXCEPT AS NOTED.
 6. USE STANDARD STRENGTH PIPE EXCEPT AS NOTED.
 7. USE CEMENT MORTAR FOR ALL VITRIFIED CLAY PIPE JOINTS.
 8. RESURFACE ALL TRENCHES WITHIN PAVED AREA TO MEET L.A. COUNTY ROAD DEPT. OR CALIF. STATE HIGHWAY DEPT. REQUIREMENTS IN ACCORDANCE WITH PERMITS.
 9. ENCASE FOUR FEET OF SEWER AT POINTS OF INTERFERENCE WITH POLES, S.A. 119.
 10. HOUSE LATERALS TO BE CONSTRUCTED WITH INVERTS AT PROPERTY LINE. SEE BELOW GRADE OF E OF R/W EXCEPT AS NOTED.
 11. ALL STRUCTURES SHALL BE BRICK STRUCTURES, S.A. 104, EXCEPT AS NOTED.
 12. FOR ALLOWABLE LEAKAGE TEST USE FORMULA NO. _____ SPEC. SEC. 32.
 13. MANHOLES TOPS IN UNIMPROVED RIGHTS-OF-WAY TO BE LEVEL WITH FINISHED GRADE.
 14. SHALL ALL PIPE JOINTS WITH 4" CEMENT MORTAR THAT ARE WITHIN 20 FEET OF ALL PROPERTY LINES OR SANITARY SEWER R/W'S.

NO CHARGE FOR CONNECTIONS
 6-25-56



INDEX MAP P.C. 3881
 SCALE 1"=660'
 TRACT NO. 7682

dated 10-24-56 [Signature]

TO BE CONSTRUCTED IN AVENUE Q-10 (PRIVATE STREET) 23,566 (2)

PRIVATE CONTRACT NO. 3881
 W.S. 65

1 SHEET 2 PAGES
 SCALE: 1"=660' JAN. 19, 1956

PREPARED IN THE OFFICES OF SURVEY BY GANN

FOR LEGEND SEE PLAN NO. S-A-64

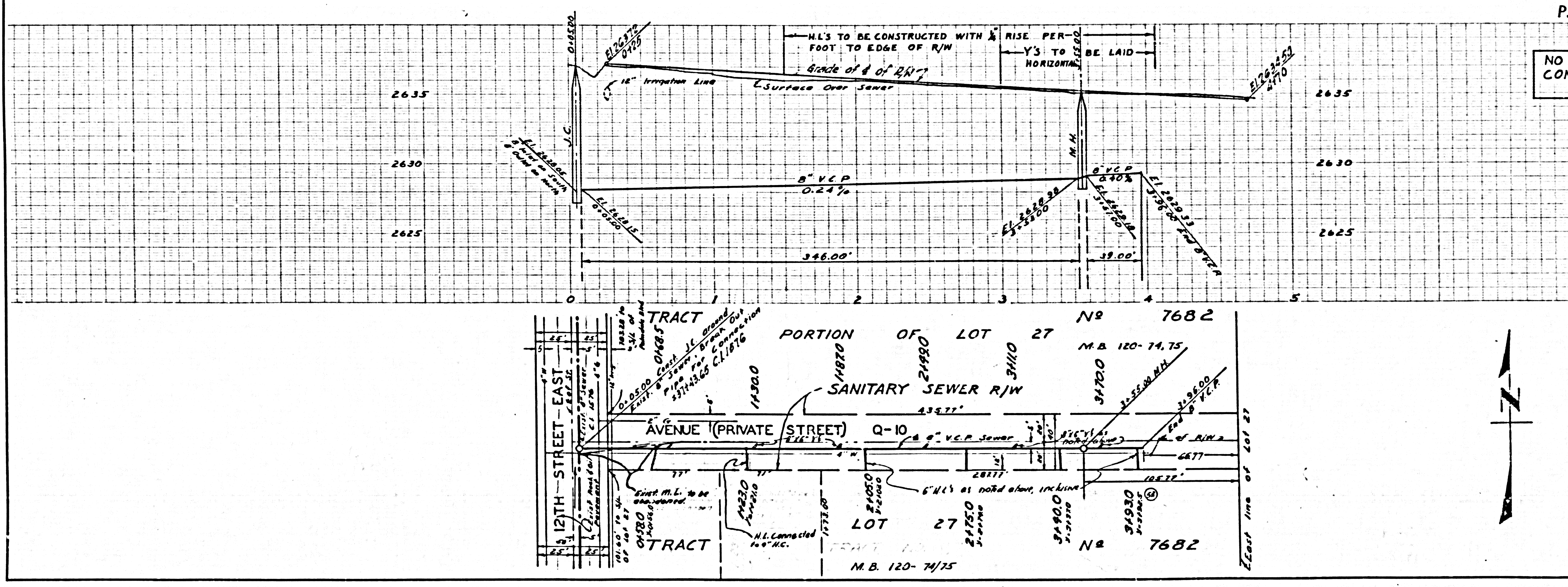
NOTE: GRADES TO WHICH THIS IMPROVEMENT IS TO BE CONSTRUCTED ARE SHOWN ON PLANS AND PROFILE GRADE POINTS FOR TOP OF CURBS, CENTER LINE OF STREETS, OR CENTER LINE OF ALLEYS ARE SHOWN BY CIRCLES ON PROFILES AT ALL POINTS BETWEEN BENCHMARK POINTS. THE GRADE SHALL BE ESTABLISHED SO AS TO CONFORM TO A STRAIGHT LINE DRAWN BETWEEN SAID BENCHMARK POINTS. ELEVATIONS ARE IN FEET ABOVE U.S.C. & G.S. SEA LEVEL DATUM OF 1929. THIS DRAWING AND THE DATA HEREON ARE HEREBY MADE A PART OF THE SPECIFICATIONS. WORK SHALL BE CONSTRUCTED ACCORDING TO SPECIFICATIONS ON FILE IN THE OFFICE OF THE COUNTY ENGINEER AND SHALL BE PROSECUTED ONLY IN THE PRESENCE OF THE COUNTY ENGINEER. BEFORE WORK CAN BE STARTED, THE CONTRACTOR MUST OBTAIN A PERMIT TO EXCAVATE IN COUNTY STREETS FROM THE L.A. COUNTY ROAD DEPT. THE WORK SHALL BE MADE IN ACCORDANCE WITH THE COUNTY ENGINEER, P.L.O.M. 124 F.A.M. AMERICAN BUILDING CODE. INSURANCE SUFFICIENT TO COVER THE COST OF CONSTRUCTION IN ACCORDANCE WITH PLANS. APPROVAL OF THIS PLAN BY THE COUNTY OF LOS ANGELES DOES NOT CONSTITUTE A REPRESENTATION AS TO THE ACCURACY OF THE LOCATION OF OR THE EXISTENCE OR NON-EXISTENCE OF ANY UNDERGROUND UTILITY PIPE, OR STRUCTURES WITHIN THE LIMITS OF THIS PROJECT. THIS NOTE APPLIES TO ALL PAGES. IF WORK IS TO BE DONE IN A STATE HIGHWAY, A PERMIT MUST BE OBTAINED FROM THE STATE OF CALIFORNIA, DIVISION OF HIGHWAYS, 120 SOUTH BRIDGE STREET.

COUNTY OF LOS ANGELES, CALIFORNIA

APPROVED, JOHN A. LAMBE, COUNTY ENGINEER APPROVED, A. M. RAWN, CHIEF ENGINEER
 BY: [Signature] SANITATION ENGINEER BY: [Signature] CIVIL ENGINEER
 CHECKED BY: [Signature] 6-26-56
 OFFICE OF COUNTY ENGINEER, REG. C. E. NO. 7360

NO CHARGE FOR CONNECTIONS

23,567



C-3881-2

RL