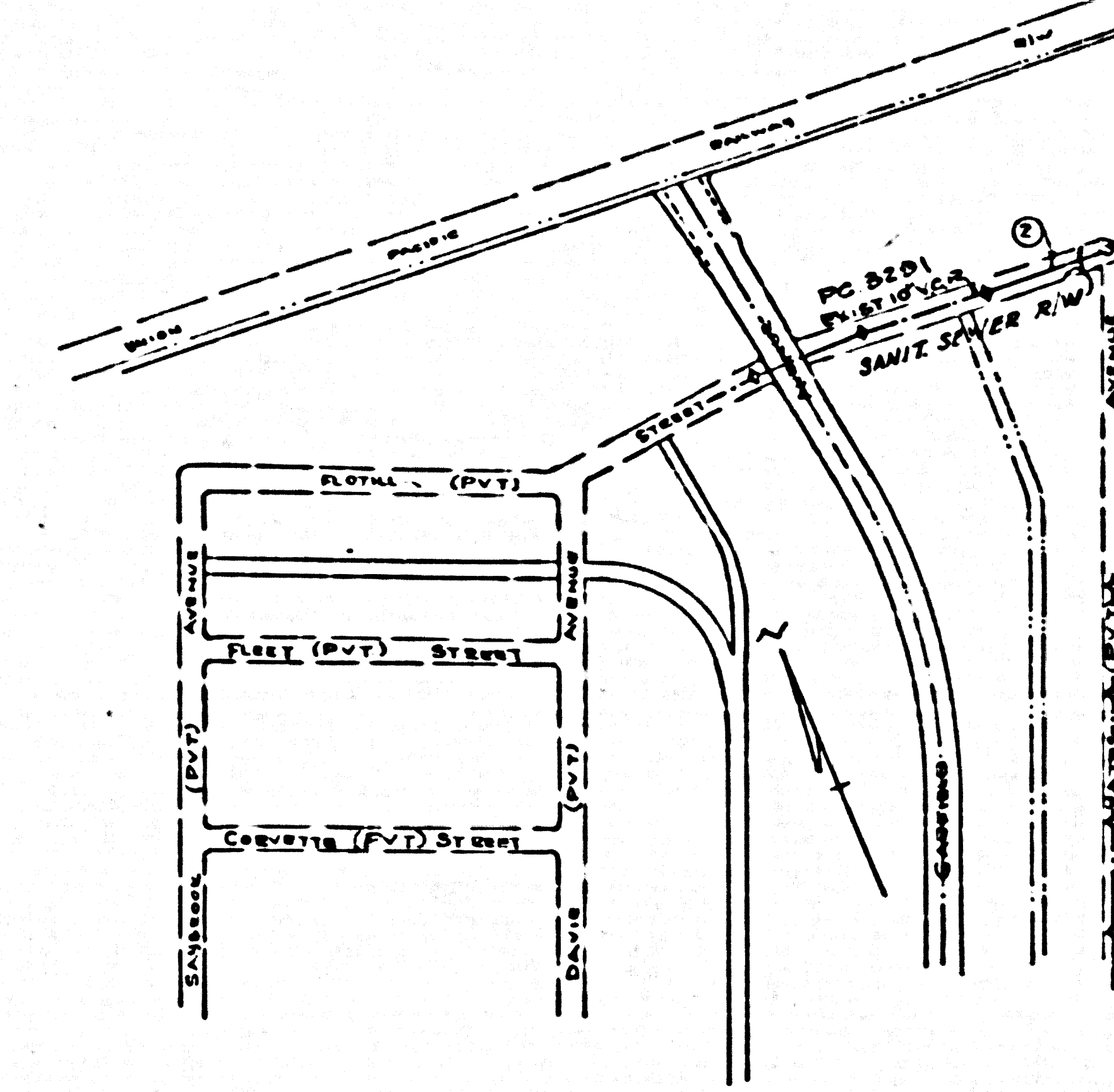


Trim Line

# E. LOS ANGELES BLDG. DIST. NO. 6

PROFILE ALIGNMENT AND GRADE OF P.C.3882  
SANITARY SEWERS PAGE 1  
TO BE CONSTRUCTED IN



- NOTES
- PROVIDE STAKES ON THE PROPERTY LINE OR PROPERTY LINES PRODUCED AT RIGHT ANGLES TO THE SEWER LINE AT THE CENTER LINE OF EACH MANHOLE.
  - NO REPRESENTATIVE OF THE COUNTY ENGINEER WILL SURVEY OR LAYOUT ANY PORTION OF THE WORK.
  - THE OWNER OR HIS AUTHORIZED REPRESENTATIVE SHALL FURNISH THE COUNTY ENGINEER WITH GRADE SHEETS AND STATION FOR ALL HOUSE LATERALS AND Y BRANCHES AND SHALL PROVIDE STAKES FOR THEM AT THEIR PROPER LOCATIONS WITH STATION AND PLAINLY MARKED. ANY CHANGE IN LOCATION SHALL BE INDICATED BY WRITING BY THE OWNER OR HIS REPRESENTATIVE.
  - NO REVISIONS SHALL BE MADE IN THESE PLANS WITHOUT THE APPROVAL OF THE COUNTY ENGINEER.
  - USE STANDARD MANHOLE FRAMES AND COVERS, S-A-117.
  - USE STANDARD STRENGTH PIPE EXCEPT AS NOTED.
  - USE CEMENT MORTAR FOR ALL VITRIFIED CLAY PIPE JOINTS.
  - RESURFACE ALL TRENCH WITHIN PAVED AREA TO MEET L. A. COUNTY ROAD DEPT., OR CALIF. STATE HIGHWAY DEPT. REQUIREMENTS IN ACCORDANCE WITH PERMITS.
  - INDICATE FOUR FEET OF SEWER AT POINTS OF INTERFERENCE WITH POLES, S-A-117.
  - POLES-SANITARY-NO-NO-COMMUNICATIONS-UNDER-SEWER-AS-INDICATED-ON-PLANS-AND-SEE-SEWER-CURB-GRAB-BASIN-AS-NOTED.
  - ALL STRUCTURES SHALL BE BUILT SEWER STRUCTURES, S-A-104.
  - FOR ALLOWABLE LEAKAGE TEST USE FORMULA NO. 1000, SPEC. 507 III.
  - MANHOLE TOPS IN UNIMPROVED RIGHTS-OF-WAY TO BE 6" ABOVE SURFACE OVER SEWER.

INDEX MAP SCALE 1"=500'

B.M. 25A (I.L.O. 308, 26 "A")  
MONUMENT 35 FT. TO E. OF  
STA. 26+56.50, 15' DEEP ON  
WASHINGTON BLDG. OF  
TELEGRAPH BLDG. (S.D. EDGE)  
E.L. 100.618

NO CHARGE FOR CONNECTIONS  
D. McLean 4-9-56

checked 4-26-56 McLean

## FLOTILLA STREET. (PRIVATE ST. & SANITARY SEWER R/W) PRIVATE CONTRACT NO. 3882

W.S. 36 (2)  
1 SHEET, 2 PAGES  
SCALE: 1"=10' FEBRUARY 1956  
PREPARED IN THE OFFICES OF

CENTRAL MANUFACTURING DIST. INC.  
By Arthur H. Cooper  
REG. C. E. NO. 7709

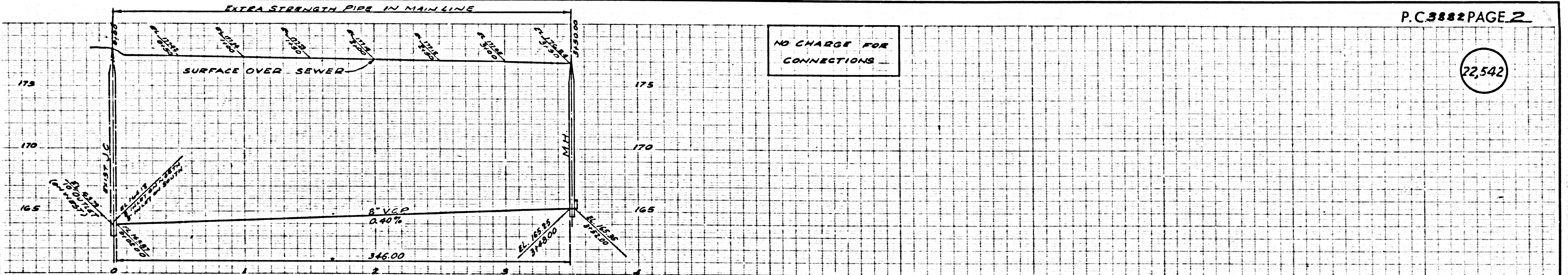
FOR LEGEND SEE PLAN NO. S-A 54

NOTE:  
GRADES TO WHICH THE IMPROVEMENT IS TO BE CONSTRUCTED ARE SHOWN ON PLANS AND PROFILE GRADE POINTS FOR TOP OF CURB, CENTER LINE OF STREET, OR CENTER LINE OF ALLEYS ARE SHOWN BY CIRCLES ON PLANS. AT ALL POINTS BETWEEN DESIGNATED POINTS THE GRADE SHALL BE ESTABLISHED SO AS TO CONFORM TO A STRAIGHT LINE DRAWN BETWEEN SAID DESIGNATED POINTS.  
ELEVATIONS ARE IN FEET ABOVE U.S.C. & G.S. SEA LEVEL, DATUM OF 1929.  
THIS DRAWING AND THE DATA HEREON ARE HEREBY MADE A PART OF THE SPECIFICATIONS.  
WORK SHALL BE CONSTRUCTED ACCORDING TO SPECIFICATIONS ON FILE IN THE OFFICE OF THE COUNTY ENGINEER AND SHALL BE INSPECTED ONLY IN THE PRESENCE OF THE COUNTY ENGINEER.  
BEFORE WORK CAN BE STARTED, THE CONTRACTOR MUST OBTAIN A PERMIT TO EXCAVATE IN COUNTY STREETS FROM THE L. A. COUNTY ROAD DEPT., 100 W. 10TH ST. AND MAKE A DEPOSIT WITH THE COUNTY ENGINEER, ROOM 324 SAN AMERICAN BUILDING, 315 SO. BROADWAY SUFFICIENT TO COVER THE COST OF CONSTRUCTION INSPECTION AND RECORD PLANS.  
APPROVAL OF THIS PLAN BY THE COUNTY OF LOS ANGELES DOES NOT CONSTITUTE A REPRESENTATION AS TO THE ACCURACY OF THE LOCATION OF OR THE EXISTENCE OR NON-EXISTENCE OF ANY UNDERGROUND UTILITY PIPE, OR STRUCTURE WITHIN THE LIMITS OF THIS PROJECT. THIS NOTE APPLIES TO ALL PAGES.  
IF WORK IS TO BE DONE IN A STATE HIGHWAY, A PERMIT MUST BE OBTAINED FROM THE STATE OF CALIFORNIA, DIVISION OF HIGHWAYS, 128 SOUTH SPRING STREET.

COUNTY OF LOS ANGELES, CALIFORNIA

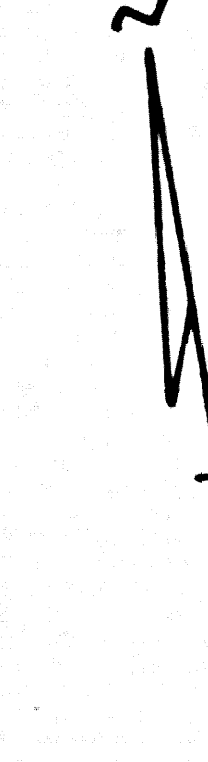
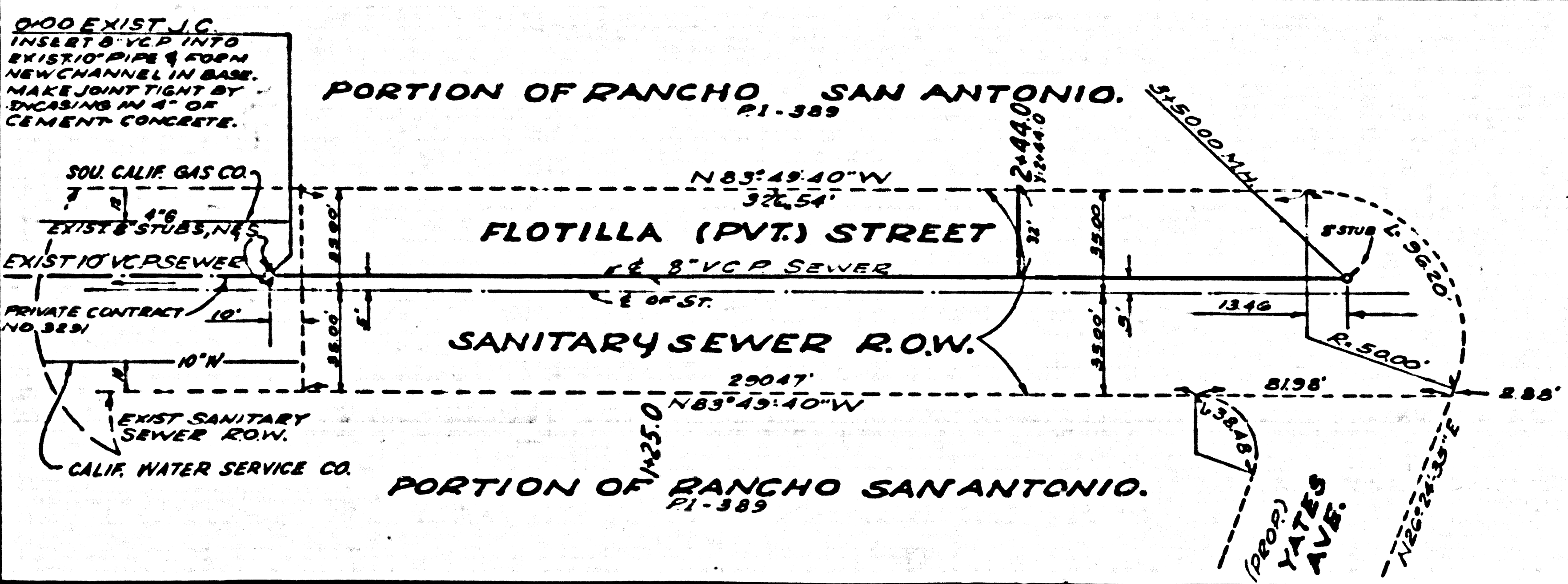
APPROVED, JOHN A. LAMBE, COUNTY ENGINEER  
APPROVED, A. M. BAWN, CHIEF ENGINEER  
BY A. P. Collins CITY AM. DES. NO. 2  
SANITATION ENGINEER BY J. P. ... OFFICE ENGINEER  
CHECKED BY McLean 4-9-56  
OFFICE OF COUNTY ENGINEER, BUREAU NO. 7860

P.C.3882 PAGE 2



NO CHARGE FOR CONNECTIONS

22,542



P.C.3882

FLOTILLA ST. R.O.W.

588E 29

Trim Line