

B.M. 56 1281 ; Elev. 377.54
 15'± N/O of Valley Blvd & 10'± N/O of Pass and Covina Road
 C.S. Mon. Marked B.M. 11-106, 1952. R.E. 63

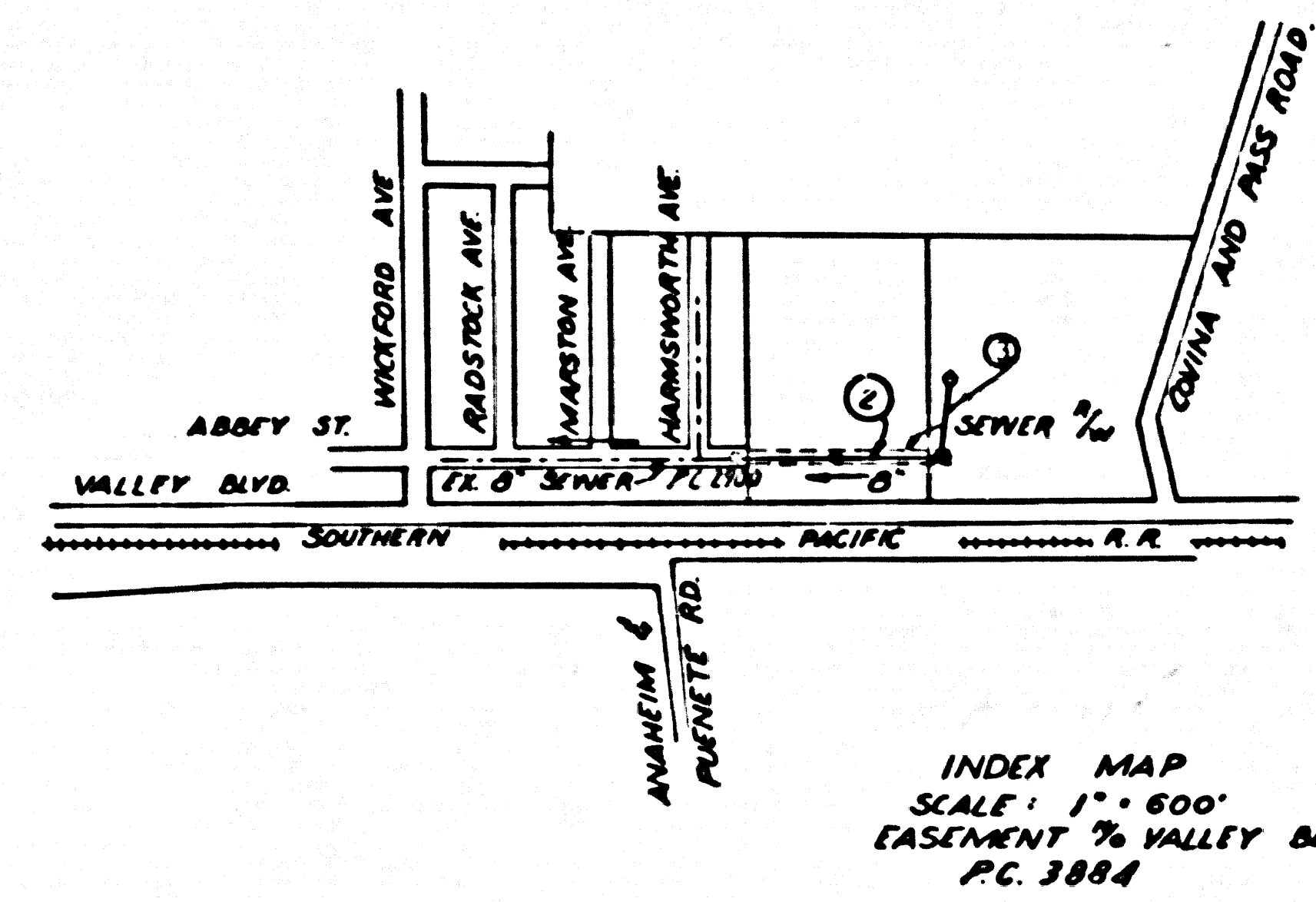
PUENTE BLDG. DIST. NO. 2

SEWER EASEMENT NORTH
 OF VALLEY BLVD.
 PRIVATE CONTRACT NO. 3884

W.S. 38
 2 SHEETS; 3 PAGES
 SCALE: 1" = 40' HORIZ. 1" = 4' VERT.
 MARCH, 1956
 PREPARED IN THE OFFICES OF
 L. FREDERICK PACK (3)

- NOTE:
 PROVIDE STAKES ON THE PROPERTY LINE OR PROPERTY LINES PRODUCED AT RIGHT ANGLES TO THE SEWER LINE AT THE CENTER LINE OF EACH MANHOLE.
 NO REPRESENTATIVE OF THE COUNTY ENGINEER WILL SURVEY OR LAYOUT ANY PORTION OF THE WORK.
 THE OWNER OR HIS AUTHORIZED REPRESENTATIVE SHALL FURNISH THE COUNTY ENGINEER WITH GRADE SHEETS AND STATION FOR ALL HOUSE LATERALS AND T-BRANCHES AND SHALL PROVIDE STAKES FOR THEM AT THEIR PROPER LOCATIONS WITH STATION AND PLAINLY MARKED. ANY CHANGE IN LOCATION SHALL BE REQUESTED IN WRITING BY THE OWNER OR HIS REPRESENTATIVE.
 NO REVISIONS SHALL BE MADE IN THESE PLANS WITHOUT THE APPROVAL OF THE COUNTY ENGINEER.
 1. USE STANDARD MANHOLE FRAMES AND COVERS, S.A. 117, EXCEPT AS NOTED.
 2. USE STANDARD MANHOLE PIPES EXCEPT AS NOTED.
 3. USE CEMENT MORTAR FOR ALL VITRIFIED CLAY PIPE JOINTS.
 4. RESURFACE ALL TRENCH WITHIN PAVED AREA TO MEET L.A. COUNTY ROAD DEPT. OR CALIF. STATE HIGHWAY DEPT. REQUIREMENTS IN ACCORDANCE WITH PERMITS.
 5. ENCASE FOUR FEET OF SEWER AT POINTS OF INTERFERENCE WITH POLES, S.A. 118.
 6. HOUSE ENTRANCE TO BE CONSTRUCTED WITHIN SEWER BY PROPERTY OWNER.
 7. ALL STRUCTURES SHALL BE BRICK SEWER STRUCTURE, S.A. 104, EXCEPT AS NOTED.
 8. FOR ALLOWABLE MESSAGE TEST USE FORMULA NO. 1, S.P.C.S., SEC. 54.
 9. MANHOLE TOPS IN UNIMPROVED RIGHTS-OF-WAY TO BE 6" ABOVE FINISH GRADE EXCEPT AS NOTED.

NO CHARGE FOR CONNECTIONS
 L.F. Pack 2-25-56



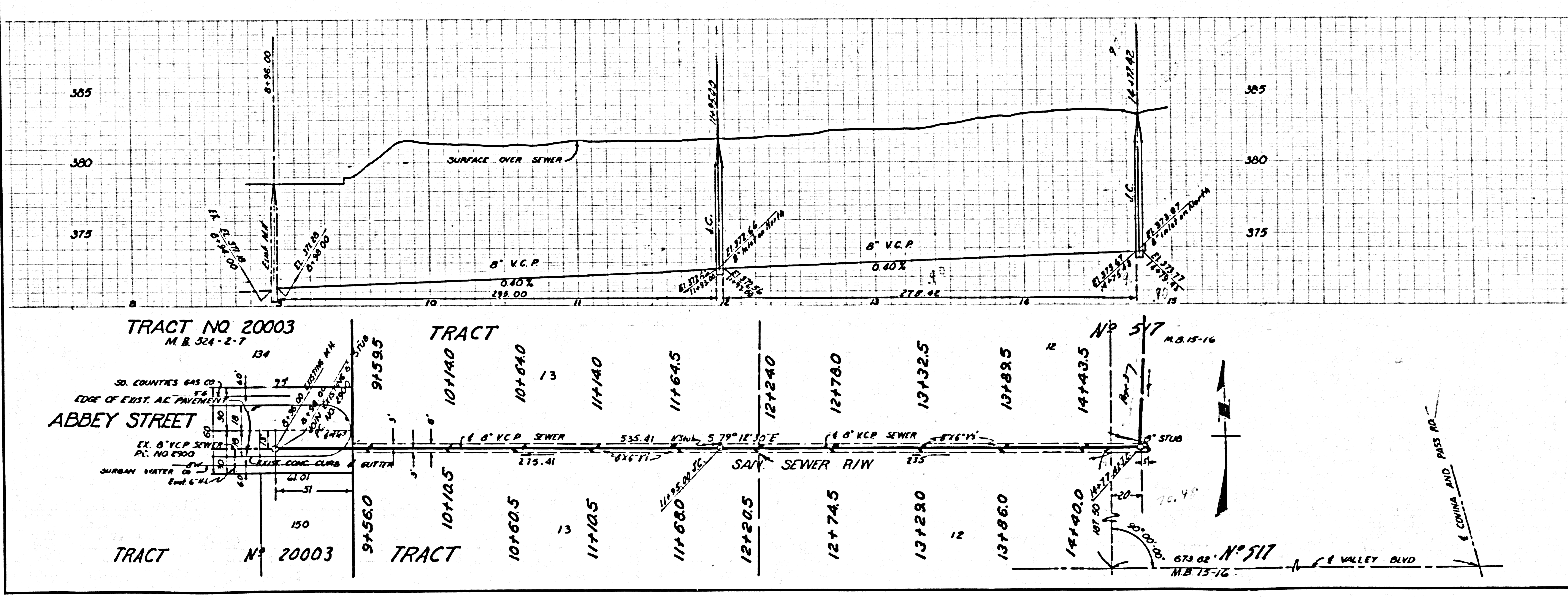
ISSUE NO PERMITS UNTIL R/W IS DEDICATED TO THE CITY - CALL MAIN OFFICE.

APPROVED:
 L.F. Pack
 INDUSTRIAL WASTE DIVISION

NOTE:
 GRADES TO WHICH THE IMPROVEMENT IS TO BE CONSTRUCTED AND SHOWN ON PLANS AND PROFILES GRADE POINTS FOR TOP OF CURBS, CENTER LINE OF STREETS, OR CENTER LINE OF ALLEYS ARE SHOWN BY CIRCLES ON PROFILES AT ALL POINTS BETWEEN DESIGNATED POINTS THE GRADE SHALL BE ESTABLISHED SO AS TO CONFORM TO A STRAIGHT LINE DRAWN BETWEEN SAID DESIGNATED POINTS.
 ELEVATIONS ARE IN FEET ABOVE M.S.L. EXCEPT AS NOTED.
 THE DRAWING AND THE DATA HEREON ARE HEREBY MADE A PART OF THE SPECIFICATIONS.
 WORK SHALL BE CONSTRUCTED ACCORDING TO SPECIFICATIONS ON FILE IN THE OFFICE OF THE COUNTY ENGINEER AND SHALL BE PROSECUTED ONLY IN THE PRESENCE OF THE COUNTY ENGINEER.
 BEFORE WORK CAN BE STARTED, THE CONTRACTOR MUST OBTAIN A PERMIT TO EXCAVATE IN COUNTY STREETS FROM THE L.A. COUNTY ROAD DEPT., 100 W. 7TH ST. AND MAKE A DEPOSIT WITH THE COUNTY ENGINEER, ROOM 124 PAV. AMERICAN BLDG., 233 SO. BROADWAY SUFFICIENT TO COVER THE COST OF CONSTRUCTION INSPECTION AND RECORD PLANS.
 APPROVAL OF THIS PLAN BY THE COUNTY OF LOS ANGELES DOES NOT CONSTITUTE A REPRESENTATION AS TO THE ACCURACY OF THE LOCATION OF OR THE EXISTENCE OR NON-EXISTENCE OF ANY UNDERGROUND UTILITY PIPE, OR STRUCTURE WITHIN THE LIMITS OF THIS PROJECT THIS NOTE APPLIES TO ALL PAGES.
 IF WORK IS TO BE DONE ON A STATE HIGHWAY, A PERMIT MUST BE OBTAINED FROM THE STATE OF CALIFORNIA, DIVISION OF HIGHWAYS, 120 SOUTH SPRING STREET.
 CITY OF LA PUENTE, CALIFORNIA
 APPROVED, JOHN A. LAMBE, CITY ENGINEER
 APPROVED, A. M. RAWN, CHIEF ENGINEER
 BY: A.P. Collins, SANITATION ENGINEER
 BY: J. Posthumus, OFFICE ENGINEER
 CHECKED BY: P. F. Johnson, 9-26-56
 OFFICE OF COUNTY ENGINEER, REG. C. E. NO. 7860

Remission Approved
 L.F. Pack 2-15-57
 Office of the County Engineer
 147 E.B. 9406

NO CHARGE FOR CONNECTIONS
 24,156



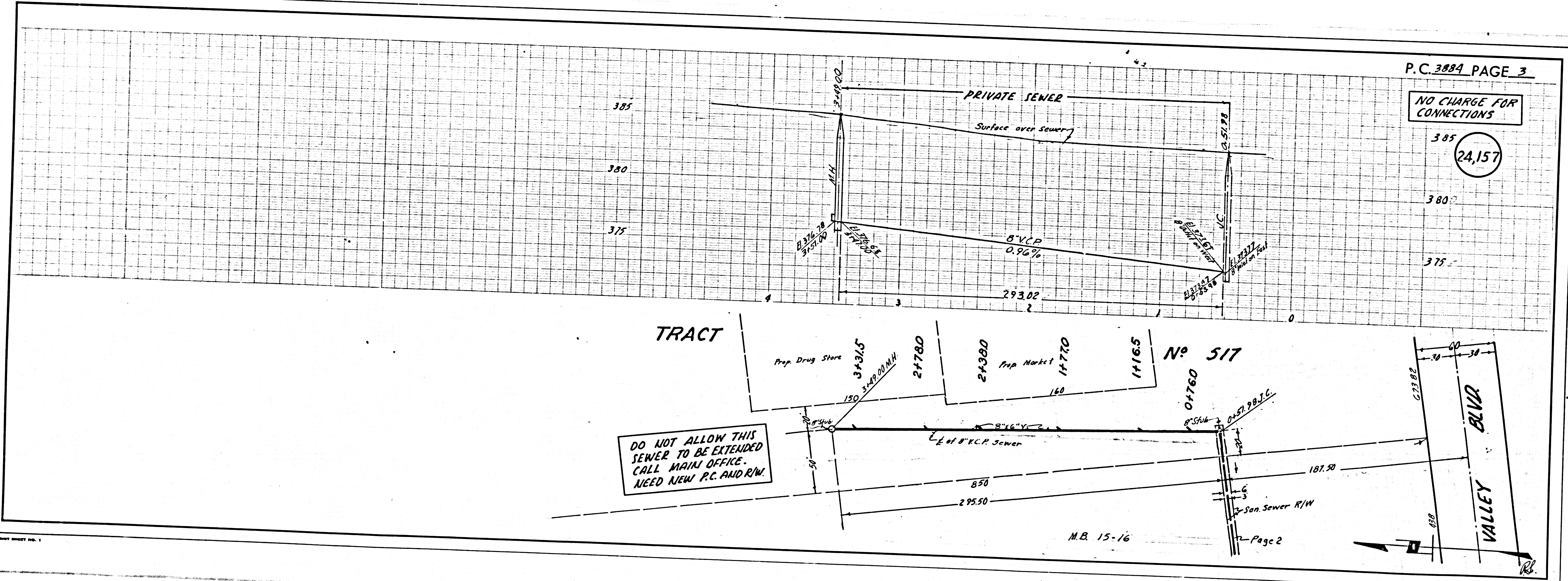
P.C. 3884

NO CHARGE FOR CONNECTIONS

385
24,157

380

375



DO NOT ALLOW THIS SEWER TO BE EXTENDED CALL MAIN OFFICE. NEED NEW P.C. AND R/W.