

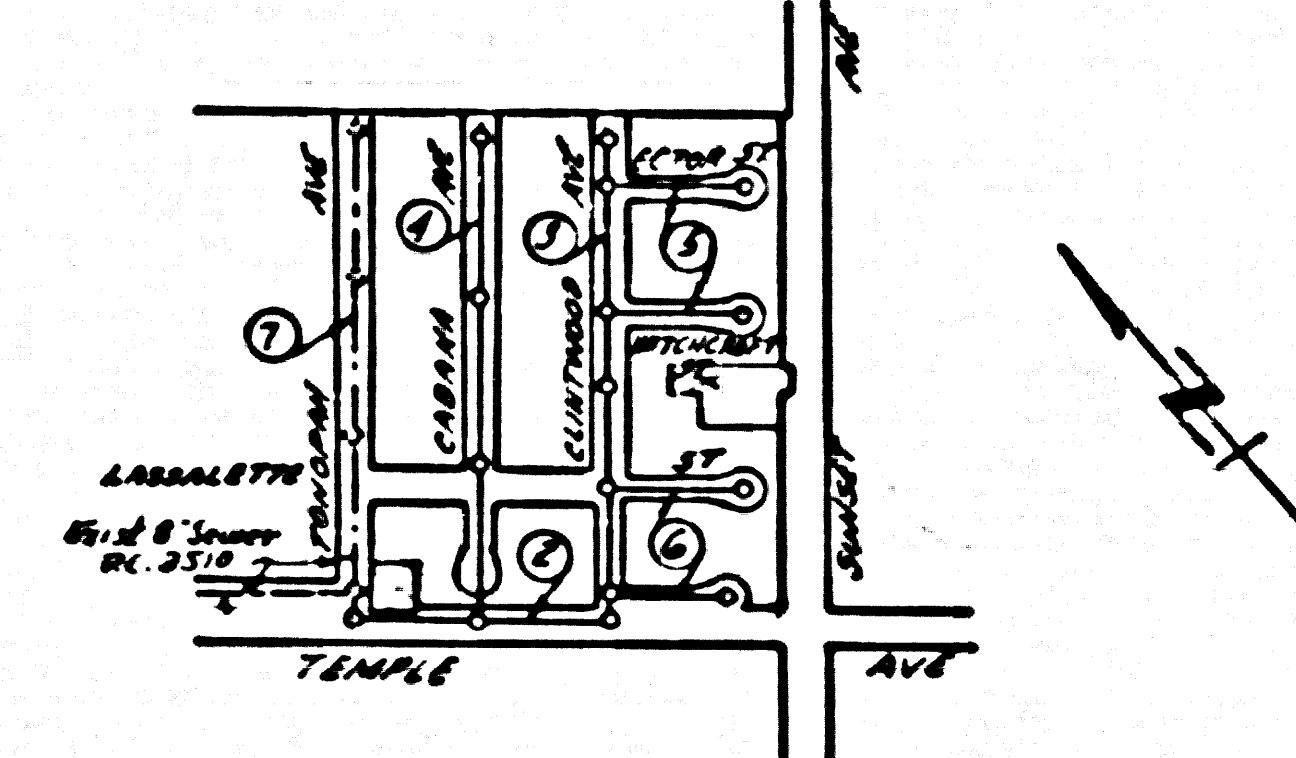
PUEENTE BLDG. DIST. NO. 2

PROFILE ALIGNMENT AND GRADE OF **P.C. 3886**
SANITARY SEWERS PAGE **1**
 TO BE CONSTRUCTED IN
TRACT N° 21728 (23,194)

PRIVATE CONTRACT NO. 3886
 W.S. 38
 4 SHEETS, 7 PAGES
 SCALE: 1" = 10' HORIZ. 1" = 4' VERT. FEB. 1956
 PREPARED IN THE OFFICES OF
BARCLAY ENGINEERING CO.
 BY *John A. Jones* REG. C. E. NO. 7577
 FOR LEGEND SEE PLAN NO. S-A-64

B.M. S.G. 1095 El. 311.41 N.E. edge of 1st conc. step of house # 356 Sunset Ave & Temple Ave.

- NOTES**
- PROVIDE STAKES ON THE PROPERTY LINE OR PROPERTY LINES PRODUCED AT RIGHT ANGLES TO THE SEWER LINE AT THE CENTER LINE OF EACH MANHOLE.
 - NO REPRESENTATIVE OF THE COUNTY ENGINEER WILL SURVEY OR LOCATE ANY PORTION OF THE WORK.
 - THE OWNER OR HIS AUTHORIZED REPRESENTATIVE SHALL FURNISH THE COUNTY ENGINEER WITH GRADE SHEETS AND STATION FOR ALL HOUSE LATERALS AND Y BRANCHES AND SHALL PROVIDE STAKES FOR THEM AT THEIR CORNER LOCATIONS WITH BEATING AND PLAINLY MARKED. ANY CHANGE IN LOCATION SHALL BE REQUESTED IN WRITING BY THE OWNER OR HIS REPRESENTATIVE. NO REVISIONS SHALL BE MADE IN THESE PLANS WITHOUT THE APPROVAL OF THE COUNTY ENGINEER.
 - USE STANDARD MANHOLE FRAMES AND COVERS, S.A. 117, EXCEPT AS NOTED.
 - USE STANDARD STRENGTH PIPE EXCEPT AS NOTED.
 - USE CEMENT MORTAR FOR ALL VITRIFIED CLAY PIPE JOINTS.
 - RESURFACE ALL TRENCH WITHIN PAVED AREA TO MEET L. A. COUNTY ROAD DEPT. OR CALIF. STATE HIGHWAY DEPT. REQUIREMENTS IN ACCORDANCE WITH PERMITS.
 - ENCASE FOUR FEET OF SEWER AT POINTS OF INTERFERENCE WITH POLES, S.A. 119.
 - HOUSE LATERALS TO BE CONSTRUCTED WITH INVERTS AT PROPERTY LINE 6 FEET BELOW CURB GRADE EXCEPT AS NOTED.
 - ALL STRUCTURES SHALL BE BRICK SEWER STRUCTURES, S.A. 164, EXCEPT AS NOTED.
 - FOR ALLOWABLE LEAKAGE TEST USE FORMULA NO. ONE, SPEC. 311.
 - MANHOLE TOPS IN UNIMPROVED RIGHTS-OF-WAY TO BE 6" ABOVE FINISHED GRADE.
 - The Private Engineer is to furnish the House Lateral depth at the property line below the top of curb elevation for each house lateral, on the grade sheet.



INDEX MAP
 TRACT N° 21728
 P.C. 3886
 Scale: 1" = 600'

COLLECT CHARGES AS INDICATED
L. Curtis 6-4-56

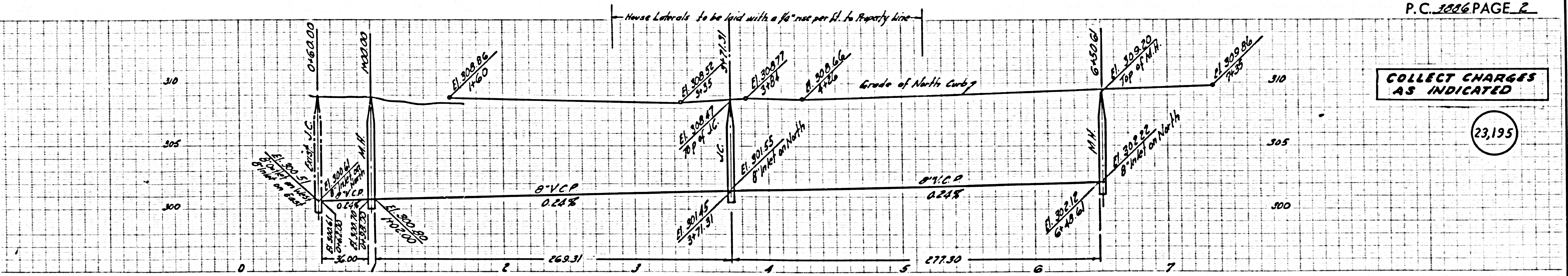
NOTE:
 GRADES TO WHICH THIS IMPROVEMENT IS TO BE CONSTRUCTED ARE SHOWN ON PLANS AND PROFILE GRADE POINTS FOR TOP OF CURB, CENTER LINE OF STREETS OR CENTER LINE OF ALLEYS ARE SHOWN BY CIRCLES ON PROFILES. IF ALL POINTS BETWEEN DESIGNATED POINTS THE GRADE SHALL BE ESTABLISHED SO AS TO CONFORM TO A STRAIGHT LINE DRAWN BETWEEN SAID DESIGNATED POINTS.
 ELEVATIONS ARE IN FEET ABOVE U.S.C. & G.S. Sea Level Datum of 1929.
 THIS DRAWING AND THE DATA HEREON ARE HEREBY MADE A PART OF THE SPECIFICATIONS.
 WORK SHALL BE CONSTRUCTED ACCORDING TO SPECIFICATIONS ON FILE IN THE OFFICE OF THE COUNTY ENGINEER AND SHALL BE PROSECUTED ONLY IN THE PRESENCE OF THE COUNTY ENGINEER.
 BEFORE WORK CAN BE STARTED, THE CONTRACTOR MUST OBTAIN A PERMIT TO EXCAVATE IN COUNTY STREETS FROM THE L. A. COUNTY ROAD DEPT. IN W 3RD ST. AND MAKE A REPORT WITH THE COUNTY ENGINEER, ROOM 224 PAM AMERICAN BUILDING 225 SO. BROADWAY SURVEYOR TO COVER THE COST OF CONSTRUCTION INSPECTION AND RECORD PLANS.
 APPROVAL OF THIS PLAN BY THE COUNTY OF LOS ANGELES DOES NOT CONSTITUTE A REPRESENTATION AS TO THE ACCURACY OF THE LOCATION OR OF THE EXISTENCE OR NON-EXISTENCE OF ANY UNDERGROUND UTILITY PIPE, OR STRUCTURE WITHIN THE LIMITS OF THIS PROJECT. THIS NOTE APPLIES TO ALL PAGES.
 IF WORK IS TO BE DONE IN A STATE HIGHWAY, A PERMIT MUST BE OBTAINED FROM THE STATE OF CALIFORNIA, DIVISION OF HIGHWAYS, 128 SOUTH SPRING STREET.

COUNTY OF LOS ANGELES, CALIFORNIA

APPROVED, JOHN A. LAMME, COUNTY ENGINEER
 APPROVED, A. M. RAWN, CHIEF ENGINEER
 BY *John A. Jones* REG. SANITARY ENGINEER NO. 15
 BY *A. M. Rawn* OFFICE ENGINEER
 CHECKED BY *S. K. Onda* REG. C. E. NO. 3406
 OFFICE OF COUNTY ENGINEER, 226 C. E. NO. 3406

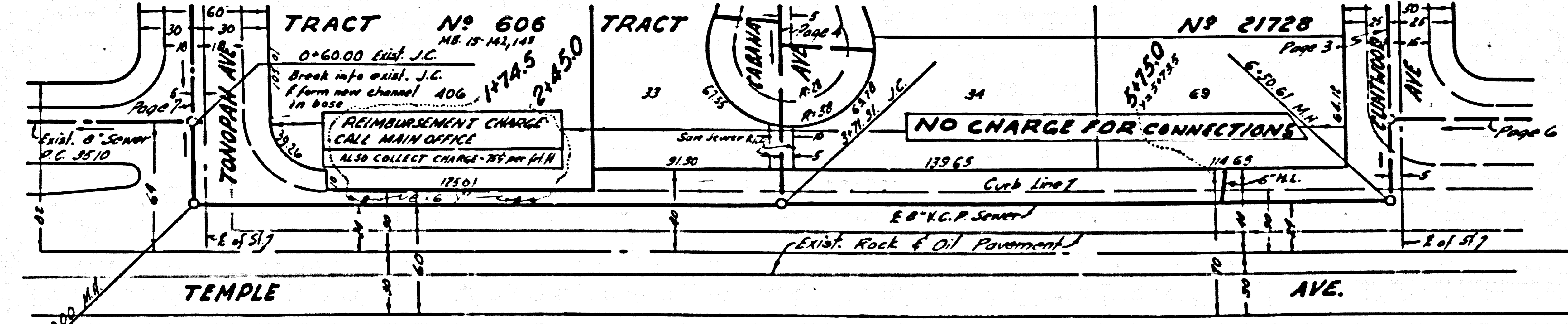
dated 8-9-56 Milavan

P.C. 3886 PAGE 2



COLLECT CHARGES AS INDICATED

(23,195)

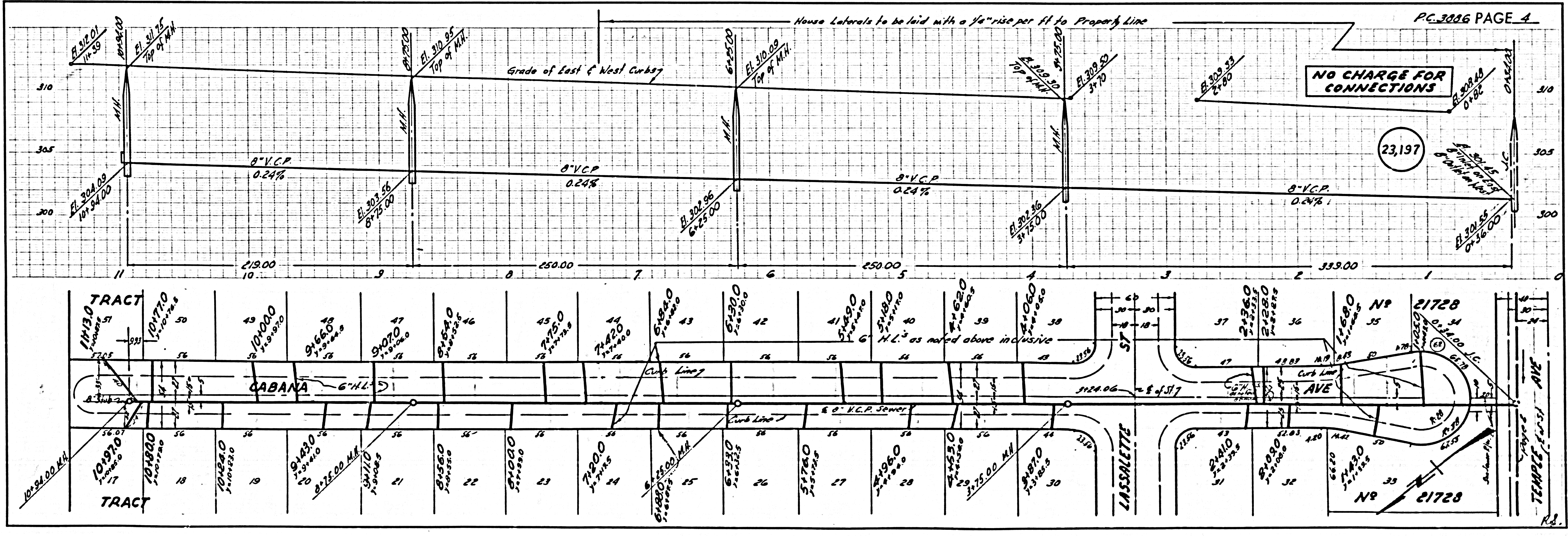
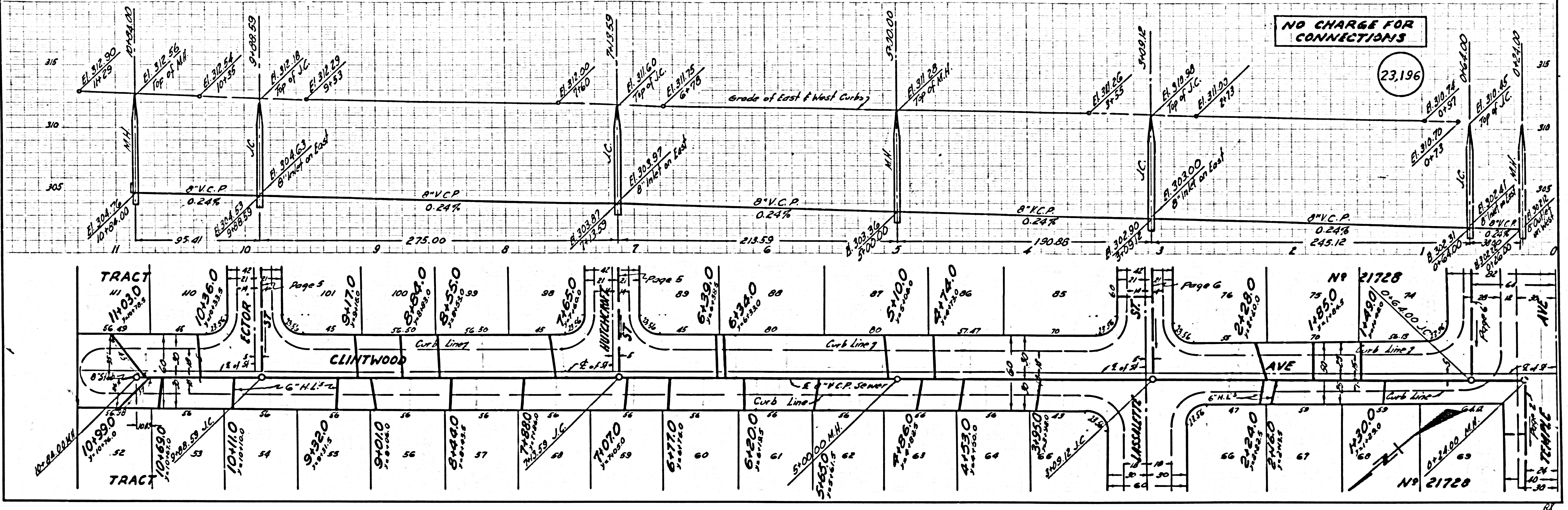


TRACT N° 606
 NE 15-142,143
 Break into exist. J.C.
 (from new channel) 406, 1474.5
 24450

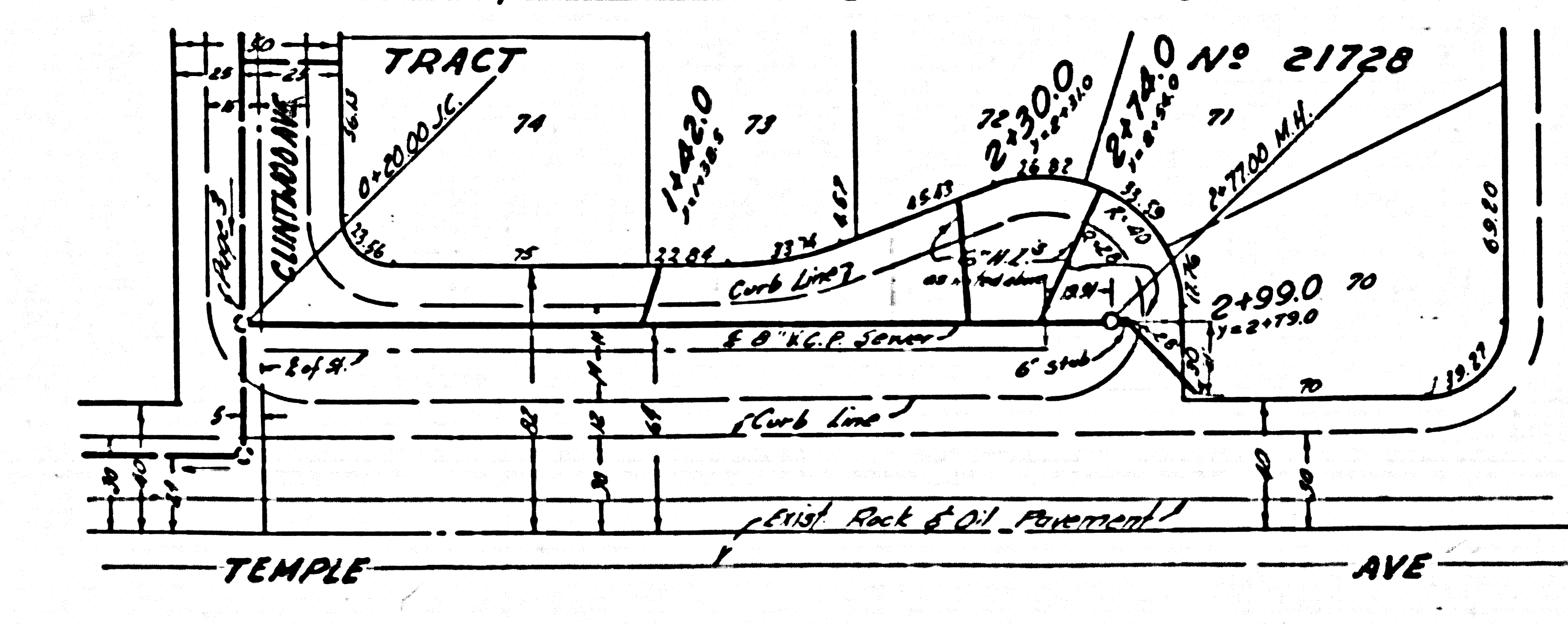
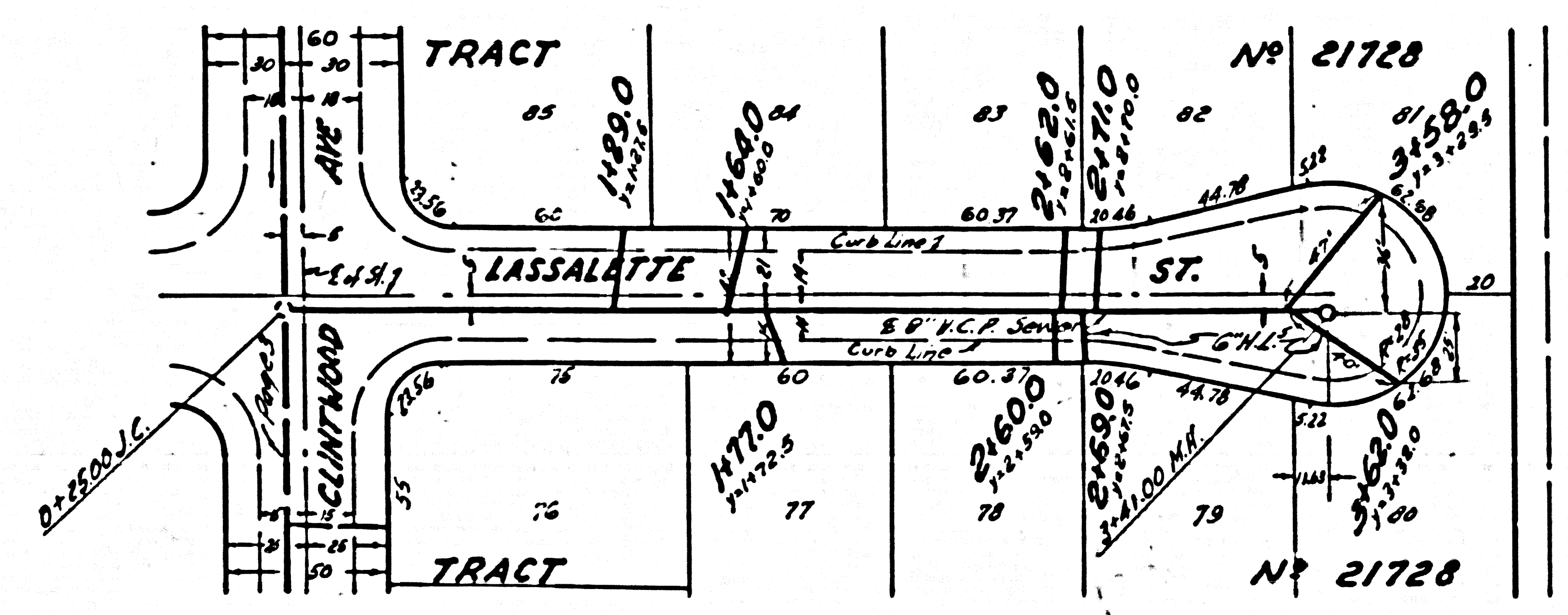
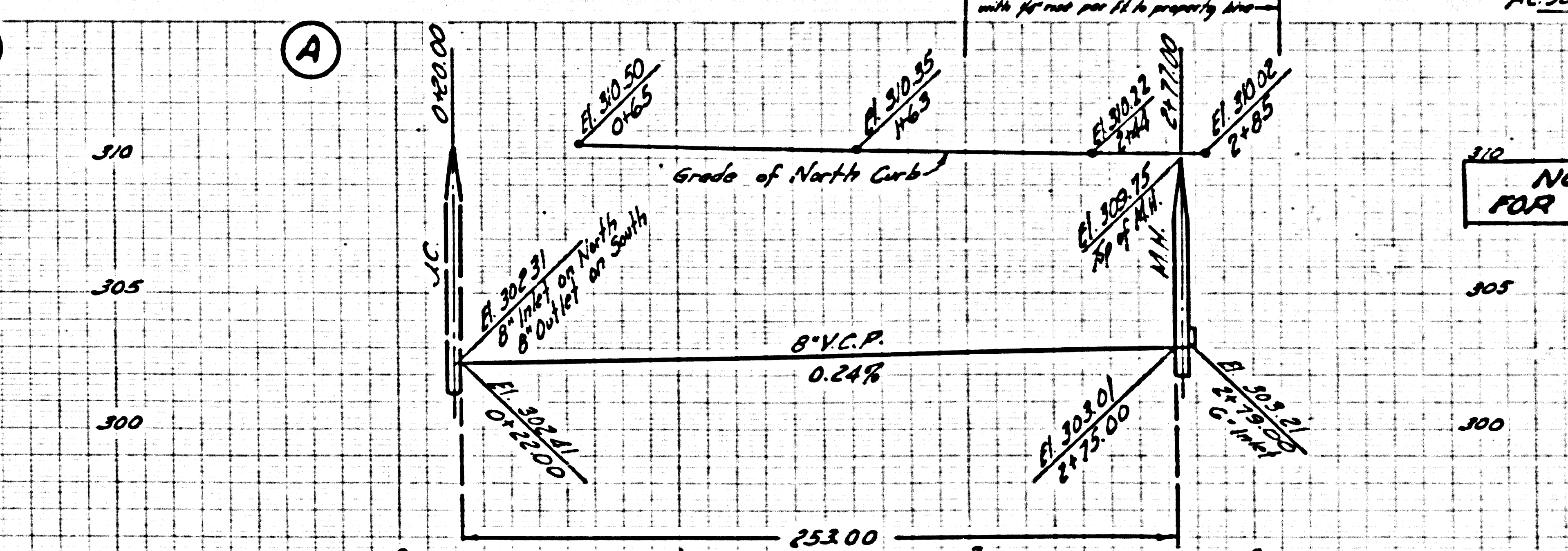
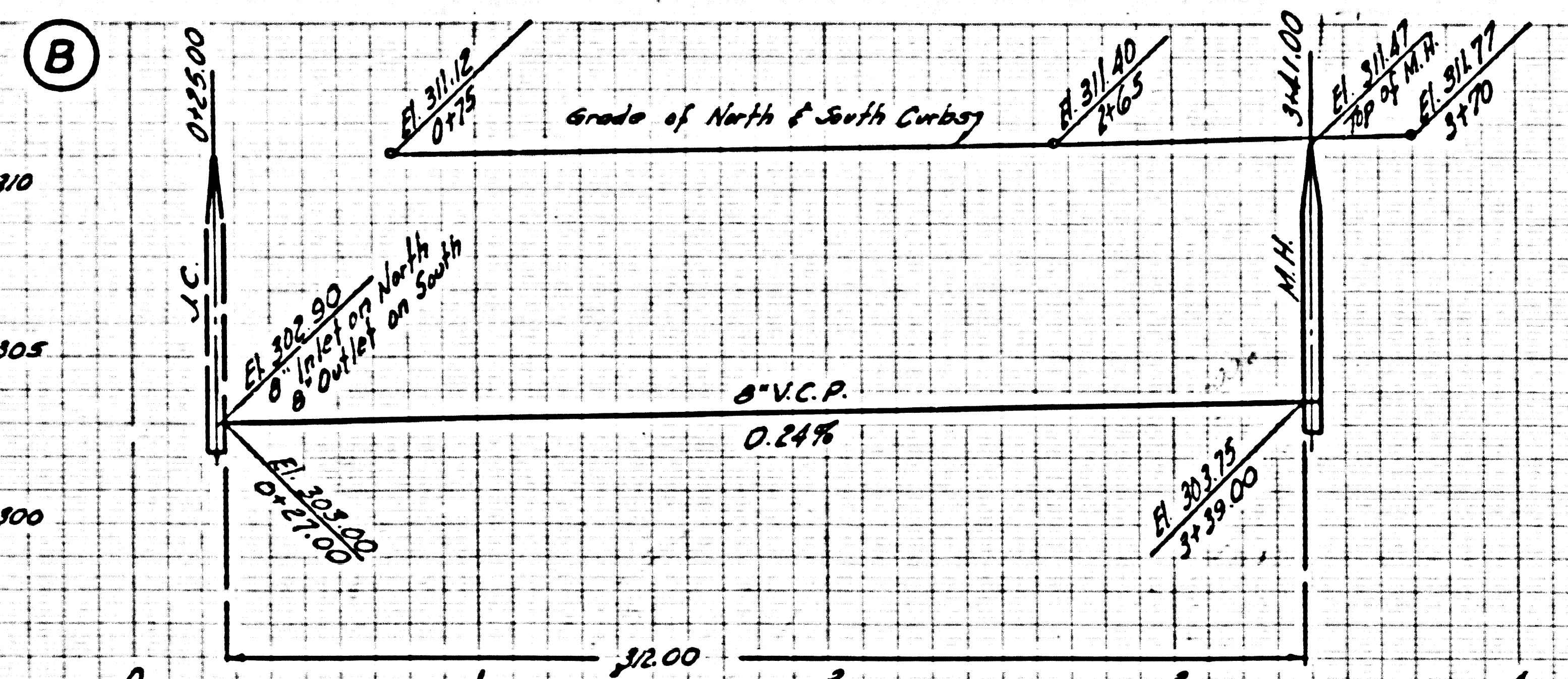
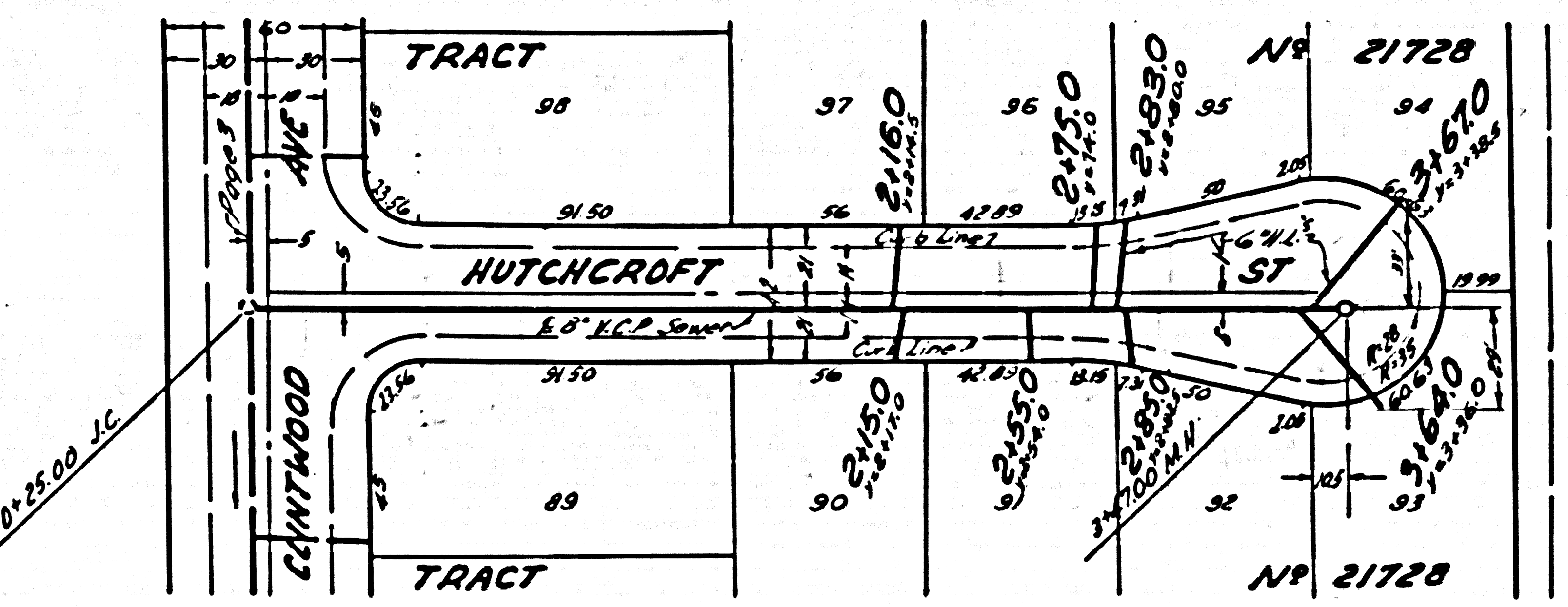
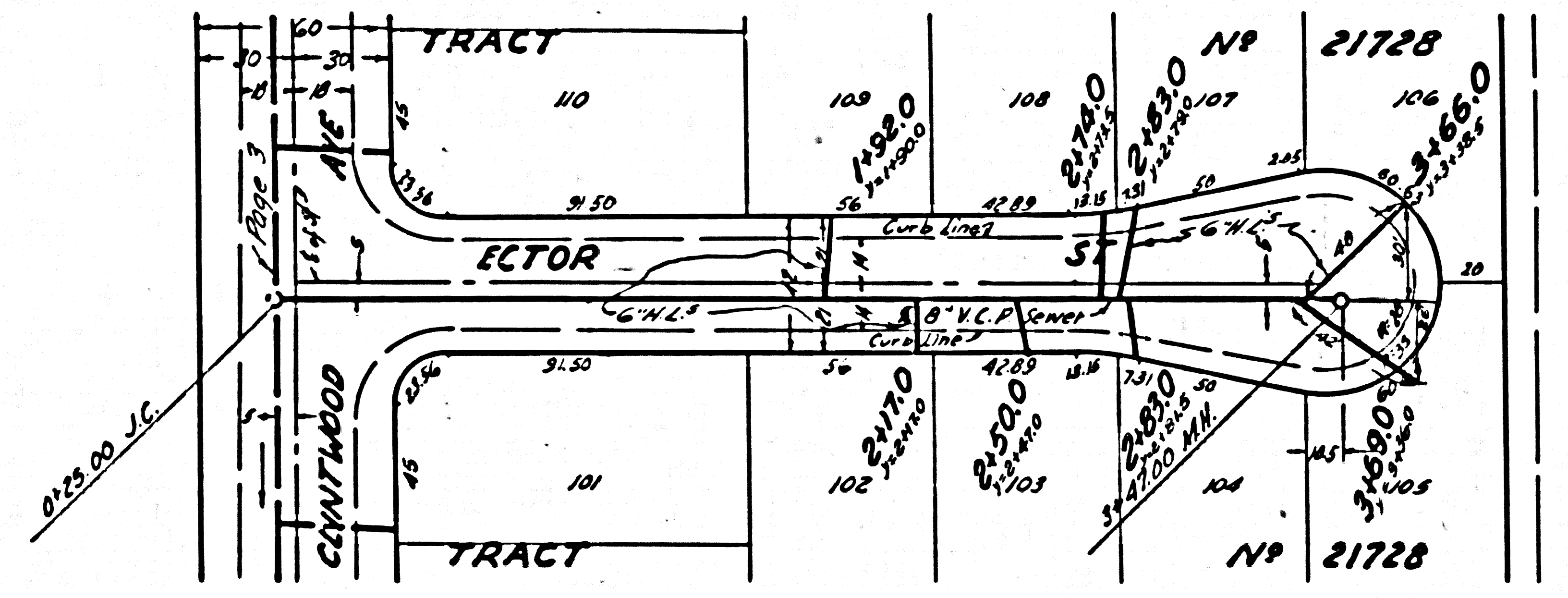
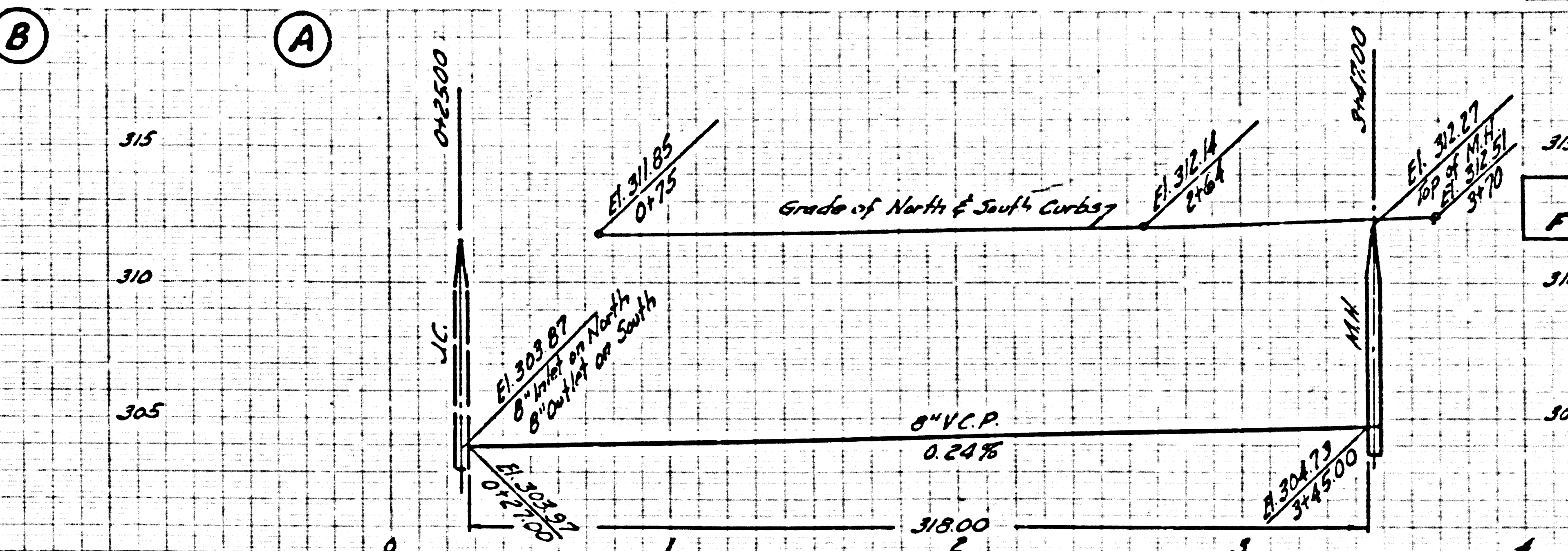
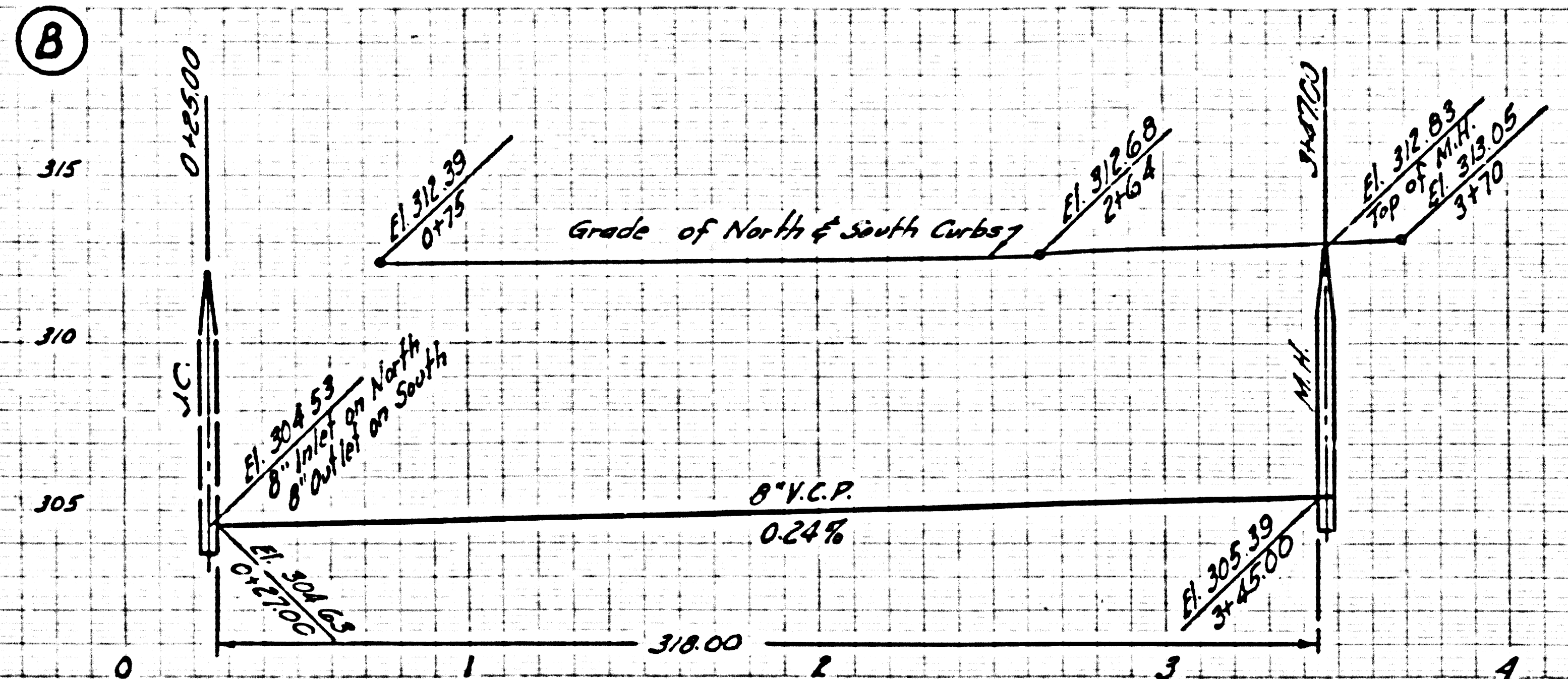
NO CHARGE FOR CONNECTIONS

REIMBURSEMENT CHARGE
 CALL MAIN OFFICE
 ALSO COLLECT CHARGE BY PERMIT

al.



PC. 3886 TRACT No. 51558



Ties Lot 94 70

PC 3886 TRACT NO 5155

