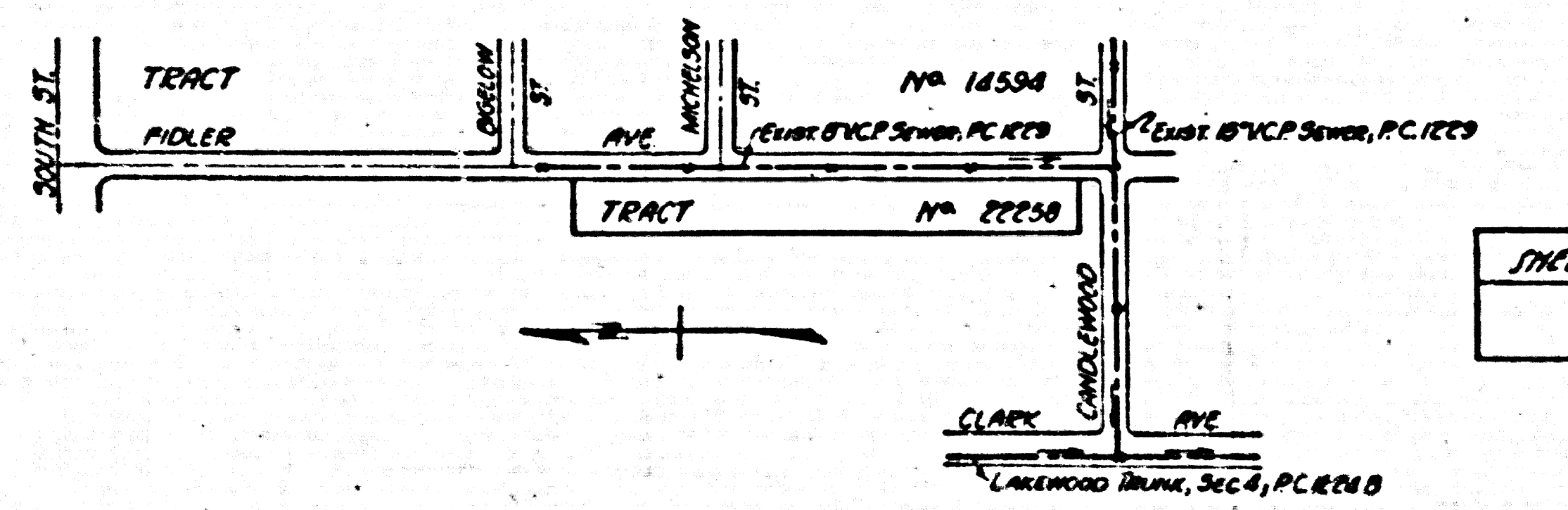


BM-5V 150-75 Elev 55.292 Road Dept
Pearce Ave. East Curb Boof Spike
100' North & South St.

BELLFLOWER BLDG. DISTRICT N° 4

- NOTE:
NO REPRESENTATIVE OF THE CITY ENGINEER WILL SURVEY OR LAY OUT ANY PORTION OF THE WORK.
THE OWNER OR HIS AUTHORIZED REPRESENTATIVE SHALL FURNISH THE CITY ENGINEER WITH GRADE SHEETS AND STATIONS FOR ALL HOUSE LATERALS AND Y BRANCHES AND SHALL PROVIDE STAKES FOR THEM AT THEIR PROPER LOCATIONS WITH STATIONING PLAINLY MARKED. ANY CHANGE OF LOCATION SHALL BE REQUESTED IN WRITING BY THE OWNER OR HIS REPRESENTATIVE.
NO REVISIONS SHALL BE MADE IN THESE PLANS WITHOUT APPROVAL OF THE CITY ENGINEER.
1. USE STANDARD MANHOLE FRAMES AND COVERS, S-117.
 2. USE STANDARD STRENGTH PIPE EXCEPT AS NOTED.
 3. USE CEMENT MORTAR FOR ALL VITRIFIED CLAY PIPE JOINTS.
 4. RESURFACE ALL TRENCH WITHIN PAVED AREA TO MEET L.A. COUNTY ROAD DEPT. REQUIREMENTS IN ACCORDANCE WITH PERMIT.
 5. ENCASE FOUR FEET OF SEWER AT POINTS OF INTERFERENCE WITH POLES, S-119.
 6. HOUSE LATERALS TO BE CONSTRUCTED WITH INVERT AT PROPERTY LINE 6 FEET BELOW CURB GRADE EXCEPT AS NOTED.
 7. ALL STRUCTURES SHALL BE BRICK SEWER STRUCTURES, S-104.
 8. PROVIDE STAKES ON THE PROPERTY LINES OR PROPERTY LINES PRODUCED, AT RIGHT ANGLES TO THE SEWER LINE AT THE CENTER LINE OF EACH MANHOLE.
 9. FOR ALLOWABLE LEAKAGE TEST USE FORMULA NO. 1 SPECS. SEC. 51.

PROFILE ALIGNMENT AND GRADE OF
SANITARY SEWERS
TO BE CONSTRUCTED IN
TRACT N° 22258 (25.163)
PRIVATE CONTRACT NO. 3889
W. S. 33
SHEET 1 OF 1 SHEETS
SCALE: VERT. 1"=4'
HOR. 1"=40' **DECEMBER, 1955**
PREPARED IN THE OFFICES OF
ENGINEERING SERVICE CORPORATION
BY *E. J. Collins*
REG. C. E. NO. 3692
FOR LEGEND
SEE PLAN NO. S-64



INDEX MAP
TRACT N° 22258
P.C. 3889
SCALE 1"=400'

SHEET N°	PAGE N°
1	1-5

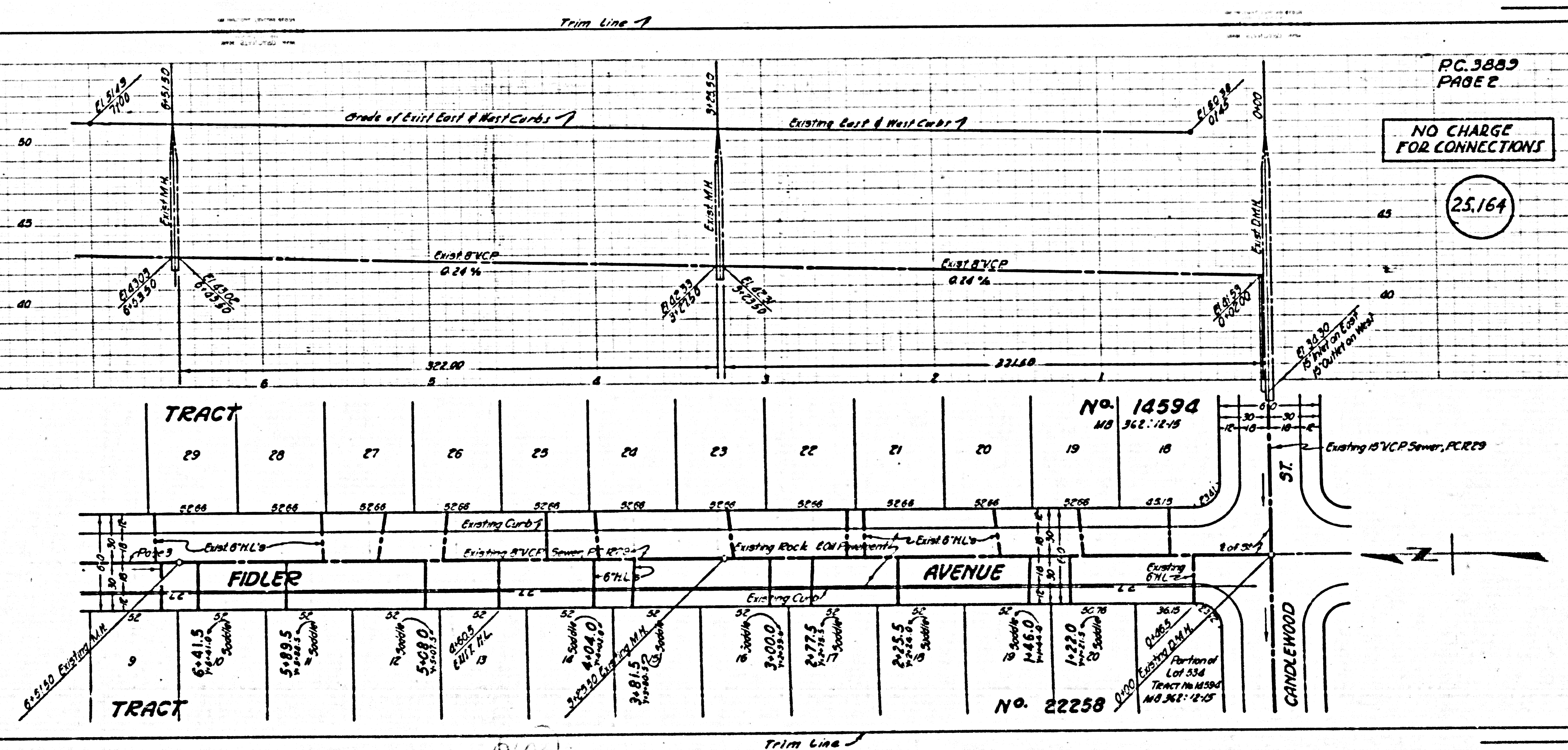
NO CHARGE
FOR CONNECTIONS
L. Carter 3-2-56

ENGINEERING SERVICE CORPORATION 1127 W. WASHINGTON BLVD. LOS ANGELES 15, CALIF. RA 87281					
REVISIONS					
				TRACED BY	<i>ONE</i>
				DES'G'D BY	
				CK'D BY	
				SUBMITTED	
SLAB STRUCTURES OK'D					
W. S. NO.	SPW. NO.	DATE	SCALE	L. S.	P. S.
5977-35		Dec. 1955	As Noted	Notes	

NOTE:
GRADES TO WHICH THIS IMPROVEMENT IS TO BE CONSTRUCTED ARE SHOWN ON PLANS AND PROFILES. GRADE POINTS FOR TOP OF CURB, CENTER LINE OF STREETS OR CENTER LINE OF ALLEY ARE SHOWN BY CIRCLES ON PROFILES. AT ALL POINTS BETWEEN DESIGNATED POINTS THE GRADE SHALL BE ESTABLISHED SO AS TO CONFORM TO A STRAIGHT LINE DRAWN BETWEEN SAID DESIGNATED POINTS.
ELEVATIONS ARE IN FEET ABOVE U.S.C. & G.S. SEA LEVEL DATUM OF 1929.
THIS DRAWING AND THE DATA HEREON ARE HEREBY MADE A PART OF THE SPECIFICATIONS.
WORK SHALL BE CONSTRUCTED ACCORDING TO SPECIFICATIONS ON FILE IN THE OFFICE OF THE CITY ENGINEER AND SHALL BE PROSECUTED ONLY IN THE PRESENCE OF THE CITY ENGINEER.
BEFORE WORK CAN BE STARTED THE CONTRACTOR MUST OBTAIN A PERMIT TO EXCAVATE IN COUNTY STREETS FROM THE L.A. COUNTY ROAD DEPT. 108 W. 2ND ST. AND MAKE A DEPOSIT WITH THE COUNTY ENGINEER RM 324, 255 S. HIGHWAY 100 SUFFICIENT TO COVER THE COST OF CONSTRUCTION INSPECTION AND RECORD PLANS.
APPROVAL OF THIS PLAN BY THE CITY OF LAKEWOOD DOES NOT CONSTITUTE A REPRESENTATION AS TO THE ACCURACY OF THE LOCATION OF OR THE EXISTENCE OR NON-EXISTENCE OF ANY UNDERGROUND UTILITY, PIPE OR STRUCTURE WITHIN THE LIMITS OF THIS PROJECT.
CITY OF LAKEWOOD CALIFORNIA
APPROVED: *John A. Lambie* CITY ENGINEER
APPROVED: *A. M. Rawm* CHIEF ENGINEER OF COUNTY SANITATION DISTRICT NO. 3
BY *E. J. Collins* BY *A. M. Rawm*
CHECKED BY *E. J. Collins* 1-2-56
OFFICE OF CITY ENGINEER
REG. C. E. NO. 7840

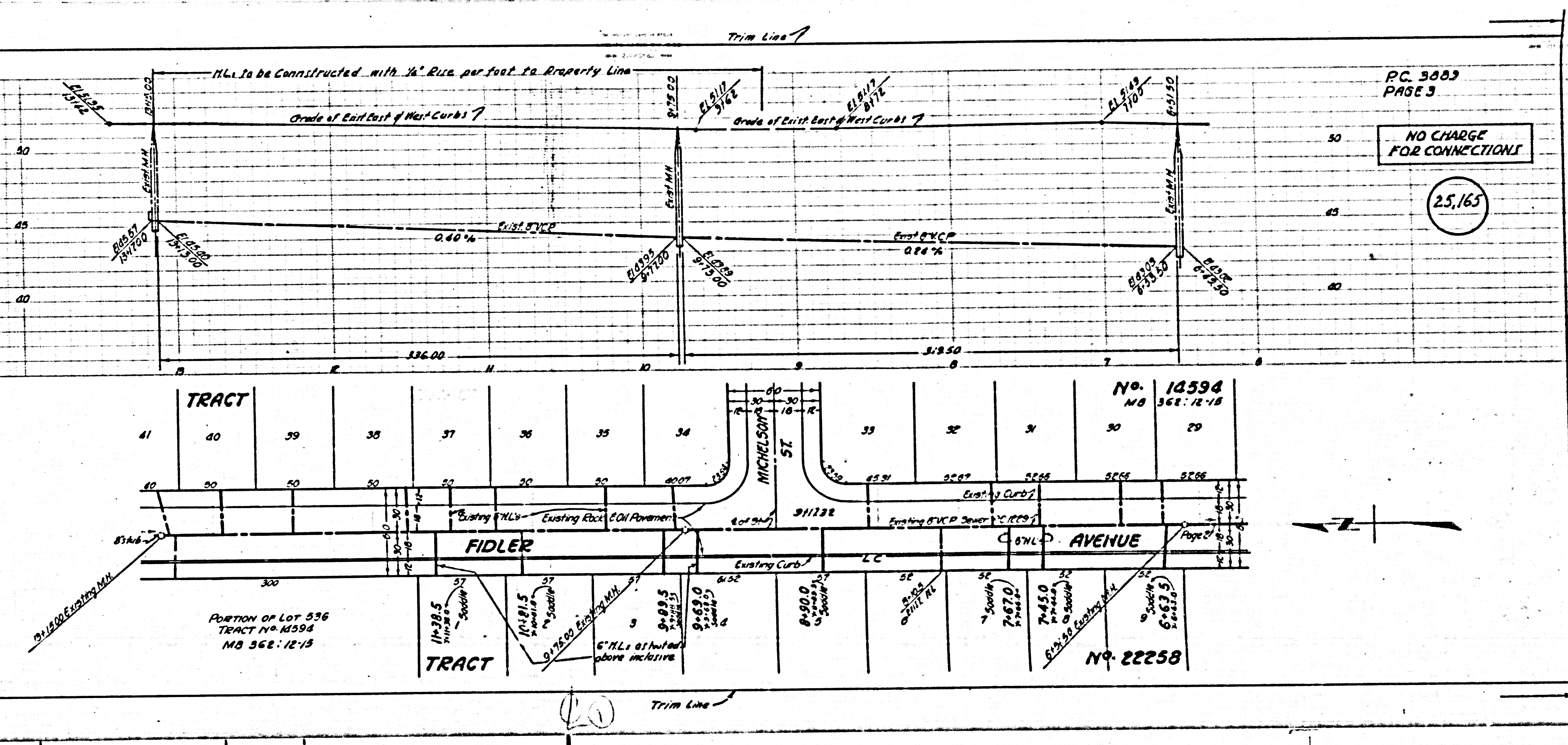
TRACT N° 22258

Rd.



PC 3889
PAGE 2
NO CHARGE
FOR CONNECTIONS
25.164

102



PC. 3803
PAGE 3

NO CHARGE
FOR CONNECTIONS

25,165

TRACT

41 40 39 38 37 36 35 34

PORTION OF LOT 536
TRACT NO. 18394
NB 362-12-13

FIDLER

TRACT

33 32 31 30 29

NO. 18394
NB 362-12-13

NO. 22258

EXISTING 12" R.I.P. WATER
EXISTING 6" R.I.P. SEWER
EXISTING 12" R.I.P. GAS

EXISTING CURB
EXISTING 6" R.I.P. SEWER

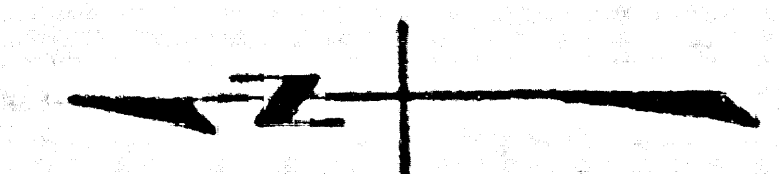
N.L. 12" R.I.P. WATER
N.L. 6" R.I.P. SEWER
N.L. 12" R.I.P. GAS

N.L. 12" R.I.P. WATER
N.L. 6" R.I.P. SEWER
N.L. 12" R.I.P. GAS

6" N.L. at half above inclusive

300

300



20