

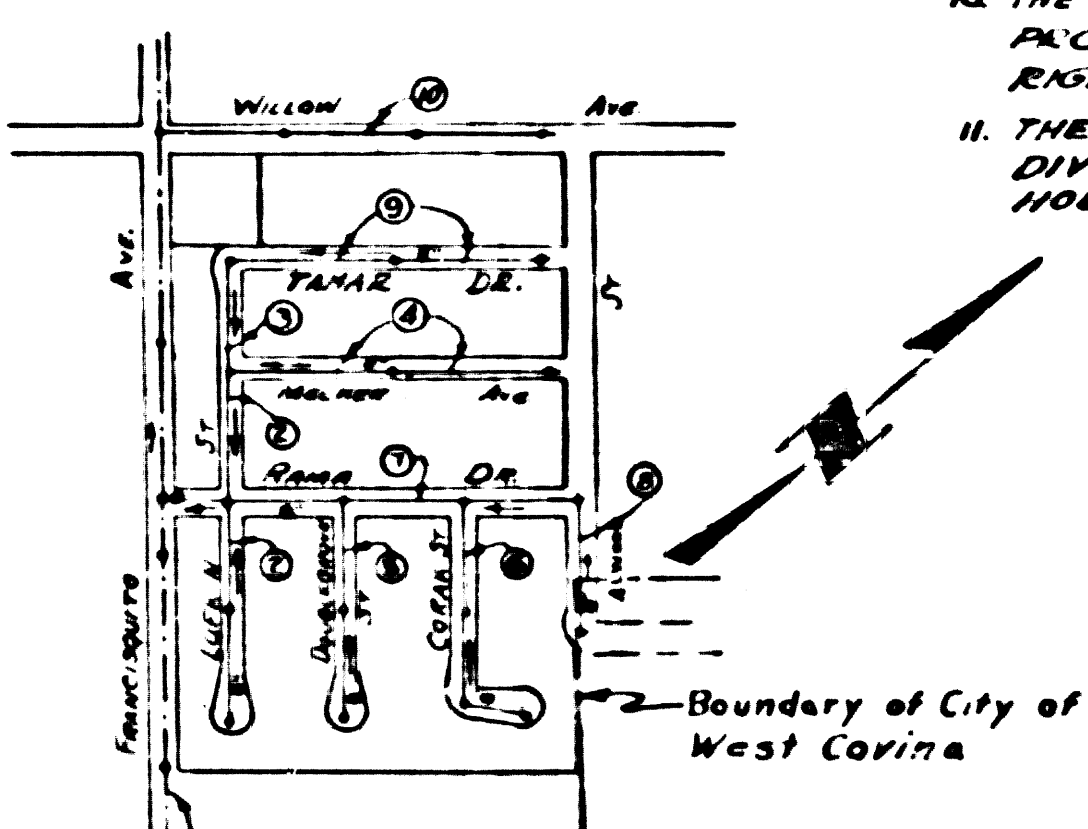
PUENTE BLDG. DIST. NO. 2

PROFILE ALIGNMENT AND GRADE OF P.C. 3896  
 SANITARY SEWERS PAGE 1  
 TO BE CONSTRUCTED IN  
**TRACT No 21016** (25,429)

PRIVATE CONTRACT NO. 3896  
 W.S. 46  
 5 SHEETS, 10 PAGES  
 SCALE: 1" = 40' HORIZ. 1" = 4' VERT.  
 JANUARY, 1956  
 PREPARED IN THE OFFICES OF  
**MANNING & DE TILLA**  
 by J. L. Manning REG. C. E. NO. 7676  
 FOR LEGEND SEE PLAN NO. S-A-64

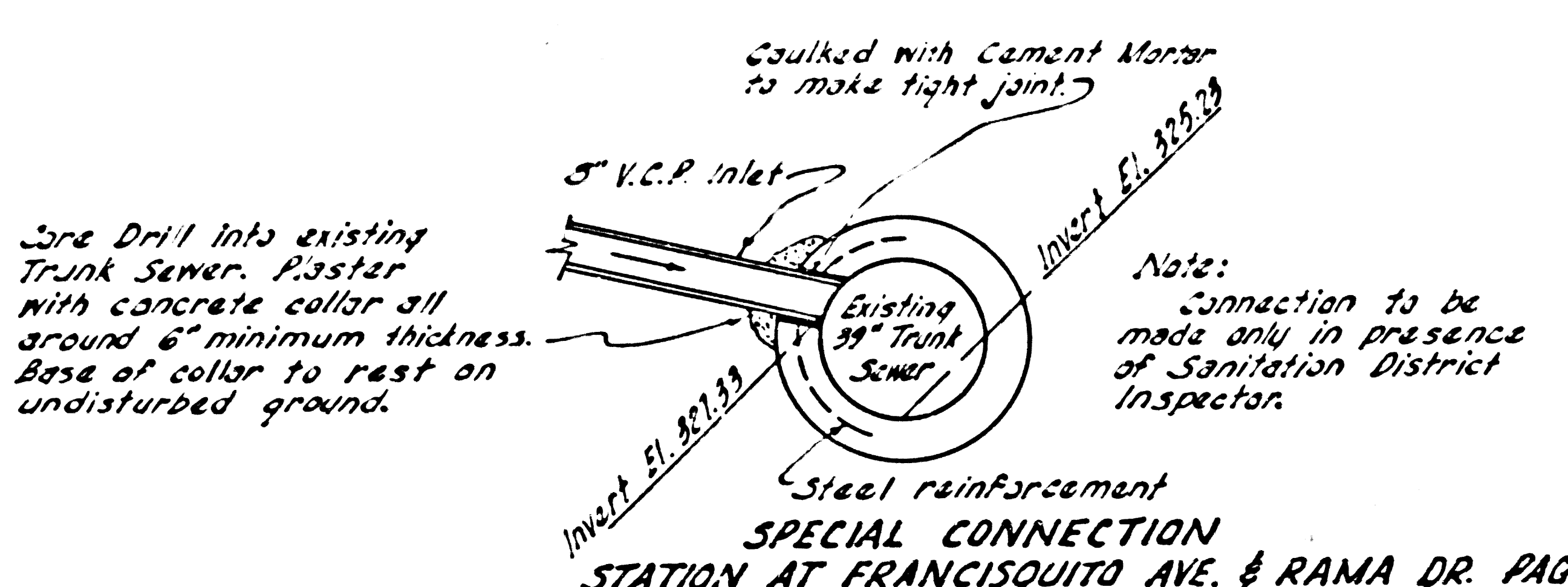
B.M. - Rd. Dept. S.G. 384 - El. 377.299  
 Spike and lead in Corner of Concrete  
 headwall S.W. Corner Willow Street  
 and Francisquito Avenue.

- NOTES**
- PROVIDE STAKES ON THE PROPERTY LINE OR PROPERTY LINES PRODUCED AT RIGHT ANGLES TO THE SEWER LINE AT THE CENTER LINE OF EACH MANHOLE.
  - NO REPRESENTATIVE OF THE COUNTY ENGINEER WILL SURVEY OR LAYOUT ANY PORTION OF THE WORK.
  - THE OWNER OR HIS AUTHORIZED REPRESENTATIVE SHALL FURNISH THE COUNTY ENGINEER WITH GRADE SHEETS AND STATIONING PLANS INDICATING ANY CHANGE IN LOCATION SHALL BE REQUESTED IN WRITING BY THE OWNER OR HIS REPRESENTATIVE.
  - NO REVISIONS SHALL BE MADE IN THESE PLANS WITHOUT THE APPROVAL OF THE COUNTY ENGINEER.
  - USE STANDARD MANHOLE FRAMES AND COVERS, S.A. 117, EXCEPT AS NOTED.
  - USE STANDARD STIFFNESS PIPE EXCEPT AS NOTED.
  - USE CEMENT MORTAR FOR ALL VITRIFIED CLAY PIPE JOINTS.
  - RESURFACE ALL TRENCH WITHIN PAVED AREA TO MEET L.A. COUNTY ROAD DEPT. OR CALIF. STATE HIGHWAY DEPT. REQUIREMENTS IN ACCORDANCE WITH PERMITS.
  - ENCASE FOUR FEET OF SEWER AT POINTS OF INTERFERENCE WITH POLES, S.A. 119.
  - HOUSE LATERALS TO BE CONSTRUCTED WITH INVERTS AT PROPERTY LINE 6" FEET BELOW CURB GRADE EXCEPT AS NOTED.
  - ALL STRUCTURES SHALL BE BUILT WITH STRUCTURES, S.A. 116, EXCEPT AS NOTED.
  - FOR ALUMINUM BRASS TEST USE FORMULA NO. 1, S.P.C.S., SEC. 54.
  - MANHOLE TOPS IN UNIMPROVED RIGHTS-OF-WAY TO BE 6" ABOVE FINISHED GRADE.
  - THE PRIVATE ENGINEER IS TO FURNISH THE HOUSE LATERAL DEPTH AT THE PROPERTY LINE BELOW THE ELEVATION OF THE CENTERLINE OF SEWER RIGHT-OF-WAY FOR EACH HOUSE LATERAL, ON THE GRADE SHEET.
  - THE CONTRACTOR SHALL NOTIFY THE CONSTRUCTION AND SPONDRAIN DIVISION BY TELEPHONE, WADSWORTH 9-7487, EXT. 352, AT LEAST 48 HOURS BEFORE STARTING ANY WORK UNDER THIS CONTRACT.



NO CHARGE FOR CONNECTIONS

NOTE: Figures in circles indicate page numbers.



**NOTE**

GRADES TO WHICH THIS IMPROVEMENT IS TO BE CONSTRUCTED ARE SHOWN ON PLANS AND PROFILES. GRADE POINTS FOR TOP OF CURBS, CENTER LINE OF STREETS, OR CENTER LINE OF ALLEYS ARE SHOWN BY CIRCLES ON PROFILES AT ALL POINTS BETWEEN DESIGNATED POINTS. THE GRADE SHALL BE ESTABLISHED SO AS TO CONFORM TO A STRAIGHT LINE DRAWN BETWEEN SAID DESIGNATED POINTS.

ELEVATIONS ARE IN FEET ABOVE U.S.C. & G.S. SEA LEVEL DATUM AS OF 1929.

THIS DRAWING AND THE DATA HEREON ARE HEREBY MADE A PART OF THE SPECIFICATIONS.

WORK SHALL BE CONSTRUCTED ACCORDING TO SPECIFICATIONS ON FILE IN THE OFFICE OF THE COUNTY ENGINEER AND SHALL BE PROSECUTED ONLY IN THE PRESENCE OF THE COUNTY ENGINEER.

BEFORE WORK CAN BE STARTED, THE CONTRACTOR MUST OBTAIN A PERMIT TO EXCAVATE IN COUNTY STREETS FROM THE L.A. COUNTY ROAD DEPT., 100 W. 2ND ST. AND MAKE A DEPOSIT WITH THE COUNTY ENGINEER ROOM 324 SAN AMERICAN BUILDING, 324 1/2 BROADWAY SUFFICIENT TO COVER THE COST OF CONSTRUCTION, INSPECTION AND RECORD PLANS.

APPROVAL OF THIS PLAN BY THE COUNTY OF LOS ANGELES DOES NOT CONSTITUTE A REPRESENTATION AS TO THE ACCURACY OF THE LOCATION OF OR THE EXISTENCE OR NON-EXISTENCE OF ANY UNDERGROUND UTILITY PIPE, OR STRUCTURE WITHIN THE LIMITS OF THIS PROJECT. THIS NOTE APPLIES TO ALL PAGES.

IF WORK IS TO BE DONE IN A STATE HIGHWAY, A PERMIT MUST BE OBTAINED FROM THE STATE OF CALIFORNIA, DIVISION OF HIGHWAYS, 120 SOUTH SPRING STREET.

COUNTY OF LOS ANGELES, CALIFORNIA

APPROVED, JOHN A. LAMBIE, COUNTY ENGINEER  
 APPROVED, A. M. RAWN, CHIEF ENGINEER  
 (S.E. 1522)

BY *J. L. Manning* SANITATION ENGINEER  
 BY *A. M. Rawn* OFFICE ENGINEER

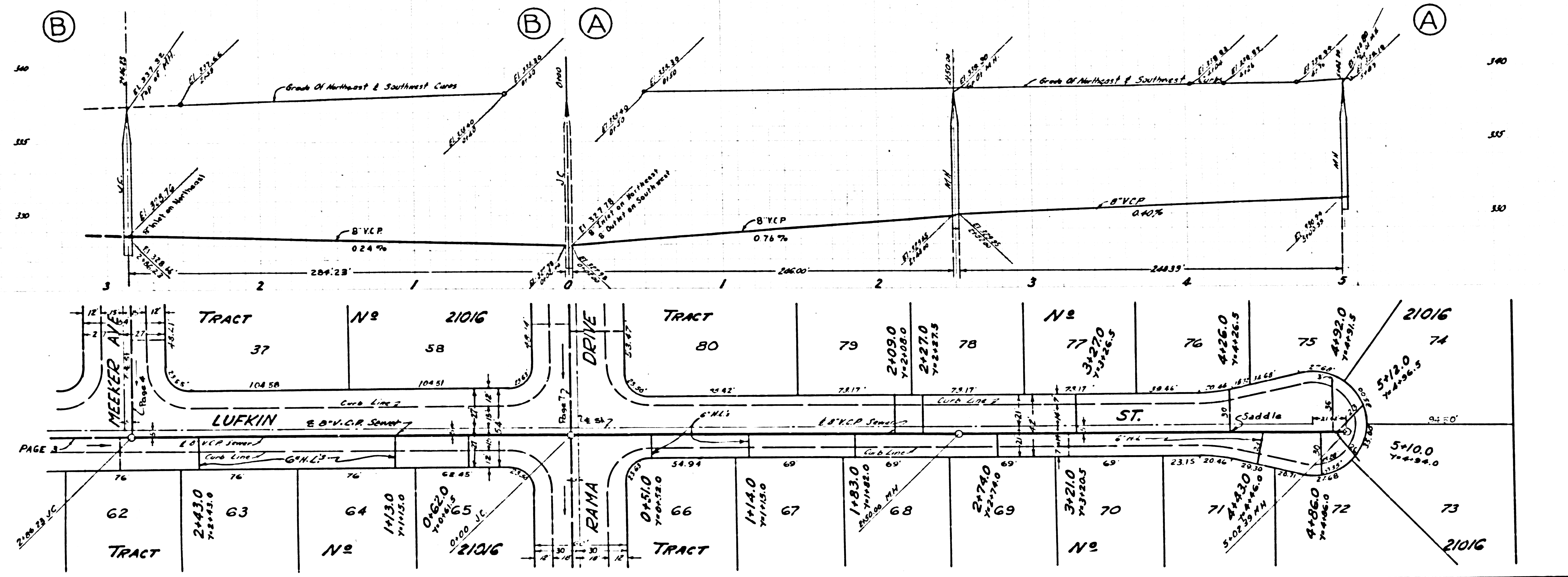
CHECKED BY *R. E. Poutow* 2-16-57  
 OFFICE OF COUNTY ENGINEER, REG. C. E. NO. 9406

APPROVED *R. E. Poutow* 3/20/57  
 CITY ENGINEER, CITY OF WEST COVINA

P.C. 3896 PAGE 2

(25,430)

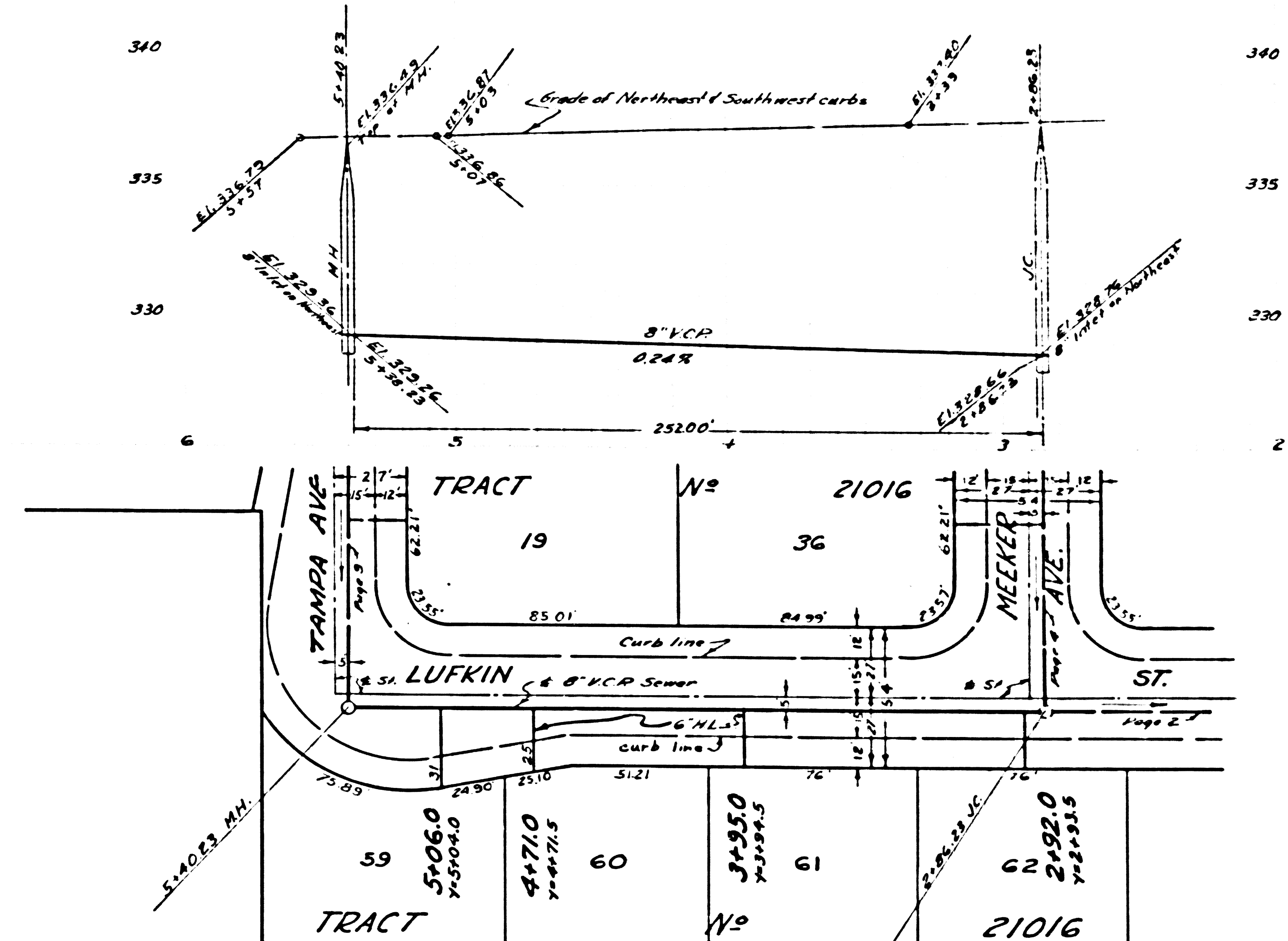
NO CHARGE FOR CONNECTIONS



BC 3896  
 TRACT No 21016

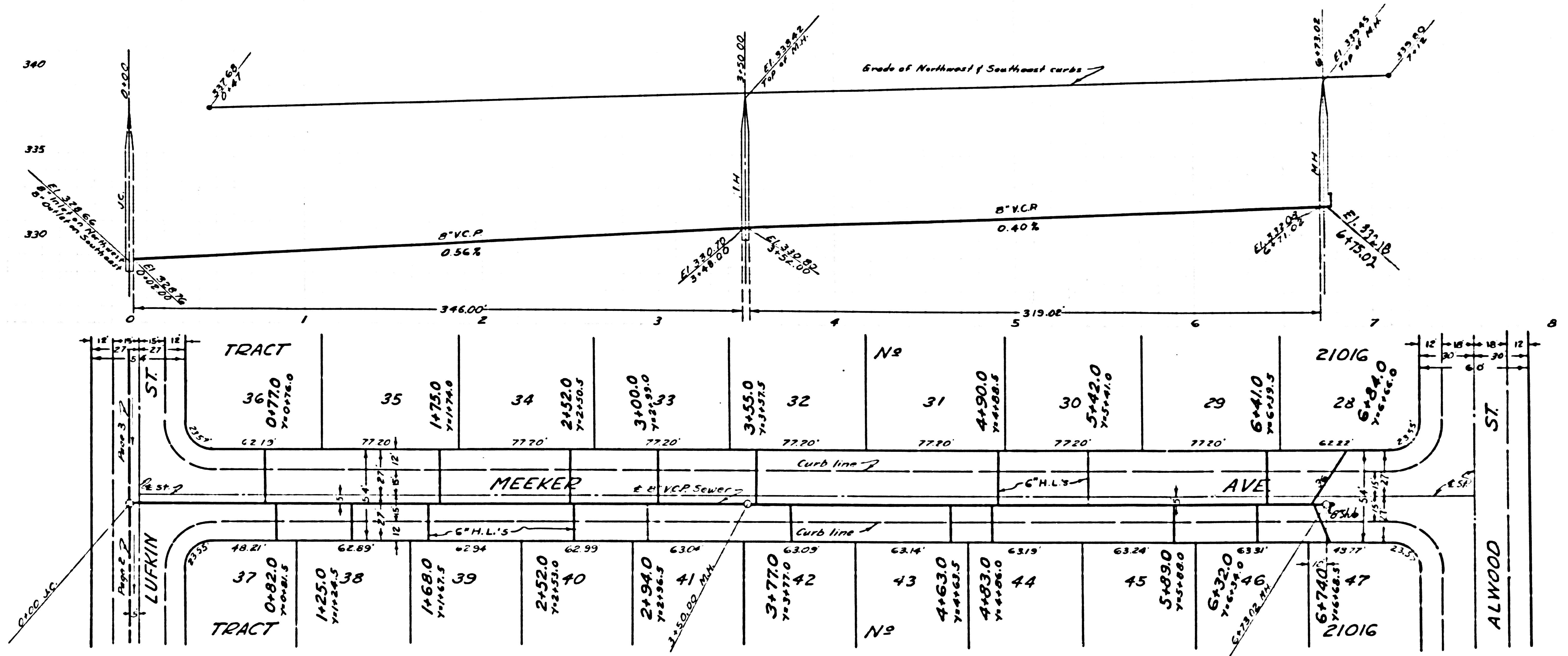
NO CHARGE FOR CONNECTIONS

25,431



NO CHARGE FOR CONNECTIONS

25,432

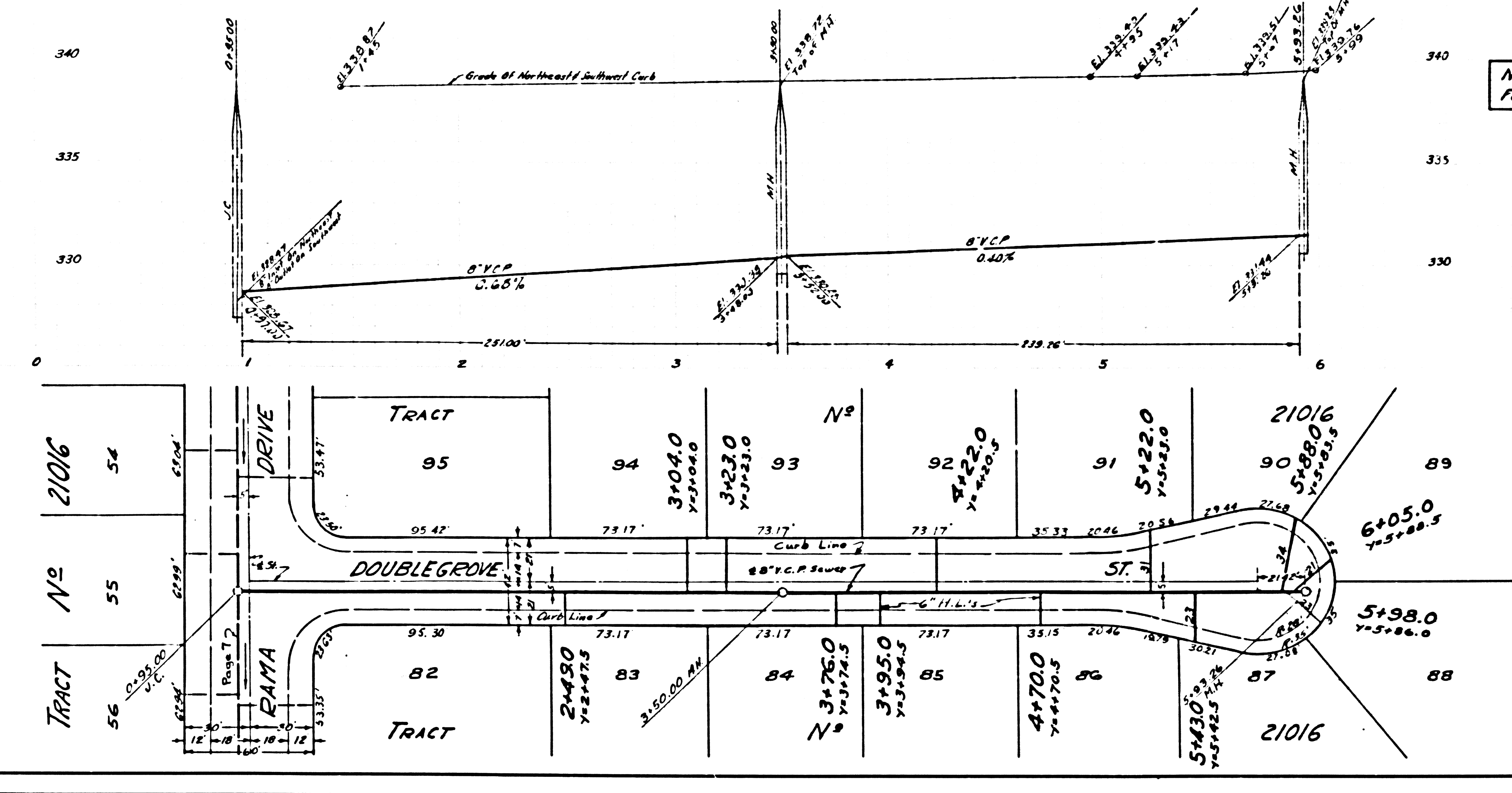


PC 3896 TRACT No 21016

2

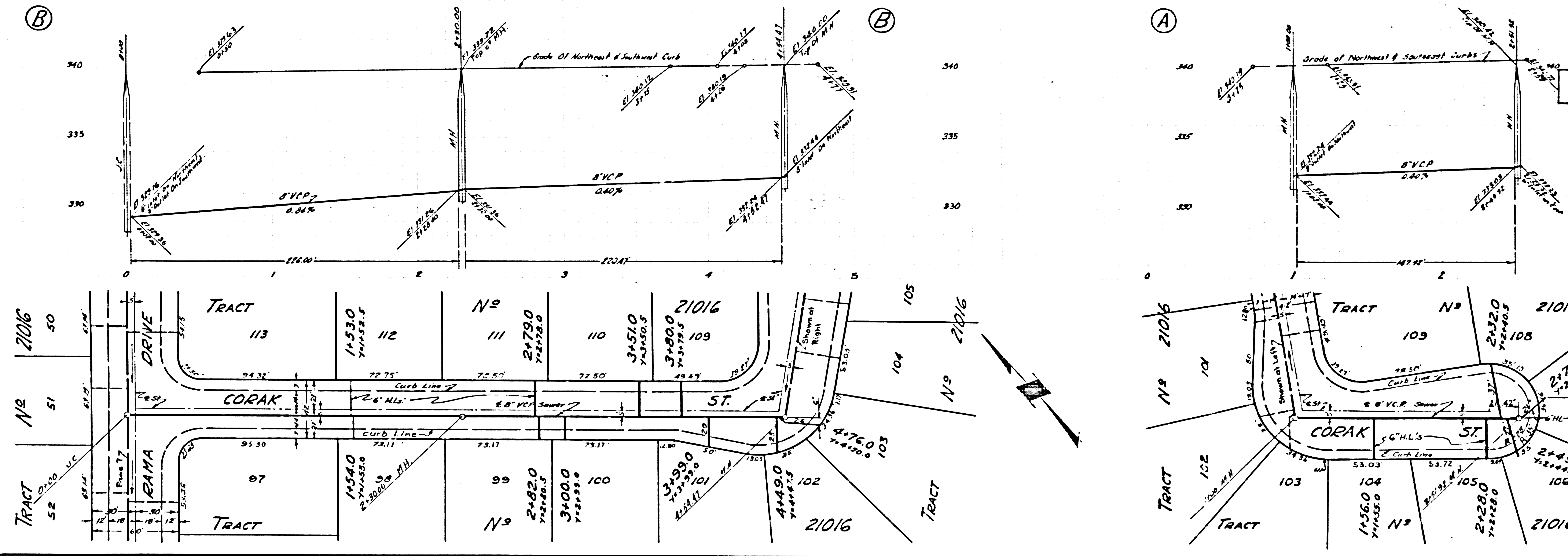
25,433

NO CHARGE FOR CONNECTIONS

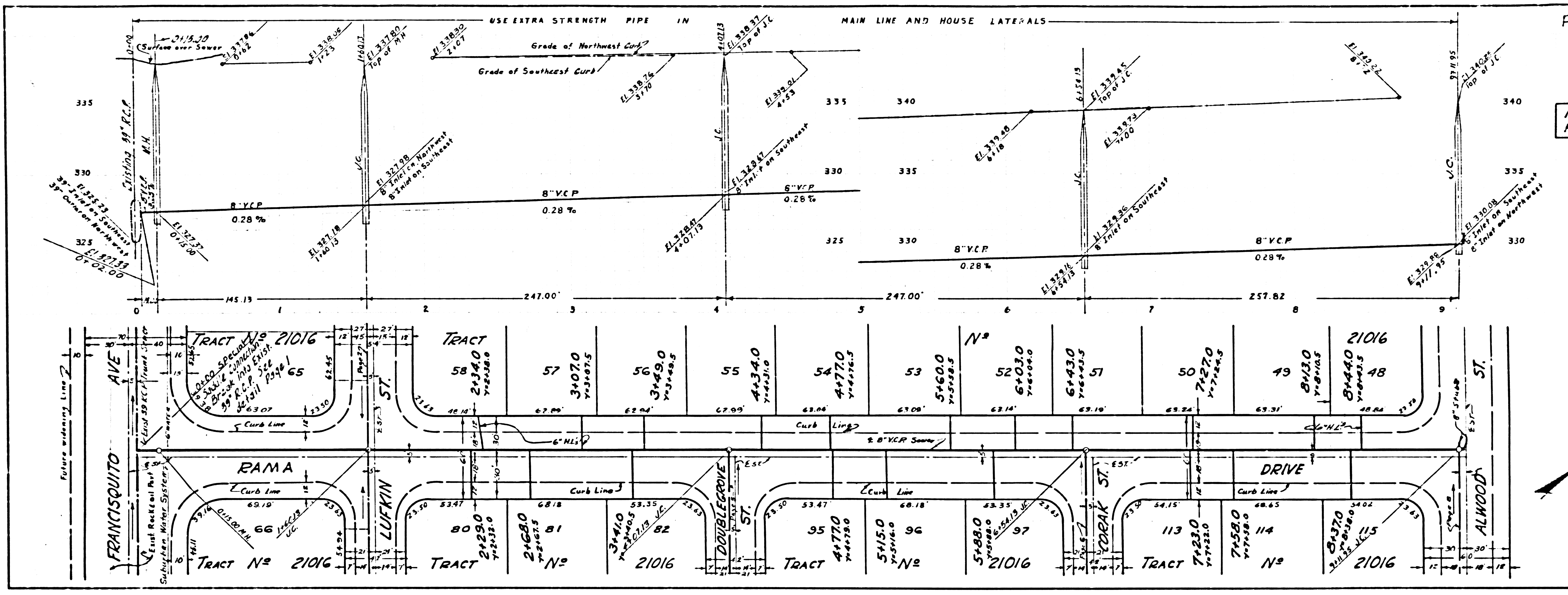


25,434

NO CHARGE FOR CONNECTIONS

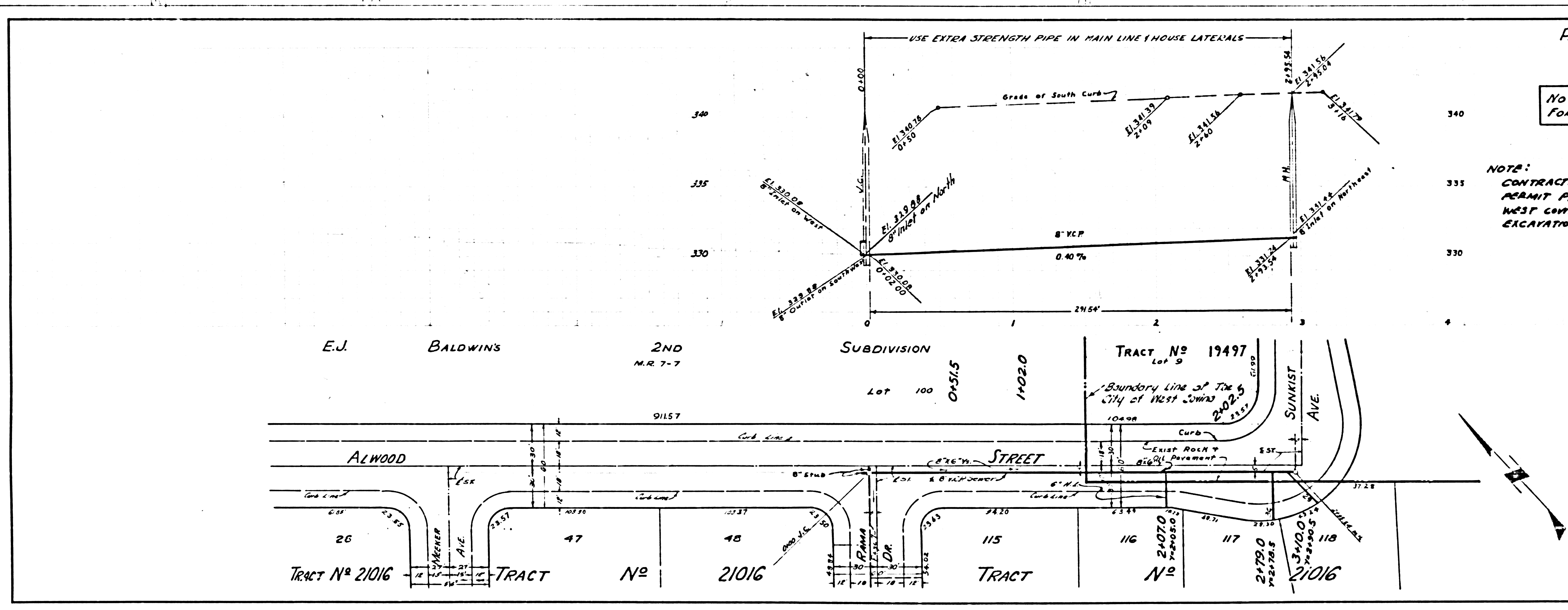


P.C. 3896 TRACT NO. 21016



PC 3896 PAGE 7  
 25435  
 NO CHARGE FOR CONNECTIONS

50' 38\"/>

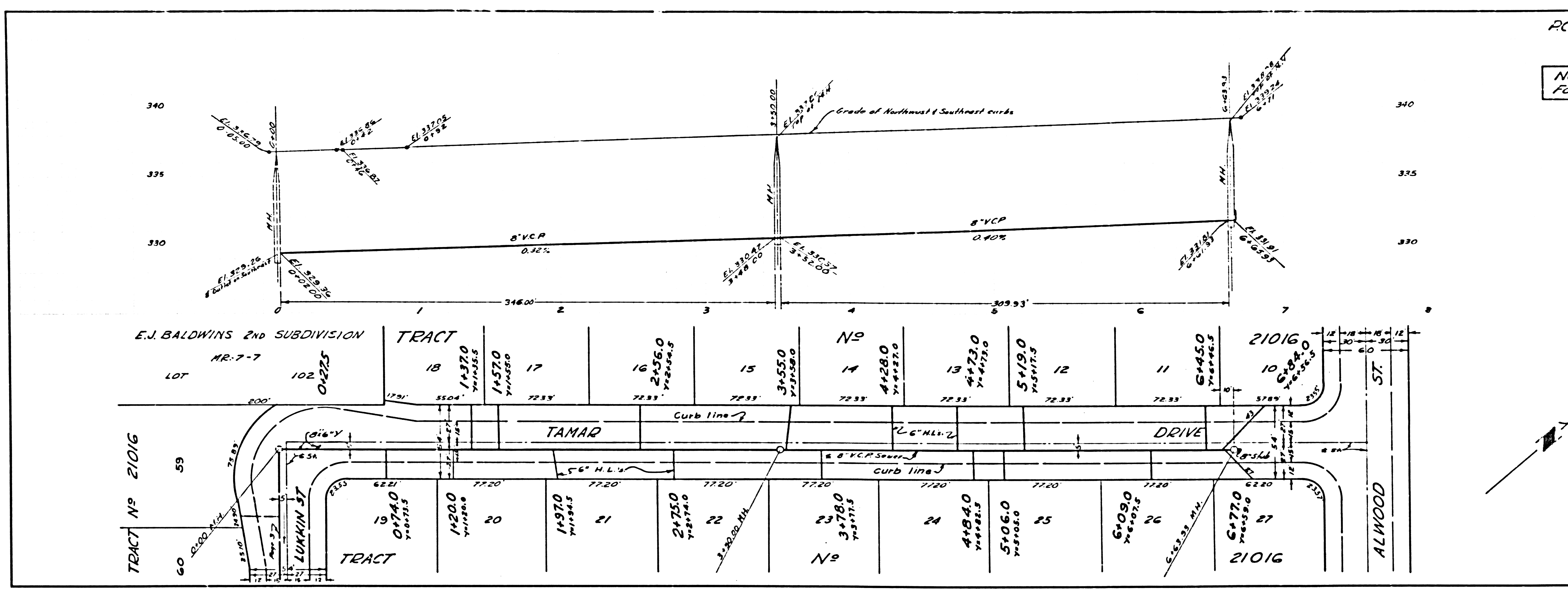


PG 3896 PAGE 8  
 25436  
 NO CHARGE FOR CONNECTIONS

NOTE:  
 CONTRACTOR TO OBTAIN PERMIT FROM CITY OF WEST COVINA BEFORE EXCAVATION IN CITY STREETS

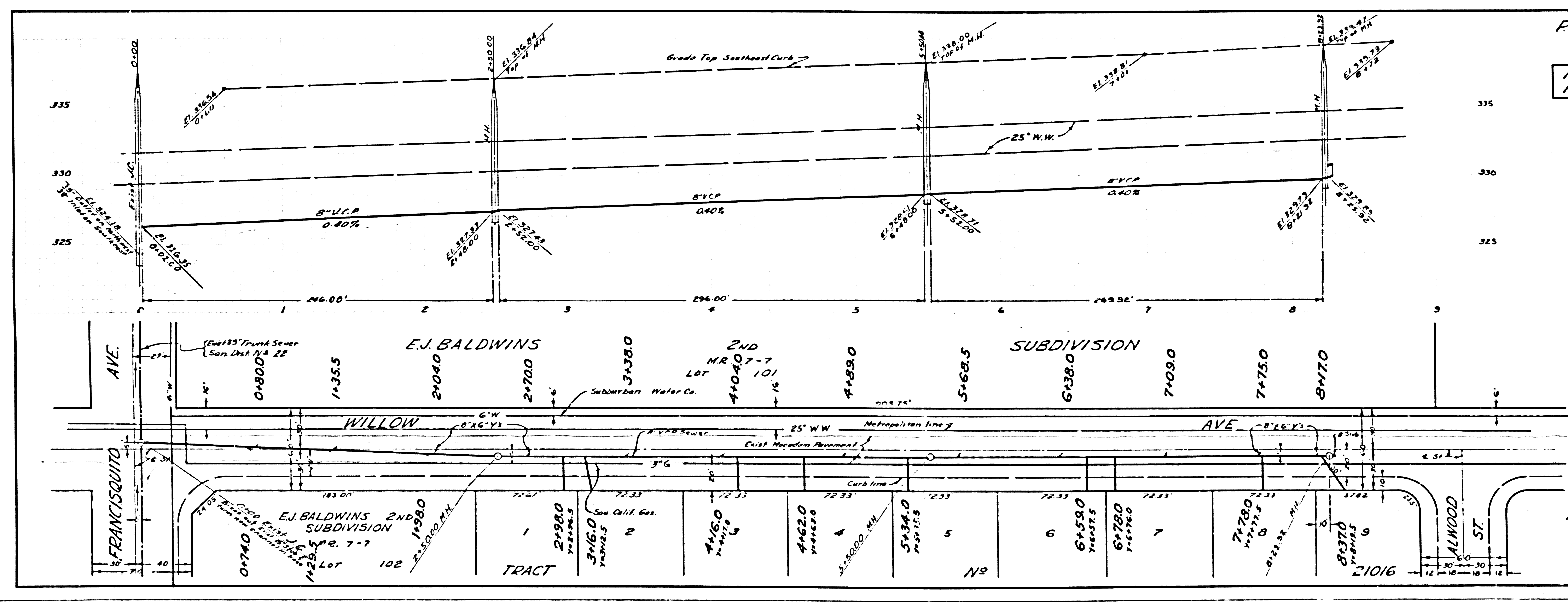
NO CHARGE FOR CONNECTIONS

25,437



NO CHARGE FOR CONNECTIONS

25,438



5

PC 3896 PAGE 9

PC 3896 PAGE 10