

B.M. Rd Dept SY 961 Elev. 77.865
 L & T. near Ss edge of cone drive 55.1'
 West of Woodruff Ave. Driveway to
 house N# 15509.

BELLFLOWER BLDG. DIST. NO. 4

- NOTES
- PROVIDE STAKES ON THE PROPERTY LINE OR PROPERTY LINES PRODUCED AT RIGHT ANGLES TO THE SEWER LINE AT THE CENTER LINE OF EACH MANHOLE.
 - NO REPRESENTATIVE OF THE COUNTY ENGINEER WILL SURVEY OR LAYOUT ANY PORTION OF THE WORK.
 - THE OWNER OR HIS AUTHORIZED REPRESENTATIVE SHALL FURNISH THE COUNTY ENGINEER WITH GRADE SHEETS AND STATION FOR ALL HOUSE LATERALS AND Y BRANCHES AND SHALL PROVIDE STAKES FOR THEM AT THEIR PROPER LOCATIONS WITH STATION AND PLAINLY MARKED. ANY CHANGE IN LOCATION SHALL BE REQUESTED IN WRITING BY THE OWNER OR HIS REPRESENTATIVE.
 - NO REVISIONS SHALL BE MADE IN THESE PLANS WITHOUT THE APPROVAL OF THE COUNTY ENGINEER.
 - USE STANDARD MANHOLE FRAMES AND COVERS, S.A. 117.
 - USE STANDARD STRENGTH PIPE EXCEPT AS NOTED.
 - USE CEMENT MORTAR FOR ALL WITHEPPED CLAY PIPE JOINTS.
 - RESURFACE ALL TRENCH WITHIN PAVED AREA TO MEET L. A. COUNTY ROAD DEPT. OR CALIF. STATE HIGHWAY DEPT. REQUIREMENTS IN ACCORDANCE WITH PERMITS.
 - INCLUDE FOUR FEET OF SEWER AT POINTS OF INTERFERENCE WITH POLES, S.A. 118.
 - HOUSE LATERAL TO BE CONSTRUCTED WITHIN EXISTING OR PROPOSED SIDEWALK OR DRIVEWAY OR HIGHWAY.
 - ALL STRUCTURES SHALL BE BRICK SEWER STRUCTURE, S.A. 104.
 - FOR ALLOWABLE LEAKAGE TEST USE FORMULA NO. _____ SPEC. SEC. D.
 - MANHOLE TOPS TO UNIMPROVED SURF. OR 10' TO 15' OF UNIMPROVED GRADE.

PROFILE ALIGNMENT AND GRADE OF
SANITARY SEWERS
 TO BE CONSTRUCTED IN
WOODRUFF AVE (22,590)

PRIVATE CONTRACT NO. 3898
 W.S. 33 (2)

1 SHEET OF 2 PAGES
 SCALE: 1" = 4' HORIZ. 1" = 2' VERT.
 FEB. 1956
 PREPARED IN THE OFFICES OF
MANNING & DETILLA
 REG. C. E. NO. 7676

FOR LEGEND SEE PLAN NO. S-A-64

NOTE:
 GRADES TO WHICH THE IMPROVEMENT IS TO BE CONSTRUCTED ARE SHOWN ON 1"=4' AND PROFILES GRADE POINTS FOR TOP OF CURBS, CENTER LINE OF STREETS, OR CENTER LINE OF ALLEYS ARE SHOWN BY CIRCLES ON PROFILE AT ALL POINTS BETWEEN DESIGNATED POINTS THE GRADE SHALL BE ESTABLISHED SO AS TO CONFORM TO A STRAIGHT LINE DRAWN BETWEEN SAID DESIGNATED POINTS.
 ELEVATIONS ARE IN FEET ABOVE U.S.C. & G.S. SEA LEVEL UNLESS OTHERWISE NOTED.
 THIS DRAWING AND THE DATA HEREON ARE HEREBY MADE A PART OF THE SPECIFICATIONS.
 WORK SHALL BE CONSTRUCTED ACCORDING TO SPECIFICATIONS ON FILE IN THE OFFICE OF THE COUNTY ENGINEER AND SHALL BE INSPECTED ONLY IN THE PRESENCE OF THE COUNTY ENGINEER.
 BEFORE WORK CAN BE STARTED THE CONTRACTOR MUST OBTAIN A PERMIT TO EXCAVATE IN COUNTY STREETS FROM THE L. A. COUNTY ROAD DEPT. FOR 10' MIN. ST. AND MAKE A DEPOSIT WITH THE COUNTY ENGINEER ROOM 1204 PARK AVENUE SAN FRANCISCO 323 SO. BROADWAY SUFFICIENT TO COVER THE COST OF CONSTRUCTION INSPECTION AND RECORD PLANS.
 APPROVAL OF THIS PLAN BY THE COUNTY OF LOS ANGELES DOES NOT CONSTITUTE A REPRESENTATION AS TO THE ACCURACY OF THE LOCATION OF OR THE EXISTENCE OR NON-EXISTENCE OF ANY UNDERGROUND UTILITY PIPE, OR STRUCTURE WITHIN THE LIMITS OF THIS PROJECT THE NOTE APPLIES TO ALL PAGES.
 IF WORK IS TO BE DONE IN A STATE HIGHWAY, A PERMIT MUST BE OBTAINED FROM THE STATE OF CALIFORNIA, DIVISION OF HIGHWAYS, 120 SOUTH SPRING STREET.

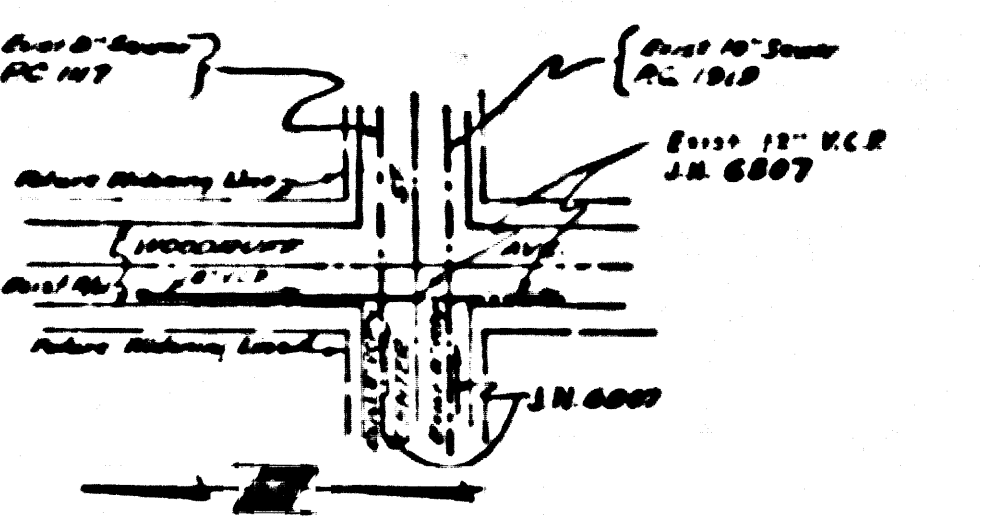
COUNTY OF LOS ANGELES, CALIFORNIA

APPROVED, JOHN A. LAMBE, COUNTY ENGINEER
 APPROVED, A. M. RAWN, CHIEF ENGINEER

BY *G.P. Collins* SANITATION ENGINEER
 BY *A. Posthumus* OFFICE ENGINEER

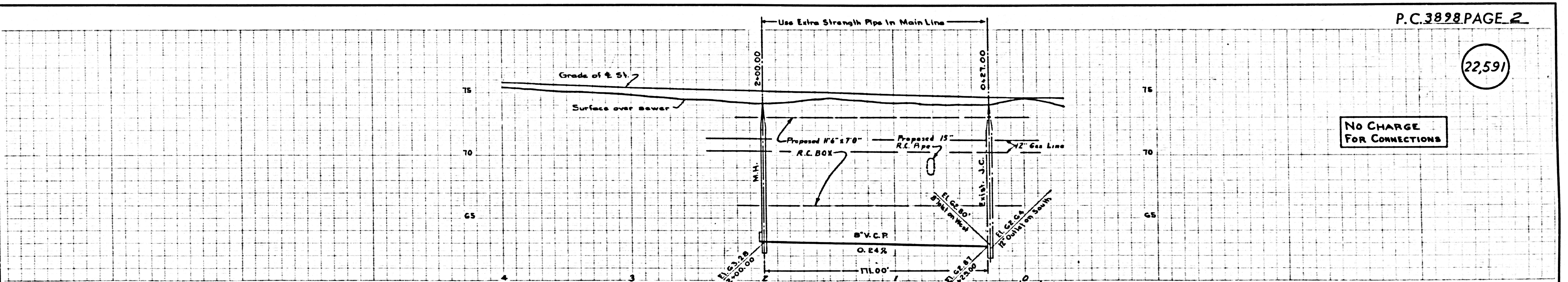
CHECKED BY *R.K. Decker* 3-16-56
 OFFICE OF COUNTY ENGINEER, REG. C. E. NO. 3406

NO CHARGE
 FOR CONNECTIONS
R.W.D. 3-15-56

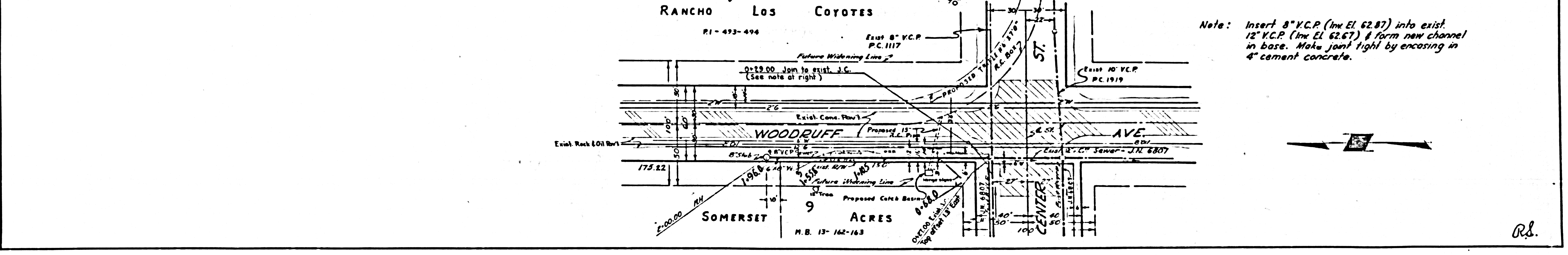


INDEX MAP
 P.C. 3898
 Scale: 1" = 200'

Checked 5-3-56 M. L. ...



NO CHARGE
 FOR CONNECTIONS



Note: Insert 8" V.C.P. (Inv. El. 62.87) into exist. 12" V.C.P. (Inv. El. 62.67) & form new channel in base. Make joint tight by encasing in 4" cement concrete.

R.S.

WOODRUFF AVE EXTENSION

8885.00

P.C. 3898