

NOTE:  
 NO PERMITS ARE TO BE ISSUED  
 FROM STA. 0+00 TO STA. 6+26±.  
 THIS IS A PRIVATE SEWER. CALL  
 MAIN OFFICE, MA 9-4747, EXT. 465.

B.M. NO. 87-1884, ELEV. 148.083  
 ROSEHEAD BLVD. 48' S. OF N.E. OF SHADE LANE  
 TOP OF FLAT-HEAD BOLT, SET IN E. CURB

WHITTIER BLDG. DIST. NO. 11

- NOTES
- PROVIDE STAKES ON THE PROPERTY LINE OR PROPERTY LINES PRODUCED AT RIGHT ANGLES TO THE SEWER LINE AT THE CENTER LINE OF EACH MANHOLE.
  - NO REPRESENTATIVE OF THE COUNTY ENGINEER WILL SURVEY OR LAYOUT ANY PORTION OF THE WORK.
  - THE OWNER OR HIS AUTHORIZED REPRESENTATIVE SHALL FURNISH THE COUNTY ENGINEER WITH GRADE SHEETS AND STATIONING FOR ALL HOUSE LATERALS AND BRANCHES AND SHALL PROVIDE STAKES FOR THEM AT THEIR PROPER LOCATIONS WITH STATIONING PLAINLY MARKED ANY CHANGE IN LOCATION SHALL BE REQUESTED IN WRITING BY THE OWNER OR HIS REPRESENTATIVE.
  - NO REVISIONS SHALL BE MADE IN THESE PLANS WITHOUT THE APPROVAL OF THE COUNTY ENGINEER.
  - USE STANDARD MANHOLE FRAMES AND COVERS, S.A.-117, EXCEPT AS NOTED.
  - USE STANDARD STRENGTH PIPE EXCEPT AS NOTED.
  - USE CEMENT MORTAR FOR ALL VITRIFIED CLAY PIPE JOINTS.
  - RESURFACE ALL TRENCH WITHIN PAVED AREA TO MEET L.A. COUNTY ROAD DEPT. OR CALIF. STATE HIGHWAY DEPT. SPECIFICATIONS IN ACCORDANCE WITH POINTS.
  - ENCASE FOUR FEET OF SEWER AT POINTS OF INTERFERENCE WITH POLES, S.A.-119.
  - HOUSE LATERALS TO BE CONSTRUCTED WITH 1/4" RISE PER FOOT.
  - ALL STRUCTURES SHALL BE BUILT SEWER STRUCTURES, S.A.-116, EXCEPT AS NOTED.
  - FOR ALLOWABLE LEAKAGE TEST USE FORMULA NO. 1, S.P.C.S. SPEC. SEC. III.
  - MANHOLE TOPS TO BE LEVEL WITH FINISHED SURFACE.

PROFILE ALIGNMENT AND GRADE OF P.C. 3899  
 SANITARY SEWERS PAGE 1  
 TO BE CONSTRUCTED

SOUTHERN CALIFORNIA GAS COMPANY  
 RIVERA

PRIVATE CONTRACT NO. 3899

W.S. 36  
 2 SHEETS, 3 PAGES (23,460)  
 SCALE: HORIZ. 1" = 40' VERT. 1" = 4'  
 FEB., 1956

PEREIRA & LUCKMAN  
 CIVIL ENGINEERS  
 1111 W. 10th St. LOS ANGELES, CALIF.  
 REG. C. E. NO. 8252

FOR LEGEND SEE PLAN NO. S-A-64

NOTE: GRADES TO WHICH THIS IMPROVEMENT IS TO BE CONSTRUCTED ARE SHOWN ON PLANS AND PROFILES. GRADE POINTS FOR TOP OF CURB, CENTER LINE OF STREETS, OR CENTER LINE OF ALLEYS ARE SHOWN BY CIRCLES ON PROFILES AT ALL POINTS BETWEEN DESIGNATED POINTS. THE GRADE SHALL BE ESTABLISHED SO AS TO COMFORM TO A STRAIGHT LINE DRAWN BETWEEN SAID DESIGNATED POINTS.

ELEVATIONS ARE IN FEET ABOVE U.S.C. & G.S. MEAN SEA LEVEL DATUM OF 1929.

THIS DRAWING AND THE DATA HEREON ARE HEREBY MADE A PART OF THE SPECIFICATIONS.

WORK SHALL BE CONSTRUCTED ACCORDING TO SPECIFICATIONS ON FILE IN THE OFFICE OF THE COUNTY ENGINEER AND SHALL BE PROSECUTED ONLY IN THE PRESENCE OF THE COUNTY ENGINEER.

WHEN WORK CAN BE STARTED, THE CONTRACTOR MUST OBTAIN A PERMIT TO EXCAVATE IN COUNTY STREETS FROM THE L.A. COUNTY ROAD DEPT. THE PERMIT SHALL BE OBTAINED FROM THE COUNTY ENGINEER, ROOM 328 FARM AMERICAN BUILDING, 235 SO. HOUGHTON STREET, TO COVER THE COST OF CONSTRUCTION INSPECTION AND RECORD PLANS.

APPROVAL OF THIS PLAN BY THE COUNTY OF LOS ANGELES DOES NOT CONSTITUTE A REPRESENTATION AS TO THE ACCURACY OF THE LOCATION OR OF THE EXISTENCE OR NON-EXISTENCE OF ANY UNDERGROUND UTILITY PIPE, OR STRUCTURE WITHIN THE LIMITS OF THIS PROJECT. THIS NOTE APPLIES TO ALL PAGES.

IF WORK IS TO BE DONE IN A STATE HIGHWAY, A PERMIT MUST BE OBTAINED FROM THE STATE OF CALIFORNIA, DIVISION OF HIGHWAYS, 138 SOUTH SPRING STREET.

COUNTY OF LOS ANGELES, CALIFORNIA

APPROVED, JOHN A. LAMBE, COUNTY ENGINEER

APPROVED, A. M. RAWLIN, CHIEF ENGINEER

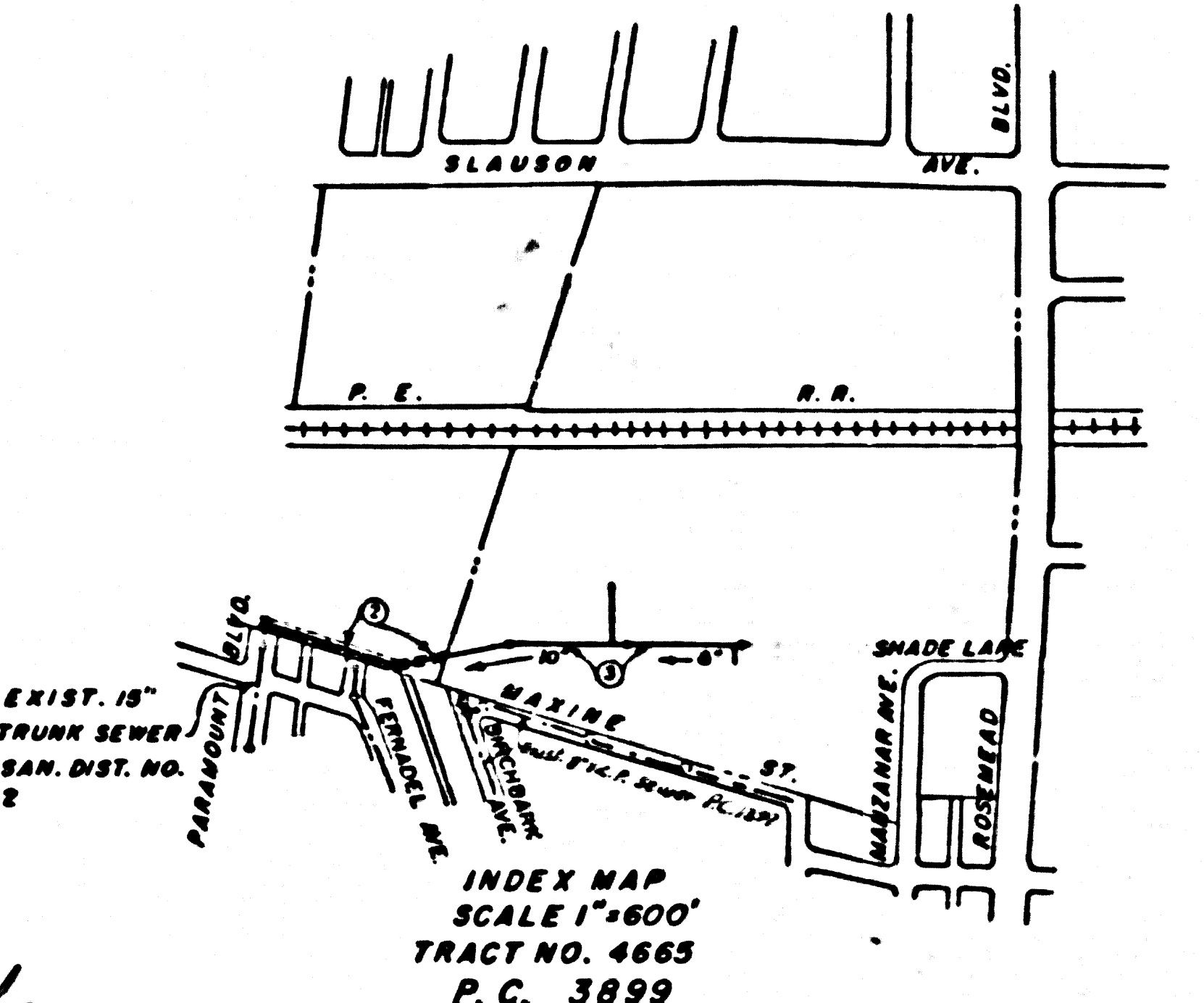
BY A. P. Collins SANITATION ENGINEER

BY J. J. Matthews OFFICE ENGINEER

CHECKED BY R. E. Fisher 3-26-56

OFFICE OF COUNTY ENGINEER, 808 C. E. NO. 7860

Approved by  
 Industrial Waste Division  
 by Arthur Liebert date 3/20/56



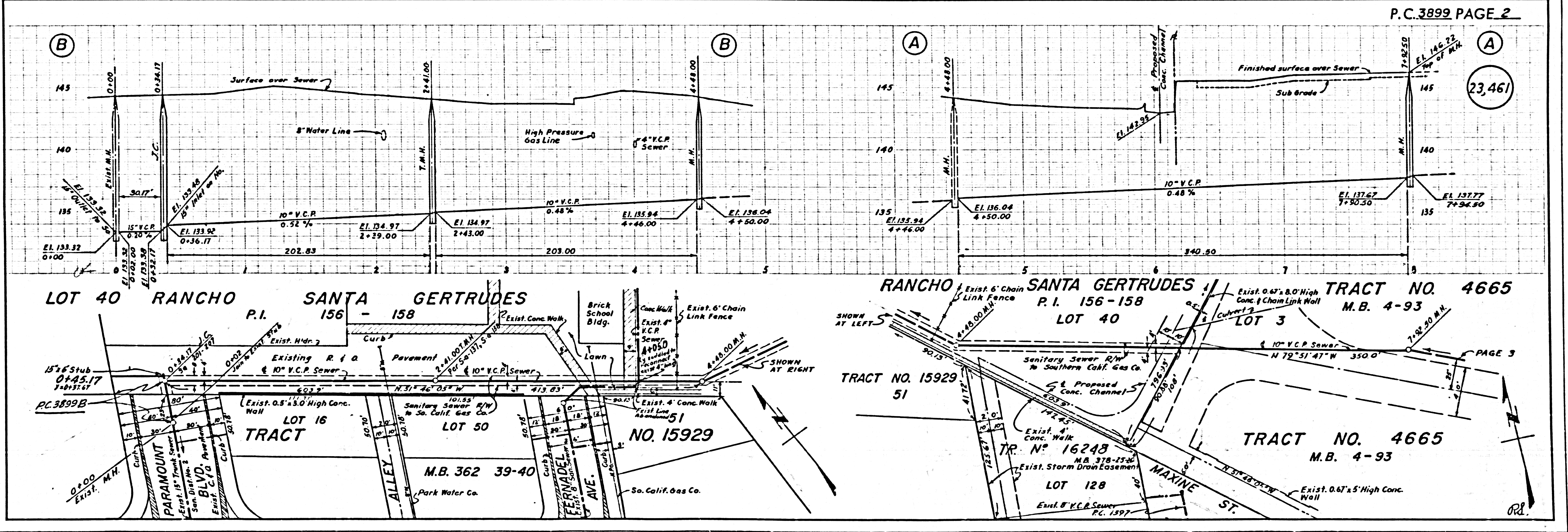
Revised 11-20-56 W. H. W.

SO. CALIF. GAS CO.

P.C. 3899

P.C. 3899

P.C. 3899



P.C. 3899 PAGE 2

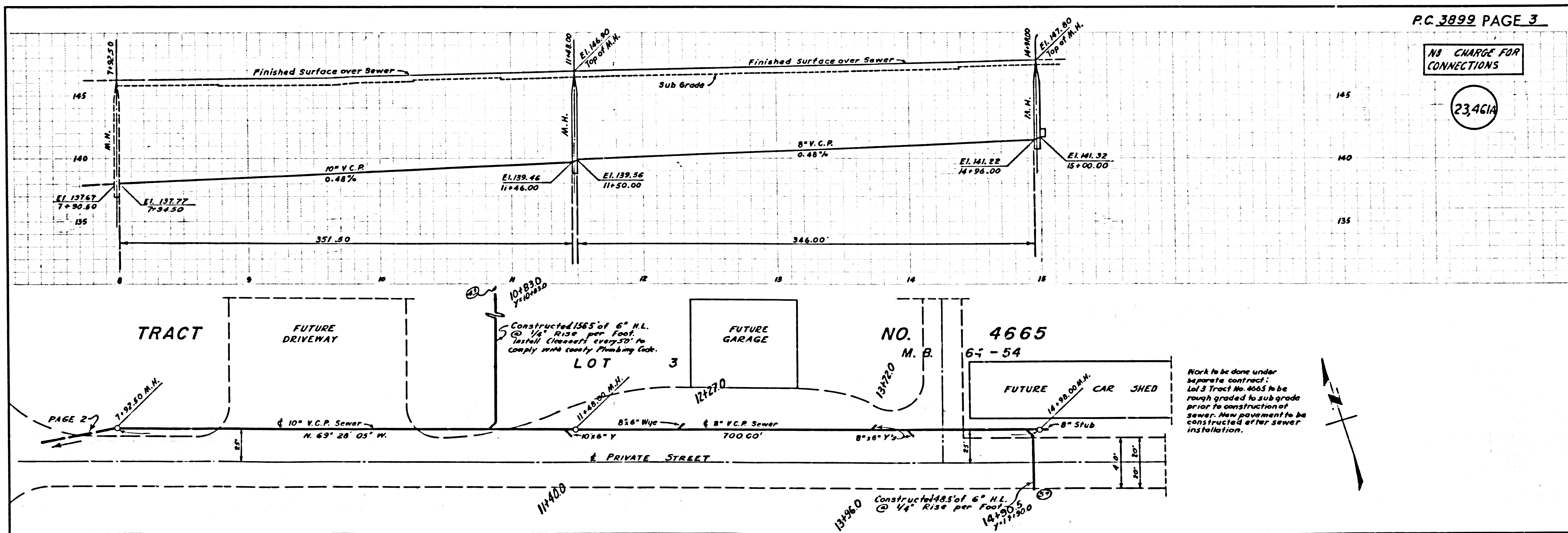
(23,461)

11-20-56

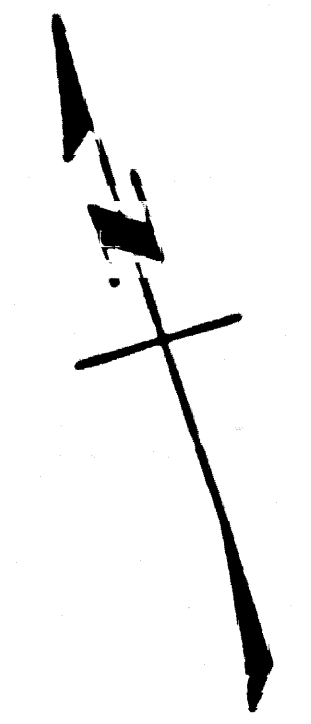
NO CHARGE FOR CONNECTIONS

23,461A

2



Work to be done under separate contract. Lot 3 Tract No. 4665 to be rough graded to subgrade prior to construction of sewer. New pavement to be constructed after sewer installation.



S