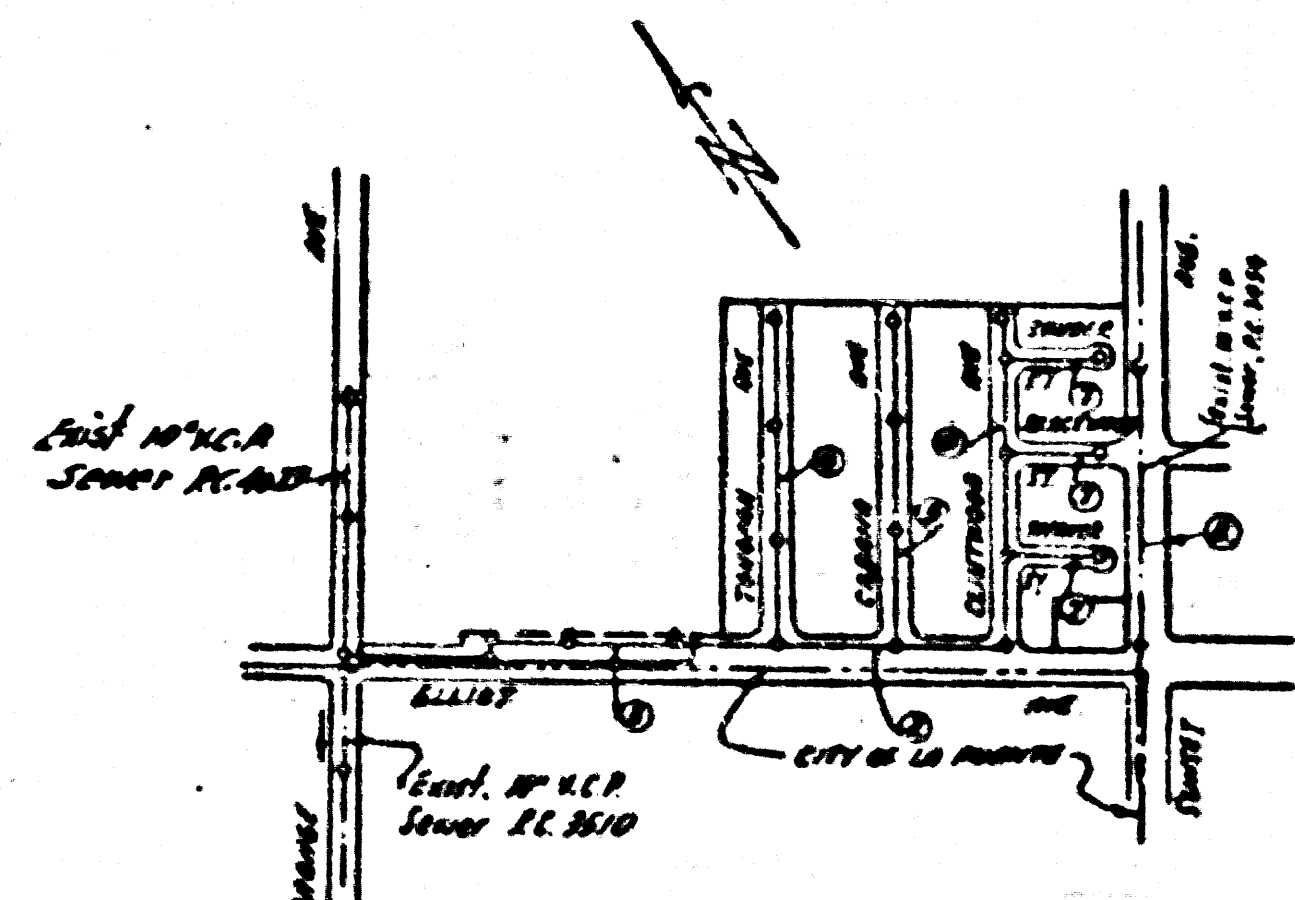


P.C. 3902  
PAGE 2

SECTION

29

**BENCH MARK**  
S.G. 1101  
ELEV. 325.916  
Lead 4' East in SW corner  
of Concrete Base of Water  
Pump 10' East of E. Sunset Ave  
and 1000' North of E. Elliot Ave



INDEX MAP  
TRACT 21667  
P.C. 3902  
SCALE 1" = 600'

SHEET	PAGE
1	1-A
2	2-B

Trim Line  
**PUEENTE BLDG. DIST. NO. 2**

- NOTE:**  
Provide stakes on the property lines or property lines produced at right angles to the sewer line at the center line of each manhole.  
No representative of the County Engineer will survey or layout any portion of the work.  
The owner or his authorized representative shall furnish the County Engineer with grade sheets and stations for all house laterals and Y branches and shall provide stakes for them at their proper locations with stationing plainly marked. Any change in location shall be requested in writing by the owner or his representative.  
No revisions shall be made in these plans without the approval of the County Engineer.
1. Use standard manhole frames and covers, S-a-117.
  2. Use standard strength pipe except as noted.
  3. Use cement mortar for all vitrified clay pipe joints.
  4. Resurface all trench within paved area to meet L.A. County Road Dept. or California State Highway Dept. requirements in accordance with permit.
  5. Encase four feet of sewer at points of interference with poles, S-a-119.
  6. House laterals to be constructed with inverts at property line 6 feet below curb grade except as noted.
  7. All structures shall be brick sewer structures, S-a-104.
  8. For allowable leakage test, use Formula No. 1, Spec's., Sec. 5b.
  9. Manhole tops in unimproved Rights-Of-Way to be 6" above finish grade.
  10. The private engineer is to furnish the House Lateral depth at the property line below the top of curb elevation for each House Lateral, on the Grade Sheet.

**NO CHARGE  
FOR CONNECTIONS**  
*12-19-56*

PROFILE, ALIGNMENT AND GRADE OF  
**SANITARY SEWERS**  
TO BE CONSTRUCTED IN

TRACT NO. 21667

P.C. 3902  
PAGE 1  
SHEET 1

24,308

(8)

PRIVATE CONTRACT NO. 3902  
W. S. 38  
2 SHEETS

Scale: VERT. 1" = 4'  
HORIZ. 1" = 40'  
FEB., 1956  
PREPARED IN THE OFFICE OF  
**BARCLAY ENGINEERING CO.**

*Edward L. Penner*  
Reg. C. E. No. 9783

FOR LEGEND SEE PLAN NO. S-a-64

**NOTE:**  
Grades to which this improvement is to be constructed are shown on plans and profiles. Grade points for top of curbs, center line of streets, or center line of alleys are shown by circles on profiles. At all points between designated points the grade shall be established so as to conform to a straight line drawn between said designated points.  
Elevations are in feet above U.S.C. & G.S. sea level datum of 1929.  
This drawing and the data hereon are hereby made a part of the specifications.  
Work shall be constructed according to specifications on file in the office of the County Engineer and shall be prosecuted only in the presence of the County Engineer.  
Before work can be started, the contractor must obtain a permit to excavate in County streets from the L.A. County Road Dept., 108 W. 2nd St. and make a deposit with the County Engineer, 223 S. Broadway, sufficient to cover the cost of construction inspection and record plans.  
Approval of this plan by the County of Los Angeles does not constitute a representation as to the accuracy of the location of or the existence or non-existence of any underground utility, pipe, or structure within the limits of this project. This note applies to all sheets.  
If work is to be done in a State Highway, a permit must be obtained from the State of California, Division of Highways, 120 South Spring Street.  
**COUNTY OF LOS ANGELES, CALIFORNIA**

Approved, John A. Lambie, County Engineer  
*A.P. Collins*  
Sanitary Engineer

Approved, A.M. Rawn  
CHIEF OF DIVISION DIST. NO. 13  
*A.M. Rawn*  
District Engineer

Checked by *J.P. Kuhn* 12-19-56  
Office of County Engineer, Reg. C. E. No. 7860

1

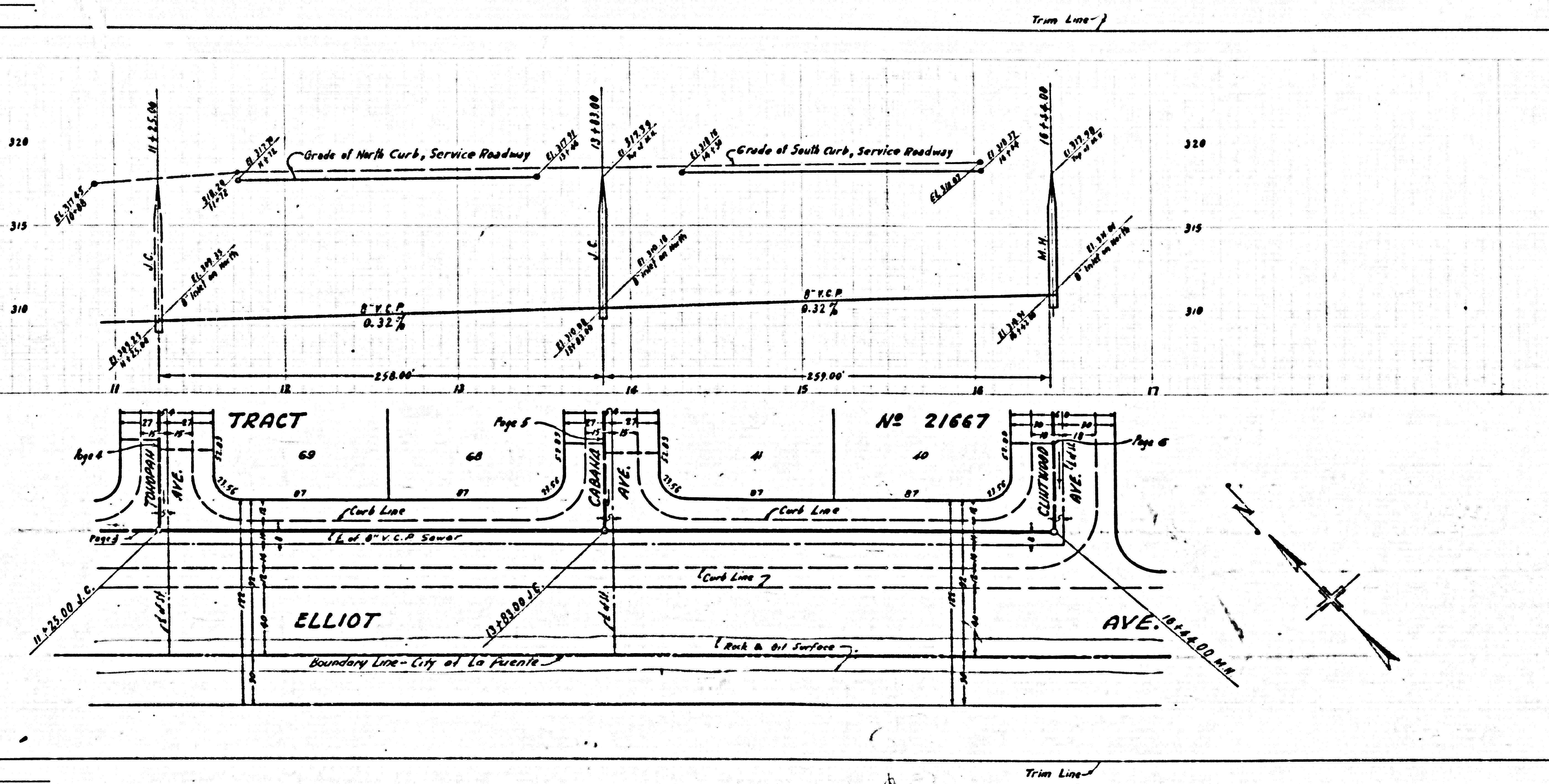
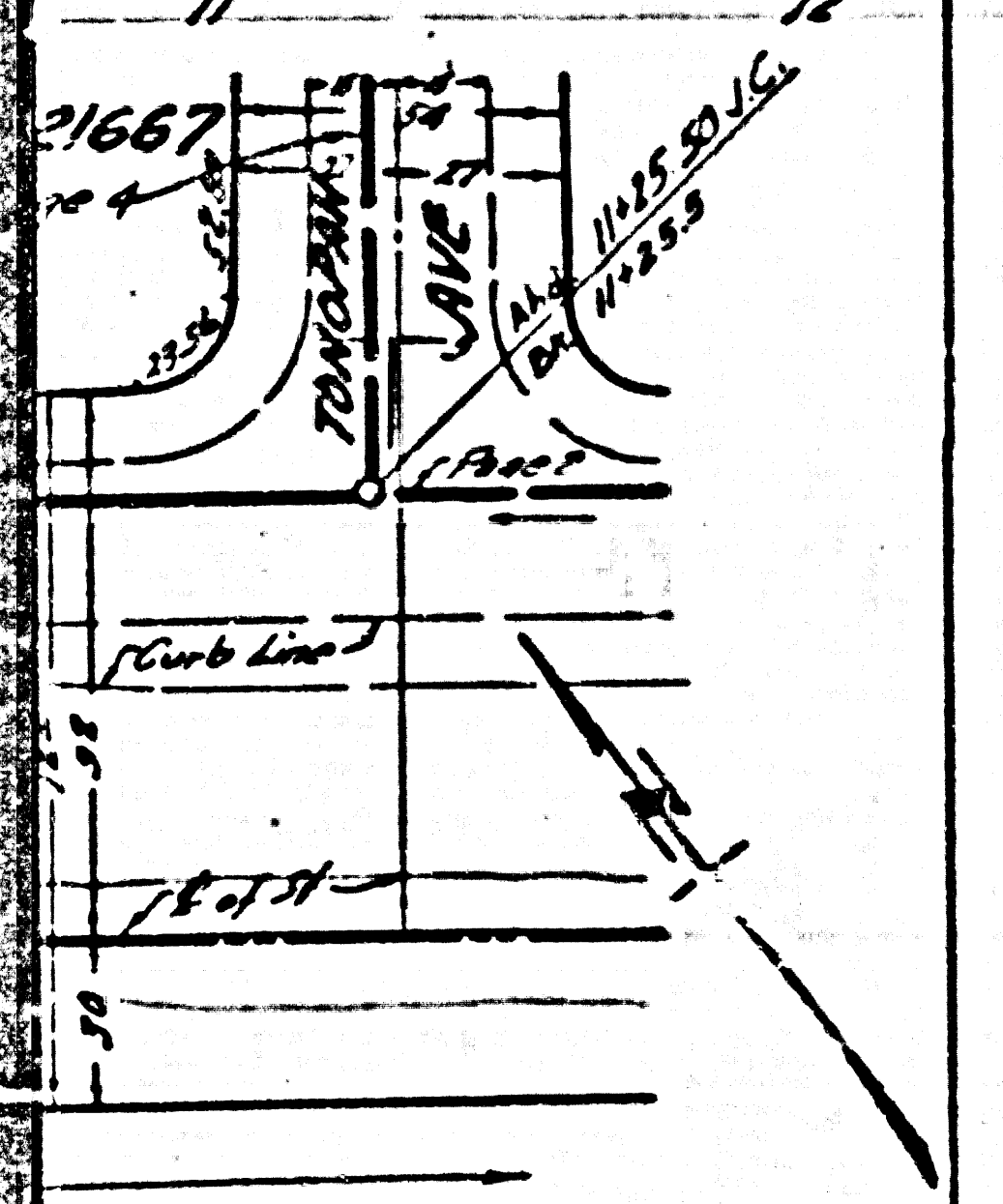
TRACT NO. 21667

P.C. 3902

24,308

Trim Line

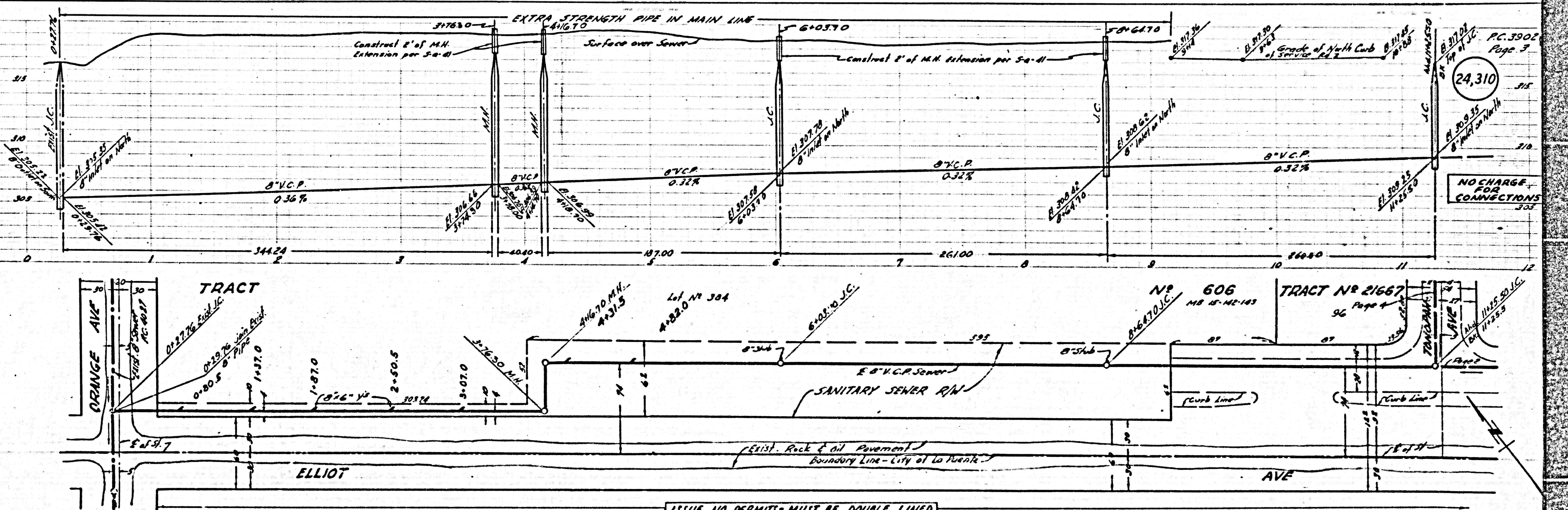
PC 3902  
 Page 3  
 24,310  
 NO CHARGE FOR CONNECTIONS  
 303



PC 3902  
 PAGE 2  
 NO CHARGE FOR CONNECTION  
 24,309

NO CHARGE  
FOR CONNECTION

24,311



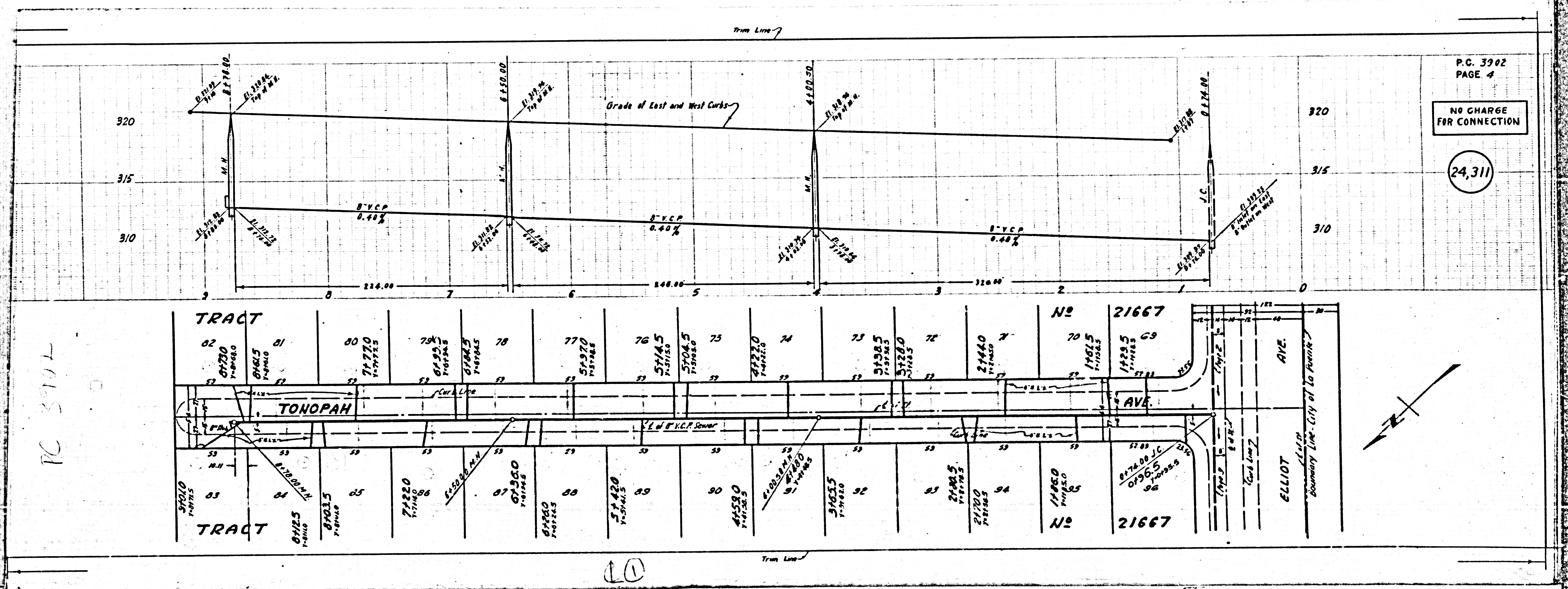
NO CHARGE  
FOR CONNECTIONS

24,310

RE

NO CHARGE  
FOR CONNECTION

24,311



PC 3902

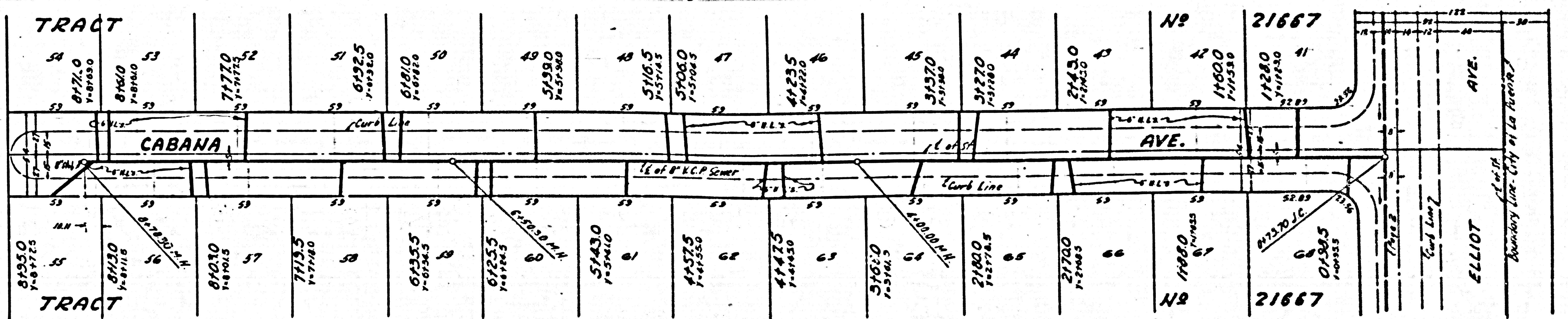
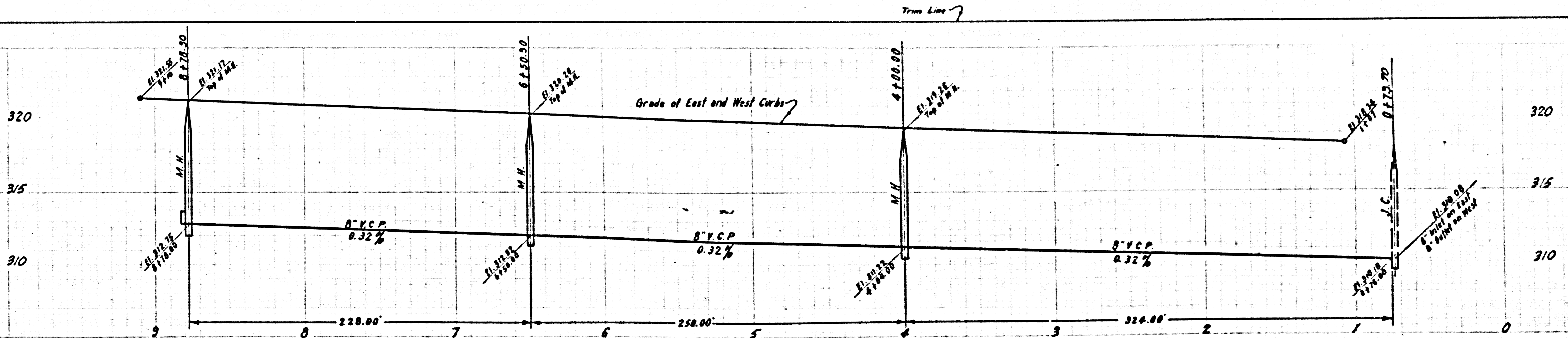
20

NO CHARGE  
FOR CONNECTION

24,313

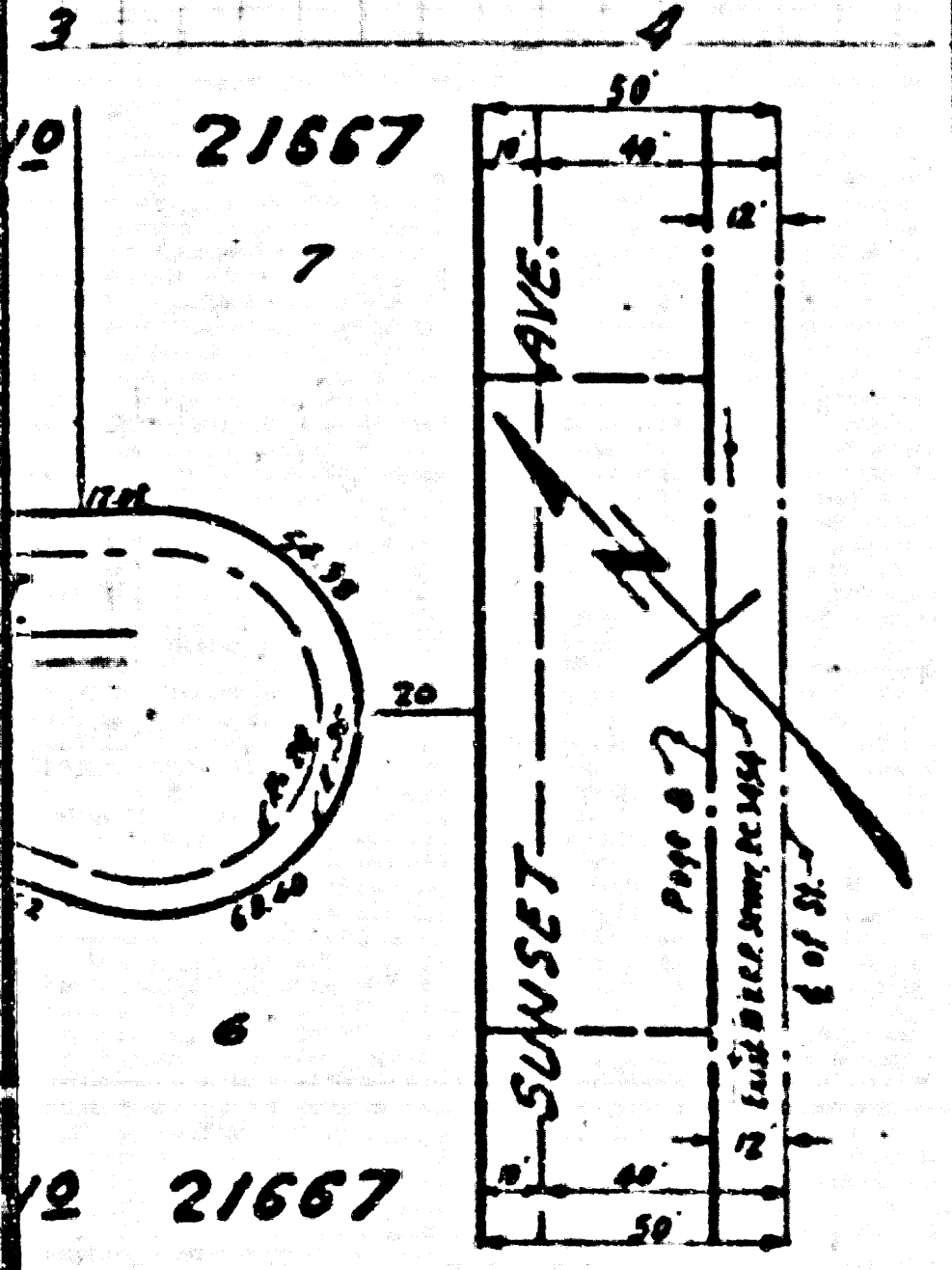
NO CHARGE  
FOR CONNECTION

24,312

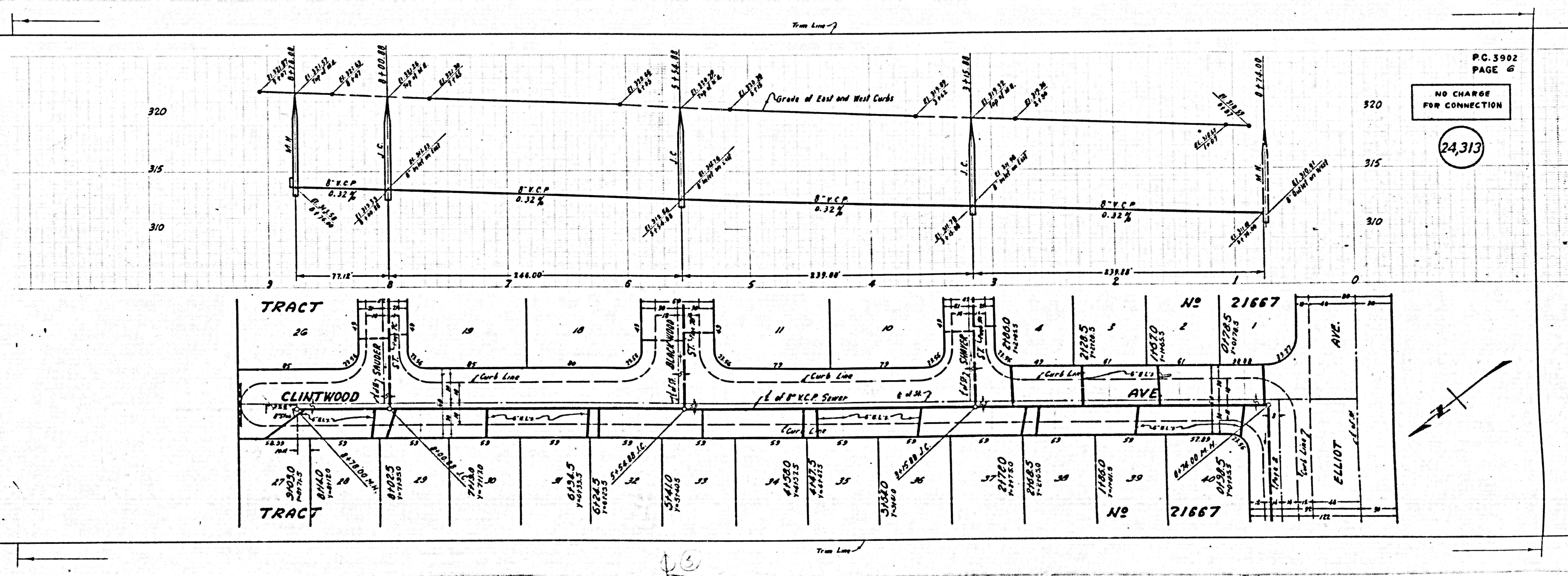


PC. 3902 TRACT 21667

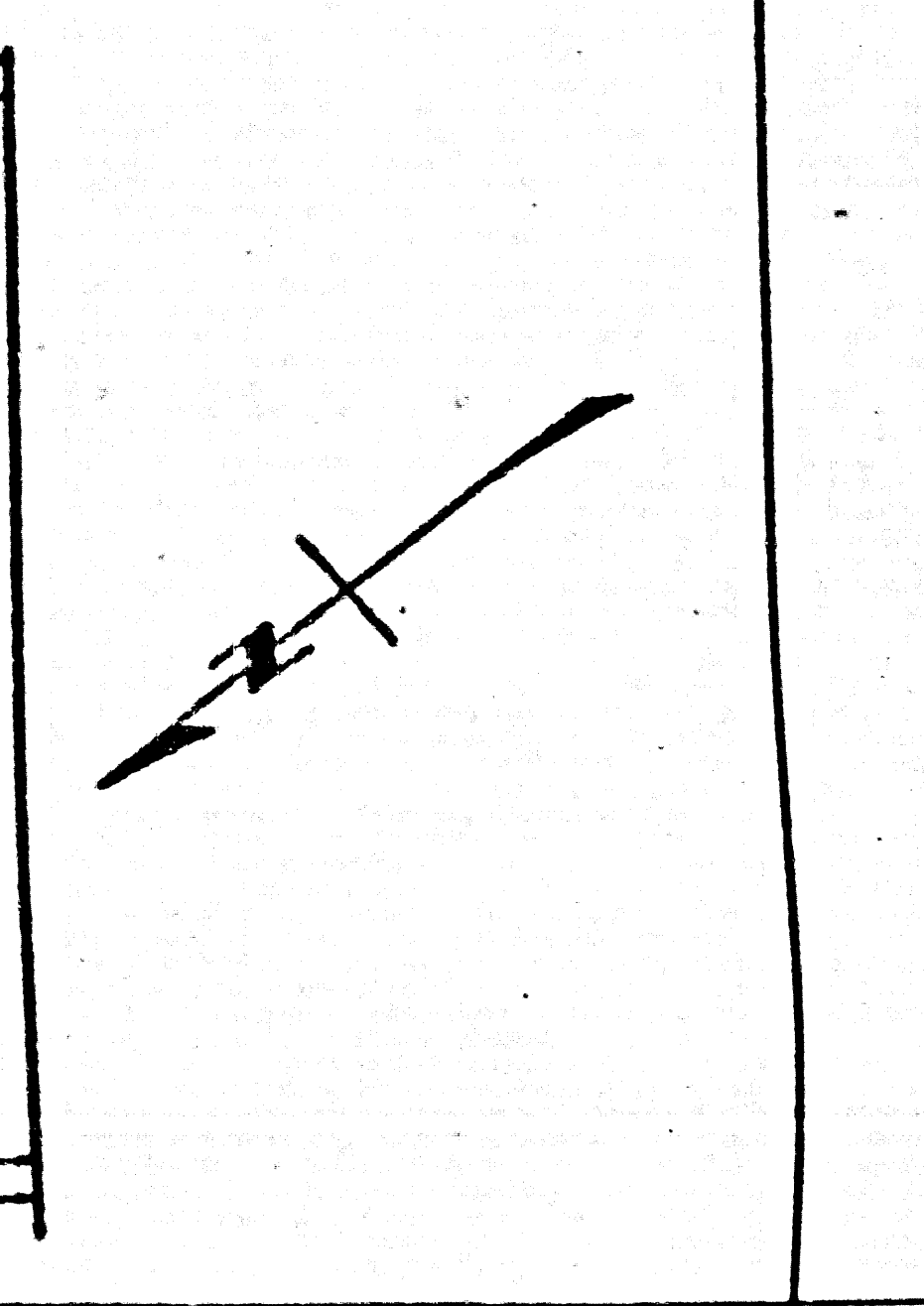
(A) P.C. 3902  
 PAGE 7  
 320  
 315  
 310  
 24,314  
 NO CHARGE  
 FOR CONNECTION



21667



P.C. 3902  
 PAGE 6  
 320  
 315  
 310  
 24,313  
 NO CHARGE  
 FOR CONNECTION

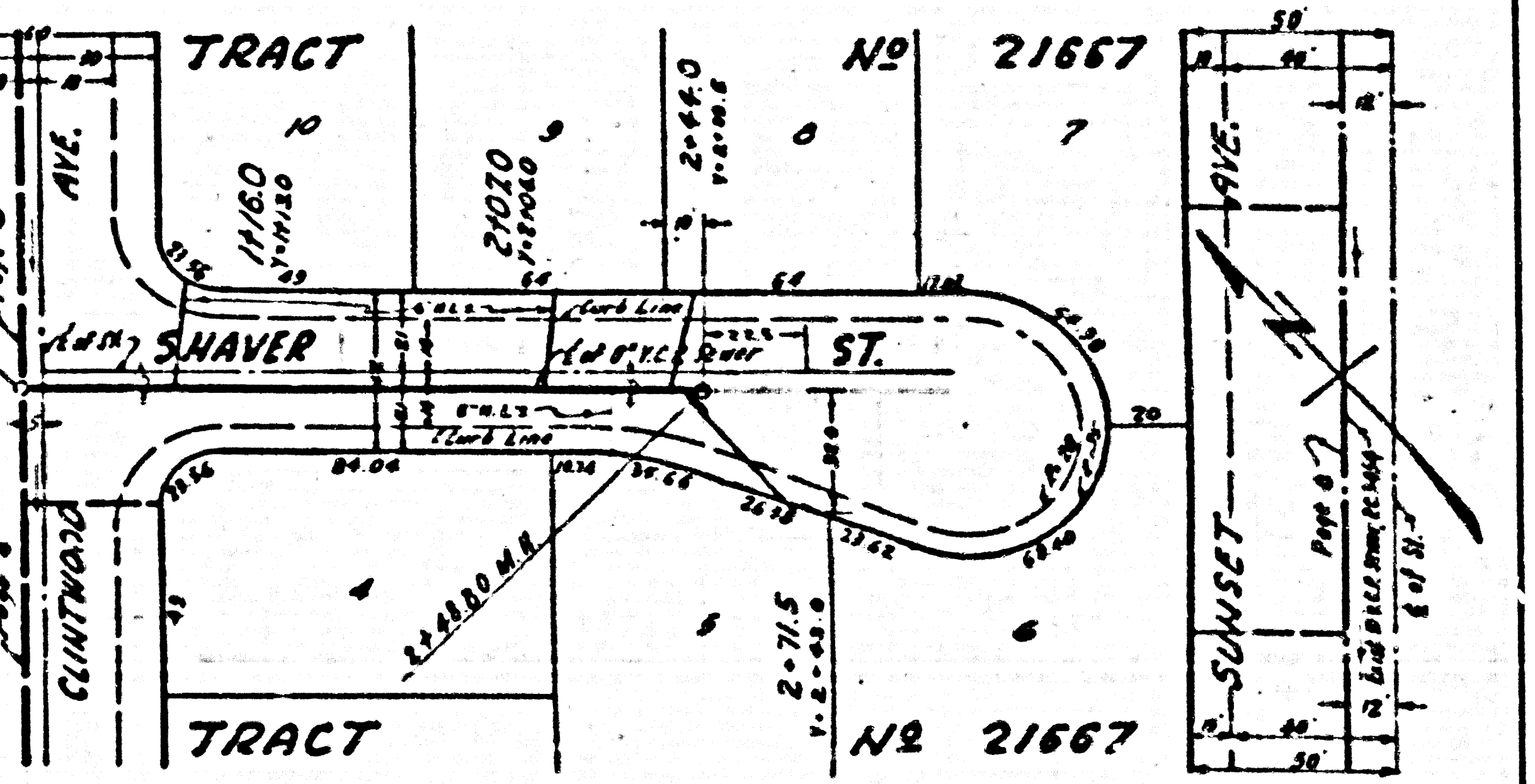
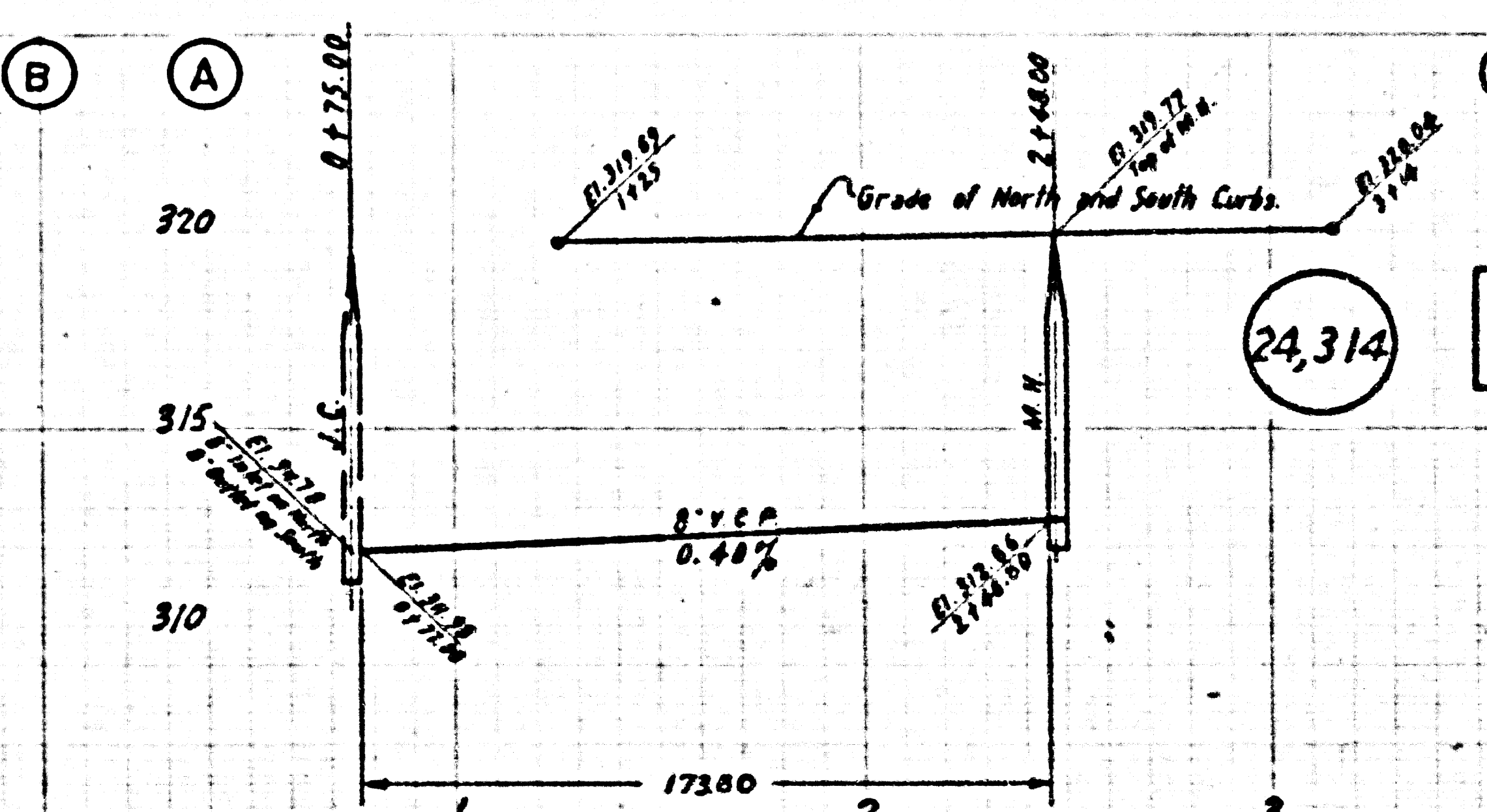
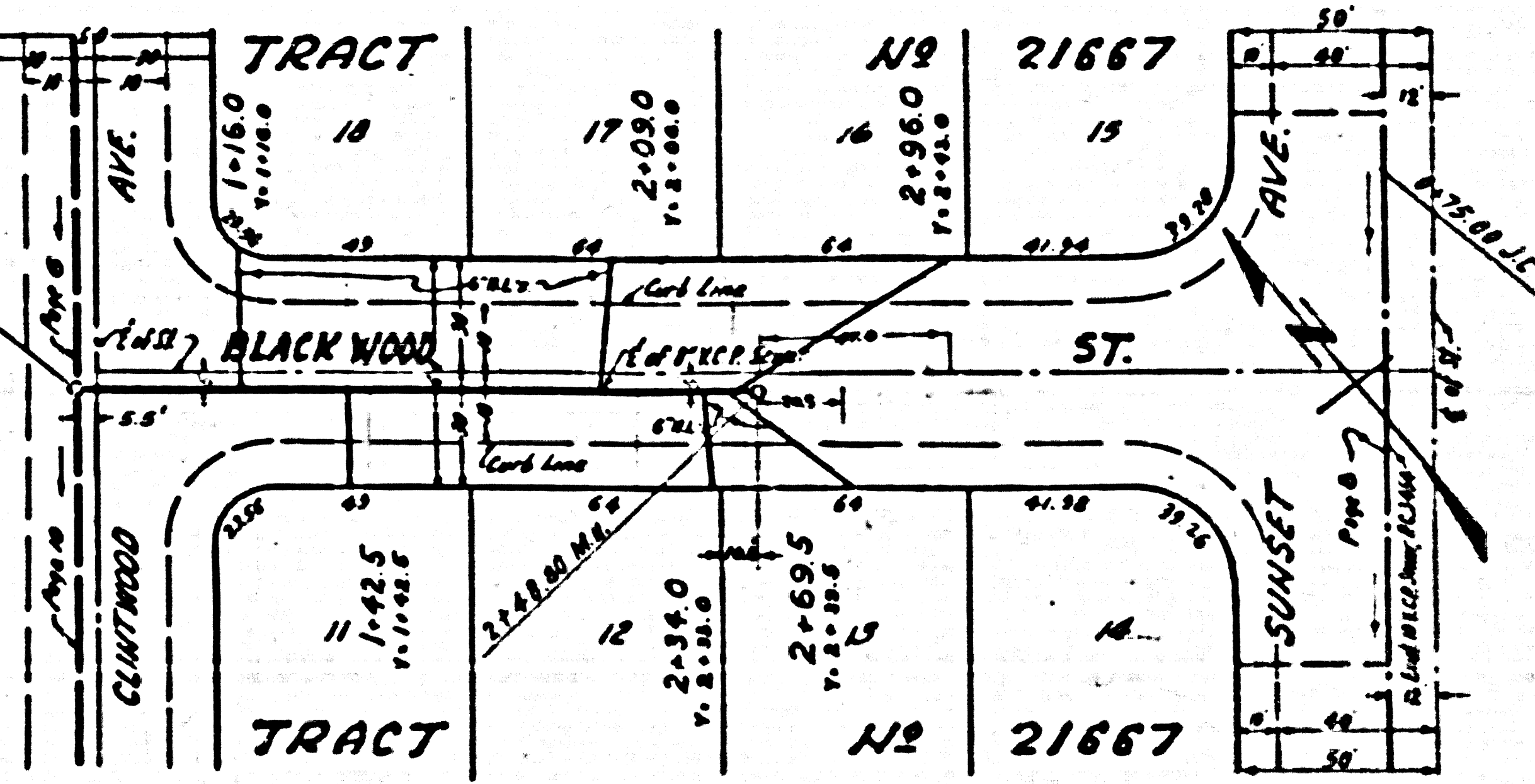
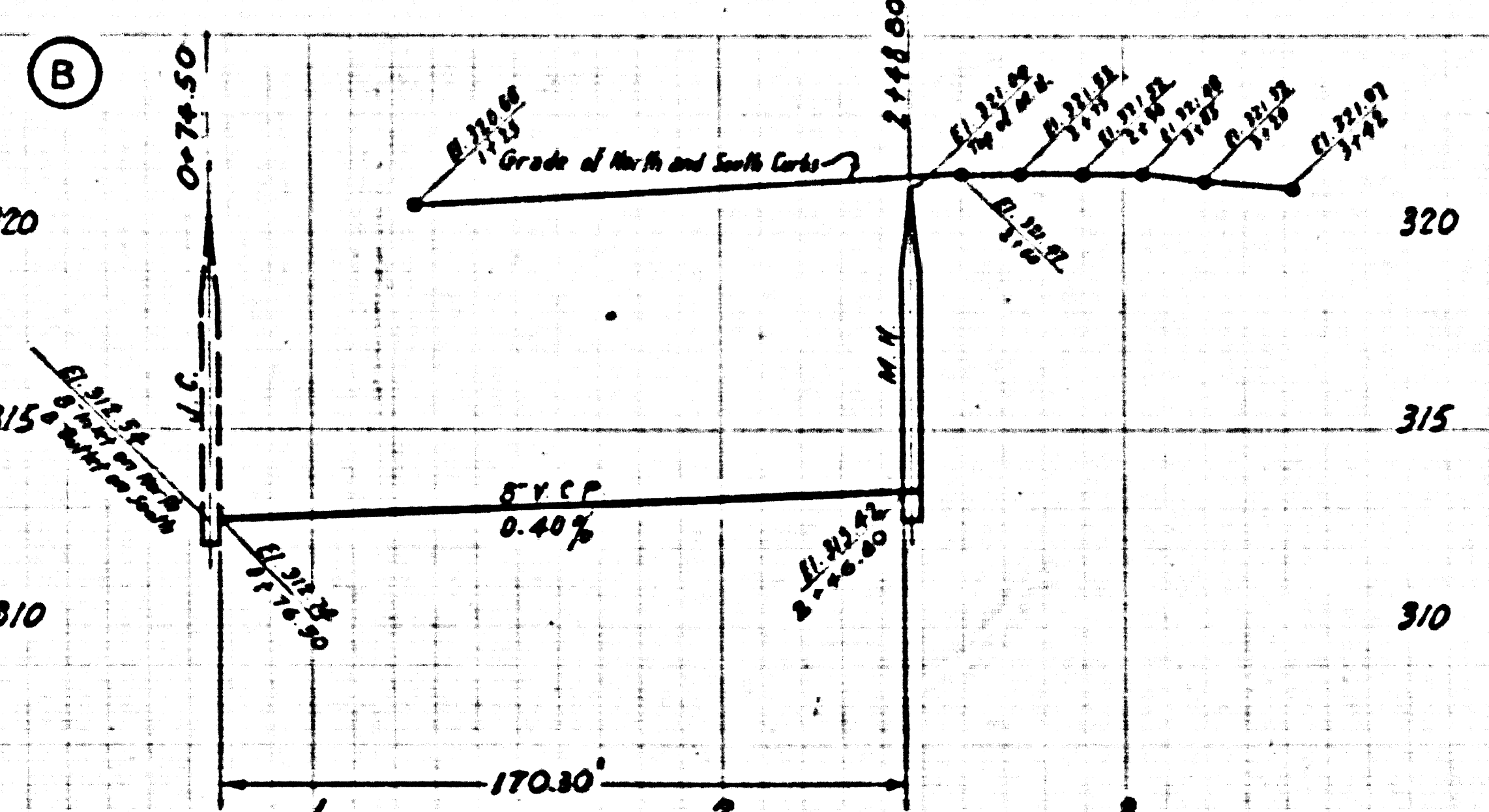
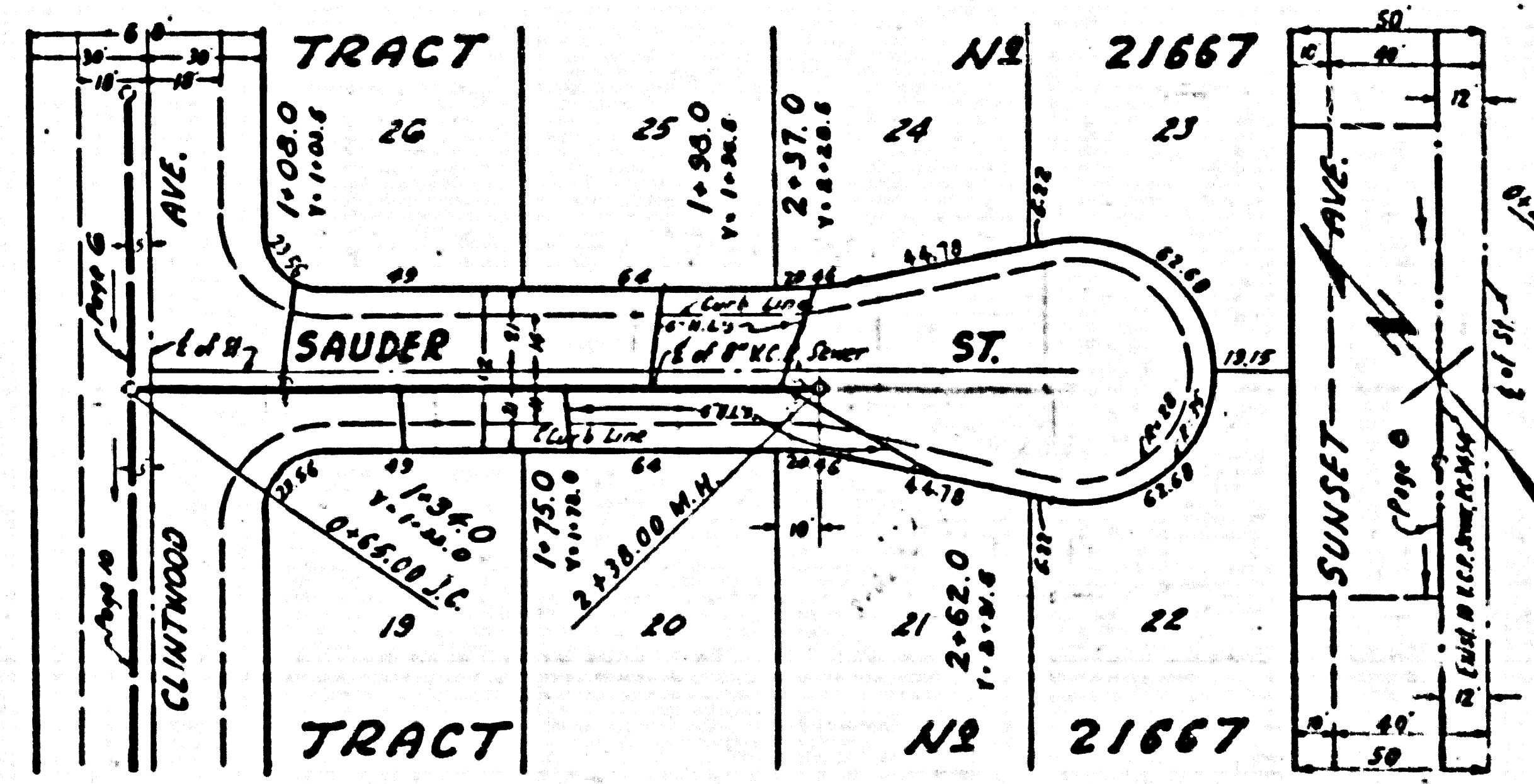
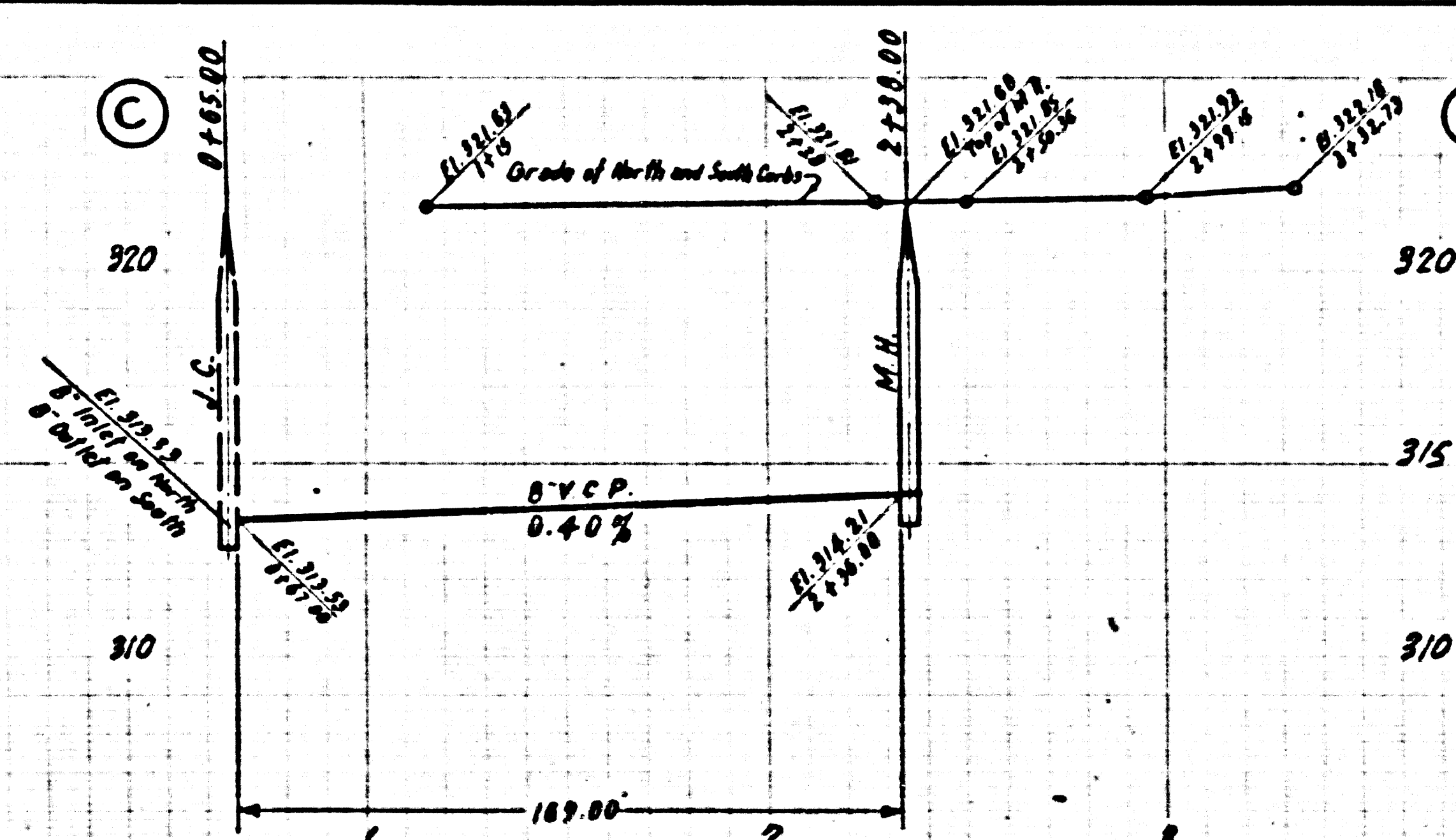
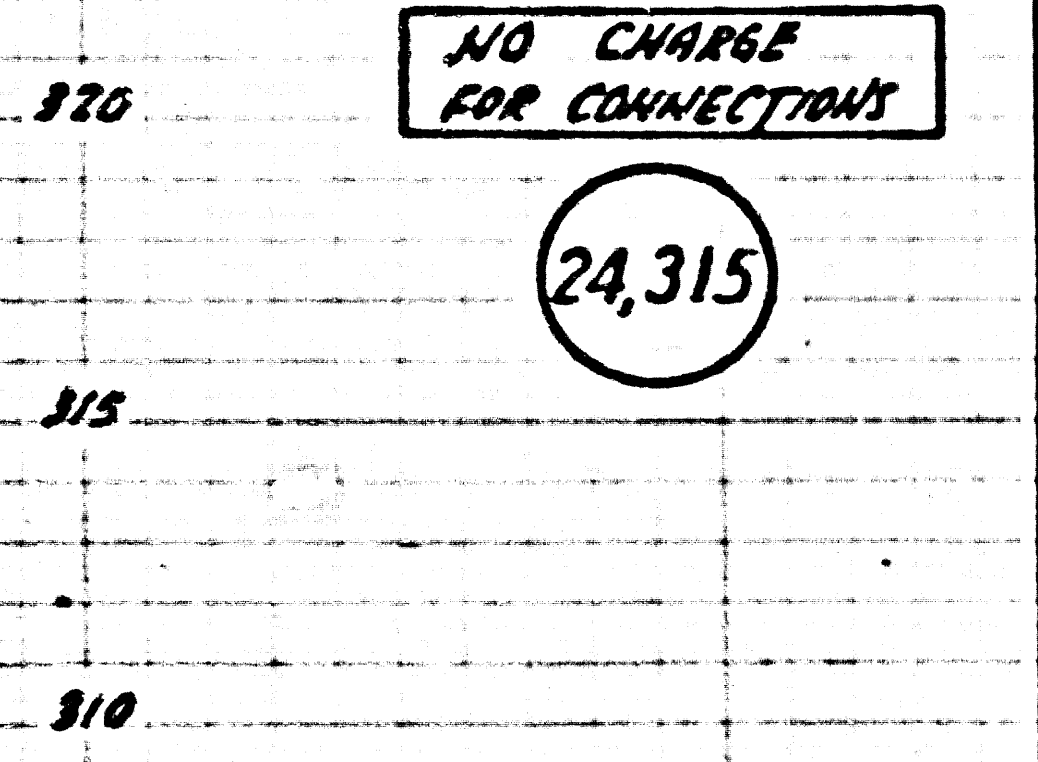


21667

P.C. 3902  
PAGE 6

NO CHARGE  
FOR CONNECTION

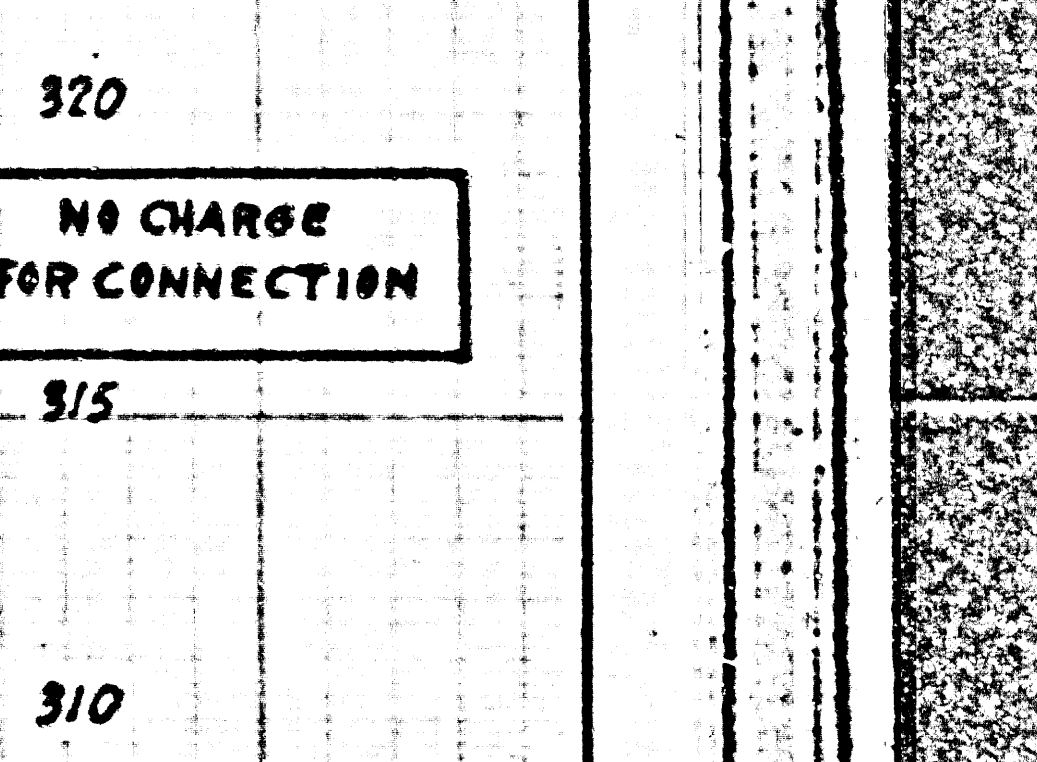
24,315

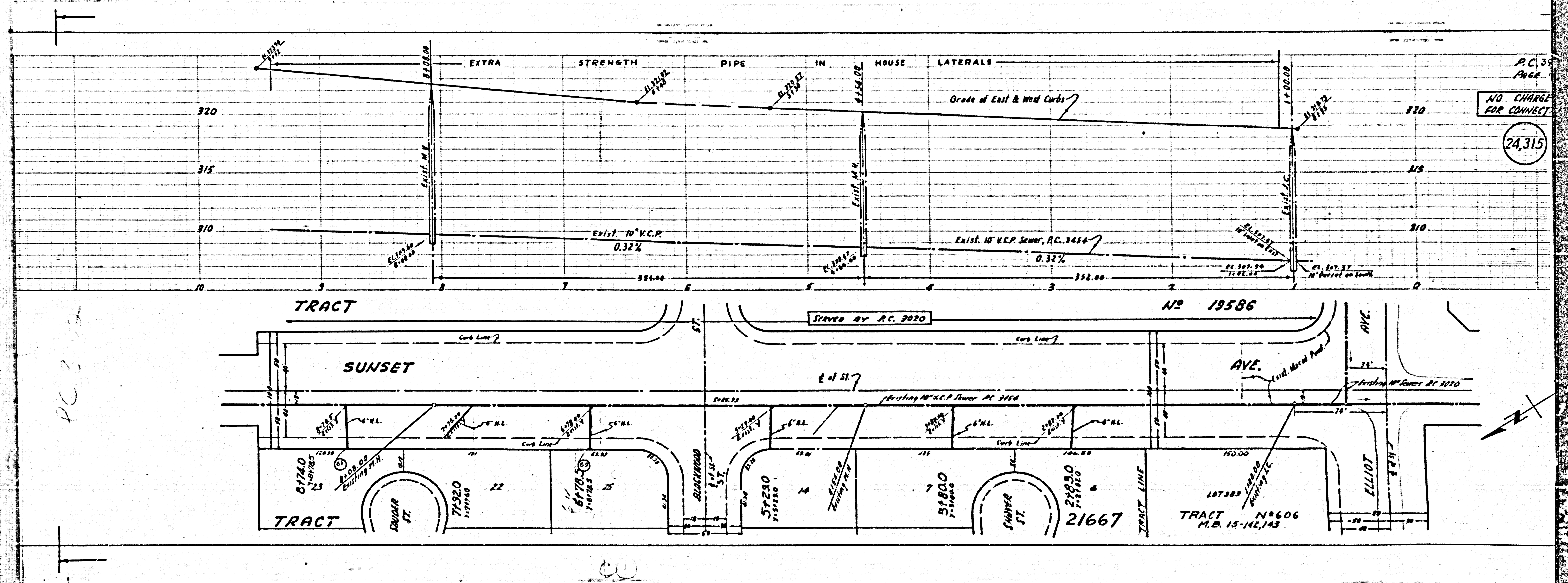


P.C. 3902  
PAGE 7

NO CHARGE  
FOR CONNECTION

24,314





PC 3020

CU

P.C. 3020  
PAGE  
NO CHARGE FOR CONNECT  
24,315