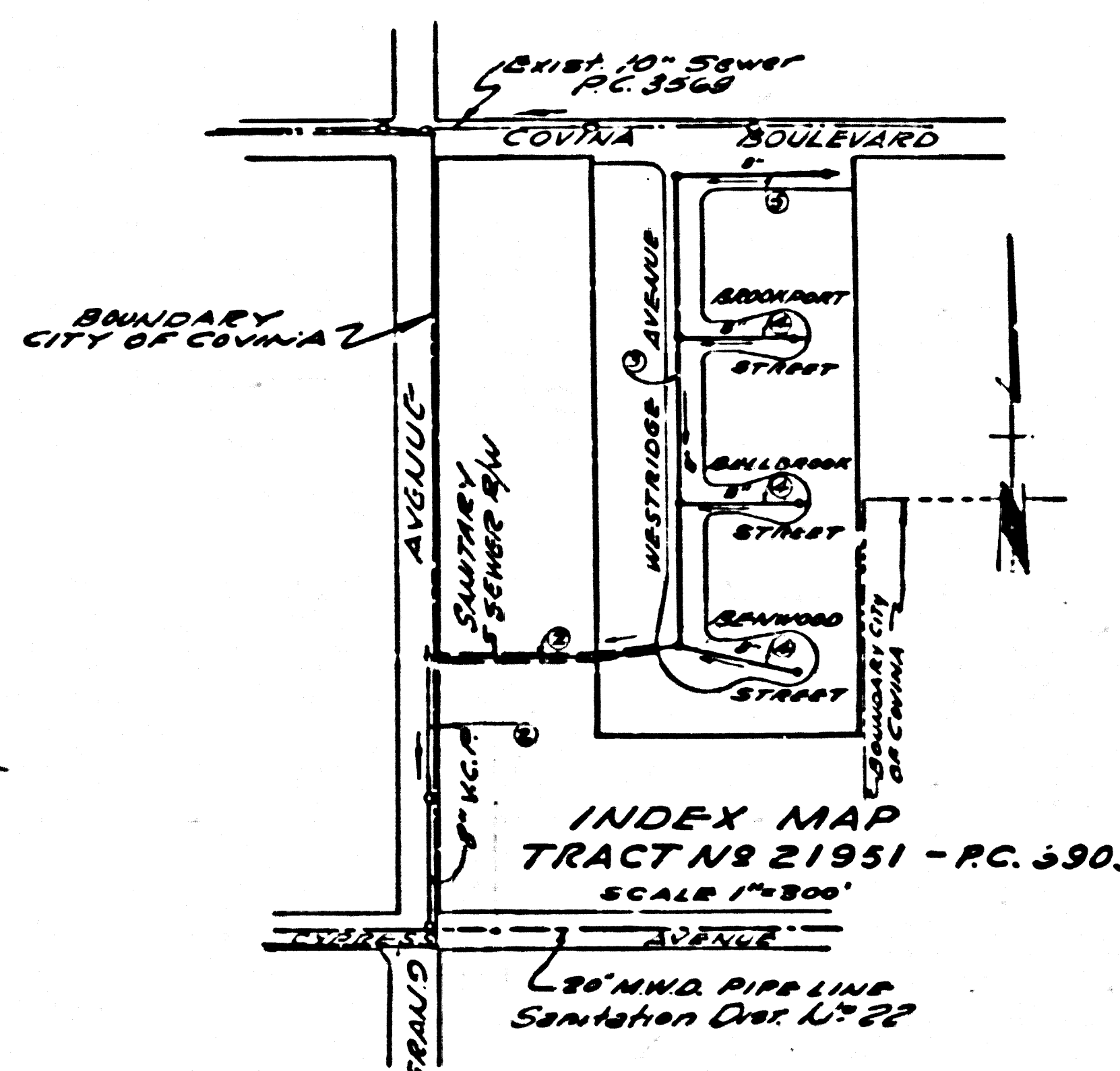


ROUGH MARK
 TO BE MADE AT
 POINTS 8' WEST OF END OF
 EXISTING PORTION OF SANITARY SEWER
 AT CORNER 15th & Grand Avenue
 S.W. 1/4 SEC. 7, T. 15, R. 9 W.



SAN DIMAS BLDG. DIST. NO. 10

- PROVIDE STAKES ON THE PROPERTY LINE OR PROPERTY LINES PRODUCED AT RIGHT ANGLES TO THE SEWER LINE AT THE CENTER LINE OF EACH MANHOLE.
- NO REPRESENTATIVE OF THE COUNTY ENGINEER WILL SURVEY OR LAYOUT ANY PORTION OF THE WORK.
- THE OWNER OR HIS AUTHORIZED REPRESENTATIVE SHALL FURNISH THE COUNTY ENGINEER WITH GRASS SHEETS AND STATION FOR ALL HOUSE LATERALS AND Y-BRANCHES AND SHALL PROVIDE STAKES FOR THEM AT THEIR PROPER LOCATIONS WITH STATIONING AND FLIGHT MARKS. ANY CHANGE IN LOCATION SHALL BE REQUESTED BY THE OWNER OR HIS REPRESENTATIVE.
- NO REVISIONS SHALL BE MADE IN THESE PLANS WITHOUT THE APPROVAL OF THE COUNTY ENGINEER.
1. USE STANDARD MANHOLE FRAMES AND COVERS, S.A. 117, EXCEPT AS NOTED.
 2. USE STANDARD STRENGTH PIPE.
 3. USE CEMENT MORTAR FOR ALL VITRIFIED CLAY PIPE JOINTS.
 4. RESURFACE ALL TRENCH WITH PAVED AREA TO MEET L.A. COUNTY ROAD DEPT. OR CALIF. STATE HIGHWAY DEPT. REQUIREMENTS IN ACCORDANCE WITH PERMITS.
 5. EXPOSE FOUR FEET OF SEWER AT POINTS OF INTERFERENCE WITH POLES, S.A. 119.
 6. HOUSE LATERALS TO BE CONSTRUCTED WITH INVERTS AT PROPERTY LINE, 6 FEET BELOW CURB GRADE EXCEPT AS NOTED.
 7. ALL STRUCTURES SHALL BE BRICK SEWER STRUCTURES, S.A. 118A, EXCEPT AS NOTED.
 8. FOR ALLOWABLE LEAKAGE TEST USE FORMULA NO. 1, S.P.C.S., SEC. II.
 9. MANHOLE TOPS IN UNIMPROVED RIGHTS-OF-WAY TO BE 6" ABOVE FINISHED GRADE EXCEPT AS NOTED.
 10. PRIVATE ENGINEER SHALL FURNISH HOUSE LATERAL DEPTH ABOVE TOP OF CURB OR CENTERLINE DEPTH AT PROPERTY LINE AND THE EACH HOUSE LATERAL ON THE GRADE ENG'G.
 11. BEFORE WORK CAN BE STARTED, THE CONTRACTOR MUST OBTAIN A PERMIT TO EXCAVATE IN GRAND AVENUE FROM THE CITY OF COVINA, CITY HALL, 125 E. COLLEGE ST., COVINA.

CONNECTION CHARGES AS INDICATED

2/21/56

John A. Lamb
 APPROVED CITY OF COVINA
 DATE

checked 12-5-56 W. H. W.

PROFILE ALIGNMENT AND GRADE OF
SANITARY SEWERS PAGE 1
 TO BE CONSTRUCTED IN
TRACT NO. 21951

PRIVATE CONTRACT NO. 3909
 W.S. 48
 3 SHEETS, 6 PAGES
 SCALE: 1" = 10' - 0" HORIZ. 1" = 4' VERT. FEBRUARY, 1956
 PREPARED BY THE OFFICES OF SECURITY ENGINEERS CO.
 1211 W. WASHINGTON AVE.
 LOS ANGELES 17, CALIFORNIA
 Under the Supervision of
Robert C. Collier
 REG. C. E. NO. 8332
 FOR LEGEND SEE PLAN NO. S-A-64

NOTE: GRADES TO WHICH THIS IMPROVEMENT IS TO BE CONSTRUCTED ARE SHOWN ON PLANS AND PROFILES. GRADE POINTS FOR TOP OF CURB, CENTER LINE OF STREETS, OR CENTER LINE OF ALLEYS ARE SHOWN BY LINES ON PROFILES. AT ALL POINTS BETWEEN DESIGNATED POINTS THE GRADE SHALL BE ESTABLISHED SO AS TO CONFORM TO A STRAIGHT LINE DRAWN BETWEEN SAID DESIGNATED POINTS.

ELEVATIONS ARE IN FEET ABOVE M.S.L. (U.S.C. & G.S. 1609.1). DATUM FOR 1929 IS 124.00.

THIS DRAWING AND THE DATA HEREON ARE HEREBY MADE A PART OF THE SPECIFICATIONS.

WORK SHALL BE CONSTRUCTED ACCORDING TO SPECIFICATIONS ON FILE IN THE OFFICE OF THE COUNTY ENGINEER AND SHALL BE PROSECUTED ONLY IN THE PRESENCE OF THE COUNTY ENGINEER.

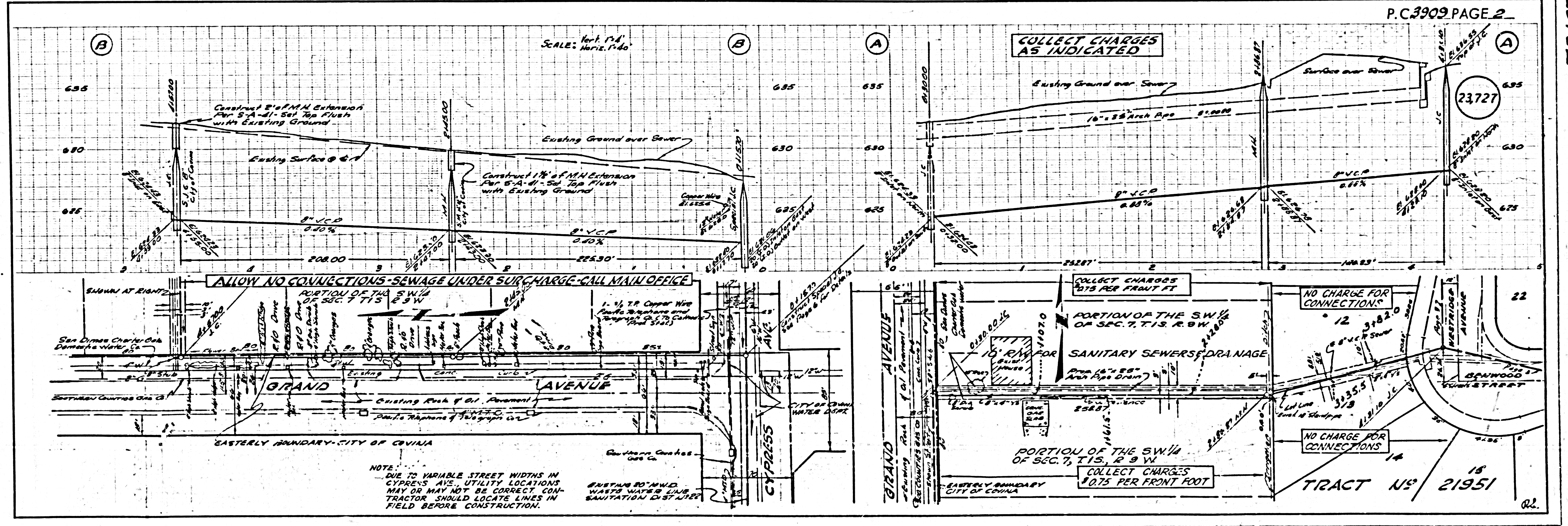
BEFORE WORK CAN BE STARTED THE CONTRACTOR MUST OBTAIN A PERMIT TO EXCAVATE IN COUNTY STREETS FROM THE L.A. COUNTY ROAD DEPT. 108 BY 2ND ST. AND MAKE A DEPOSIT WITH THE COUNTY ENGINEER, ROOM 224 FIVE AMERICAN BLDG. 210 SO. BROADWAY SURVEYING TO COVER THE COST OF CONSTRUCTION INSPECTION AND RECORD PLANS.

APPROVAL OF THIS PLAN BY THE COUNTY OF LOS ANGELES DOES NOT CONSTITUTE A REPRESENTATION AS TO THE ACCURACY OF THE LOCATION OR OF THE EXISTENCE OR NON-EXISTENCE OF ANY UNDERGROUND UTILITY PIPE, OR STRUCTURE WITHIN THE LIMITS OF THIS PROJECT. THIS NOTE APPLIES TO ALL PAGES.

IF WORK IS TO BE DONE IN A STATE HIGHWAY, A PERMIT MUST BE OBTAINED FROM THE STATE OF CALIFORNIA, DIVISION OF HIGHWAYS, 138 SOUTH SPRING STREET.

COUNTY OF LOS ANGELES, CALIFORNIA

APPROVED, JOHN A. LAMB, COUNTY ENGINEER
 APPROVED, A. M. RAWLIN, CHIEF ENGINEER
 BY *A. P. Collins* SANITATION ENGINEER
 BY *A. M. Rawlin* CHIEF ENGINEER
 CHECKED BY *John A. Lamb* 7-23-56
 OFFICE OF COUNTY ENGINEER, REG. C. E. NO. 7496

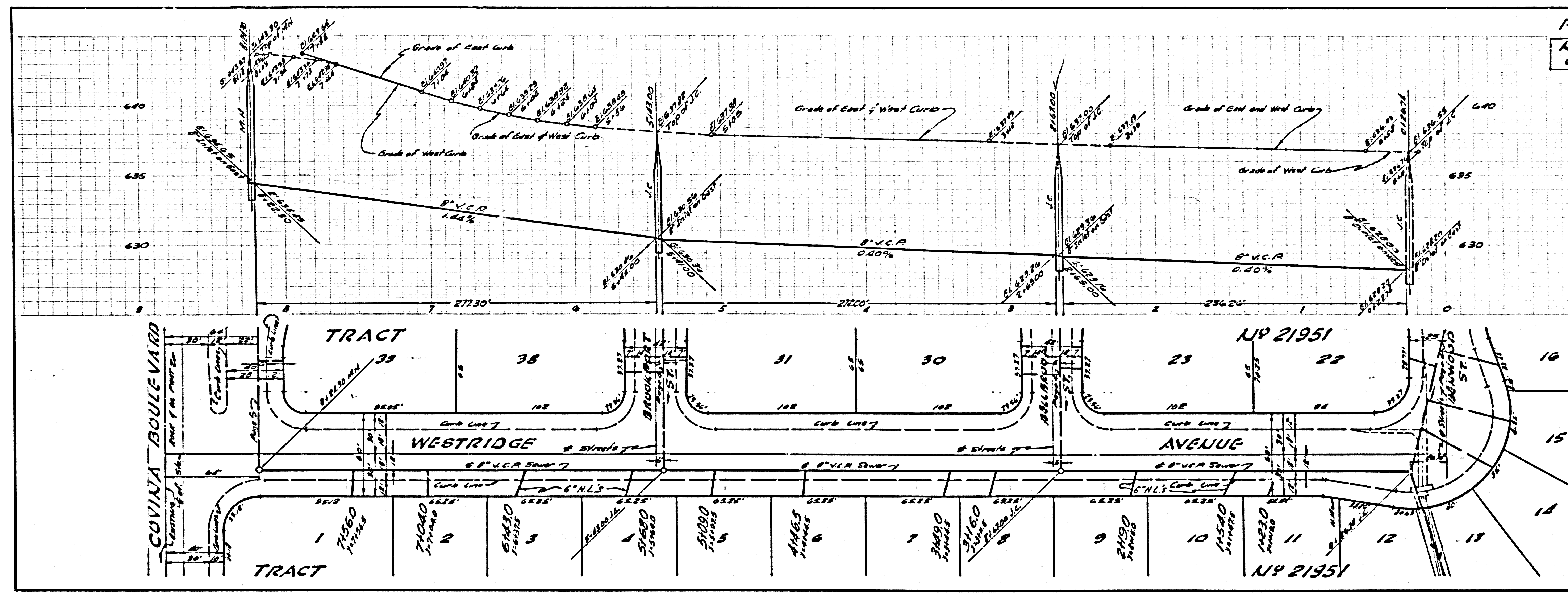


P.C. 3909

TRACT NO. 21951

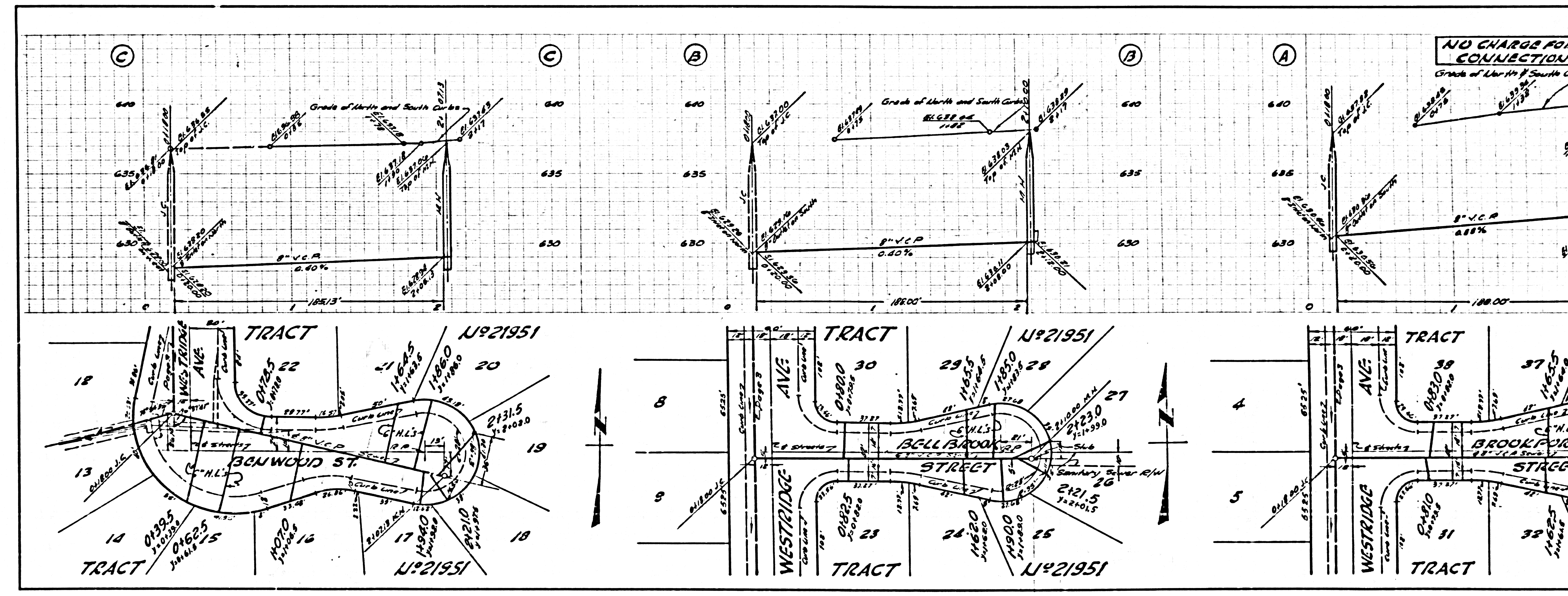
P.C. 3909

23,728



NO CHARGE FOR CONNECTIONS

23,729



P.C. 3909

TRACT NO 21951

P.C. 3909

