

DOWNEY BLDG. DIST. NO. 41

PROFILE ALIGNMENT AND GRADE OF **P.C. 3911**
SANITARY SEWERS PAGE **1**
 TO BE CONSTRUCTED IN
PARAMOUNT BLVD.

23,506

PRIVATE CONTRACT NO. 3911
 W.S. 36
 1 SHEET 2 PAGES
 SCALE: 1" = 40' HORIZ. 1" = 4' VERT. MARCH, 1956
 PREPARED IN THE OFFICES OF
TEGART ENGINEERS

By *Harold M. Sigal*
 REG. E. NO. 3151

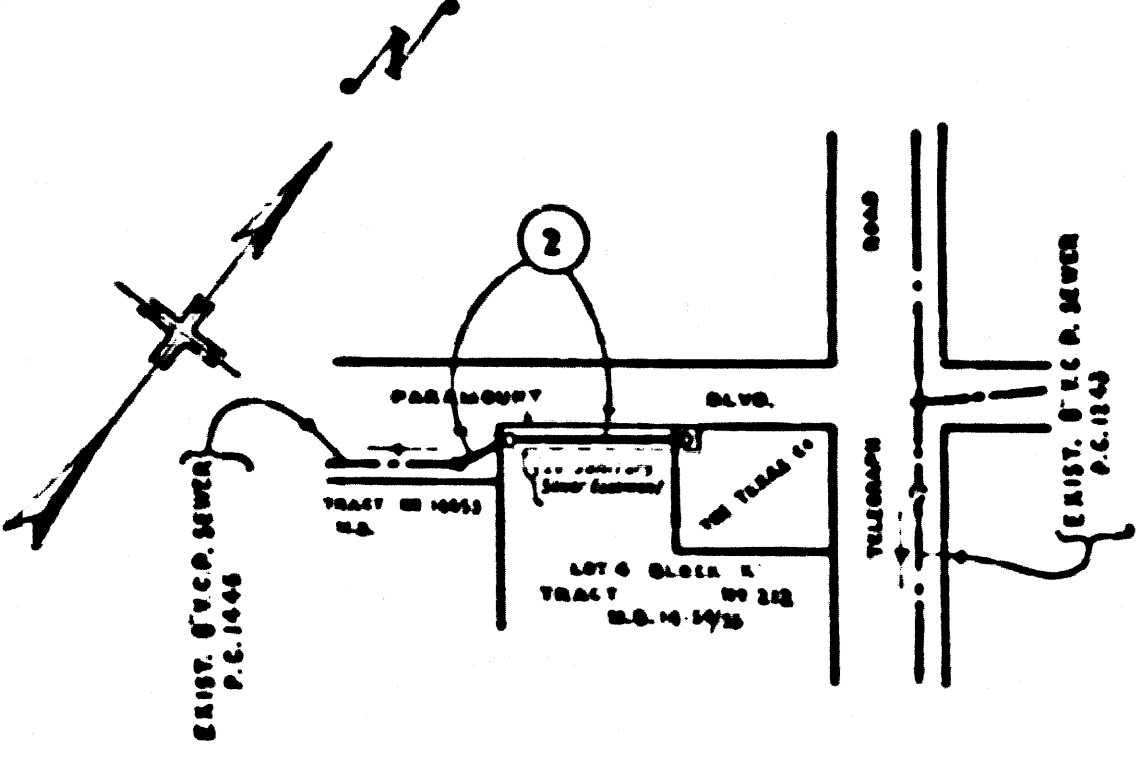
FOR LEGEND SEE PLAN NO. S-A-64

NOTE:
 GRADES TO WHICH THIS IMPROVEMENT IS TO BE CONSTRUCTED ARE SHOWN ON PLANS AND PROFILES. GRADE POINTS FOR TOP OF CURBS, CENTER LINE OF STREETS, OR CENTER LINE OF ALLEYS ARE SHOWN BY CIRCLES OR TRIANGLES AT ALL POINTS BETWEEN DESIGNATED POINTS THE GRADE SHALL BE ESTABLISHED SO AS TO CONFORM TO A STRAIGHT LINE DRAWN BETWEEN SAID DESIGNATED POINTS.
 ELEVATIONS ARE IN FEET ABOVE U.S.C. & G.S. 1929 LEVEL DATUM OF 1929.
 THIS DRAWING AND THE DATA HEREON ARE HEREBY MADE A PART OF THE SPECIFICATIONS.
 BEFORE WORK CAN BE STARTED THE CONTRACTOR MUST OBTAIN A PERMIT TO EXCAVATE IN THE COUNTY STREETS FROM THE COUNTY ENGINEER AND THE COUNTY ROAD DEPT., 108 W. 2ND ST. AND MAKE A DEPOSIT WITH THE COUNTY ENGINEER, ROOM 324 PAN AMERICAN BUILDING, 315 SO. BROADWAY SUFFICIENT TO COVER THE COST OF CONSTRUCTION INSPECTION AND RECORD PLANS.
 APPROVAL OF THIS PLAN BY THE COUNTY OF LOS ANGELES DOES NOT CONSTITUTE A REPRESENTATION AS TO THE ACCURACY OF THE LOCATION OF OR THE EXISTENCE OR NON-EXISTENCE OF ANY UNDERGROUND UTILITY PIPE, OR STRUCTURE WITHIN THE LIMITS OF THIS PROJECT THIS NOTE APPLIES TO ALL PAGES.
 IF WORK IS TO BE DONE IN A STATE HIGHWAY, A PERMIT MUST BE OBTAINED FROM THE STATE OF CALIFORNIA, DIVISION OF HIGHWAYS, 128 SOUTH LIVING STREET.

COUNTY OF LOS ANGELES, CALIFORNIA

APPROVED, JOHN A. LAMBE, COUNTY ENGINEER
 APPROVED, A. M. RAWN, CHIEF ENGINEER
 BY *A.P. Collins* SANITATION ENGINEER
 BY *A.P. Collins* COUNTY ENGINEER
 CHECKED BY *P. P. ...* 5-35-56
 OFFICE OF COUNTY ENGINEER, REG. C. & NO. 7860

- NOTES
- PROVIDE STAKES ON THE PROPERTY LINE OR PROPERTY LINES PRODUCED AT RIGHT ANGLES TO THE SEWER LINE AT THE CENTER LINE OF EACH MANHOLE.
 - NO REPRESENTATIVE OF THE COUNTY ENGINEER WILL SURVEY OR LAYOUT ANY PORTION OF THE WORK.
 - THE OWNER OR HIS AUTHORIZED REPRESENTATIVE SHALL FURNISH THE COUNTY ENGINEER WITH GRADE SHEETS AND STATION FOR ALL HOUSE LATERALS AND Y BRANCHES AND SHALL PROVIDE STAKES FOR THEM AT THEIR PROPER LOCATIONS WITH STATION AND PLAINLY MARKED. ANY CHANGE IN LOCATION SHALL BE REQUESTED IN WRITING BY THE OWNER OR HIS REPRESENTATIVE.
 - NO REVISIONS SHALL BE MADE IN THESE PLANS WITHOUT THE APPROVAL OF THE COUNTY ENGINEER.
 - USE STANDARD MANHOLE FRAMES AND COVERS, S-A-112.
 - USE STANDARD STRENGTH PIPE.
 - USE CEMENT MORTAR FOR ALL VITRIFIED CLAY PIPE JOINTS.
 - RESURFACE ALL TRENCH WITHIN PAVED AREA TO MEET L. A. COUNTY ROAD DEPT., OR CALIF. STATE HIGHWAY DEPT. REQUIREMENTS IN ACCORDANCE WITH PERMITS.
 - BRACE FOUR FEET OF SEWER AT POINTS OF INTERFERENCE WITH POLES, S-A-119.
 - ALL STRUCTURES SHALL BE BRICK SEWER STRUCTURES, S-A-104.
 - FOR ALLOWABLE LEAKAGE TEST USE FORMULA NO. 1 SPEC. SEC. III.
 - MANHOLE TOPS IN UNPAVED RIGHTS-OF-WAY TO BE LEVEL WITH FINISHED GRADE.



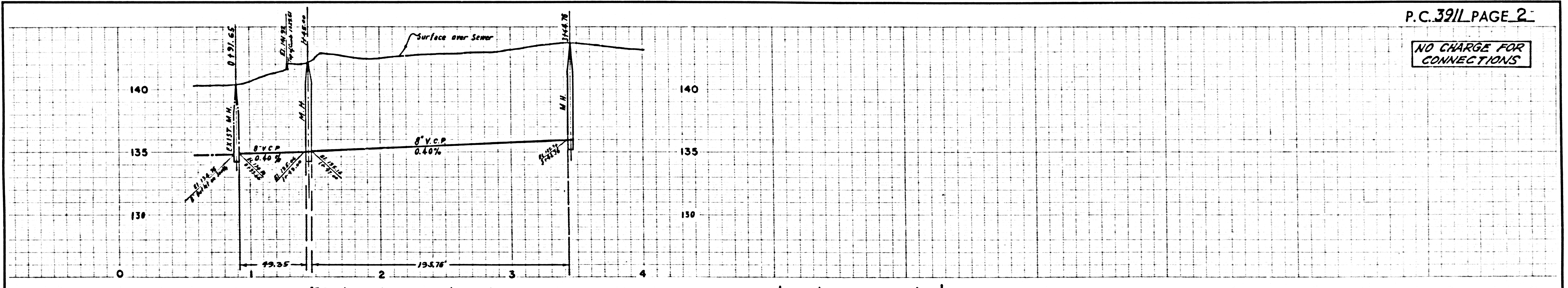
INDEX MAP
 PARAMOUNT BLVD. EXTENSION
 P.C. 3911
 SCALE: 1"=300'

B.M. 40 E.L. 143.76
 64' 5 1/2" S. of West, 65' West of East end
 of Wall, South side of Anaheim-Telegraph
 Road, 65' West of P.P. on 378388-4.
 Ref. L.A. 23 213 on L.R. 134-1.
 200' S. West of E. of Burbank Ave.

NO CHARGE FOR CONNECTIONS
 7-17-56

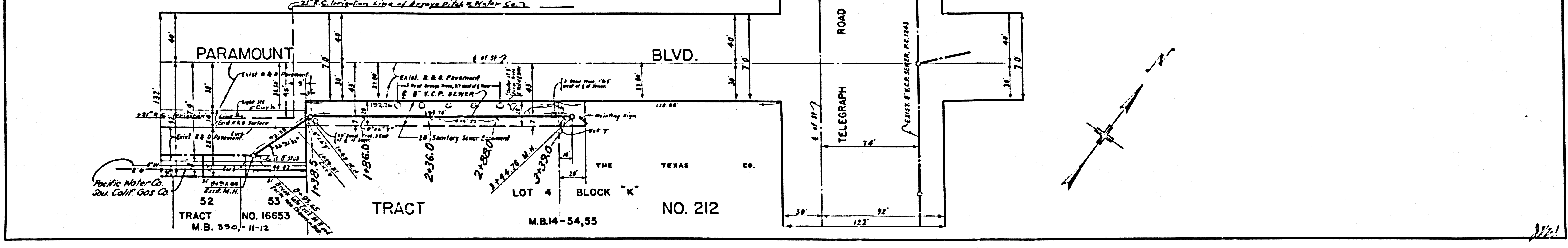
INDUSTRIAL WASTE
 APPROVED BY *Beth ...*

Checked 10-8-56 *W. L. ...*



P.C. 3911 PAGE 2

NO CHARGE FOR CONNECTIONS



P.C. 3911

PARAMOUNT BLVD.