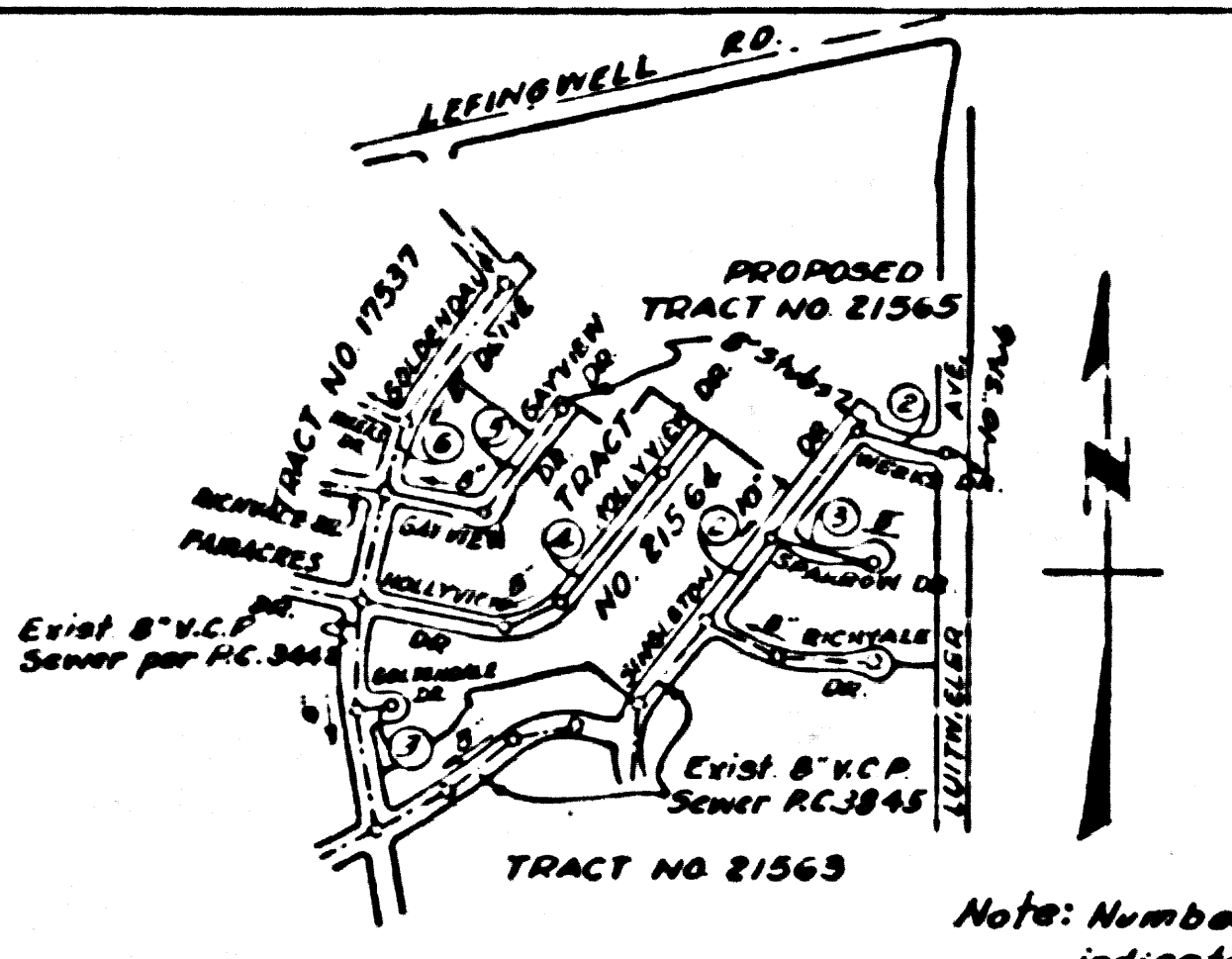


BENCH MARK:
 Valley View Ave. & Rosecrans Ave. 100' S of the E of Rosecrans Ave
 811 W of the E of Valley View Ave. Set in concrete 18" below the
 street surface in a well cut through the pavement & protected by
 a cast iron cover marked "County Surveyor Monument" a 3rd
 County Surveyor Monument Marked "B.M. 1-6 1951 R.E. 329"
 County Surveyor P.B. 1202-4 1952 May 21 110.318
 Note: This Bench Mark is adopted as "B.M. 2778" (E. 110.364) by
 L.A. Co. Rd. Dept. and 6.499 to all elevations to conform to
 L.A. Co. Rd. Datum.



INDEX MAP
 SCALE ~ 1"=600'
 TRACT NO. 21564
 P.C. 3913

Note: Lots 54-57, incl. on Singleton Dr.
 and Lots 80-86, incl. on Rickvale Dr.
 are served by exist. M.L.'s constructed
 under P.C. 3845

NORWALK BLDG. DIST. NO. 4.2

- NOTES**
- PROVIDE STAKES ON THE PROPERTY LINE OR PROPERTY LINES PRODUCED AT RIGHT ANGLES TO THE SEWER LINE AT THE CENTER LINE OF EACH MANHOLE.
 - NO REPRESENTATIVE OF THE COUNTY ENGINEER WILL SURVEY OR LAYOUT ANY PORTION OF THE WORK.
 - THE OWNER OR HIS AUTHORIZED REPRESENTATIVE SHALL FURNISH THE COUNTY ENGINEER WITH GRADE SHEETS AND STATION FOR ALL HOUSE LATERALS AND Y BRANCHES AND SHALL PROVIDE STAKES FOR THEM AT THEIR PROPER LOCATIONS WITH STATION AND PLAINLY MARKED. ANY CHANGE IN LOCATION SHALL BE REQUESTED IN WRITING BY THE OWNER OR HIS REPRESENTATIVE.
 - NO REVISIONS SHALL BE MADE IN THESE PLANS WITHOUT THE APPROVAL OF THE COUNTY ENGINEER.
 - USE STANDARD MANHOLE FRAMES AND COVERS, S.A. 172, CASE III.
 - USE STANDARD STRENGTH PIPE EXCEPT AS NOTED.
 - USE CEMENT MORTAR FOR ALL VITRIFIED CLAY PIPE JOINTS, EXCEPT AS NOTED.
 - RESURFACE ALL TRENCH WITHIN PAVED AREA TO MEET L.A. COUNTY ROAD DEPT. OR CALIF. STATE HIGHWAY DEPT. REQUIREMENTS IN ACCORDANCE WITH PERMITS.
 - ENCASE FOUR FEET OF SEWER AT POINTS OF INTERFERENCE WITH POLES, S.A. 172, CASE III.
 - HOUSE LATERALS TO BE CONSTRUCTED WITH INVERTS AT PROPERTY LINE - 6" FEET BELOW CURB GRADE EXCEPT AS NOTED.
 - ALL STRUCTURES SHALL BE BRICK SEWER STRUCTURES, S.A. 104, EXCEPT AS NOTED.
 - FOR ALLOWABLE LEAKAGE TEST USE FORMULA NO. 1, SPEC. 1, SEC. 26.
 - MANHOLE TOPS IN UNIMPROVED RIGHTS-OF-WAY TO BE 6" ABOVE FINISHED GRADE.
 - THE PRIVATE ENGINEER IS TO FURNISH THE HOUSE LATERAL DEPTH AT THE PROPERTY LINE BELOW THE TOP OF CURB ELEVATION FOR EACH HOUSE LATERAL, ON THE GRADE SHEET.
 - THE CONTRACTOR SHALL SATISFY HIMSELF OF ALL SUBSTRUCTURES AND SHALL BE RESPONSIBLE FOR THEIR LOCATION.
 - NO CONSTRUCTION WILL BE PERMITTED IN FILLED AREAS UNLESS ACCEPTABLE CERTIFICATION IS SUBMITTED TO THE CONSTRUCTION DIVISION OF THE COUNTY ENGINEERS DEPARTMENT THAT COMPACTION IS GREATER THAN 90%.
 - IF COMPACTION IS LESS THAN 90%, THE SEWER MUST BE CRADLED, P.E. 3-10-165.
 - IF COMPACTION IS GREATER THAN 90% CRADLING IS NOT REQUIRED HOWEVER JOINT COMPOUND MUST BE SUBSTITUTED FOR CEMENT MORTAR FOR ALL JOINTS IN FILLED AREAS.
 - THE CONTRACTOR SHALL NOTIFY THE CONSTRUCTION AND STORM DRAIN DIVISION BY TELEPHONE, MADISON 9-4747 EXT. 362, AT LEAST 24 HOURS BEFORE STARTING ANY WORK UNDER THIS CONTRACT.

PROFILE ALIGNMENT AND GRADE OF **P.C. 3913**
SANITARY SEWERS PAGE **1**

TO BE CONSTRUCTED IN
TRACT NO. 21564 (26007)

PRIVATE CONTRACT NO. 3913
 W.S. 34
 3 SHEETS; 6 PAGES
 SCALE: 1"=4' HORIZ. 1"=4' VERT. APRIL, 1957
 PREPARED IN THE OFFICES OF
MCINTIRE & QUIROS INC.

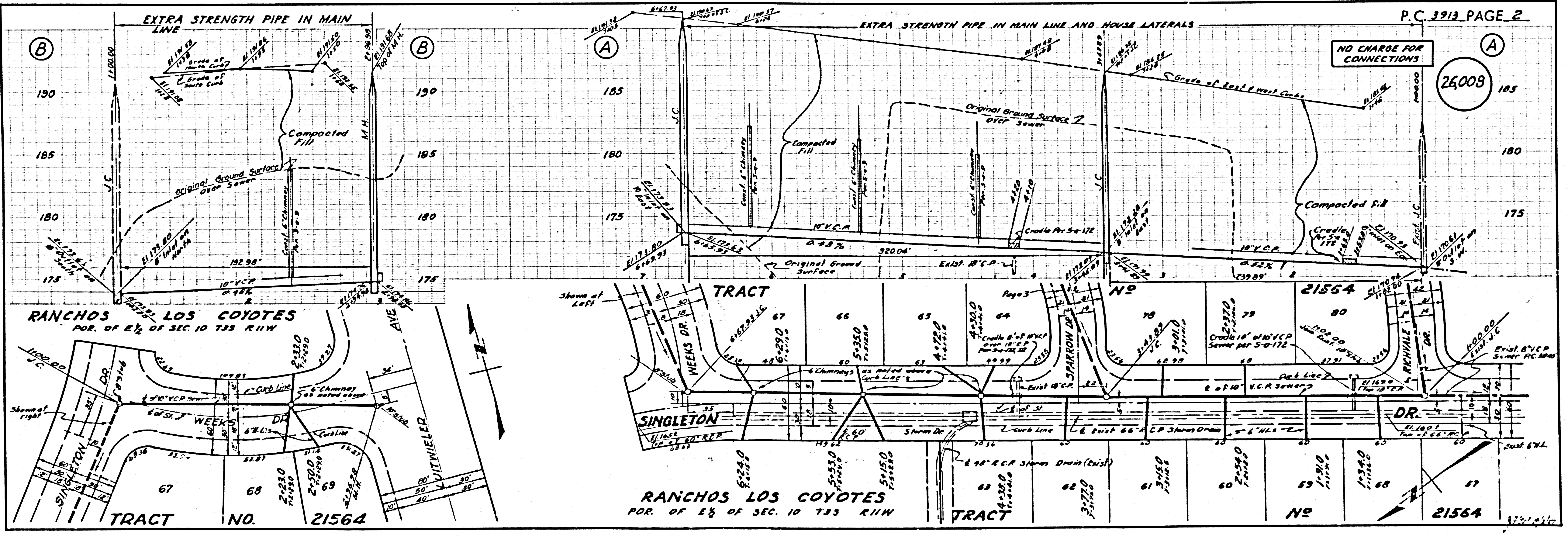
By Allen Murray 5/1/57
 REG. E. NO. 3548
 FOR LEGEND SEE PLAN NO. S-A-64

NOTE:
 GRADES TO WHICH THIS IMPROVEMENT IS TO BE CONSTRUCTED ARE SHOWN ON PLANS AND PROFILES. GRADE POINTS FOR TOP OF CURB, CENTER LINE OF STREET, OR CENTER LINE OF ALLEYS ARE SHOWN BY CIRCLES ON PROFILES. AT ALL POINTS BETWEEN DESIGNATED POINTS THE GRADE SHALL BE ESTABLISHED SO AS TO CONFORM TO A STRAIGHT LINE DRAWN BETWEEN SAID DESIGNATED POINTS.
 ELEVATIONS ARE IN FEET ABOVE U.S.C. & G.S. SEA LEVEL DATUM OF 1929.
 THIS DRAWING AND THE DATA HEREON ARE HEREBY MADE A PART OF THE SPECIFICATIONS.
 BEFORE WORK CAN BE STARTED, THE CONTRACTOR MUST OBTAIN A PERMIT TO EXCAVATE IN COUNTY STREETS FROM THE L.A. COUNTY ROAD DEPT., 126 W. 3RD ST. AND MAKE A DEPOSIT WITH THE COUNTY ENGINEER, ROOM 324 MAIN AMERICAN BUILDING, 325 SO. BROADWAY SUFFICIENT TO COVER THE COST OF CONSTRUCTION, INSPECTION AND RECORD PLANS.
 APPROVAL BY THIS PLAN BY THE COUNTY OF LOS ANGELES DOES NOT CONSTITUTE A REPRESENTATION AS TO THE ACCURACY OF THE LOCATION OF OR THE EXISTENCE OR NON-EXISTENCE OF ANY UNDERGROUND UTILITY PIPE, OR STRUCTURE WITHIN THE LIMITS OF THIS PROJECT. THIS NOTE APPLIES TO ALL PAGES.
 IF WORK IS TO BE DONE IN A STATE HIGHWAY, A PERMIT MUST BE OBTAINED FROM THE STATE OF CALIFORNIA, DIVISION OF HIGHWAYS, 128 SOUTH SPRING STREET.

COUNTY OF LOS ANGELES, CALIFORNIA
 APPROVED, JOHN A. LAMBE, COUNTY ENGINEER
 APPROVED, A. M. BAWN, CHIEF ENGINEER
 BY John A. Lambe BY A. M. Bawn
 SANITATION ENGINEER OFFICE ENGINEER
 CHECKED BY St. Oude 1-3-58
 OFFICE OF COUNTY ENGINEER, REG. C. E. NO. 7946

NO CHARGE FOR CONNECTIONS
 7-27-58 St. Oude 1-3-58

REVISION: RAISED CURB GRADES ON SINGLETON DRIVE & WEEKS DRIVE CURB & SEWER GRADES ON SPARROW DRIVE
 REVISION APPROVED: St. Oude 3-6-58
 OFFICE OF COUNTY ENGINEER, REG. C. E. NO. 7946



P.C. 3913 PAGE 2

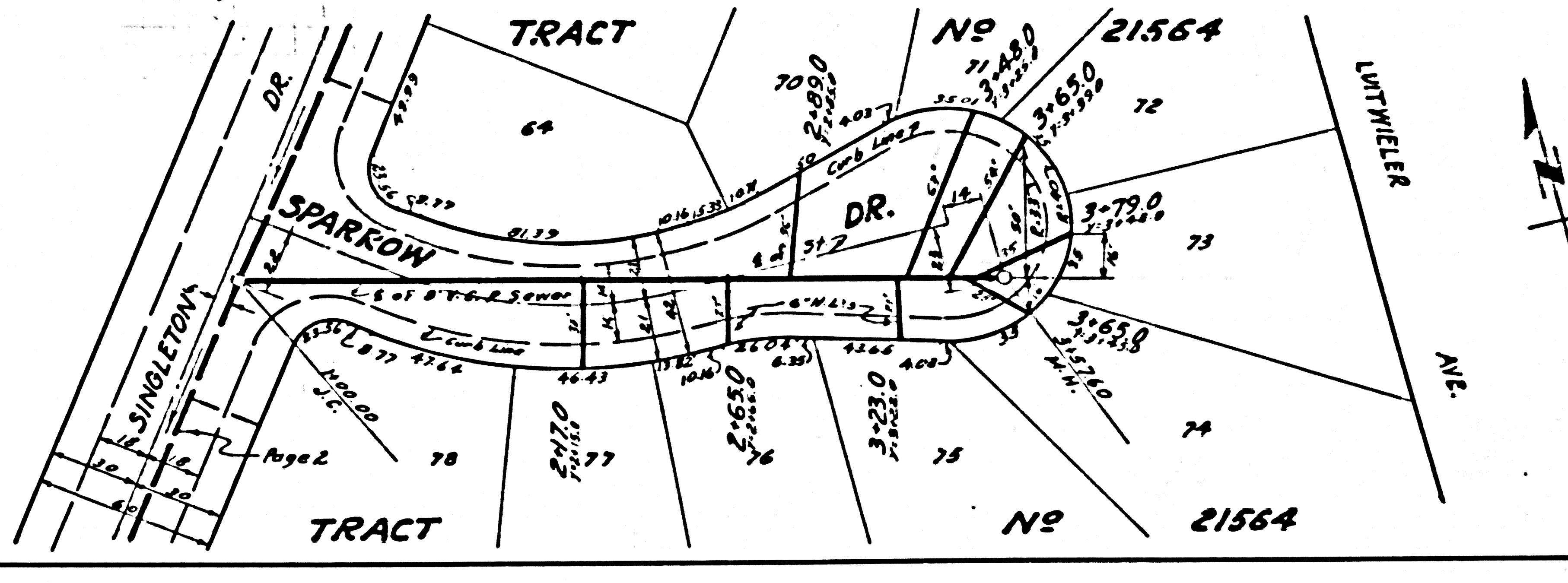
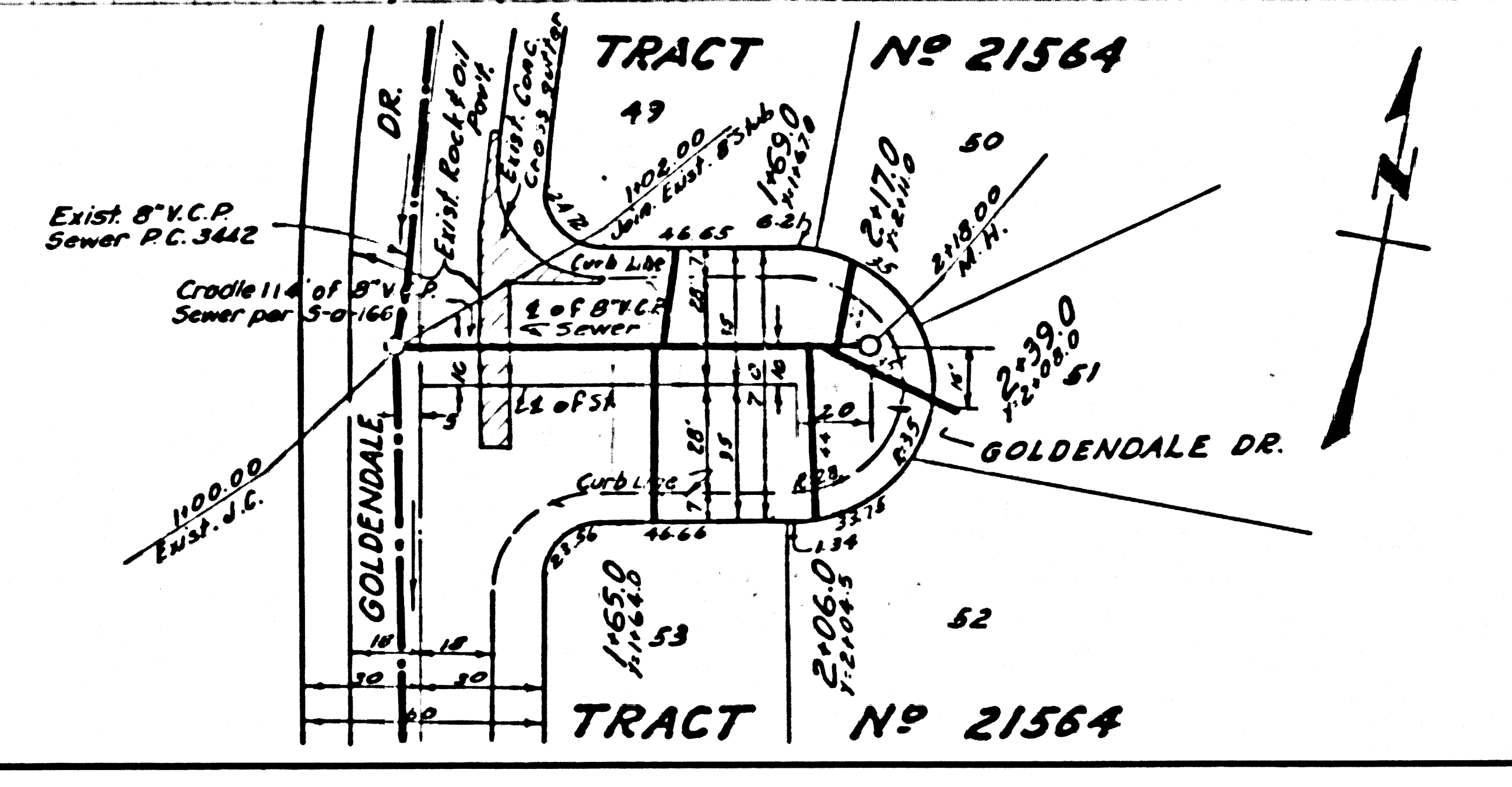
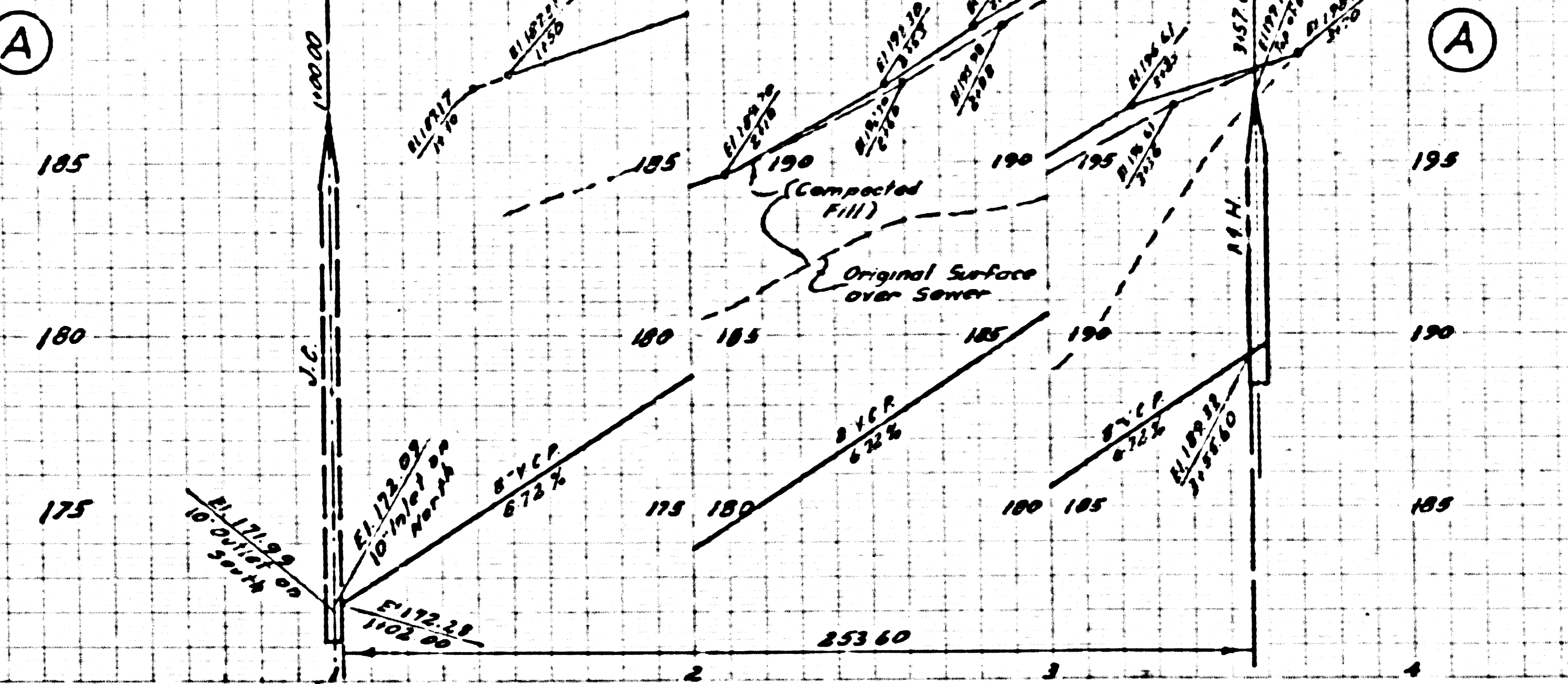
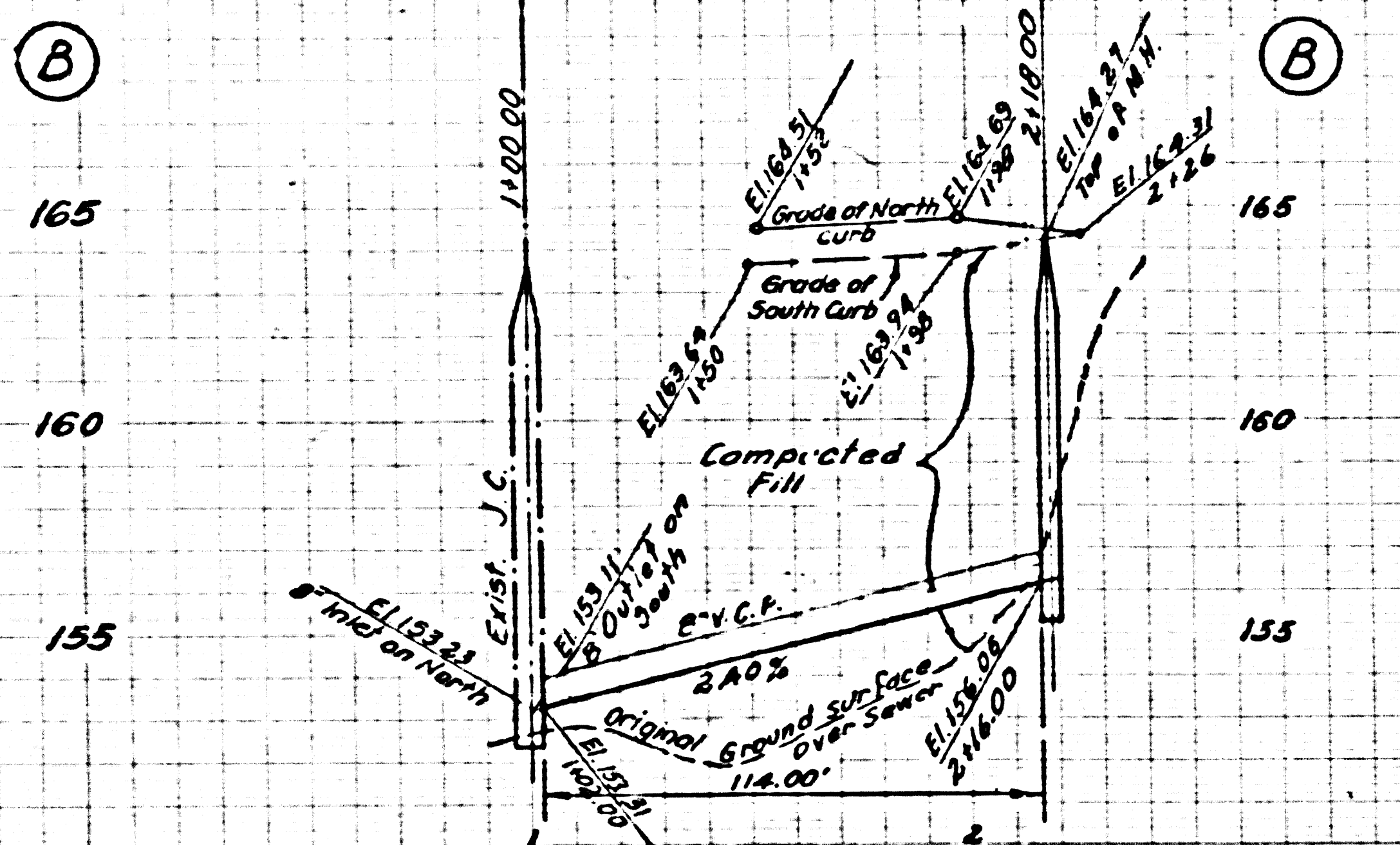
NO CHARGE FOR CONNECTIONS
 (26008)

RANCHOS LOS COYOTES
 POR. OF E 1/4 OF SEC. 10 T3S R11W

TRACT NO. 21564

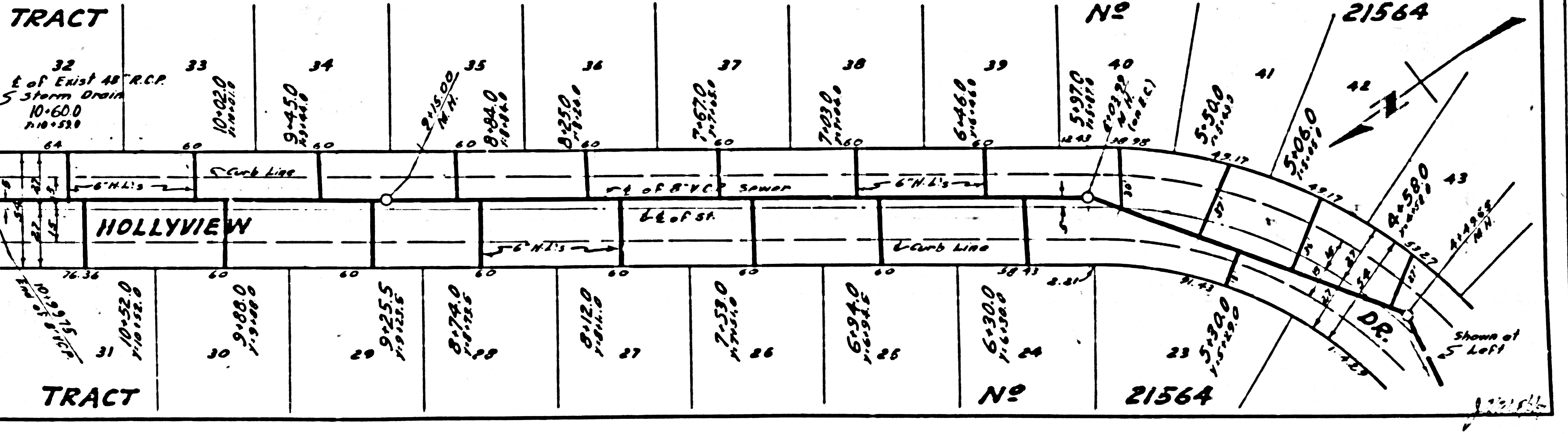
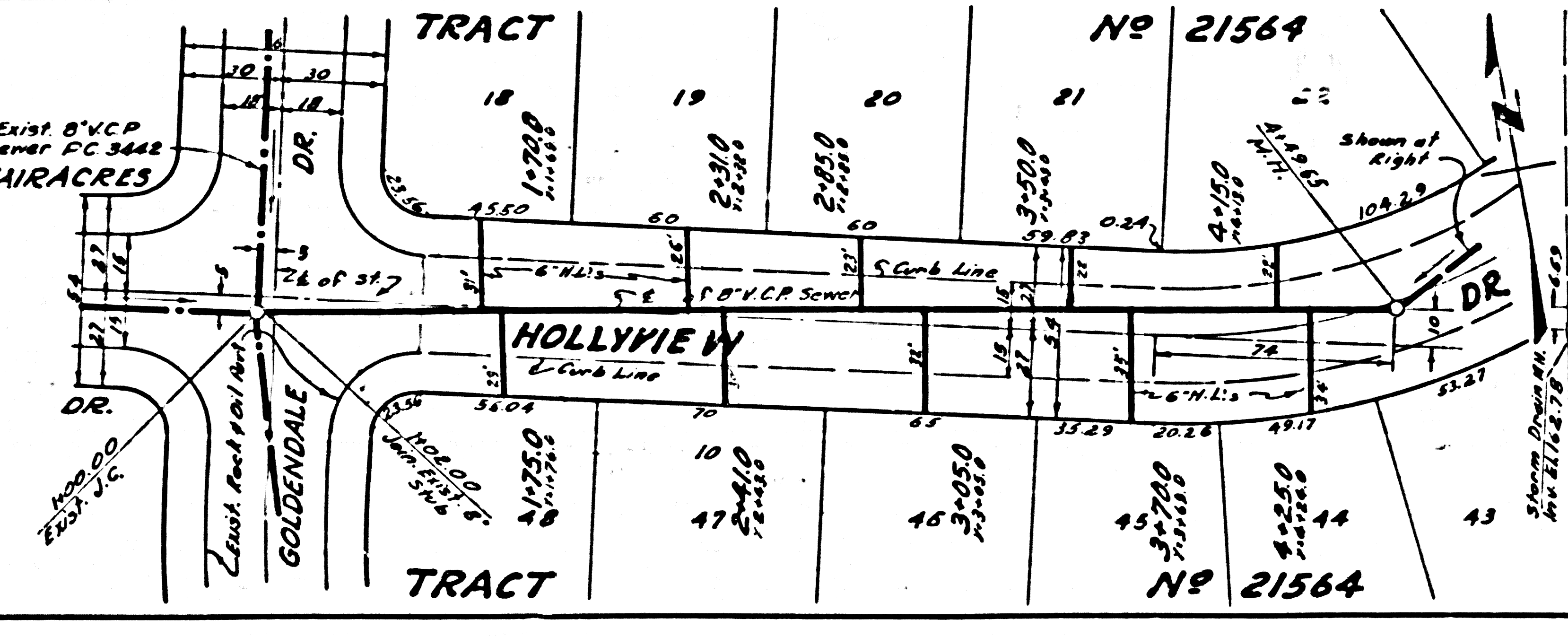
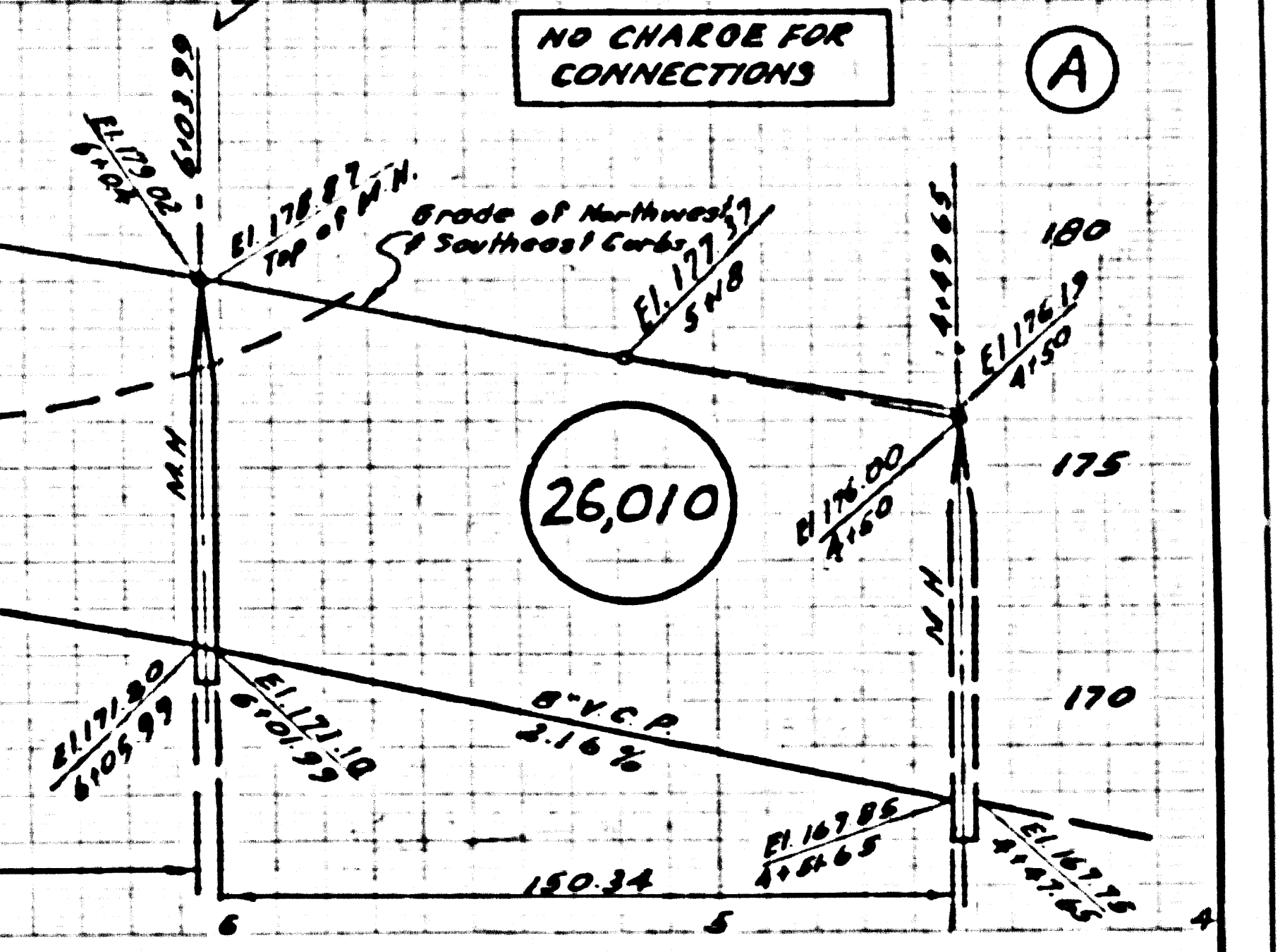
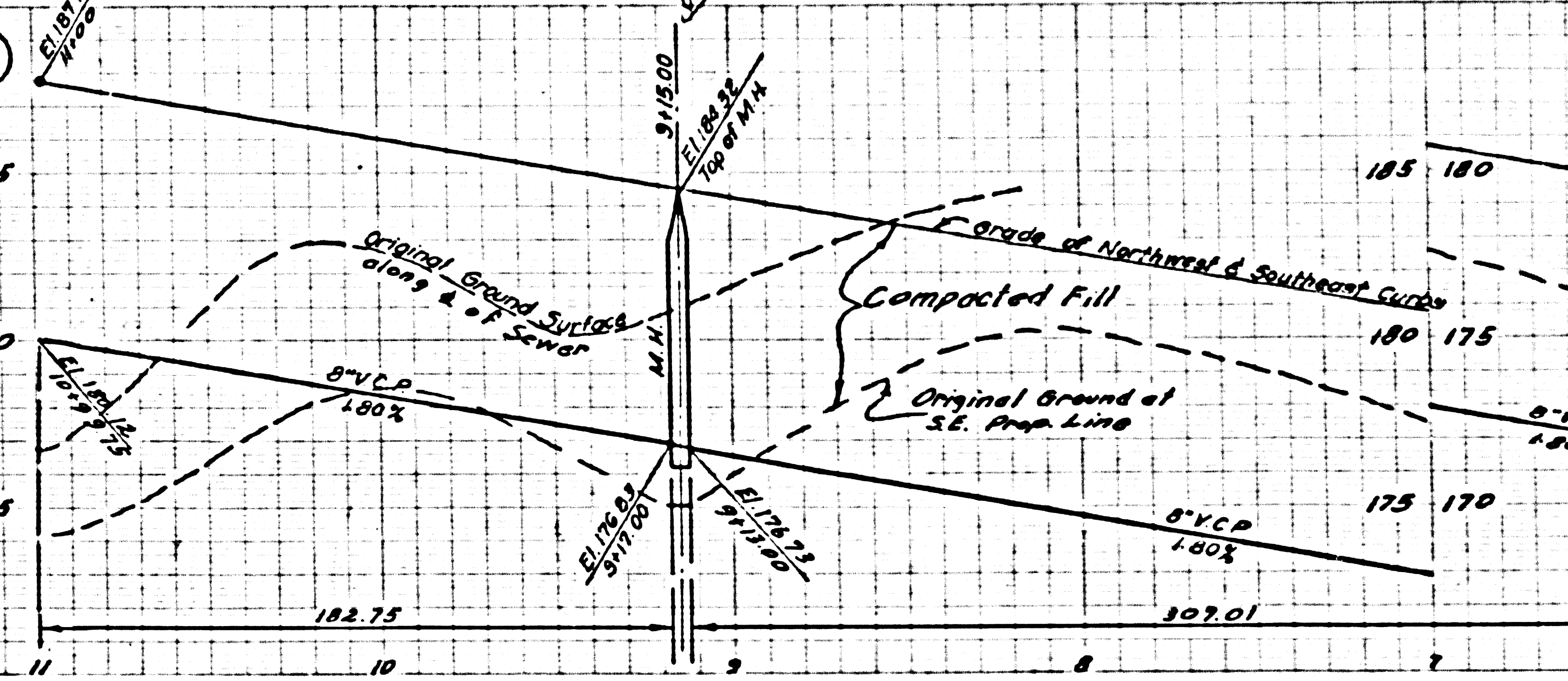
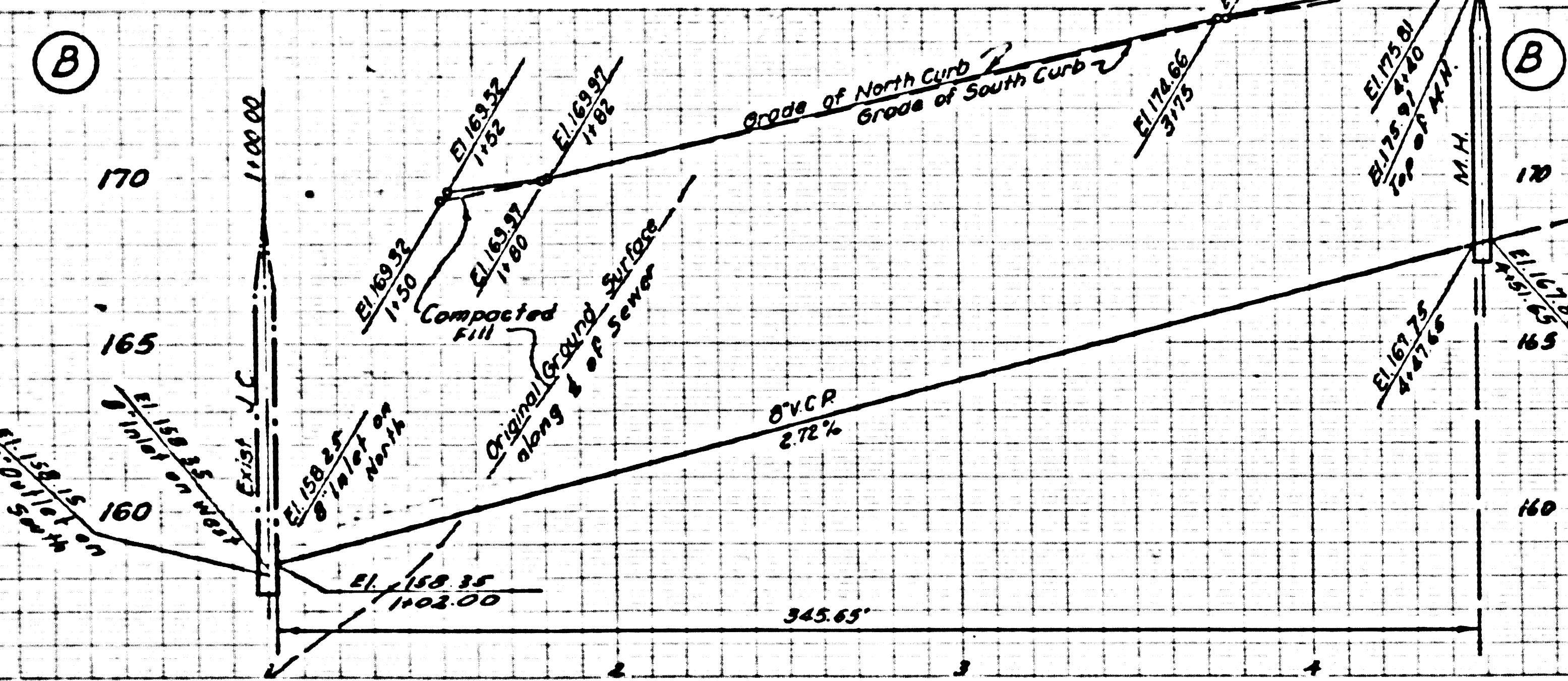
NO CHARGE FOR CONNECTIONS

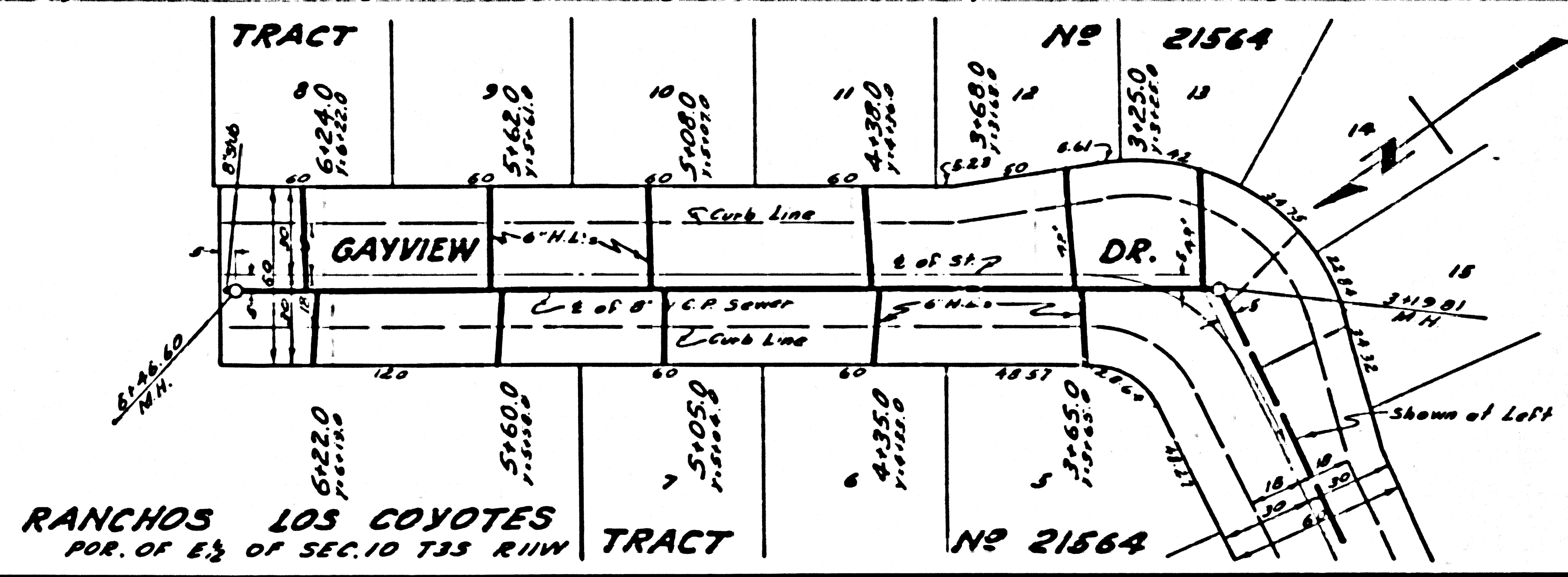
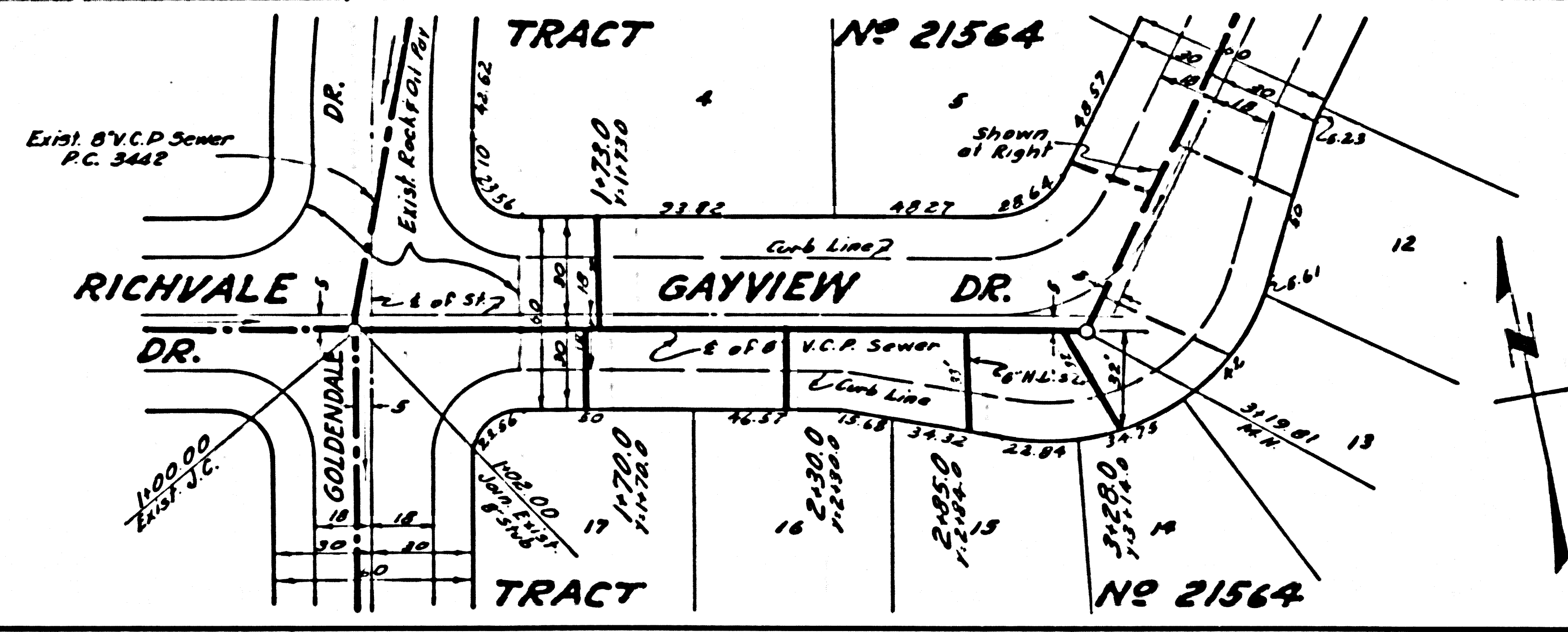
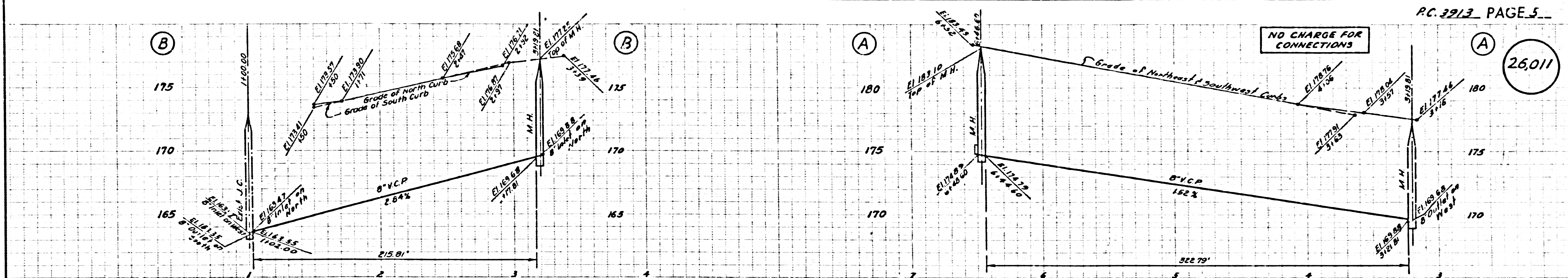
26,009



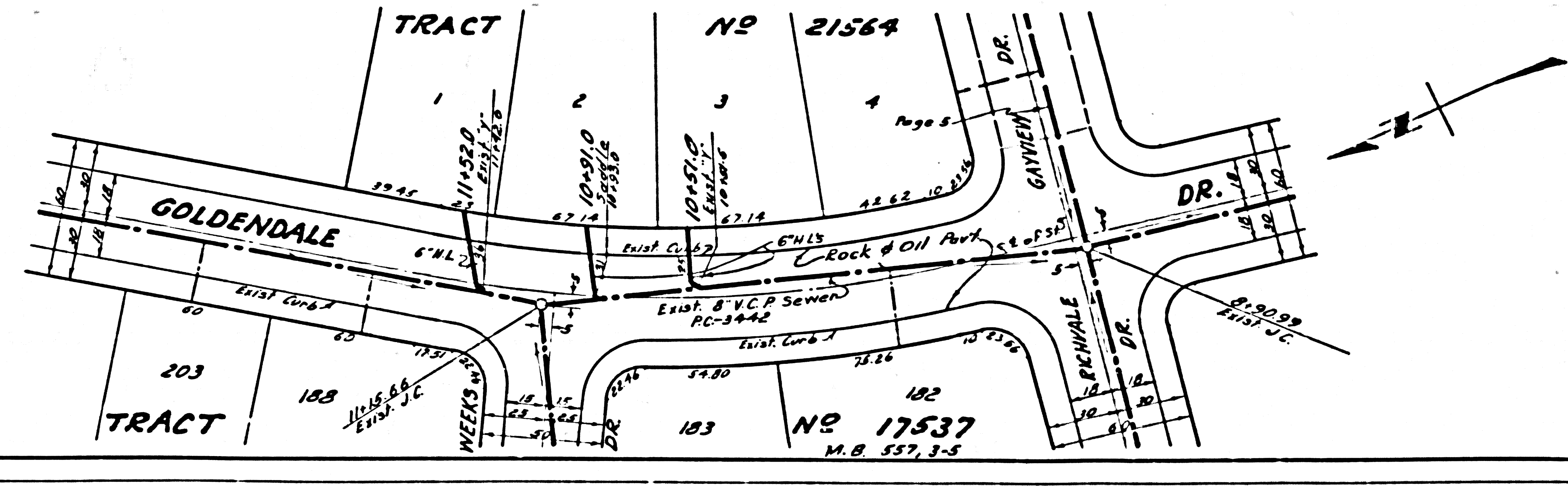
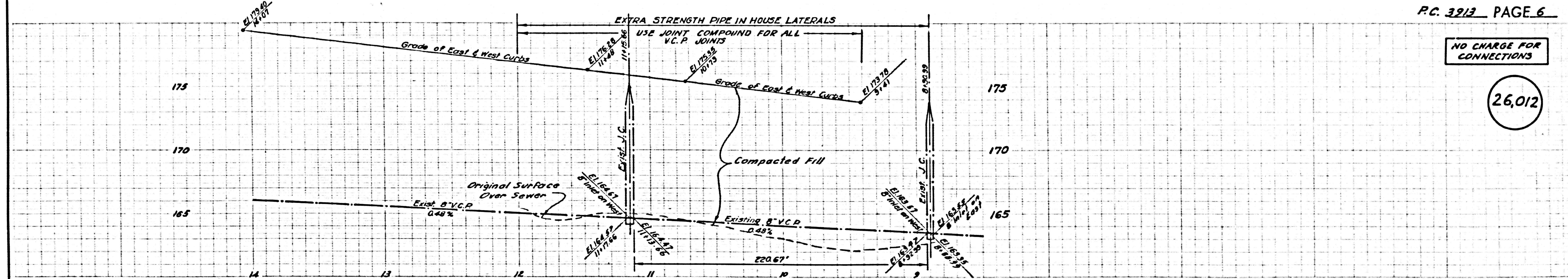
NO CHARGE FOR CONNECTIONS

26,010





RANCHOS LOS COYOTES
POR. OF E 1/2 OF SEC. 10 T3S R11W



TRACT NO 17537
M.B. 557, 3-5