

(A)

(A)

AVENUE

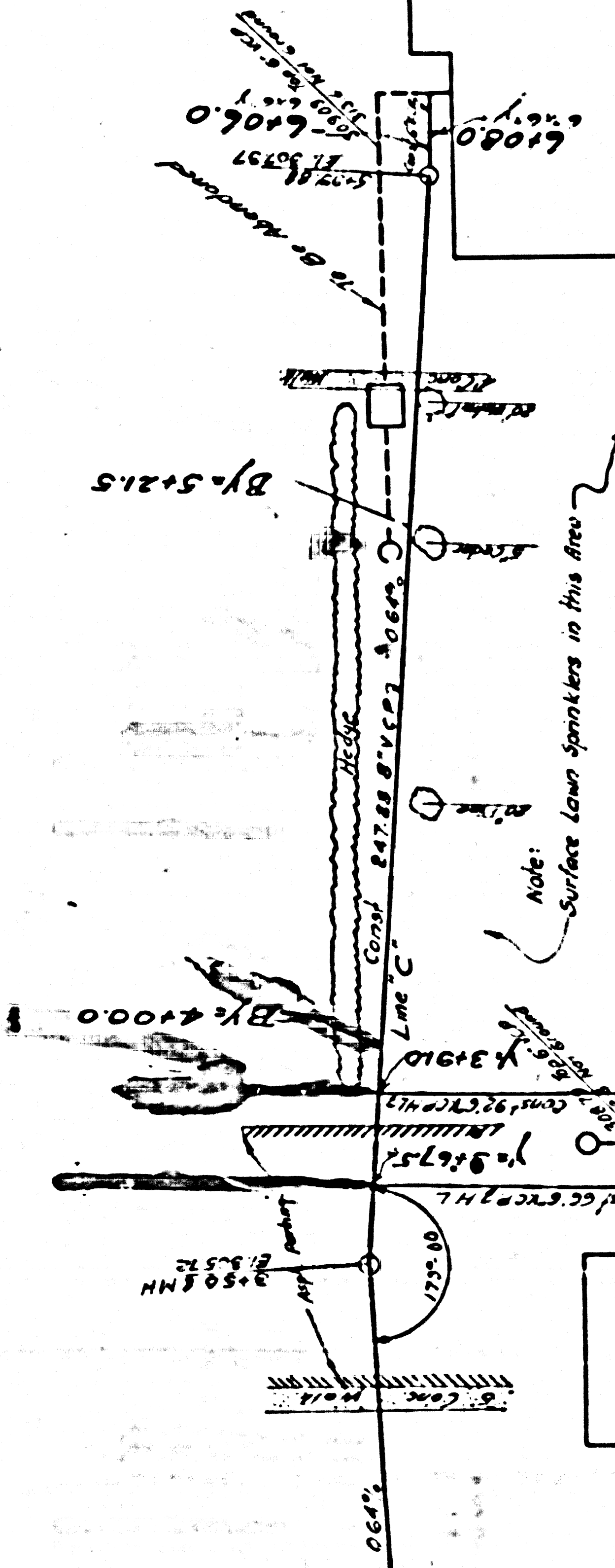
ROAD

KERWOOD ROAD

23,373

Edge of Existing Pavement

2%



Basement Elev 30.84

31346 FF

31347 FF

31348 FF

31349 FF

31350 FF

31351 FF

31352 FF

31353 FF

31354 FF

31355 FF

31356 FF

31357 FF

31358 FF

31359 FF

31360 FF

31361 FF

31362 FF

31363 FF

31364 FF

31365 FF

31366 FF

31367 FF

31368 FF

31369 FF

31370 FF

31371 FF

31372 FF

31373 FF

31374 FF

31375 FF

31376 FF

31377 FF

31378 FF

31379 FF

31380 FF

31381 FF

31382 FF

31383 FF

31384 FF

31385 FF

31386 FF

31387 FF

31388 FF

31389 FF

31390 FF

31391 FF

31392 FF

31393 FF

31394 FF

31395 FF

31396 FF

31397 FF

31398 FF

31399 FF

31400 FF

31401 FF

31402 FF

31403 FF

31404 FF

31405 FF

31406 FF

31407 FF

31408 FF

31409 FF

31410 FF

31411 FF

31412 FF

31413 FF

31414 FF

31415 FF

31416 FF

31417 FF

31418 FF

31419 FF

31420 FF

31421 FF

31422 FF

31423 FF

31424 FF

31425 FF

31426 FF

31427 FF

31428 FF

31429 FF

31430 FF

31431 FF

31432 FF

31433 FF

31434 FF

31435 FF

31436 FF

31437 FF

31438 FF

31439 FF

31440 FF

31441 FF

31442 FF

31443 FF

31444 FF

31445 FF

31446 FF

31447 FF

31448 FF

31449 FF

31450 FF

31451 FF

31452 FF

31453 FF

31454 FF

31455 FF

31456 FF

31457 FF

31458 FF

31459 FF

31460 FF

31461 FF

31462 FF

31463 FF

31464 FF

31465 FF

31466 FF

31467 FF

31468 FF

31469 FF

31470 FF

31471 FF

31472 FF

31473 FF

31474 FF

31475 FF

31476 FF

31477 FF

31478 FF

31479 FF

31480 FF

31481 FF

31482 FF

31483 FF

31484 FF

31485 FF

31486 FF

31487 FF

31488 FF

31489 FF

31490 FF

31491 FF

31492 FF

31493 FF

31494 FF

31495 FF

31496 FF

31497 FF

31498 FF

31499 FF

31500 FF

31501 FF

31502 FF

31503 FF

31504 FF

31505 FF

31506 FF

31507 FF

31508 FF

31509 FF

31510 FF

31511 FF

31512 FF

31513 FF

31514 FF

31515 FF

31516 FF

31517 FF

31518 FF

31519 FF

31520 FF

31521 FF

31522 FF

31523 FF

31524 FF

31525 FF

31526 FF

31527 FF

31528 FF

31529 FF

31530 FF

31531 FF

31532 FF

31533 FF

31534 FF

31535 FF

31536 FF

31537 FF

31538 FF

31539 FF

31540 FF

31541 FF

31542 FF

31543 FF

31544 FF

31545 FF

31546 FF

31547 FF

31548 FF

31549 FF

31550 FF

31551 FF

31552 FF

31553 FF

31554 FF

31555 FF

31556 FF

31557 FF

31558 FF

31559 FF

31560 FF

31561 FF

31562 FF

31563 FF

31564 FF

31565 FF

31566 FF

31567 FF

31568 FF

31569 FF

31570 FF

31571 FF

31572 FF

31573 FF

31574 FF

31575 FF

31576 FF

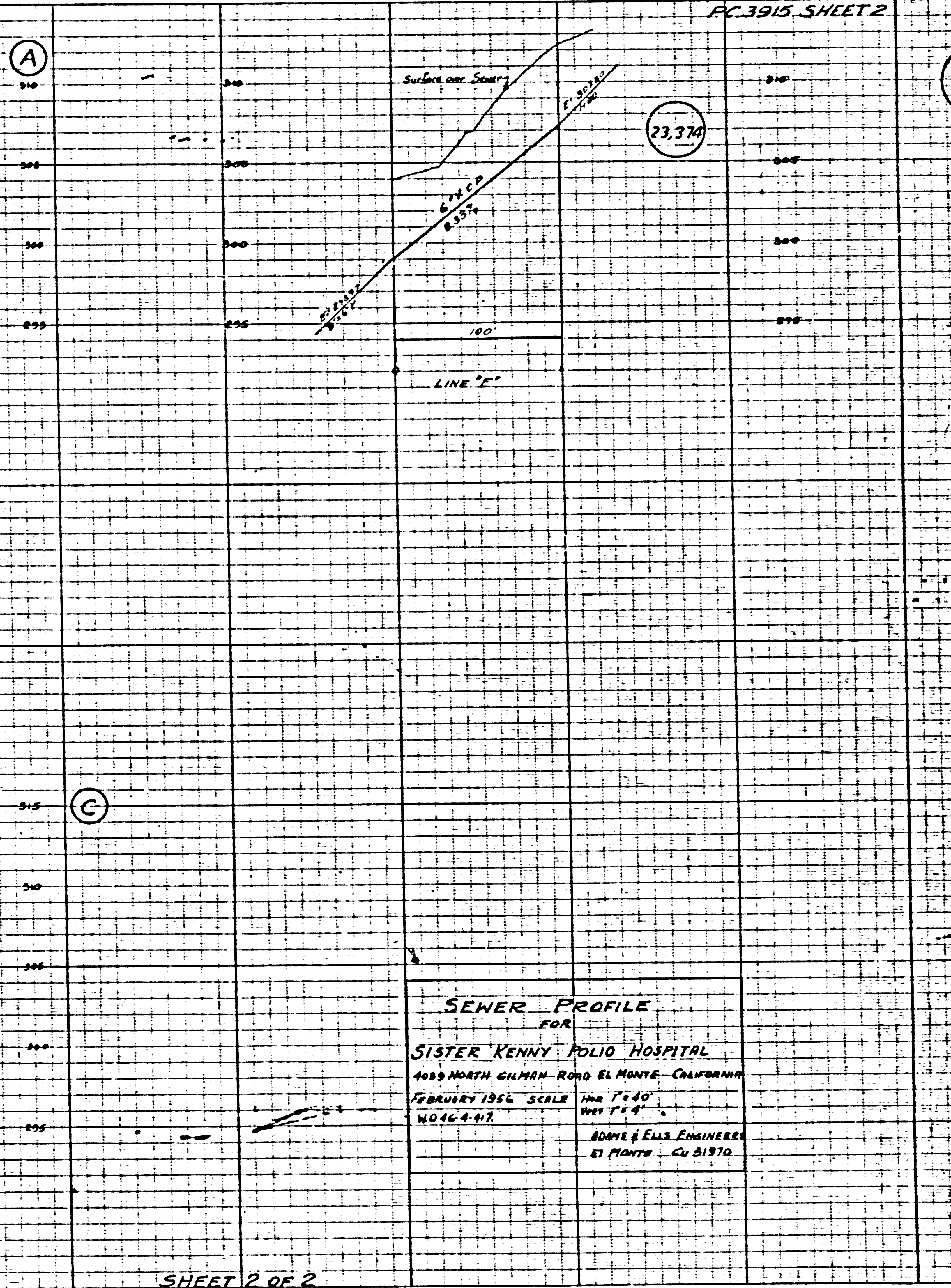
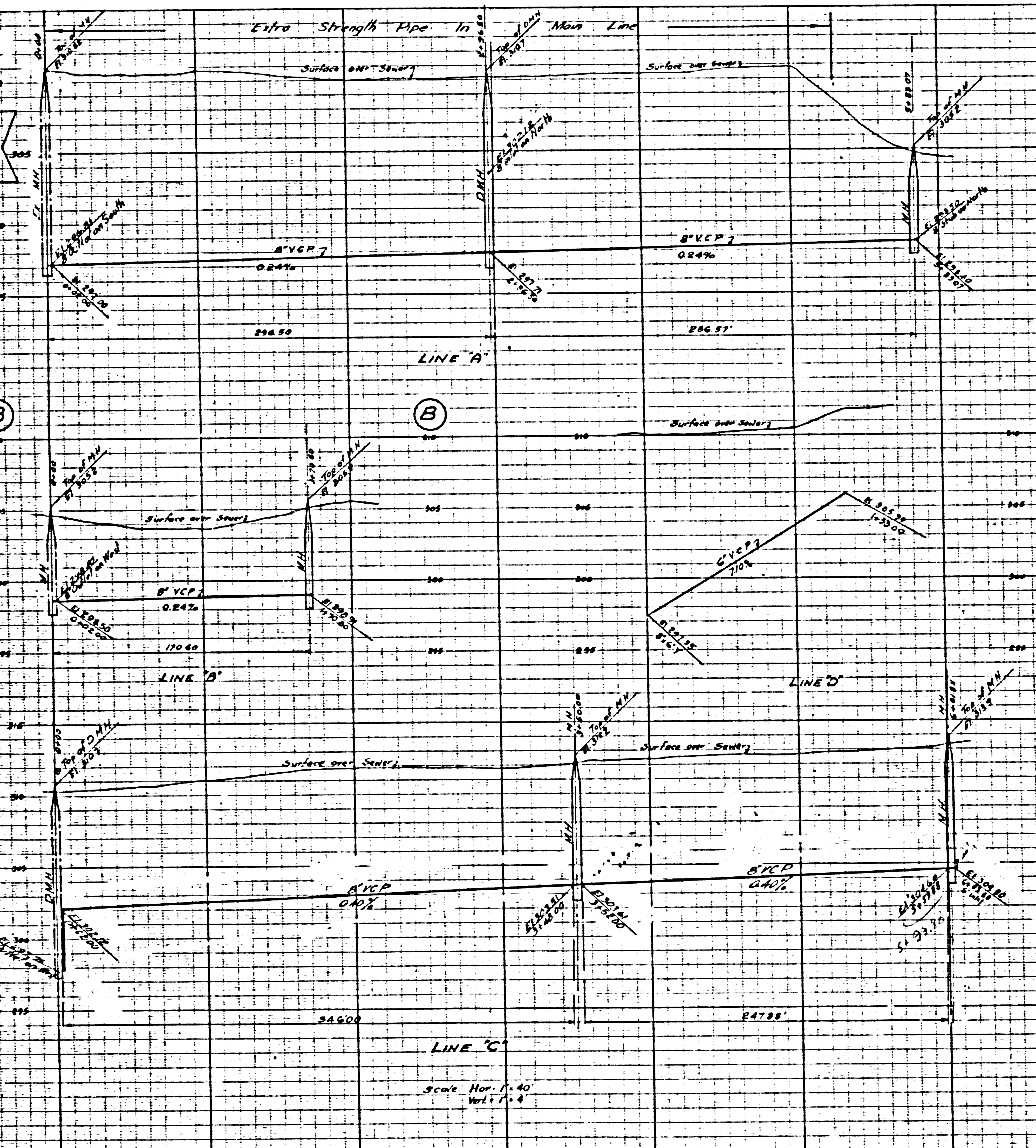
(C)

(A)

(A)

(C)

B.M. TA 163 CS
 NE 1/4 Sec. 34, T. 30 N. R. 34 E. S. 1 W. Co. 4
 Gilman Rd. & Kerkwood St. S.W. Cor.
 E.T. Spk in conc footing of Brick
 W.M. 22.5' at N End



SEWER PROFILE
 FOR
SISTER KENNY POLIO HOSPITAL
 4059 NORTH GILMAN ROAD EL MONTE - CALIFORNIA
 FEBRUARY 1956 SCALE 1" = 40'
 VERT. 1" = 4'

ADAMS & ELLS ENGINEERS
 87 MONTGOMERY - CU 51970

Scale Hor. 1" = 40'
 Vert. 1" = 4'

Just Above
 Correct