

**TEMPLE CITY BLDG DIST. No 5**

- NOTE:**
- Provide station on the property lines or property lines produced at right angles to the sewer line at the corner line of each manhole.
- No representative of the County Engineer will survey or layout any portion of the work.
- The owner or his authorized representative shall furnish the County Engineer with grade sheets and stations for all house laterals and Y branches and shall provide stakes for them at these proper locations with stationing plainly marked. Any change in location shall be requested in writing by the owner or his representative.
- No revisions shall be made in these plans without the approval of the County Engineer.
1. Use standard strength pipe except as noted.
  2. Use cement mortar for all vitrified clay pipe joints.
  3. Resurface all trench within paved area to meet L.A. County Road Dept or California State Highway Dept requirements in accordance with permit.
  4. Encase four feet of sewer at points of interference with poles, S-1119.
  5. All structures shall be brick sewer structures, S-104. Except as Noted.
  6. For allowable leakage test, use Formula No. 1, Spec's., Sec. 51.

PROFILE, ALIGNMENT AND GRADE OF  
**SANITARY SEWERS**  
TO BE CONSTRUCTED IN  
**ELSMORE DR.**

22400

PRIVATE CONTRACT NO. 3918  
W. S. 36  
1 SHEET: 1 PAGE  
MARCH, 1956  
PREPARED IN THE OFFICE OF  
H. W. FINLEY JR.

FOR LEGEND SEE PLAN NO. S-664

**NOTE:**

Grades to which this improvement is to be constructed are shown on plans and profiles. Grade counts for top of curbs, corner line of streets, or center line of alleys are shown by circles on profiles. At all points between designated points the grade shall be established so as to conform to a straight line drawn between said designated points.

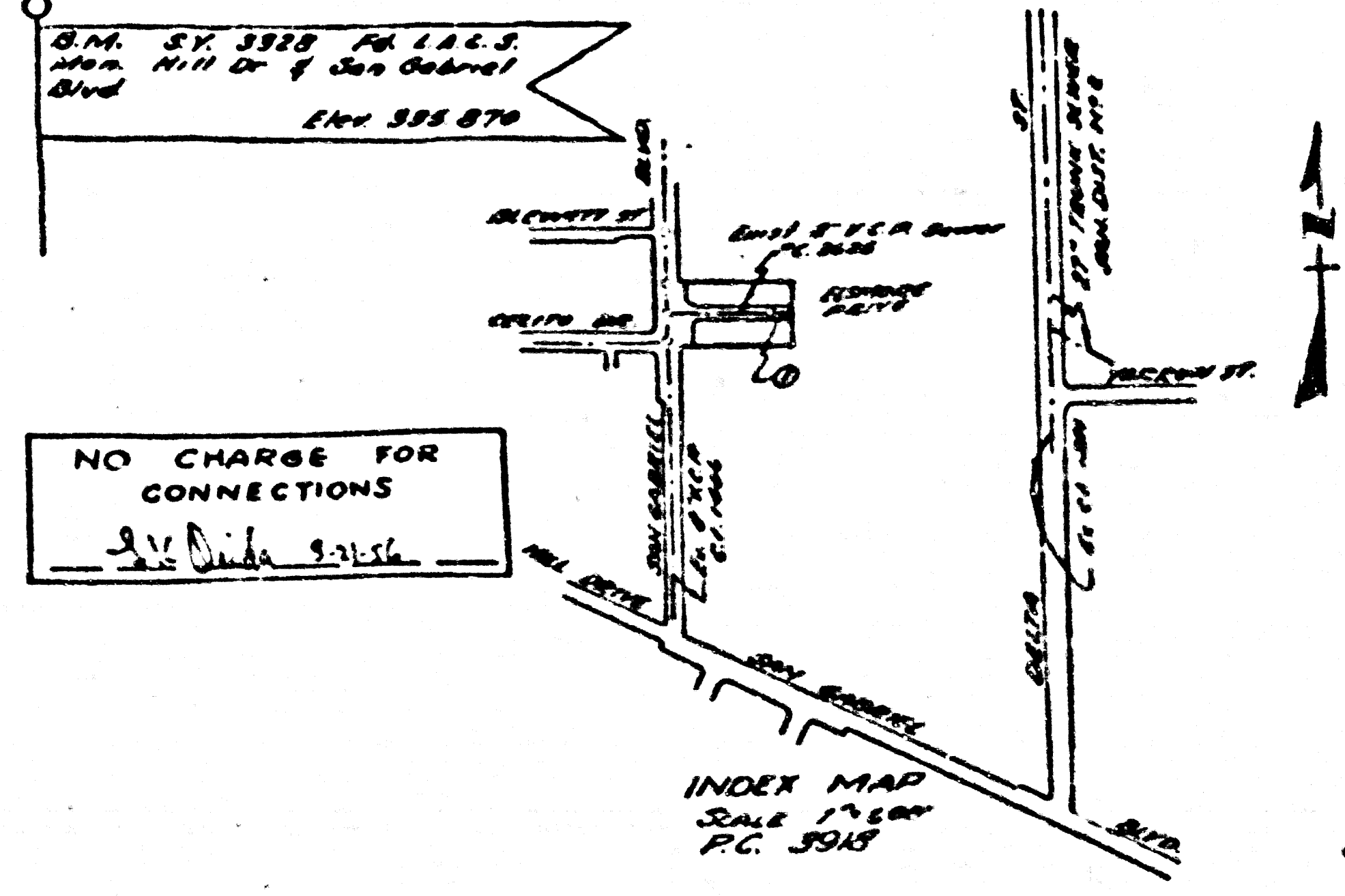
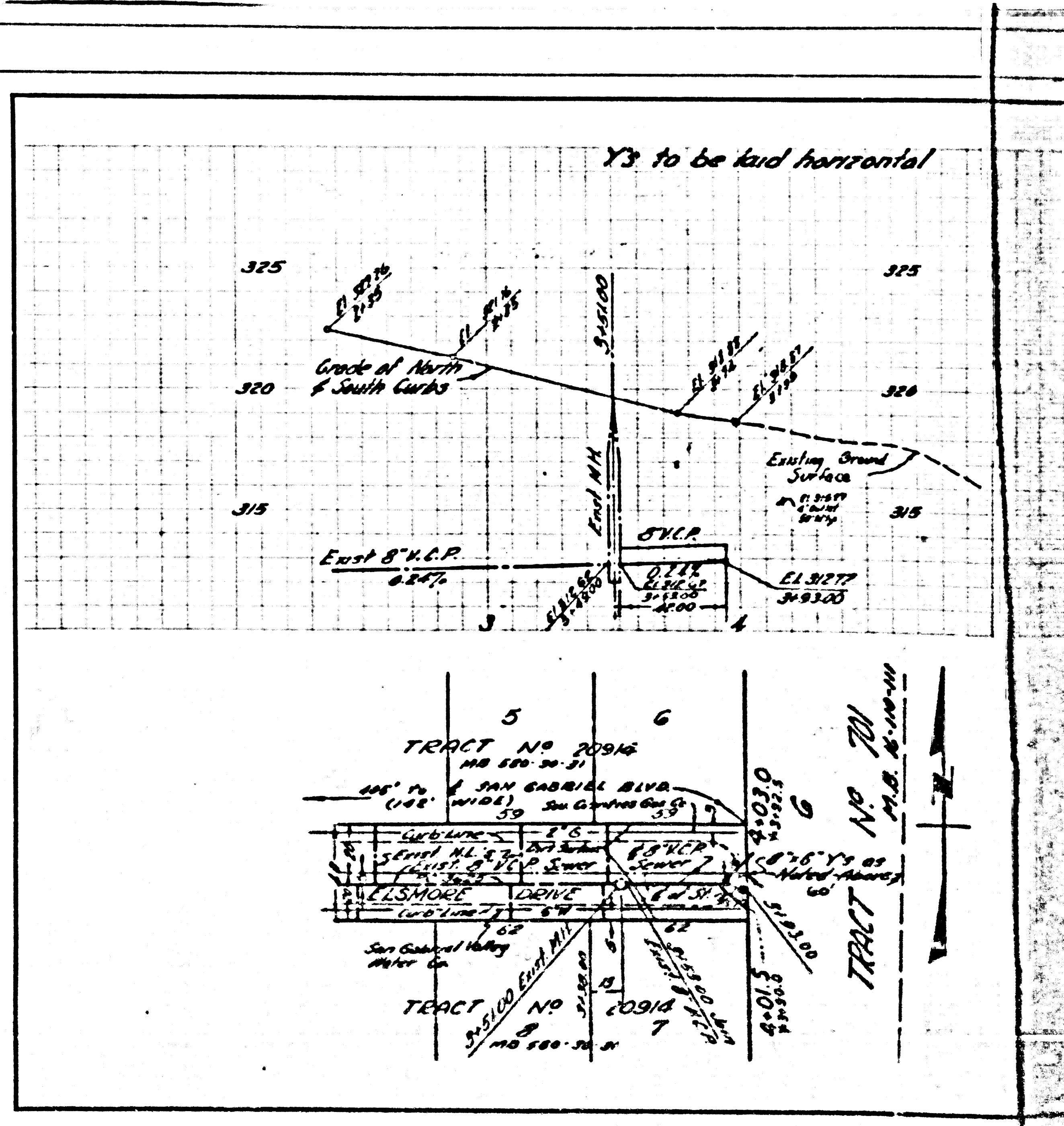
This drawing and the data hereon are hereby made a part of the specification. Work shall be constructed according to specifications on file in the office of the County Engineer and shall be prosecuted only in the presence of the County Engineer.

Before work can be started, the contractor must obtain a permit to excavate in County streets from the L.A. County Road Dept., 128 W. 2nd St., and make a deposit with the County Engineer, Room 324, 253 South Broadway, sufficient to cover the cost of construction inspection and record plans.

Approval of this plan by the County of Los Angeles does not constitute a representation as to the accuracy of the location of or the existence or non-existence of any underground utility, pipe, or structure within the limits of this project. This note applies to all sheets.

If work is to be done on a State Highway, a permit must be obtained from the State of California, Division of Highways, 120 South Spring Street.

COUNTY OF LOS ANGELES, CALIFORNIA  
Approved, John A. Lombie, County Engineer  
Approved, A. M. Ravn  
CHIEF ENGINEER, CO-SAN DIST. NO. 5  
Checked by *A.P. Collins*  
Checked by *J. Vanhook*  
Checked by *Rehman*  
Office of County Engineer, Box 6, P. M. 7862



INDEX MAP  
SCALE 1"=60'  
P.C. 3918

Checked A-12-56 *McGinn*