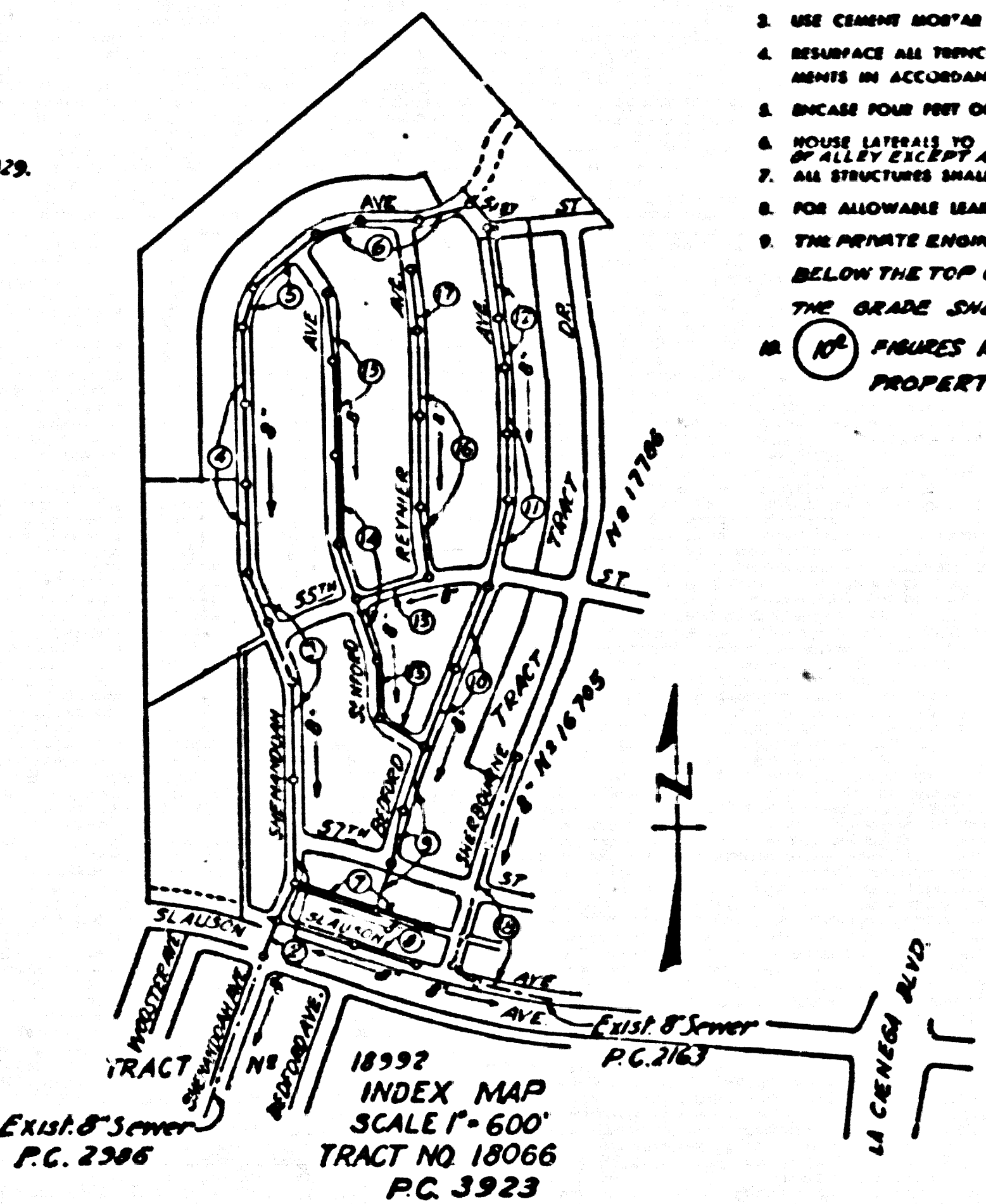


B.M. L.G. 754-360 B.M. A-14 Elev. 184.17 Bell Washer Set in lead 2' W of NW Return of N.E. Ramp off Slanson Ave. to La Cienega Blvd. L.A. F.B. 200-11 (Elev. 189.745) Rd Dept Elev.

Old L.A. City Datum - Add 5.575 for Road Department
Old L.A. City Datum - Add 5.775 for U.S.C. & G.S. See Level Datum of 1929.



LENNOX BLDG. DIST. NO. 7

- NOTES
- PROVIDE STAKES ON THE PROPERTY LINE OR PROPERTY LINES PRODUCED AT RIGHT ANGLES TO THE SEWER LINE AT THE CENTER LINE OF EACH MANHOLE.
 - NO REPRESENTATIVE OF THE COUNTY ENGINEER WILL SURVEY OR LAYOUT ANY PORTION OF THE WORK.
 - THE OWNER OR HIS AUTHORIZED REPRESENTATIVE SHALL FURNISH THE COUNTY ENGINEER WITH GRAB SHEETS AND STATION FOR ALL HOUSE LATERALS AND Y BRANCHES AND SHALL PROVIDE STAKES FOR THEM AT THEIR PROPER LOCATIONS WITH STATION AND PLAINLY MARKED. ANY CHANGE IN LOCATION SHALL BE REQUESTED IN WRITING BY THE OWNER OR HIS REPRESENTATIVE.
 - NO REVISIONS SHALL BE MADE IN THESE PLANS WITHOUT THE APPROVAL OF THE COUNTY ENGINEER.
 - USE STANDARD MANHOLE FRAMES AND COVERS, S.A. 117.
 - USE STANDARD STRENGTH PIPE EXCEPT AS NOTED.
 - USE CEMENT MORTAR FOR ALL WITHIN CLAY PIPE JOINTS, EXCEPT AS NOTED.
 - RESURFACE ALL TRENCH WITHIN PAVED AREA TO MEET L.A. COUNTY ROAD DEPT. OR CALIF. STATE HIGHWAY DEPT. REQUIREMENTS IN ACCORDANCE WITH PERMITS.
 - INCREASE FOUR FEET DEPTH OF SEWER AT POINTS OF INTERFERENCE WITH POLES, S.A. 119.
 - HOUSE LATERALS TO BE CONSTRUCTED WITH INVERTS AT PROPERTY LINE, 6 FEET BELOW CURB GRADE OR CENTERLINE OF ALLEY EXCEPT AS NOTED.
 - ALL STRUCTURES SHALL BE BRICK SEWER STRUCTURE, S.A. 104, EXCEPT AS NOTED.
 - FOR ALLOWABLE LEAKAGE TEST USE FORMULA NO. 1, SPEC. SEC. 2.
 - THE PRIVATE ENGINEER IS TO FURNISH THE HOUSE LATERAL DEPTH AT THE PROPERTY LINE BELOW THE TOP OF CURB ELEVATION OR CENTERLINE OF ALLEY FOR EACH HOUSE LATERAL, ON THE GRADE SHEET.
 - FIGURES IN CIRCLE AT END OF HOUSE LATERAL INDICATE DEPTH AT PROPERTY LINE BELOW CURB GRADE.

PROFILE ALIGNMENT AND GRADE OF P.C. 3923
SANITARY SEWERS PAGE 1
TO BE CONSTRUCTED IN DOUBLE SCALE
TRACT NO. 18066 (23,236)

PRIVATE CONTRACT NO. 3923
W.S. 24 (16)
9 SHEETS, 18 PAGES
SCALE: 1" = 10' HORIZ. 1" = 4' VERT. MAY, 1956
PREPARED IN THE OFFICES OF

BY *E.L. ...*
REG. C. E. NO. 1623
FOR LEGEND SEE PLAN NO. S-A-64

NOTE: GRADES TO WHICH THE IMPROVEMENT IS TO BE CONSTRUCTED ARE SHOWN ON PLANS AND PROFILE GRADE POINTS FOR TOP OF CURBS, CENTER LINE OF STREETS, OR CENTER LINE OF ALLEYS ARE SHOWN BY CIRCLES ON PROFILES AT ALL POINTS BETWEEN DESIGNATED POINTS THE GRADE SHALL BE ESTABLISHED SO AS TO CONFORM TO A STRAIGHT LINE DRAWN BETWEEN SAID DESIGNATED POINTS.
ELEVATIONS AND INVERTS ABOVE & OFFSETS FROM U.S.C. & G.S. SHALL BE TO OLD L.A. CITY DATUM OF 1929.
THIS DRAWING AND THE DATA HEREON ARE HEREBY MADE A PART OF THE SPECIFICATIONS.
WORK SHALL BE CONSTRUCTED ACCORDING TO SPECIFICATIONS ON FILE IN THE OFFICE OF THE COUNTY ENGINEER AND SHALL BE PROSECUTED ONLY ON THE PRESENCE OF THE COUNTY ENGINEER.
BEFORE WORK CAN BE STARTED, THE CONTRACTOR MUST OBTAIN A PERMIT TO EXCAVATE IN COUNTY STREETS FROM THE L.A. COUNTY ROAD DEPT. USE OF THIS PERMIT AND A REPORT WITH THE COUNTY ENGINEER, ROOM 134 MAIN AMERICAN BUILDING, 332 S.D. BROADWAY SUFFICIENT TO COVER THE COST OF CONSTRUCTION INSPECTION AND RECORD PLANS.
APPROVAL OF THIS PLAN BY THE COUNTY OF LOS ANGELES DOES NOT CONSTITUTE A REPRESENTATION AS TO THE ACCURACY OF THE LOCATION OF OR THE EXISTENCE OR NON-EXISTENCE OF ANY UNDERGROUND UTILITY PIPE, OR STRUCTURE WITHIN THE LIMITS OF THIS PROJECT. THIS NOTE APPLIES TO ALL PAGES.
IF WORK IS TO BE DONE ON A STATE HIGHWAY, A PERMIT MUST BE OBTAINED FROM THE STATE OF CALIFORNIA, DIVISION OF HIGHWAYS, 120 SOUTH SPRING STREET.

REVISION APPROVED: *S.K. ...*
OFFICE OF COUNTY ENGINEER
REV. 6-5-56

BY *A.P. ...*
SANITATION ENGINEER

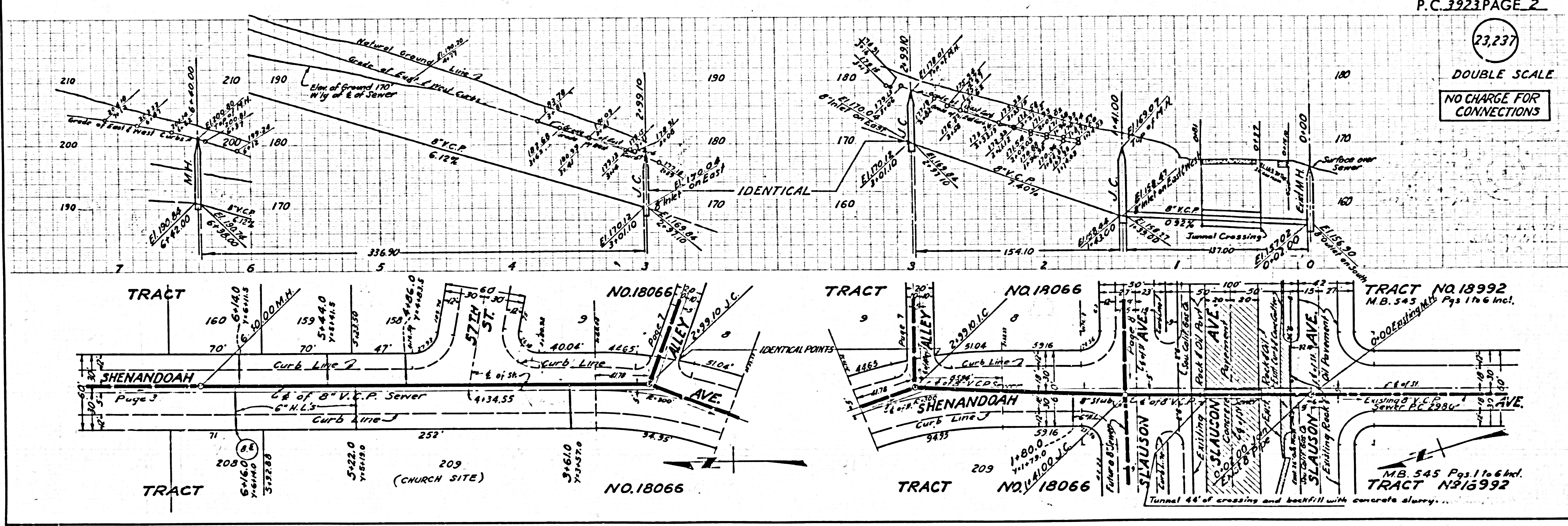
COUNTY OF LOS ANGELES, CALIFORNIA
APPROVED, JOHN A. LAMBE, COUNTY ENGINEER
APPROVED, A. M. RAWN, CHIEF ENGINEER
BY *A.P. ...*
OFFICE ENGINEER
CHECKED BY *S.K. ...*
OFFICE OF COUNTY ENGINEER, REV. C. E. NO. 2466

NO CHARGE FOR CONNECTIONS
227 ...

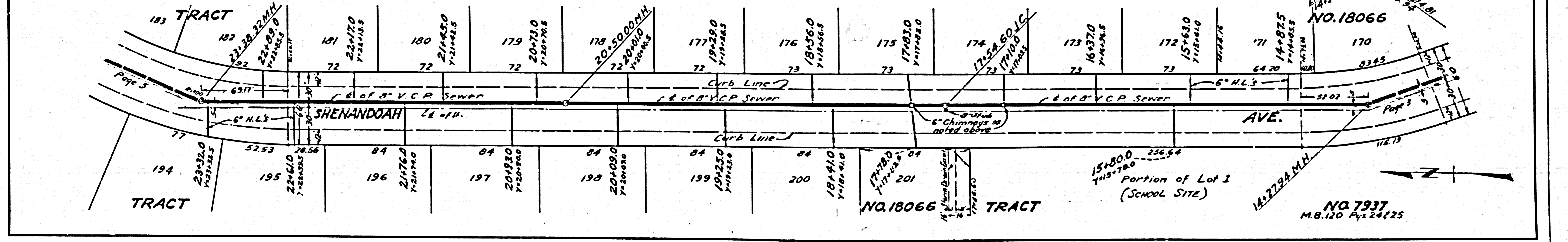
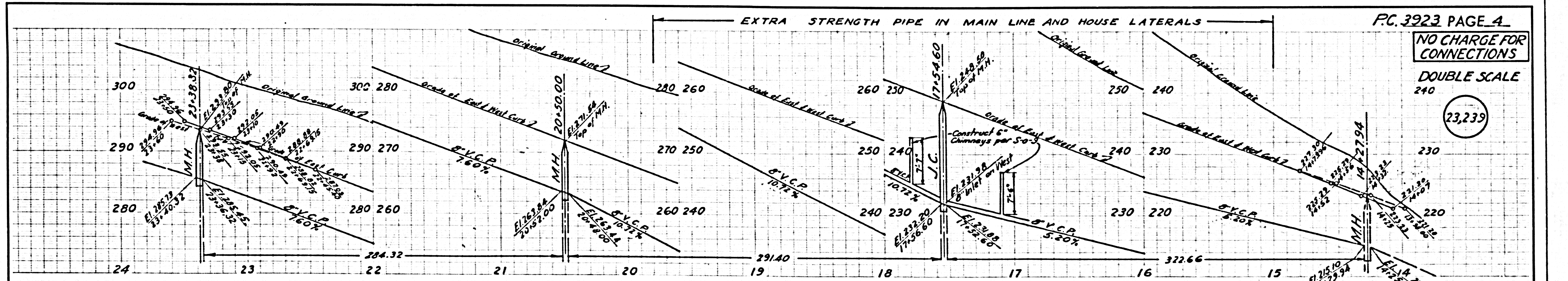
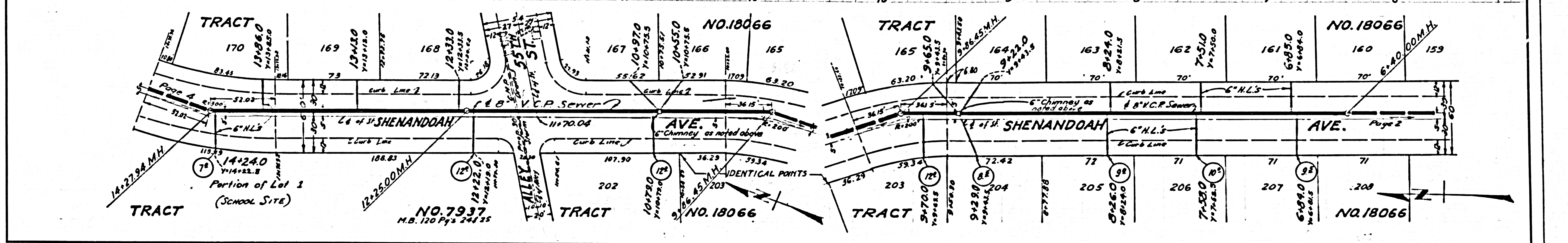
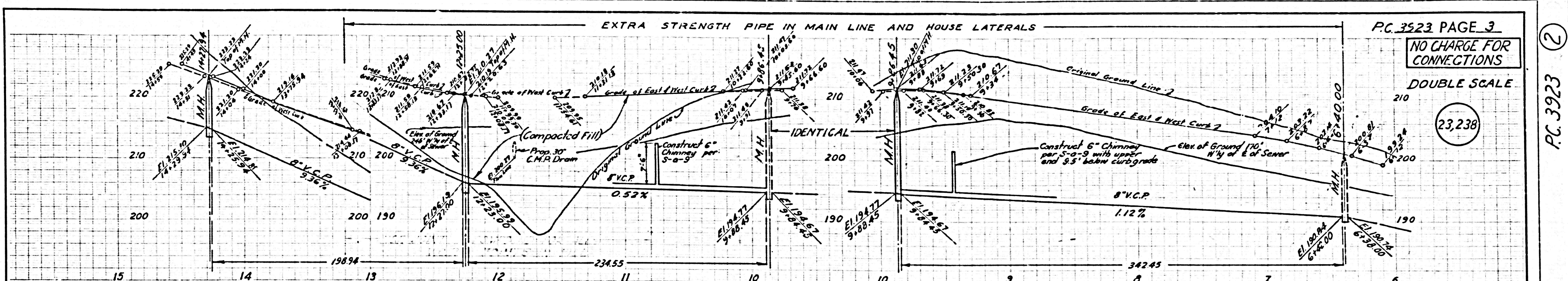
Checked 5-6-56 M. ...

P.C. 3923 PAGE 2

(23,237)
DOUBLE SCALE
NO CHARGE FOR CONNECTIONS



M.B. 545 Pgs. 1 to 6 incl.
TRACT NO. 186992

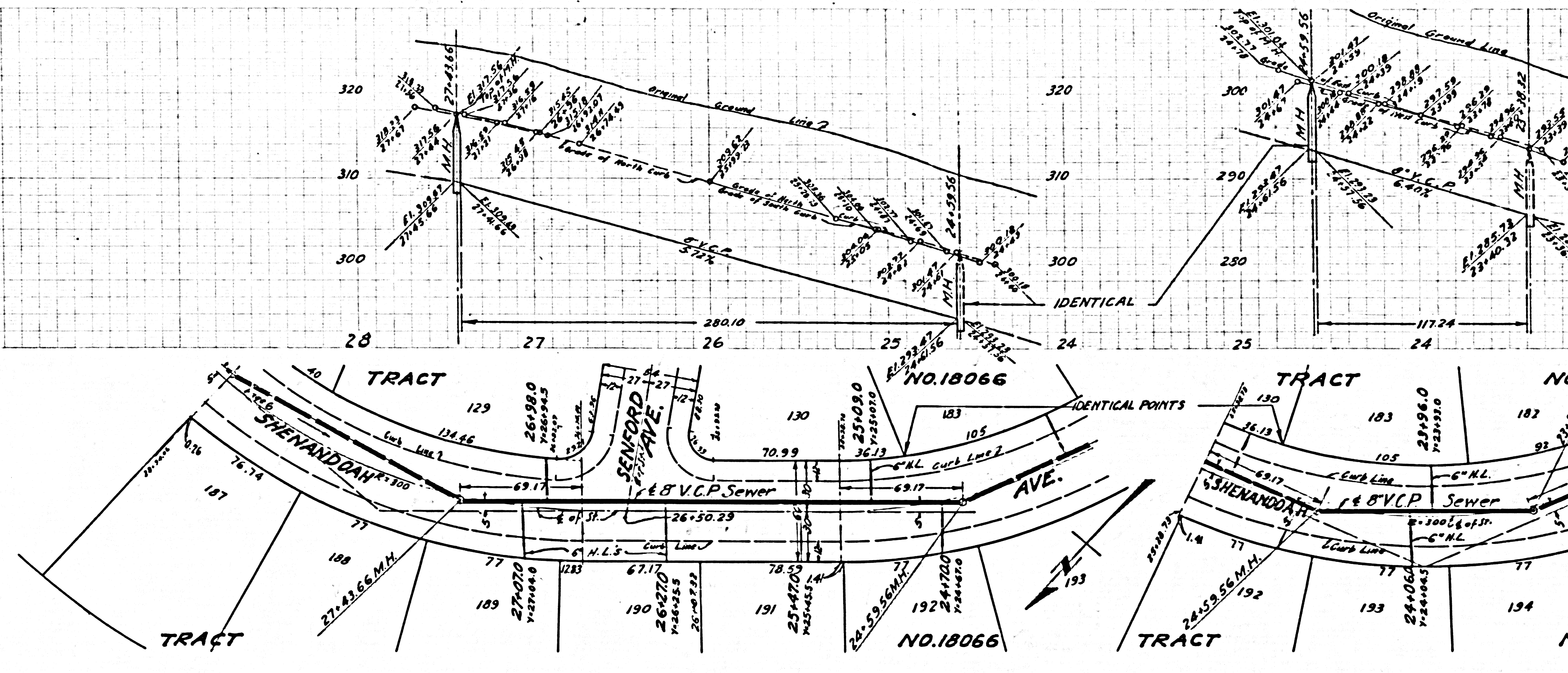


PC. 3923 2

NO CHARGE FOR CONNECTIONS
DOUBLE SCALE

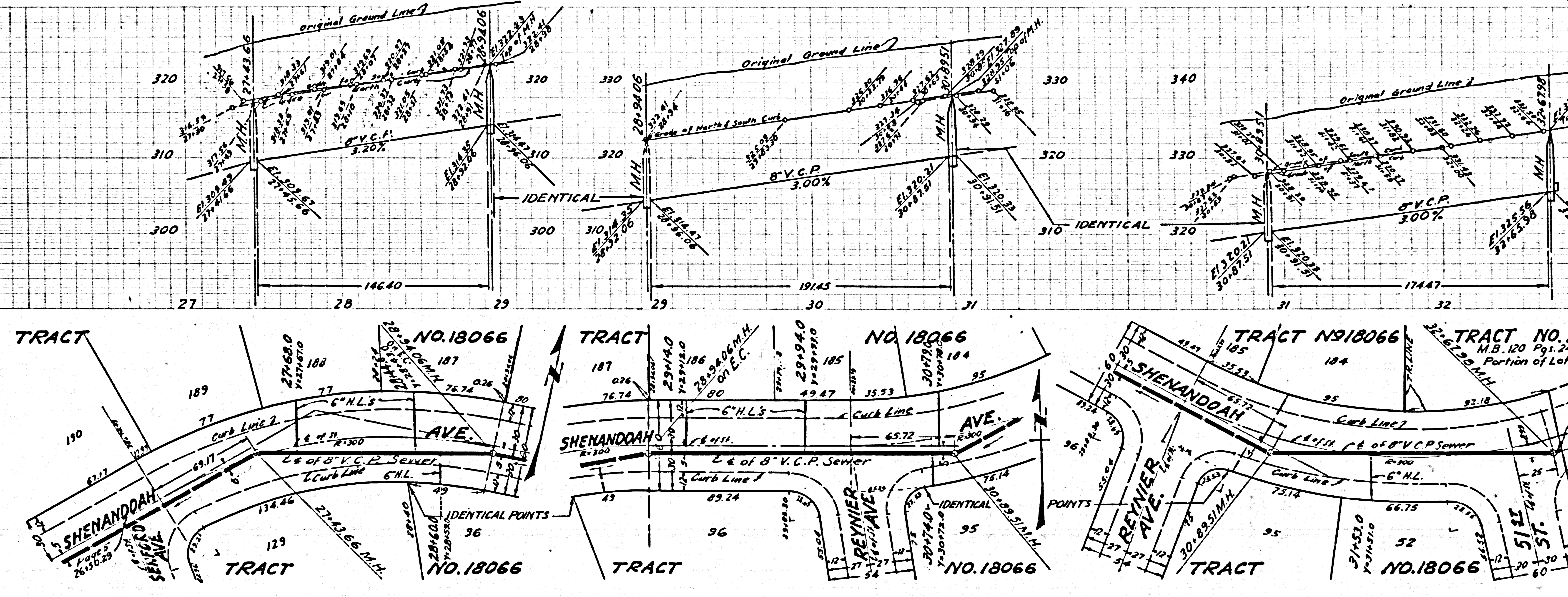
23,240

3
P.C. 3923



NO CHARGE FOR CONNECTIONS
DOUBLE SCALE

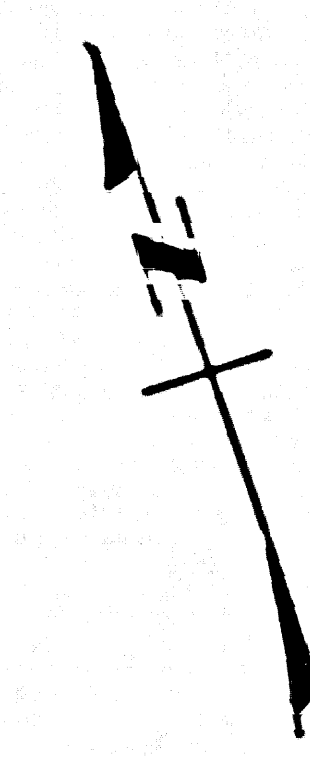
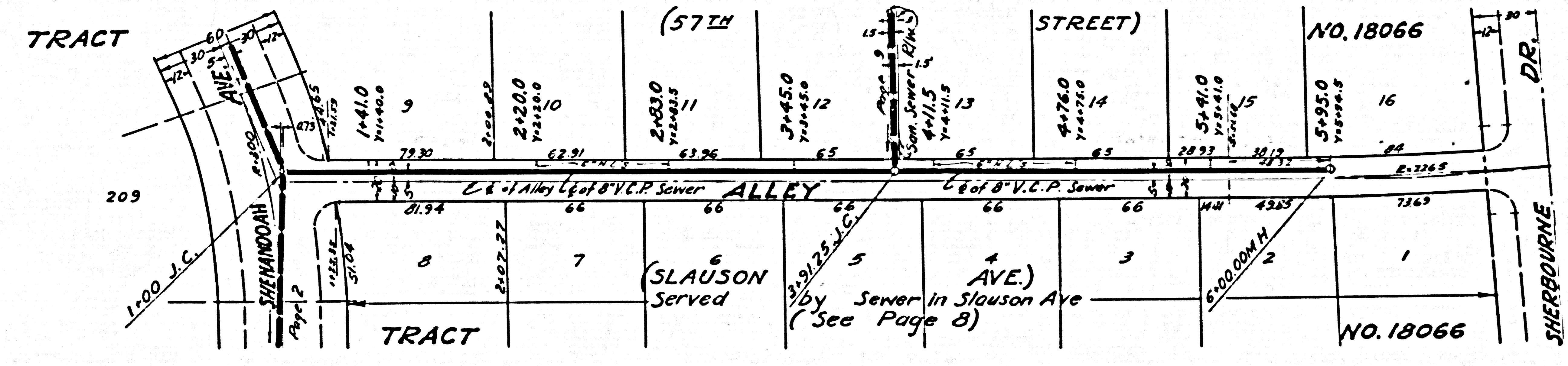
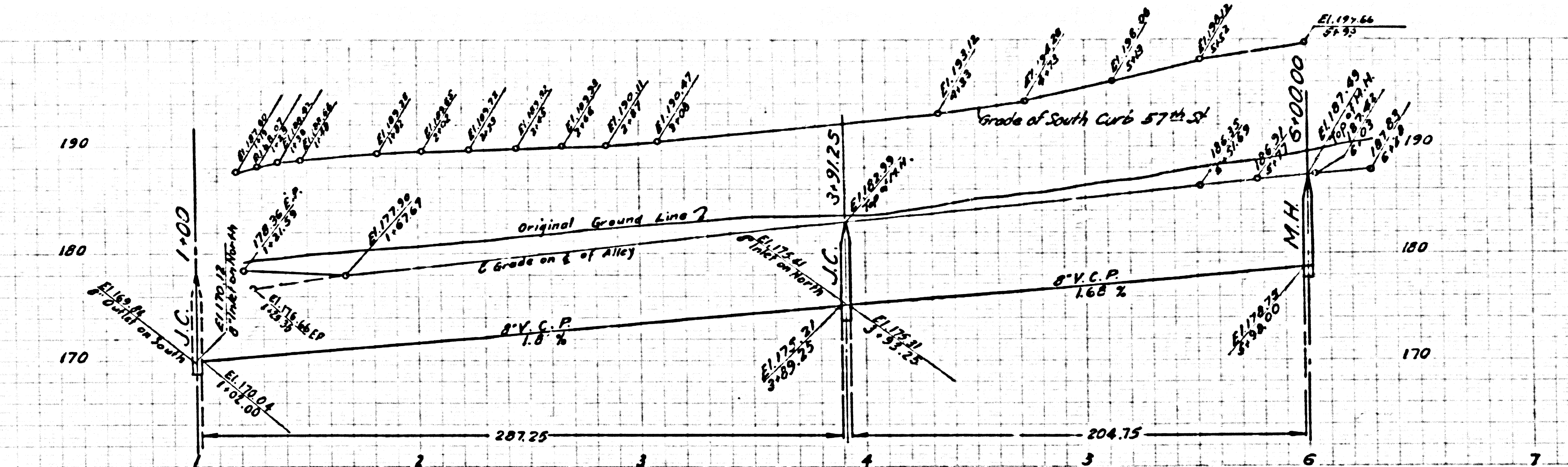
23,241



NO CHARGE FOR CONNECTIONS

DOUBLE SCALE

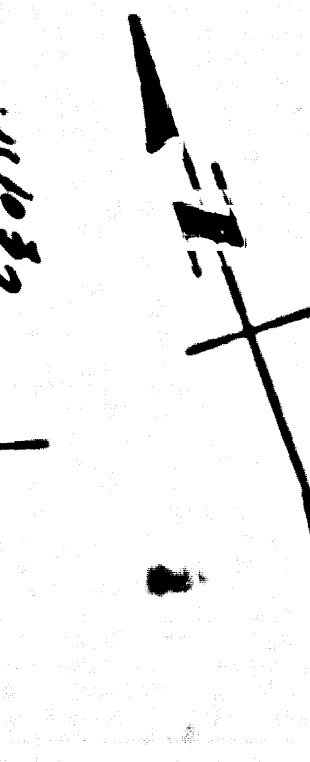
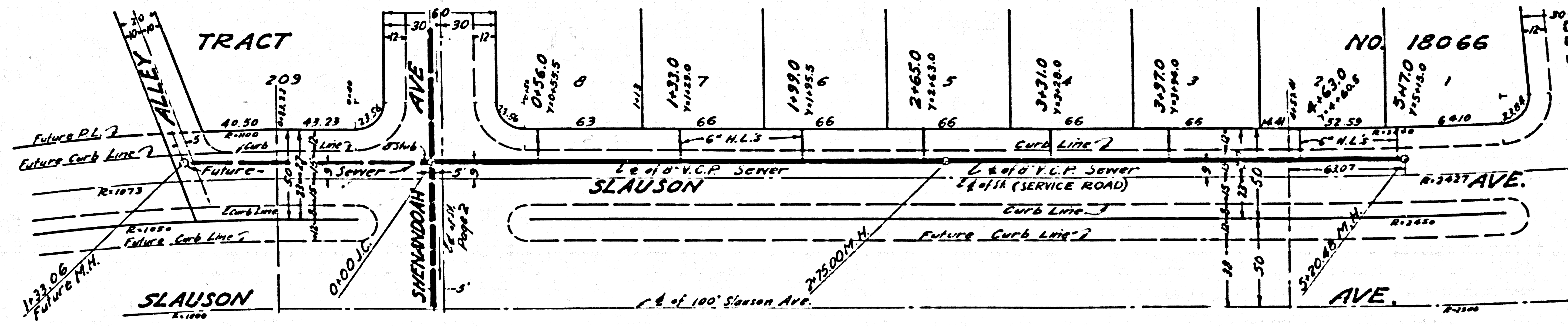
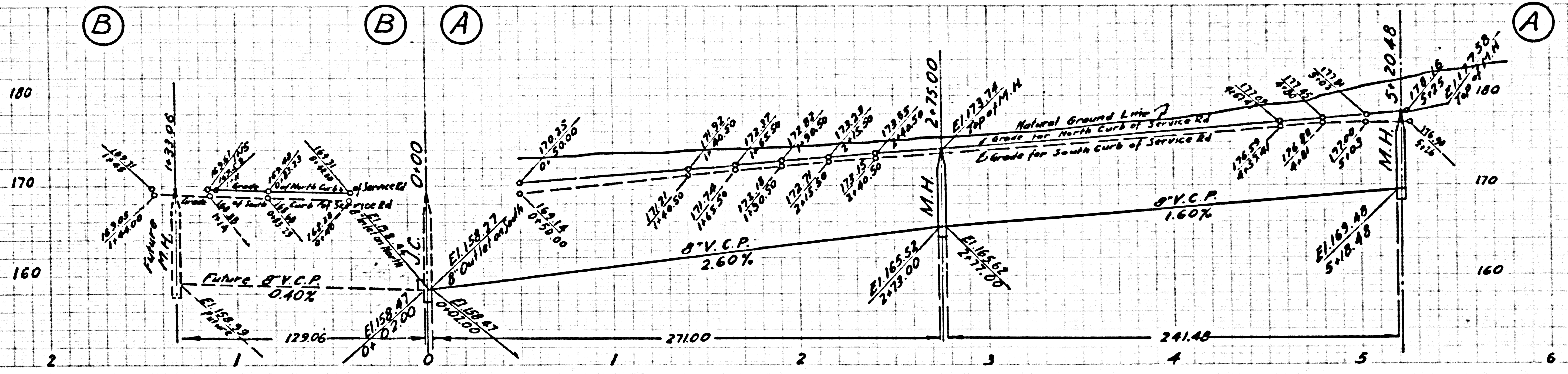
23,242

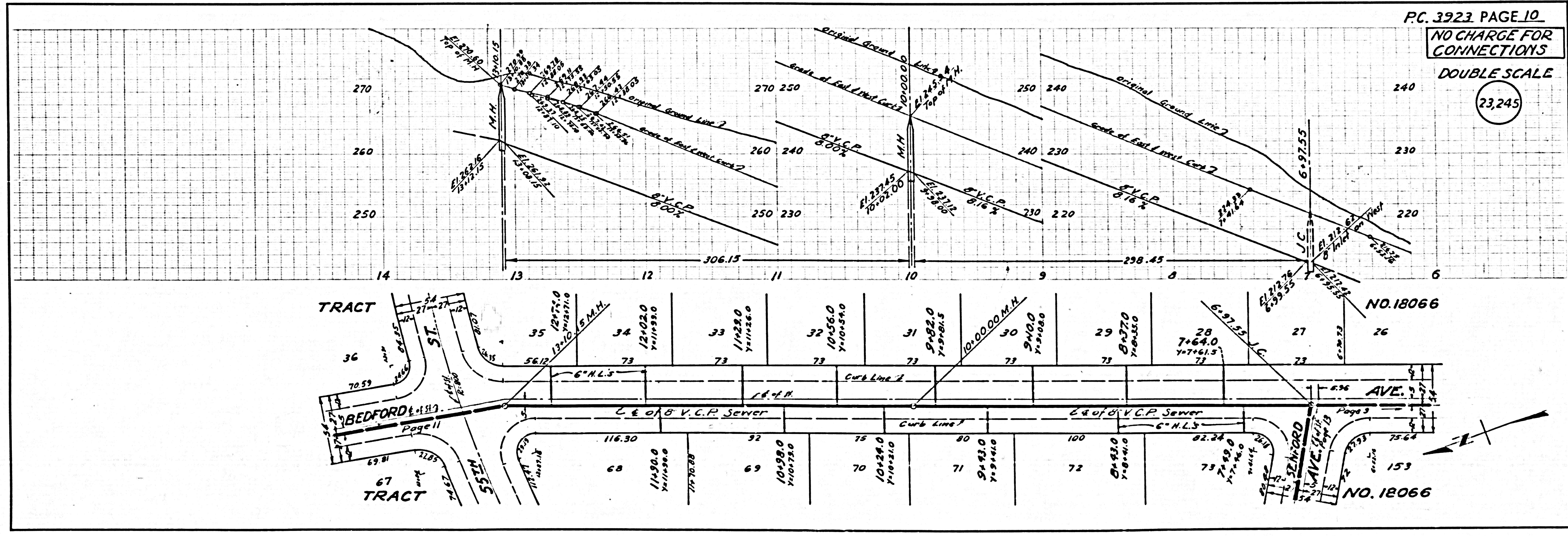
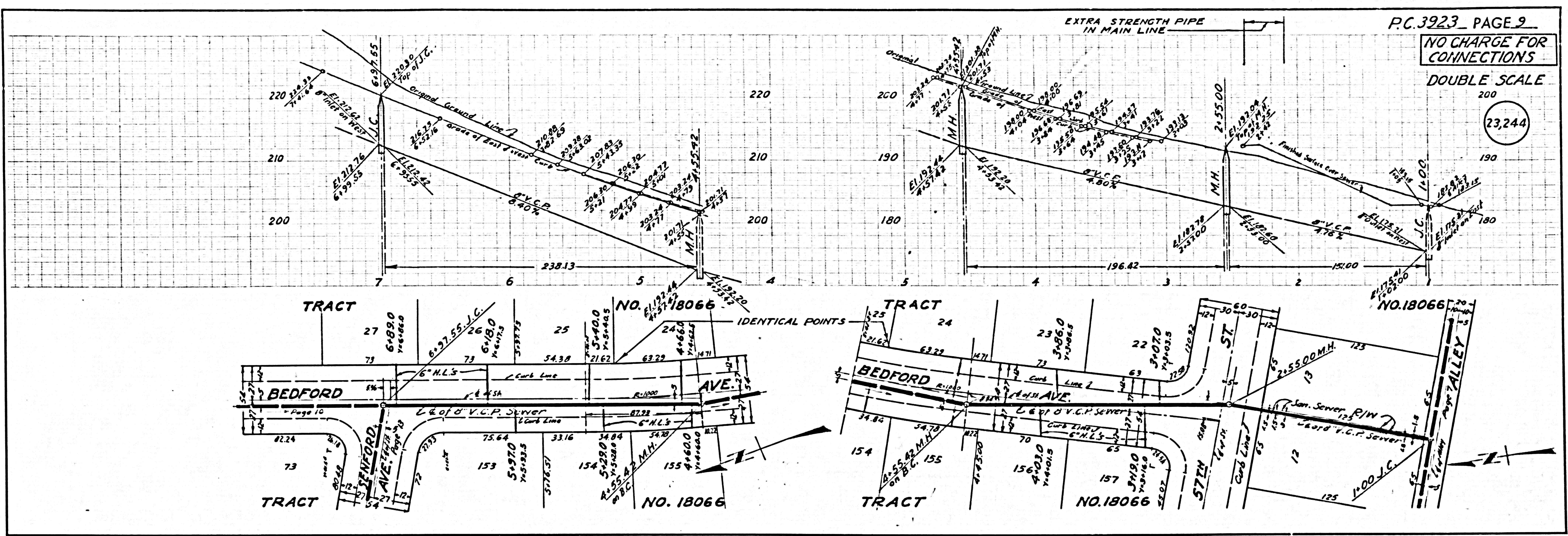


NO CHARGE FOR CONNECTIONS

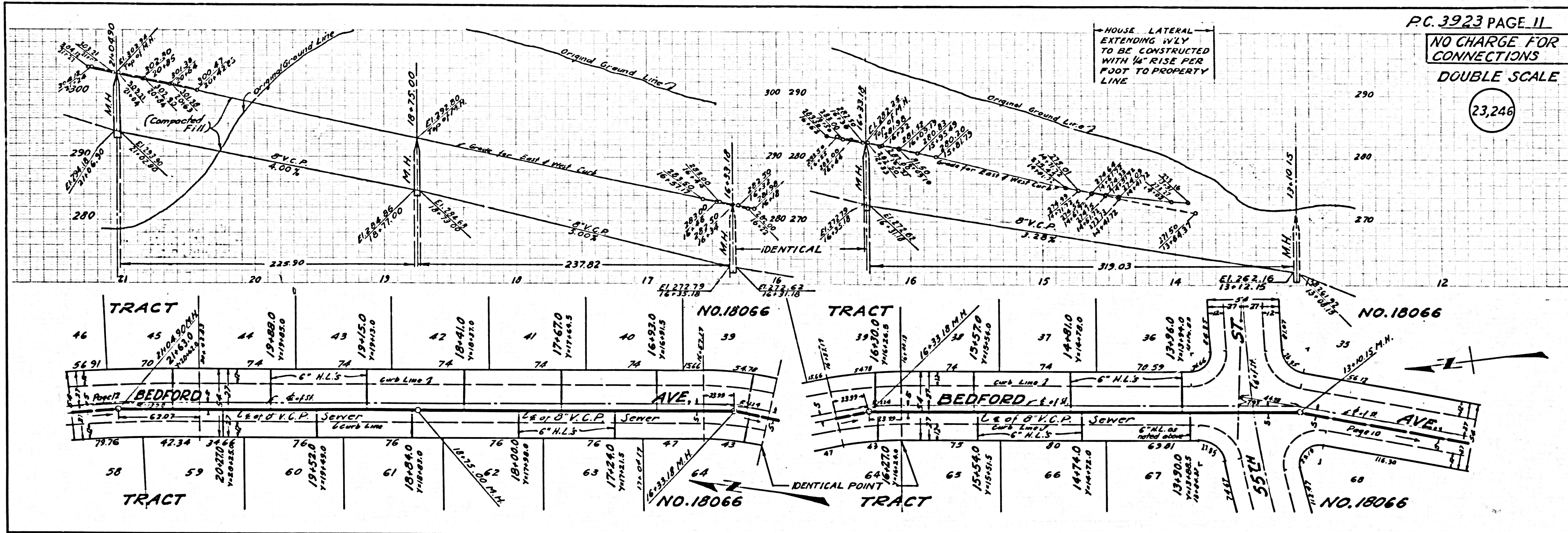
DOUBLE SCALE

23,243





P.C. 3923 5

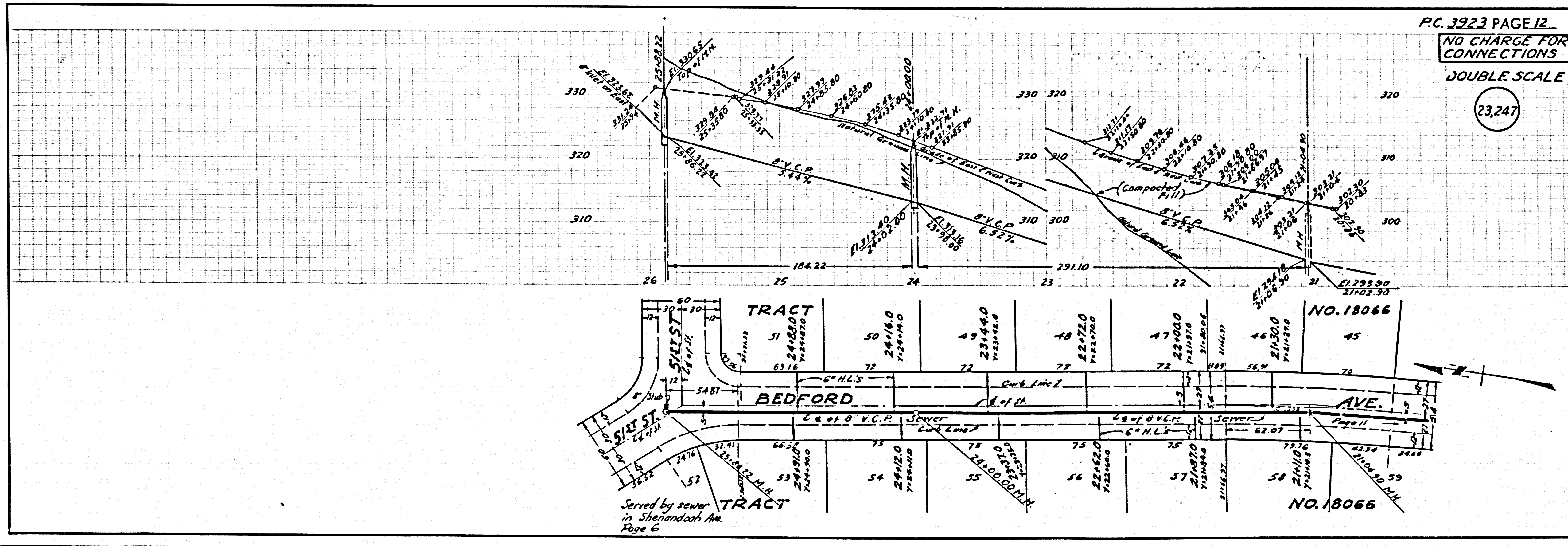


P.C. 3923 PAGE 11

NO CHARGE FOR CONNECTIONS
DOUBLE SCALE

23,246

6
P.C. 3923



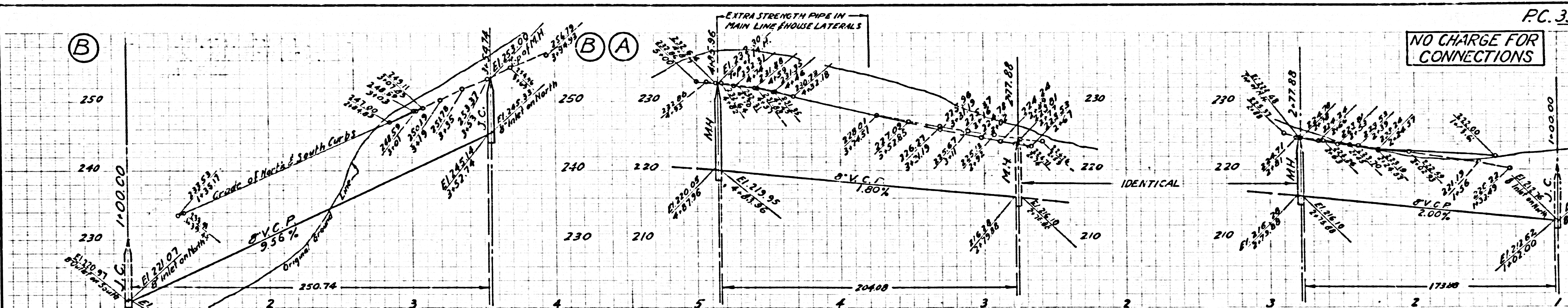
P.C. 3923 PAGE 12

NO CHARGE FOR CONNECTIONS
DOUBLE SCALE

23,247

Served by sewer in Sherandoah Ave
Page 6

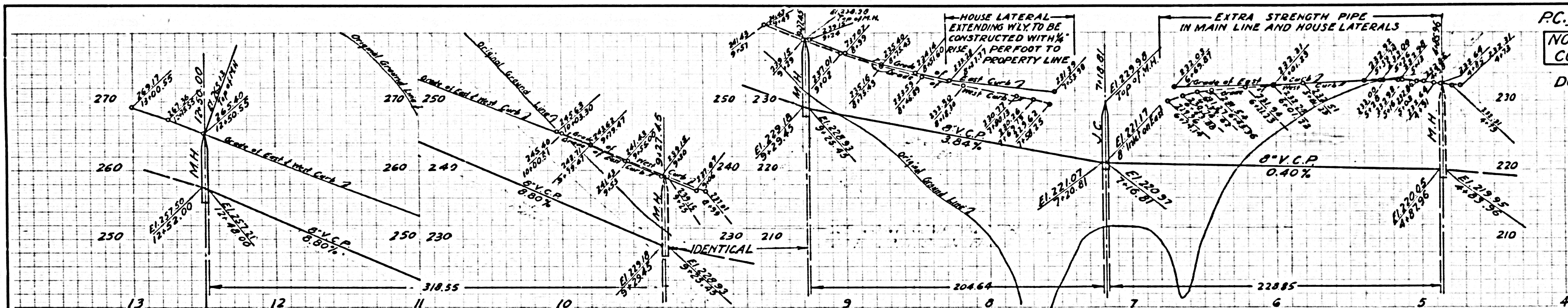
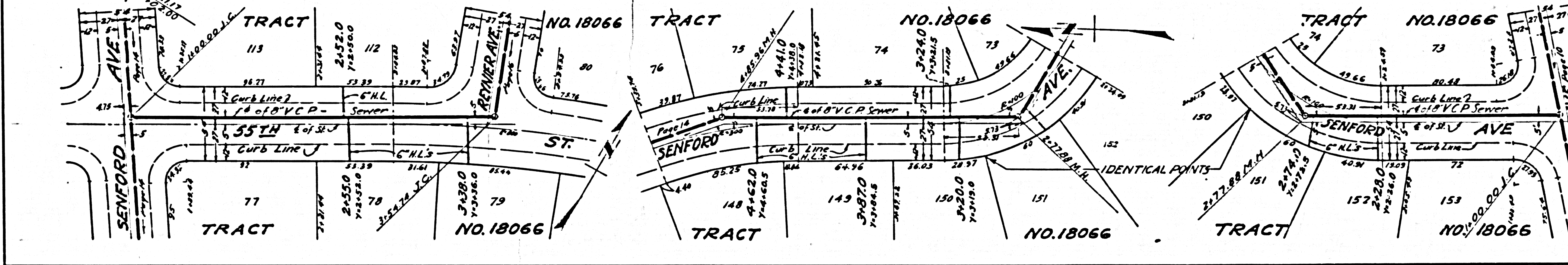
Trim Line J



NO CHARGE FOR CONNECTIONS

DOUBLE SCALE

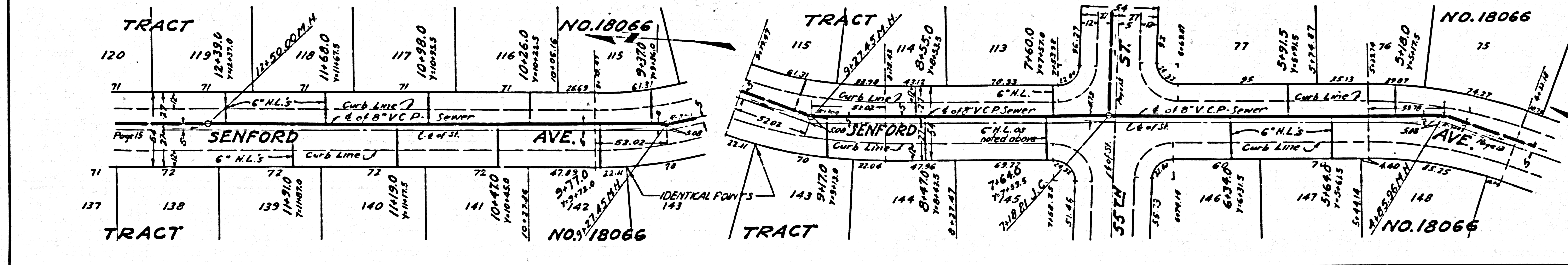
23,248



NO CHARGE FOR CONNECTIONS

DOUBLE SCALE

23,249



PC. 3923 7

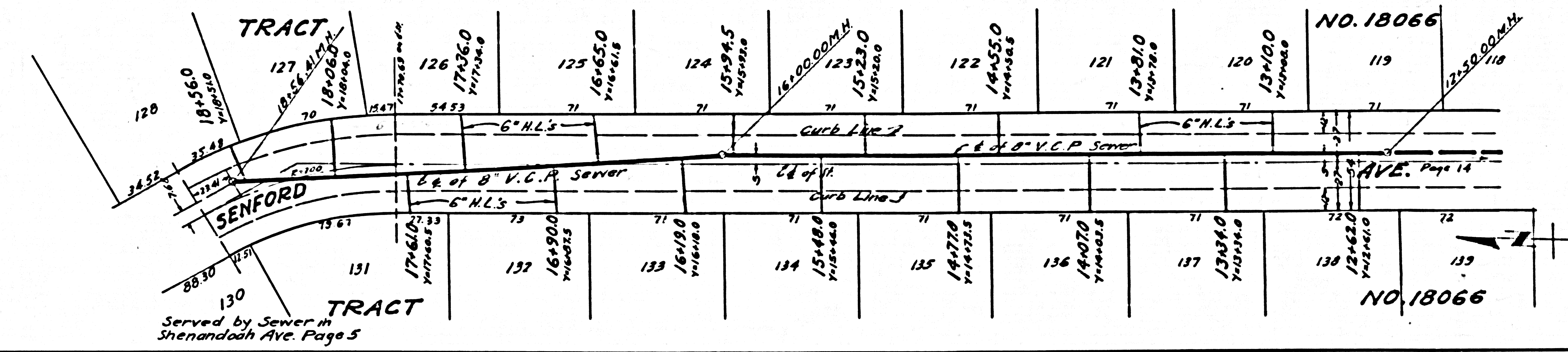
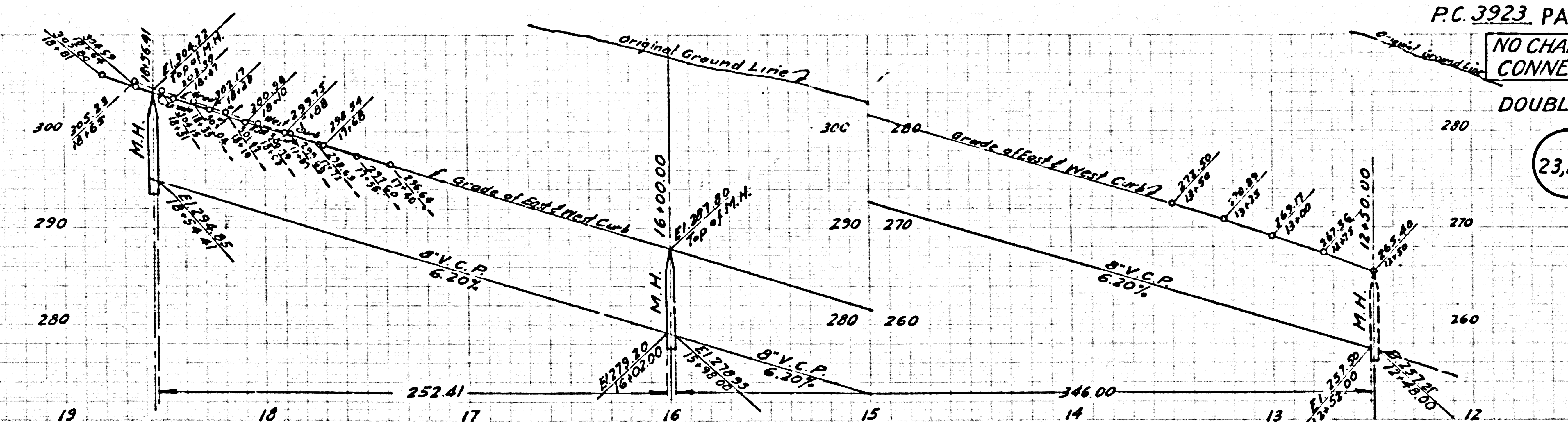
NO CHARGE FOR CONNECTIONS

DOUBLE SCALE

23,250

8

PC 3923



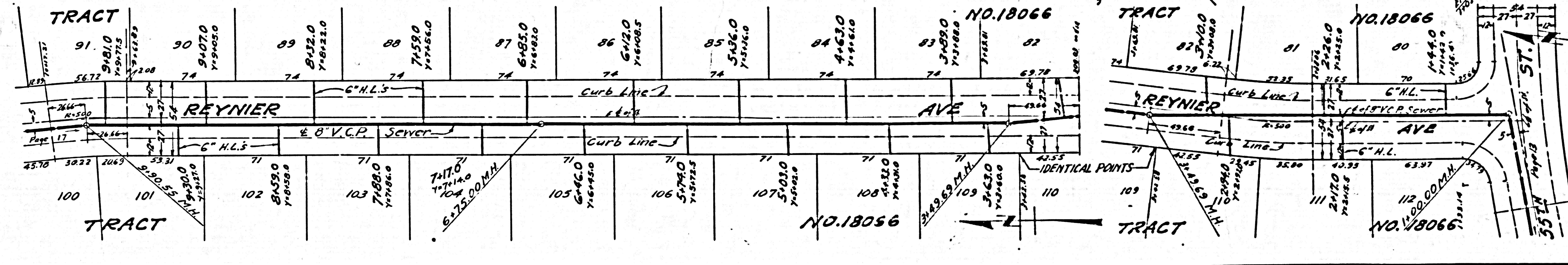
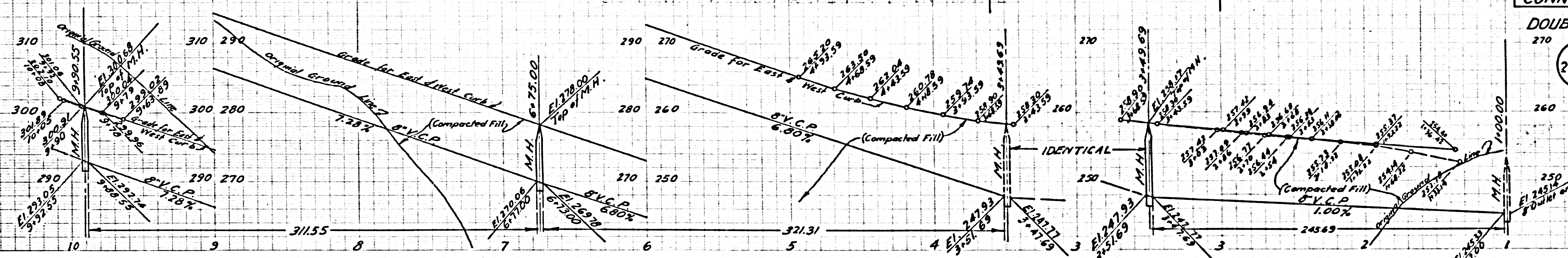
NO CHARGE FOR CONNECTIONS

DOUBLE SCALE

23,251

8

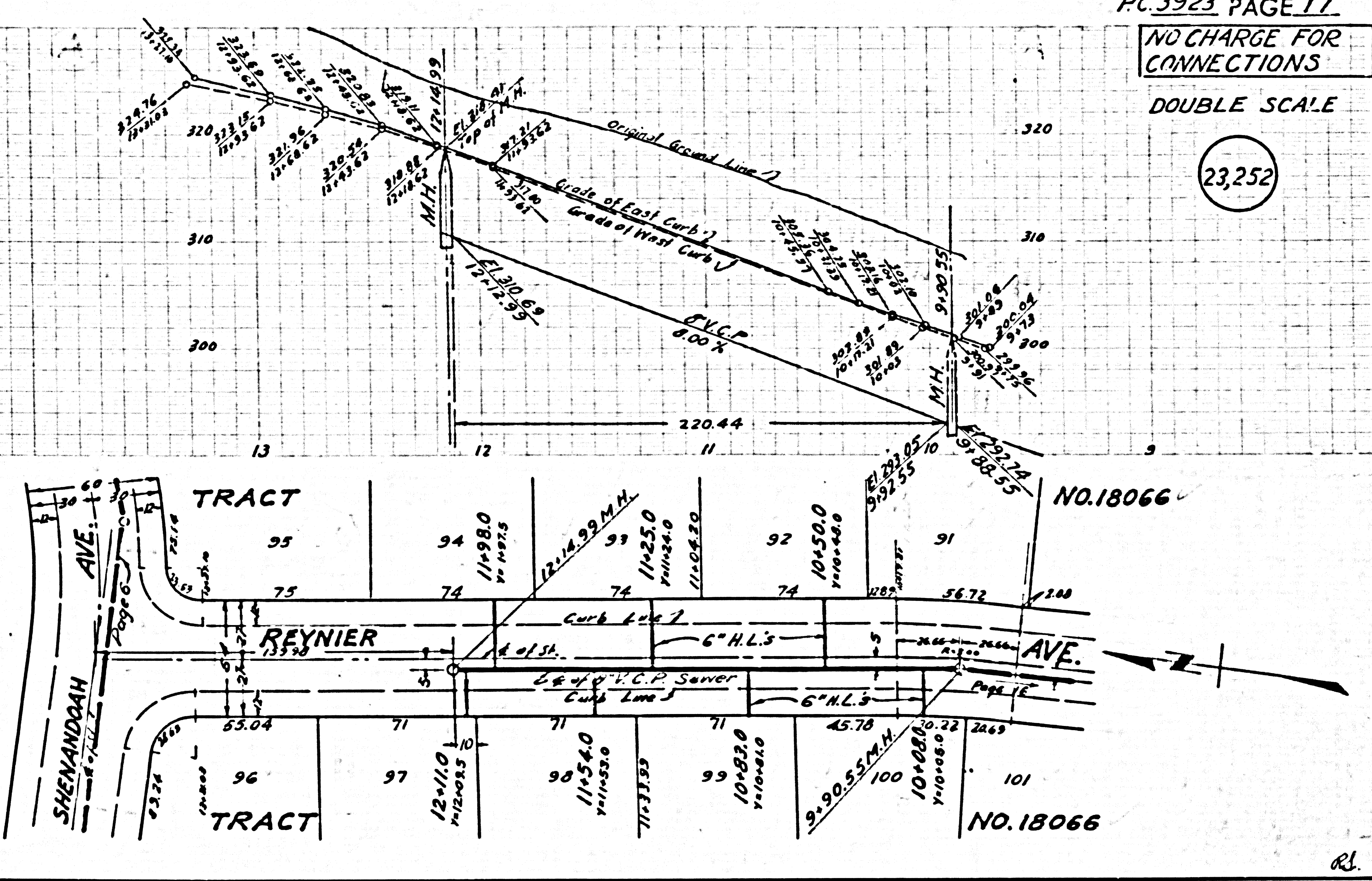
PC 3923



23,252

9)

PC. 3923



23,253

