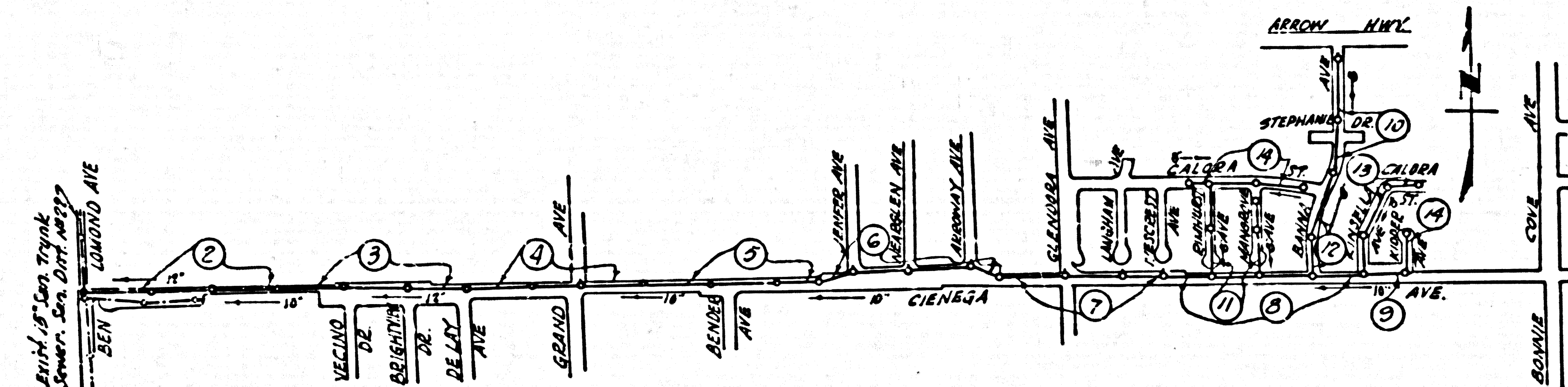


B.M. 56.53 El 646.903
 Let. N. Cr. of Cienega Ave. 1.9'E. of Cr. Rd.
 N.E. Cor. of Grand Ave.

SAN DIMAS BLDG. DIST. NO. 10

PROFILE ALIGNMENT AND GRADE OF **P.C. 3924**
SANITARY SEWERS PAGE 1
 TO BE CONSTRUCTED IN
TRACT No 21849 (23653)
 (14)

PRIVATE CONTRACT NO. 3924
 W.S. 47 & 48
 7 SHEETS, 14 PAGES
 SCALE: HORIZ. 1"=40' VERT. 1"=4'
 JUNE, 1956
 PREPARED IN THE OFFICES OF
KARL F. TUTTLE ENGINEERING CO.
 BY *John A. Tuttle* REG. C. E. NO. 6638
 FOR LEGEND SEE PLAN NO. S-A-64



INDEX MAP
TRACT 21849
P.C. 3924
 Scale: 1"=600'

COLLECT CHARGES
AS INDICATED
6-17-56

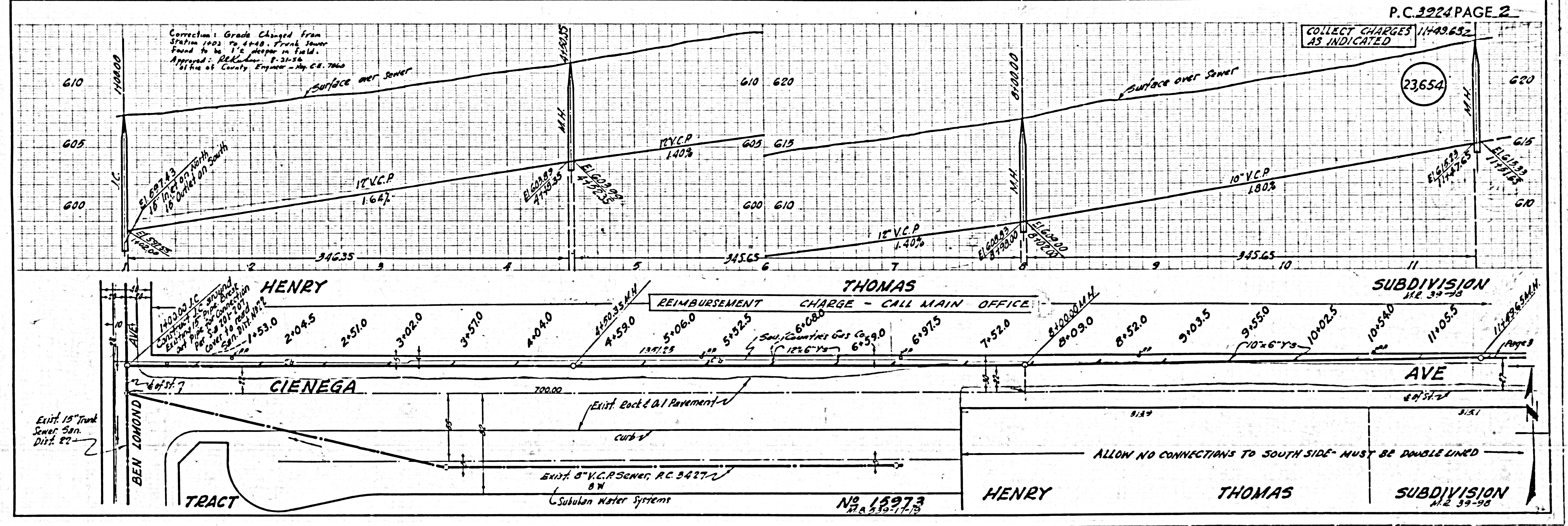
Before breaking into any existing structure
 and before final acceptance of this work,
 County Sanitation District should be notified
 in order that required inspection may be made.

NOTE:
 GRADES TO WHICH THIS IMPROVEMENT IS TO BE CONSTRUCTED ARE SHOWN ON PLANS AND PROFILES. GRADE POINTS FOR
 TOP OF CURBS, CENTER LINE OF STREETS, OR CENTER LINE OF ALLEYS ARE SHOWN BY CIRCLES ON PROFILES AT ALL POINTS BETWEEN
 DESIGNATED POINTS THE GRADE SHALL BE ESTABLISHED SO AS TO CONFORM TO A STRAIGHT LINE DRAWN BETWEEN SAID DESIGNATED
 POINTS.
 ELEVATIONS ARE IN FEET ABOVE U.S.C. & G.S. MEAN SEA LEVEL UNLESS OTHERWISE NOTED.
 THIS DRAWING AND THE DATA HEREON ARE HEREBY MADE A PART OF THE SPECIFICATIONS.
 WORK SHALL BE CONSTRUCTED ACCORDING TO SPECIFICATIONS ON FILE IN THE OFFICE OF THE COUNTY ENGINEER AND SHALL
 BE PROSECUTED ONLY IN THE PRESENCE OF THE COUNTY ENGINEER.
 BEFORE WORK CAN BE STARTED, THE CONTRACTOR MUST OBTAIN A PERMIT TO EXCAVATE IN COUNTY STREETS FROM THE
 L.A. COUNTY ROAD DEPT. USE OF THIS PERMIT AND REPORT WITH THE COUNTY ENGINEER FROM THE SANITATION DISTRICT
 NO. 10, 333 SO. BROADWAY SUFFICIENT TO COVER THE COST OF CONSTRUCTION INSPECTION AND RECORD PLANS.
 APPROVAL OF THIS PLAN BY THE COUNTY OF LOS ANGELES DOES NOT CONSTITUTE A REPRESENTATION AS TO THE ACCURACY
 OF THE LOCATION OF OR THE EXISTENCE OR NON-EXISTENCE OF ANY UNDERGROUND UTILITY PIPES, OR STRUCTURE WITHIN THE
 LIMITS OF THIS PROJECT. THE WORK APPLICABLE TO ALL PAGES.
 IF WORK IS TO BE DONE IN A STATE HIGHWAY, A PERMIT MUST BE OBTAINED FROM THE STATE OF CALIFORNIA, DIVISION OF
 HIGHWAYS, 120 SOUTH SPANISH STREET.

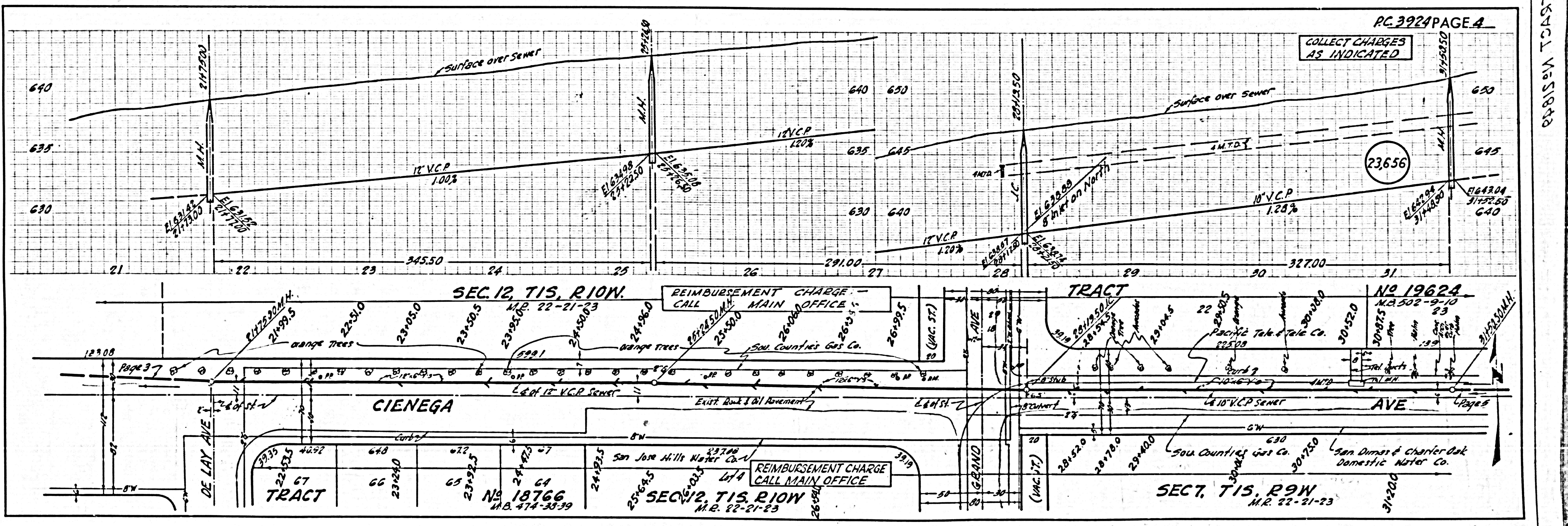
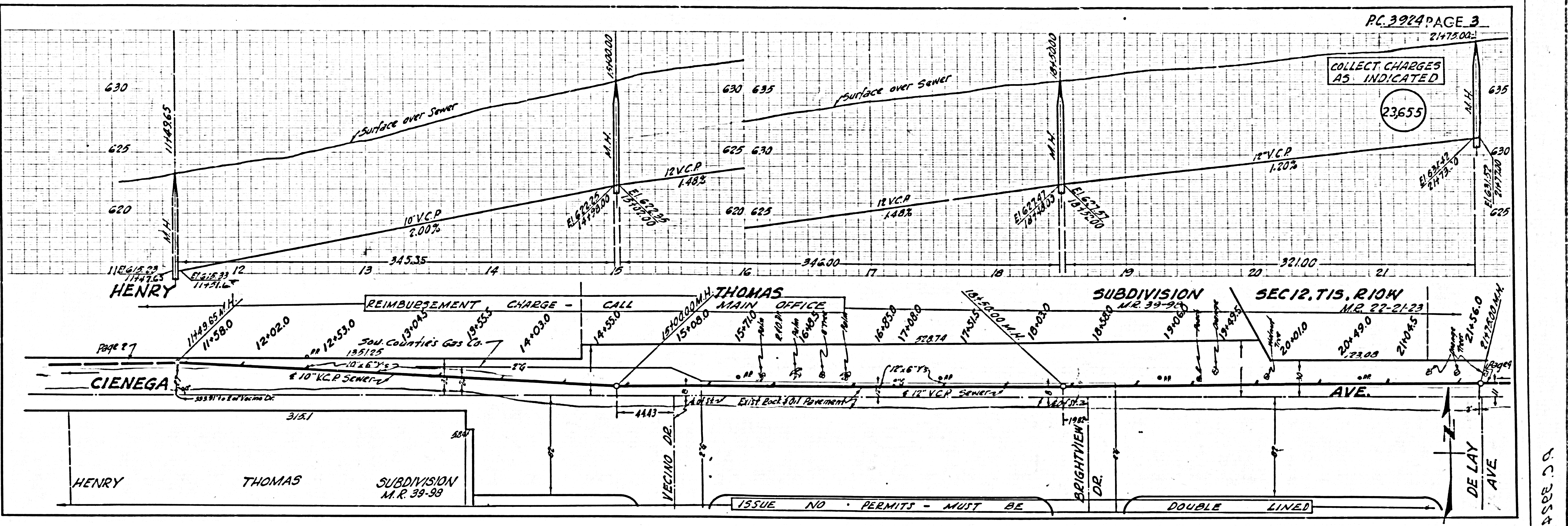
COUNTY OF LOS ANGELES, CALIFORNIA
 APPROVED, JOHN A. LAMBE, COUNTY ENGINEER
 APPROVED, A. M. BAWN, CHIEF ENGINEER
 COLLEGE REG. NO. 82
 BY *A. P. Collins* SANITATION ENGINEER BY *J. H. ...* OFFICE ENGINEER
 CHECKED BY *S. K. Wida* 6-17-56
 OFFICE OF COUNTY ENGINEER, P.C. & E. NO. 3406

TR 21849

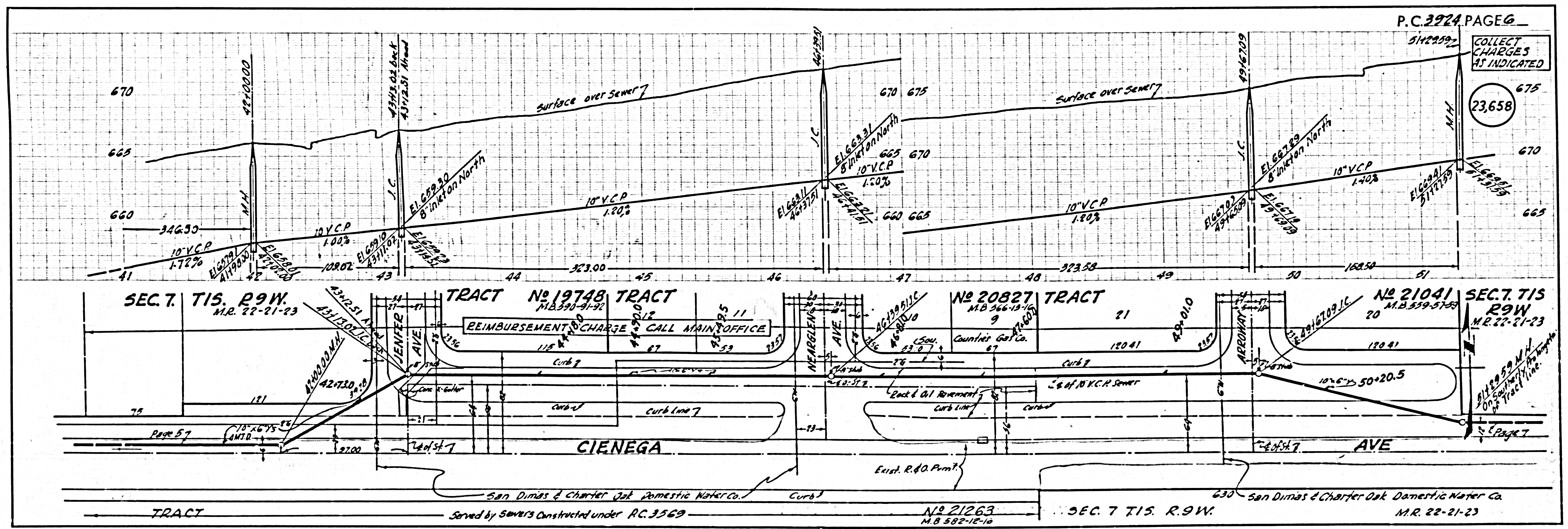
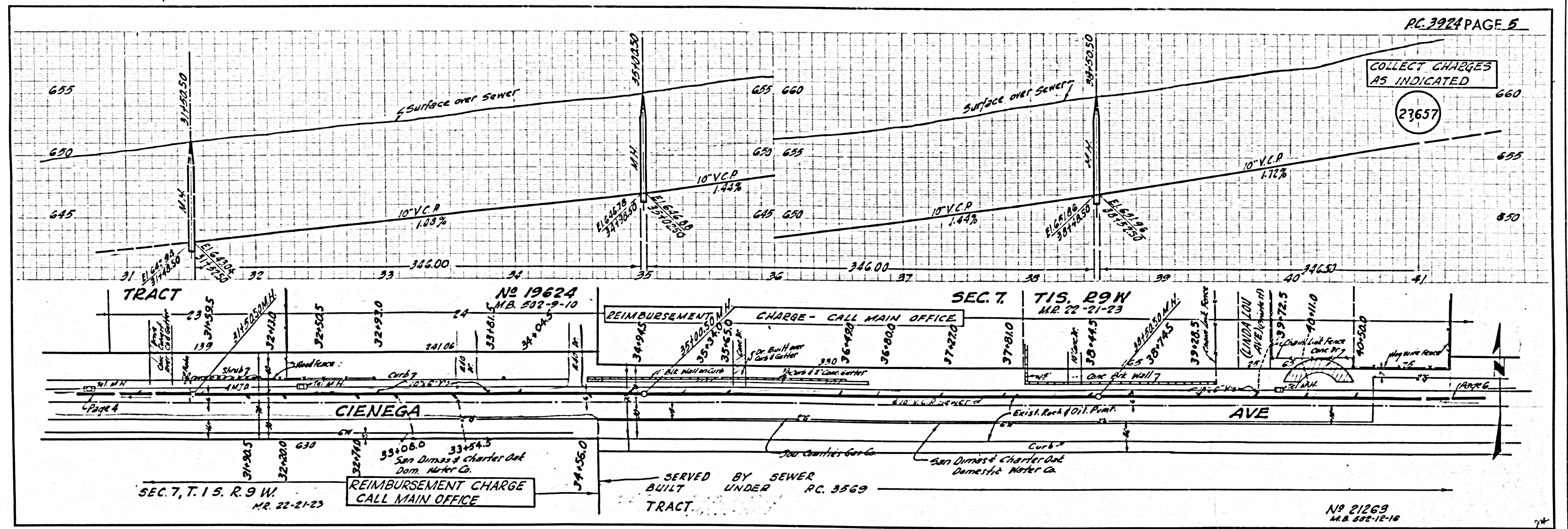
P.C. 3924



P.C. 3924 PAGE 2
COLLECT CHARGES 1149.652
AS INDICATED (23654)



P.C. 3924 TRACT NO. 18763

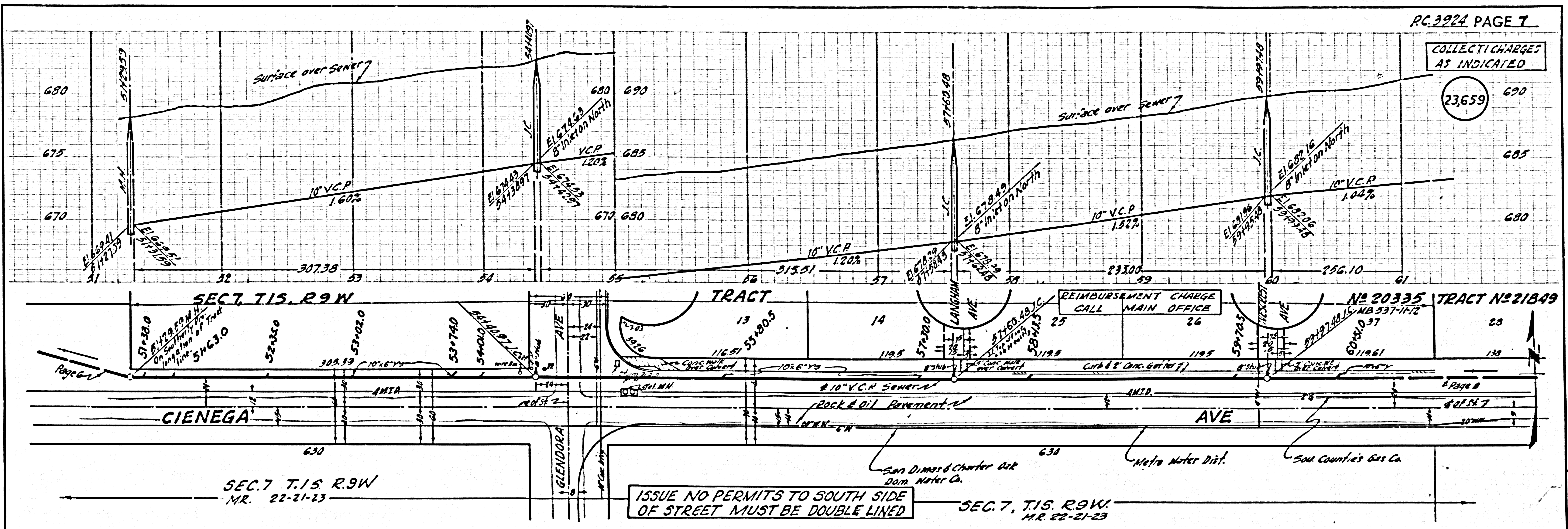


P.C. 3924

P.C. 3924 PAGE 6

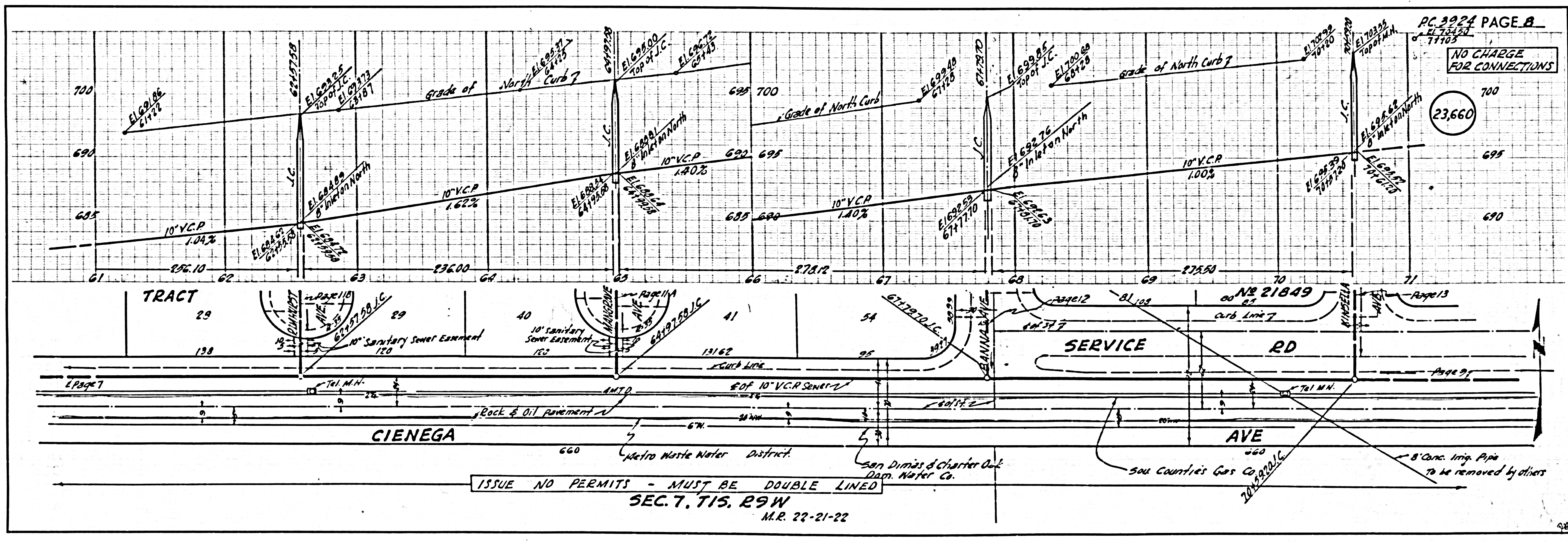
COLLECT CHARGES AS INDICATED

23,659



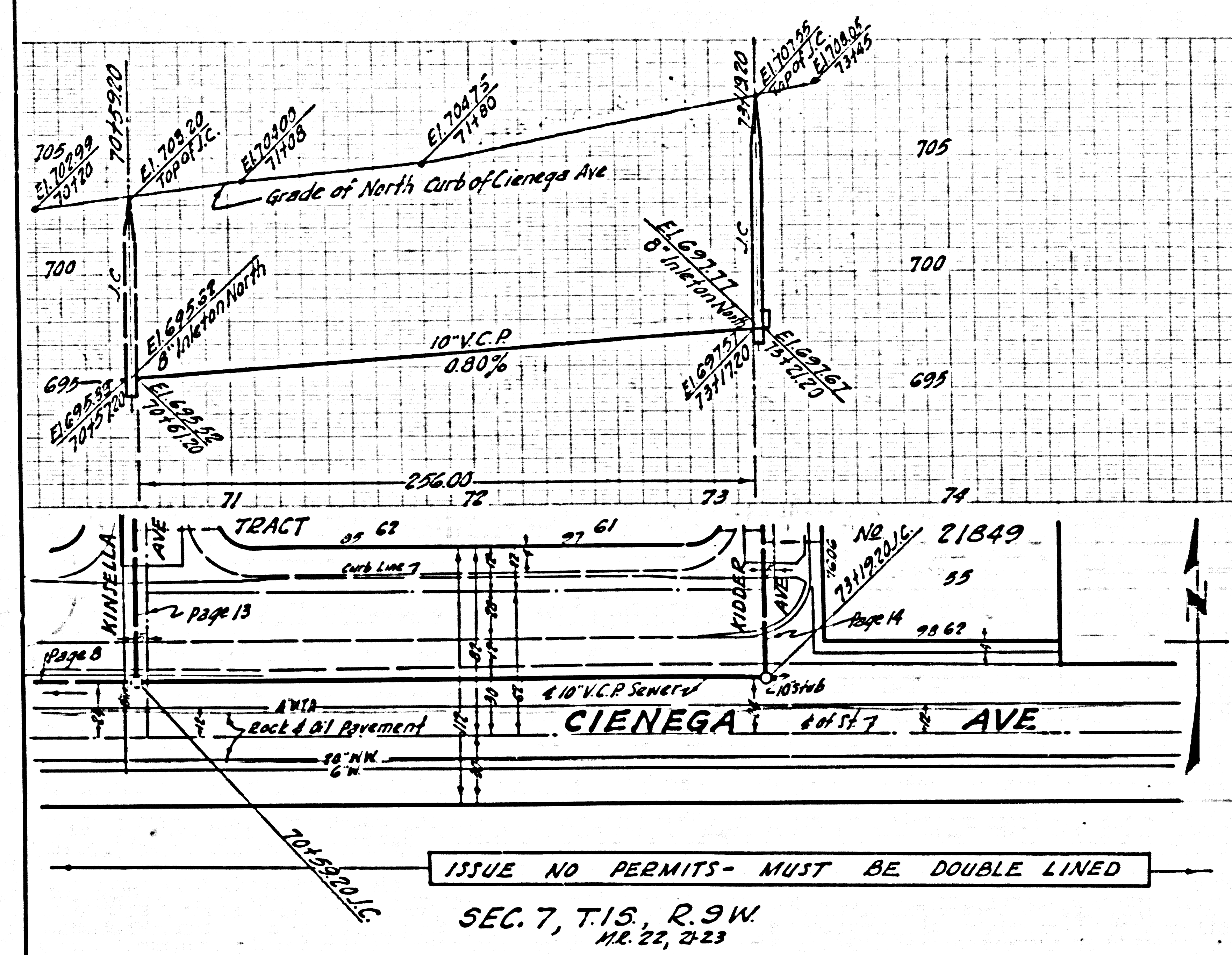
NO CHARGE FOR CONNECTIONS

23,660



NO CHARGE FOR CONNECTIONS

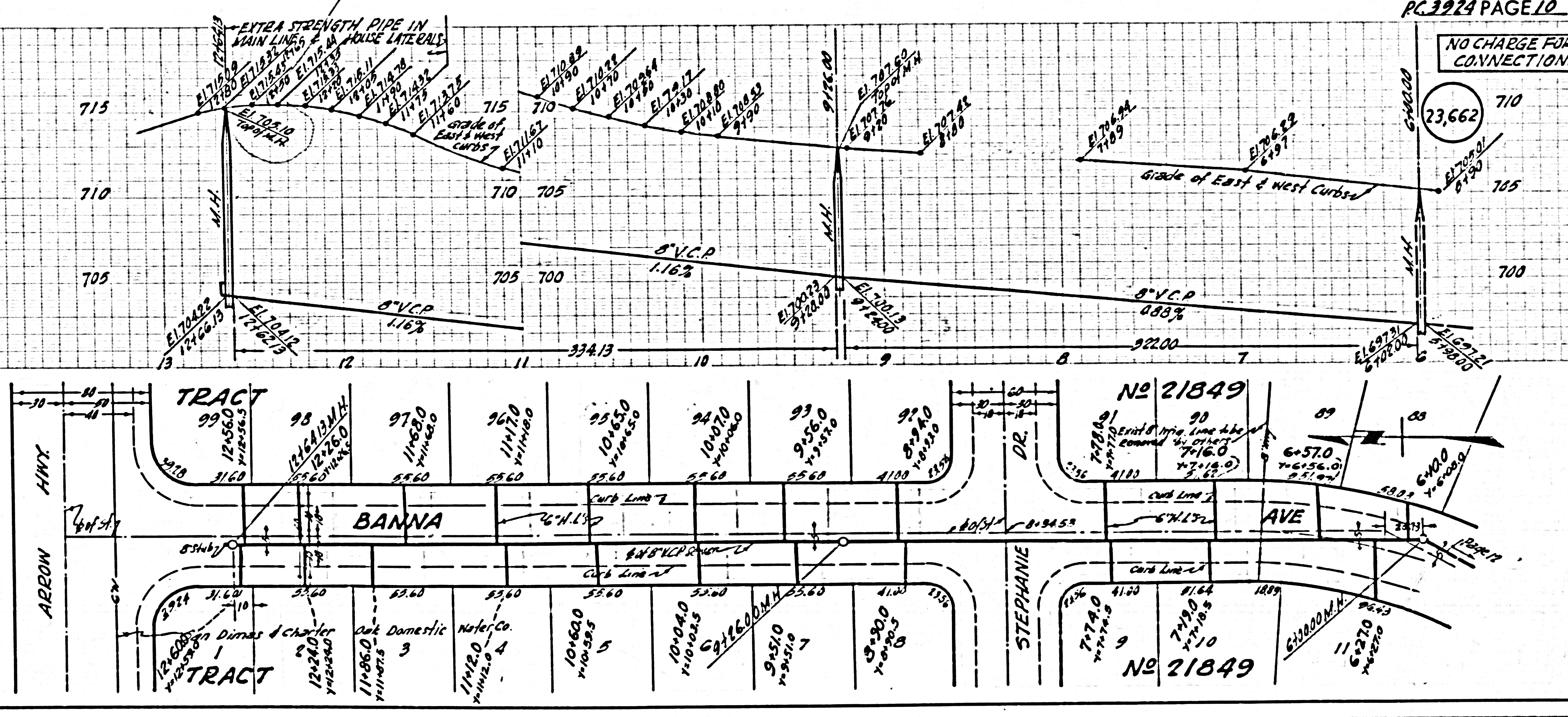
23,661



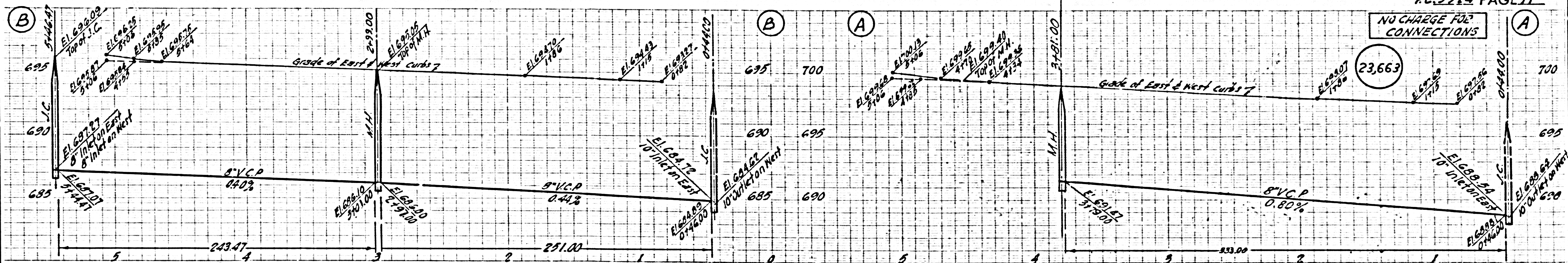
715.10

NO CHARGE FOR CONNECTIONS

23,662

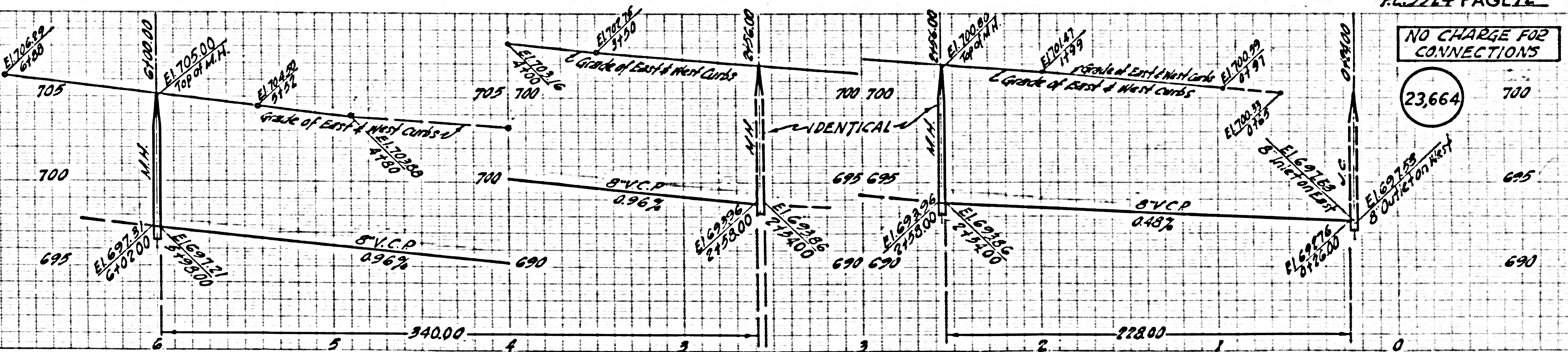
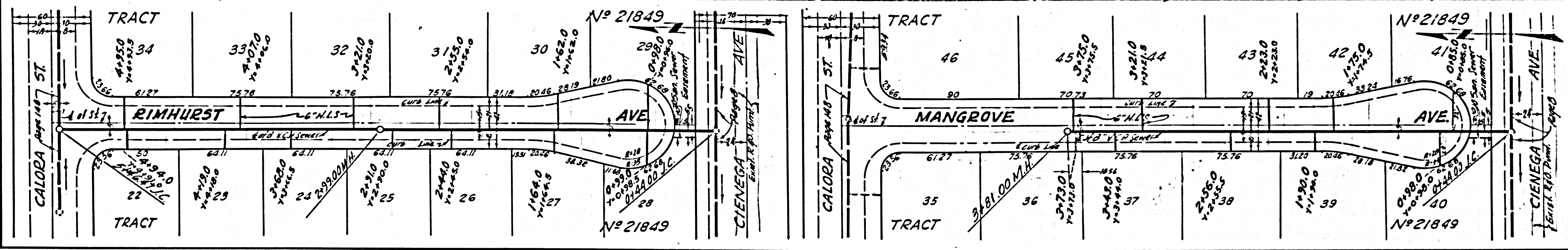


HLs



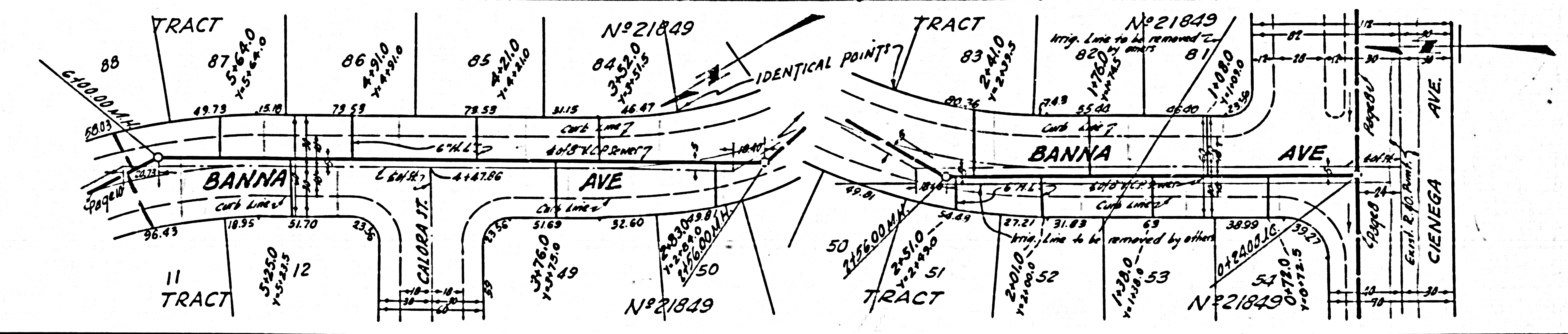
NO CHARGE FOR CONNECTIONS

23,663



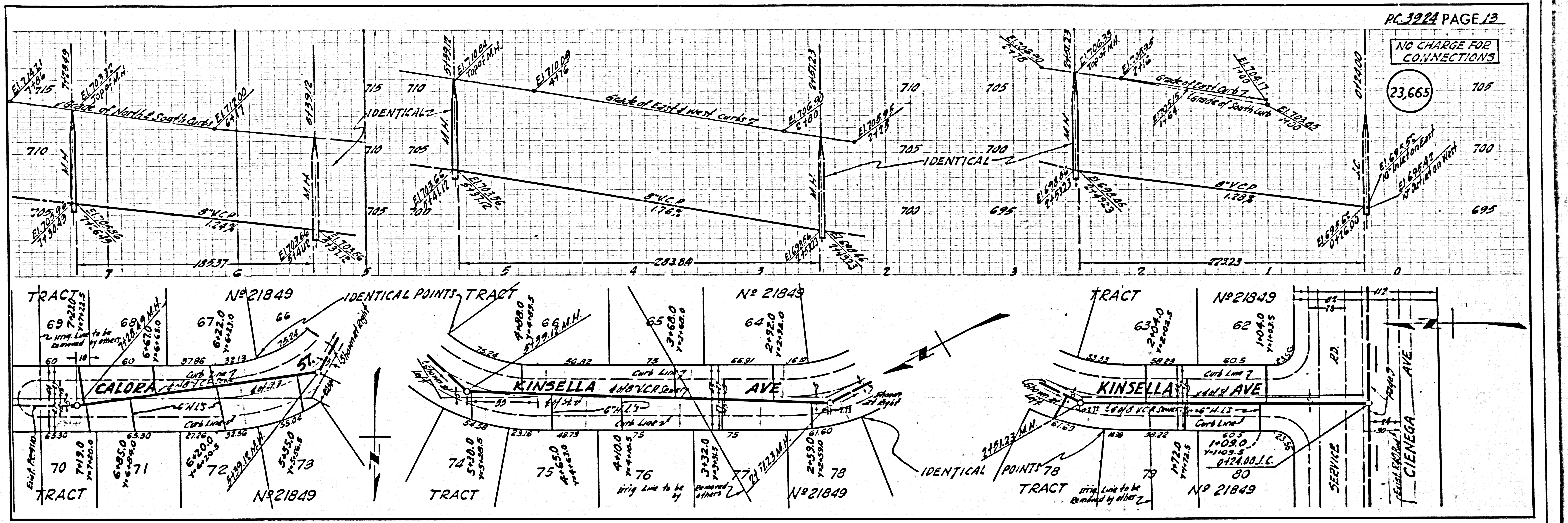
NO CHARGE FOR CONNECTIONS

23,664



NO CHARGE FOR CONNECTIONS

23,665



NO CHARGE FOR CONNECTIONS

23,666

