

LOMITA BLDG. DIST. NO. 71

PROFILE ALIGNMENT AND GRADE OF P.C. 3931
 SANITARY SEWERS PAGE 1
 TO BE CONSTRUCTED IN
 R/W NORTH OF 220TH STREET

BM No. MM-26 Elev. 53.176 L.A. Co. ENGR. F.B. 1213 1/107
 220th St & Dolores St NE. Cor
 L&N in RE. Tog (RE 5326) in S.W. cor drive to No # 309

Note: Locations of Underground Utilities are taken from records, and their correctness or completeness is in no way guaranteed. It shall be the contractor's responsibility alone to determine locate all underground lines of every nature, whether shown hereon or not and protect them from damage. The contractor shall bear the total expense of repairing pipes damaged by any operation in connection with the prosecution of the work.

- NOTES
- PROVIDE STAKES ON THE PROPERTY LINE OR PROPERTY LINES PRODUCED AT RIGHT ANGLES TO THE SEWER LINE AT THE CENTER LINE OF EACH MANHOLE.
 - NO REPRESENTATIVE OF THE COUNTY ENGINEER WILL SURVEY OR LAYOUT ANY PORTION OF THE WORK.
 - THE OWNER OR HIS AUTHORIZED REPRESENTATIVE SHALL FURNISH THE COUNTY ENGINEER WITH GRADE SHEETS AND STATION FOR ALL HOUSE LATERALS AND BRANCHES AND SHALL PROVIDE STAKES FOR THEM AT THEIR PROPER LOCATIONS WITH STATIONING PLAINLY MARKED. ANY CHANGE IN LOCATION SHALL BE REQUESTED IN WRITING BY THE OWNER OR HIS REPRESENTATIVE.
 - NO REVISIONS SHALL BE MADE IN THESE PLANS WITHOUT THE APPROVAL OF THE COUNTY ENGINEER.
 - USE STANDARD MANHOLE FRAMES AND COVERS, S.A. 117.
 - USE STANDARD STRENGTH PIPE.
 - USE CEMENT MORTAR FOR ALL VITRIFIED CLAY PIPE JOINTS.
 - RESURFACE ALL TRENCH WITHIN PAVED AREA TO MEET L.A. COUNTY ROAD DEPT. OR CALIF. STATE HIGHWAY DEPT. REQUIREMENTS IN ACCORDANCE WITH PERMITS.
 - INCASE POLY PIPE OF SEWER AT POINTS OF INTERFERENCE WITH POLES, S.A. 119.
 - HOUSE LATERALS TO BE CONSTRUCTED WITH JOISTS AT PROPERTY LINE FEET BELOW CURB GRADE EXCEPT AS NOTED.
 - ALL STRUCTURES SHALL BE BRICK SEWER STRUCTURES, S.A. 104.
 - FOR ALLOWABLE LEAKAGE TEST USE FORMULA NO. 1, SPEC. SEC. 11.
 - MANHOLE JOBS IN UNIMPROVED RIGHTS-OF-WAY TO BE LEVEL WITH FINISHED GRADE.

PRIVATE CONTRACT NO. 3931
 W.S. 28
 1 SHEET, 2 PAGES
 SCALE: VERT. 1" = 4'
 HORIZ. 1" = 20'
 MARCH, 1956
 PREPARED IN THE OFFICES OF
 WALTER L. KUBASEK - CIVIL ENGINEER
 BY: Walter L. Kubasek
 REG. C. E. NO. 8944
 FOR LEGEND SEE PLAN NO. S-A-64

23,084

NOTE: GRADES TO WHICH THIS IMPROVEMENT IS TO BE CONSTRUCTED ARE SHOWN ON PLANS AND PROFILE GRADE POINTS FOR TOP OF CURB, CENTER LINE OF STREET, OR CENTER LINE OF ALLEY ARE SHOWN BY CIRCLES ON PROFILE AT ALL POINTS BETWEEN DESIGNATED POINTS THE GRADE SHALL BE ESTABLISHED SO AS TO CONFORM TO A STRAIGHT LINE DRAWN BETWEEN SAID DESIGNATED POINTS.

EXPLANATIONS ARE IN PART ABOVE U.S.C. & G.S. MEAN SEA LEVEL DATUM OF 1929.

THE DRAWING AND THE DATA HEREON ARE HEREBY MADE A PART OF THE SPECIFICATIONS.

WORK SHALL BE CONSTRUCTED ACCORDING TO SPECIFICATIONS ON FILE IN THE OFFICE OF THE COUNTY ENGINEER AND SHALL BE PROSECUTED ONLY IN THE PRESENCE OF THE COUNTY ENGINEER.

BEFORE WORK CAN BE STARTED, THE CONTRACTOR MUST OBTAIN A PERMIT TO EXCAVATE IN COUNTY STREETS FROM THE L.A. COUNTY ROAD DEPT., 126 W. 2ND ST. AND MAKE A DEPOSIT WITH THE COUNTY ENGINEER, ROOM 324 PAN AMERICAN BUILDING, 225 SO. BROADWAY SUFFICIENT TO COVER THE COST OF CONSTRUCTION INSPECTION AND RECORD PLANS.

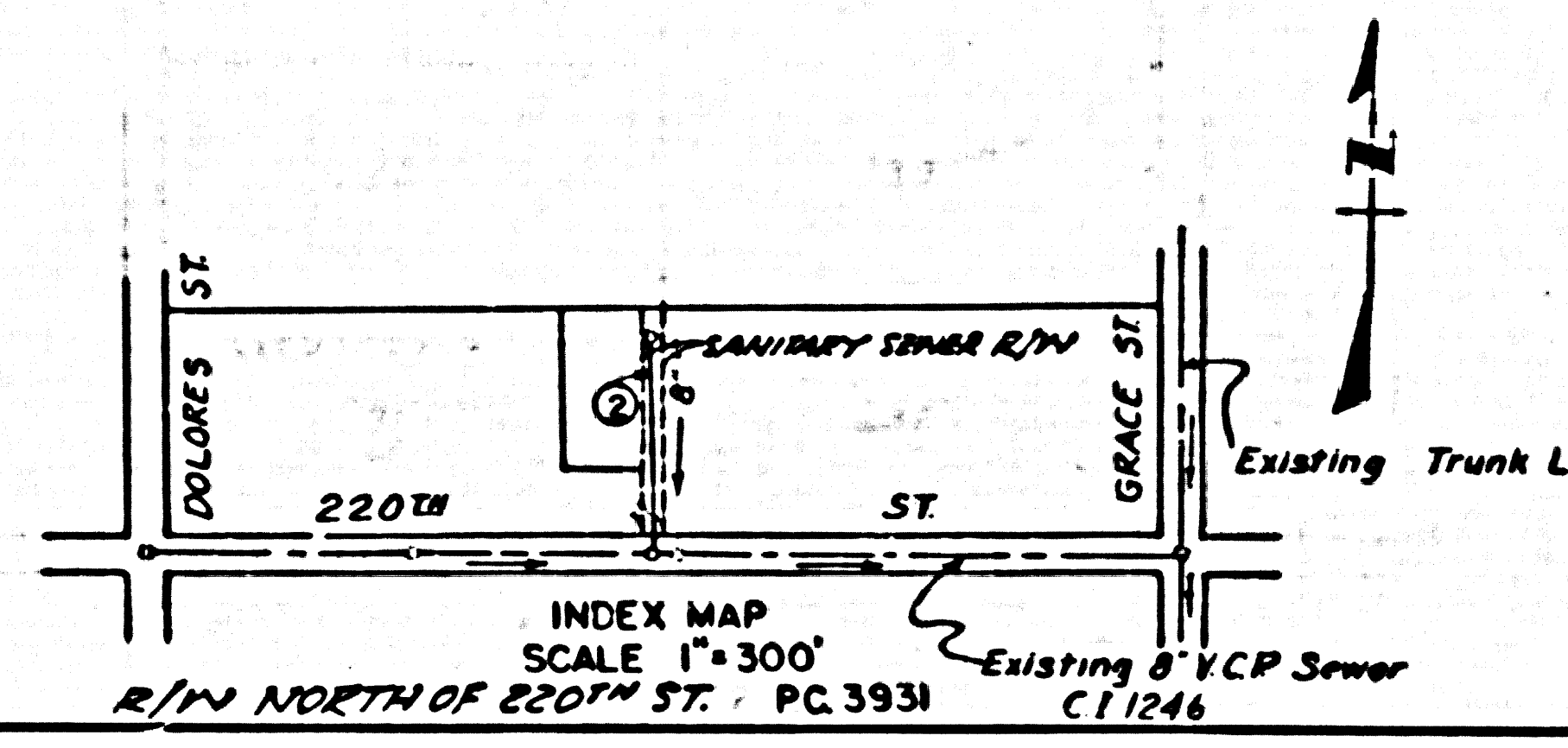
APPROVAL OF THIS PLAN BY THE COUNTY OF LOS ANGELES DOES NOT CONSTITUTE A REPRESENTATION AS TO THE ACCURACY OF THE LOCATION OF OR THE EXISTENCE OR NON-EXISTENCE OF ANY UNDERGROUND UTILITY PIPE OR STRUCTURE WITHIN THE LIMITS OF THIS PROJECT. THIS NOTE APPLIES TO ALL PAGES.

IF WORK IS TO BE DONE IN A STATE HIGHWAY, A PERMIT MUST BE OBTAINED FROM THE STATE OF CALIFORNIA, DIVISION OF HIGHWAYS, 120 SOUTH SPRING STREET.

COUNTY OF LOS ANGELES, CALIFORNIA

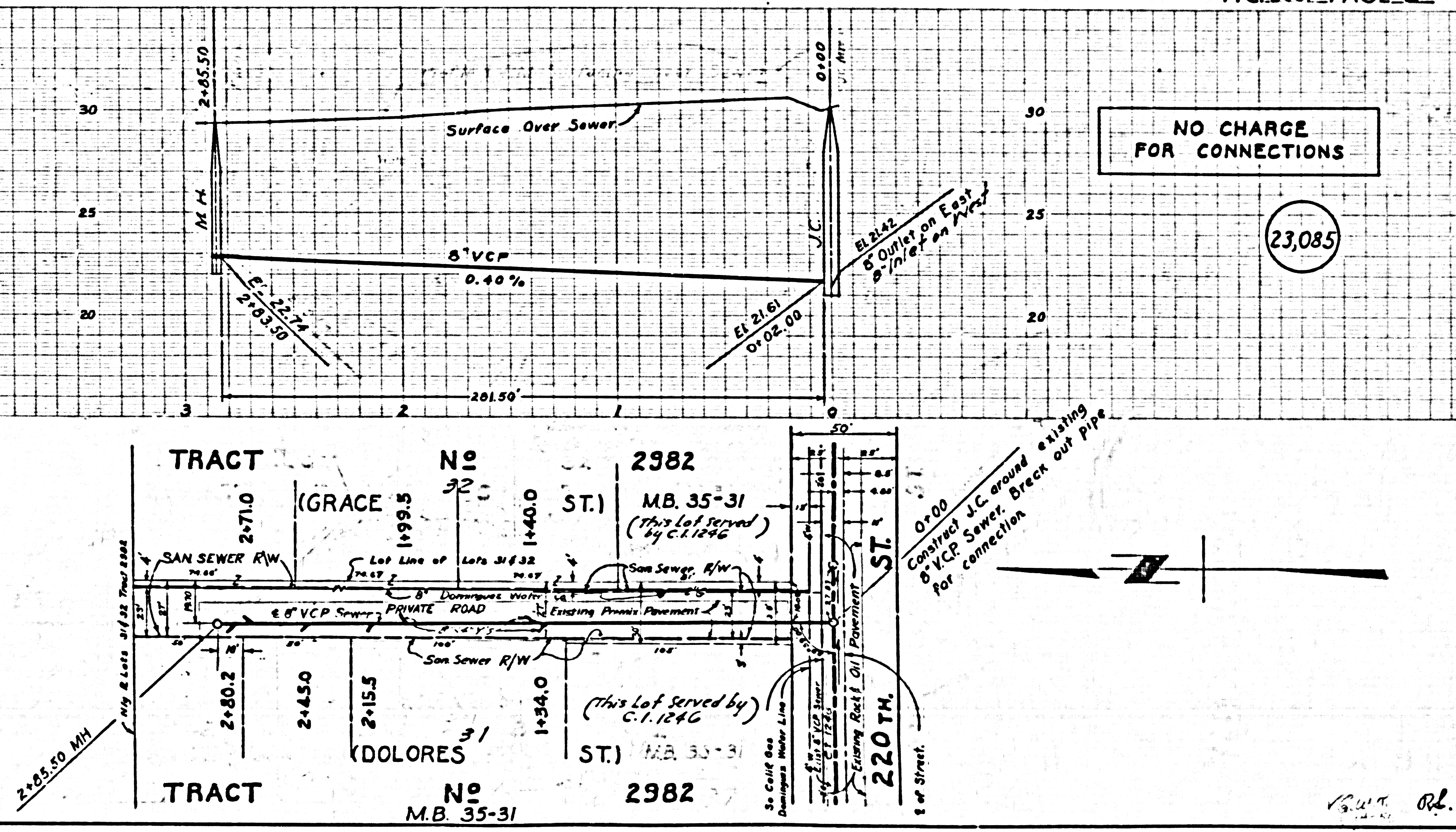
APPROVED, JOHN A. LAMME, COUNTY ENGINEER
 APPROVED, A. M. RAWN, CHIEF ENGINEER
 CO. SAN. DIST. NO. 8
 BY: J. P. Collins
 SANITATION ENGINEER
 BY: A. Postman
 OFFICE ENGINEER
 CHECKED BY: R. K. Onda 6-21-56
 OFFICE OF COUNTY ENGINEER, REG. C. E. NO. 3406

NO CHARGE FOR CONNECTIONS
 R. K. Onda 6-21-56



Checked 7-19-56 W. L. Rawen

P.C. 3931 PAGE 2



NO CHARGE FOR CONNECTIONS

23,085