

INDEX MAP  
SCALE 1/4" = 100'  
TRACT No. 22049  
P.C. 3933

GENERAL NOTES:  
S. 6 384' 1. 17' IN HEIGHTS IN CENTER OF FRANCISCO ST.  
AND WILLOW AVENUE. ELEV. 337.29'

**PUEENTE BLDG. DIST. NO. 2**

- NOTE:  
PROVIDE STAKES ON THE PROPERTY LINE OR PROPERTY LINES PRODUCED AT RIGHT ANGLES TO THE SEWER LINE AT THE CENTER LINE OF EACH MANHOLE.
- NO REPRESENTATIVE OF THE COUNTY ENGINEER WILL SURVEY OR LAY OUT ANY PORTION OF THE WORK.
- THE OWNER OR HIS AUTHORIZED REPRESENTATIVE SHALL FURNISH THE COUNTY ENGINEER WITH GRADE SHEETS AND STATION FOR ALL HOUSE LATERALS AND "Y" BRANCHES AND SHALL PROVIDE STAKES FOR THEM AT THEIR PROPER LOCATIONS WITH STATIONING PLAINLY MARKED. ANY CHANGE IN LOCATION SHALL BE REQUESTED BY WRITING BY THE OWNER OR HIS REPRESENTATIVE.
- NO REVISIONS SHALL BE MADE IN THIS PLAN WITHOUT THE APPROVAL OF THE COUNTY ENGINEER.
1. USE STANDARD MANHOLE HEADS AND COVERS, S.A. 119, EXCEPT AS NOTED.
  2. USE STANDARD STRENGTH PIPE EXCEPT AS NOTED.
  3. USE CEMENT MORTAR FOR ALL WITHED CLAY PIPE JOINTS.
  4. RESURFACE ALL TRENCH WITHIN PAVED AREA TO MEET L. A. COUNTY ROAD DEPT. OR CALIF. STATE HIGHWAY DEPT. REQUIREMENTS IN ACCORDANCE WITH PERMITS.
  5. ENCASE FOUR FEET OF SEWER AT POINTS OF INTERFERENCE WITH POLES, S.A. 119.
  6. HOUSE LATERALS TO BE CONSTRUCTED WITH INVERTS AT PROPERTY LINE 6 FEET BELOW CURB GRADE EXCEPT AS NOTED.
  7. ALL STRUCTURES SHALL BE BRICK OR CONCRETE STRUCTURES, S.A. 104, EXCEPT AS NOTED.
  8. FOR ALLOWABLE MARSH TEST USE FORMULA NO. 1, SPEC. SEC. II.

PROFILE ALIGNMENT AND GRADE OF **P.C. 3933**  
**SANITARY SEWERS** PAGE 1  
TO BE CONSTRUCTED IN

TRACT No. 22049 (23,381)  
(10)

PRIVATE CONTRACT NO. 3933  
W.S. 46

5 SHEETS, 4 PAGES  
SCALE: VERT. 1" = 4' HORIZ. 1" = 40' WILLOW, 1956

PREPARED IN THE OFFICE OF  
JOHN S. GREGORY, C.E.

By *John S. Gregory* REG. C. E. NO. 153

FOR LEGEND SEE PLAN NO. S-A-64

NOTE:  
GRADES TO WHICH THIS IMPROVEMENT IS TO BE CONSTRUCTED ARE SHOWN ON PLANS AND PROFILE GRADE POINTS FOR TOP OF CURB, CENTER LINE OF STREETS, OR CENTER LINE OF ALLEYS ARE SHOWN BY CIRCLES ON PROFILES AT ALL POINTS BETWEEN DESIGNATED POINTS THE GRADE SHALL BE ESTABLISHED SO AS TO CONFORM TO A STRAIGHT LINE DRAWN BETWEEN SAID DESIGNATED POINTS.

ELEVATIONS ARE IN FEET ABOVE M.S.L. (M. S. L. LEVEL SURFACE OF 1929).

THIS DRAWING AND THE DATA HEREON ARE HEREBY MADE A PART OF THE SPECIFICATIONS.

WORK SHALL BE CONSTRUCTED ACCORDING TO SPECIFICATIONS ON FILE IN THE OFFICE OF THE COUNTY ENGINEER AND SHALL BE INSPECTED ONLY IN THE PRESENCE OF THE COUNTY ENGINEER.

BEFORE WORK CAN BE STARTED, THE CONTRACTOR MUST OBTAIN A PERMIT TO EXCAVATE IN COUNTY STREETS FROM THE L. A. COUNTY ROAD DEPT. FOR THE USE OF THE COUNTY ENGINEER'S ROOM 324 SAN ANTONIO BLDG. 343 SO BROADWAY SUFFICIENT TO COVER THE COST OF CONSTRUCTION INSPECTION AND RECORD PLANS.

APPROVAL OF THIS PLAN BY THE COUNTY OF LOS ANGELES DOES NOT CONSTITUTE A REPRESENTATION AS TO THE ACCURACY OF THE LOCATION OF OR THE EXISTENCE OR NON-EXISTENCE OF ANY UNDERGROUND UTILITY PIPE, OR STRUCTURE WITHIN THE LIMITS OF THIS PROJECT THIS NOTE APPLIES TO ALL PAGES.

IF WORK IS TO BE DONE IN A STATE HIGHWAY, A PERMIT MUST BE OBTAINED FROM THE STATE OF CALIFORNIA, DIVISION OF HIGHWAYS, 128 SOUTH SPRING STREET.

COUNTY OF LOS ANGELES, CALIFORNIA

APPROVED, JOHN A. LAMBE, COUNTY ENGINEER APPROVED, A. M. RAWN, CHIEF ENGINEER

By *J. P. Collins* SANITATION ENGINEER By *A. M. Rawn* OFFICE ENGINEER

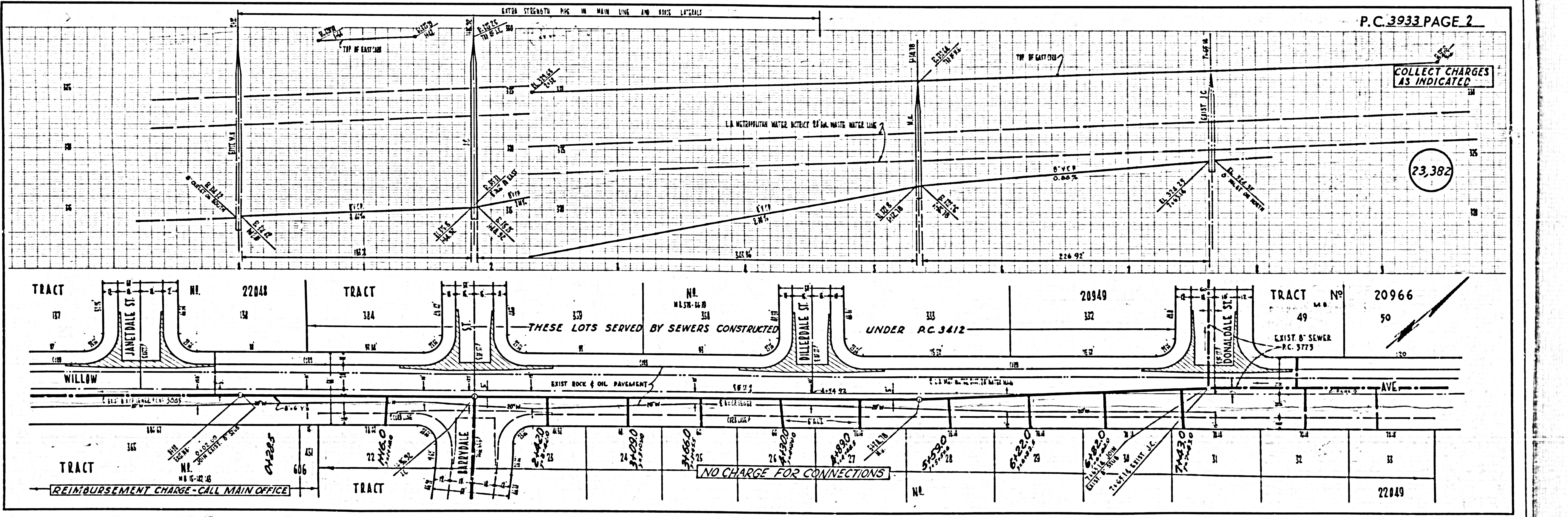
CHECKED BY *J. K. Oide* 4-7-56 OFFICE OF COUNTY ENGINEER, REG. C. E. NO. 3406

COLLECT CHARGES AS INDICATED  
*R. Curtis 4-3-56*

Curb Grades Revised & Relocation of Sewers in Willow Ave.  
Checked By *J. K. Oide 4-7-56*  
Office of the County Engineer, Reg. C. E. No. 3406

*Checked 5-31-56 W. L. Lamm*

*at us ok 5/3/56*



P.C. 3933 PAGE 2

COLLECT CHARGES AS INDICATED

(23,382)

THESE LOTS SERVED BY SEWERS CONSTRUCTED UNDER RC 3412

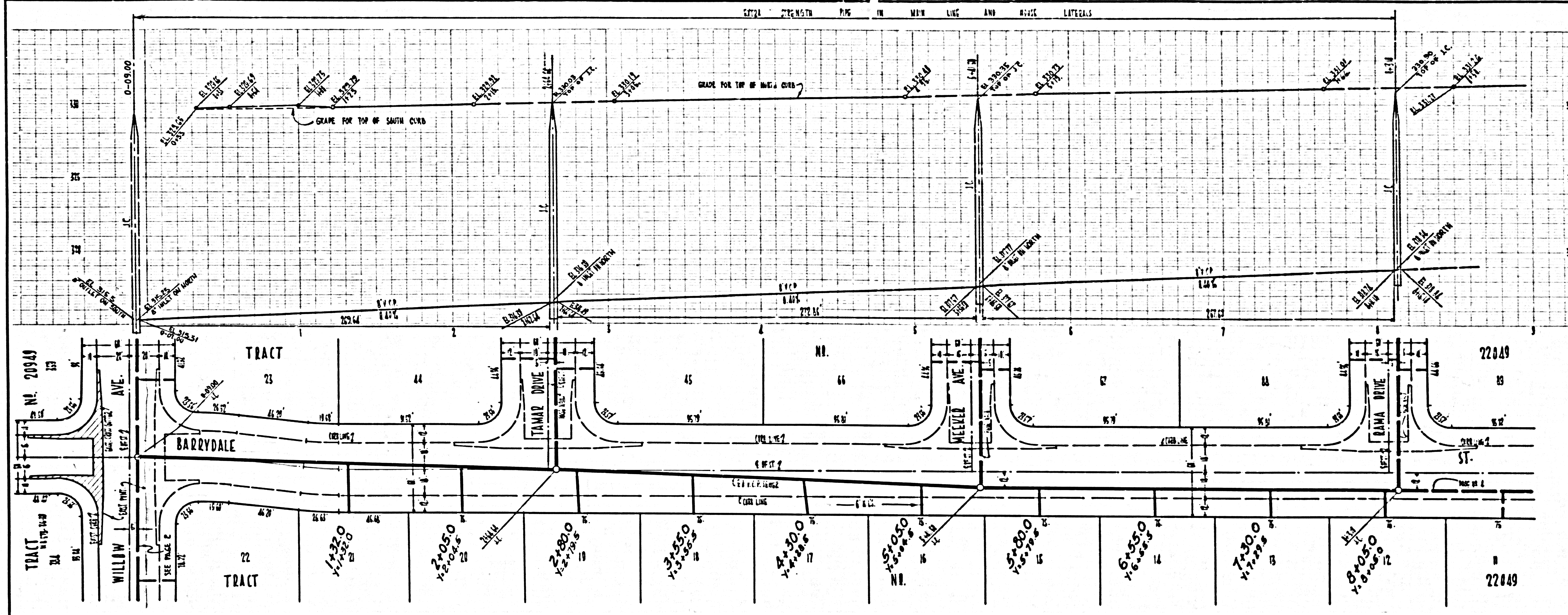
NO CHARGE FOR CONNECTIONS

REIMBURSEMENT CHARGE - CALL MAIN OFFICE



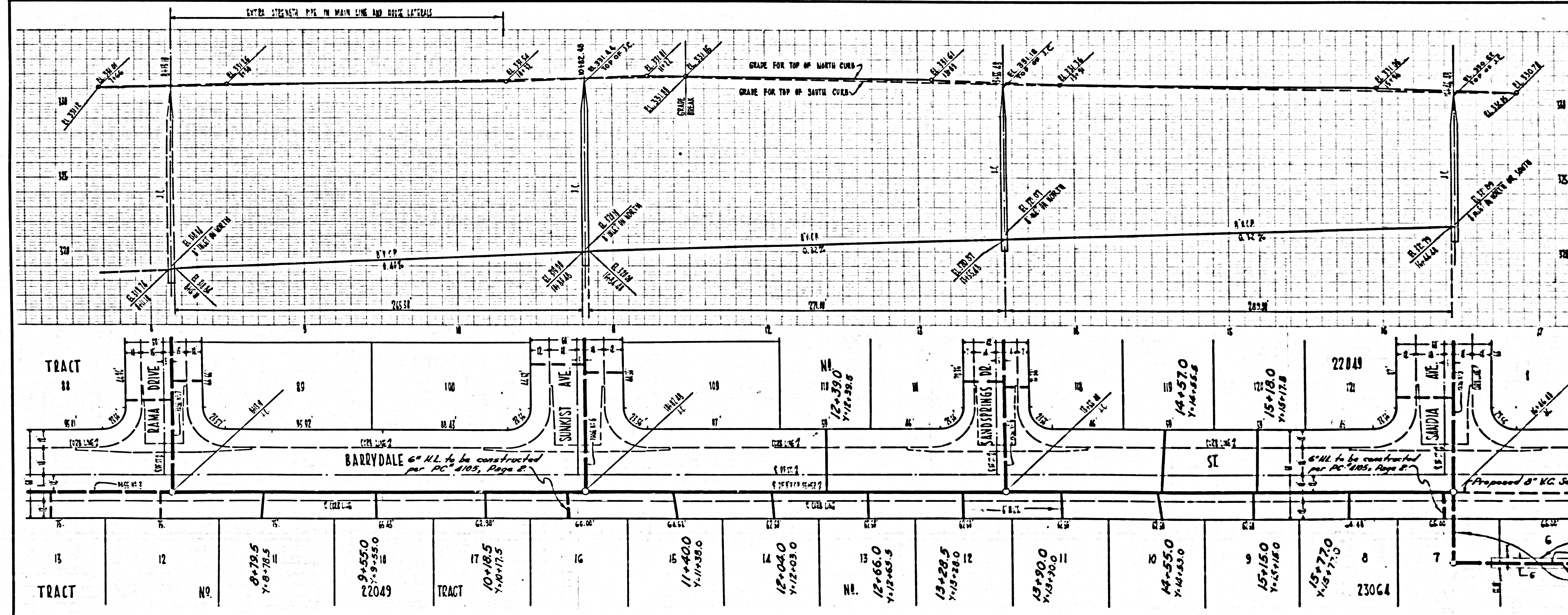
NO CHARGE FOR CONNECTIONS

23,383



NO CHARGE FOR CONNECTIONS

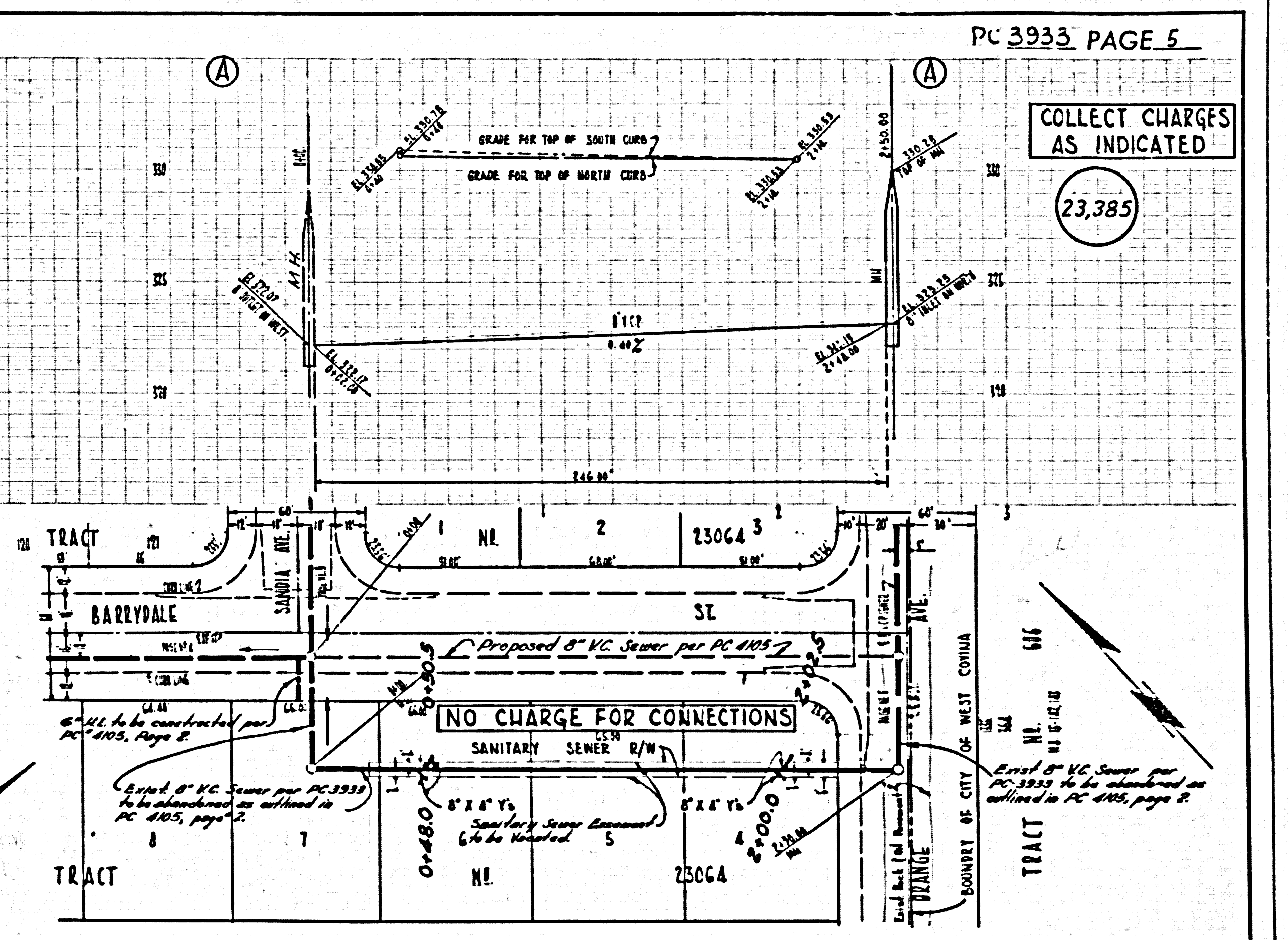
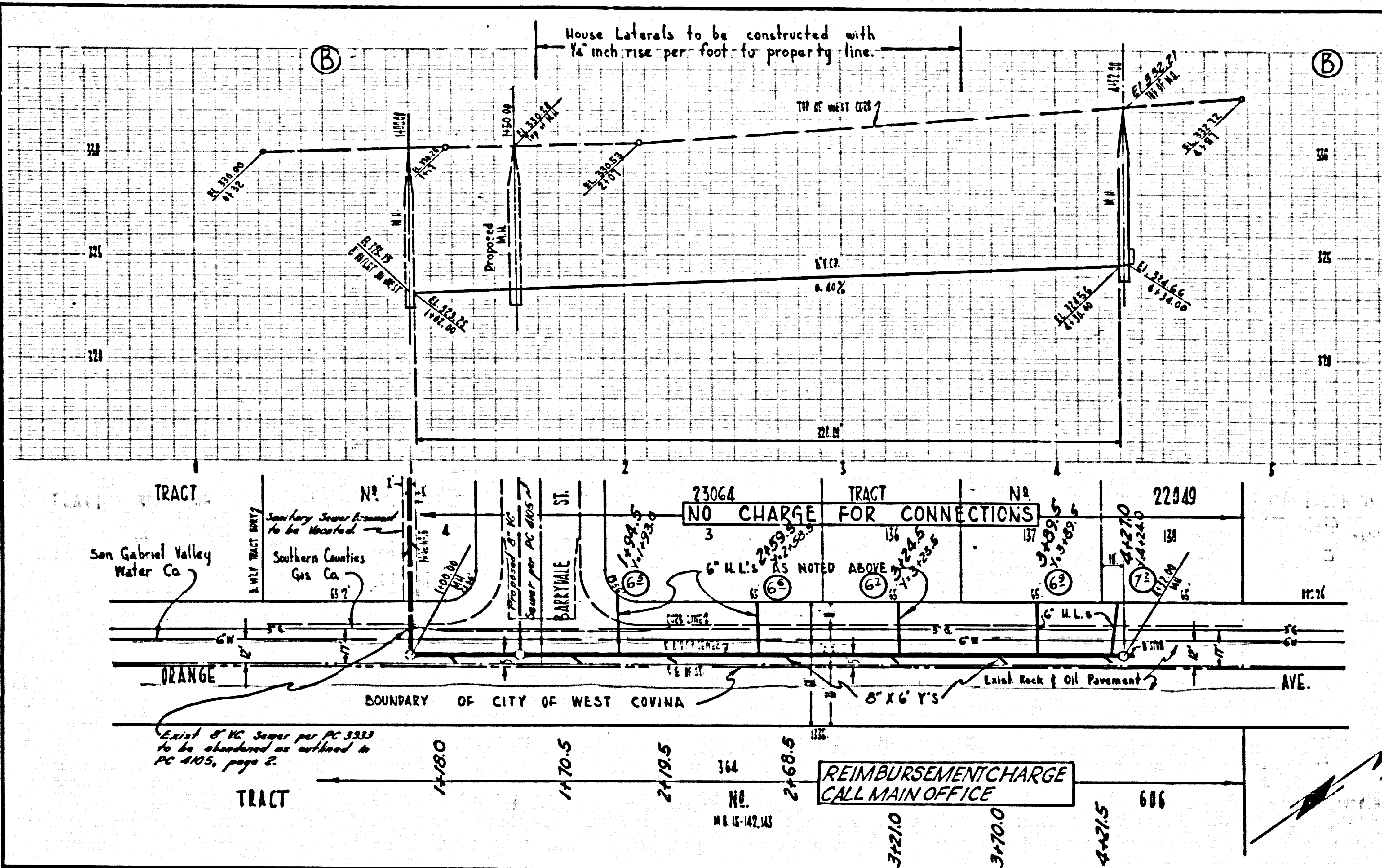
23,384





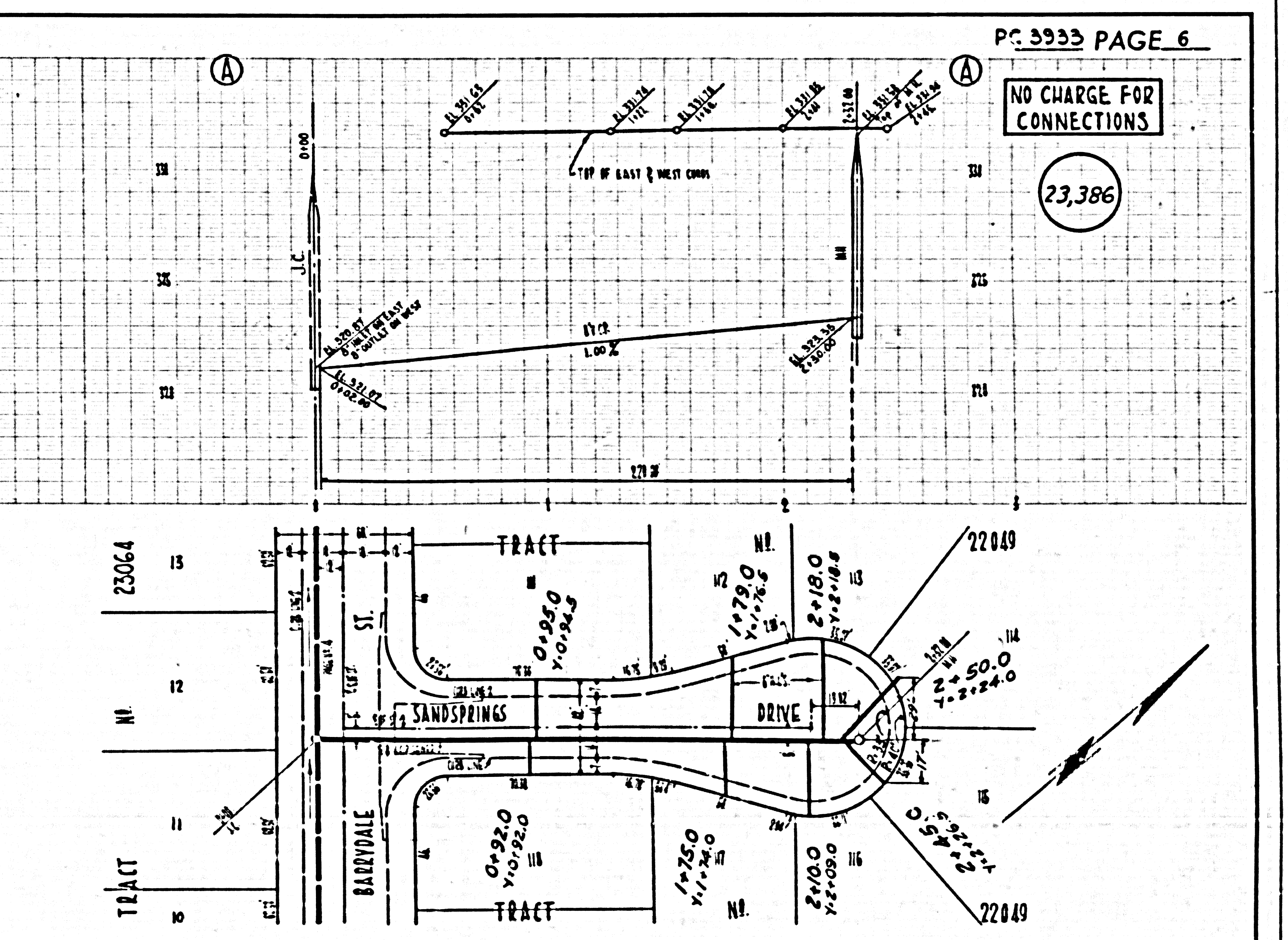
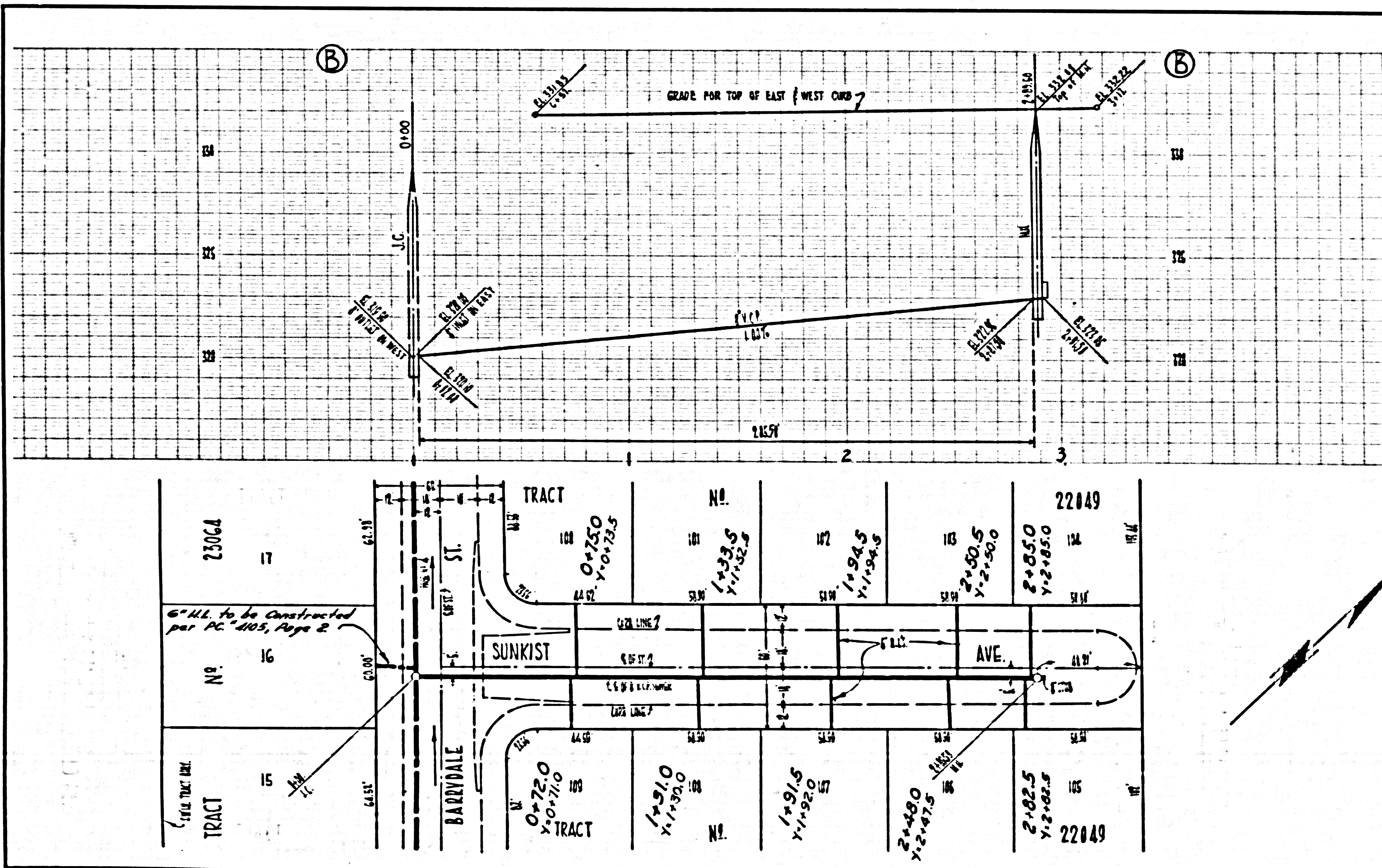
COLLECT CHARGES AS INDICATED

23,385



NO CHARGE FOR CONNECTIONS

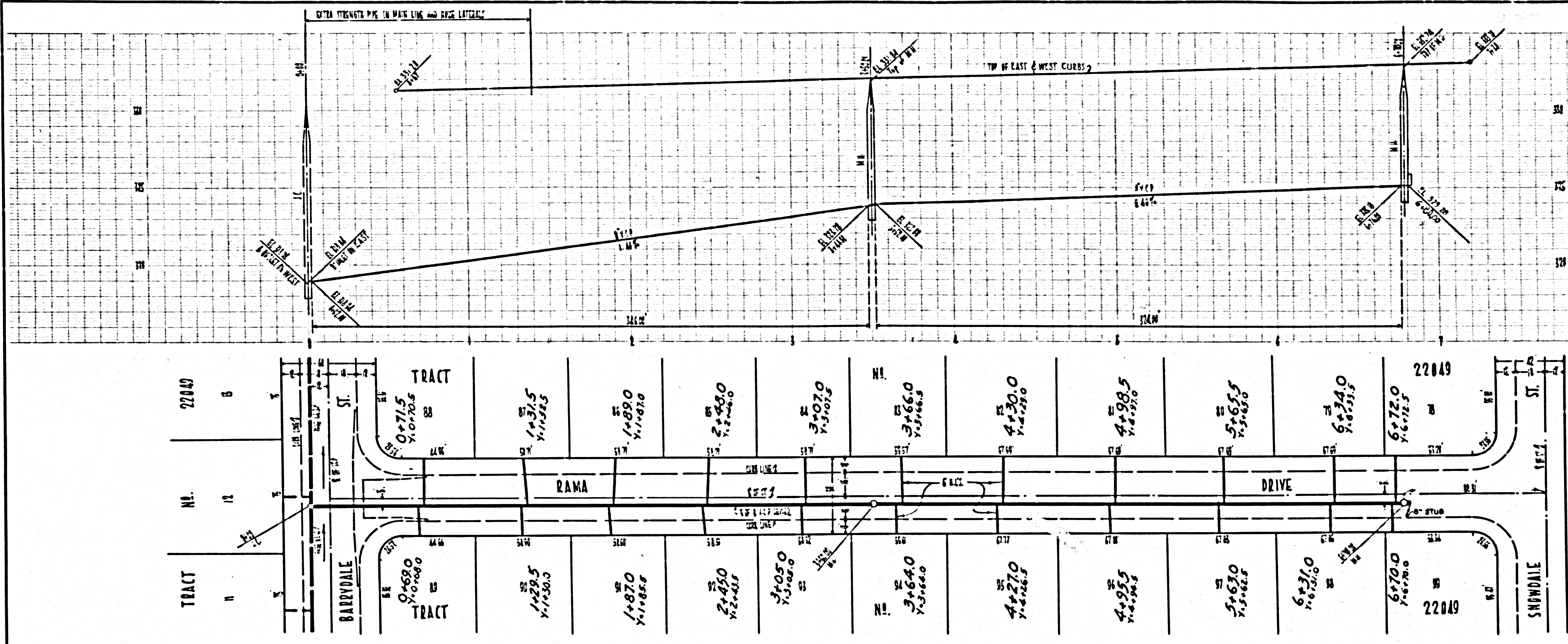
23,386





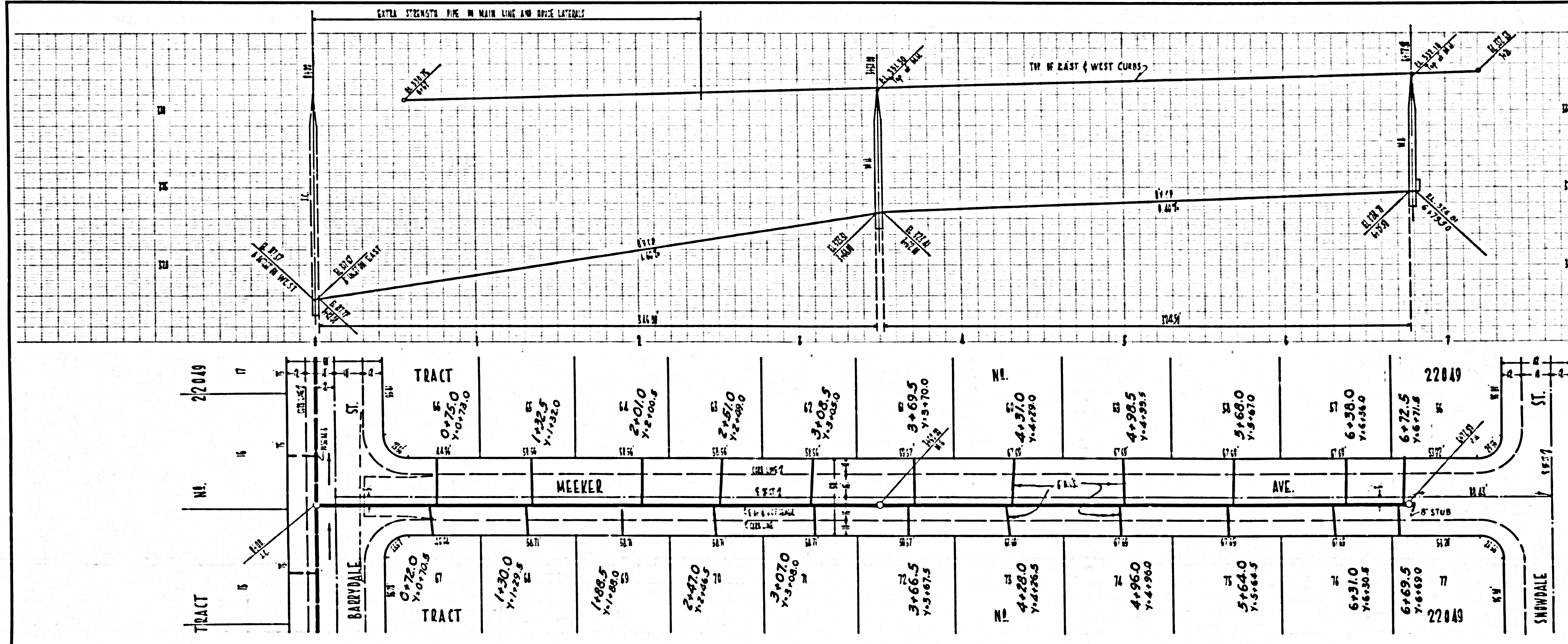
NO CHARGE FOR CONNECTIONS

23,387



NO CHARGE FOR CONNECTIONS

23,388



4  
PC 3933



