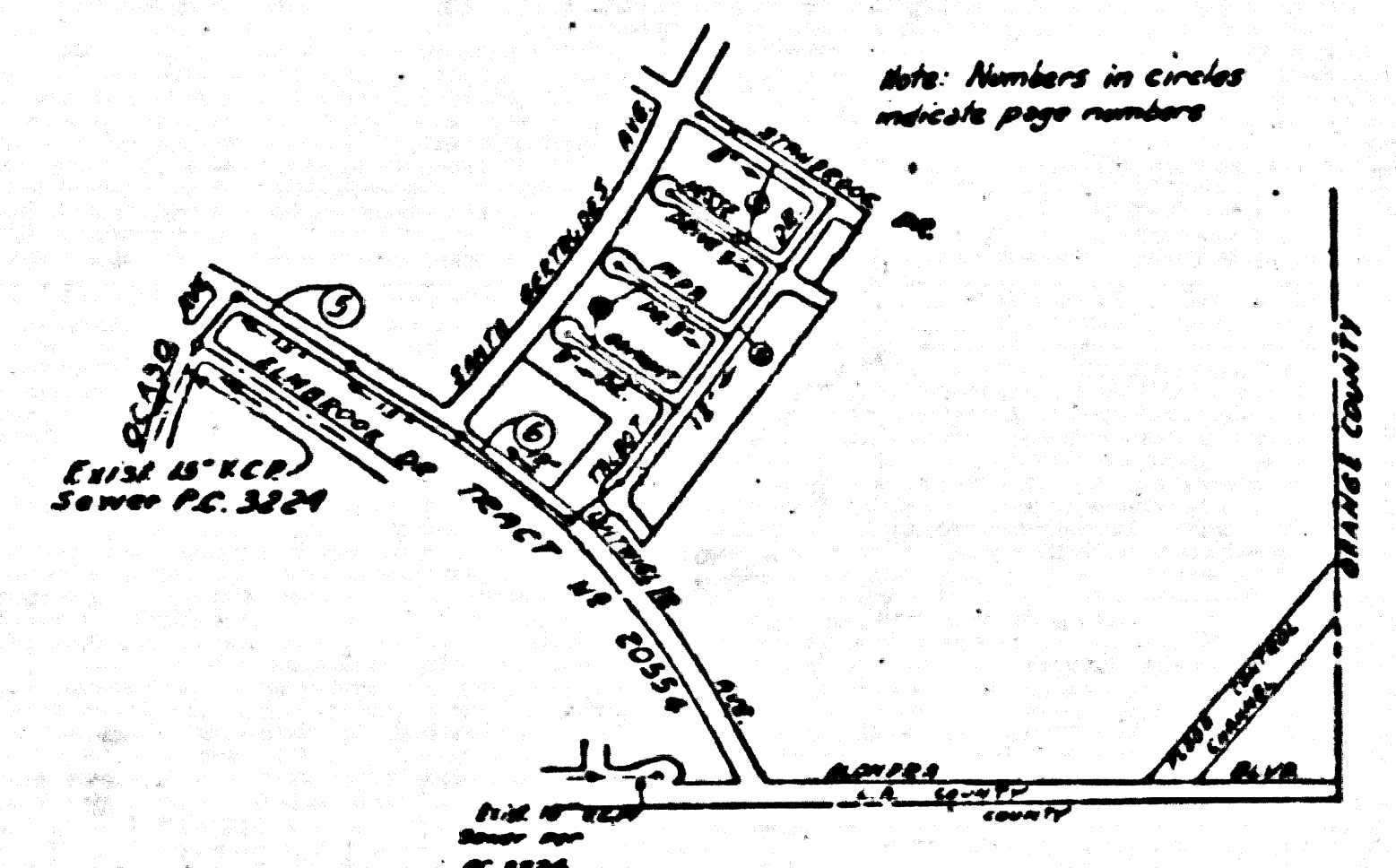


**BENCH MARK**  
 Stone lid and Luitwiler Ave; A Sid. County Surveyor Monument Marked 37.25  
 Set in concrete 15" below the surface of the intersection of the center line of  
 Luitwiler Ave and the center line of Mandro Blvd. a well cut through the  
 pavement and protected by a Cast Iron Over marked "County Surveyor  
 Monument."  
 Co. Surv. F.D. 1204-6 1952 Adj. Elev. 109.862'



SHEET	PAGES
1	1-4
2	5-6

**NORWALK BLDG. DIST. NO. 42**

- NOTE:**  
 Provide stakes on the property lines or property lines produced at right angles to the sewer line at the center line of each manhole.  
 No representative of the County Engineer will survey or layout any portion of the work.  
 The owner or his authorized representative shall furnish the County Engineer with grade sheets and stations for all house laterals and Y branches and shall provide stakes for them at their proper locations with stationing plainly marked. Any change in location shall be requested in writing by the owner or his representative.  
 No revisions shall be made in these plans without the approval of the County Engineer.
1. Use standard manhole frames and covers, S-a-117
  2. Use standard strength pipe except as noted.
  3. Use cement mortar for all vitrified clay pipe joints.
  4. Resurface all trench within paved area to meet L.A. County Road Dept. or California State Highway Dept. requirements in accordance with permit.
  5. Excise four feet of sewer at points of interference with poles, S-a-119.
  6. House laterals to be constructed with inverts at property line 6 feet below curb grade except as noted.
  7. All structures shall be brick sewer structures, S-a-104.
  8. For allowable leakage test, see Formula No. 2, Spec's., Sec. 54.
  9. Manhole tops in unimproved Rights-of-Way to be 6" above finish grade.
  10. The contractor shall satisfy himself of all substructures and shall be responsible for their location.
  11. The private engineer is to furnish the House Lateral depth of the property line below the top of curb elevation for each House Lateral, on the grade sheet.

**COLLECT CHARGES AS INDICATED**  
 775-6000 9-21-56

**REVISIONS:**  
 Page 5, Eliminate one M.H. and 30 lin. ft. of 12" V.C.R., Add 30 lin. ft. of 8" V.C.R.  
 By: *[Signature]*  
 Approved By: *[Signature]* 10-9-56  
 Office of County Engineer - R-42 1956

*dated 2-26-57 M. L. Linn*

PC. 3934  
 Page 1  
 Double Scale  
 TRACT NO. 20810  
 PRIVATE CONTRACT NO. 3934  
 W. S. 34  
 2 SHEETS  
 Scale: 1" = 40' JAN. 1956  
 PREPARED IN THE OFFICES OF  
**MCINTIRE & QUIROS INC.**  
 Sup. C. & G. No. 20810  
 FOR LEGEND SEE PLAN NO. S-a-64

**NOTE:**  
 Grades to which this improvement is to be constructed are shown on plans and profiles. Grade points for top of curb, center line of streets, or center line of alleys are shown by circles on profiles. At all points between designated points, the grade shall be established so as to conform to a straight line drawn between said designated points.  
 Elevations are in feet above M.S.C. & G.S. See level datum of 1929.  
 This drawing and the data herein are hereby made a part of the specifications.  
 Work shall be constructed according to specifications on file in the office of the County Engineer and shall be prosecuted only at the expense of the County Engineer.  
 Before work can be started, the contractor must obtain a permit to excavate in County streets from the L.A. County Road Dept., 108 W. 2nd St. and make a deposit with the County Engineer, Room 324, 113 South Broadway, sufficient to cover the cost of construction inspection and record plans.  
 Approval of this plan by the County of Los Angeles does not constitute a representation as to the accuracy of the location or the existence or non-existence of any underground utility, pipe, or structure within the limits of this project. This note applies to all sheets.  
 If work is to be done in a State Highway, a permit must be obtained from the State of California, Division of Highways, 120 South Spring Street.

**COUNTY OF LOS ANGELES, CALIFORNIA**  
 Approved, John A. Lamba, County Engineer Approved, A. M. Ryan  
*[Signatures]*  
 Chief Clerk of Board of Supervisors  
 Checked by: *[Signature]* 9-21-56  
 Office of County Engineer, Sup. C. & G. No. 20810

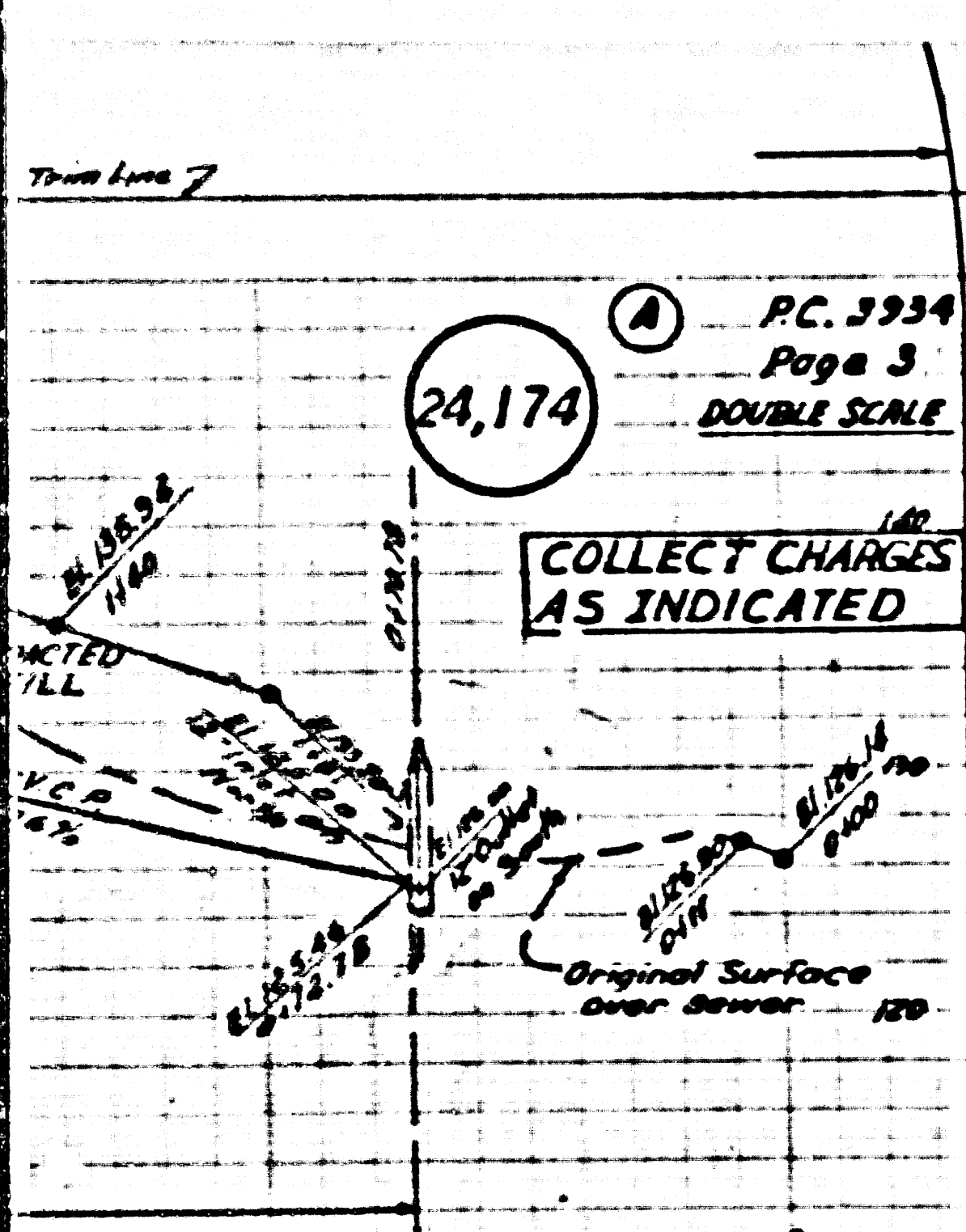
TRACT NO. 20810



PC. 3934  
Page 3  
DOUBLE SCALE

24,174

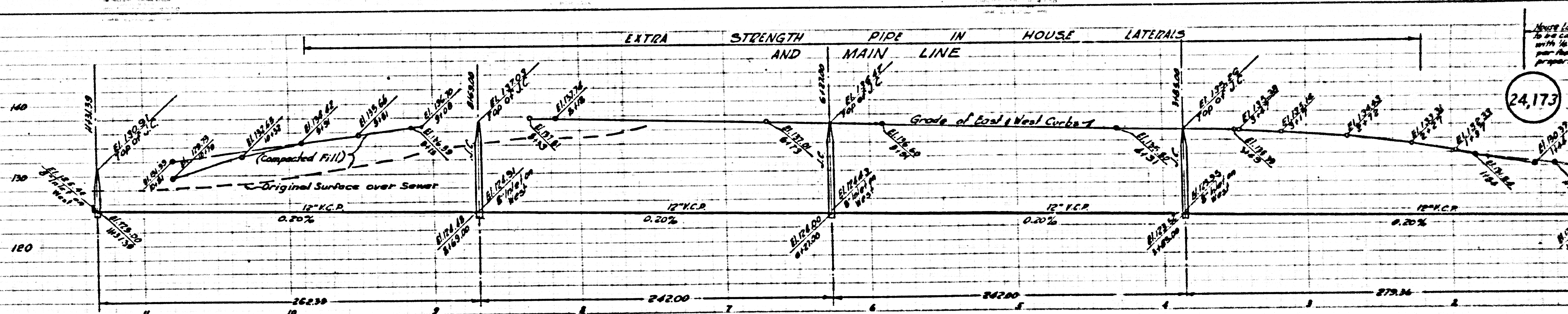
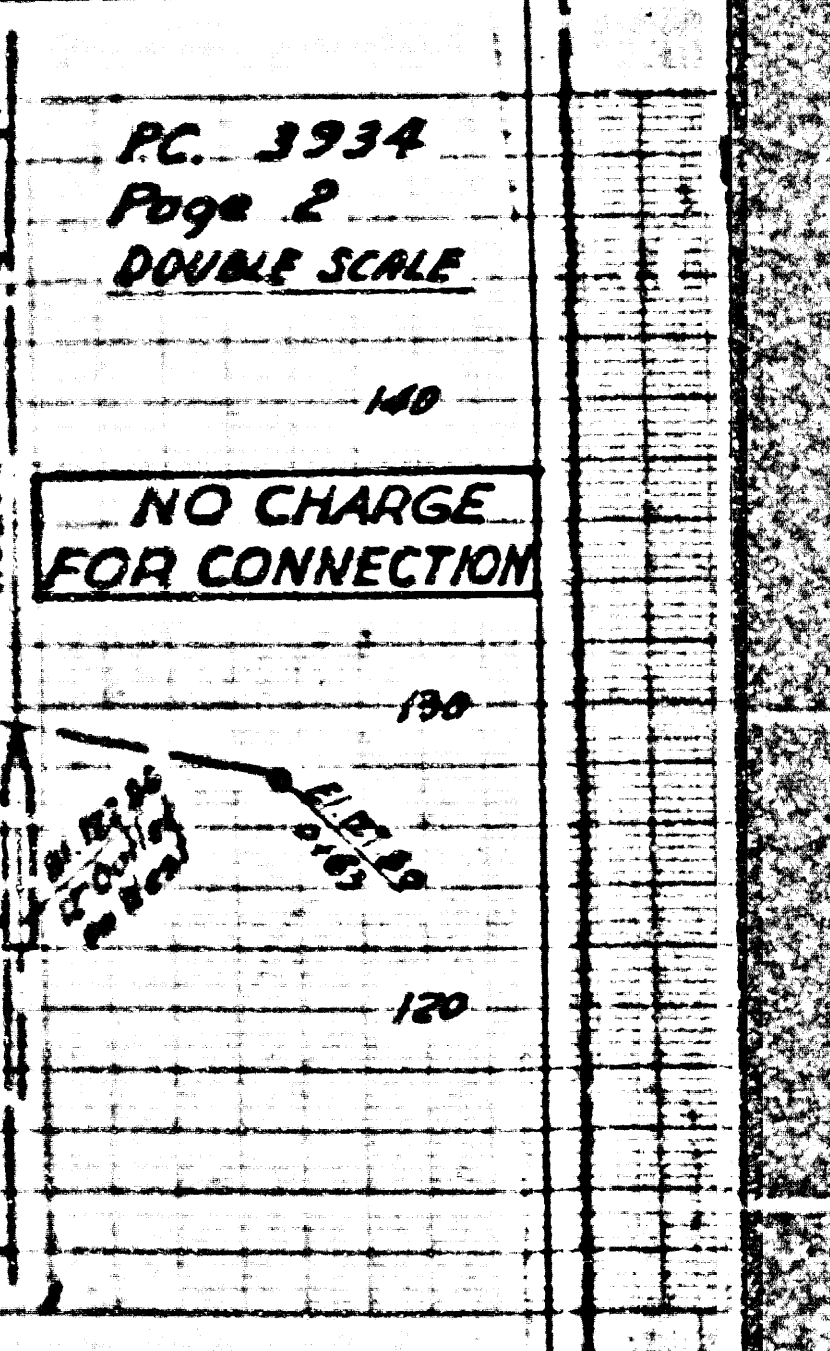
COLLECT CHARGES  
AS INDICATED



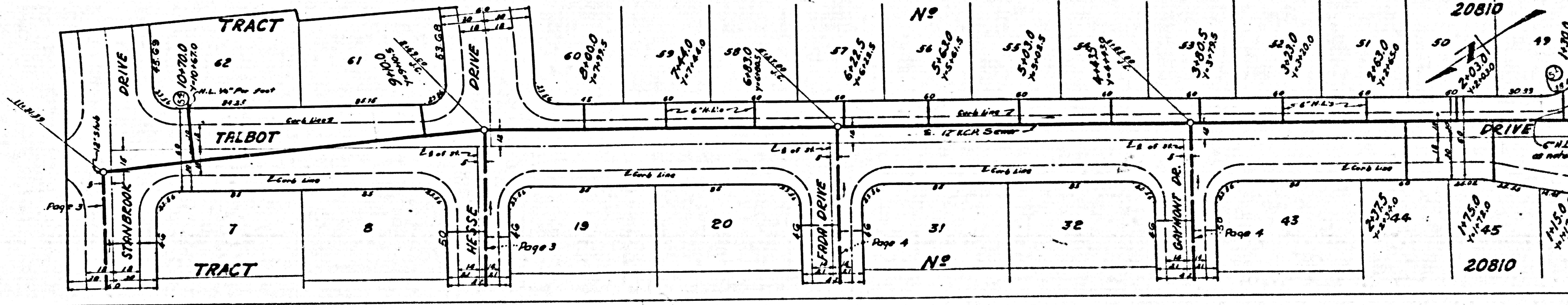
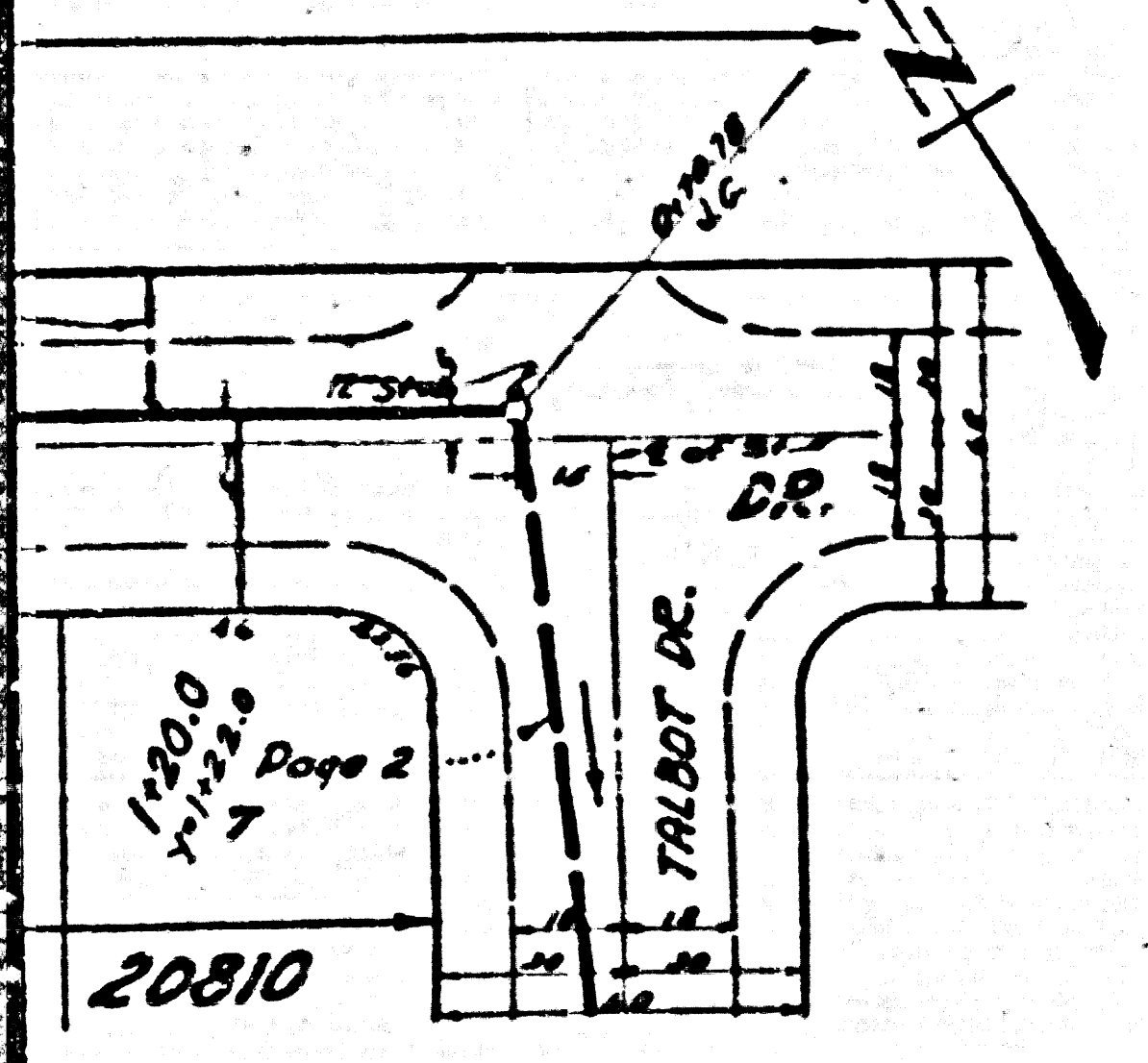
PC. 3934  
Page 2  
DOUBLE SCALE

24,173

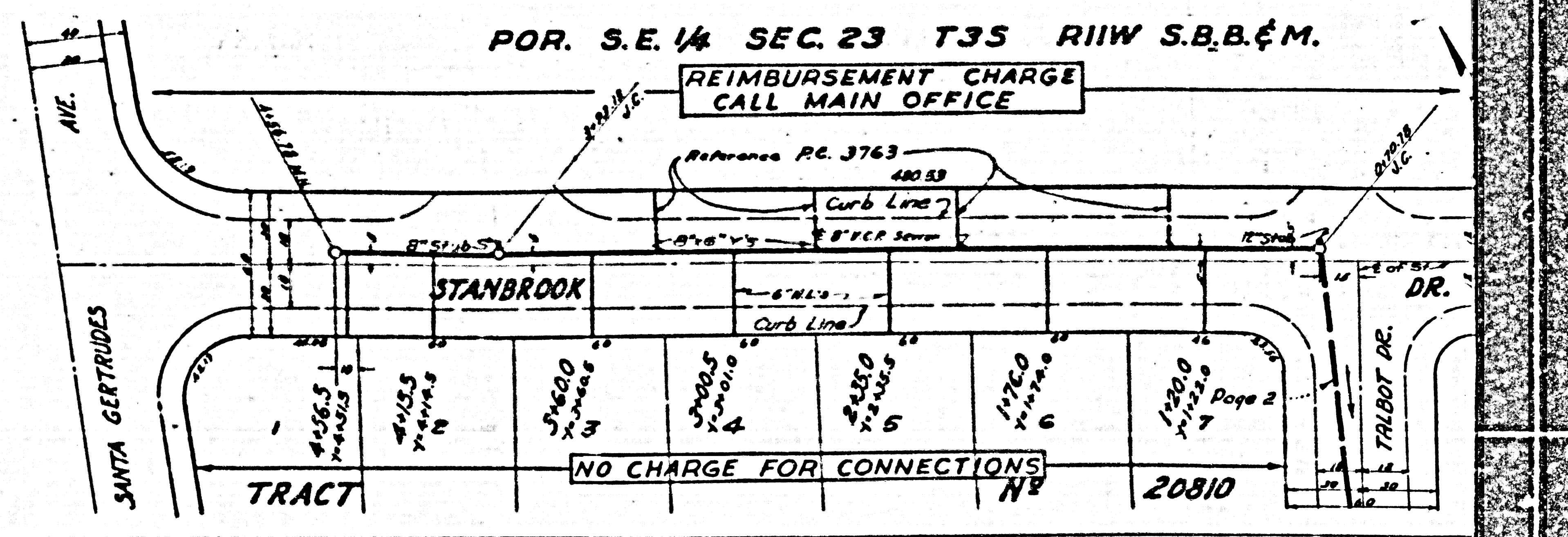
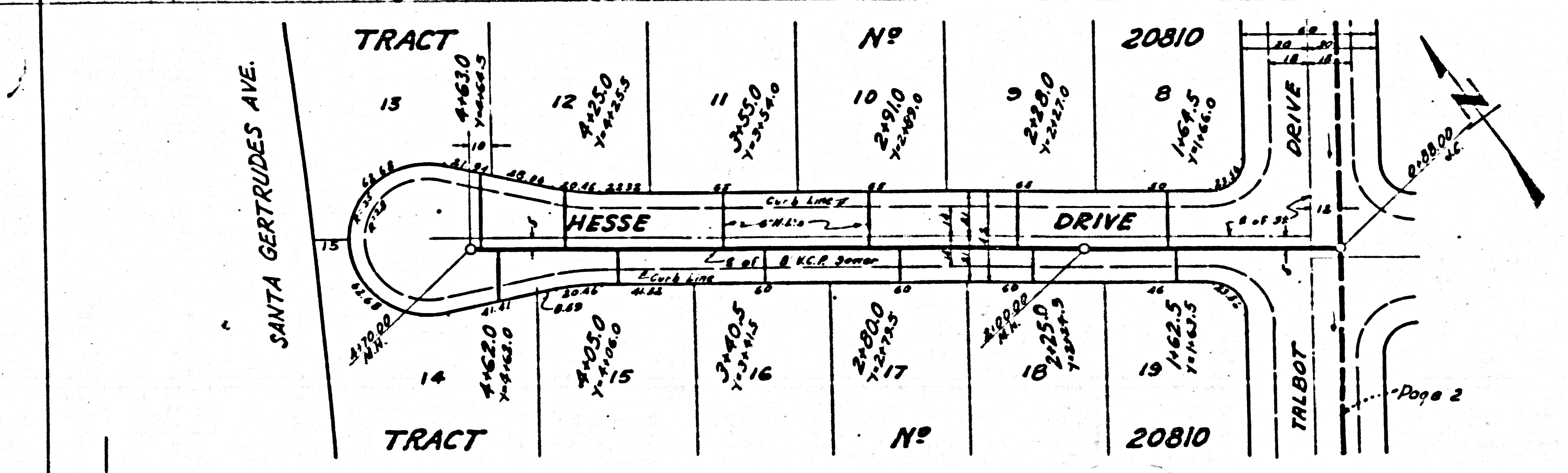
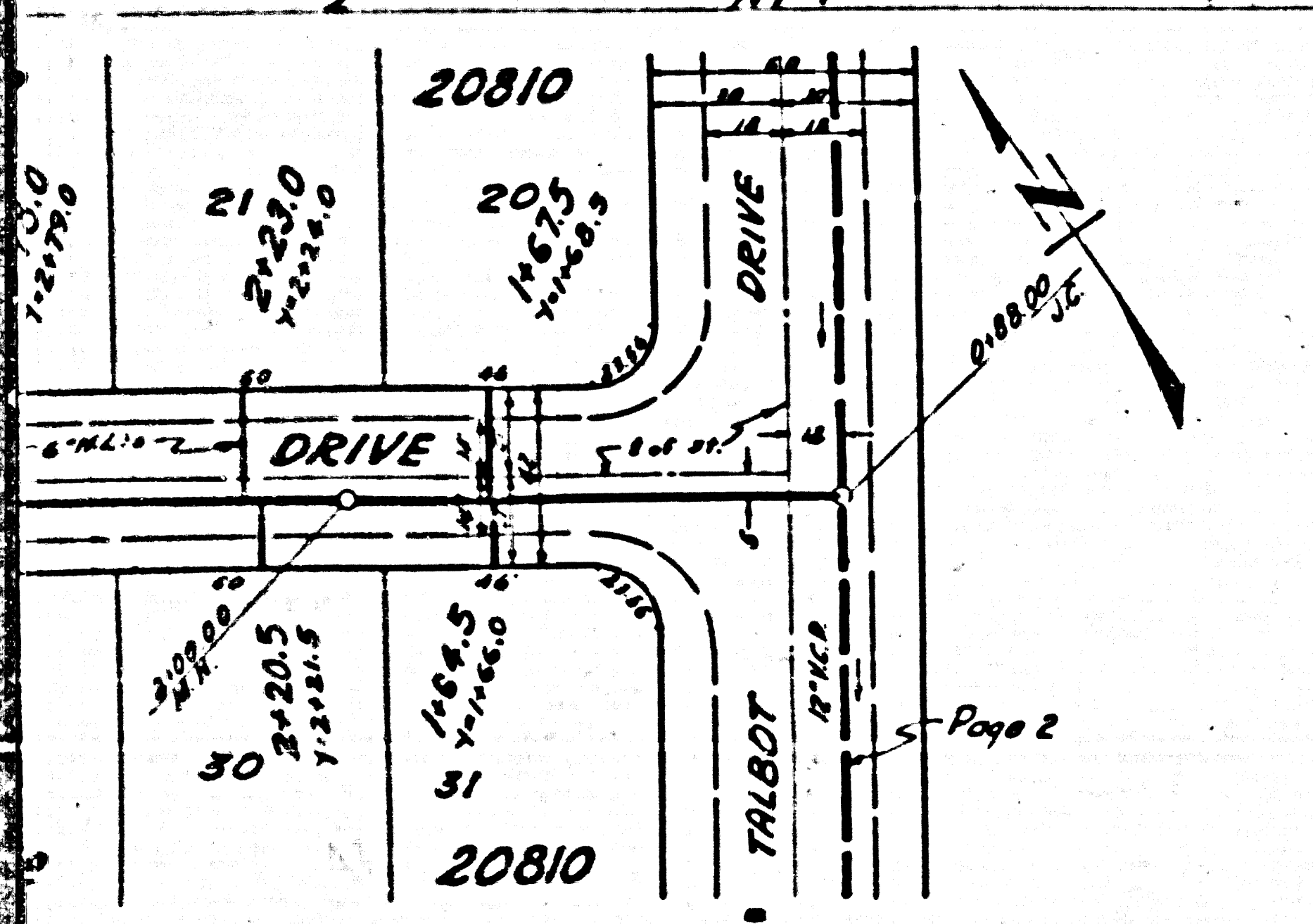
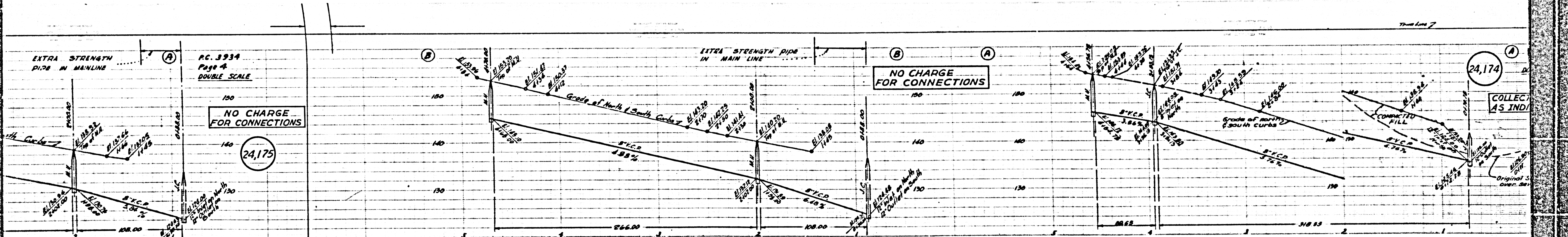
NO CHARGE  
FOR CONNECTION



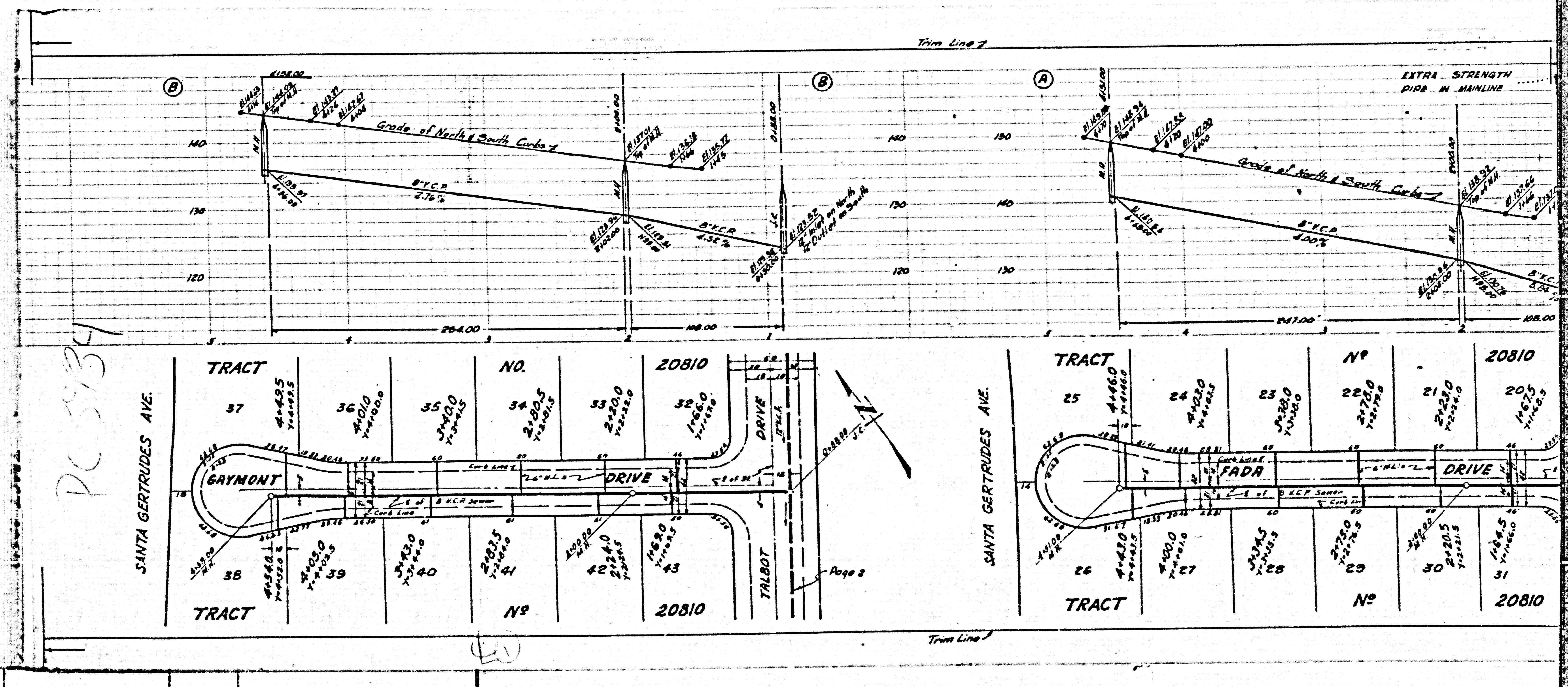
W.S.B. & M.











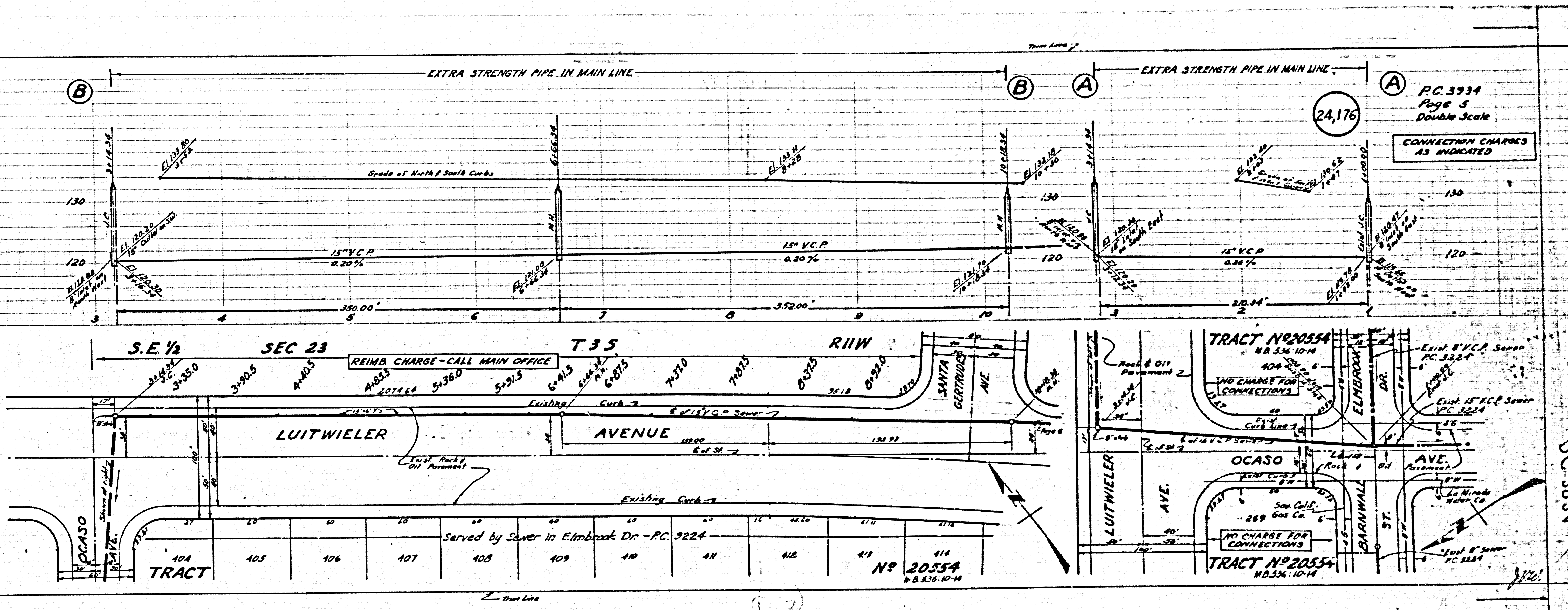
PC 5934

TRACT	NO.	TRACT	NO.	TRACT	NO.	TRACT	NO.
37	4425	36	4010	35	3760	34	2485
	Yards		Yards		Yards		Yards
	3300		3200		3100		3000
	Yards		Yards		Yards		Yards
	2800		2700		2600		2500
	Yards		Yards		Yards		Yards
	2400		2300		2200		2100
	Yards		Yards		Yards		Yards
	2000		1900		1800		1700
	Yards		Yards		Yards		Yards
	1600		1500		1400		1300
	Yards		Yards		Yards		Yards
	1200		1100		1000		900
	Yards		Yards		Yards		Yards
	800		700		600		500
	Yards		Yards		Yards		Yards
	400		300		200		100
	Yards		Yards		Yards		Yards
	0		0		0		0
	Yards		Yards		Yards		Yards



Scale  
CHARGES  
ATED

BY SEWER  
R/W  
# 20810



P.C. 3934  
Page 5  
Double Scale

NO CHARGE FOR CONNECTIONS

NO CHARGE FOR CONNECTIONS

NO CHARGE FOR CONNECTIONS

21



