

S.M. & L.A. CO. SURVEY 1098 ELEV. 160.790 U.S.C. & G.S. DATUM
CUT SPIKE, SOUTH END OF WEST HEADWALL
URR. CO. MAINLINE BRIDGE NE 6.16

NOTE:
SUBTRACT 0.15 FROM ELEV'S
SHOWN ON THESE PAGES TO
CHECK ABOVE S.M.

INDEX TABLE	
SHEETS	PAGES
3	6

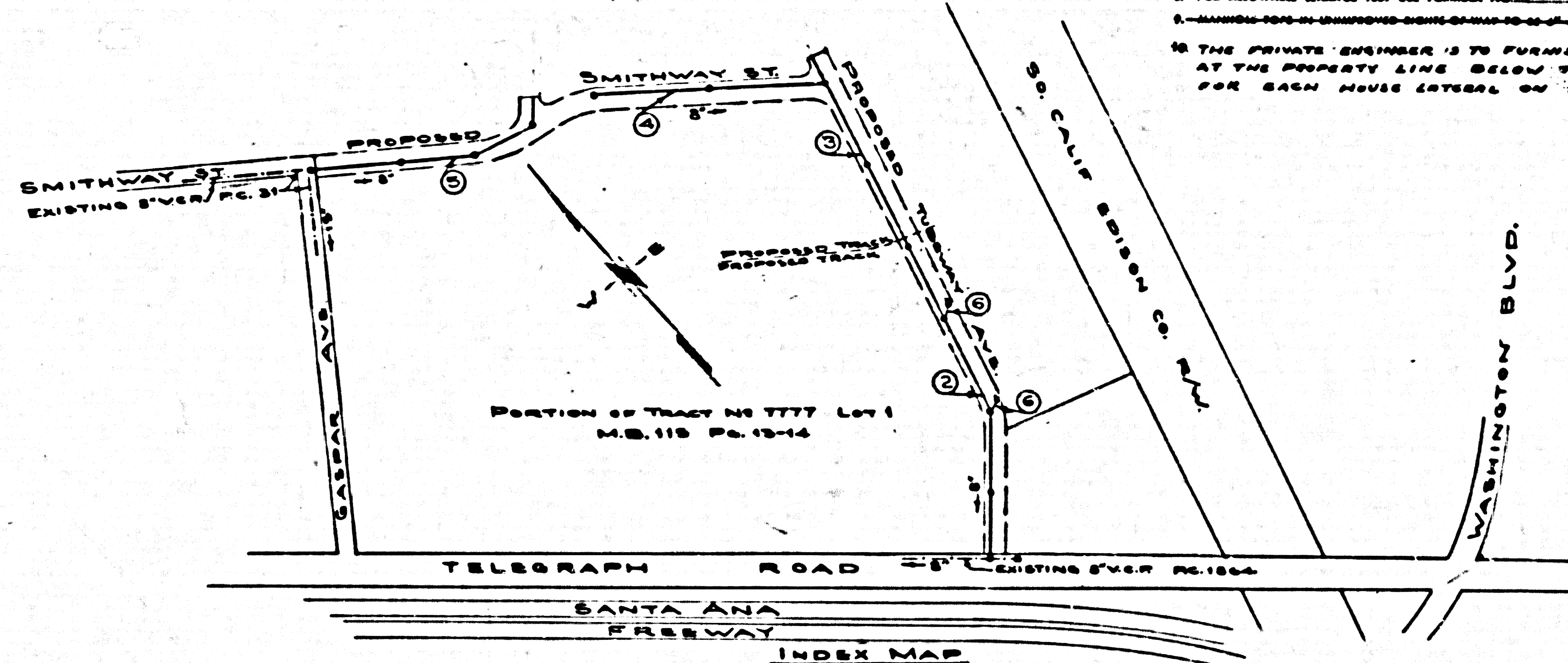
NO CHARGE
FOR CONNECTIONS
Leita 5-58

EAST LOS ANGELES BLDG. DIST. NO. 6

- NOTES:**
- PROVIDE STAKES ON THE PROPERTY LINE OR PROPERTY LINES PRODUCED AT RIGHT ANGLES TO THE SEWER LINE AT THE CENTER LINE OF EACH MANHOLE.
 - NO REPRESENTATIVE OF THE COUNTY ENGINEER WILL SURVEY OR LAYOUT ANY PORTION OF THE P.C.E.
 - THE OWNER OR HIS REPRESENTATIVE SHALL FURNISH THE COUNTY ENGINEER WITH GRAB SHEETS AND STATION FOR ALL HOUSE LATERALS AND T BRANCHES AND SHALL PROVIDE STAKES FOR THEM AT THEIR PROPER LOCATIONS WITH STATIONING PLANNED THEREON. ANY CHANGE IN LOCATION SHALL BE INDICATED IN WRITING BY THE OWNER OR HIS REPRESENTATIVE. NO REVISIONS SHALL BE MADE IN THESE PLANS WITHOUT THE APPROVAL OF THE COUNTY ENGINEER.
 - USE STANDARD MANHOLE FRAMES AND COVERS, S.A.-117, EXCEPT AS NOTED.
 - USE STANDARD STRENGTH PIPE EXCEPT AS NOTED.
 - USE CEMENT MORTAR FOR ALL VITRIFIED CLAY PIPE JOINTS.
 - RESURFACE ALL TRENCH WITHIN PAVED AREA TO MEET L.A. COUNTY ROAD DEPT. OR CALIF. STATE HIGHWAY DEPT. REQUIREMENTS IN ACCORDANCE WITH PERMITS.
 - INCLUDE FOUR FEET OF SEWER AT POINTS OF INTERFERENCE WITH POLES, S.A.-119.
 - HOUSE LATERALS TO BE CONSTRUCTED WITH 1/2" RIBS PER FOOT TO EDGE OF R/W.
 - ALL STRUCTURES SHALL BE BRICK SEWER STRUCTURES, S.A.-104, EXCEPT AS NOTED.
 - FOR ALLOWABLE LEAKAGE TEST USE FORMULA NO. 1, SPEC. SEC. II.
 - THE PRIVATE ENGINEER IS TO FURNISH THE HOUSE LATERAL DEPTH AT THE PROPERTY LINE BELOW THE TOP OF CURB ELEVATION FOR EACH HOUSE LATERAL ON THE GRADE SHEET.

PROFILE ALIGNMENT AND GRADE OF **P.C. 3936**
SANITARY SEWERS PAGE 1
TO BE CONSTRUCTED IN
RIGHT OF WAY IN
TRACT NO 7777 LOT 1
M.B. 115 13-14 **(23,173)**

PRIVATE CONTRACT NO. 3936
W.S. 36 **(4)**
3 SHEETS, 5 PAGES
SCALE: VERT. 1" = 4'
HORIZ. 1" = 40'
MARCH, 1956
PREPARED IN THE OFFICES OF
UNION PACIFIC RAILROAD COMPANY
R. L. Adams
REG. C. E. NO. 406
FOR LEGEND SEE PLAN NO. S-A-64



APPROVED
INDUSTRIAL WASTE DIVISION
BY *Arthur Rickett*

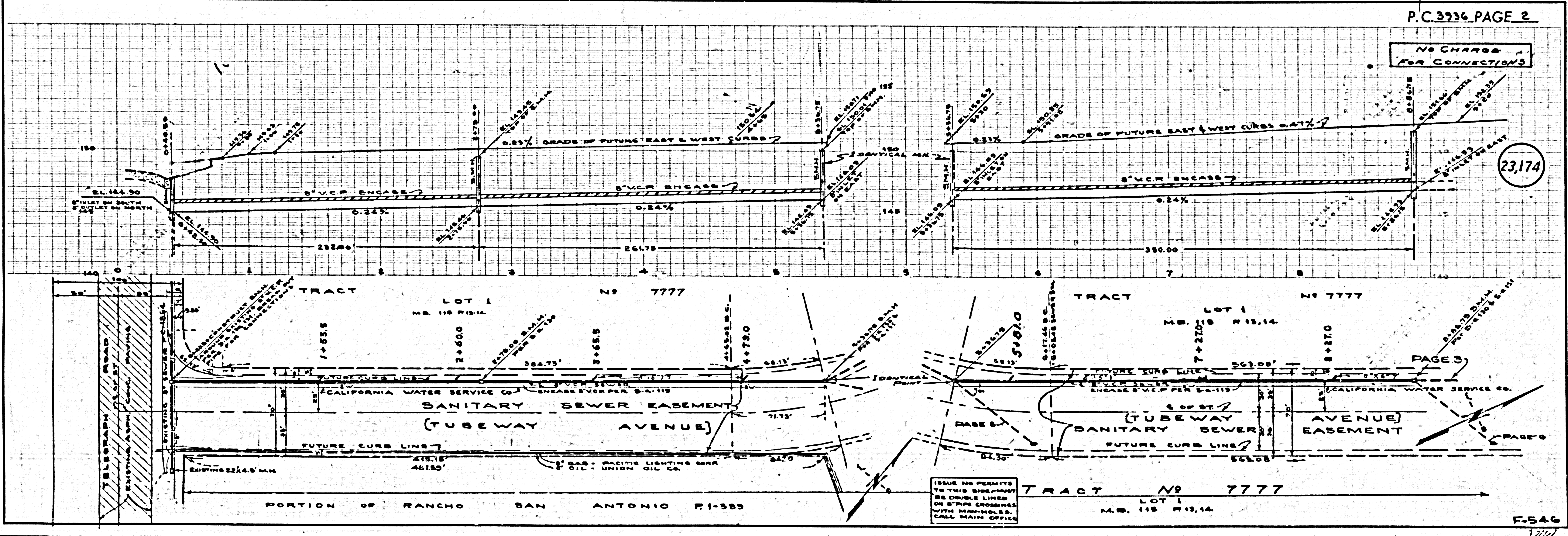
APPROVED, JOHN A. LAMBE, COUNTY ENGINEER
APPROVED, A. M. BAWN, CHIEF ENGINEER
BY *A. P. Collins* SANITATION ENGINEER
BY *H. Post* CHIEF ENGINEER
CHECKED BY *P. K. Kahan* 5-2-56
OFFICE OF COUNTY ENGINEER, M.B. C. E. NO. 7860

NOTE:
GRADES TO WHICH THIS IMPROVEMENT IS TO BE CONSTRUCTED ARE SHOWN ON PLANS AND PROFILES. GRADE POINTS FOR TOP OF CURB, CENTER LINE OF STREETS, OR CENTER LINE OF ALLEYS ARE SHOWN BY CIRCLES ON PROFILES. AT ALL POINTS BETWEEN DESIGNATED POINTS THE GRADE SHALL BE ESTABLISHED SO AS TO COMFORM TO A STRAIGHT LINE DRAWN BETWEEN SAID DESIGNATED POINTS.
ELEVATIONS ARE IN FEET ABOVE U.S.C. & G.S. SEA LEVEL DATUM OF 1929.
THE DRAWING AND THE DATA HEREON ARE HEREBY MADE A PART OF THE SPECIFICATIONS.
WORK SHALL BE CONSTRUCTED ACCORDING TO SPECIFICATIONS ON FILE IN THE OFFICE OF THE COUNTY ENGINEER AND SHALL BE PROSECUTED ONLY IN THE PRESENCE OF THE COUNTY ENGINEER.
WHEN WORK CAN BE STARTED, THE CONTRACTOR MUST OBTAIN A PERMIT TO EXCAVATE IN COUNTY STREETS FROM THE L.A. COUNTY ROAD DEPT., FOR THE 2ND ST. AND MAKE A DEPOSIT WITH THE COUNTY ENGINEER, ROOM 334 PAN AMERICAN BUILDING, 330 SPOKANE STREET TO COVER THE COST OF CONSTRUCTION INSPECTION AND RECORD PLANS.
APPROVAL OF THIS PLAN BY THE COUNTY OF LOS ANGELES DOES NOT CONSTITUTE A REPRESENTATION AS TO THE ACCURACY OF THE LOCATION OF OR THE EXISTENCE OR NON-EXISTENCE OF ANY UNDERGROUND UTILITY PIPE, OR STRUCTURE WITHIN THE LIMITS OF THIS PROJECT. THIS NOTE APPLIES TO ALL PAGES.
IF WORK IS TO BE DONE IN A STATE HIGHWAY, A PERMIT MUST BE OBTAINED FROM THE STATE OF CALIFORNIA, DIVISION OF HIGHWAYS, 120 SOUTH SPRING STREET.

INDEX MAP
SCALE 1" = 400'
PORTION OF TRACT 7777
P.C. 3936

ADDITIONAL SEWER PAGE 6
APPROVED BY *J. V. Oude* 5-25-56
OFFICE OF COUNTY ENGINEER, REG. C. E. NO. 8404

checked 8-2-56 McLaren



NO CHARGE
FOR CONNECTIONS

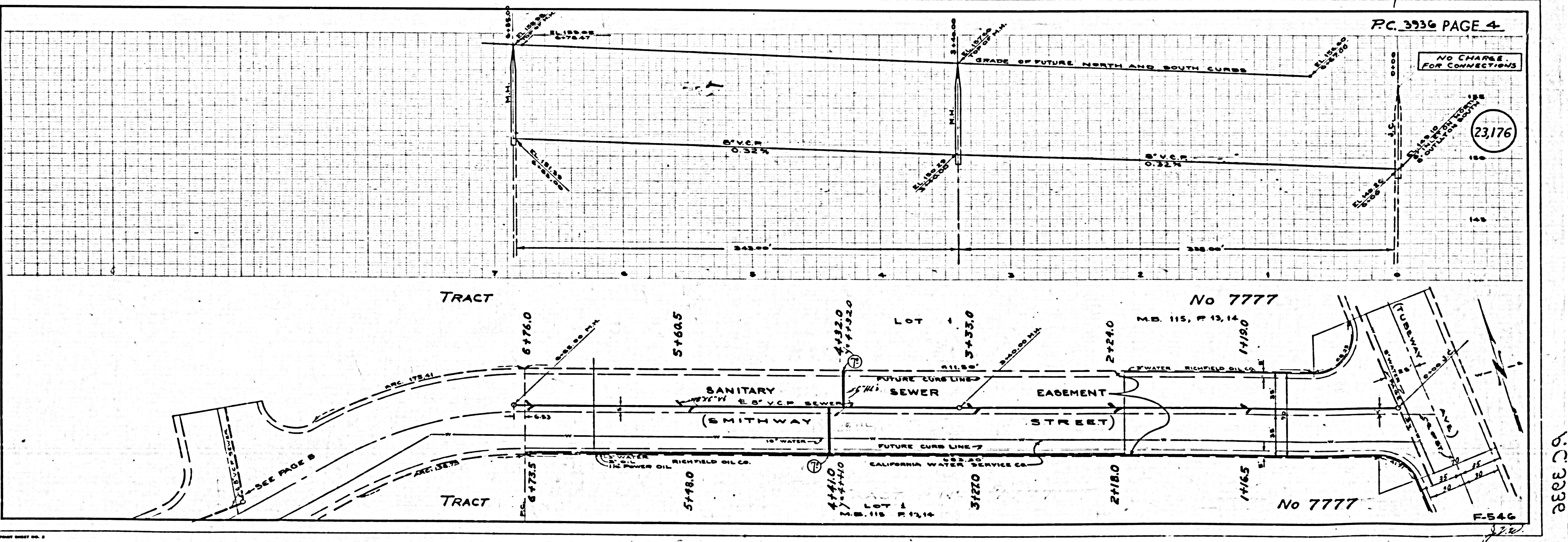
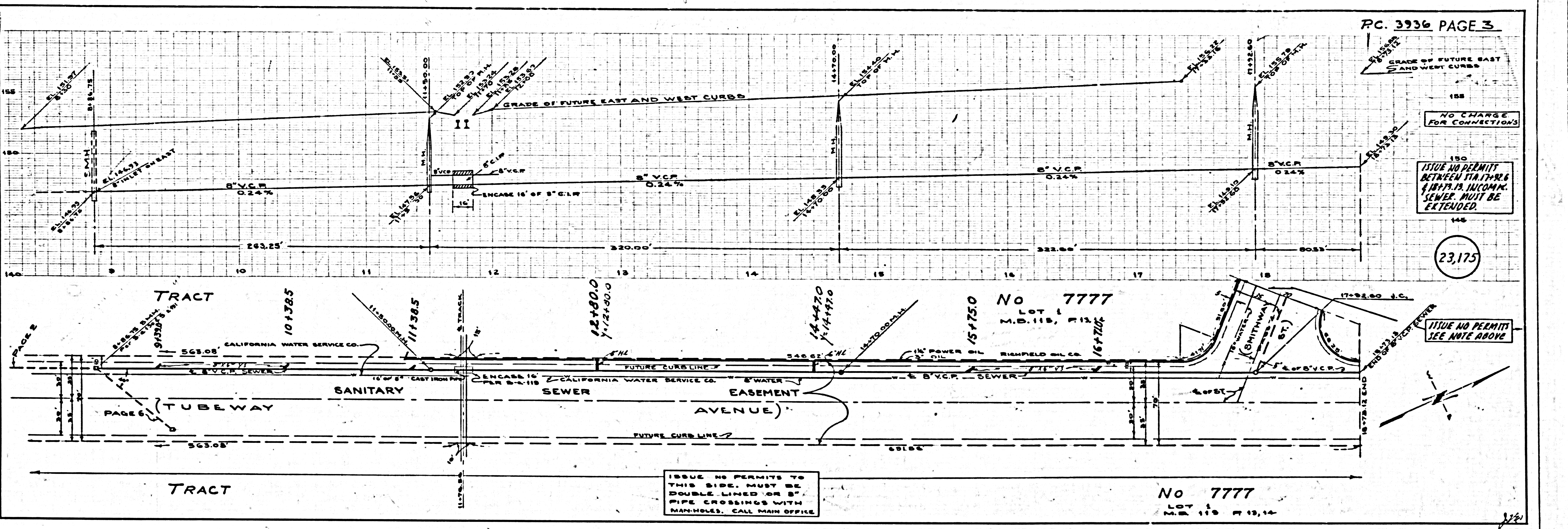
(23,174)

PAGE 3

ISSUE NO PERMITS
TO THIS SIDEWALK
BE DOUBLE LINED
OR 8" PIPE CROSSED
WITH MAN-HOLES.
CALL MAIN OFFICE

SEE P. 2

F-546



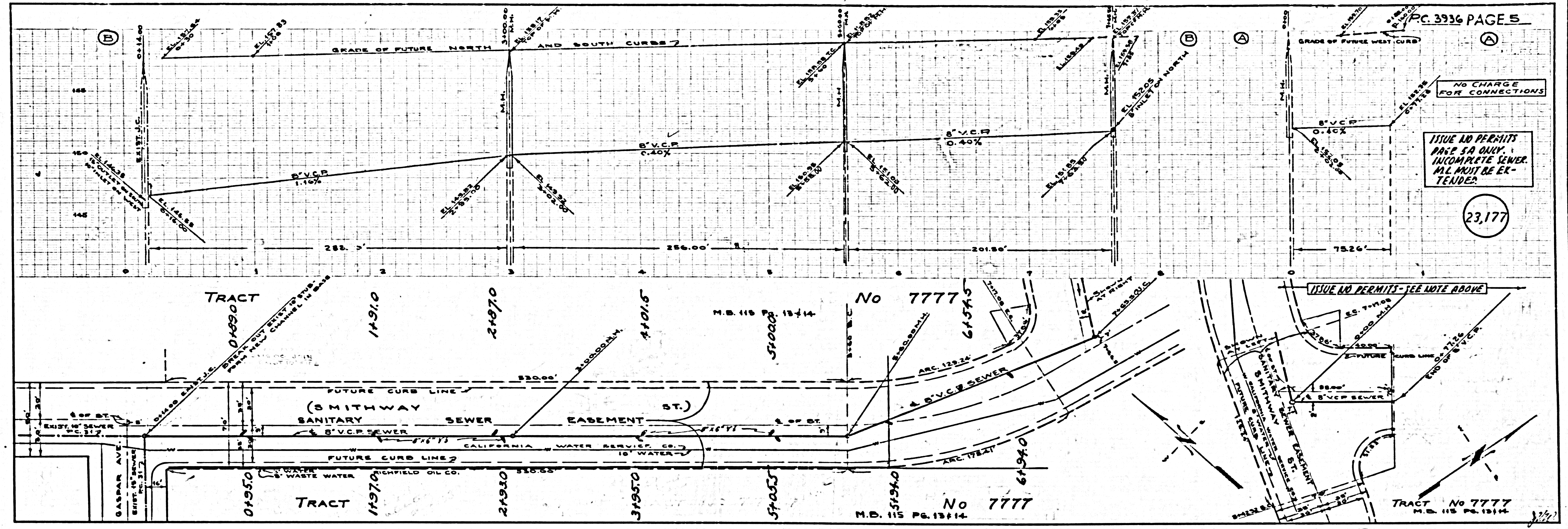
U.S.G. 700 001 CAL. BLUE PRINT SHEET NO. 2

PC 3936

NO CHARGE FOR CONNECTIONS

ISSUE NO PERMITS PAGE 5A ONLY. INCOMPLETE SEWER. ALL MUST BE EXTENDED.

23,177

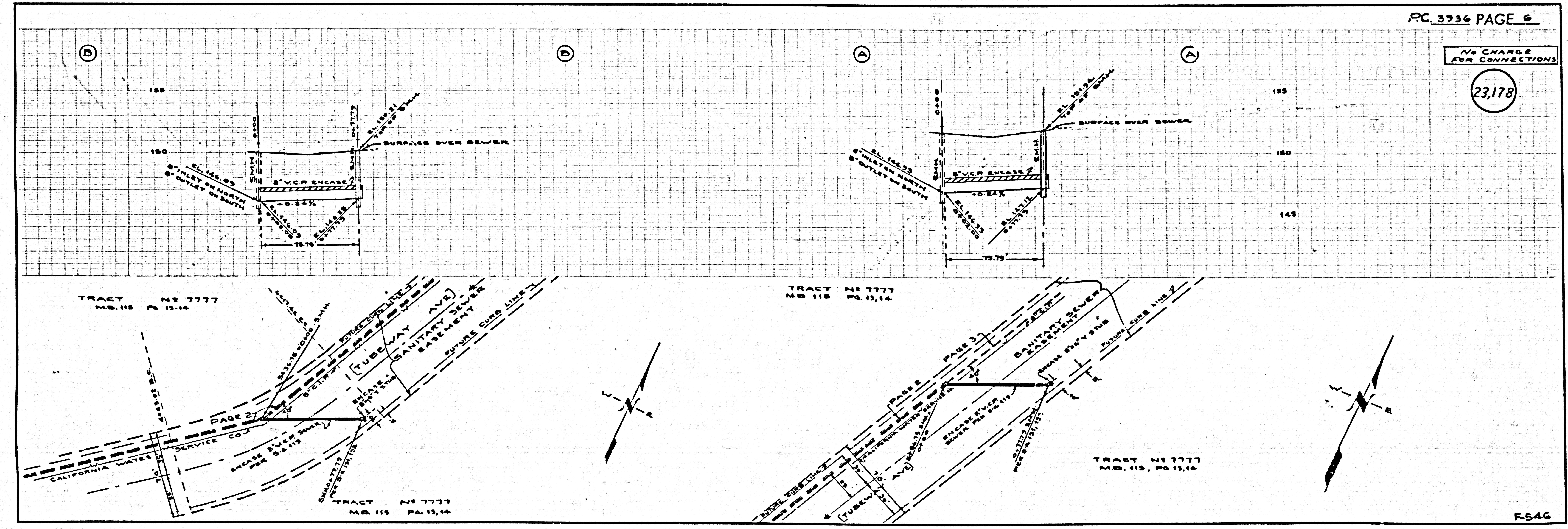


ISSUE NO PERMITS - SEE NOTE ABOVE

TRACT No 7777 M.D. 115 Pg. 13,14

NO CHARGE FOR CONNECTIONS

23,178



TRACT No 7777 M.D. 115 Pg. 13,14

TRACT No 7777 M.D. 115 Pg. 13,14

TRACT No 7777 M.D. 115 Pg. 13,14