

ALTAGENA BUILDING DISTRICT NO 3  
DOUBLE SCALE

Trim Line 2

P.C. 3940  
PAGE 1  
DOUBLE SCALE

27,814

P.C. 3940

PROFILE, ALIGNMENT AND GRADE OF  
SANITARY SEWERS  
TO BE CONSTRUCTED IN  
DEVONWOOD ROAD EXTENSION  
SANITARY SEWER RIGHT OF WAY

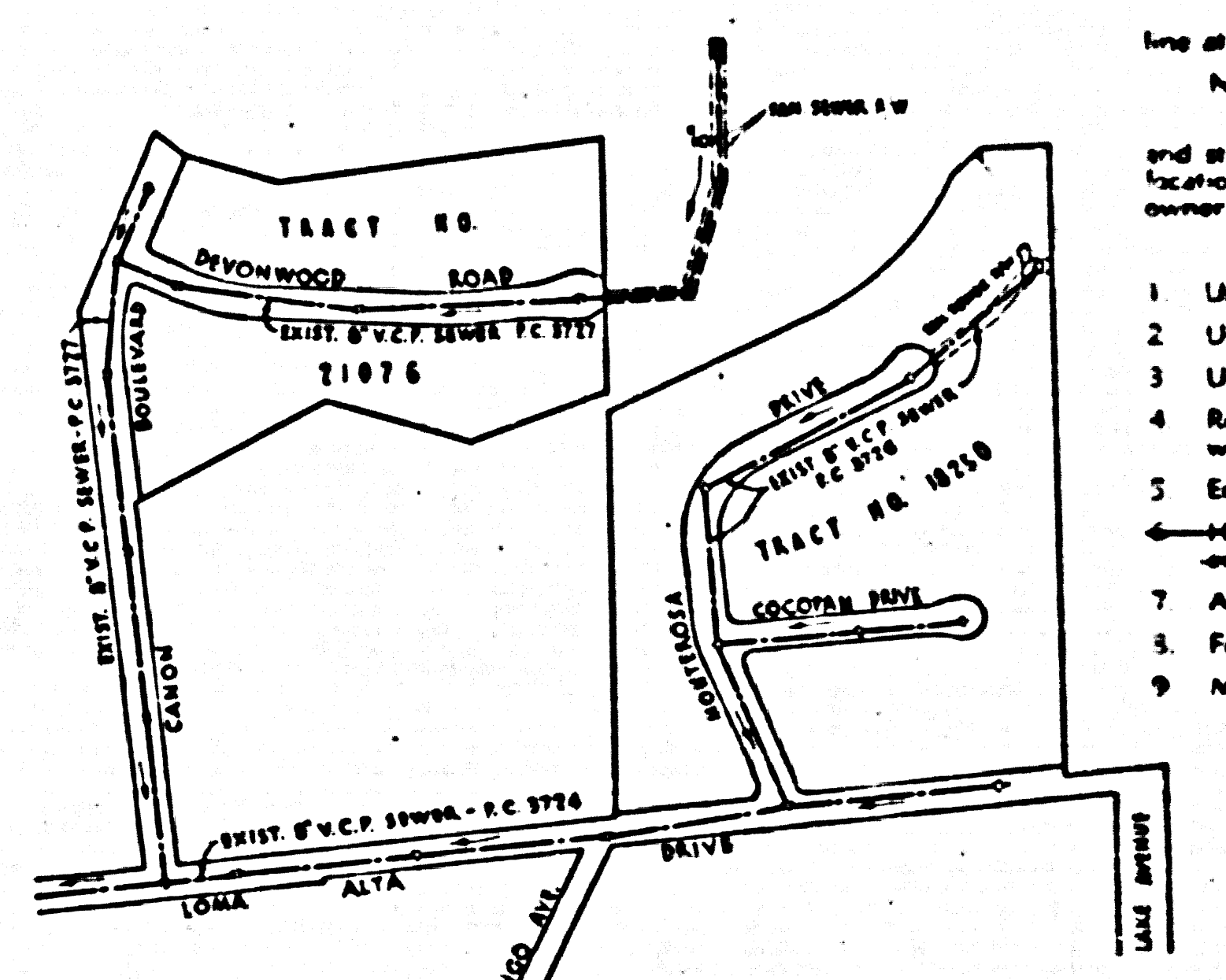
PRIVATE CONTRACT NO. 3940  
W. S. 50  
1 SHEET  
Scale: 1" = 40' March, 1956  
PREPARED BY THE OFFICE OF  
LEONARD H. GOWDY

*Leonard H. Gowdy*  
No. C. E. No. 1623  
FOR LEGEND SEE PLAN NO. S-664

NOTE:  
Grades to which this improvement is to be constructed are shown on plans and profiles. Grade points, the top of curbs, center line of sewers, or center line of alleys are shown by circles on profiles. At all points between designated points the grade shall be established so as to conform to a straight line drawn between said designated points.  
Elevations are in feet above U.S.C. & G.S. sea level datum of 1929.  
This drawing and the data hereon are hereby made a part of the specifications.  
Work shall be constructed according to specifications on file in the office of the County Engineer and shall be prosecuted only in the presence of the County Engineer.  
Before work can be started, the contractor must obtain a permit to excavate in County streets from the L.A. County Road Dept., 106 W. 2nd St., and make a deposit with the County Engineer, Room 324, 253 South Broadway, sufficient to cover the cost of construction inspection and record plans.  
Approval of this plan by the County of Los Angeles does not constitute a representation as to the accuracy of the location of or the existence or non-existence of any underground utility, pipe, or structure within the limits of this project. This note applies to all sheets.  
If work is to be done on a State Highway, a permit must be obtained from the State of California, Division of Highways, 120 South Spring Street.

COUNTY OF LOS ANGELES, CALIFORNIA  
Approved, John A. Lambie, County Engineer Approved, A. M. Ream  
CHIEF ENGINEER, SAN DIST. NO. 17  
*A. P. Collins* *H. P. ...*  
Checked by *P. P. ...* 6-17-56  
Office of County Engineer, San. & S. No. 2862

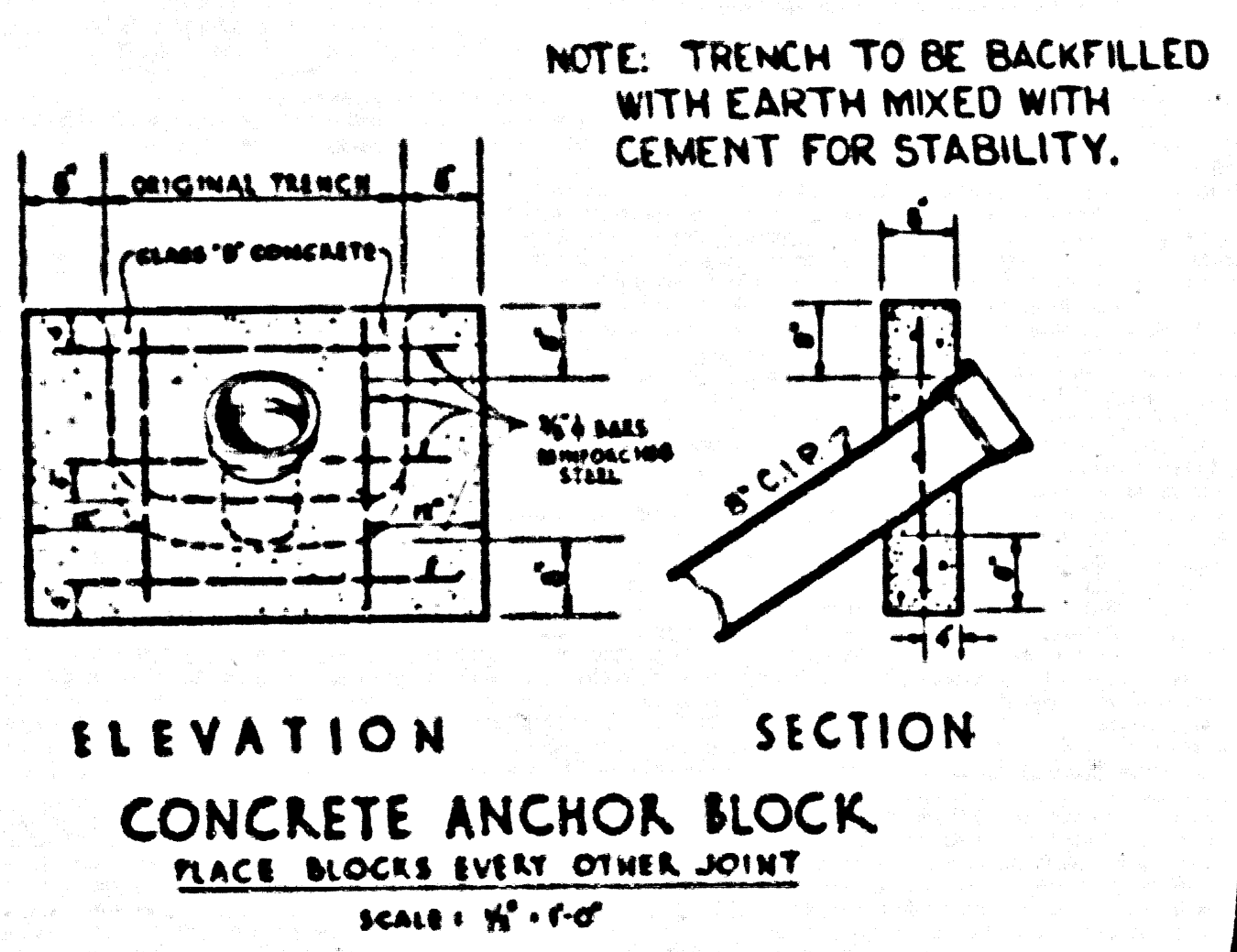
- NOTE:  
Provide stakes on the property lines or property lines produced at right angles to the sewer line at the center line of each manhole.  
No representative of the County Engineer will survey or layout any portion of the work.  
The owner or his authorized representative shall furnish the County Engineer with grade sheets and stations for all house laterals and Y branches and shall provide stakes for them at their proper locations with stationing plainly marked. Any change in location shall be requested in writing by the owner or his representative.  
No revisions shall be made in these plans without the approval of the County Engineer.
1. Use standard manhole frames and covers, S-a-117.
  2. Use standard strength pipe except as noted.
  3. Use cement mortar for all vitrified clay pipe joints.
  4. Resurface all trench within paved area to meet L.A. County Road Dept. or California State Highway Dept. requirements in accordance with permit.
  5. Encase four feet of sewer at points of interference with poles, S-a-119.
  6. House laterals to be constructed with joints at property line 6 feet below curb grade except as noted.
  7. All structures shall be brick sewer structures, S-a-104.
  8. For allowable leakage test, use Formula No. 1, Spec's., Sec. 51.
  9. Manhole tops in unimproved Rights-of-Way to be 6" above finish grade.



INDEX MAP  
P.C. NO. 3940  
SCALE: 1" = 300'

SHEET	PAGE
1	1-2

NO CHARGE FOR  
CONNECTIONS  
*L. Carter* 6-18-56



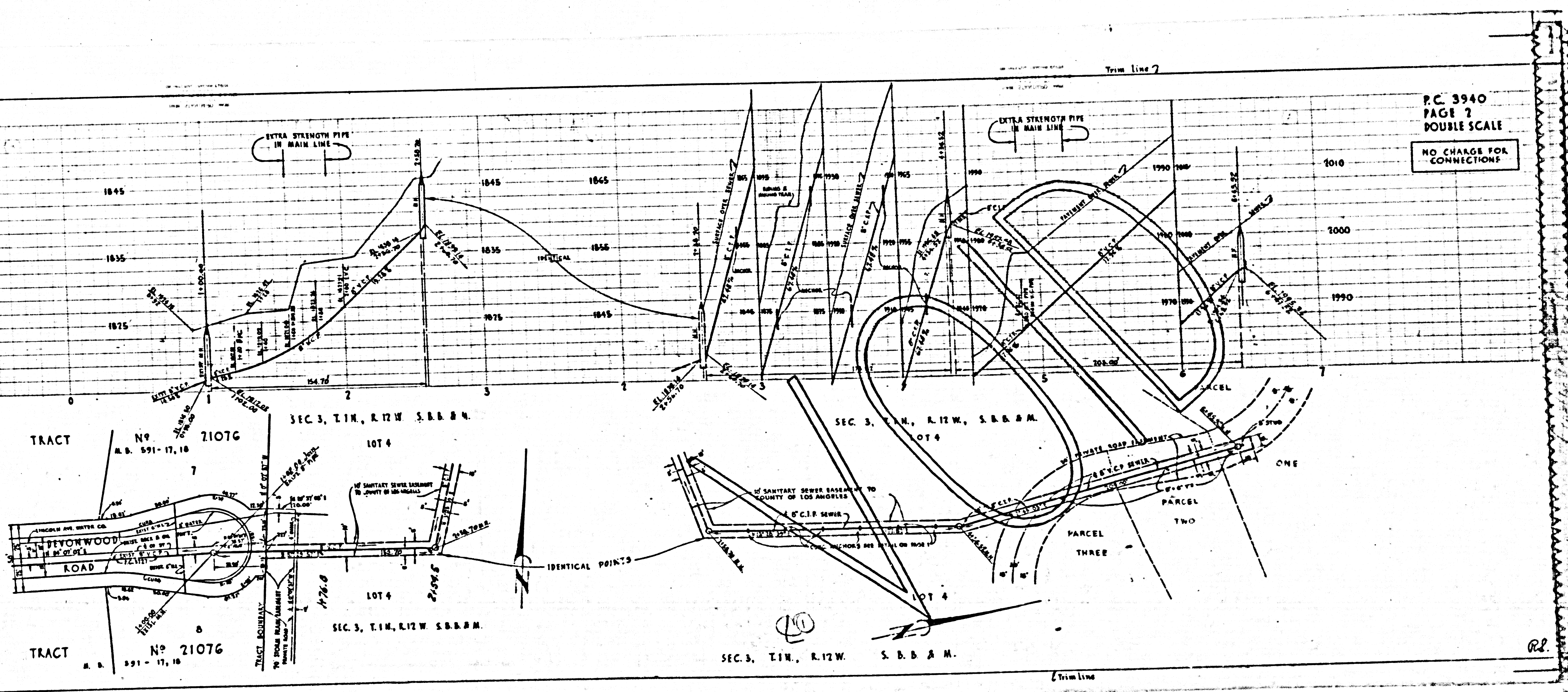
ELEVATION SECTION  
CONCRETE ANCHOR BLOCK  
PLACE BLOCKS EVERY OTHER JOINT  
SCALE: 1" = 1'-0"

NOTE: TRENCH TO BE BACKFILLED WITH EARTH MIXED WITH CEMENT FOR STABILITY.

5 IN. x 10 L.B.C. 1805, 674 ED. 1 & 38, PG. 22  
1 1/2 IN. NORTH 1/2 OF CONC. SLAB OF CONCRETE & STONE  
BENCH 50'2 EAST OF THE 4 OF NORTH LOMA ALTA DRIVE PRODUCED  
8 1/2' NORTH OF THE 4 OF EAST LOMA ALTA DRIVE PRODUCED

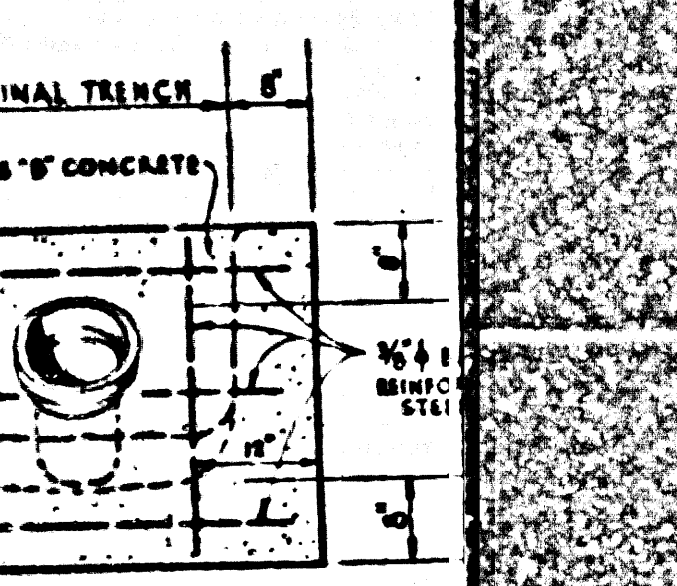
Trim Line

P.C. 3940



P.C. 3940  
PAGE 2  
DOUBLE SCALE

NO CHARGE FOR CONNECTIONS



ELEVATION  
CONCRETE ANCHOR  
PLACE BLOCKS EVERY 0'  
SCALE: 1/4" = 1'-0"

BEING 10  
1 FT. IN NORTH  
BENCH 50 FT. EAST  
& 10 FT. NORTH OF

RL