

WHITTIER BLDG. DIST. NO. 11

NOTE:  
Provide stakes on the property lines or property lines produced at right angles to the sewer line at the center line of each manhole.  
No representative of the County Engineer will survey or layout any portion of the work.  
The owner or his authorized representative shall furnish the County Engineer with grade sheets and stations for all house laterals and Y branches and shall provide stakes for them at their proper locations with stationing plainly marked. Any change in location shall be requested in writing by the owner or his representative.  
No revisions shall be made in these plans without the approval of the County Engineer.

1. Use standard manhole frames and covers, S-a-117.
2. Use standard strength pipe except as noted.
3. Use cement mortar for all vitrified clay pipe joints.
4. Resurface all trench within paved area to meet L. A. County Road Dept. or California State Highway Dept. requirements in accordance with permit.
5. Encase four feet of sewer at points of interference with poles, S-a-119.
6. House laterals to be constructed with laterals of property line  $\frac{1}{2}$  foot below curb grade except as noted.
7. All structures shall be brick sewer structures, S-a-104.
8. For allowable leakage test, use Formula No. 1 Spec's, Sec. 84.
9. Manhole tops in unimproved Rights-Of-Way to be 6" above finish grade.
10. The Private Engineer is to furnish the House Lateral depth at the property line below the top of curb elevation for each House Lateral, on the Grade Sheet.

PROFILE, ALIGNMENT AND GRADE OF  
SANITARY SEWERS  
TO BE CONSTRUCTED IN

TRACT N° 21165

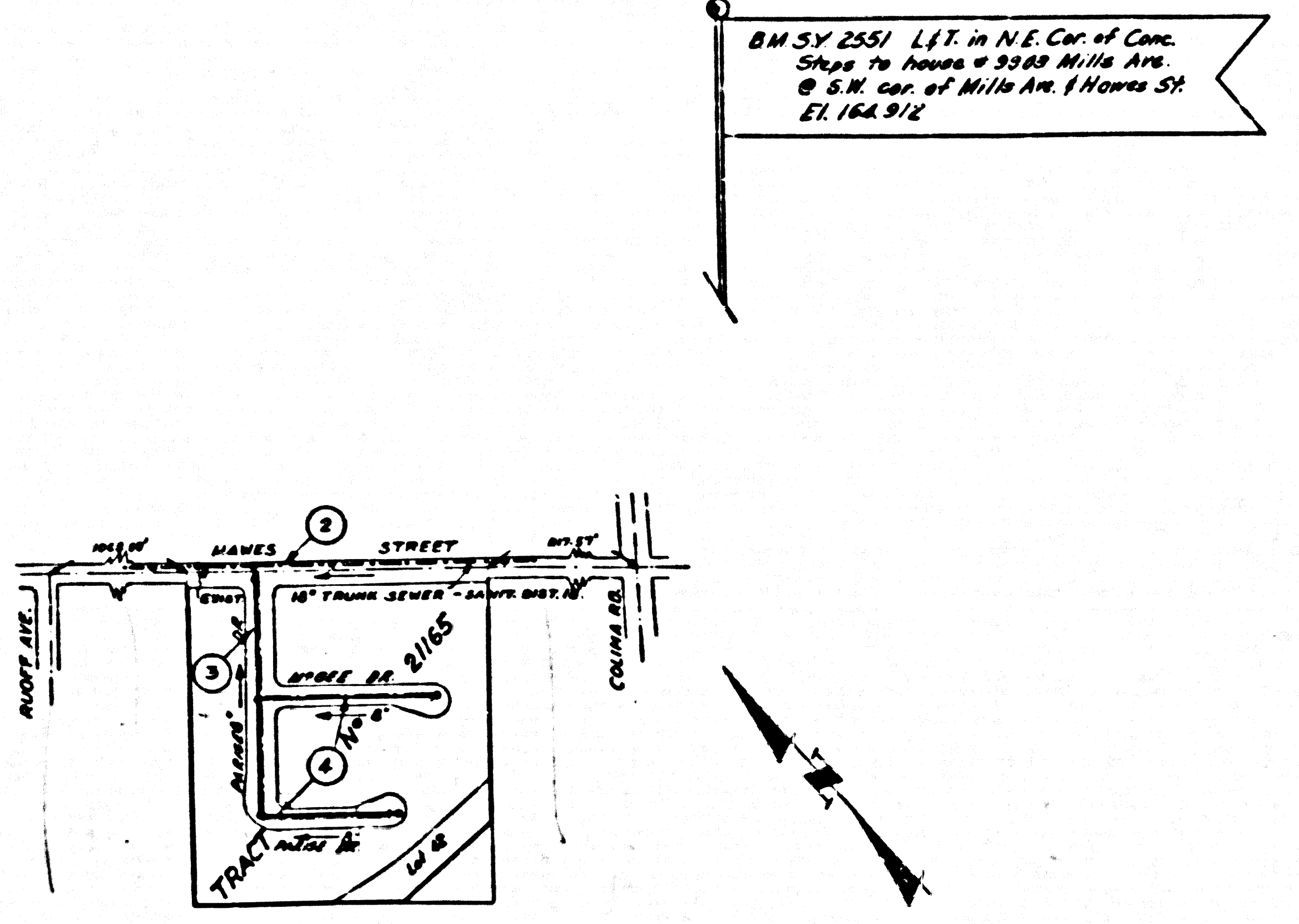
23948

PRIVATE CONTRACT NO. 3944  
W. S. 34  
2 SHEETS, 4 PAGES  
Scale: VERT. 1"=4'  
HORIZ. 1"=40'  
JAN. 1956  
PREPARED IN THE OFFICES OF  
KEMMERER ENGINEERING CO. INC.

By Hans C. Thomson Reg. C. E. No. 8244  
FOR LEGEND SEE PLAN NO. S-a-64

NOTE:  
Grades to which this improvement is to be constructed are shown on plans and profiles. Grade points for top of curbs, center line of streets, or center line of alleys are shown by circles on profiles. At all points between designated points the grade shall be established so as to conform to a straight line drawn between said designated points.  
Elevations are in feet above U.S.C. & G.S. See Level Datum of 1928.  
This drawing and the data hereon are hereby made a part of the specifications.  
Work shall be constructed according to specifications on file in the office of the County Engineer and shall be prosecuted only in the presence of the County Engineer.  
Before work can be started, the contractor must obtain a permit to excavate in County streets from the L.A. County Road Dept., 108 W. 2nd St. and make a deposit with the County Engineer, Room 324, 255 South Broadway, sufficient to cover the cost of construction inspection and record plans.  
Approval of this plan by the County of Los Angeles does not constitute a representation as to the accuracy of the location of or the existence or non-existence of any underground utility, pipe, or structure within the limits of this project. This note applies to all sheets.  
If work is to be done in a State Highway, a permit must be obtained from the State of California, Division of Highways, 120 South Spring Street.

COUNTY OF LOS ANGELES, CALIFORNIA  
Approved, John A. Lambie, County Engineer  
Checked By A.P. O'Neil Sanitation Engineer  
Approved, A. M. Rawns  
Checked By J. P. ... Office Engineer



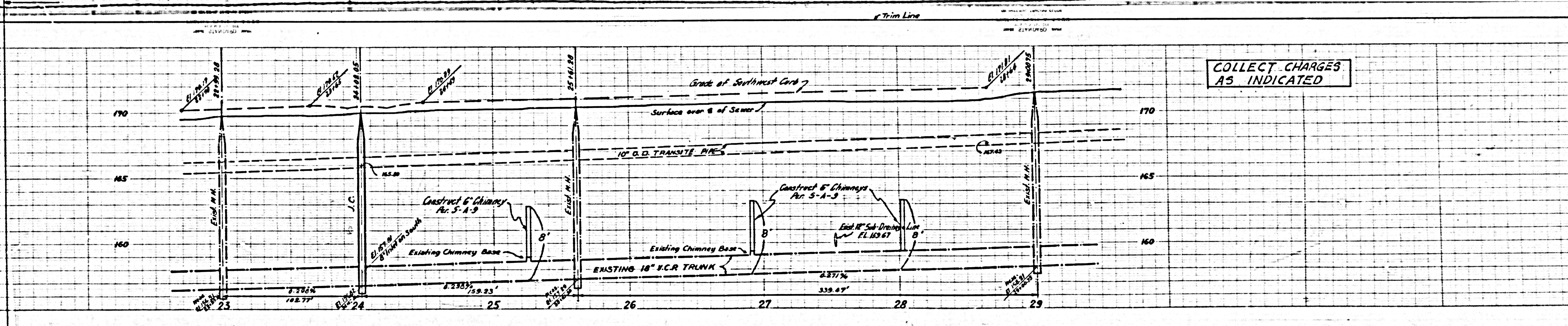
INDEX MAP  
TRACT N° 21165  
PC. 3944  
SCALE: 1"=300'

SHEET NO.	PAGES
1	1-4

COLLECT CHARGES  
AS INDICATED

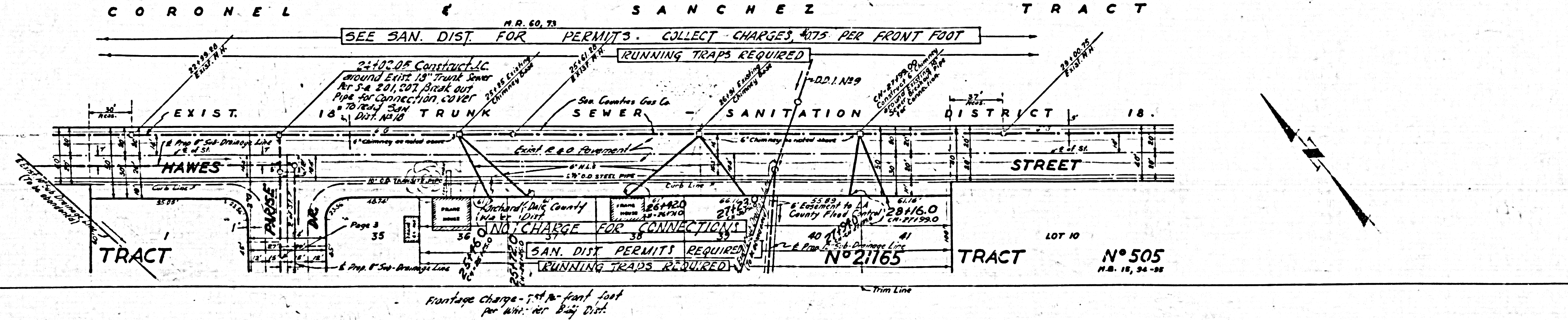
Before breaking into any existing structure and before final acceptance of this work, County Sanitation District should be notified in order that required inspection may be made.

checked 1-11-57 W. L. ...



COLLECT CHARGES  
AS INDICATED

23949



SEE SAN. DIST. FOR PERMITS. COLLECT CHARGES \$175 PER FRONT FOOT

2-10" Construct 10' around EXIST. 18" Trunk Sewer at S-A 201,507 Break out Pipe for connection cover to 18" Trunk Sewer DIST. NO. 18

EXIST. 18" S.C.R. TRUNK

San. Counties Gas Co. SEWER

SANITATION

EXIST. R.O. PAVEMENT

NO CHARGE FOR CONNECTION

SAN. DIST. PERMITS REQUIRED

RUNNING TRAPS REQUIRED

FRONTAGE CHARGE - 1st 10' front foot per width for City Dist.

TRACT N° 21165  
LOT 10  
N° 505  
H.S. 18, 34-35

TRACT N° 21165  
PC. 3944

