

DOWNEY BLDG. DIST. NO. 4.1

PROFILE ALIGNMENT AND GRADE OF P.C. 3945  
 SANITARY SEWERS PAGE 1

TO BE CONSTRUCTED FOR  
 DOWNEY DISTRIBUTION BASE  
 (SOU. CALIF. GAS CO.)

22,921

PRIVATE CONTRACT NO. 3945

W.S. 33

1 SHEET, 2 PAGES

(2)

SCALE: 1" = 10' HORIZ. 1" = 4' VERT.

MAY, 1956

PREPARED IN THE OFFICES OF  
 AUSTIN FIELD & FRY

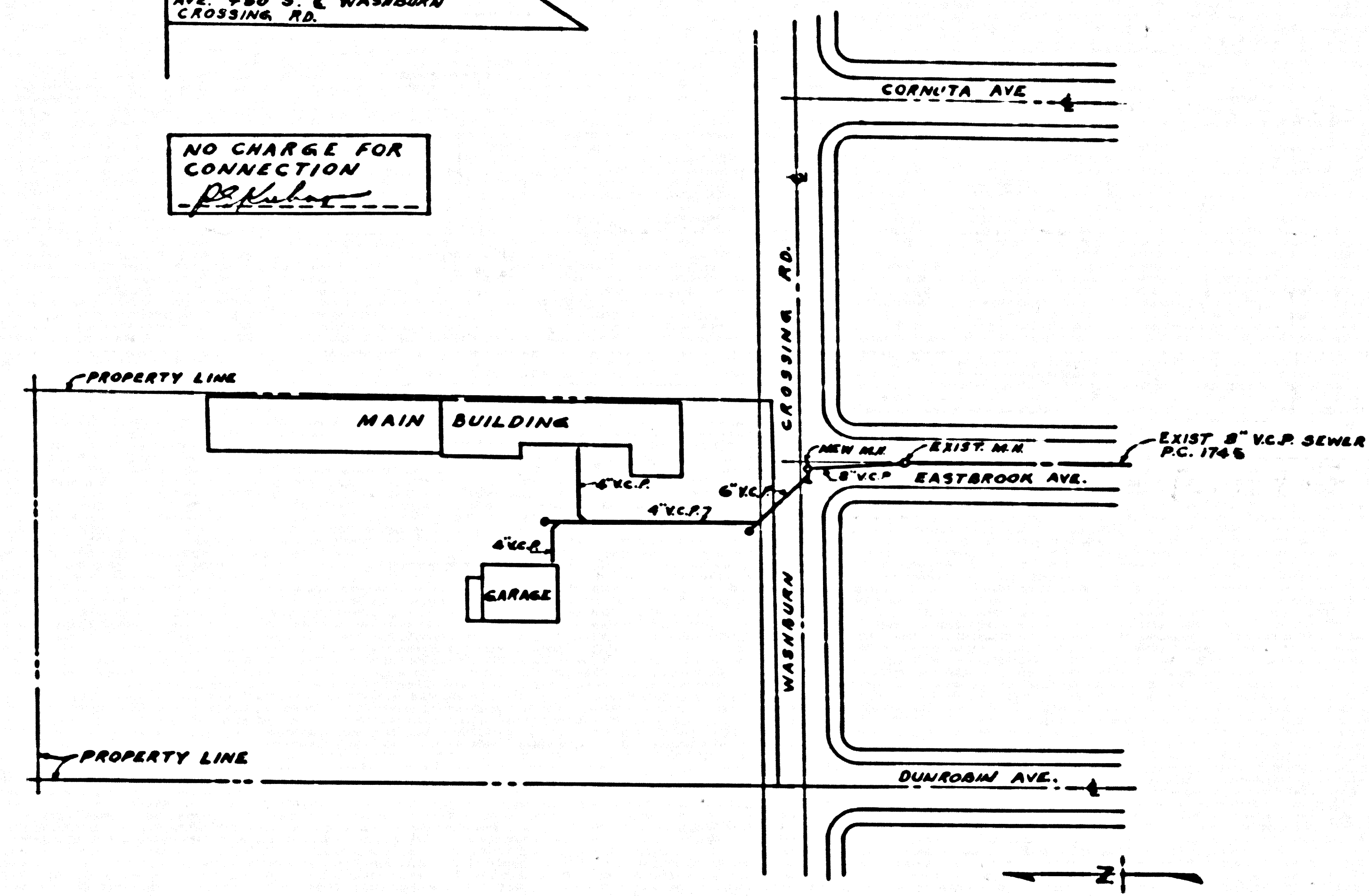
BY: *J. J. Judd*  
 REG. C. E. NO. 1538

FOR LEGEND SEE PLAN NO. S.A-64

- NOTES:
- PROVIDE STAKES ON THE PROPERTY LINE OR PROPERTY LINES PRODUCED AT RIGHT ANGLES TO THE SEWER LINE AT THE CENTER LINE OF EACH MANHOLE.
  - NO REPRESENTATIVE OF THE COUNTY ENGINEER WILL SURVEY OR LAYOUT ANY PORTION OF THE WORK.
  - THE OWNER OR HIS AUTHORIZED REPRESENTATIVE SHALL FURNISH THE COUNTY ENGINEER WITH GRADE SHEETS AND STATION FOR ALL HOUSE LATERALS AND Y BRANCHES AND SHALL PROVIDE STAKES FOR THESE AT THEIR PROPER LOCATIONS WITH STATIONING PLAINLY MARKED. ANY CHANGE IN LOCATION SHALL BE REQUESTED IN WRITING BY THE OWNER OR HIS REPRESENTATIVE.
  - NO REVISIONS SHALL BE MADE IN THESE PLANS WITHOUT THE APPROVAL OF THE COUNTY ENGINEER.
  - USE STANDARD MANHOLE FRAMES AND COVERS, S.A-117, EXCEPT AS NOTED.
  - USE STANDARD SIZES FOR EXCEPT AS NOTED.
  - USE CEMENT MORTAR FOR ALL VITRIFIED CLAY PIPE JOINTS.
  - RESURFACE ALL PAVED AREAS WITHIN PAVED AREA TO MEET L. A. COUNTY ROAD DEPT. OR CALIF. STATE HIGHWAY DEPT. REQUIREMENTS IN ACCORDANCE WITH PERMITS.
  - INCREASE FOUR FEET OF SEWER AT POINTS OF INTERFERENCE WITH POLES, S.A-119.
  - ALL STRUCTURES SHALL BE BRICK SEWER STRUCTURES, S.A-184, EXCEPT AS NOTED.
  - FOR ALLOWABLE LEAKAGE TEST USE FORMULA NO. 1, SPEC. 8, SEC. 8.

Δ.M. - ELEV. 100.018 18, 69-37  
 2 FT. 10" W. CURB OF EASTBROOK  
 AVE. +66' 3" & WASHINGTON  
 CROSSING RD.

NO CHARGE FOR CONNECTION



INDEX MAP  
 SCALE: 1"=100'  
 P.C. 3945

GRADES TO WHICH THIS IMPROVEMENT IS TO BE CONSTRUCTED ARE SHOWN ON PLANS AND PROFILES. GRADE POINTS FOR TOP OF CURBS, CENTER LINE OF STREETS, OR CENTER LINE OF ALLEYS ARE SHOWN BY CIRCLES ON PROFILES. AT ALL POINTS BETWEEN DESIGNATED POINTS THE GRADE SHALL BE ESTABLISHED SO AS TO CONFORM TO A STRAIGHT LINE BETWEEN SAID DESIGNATED POINTS.

DEFINITIONS ARE AS FOLLOWS: M.S.L. MEANS MEAN SEA LEVEL. DATUM OF 1929 MEANS DATUM OF 1929.

THIS DRAWING AND THE DATA HEREON ARE HEREBY MADE A PART OF THE SPECIFICATIONS FOR THE CONSTRUCTION OF THE WORK.

WORK SHALL BE CONSTRUCTED ACCORDING TO SPECIFICATIONS ON FILE IN THE OFFICE OF THE COUNTY ENGINEER AND SHALL BE PROSECUTED ONLY IN THE PRESENCE OF THE COUNTY ENGINEER.

BEFORE WORK CAN BE STARTED, THE CONTRACTOR MUST OBTAIN A PERMIT TO EXCAVATE IN COUNTY STREETS FROM THE L. A. COUNTY ROAD DEPT., 128 W. 3RD ST. AND MAKE A DEPOSIT WITH THE COUNTY ENGINEER, ROOM 224 PAN AMERICAN BLDG., 232 SO. BROADWAY SUFFICIENT TO COVER THE COST OF CONSTRUCTION INSPECTION AND RECORD PLANS.

APPROVAL OF THIS PLAN BY THE COUNTY OF LOS ANGELES DOES NOT CONSTITUTE A REPRESENTATION AS TO THE ACCURACY OF THE LOCATION OF OR THE EXISTENCE OR NON-EXISTENCE OF ANY UNDERGROUND UTILITY PIPE, OR STRUCTURE WITHIN THE LIMITS OF THIS PROJECT. THE NOTE APPLIES TO ALL PAGES.

IF WORK IS TO BE DONE IN A STATE HIGHWAY, A PERMIT MUST BE OBTAINED FROM THE STATE OF CALIFORNIA, DIVISION OF HIGHWAYS, 128 SOUTH SPRING STREET.

COUNTY OF LOS ANGELES, CALIFORNIA

APPROVED, JOHN A. LAMBE, COUNTY ENGINEER

APPROVED, A. M. RAWN, CHIEF ENGINEER  
 SAN. DIST. NO. 2

BY: *A. P. Collins* SANITATION ENGINEER

BY: *G. P. Thomas* OFFICE ENGINEER

CHECKED BY: *P. K. Fisher* 5-9-56

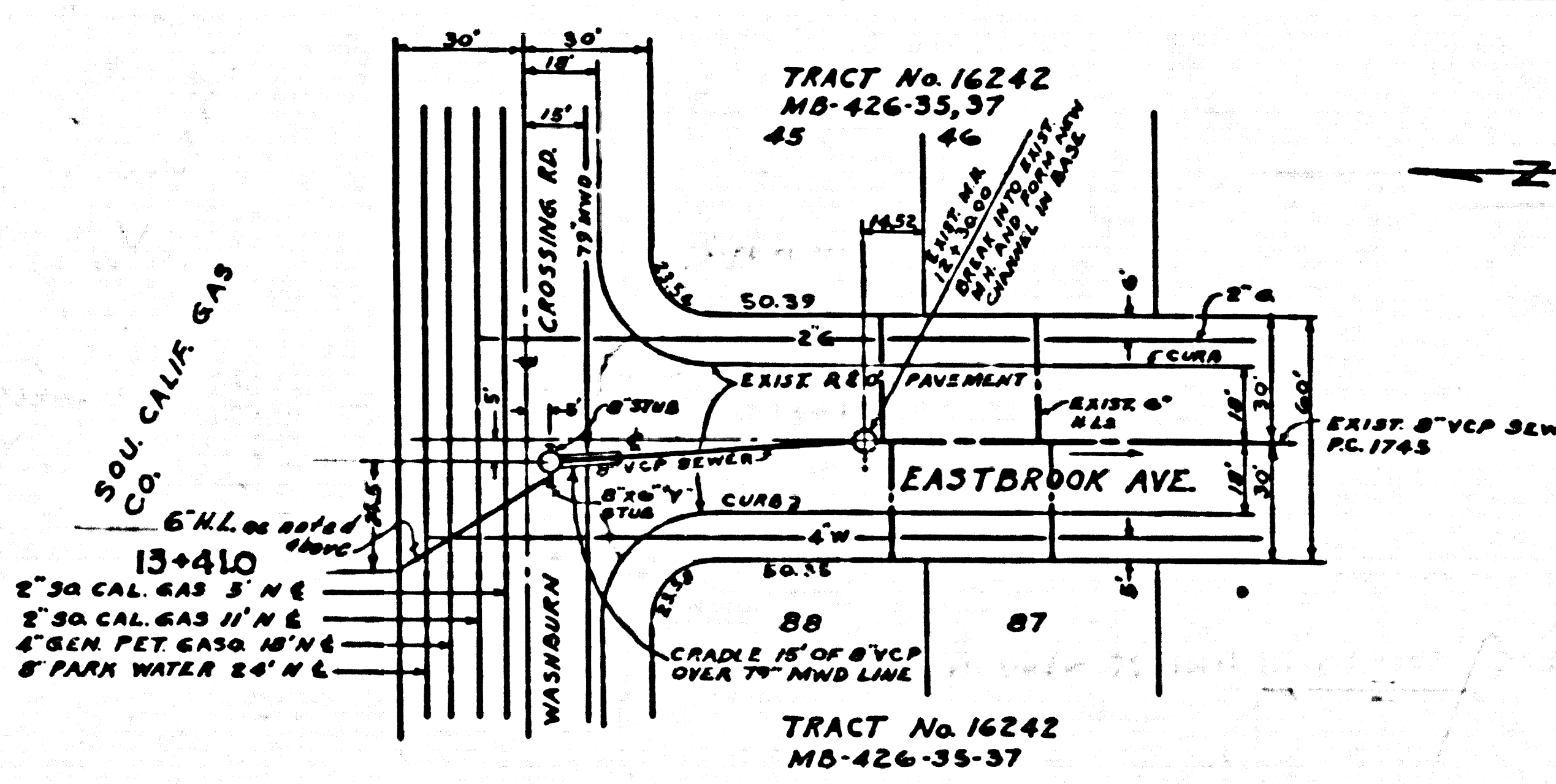
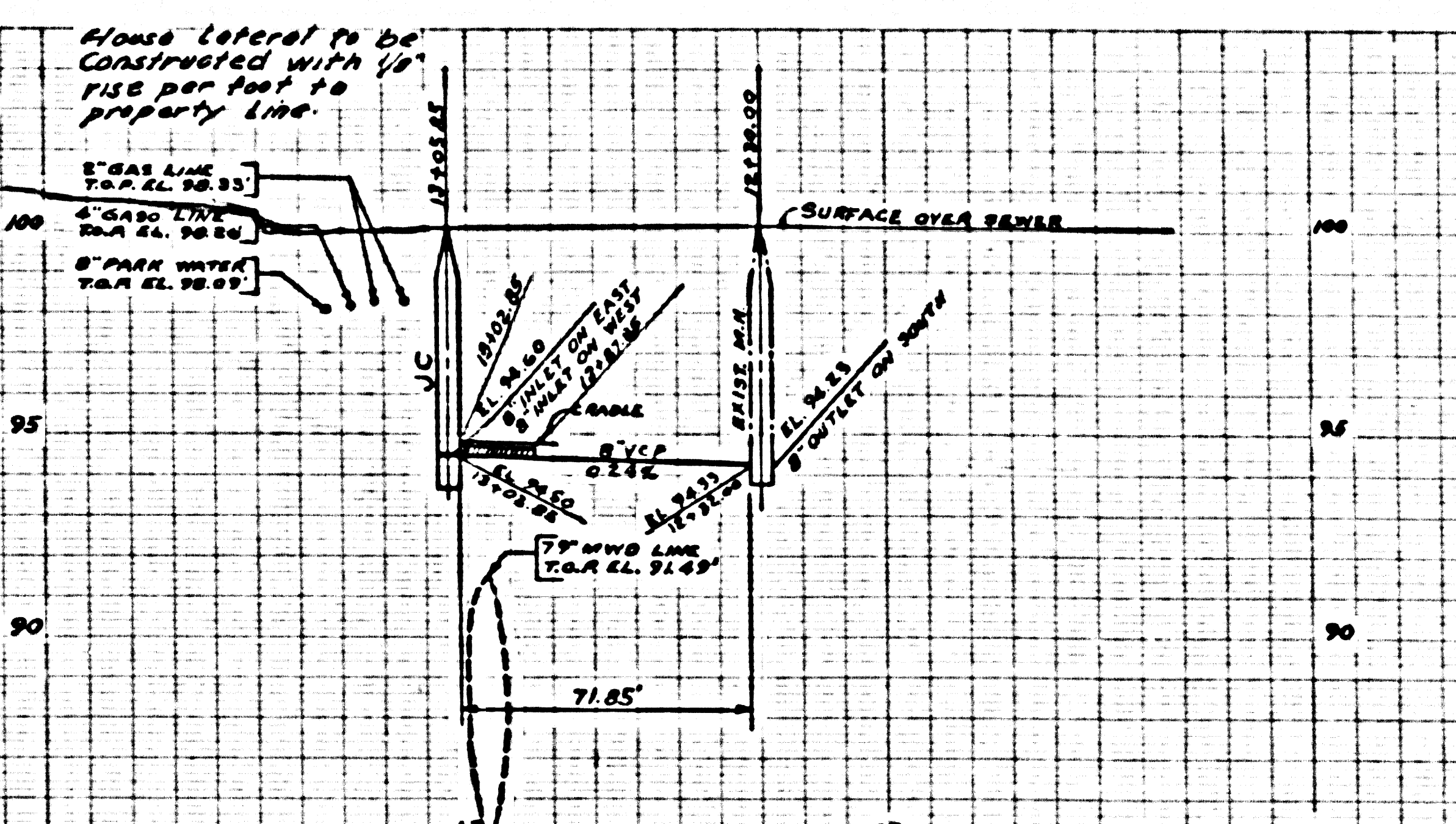
OFFICE OF COUNTY ENGINEER, 228 C. E. NO. 7860

Checked 6-20-56 *W. H. Wren*

P.C. 3945 PAGE 2

NO CHARGE FOR CONNECTION

22,922



SOU. CALIF. GAS

13+410

2" 30 CAL. GAS 5' N E  
 2" 30 CAL. GAS 11' N E  
 4" GEN. PET. GAS 18' N E  
 8" PARK WATER 24' N E

TRACT No. 16242  
 MB-426-35, 37

TRACT No. 16242  
 MB-426-35-37

P.C. 3945

P.C. 3945

228