

EAST LOS ANGELES BLDG. DIST. NO. 6

PROFILE ALIGNMENT AND GRADE OF
SANITARY SEWERS P.C. 395L
 TO BE RECONSTRUCTED IN PAGE 1
GASPAR AVE. (23533)
 (2)

PRIVATE CONTRACT NO. 3951
 W.S. 36

1 SHEETS, 2 PAGES
 SCALE: 1" = 10' HORIZ. 1" = 4' VERT. MAY 3, 1956

PREPARED BY THE OFFICE OF
RICHFIELD OIL CORPORATION
 CONSTRUCTION & MAINTENANCE ENGR.
 BY *Gaydon K. Beckmann* REG. C. E. NO. 7112
 5/4/56
 FOR LEGEND SEE PLAN NO. S-A-64

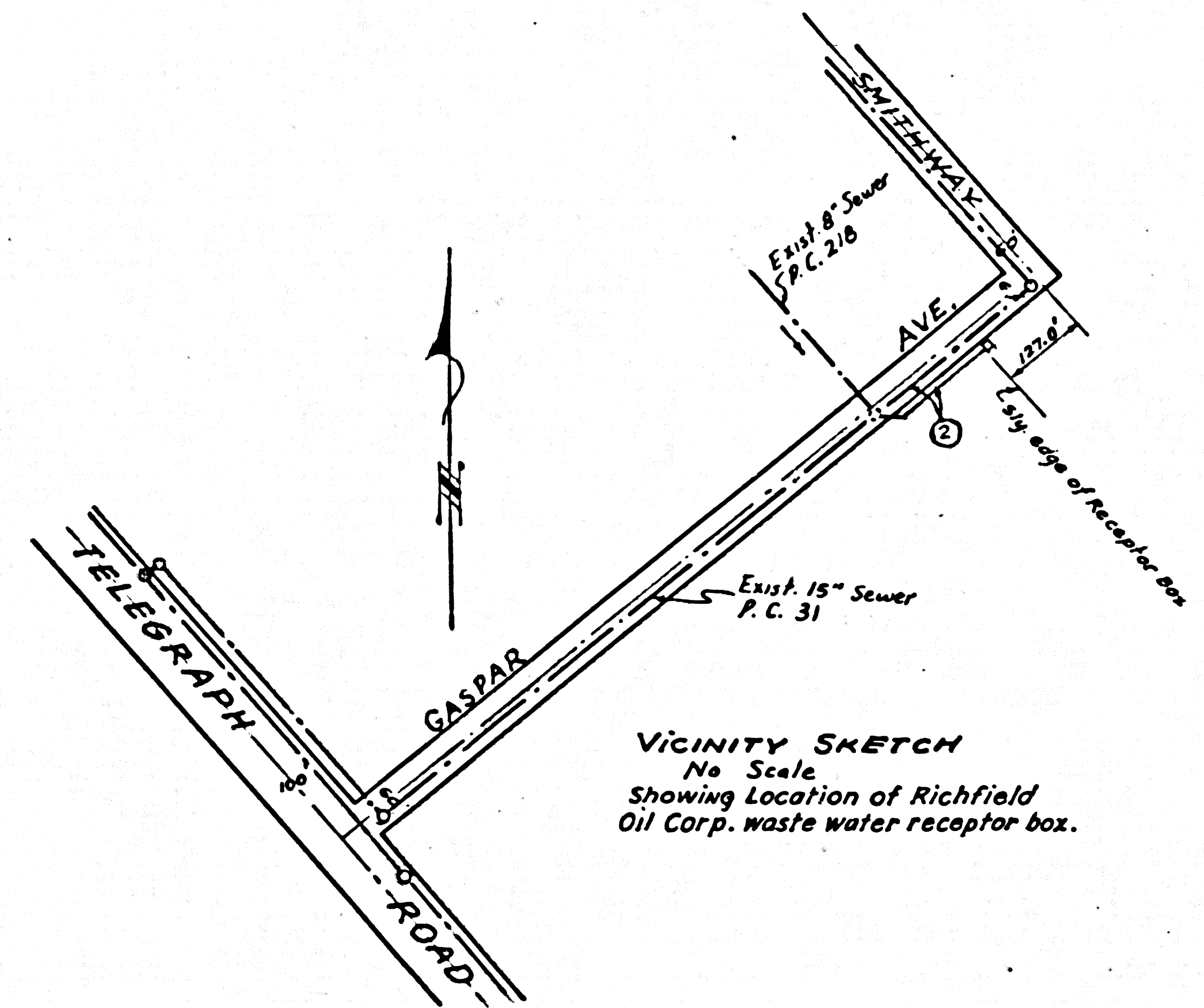
BENCH MARK ELEV. = 159.60
 Spike on East side of power pole #659050 S.E. corner of Gaspar Ave. & Smithway.

- NOTES
- PROVIDE STAKES ON THE PROPERTY LINE OR PROPERTY LINES PRODUCED AT RIGHT ANGLES TO THE SEWER LINE AT THE CENTER LINE OF EACH MANHOLE.
 - NO REPRESENTATIVE OF THE COUNTY ENGINEER WILL SURVEY OR LAYOUT ANY PORTION OF THE WORK.
 - THE OWNER OR HIS APPROVED REPRESENTATIVE SHALL FURNISH THE COUNTY ENGINEER WITH GRADY SHEETS AND STATION FOR ALL HOUSE LATERALS AND Y BRANCHES AND SHALL PROVIDE STAKES FOR THEM AT THEIR PROPER LOCATIONS WITH STATIONING AND PLAINLY MARKED. ANY CHANGE IN LOCATION SHALL BE REQUESTED IN WRITING BY THE OWNER OR HIS REPRESENTATIVE.
 - NO REVISIONS SHALL BE MADE IN THESE PLANS WITHOUT THE APPROVAL OF THE COUNTY ENGINEER.
 - USE STANDARD MANHOLE FRAMES AND COVERS, S.A. 117, EXCEPT AS NOTED.
 - USE STANDARD STRENGTH PIPE EXCEPT AS NOTED.
 - USE CEMENT MORTAR FOR ALL VITRIFIED CLAY PIPE JOINTS.
 - RESURFACE ALL TRENCH WITHIN PAVED AREA TO MEET L.A. COUNTY ROAD DEPT. OR CALIF. STATE HIGHWAY DEPT. REQUIREMENTS IN ACCORDANCE WITH PERMITS.
 - INCREASE FOUR FEET OF SEWER AT POINTS OF INTERFERENCE WITH POLES, S.A. 119.
 - UNLESS OTHERWISE SHOWN OTHERWISE, ALL SEWER LINES SHALL BE 15" VITRIFIED CLAY PIPE.
 - ALL STRUCTURES SHALL BE BRICK OR CONCRETE STRUCTURES, S.A. 114, EXCEPT AS NOTED.
 - FOR J.J. WARD'S SEWAGE TEST USE FORMULA NO. 1, SPEC. SEC. II.
 - MANHOLE TOPS IN UNPAVED RIGHTS-OF-WAY TO BE 6" ABOVE FINISHED GRADE.

NOTE - All necessary permits to be obtained by Contractor.

NO CHARGE FOR CONNECTIONS
P. Beckmann S-24-56

APPROVED BY THE INDUSTRIAL WASTE DIVISION,
 DEPARTMENT OF THE LOS ANGELES COUNTY ENGINEER.
 JOHN A. LAMBIE County Engineer
 BY *Wayne Clark* DATE: 5/24/56



NOTES

GRADES TO WHICH THIS IMPROVEMENT IS TO BE CONSTRUCTED ARE SHOWN ON PLANS AND PROFILES. GRADE POINTS FOR TOP OF CURBS, CENTER LINE OF STREETS, OR CENTER LINE OF ALLEYS ARE SHOWN BY CIRCLES ON PROFILES. AT ALL POINTS WITHIN DESIGNATED POINTS THE GRADE SHALL BE ESTABLISHED SO AS TO CONFORM TO A STRAIGHT LINE DRAWN BETWEEN SAID DESIGNATED POINTS.

ELEVATIONS ARE IN FEET ABOVE U.S.C. & G.S. SEA LEVEL, BASED ON 1929.

THE DRAWING AND THE DATA HEREON ARE HEREBY MADE A PART OF THE SPECIFICATIONS.

WORK SHALL BE CONSTRUCTED ACCORDING TO SPECIFICATIONS ON FILE IN THE OFFICE OF THE COUNTY ENGINEER AND SHALL BE PROSECUTED ONLY IN THE PRESENCE OF THE COUNTY ENGINEER.

BEFORE WORK CAN BE STARTED, THE CONTRACTOR MUST OBTAIN A PERMIT TO EXCAVATE IN COUNTY STREETS FROM THE COUNTY ROAD DEPT. FOR 100' W. 3RD ST. AND MAKE A REPORT WITH THE COUNTY ENGINEER, ROOM 324 PAM AMERICAN BUILDING, 228 SO. BROADWAY, BUREAU OF PUBLIC WORKS TO COVER THE COST OF CONSTRUCTION INSPECTION AND RECORD PLANS.

APPROVAL OF THIS PLAN BY THE COUNTY OF LOS ANGELES DOES NOT CONSTITUTE A REPRESENTATION AS TO THE ACCURACY OF THE LOCATION OF OR THE EXISTENCE OR NON-EXISTENCE OF ANY UNDERGROUND UTILITY PIPE, OR STRUCTURE WITHIN THE LIMITS OF THIS PROJECT. THIS NOTE APPLIES TO ALL PAGES.

IF WORK IS TO BE DONE ON A STATE HIGHWAY, A PERMIT MUST BE OBTAINED FROM THE STATE OF CALIFORNIA, DIVISION OF HIGHWAYS, 120 SOUTH SPRING STREET.

COUNTY OF LOS ANGELES, CALIFORNIA

APPROVED, JOHN A. LAMBIE, COUNTY ENGINEER
 CO SAN DIST. NO. 2

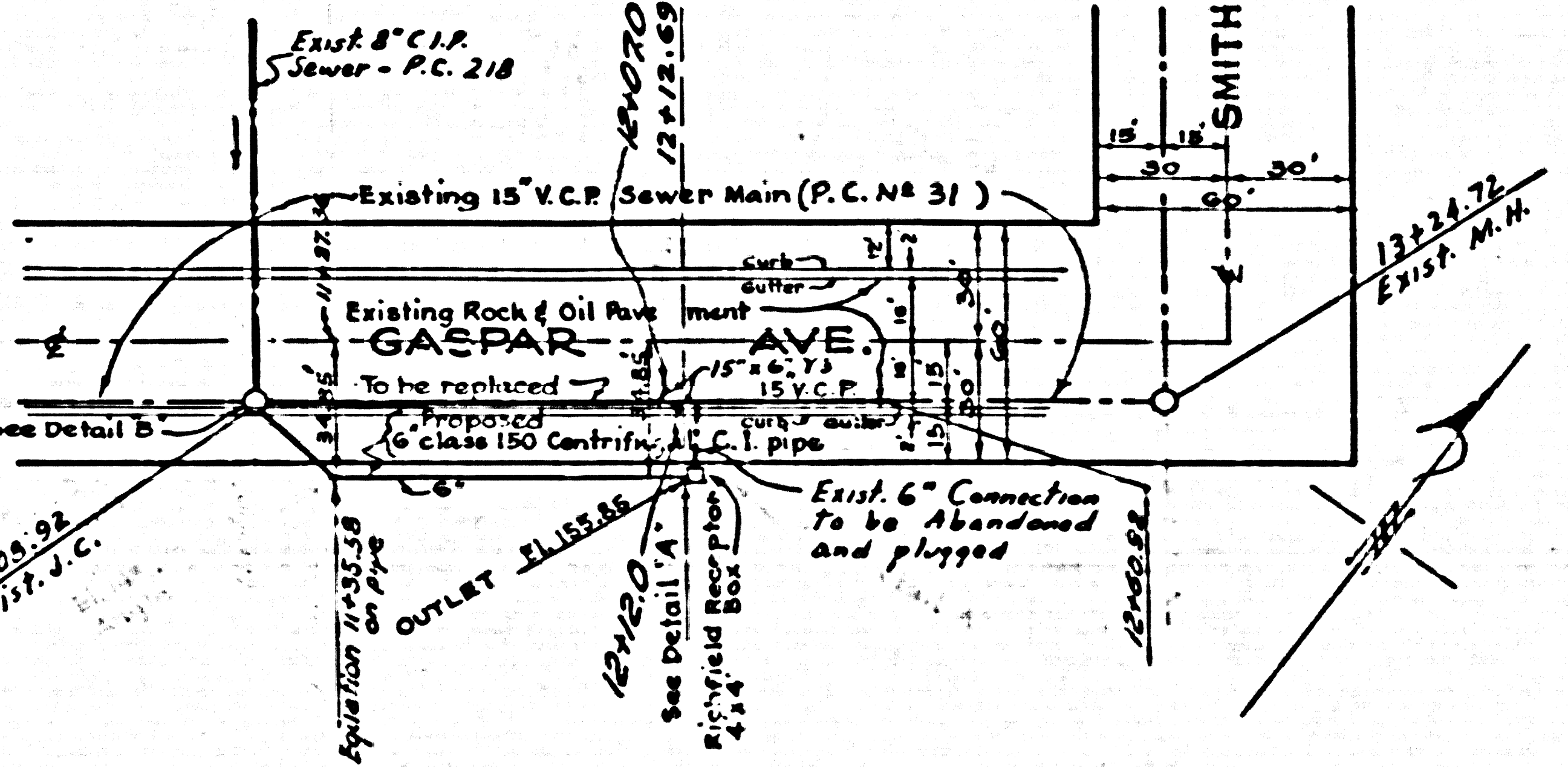
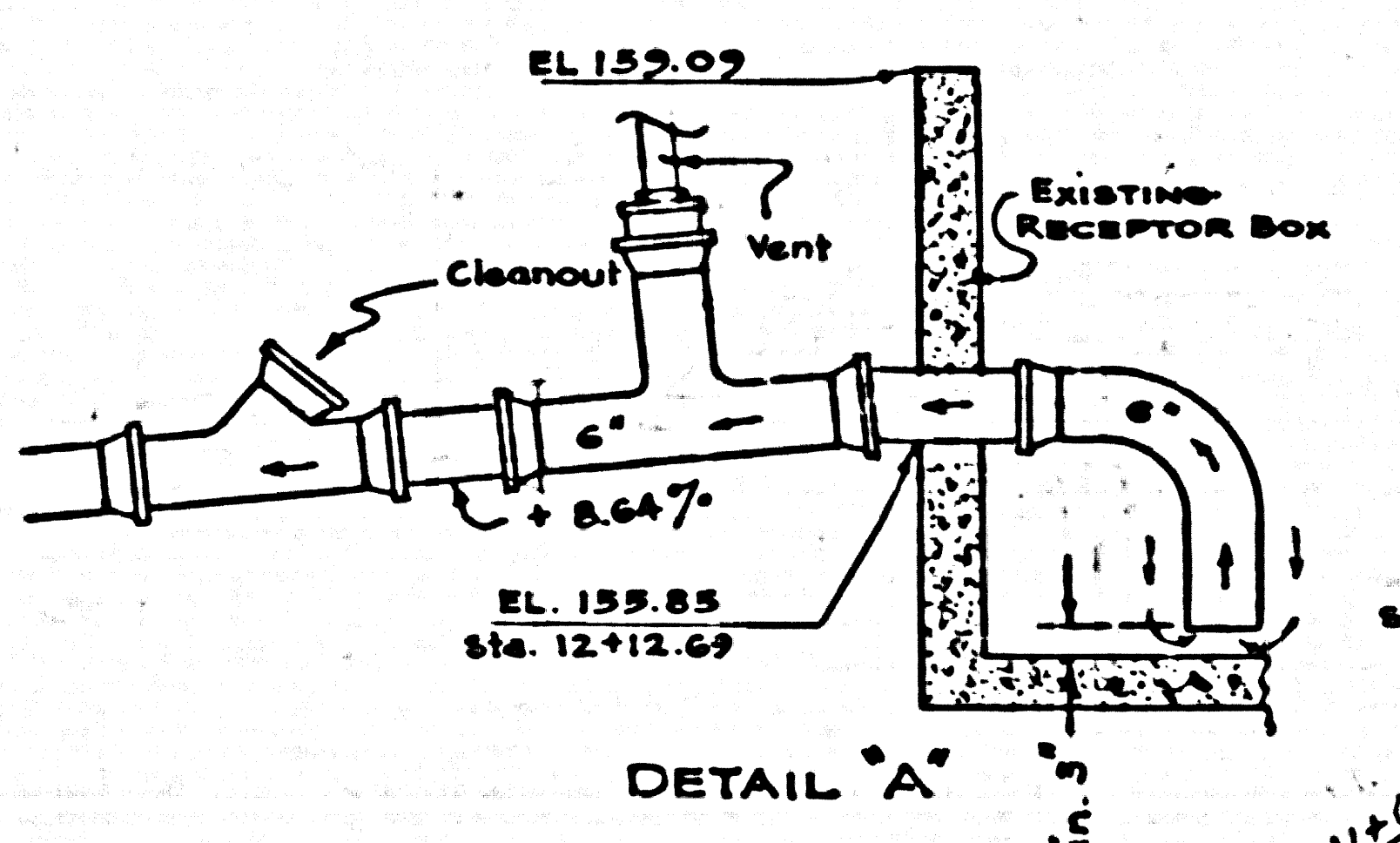
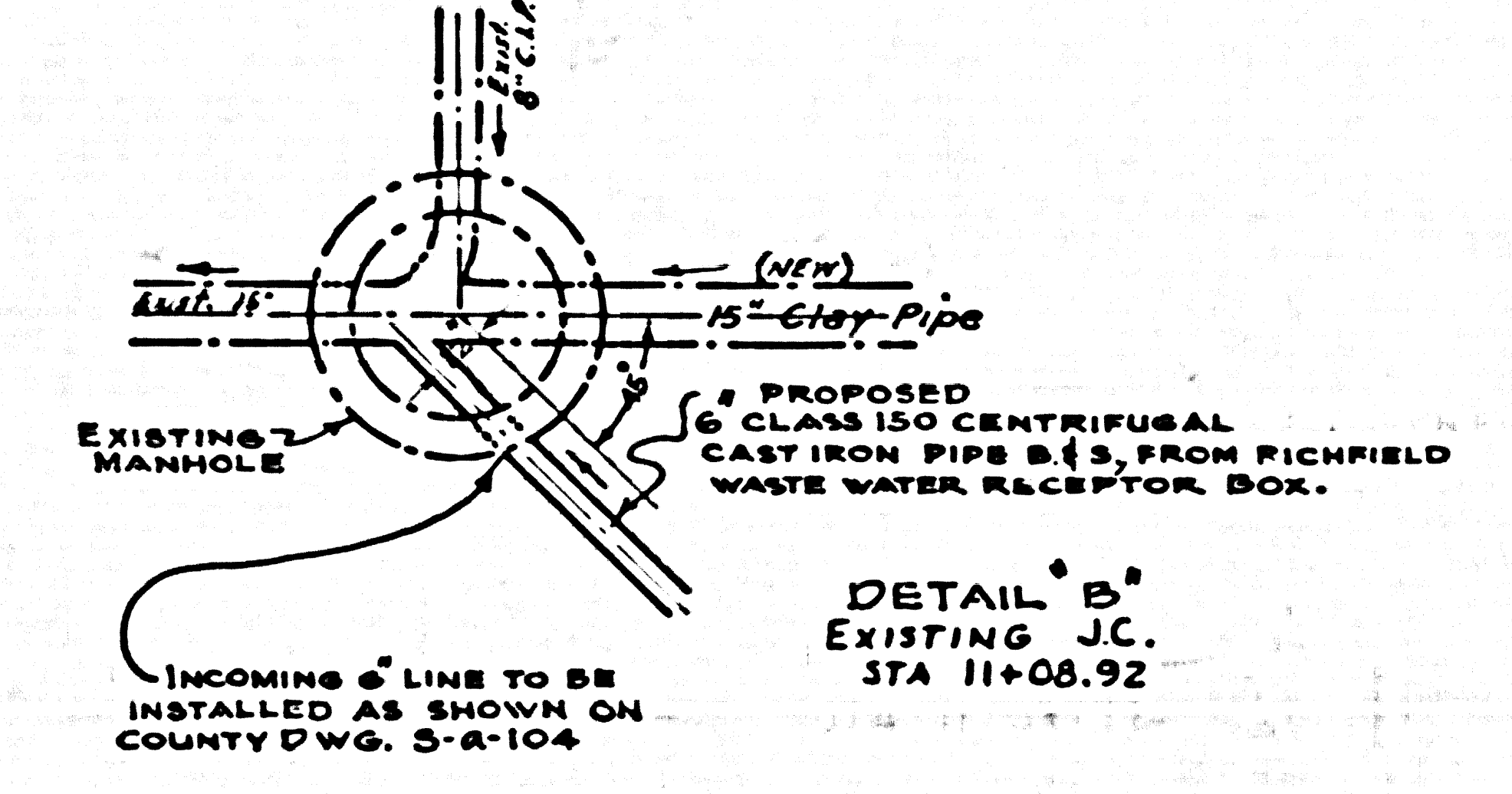
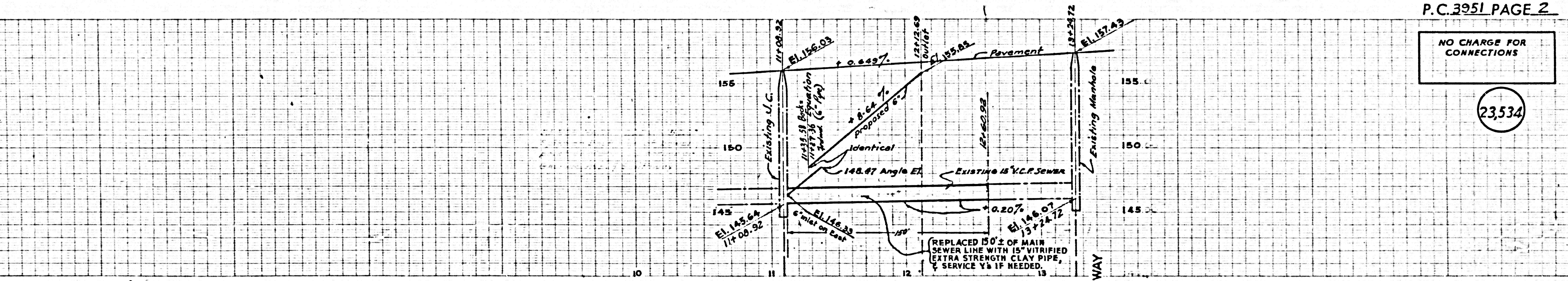
BY *J. P. Beckmann* SANITATION ENGINEER
 CHECKED BY *P. Beckmann S-24-56*
 OFFICE OF COUNTY ENGINEER, REG. C. E. NO. 7360

Checked 10-15-56 *W. Starn*

P.C. 395L PAGE 2

NO CHARGE FOR CONNECTIONS

(23534)



P.B.