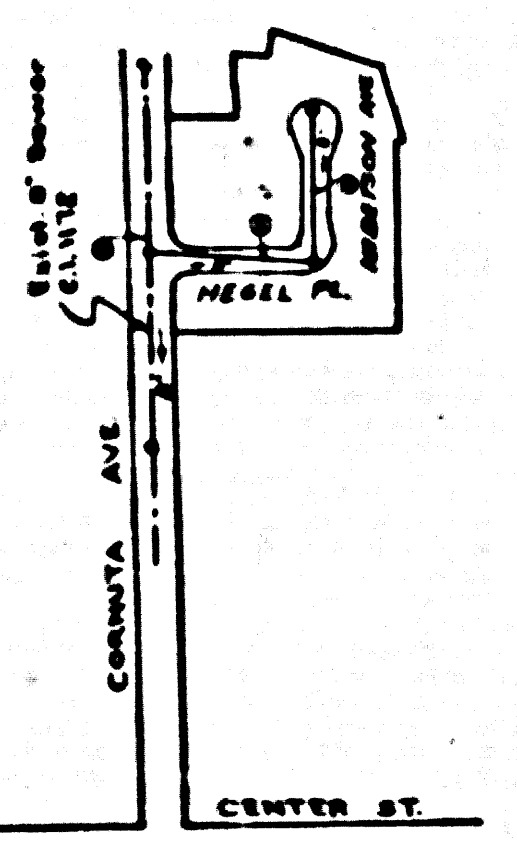


BELLFLOWER BLDG. DIST. N^o 4

- NOTE:**
 Provide stakes on the property lines or property lines produced at right angles to the sewer line at the center line of each manhole.
 No representative of the County Engineer will survey or layout any portion of the work. The owner or his authorized representative shall furnish the County Engineer with grade sheets and stations for all house laterals and Y branches and shall provide stakes for them at their proper locations with stationing plainly marked. Any change in location shall be requested in writing by the owner or his representative.
 No revisions shall be made in these plans without the approval of the County Engineer.
1. Use standard manhole frames and covers, S-o-117.
 2. Use standard strength pipe except as noted.
 3. Use cement mortar for all vitrified clay pipe joints.
 4. Resurface all trench within paved area to meet L.A. County Road Dept. or Calif. State Highway Dept. requirements in accordance with permit.
 5. Encase four feet of sewer at points of interference with poles, S-o-119.
 6. House laterals to be constructed with inverts at property line...5 feet below curb grade except as noted.
 7. All structures shall be brick sewer structures, S-o-104.
 8. Manhole tops in unimproved Rights-of-Way to be 4" above finish grade.
 9. For allowable leakage test, see Formula No. 1000, Spec's., Sec. 54.
 10. Private Engineer to furnish house lateral depth of property line below top of curb grade elevation or elevation of 4' of street for each house lateral on the grade sheet.

B.M. Rd Dept 57961 Elev 71.005
 L & T near S. edge conc drive 185 W of
 E Woodruff Ave. Driveway to house # 15509

SHEET	PAGE
1	1-2



INDEX MAP
 TRACT N^o 17126
 SHEET 1-400
 P.C. 3952

NO CHARGE FOR
 CONNECTIONS
 dated 4-18-56

checked 12-19-56 W. W. Green

PROFILE, ALIGNMENT AND GRADE OF
 SANITARY SEWERS
 TO BE CONSTRUCTED IN
TRACT N^o 17126
 PRIVATE CONTRACT NO. 3952
 W. S. 33
 SHEET 1 OF 1 SHEET
 Scale: VERT. 1"=4' HORIZ. 1"=40'
 PREPARED IN THE OFFICE OF
 VALLEY ENGINEERING CO.
 J. J. Francis, Inc. C. E. No. 3078
 FOR LEGEND SEE PLAN NO. S-o-64

P.C. 3952
 PAGE 1

23801
 (4)

NOTE:
 Grades to which this improvement is to be constructed are shown on plans and profiles. Grade points for top of curbs, center line of streets, or center line of alleys are shown by circles on profiles. At all points between designated points the grade shall be established so as to conform to a straight line drawn between said designated points.
 Elevations are in feet above U.S.C. & G.S. sea level datum of 1929.
 This drawing and the data hereon are hereby made a part of the specifications.
 Work shall be constructed according to specifications on file in the office of the County Engineer and shall be prosecuted only in the presence of the County Engineer.
 Before work can be started, the contractor must obtain a permit to excavate in County streets from the L.A. County Road Dept., 108 W. 2nd St. and make a deposit with the County Engineer, room 324, 283 So Broadway, sufficient to cover the cost of construction inspection and record plans.
 Approval of this plan by the County of Los Angeles does not constitute a representation as to the accuracy of the location or the existence or non-existence of any underground utility, pipe, or structure within the limits of this project. This note applies to all sheets.
 If work is to be done in a State Highway, a permit must be obtained from the State of California, Division of Highways, 120 South Spring Street.

COUNTY OF LOS ANGELES, CALIFORNIA
 Approved, John A. Lambie County Engineer
 Approved, A. M. Ravn
 J. P. Collins, Sanitation Engineer
 A. M. Ravn, Chief Clerk
 Dated by: P. K. Huber, 9-6-56
 Office of County Engineer, Box C. E. No. 7360

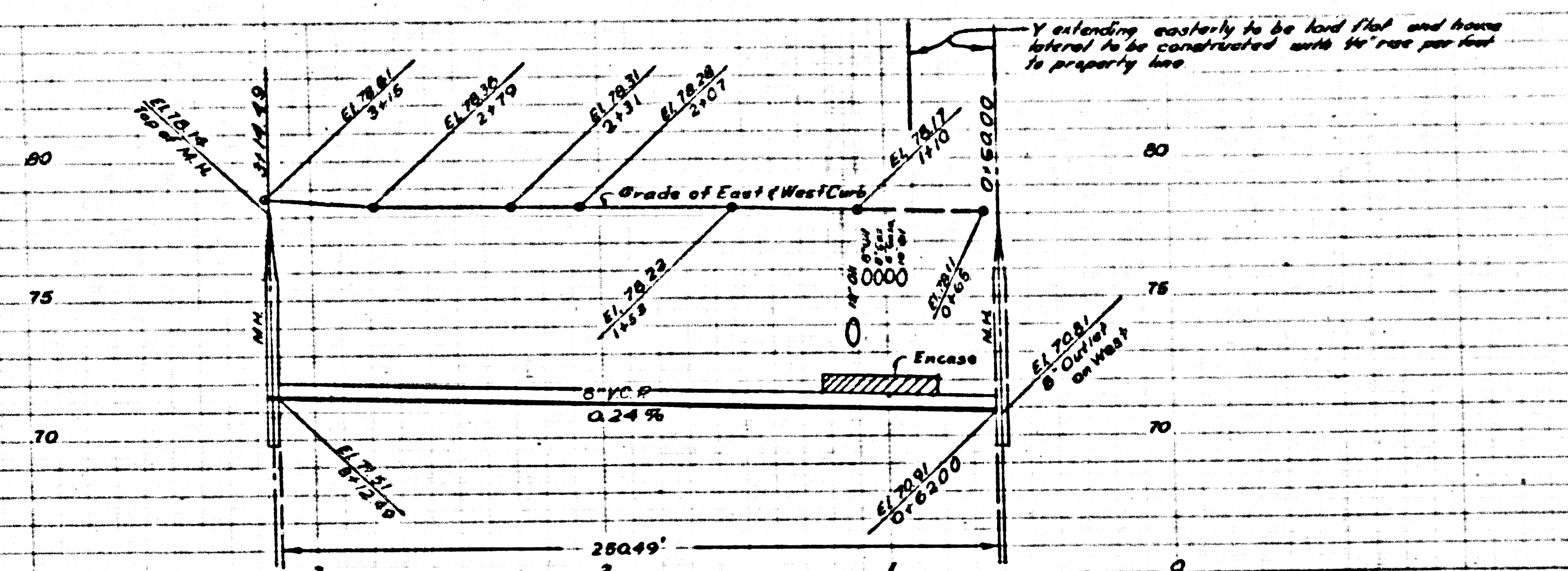
TRACT N^o 17126

P.C. 3952

52829

1874

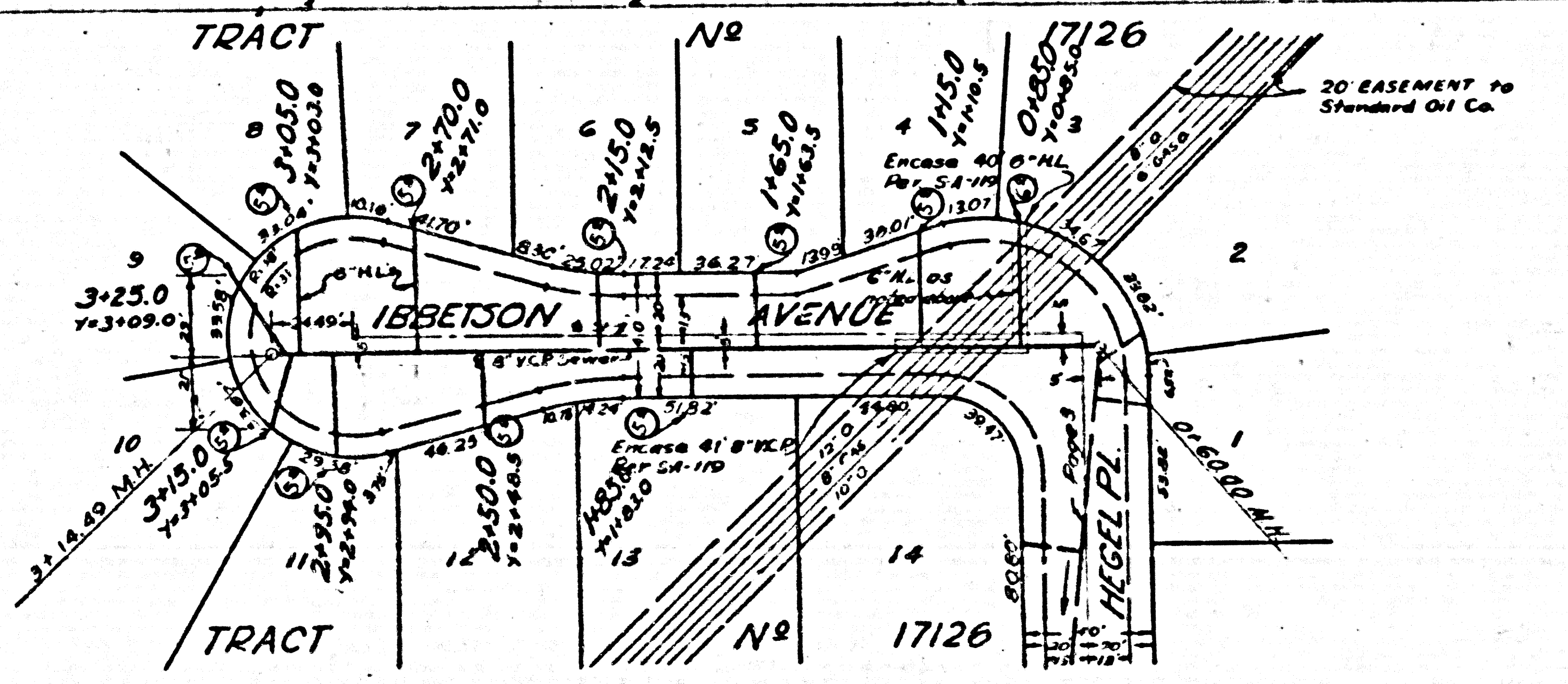
Trim Line



P.C. 3952
PAGE 2

23,802

NO CHARGE FOR
CONNECTIONS



Trim Line

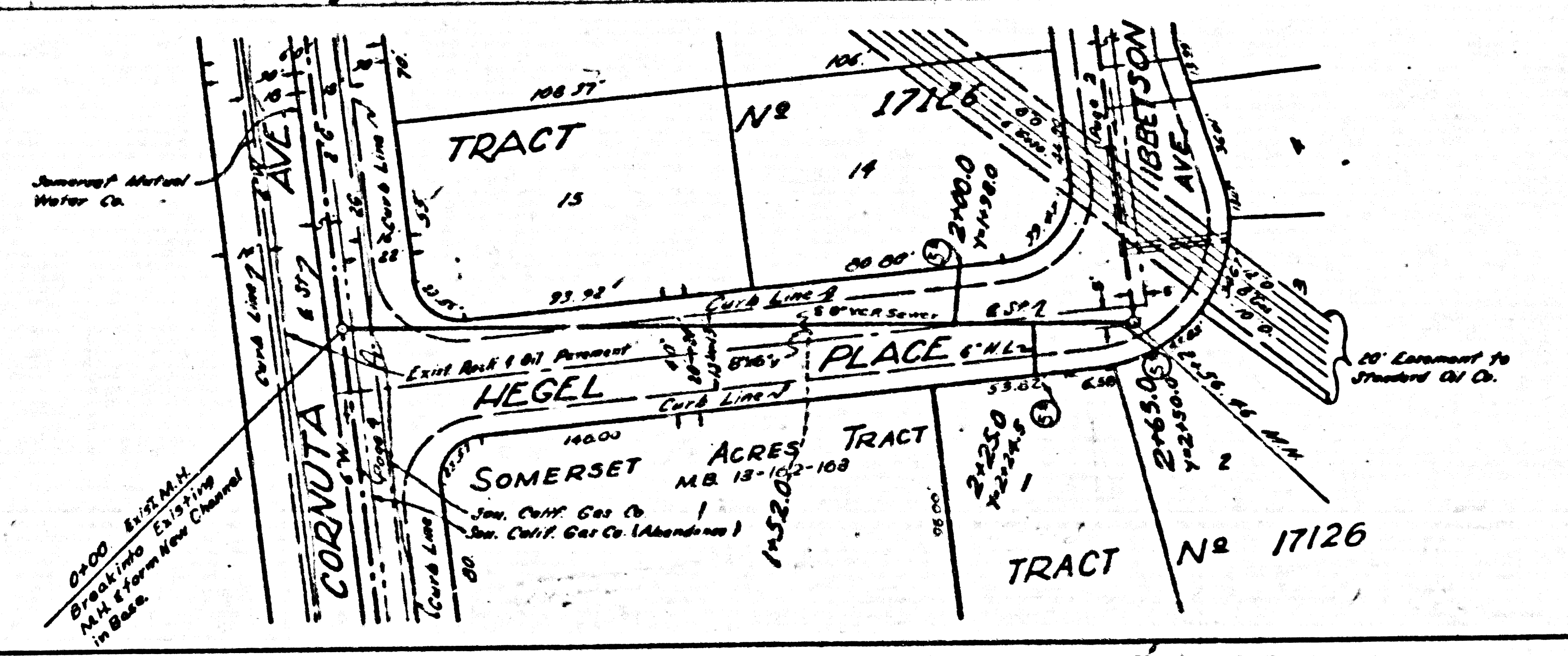
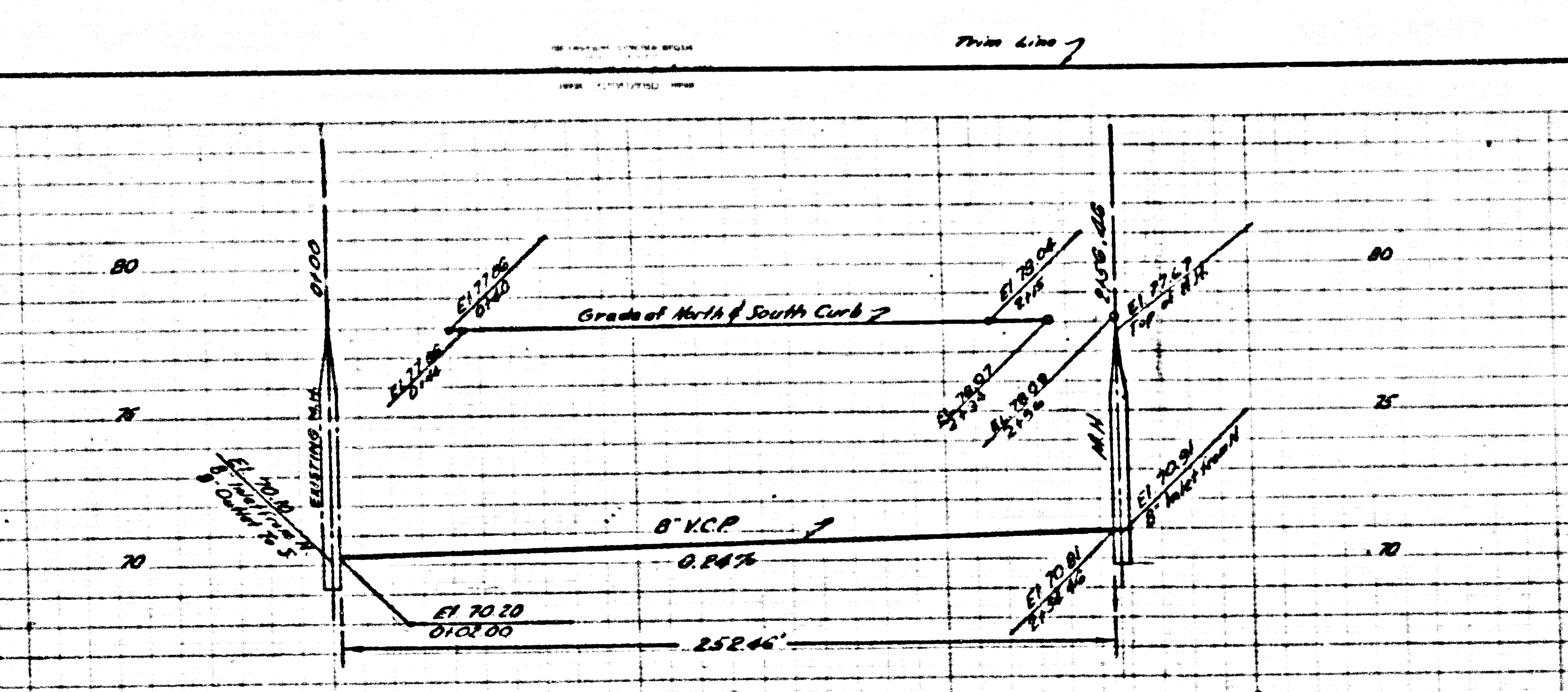
(3)

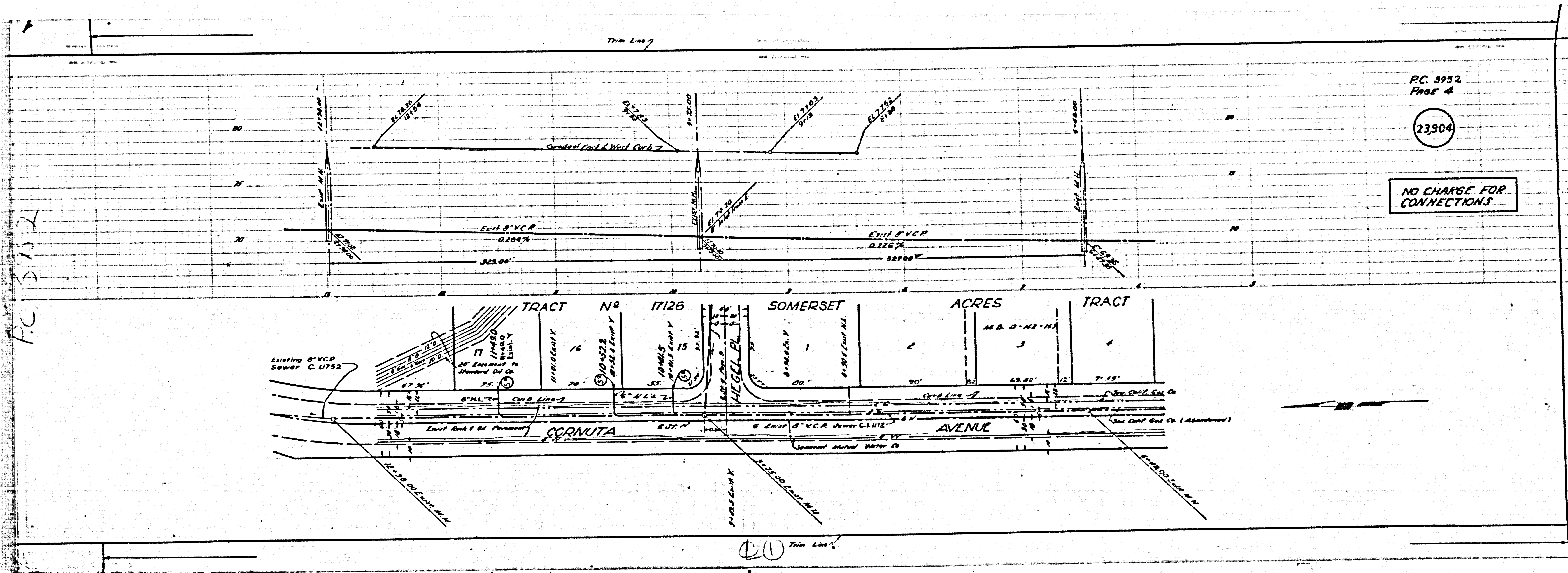
PC 3952
PAGE 3

23,803

NO CHARGE FOR
CONNECTIONS

FOR
NS





P.C. 3152

P.C. 3952
Phase 4

23904

NO CHARGE FOR CONNECTIONS

①① Trim Line