

INDEX MAP
SCALE 1"=200'
TRACT NO. 22282
P.C. 3962

LOMITA BLDG. DIST. NO. 7-1

- NOTES
1. PROPERTY STAKES ON THE PROPERTY LINE OR PROPE. Y LINES PRODUCED AT RIGHT ANGLES TO THE SEWER LINE AT THE CENTER LINE OF EACH MANHOLE.
 2. NO IMPROVEMENTS OF THE COUNTY ENGINEER SHALL SURVEY OR LAYOUT ANY PORTION OF THE WORK.
 3. THE OWNER OR HIS AUTHORIZED REPRESENTATIVE SHALL FURNISH THE COUNTY ENGINEER WITH GRADE SHEETS AND STATIONING FOR ALL HOUSE LATERALS AND T BRANCHES AND SHALL PROVIDE STAKES FOR THEM AT THEIR PROPERTY LOCATIONS WITH STATIONING PLAINLY MARKED. ANY CHANGES IN LOCATION SHALL BE REQUESTED IN WRITING BY THE OWNER OR HIS REPRESENTATIVE.
 4. NO REVISIONS SHALL BE MADE IN THESE PLANS WITHOUT THE APPROVAL OF THE COUNTY ENGINEER.
 5. USE STANDARD MANHOLE FRAMES AND COVERS, S.A. 117, EXCEPT AS NOTED.
 6. USE STANDARD STRENGTH PIPE EXCEPT AS NOTED.
 7. USE CEMENT MORTAR FOR ALL VITRIFIED CLAY PIPE JOINTS.
 8. REINFORCE ALL TRENCHES WITHIN PAVED AREAS TO MEET L.A. COUNTY ROAD DEPT. OR CALIF. STATE HIGHWAY DEPT. REQUIREMENTS IN ACCORDANCE WITH PROFILES.
 9. ENCASE FOUR FEET OF SEWER AT POINTS OF INTERFERENCE WITH POLES, S.A. 119.
 10. HOUSE LATERALS TO BE CONSTRUCTED WITH INVERTS AT PROPERTY LINE 6" JUST BELOW CURB GRADE EXCEPT AS NOTED.
 11. ALL STRUCTURES SHALL BE SPICE SPHERE STRUCTURES, S.A. 164, EXCEPT AS NOTED.
 12. FOR ALLOWABLE LEAKAGE TEST U.S. FORMULA NO. 1 SPEC'S, SEC. 6A.
 13. MANHOLE TOPS IN UNIMPROVED AREAS OF WAY TO BE 4" ABOVE FINISHED GRADE.
 14. THE PROPERTY ENGINEER IS TO FURNISH THE HOUSE LATERAL DEPTH AT THE PROPERTY LINE BELOW THE (7 1/2" OF CURB ELEVATION) FOR EACH HOUSE LATERAL, ON THE GRADE SHEET.

PROFILE ALIGNMENT AND GRADE OF **P.C. 3962**
SANITARY SEWERS PAGE **1**
TO BE CONSTRUCTED IN
TRACT NO. 22282 (24,065)
(8)

PRIVATE CONTRACT NO. 3962
W.S. 28
4 SHEETS; 8 PAGES
SCALE: HORIZ. 1"=40' VERT. 1"=4' **September, 1956**
PREPARED IN THE OFFICES OF
NATIONAL ENGINEERING CO.
BY *Edward J. Egan*
REG. C. E. NO. 5828
FOR LEGEND SEE PLAN NO. S-A-64

COLLECT CHARGES
AS INDICATED
2 Curb 1-15-56

CITY OF TORRANCE
APPROVED *Ronald W. Bishop* 10-19-56
CITY ENGINEER

B.M. S.Y. 3515
L & T. in west sidewalk in front
of Bldg. # 1978 @ S.E. cor. Lomita
& Eshelman aves.
ELEV. 65.708

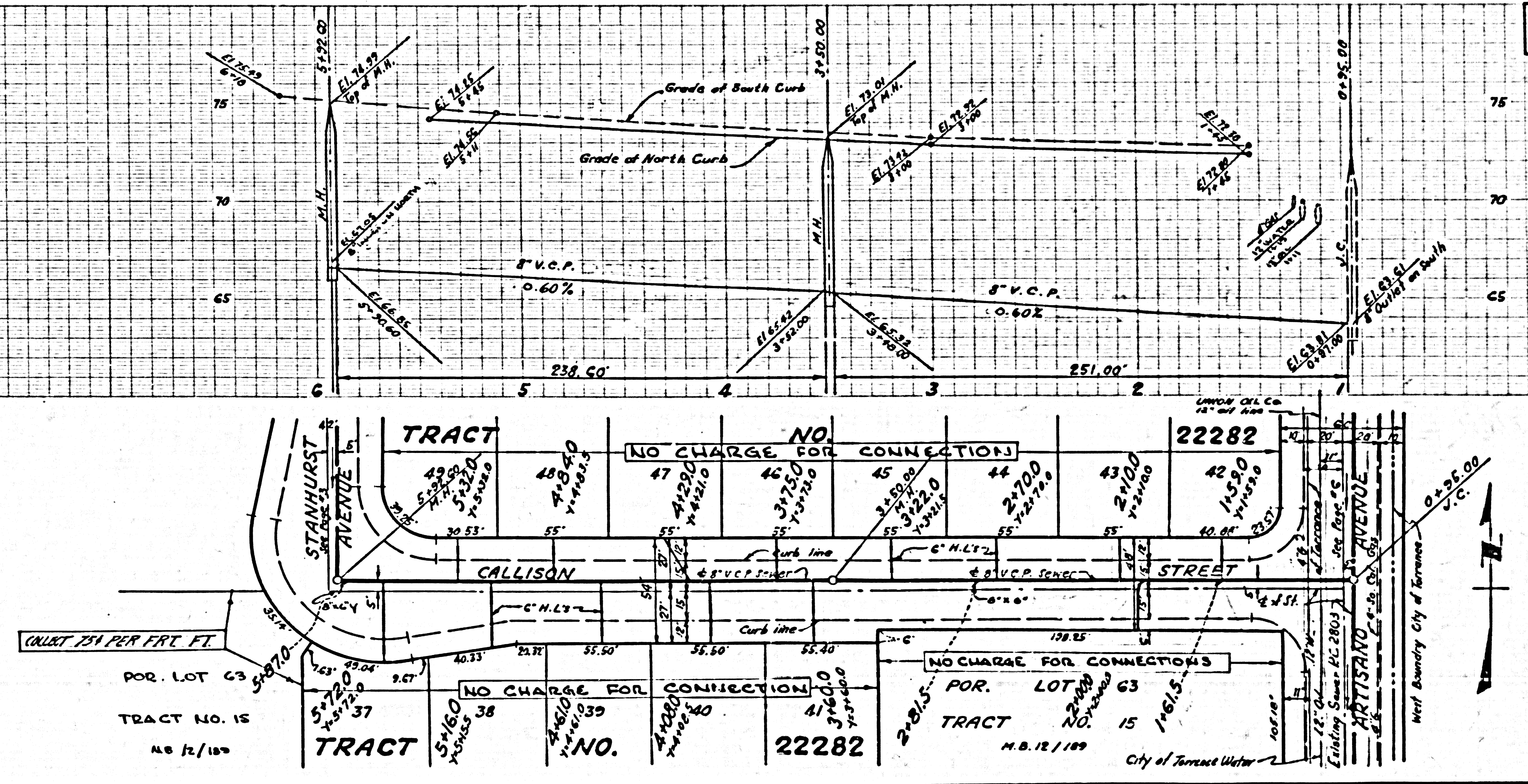
REVISED SHEET 4 PAGE 7 Sewer Location in Artisans
SHEET 2 PAGE 4 *Rev. 11-28-56*
OFFICE OF COUNTY ENGINEER, DIV. C.E. 7860

REVISED SHEET 4
PAGE 7. M.H.D. 1010107 *11-11-56*
OFFICE OF COUNTY ENGINEER, DIV. C.E. 3445
checked 1-30-57 McLaren

P.C. 3962 PAGE 2

COLLECT CHARGES
AS INDICATED

(24,066)



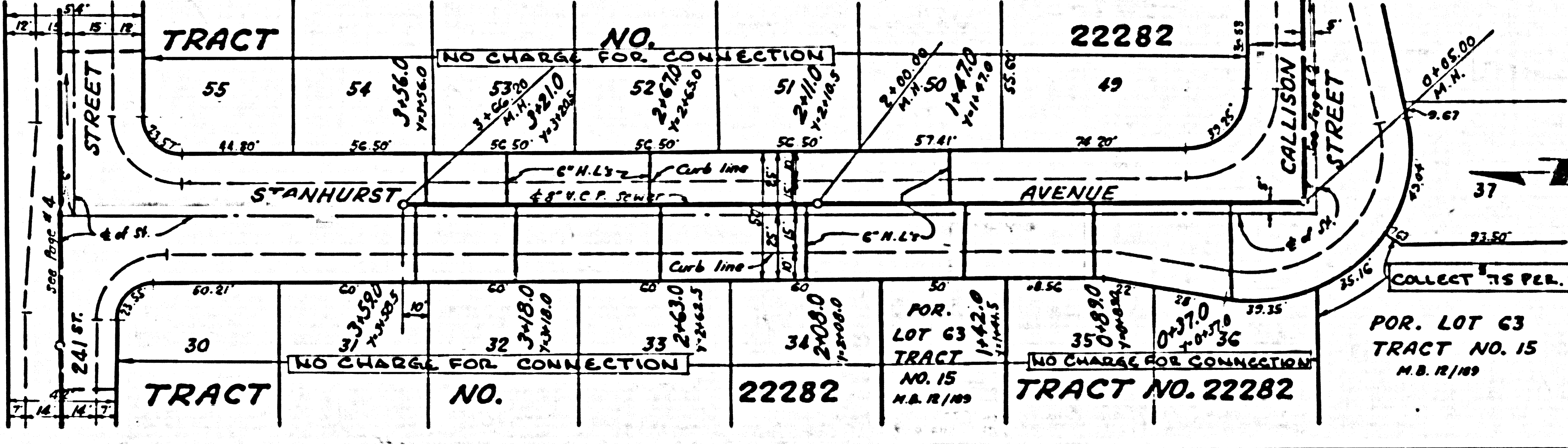
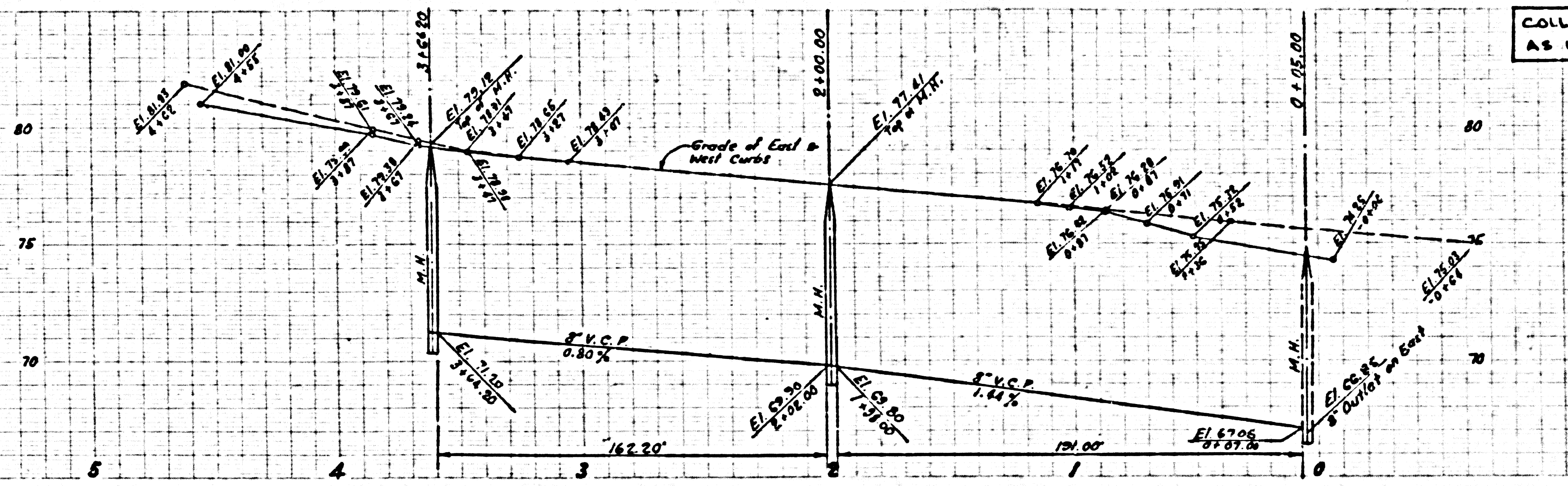
TRACT NO. 22282

P.C. 3962

P.C. 3962

COLLECT CHARGES AS INDICATED

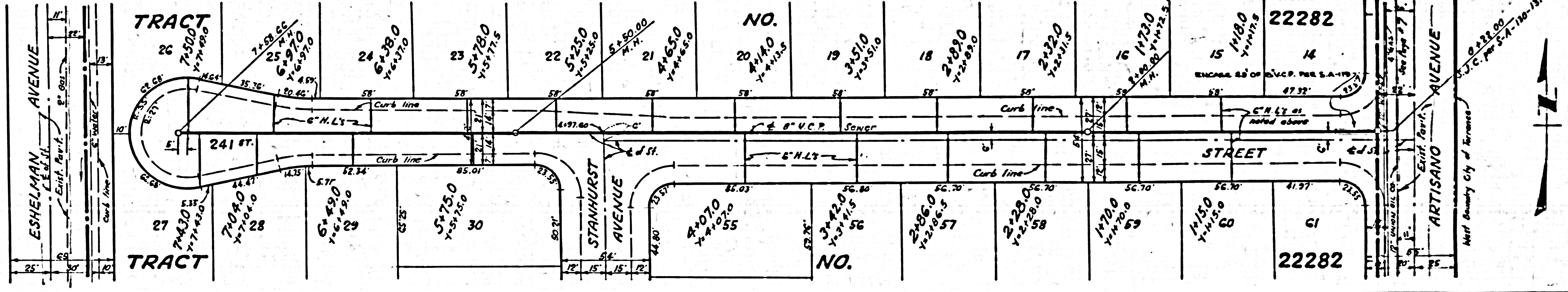
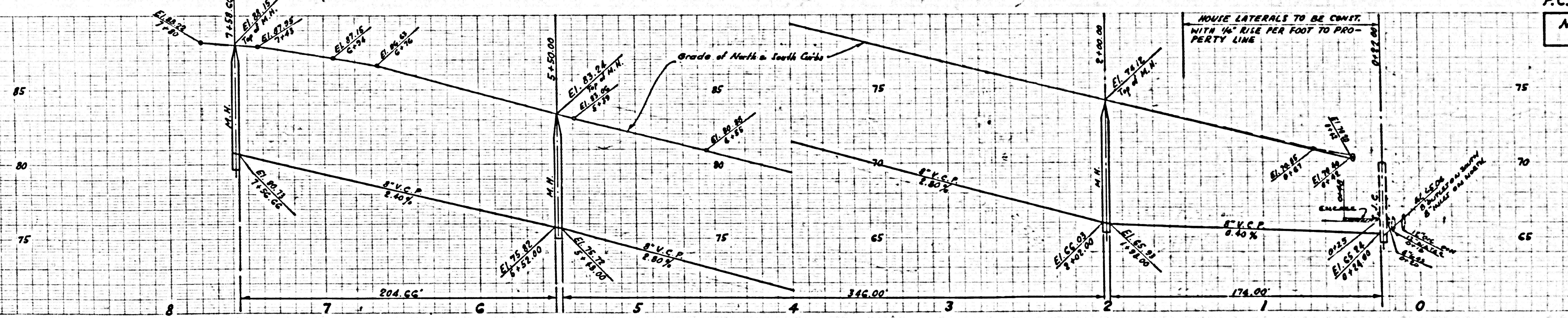
24,067



R.L.

NO CHARGE FOR CONNECTIONS

24,068



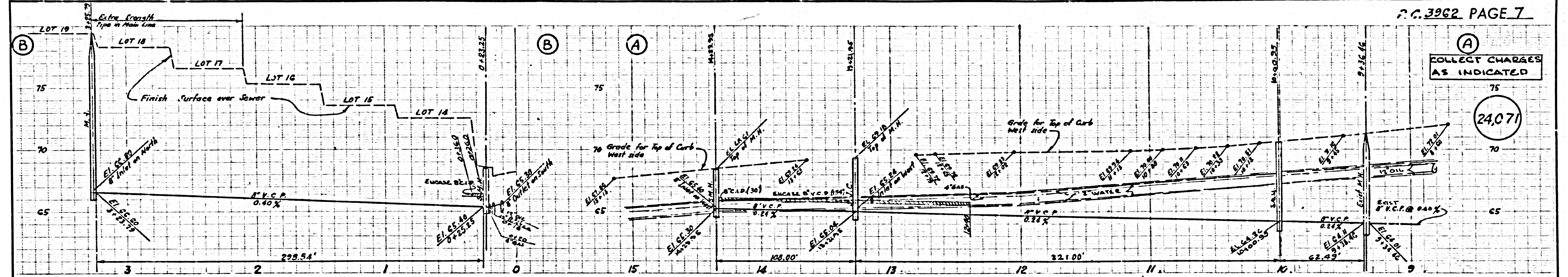
R.L.

see c.s.

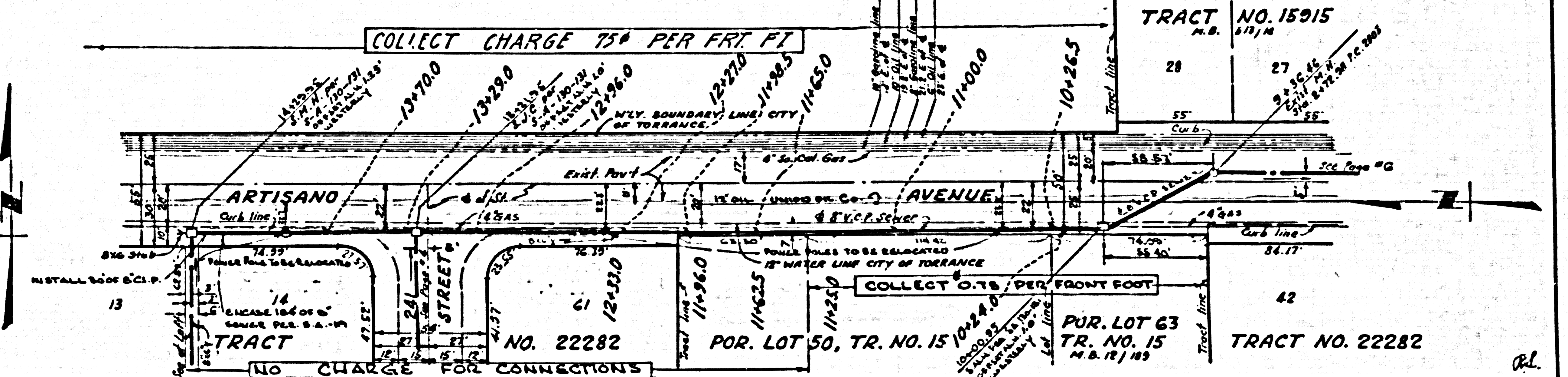
72 2222

COLLECT CHARGES AS INDICATED

24,071

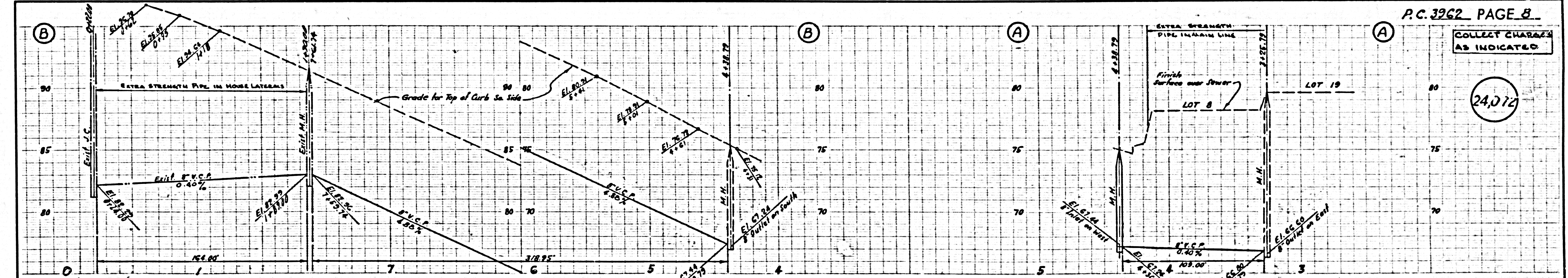


TRACT	NO.	TRACT	NO.
NO CHARGE FOR CONNECTION	22282	NO CHARGE FOR CONNECTION	22282
10	20390	11	14770
12	1422.5	13	1225.0
14	1800.0	15	1125.0
16	1461.0	17	1250.0
18	2496.5	19	2441.5
20	2330.0	21	2170.0
22	2030.0	23	1770.0
24	1477.0	25	1225.0
26	1225.0	27	1125.0
28	1800.0	29	1461.0
30	1461.0	31	1250.0
32	1250.0	33	1125.0
34	1125.0	35	1000.0
36	1000.0	37	875.0
38	875.0	39	750.0
40	750.0	41	625.0
42	625.0	43	500.0
44	500.0	45	375.0
46	375.0	47	250.0
48	250.0	49	125.0
50	125.0	51	0.0

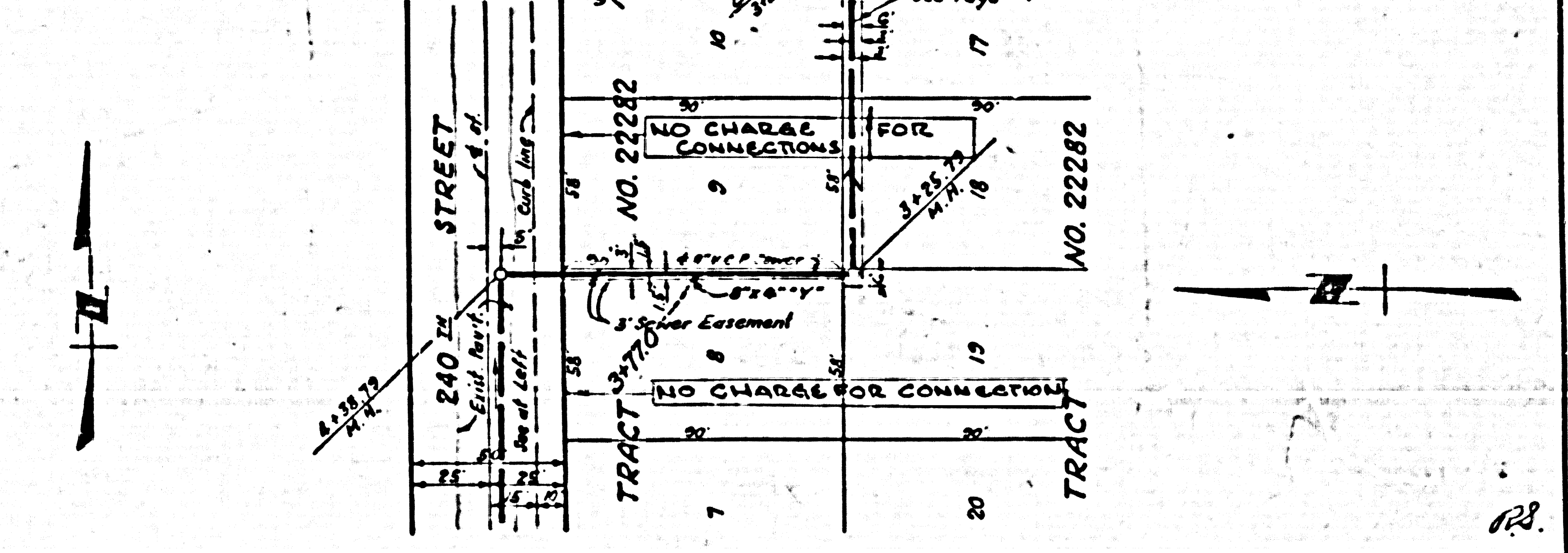


COLLECT CHARGES AS INDICATED

24,072



TRACT	NO.	TRACT	NO.
NO CHARGE FOR CONNECTION	437	NO CHARGE FOR CONNECTION	22282
1	6270	1	6270
2	5780	2	5780
3	5290	3	5290
4	4800	4	4800
5	4310	5	4310
6	3820	6	3820
7	3330	7	3330
8	2840	8	2840
9	2350	9	2350
10	1860	10	1860
11	1370	11	1370
12	880	12	880
13	390	13	390
14	0.0	14	0.0



24,072