

B.M. 561350 Lead and Tack  
2.4' South of curb return at  
the S.E. Corner of Clark St. and  
Seventh Avenue Elev. 32.2406

**PUEBLO BUILDING DISTRICT NO. 2**

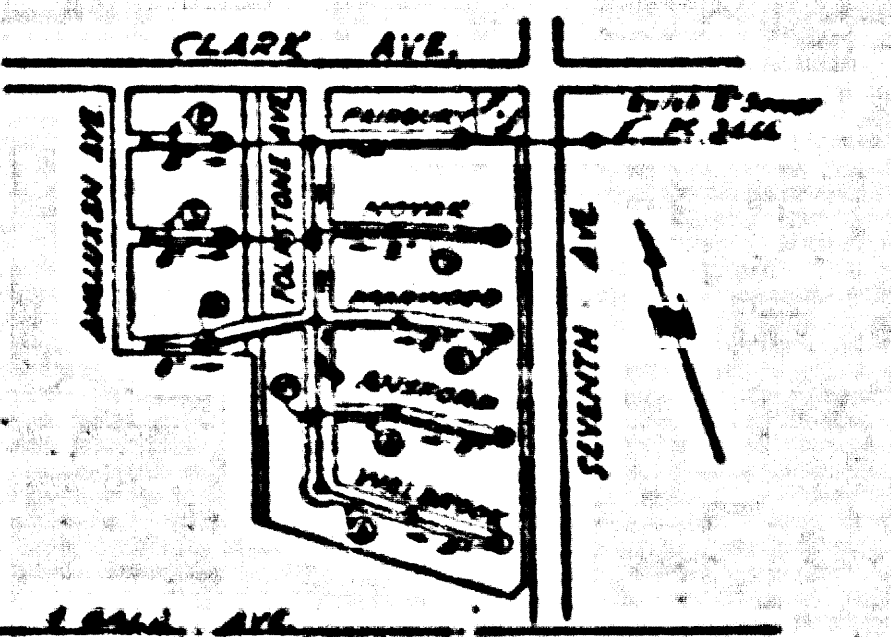
- NOTE:**  
Provide status on the property lines or property lines produced at right angles to the sewer line at the center line of each manhole.
- No representative of the County Engineer will survey or layout any portion of the work. The owner or his authorized representative shall furnish the County Engineer with grade sheets and stations for all house laterals and Y branches and shall provide status for them at their proper locations with stationing plainly marked. Any change in location shall be requested in writing by the owner or his representative.
- No revisions shall be made in these plans without the approval of the County Engineer.
1. Use standard manhole frames and covers, S-o-117.
  2. Use standard strength pipe except as noted.
  3. Use cement mortar for all vitrified clay pipe joints.
  4. Resurface all trench with a paved area to meet L.A. County Road Dept. or California State Highway Dept. requirements in accordance with permit.
  5. Encase four feet of sewer at points of interference with poles, S-o-119.
  6. House laterals to be constructed with inverts at property line 5 feet below curb grade except as noted.
  7. All structures shall be brick sewer structures, S-o-104.
  8. For allowable leakage test, use Formula No. 1 Spec's., Sec. 51.
  9. Manhole tops in unimproved Rights-Of-Way to be 6" above finish grade.
  10. The Private Engineer is to furnish the House Lateral depth at the Property Line below the top of Curb elevation for each House Lateral, on the Grade Sheet.

**TABLE**

SHEET NO.	PAGES
1	1-8
2	6-8

**CONNECTION CHARGES AS NOTED**

*R. K. Baker*



**INDEX MAP**  
SCALE 1"=80'  
TR. NO. 21462  
RC. 3969

**- REVISION -**  
CURB GORGE LOWERED ON  
FOLSTONE AVE. WILBROOK DR.  
RANFORD ST. MONMOUTH ST. AND  
HAWKWOOD ST.  
APPROVED *R. K. Baker* 11-19-58  
DATE

PROFILE, ALIGNMENT AND GRADE OF  
**SANITARY SEWERS**  
TO BE CONSTRUCTED IN  
**TRACT NO. 21462**

RC. 3969  
PAGE 1

26,601

PRIVATE CONTRACT NO. 3969  
W. S. 97  
2 SHEETS, 8 PAGES  
Scale:  $\frac{1}{4}$ " = 1'-0"  
NOVEMBER, 1955  
PREPARED IN THE OFFICES OF  
**LOVETT & HART**  
ENGINEERS & SURVEYORS

*J. P. Collins*  
NOV 22 1955  
FOR LEGEND SEE PLAN NO. 50-64

**NOTE:**  
Grades to which this improvement is to be constructed are shown on plans and profiles. Grade points for top of curbs, center line of streets, or center line of alleys are shown by circles on profiles. At all points between designated points the grade shall be established as to conform to a straight line drawn between said designated points.

Elevations are in feet above U.S.C. & G.S. sea level datum of 1929.

This drawing and the data hereon are hereby made a part of the specifications. Work shall be constructed according to specifications on file in the office of the County Engineer and it will be prosecuted only in the presence of the County Engineer.

Before work can be started, the contractor must obtain a permit to excavate in County streets from the L.A. County Road Dept., 108 W. 2nd St. and make a deposit with the County Engineer, Room 324, 233 South Broadway, sufficient to cover the cost of construction inspection and record plans.

Approval of this plan by the County of Los Angeles does not constitute a representation as to the accuracy of the location of or the existence or non-existence of any underground utility, pipe, or structure within the limits of this project. This note applies to all sheets.

If work is to be done on a State Highway, a permit must be obtained from the State of California, Division of Highways, 120 South Spring Street.

**COUNTY OF LOS ANGELES, CALIFORNIA**

Approved, John A. Lambie, County Engineer  
Approved, A. M. Rawn  
CHIEF ENGINEER TO SAN. DIST. NO. 15  
*J. P. Collins*  
ENGINEER  
Checked by *R. K. Baker* 9-6-56  
Office of County Engineer, Dep. G. & E. Room 7860

TRACT NO. 21462

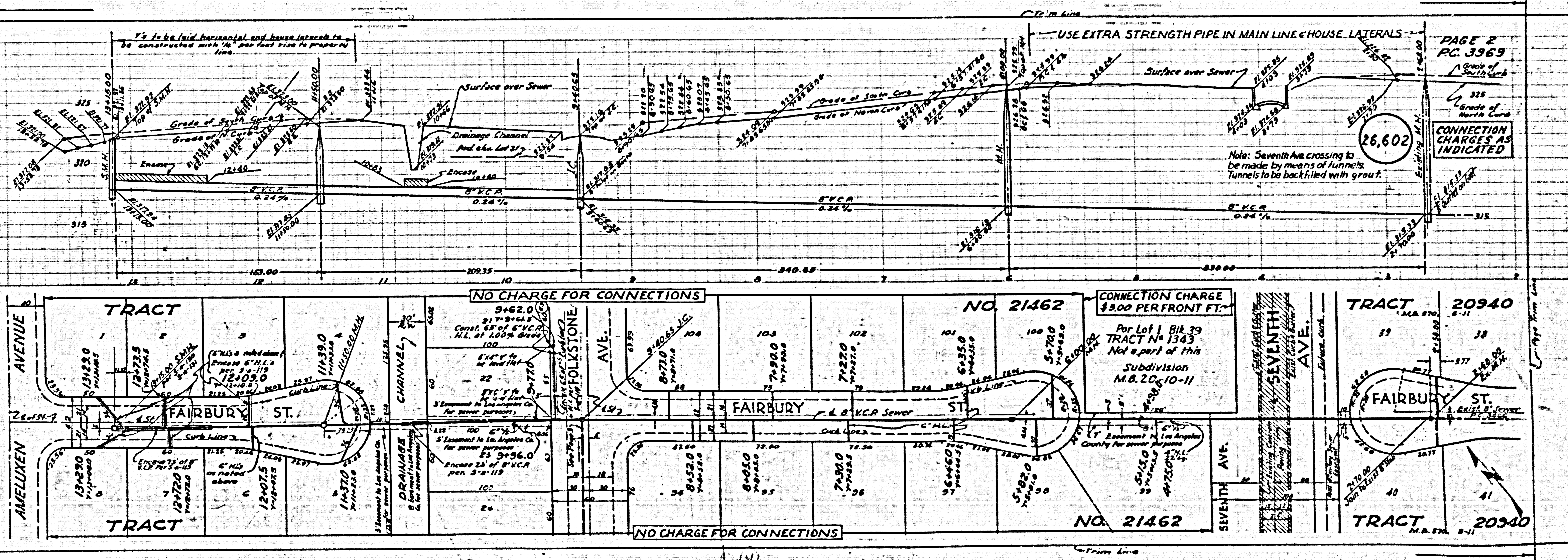
RC. 3969

1



CHARGE FOR CONNECTION  
6,603

462



PAGE 2  
PC 3969  
Grade of South Curb  
Grade of North Curb  
CONNECTION CHARGES AS INDICATED

Note: Seventh Ave Crossing to be made by means of tunnels. Tunnels to be backfilled with grout.

USE EXTRA STRENGTH PIPE IN MAIN LINE & HOUSE LATERALS

Surface over Sewer

Grade of South Curb

Grade of North Curb

8" V.C.R. 0.24%

8" V.C.R. 0.24%

8" V.C.R. 0.24%

8" V.C.R. 0.24%

8" V.C.R. 0.24%

8" V.C.R. 0.24%

8" V.C.R. 0.24%

8" V.C.R. 0.24%

8" V.C.R. 0.24%

8" V.C.R. 0.24%

8" V.C.R. 0.24%

8" V.C.R. 0.24%

8" V.C.R. 0.24%

8" V.C.R. 0.24%

8" V.C.R. 0.24%

NO CHARGE FOR CONNECTIONS

NO. 21462

CONNECTION CHARGE \$8.00 PER FRONT FT.

For Lot 1 Bk 39 TRACT No 1343 Not a part of this Subdivision M.B. 20-10-11

SEVENTH AVE.

FAIRBURY ST.

FAIRBURY ST.

FAIRBURY ST.

FAIRBURY ST.

FAIRBURY ST.

FAIRBURY ST.

FAIRBURY ST.

NO CHARGE FOR CONNECTIONS

NO. 21462

TRACT 20940

TRACT 20940

TRACT 20940

TRACT 20940

TRACT 20940

TRACT 20940

TRACT 20940

TRACT 20940

TRACT 20940

TRACT 20940



RC.3969

PAGE 4

RC.3969

Page 3

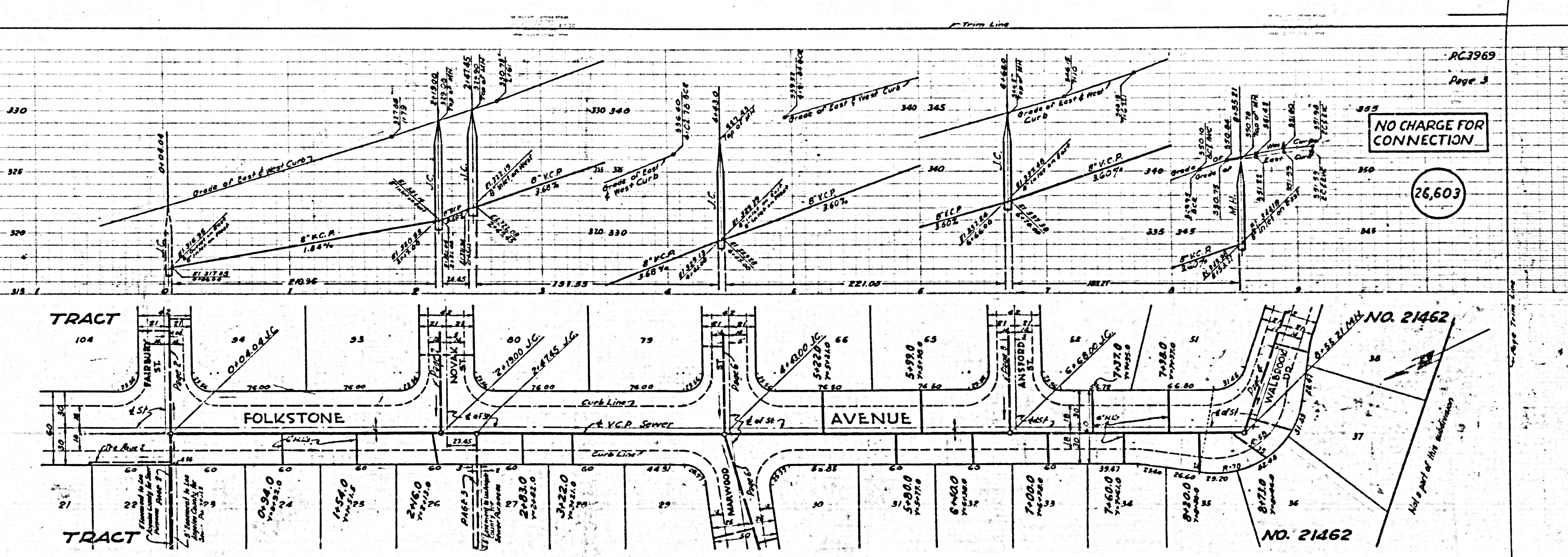
NO CHARGE FOR CONNECTION

26,604

NO CHARGE FOR CONNECTION

26,603

ACT NO. 20940  
M.B. 570, 5-11



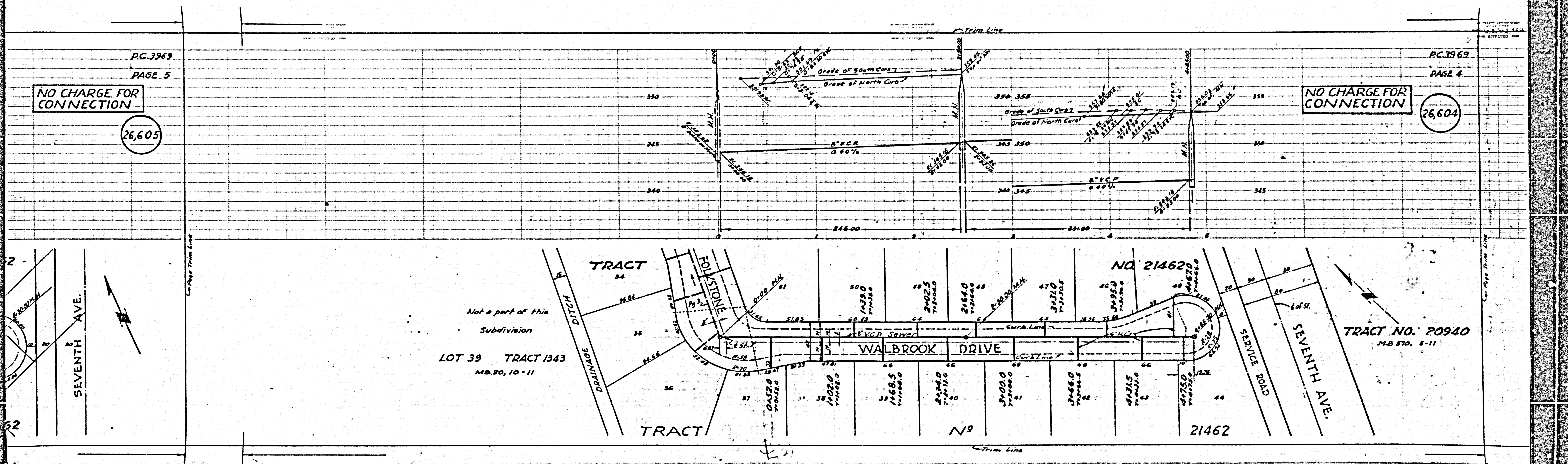


NO CHARGE FOR CONNECTION

26,605

NO CHARGE FOR CONNECTION

26,604





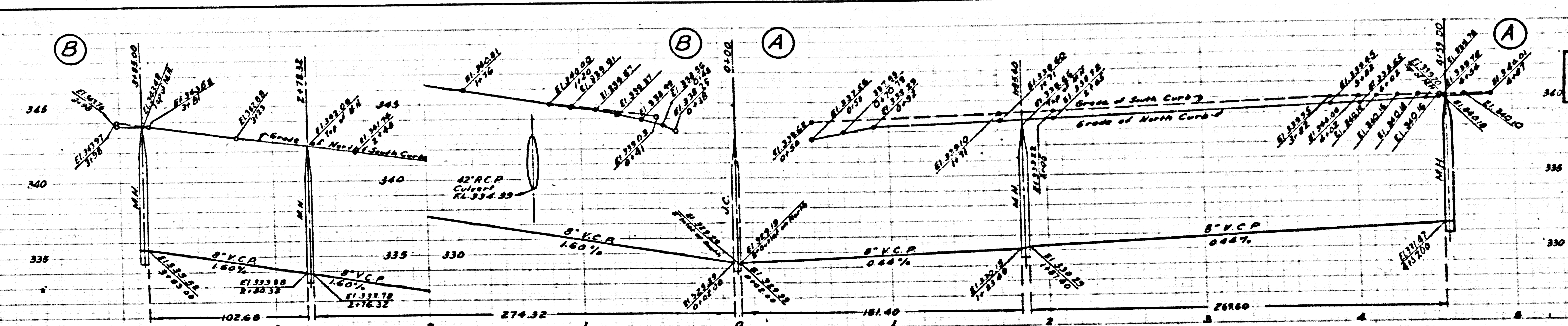




C.3969  
PAGE 7  
PAGE FOR  
SECTION

607

Page Trim Line

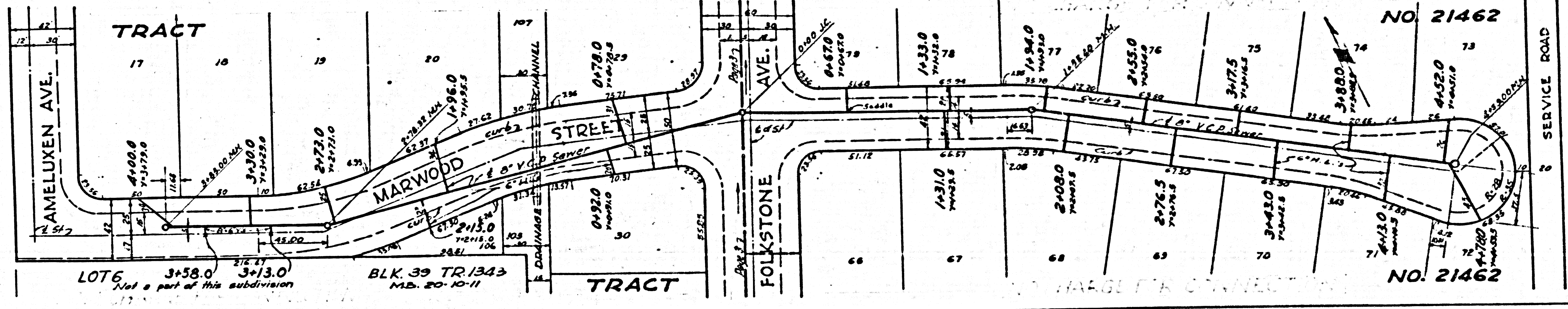


AC.3969  
PAGE 6  
NO CHARGE  
FOR  
CONNECTIONS

26,606

TRACT NO. 21462

LOT 39-TR. 1343  
M.B. 20-10-11  
Not a part of this subdivision



TRACT NO. 21462

AC. 3969

RL



PC.3969  
PAGE 8

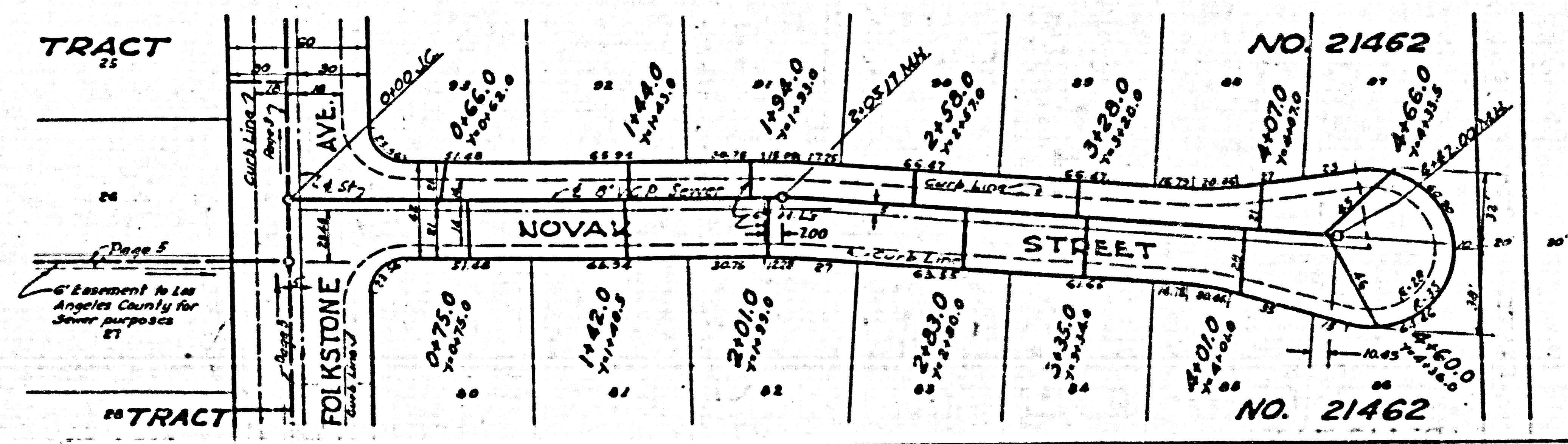
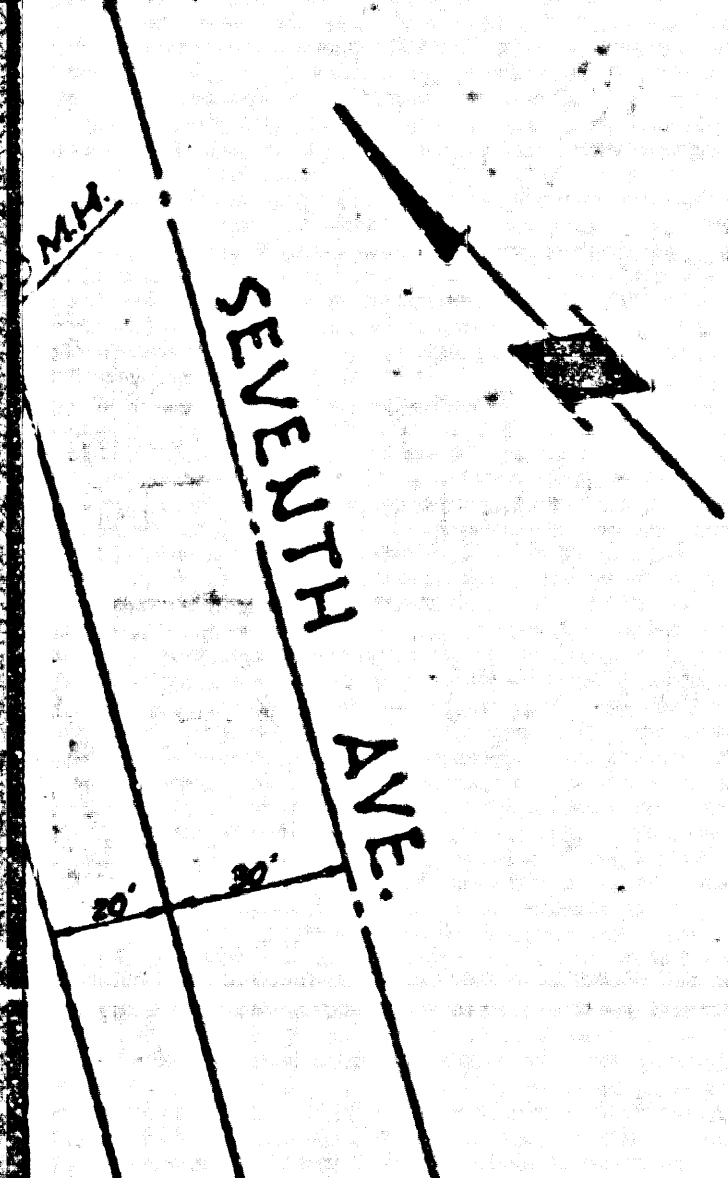
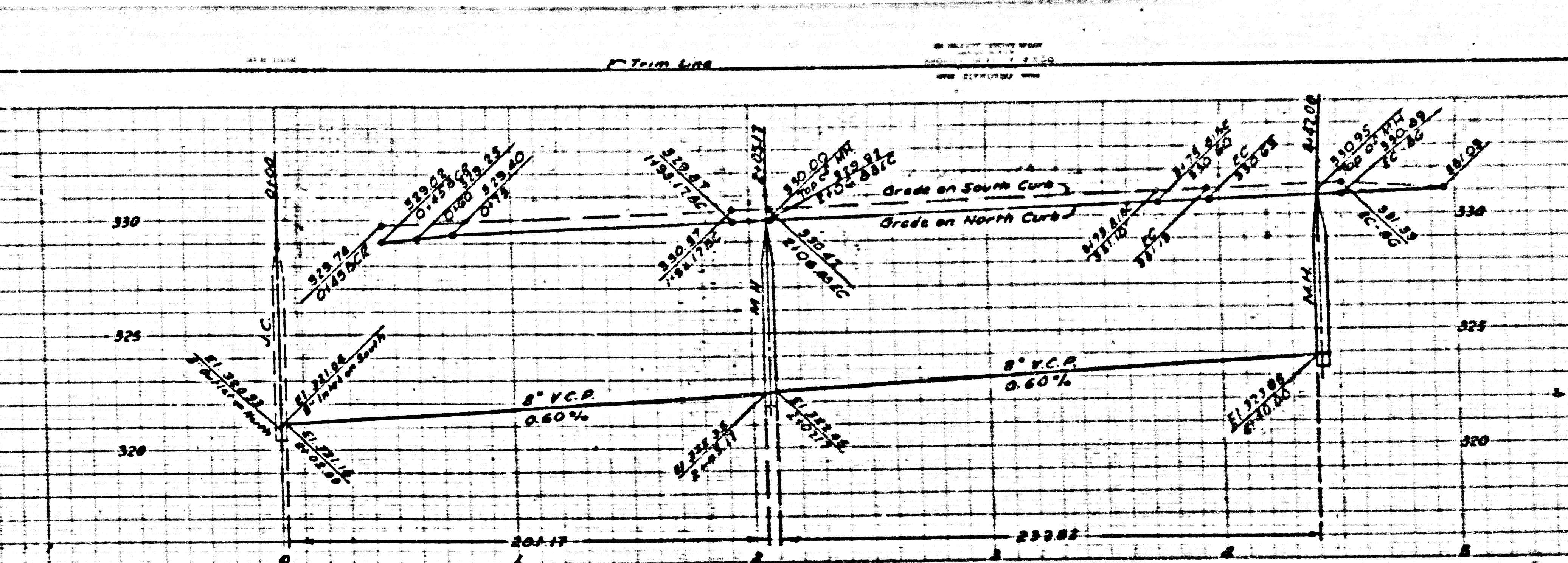
NO CHARGE FOR  
CONNECTION

26,608

PC.3969  
PAGE 7

NO CHARGE FOR  
CONNECTION

26,607



TRACT 25

TRACT 26

NO. 21462

NO. 21462

Page 5  
Easement to Los Angeles County for Sewer purposes

Page Trim Line

Page Trim Line

Trim Line

Trim Line



