

B.M. S.Y. 534 Elev. 48.766
 Brass plate in Concrete Monument
 30" deep 50" W. of E. of Santa Fe Ave. M.C. 476423.58

LENNOX BLDG. DIST. NO. 7

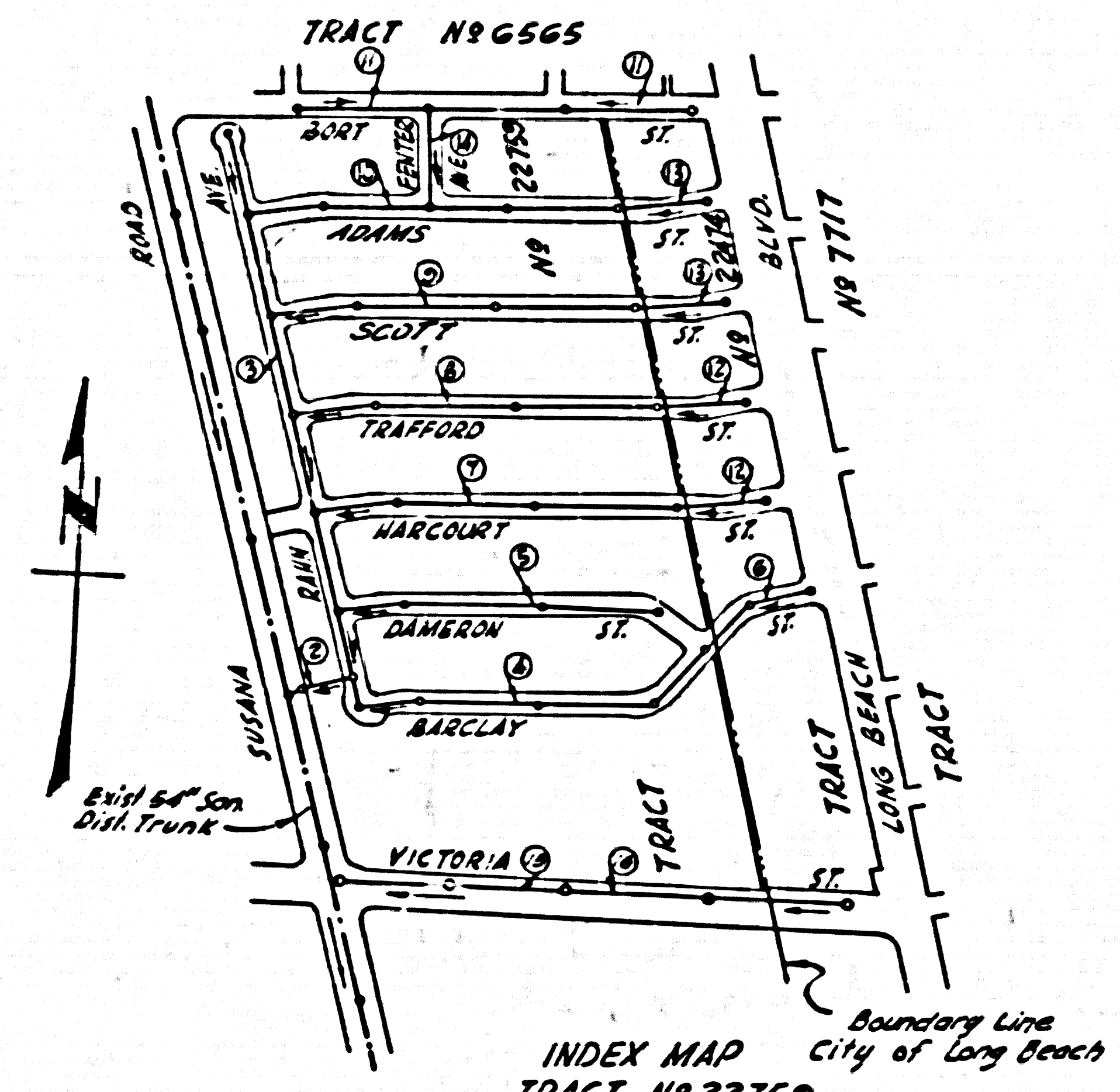
PROFILE ALIGNMENT AND GRADE OF
SANITARY SEWERS P.C. 3974
 TO BE CONSTRUCTED IN PAGE 1

TRACTS
 No 22759
 No 22474 (16)
PRIVATE CONTRACT NO. 3974

W.S. 32
 8 SHEETS, 16 PAGES
 SCALE: 1" = 40' APRIL, 1956
 PREPARED IN THE OFFICES OF
ENGINEERING SERVICE CORP.

By P. F. Kuhn S.P.C.E. NO. 3528
 FOR LEGEND SEE PLAN NO. S-A-64

- NOTES:
- PROVIDE STAKES ON THE PROPERTY LINE OR PROPERTY LINES PRODUCED AT RIGHT ANGLES TO THE SEWER LINE AT THE CENTER LINE OF EACH MANHOLE.
 - NO REPRESENTATIVE OF THE COUNTY ENGINEER WILL EXAMINE OR LAYOUT ANY PORTION OF THE WORK.
 - THE OWNER OR HIS AUTHORIZED REPRESENTATIVE SHALL FURNISH THE COUNTY ENGINEER WITH GRADE SHEETS AND STATION FOR ALL HOUSE LATERALS AND Y BRANCHES AND SHALL PROVIDE STAKES FOR THEM AT THEIR PROPOSED LOCATIONS WITH STATIONING PLAINLY MARKED. ANY CHANGE IN LOCATION SHALL BE REQUESTED IN WRITING BY THE OWNER OR HIS REPRESENTATIVE.
 - NO REVISIONS SHALL BE MADE IN THESE PLANS WITHOUT THE APPROVAL OF THE COUNTY ENGINEER.
 - USE STANDARD MANHOLE FRAMES AND COVERS, S.A-117, EXCEPT AS NOTED.
 - USE STANDARD ENGINEERS PIPE EXCEPT AS NOTED.
 - USE CEMENT MORTAR FOR ALL WITHING GLASS PIPE JOINTS.
 - RESURFACE ALL TRENCH WITHIN PAVED AREA TO MEET L.A. COUNTY ROAD DEPT. OR CALIF. STATE HIGHWAY DEPT. SPECIFICATIONS IN ACCORDANCE WITH "MANUAL".
 - ENCASE FOUR FEET OF SEWER AT POINTS OF INTERFERENCE WITH POLES, S.A-119.
 - HOUSE LATERALS TO BE CONSTRUCTED WITH INVERTS AT PROPERTY LINE 6" FEET BELOW CURB GRADE EXCEPT AS NOTED.
 - ALL STRUCTURES SHALL BE BUILT SEWER STRUCTURES S.A-164, EXCEPT AS NOTED.
 - FOR ALLOWABLE LEAKAGE TEST USE FORMULA NO. 1000, S.P.C.E. SEC. 2.
 - MANHOLE TOPS IN UNIMPROVED RIGHTS-OF-WAY TO BE 6" ABOVE FINISHED GRADE.
 - PRIVATE ENGINEER TO FURNISH HOUSE LATERAL DEPTHS AT PROPERTY LINE 1" BELOW TOP OF CURB ELEVATION FOR EACH HOUSE LATERAL ON THE GRADE SHEET.



INDEX MAP
 TRACT No 22759
 TRACT No 22474
 SCALE: 1" = 400'

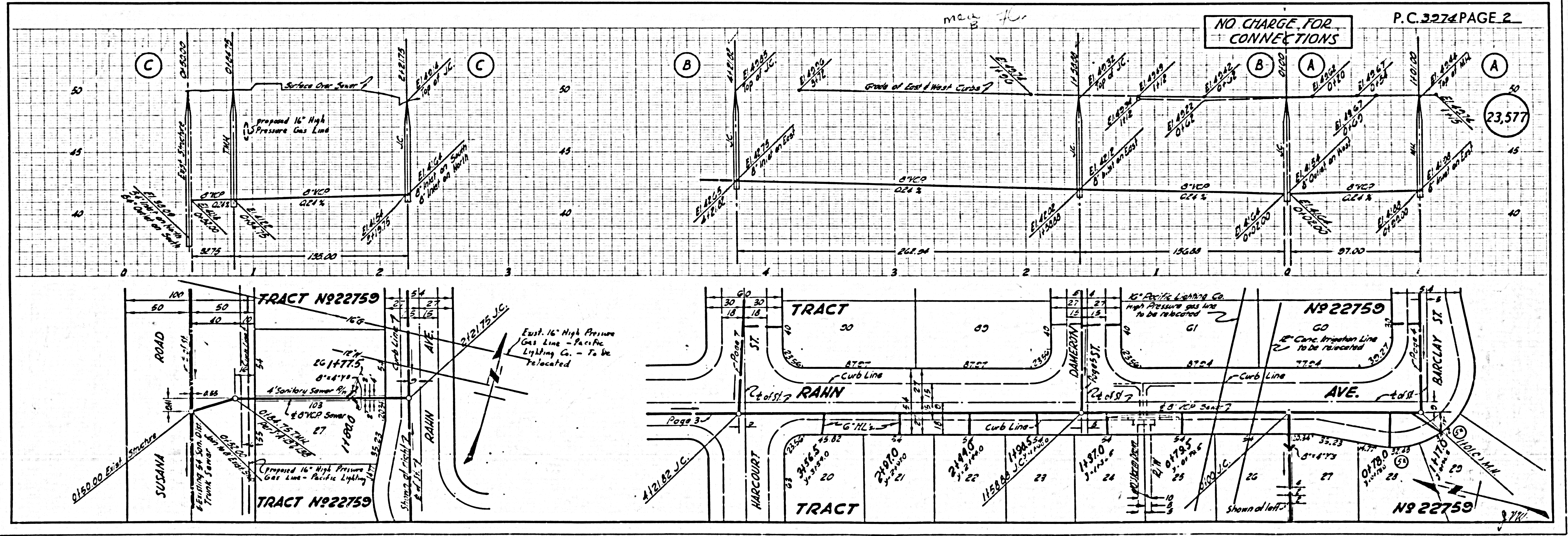
Before breaking into any existing structure
 and before final acceptance of this work,
 County Sanitation District should be notified
 in order that required inspection may be made.

NO CHARGE FOR CONNECTIONS
P. F. Kuhn

NOTE:
 GRADES TO WHICH THIS IMPROVEMENT IS TO BE CONSTRUCTED ARE SHOWN ON PLANS AND PROFILE GRADE POINTS FOR TOP OF CURB, CENTER LINE OF STREET, OR CENTER LINE OF ALLEYS ARE SHOWN BY CIRCLES ON PROFILE AT ALL POINTS BETWEEN DESIGNATED POINTS THE GRADE SHALL BE ESTABLISHED TO AS TO CONFORM TO A STRAIGHT LINE DRAWN BETWEEN SAID DESIGNATED POINTS.
 ELEVATIONS ARE IN FEET ABOVE U.S.C. & G.S. MEAN SEA LEVEL (Datum of 1929).
 THIS DRAWING AND THE DATA HEREON ARE HEREBY MADE A PART OF THE SPECIFICATIONS.
 BEFORE WORK CAN BE STARTED, THE CONTRACTOR MUST OBTAIN A PERMIT TO EXCAVATE IN COUNTY STREETS FROM THE L.A. COUNTY ROAD DEPT. THE COST OF THIS PERMIT SHALL BE PAID BY THE CONTRACTOR. ROOM FOR AN AMERICAN STANDARD 24" DIAMETER SEWER SHALL BE PROVIDED TO THE COST OF THE CONTRACTOR. INSPECTION AND RECORD PLANS.
 APPROVAL OF THIS PLAN BY THE COUNTY OF LOS ANGELES DOES NOT CONSTITUTE A REPRESENTATION AS TO THE ACCURACY OF THE LOCATION OR OF THE EXISTENCE OR NON-EXISTENCE OF ANY UNDERGROUND UTILITY PIPE, OR STRUCTURE WITHIN THE LIMITS OF THIS PROJECT THIS NOTE APPLIES TO ALL PAGES.
 IF WORK IS TO BE DONE ON A STATE HIGHWAY, A PERMIT MUST BE OBTAINED FROM THE STATE OF CALIFORNIA, DIVISION OF HIGHWAYS, 128 SOUTH SPRING STREET.

COUNTY OF LOS ANGELES, CALIFORNIA
 APPROVED, JOHN A. LAMBE, COUNTY ENGINEER
 APPROVED, A. M. BAWN, CHIEF ENGINEER
 BY P. F. Kuhn S.P.C.E. NO. 3528
 BY H. G. Gentry S.P.C.E. NO. 112
 CHECKED BY P. F. Kuhn 5-1-56
 OFFICE OF COUNTY ENGINEER, 205 C. E. NO. 7860
 PORTION IN CITY OF LONG BEACH
 APPROVED W. J. ...
 DEPUTY CITY ENGINEER OF LONG BEACH

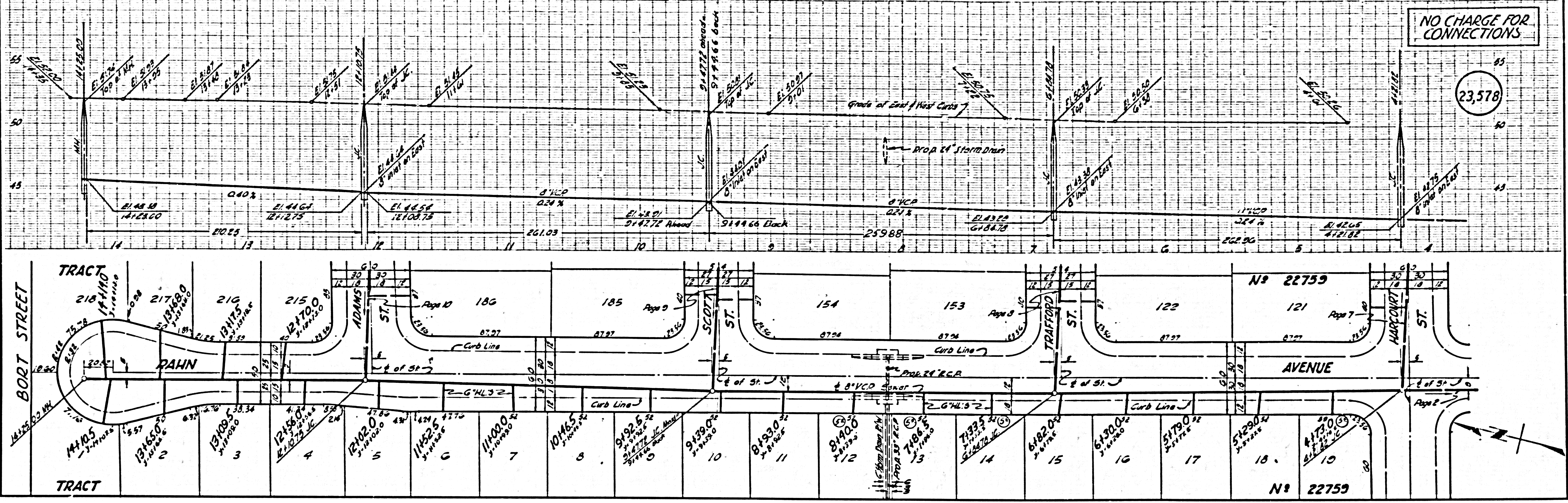
dated 10-26-56 M. J. ...



A-3974

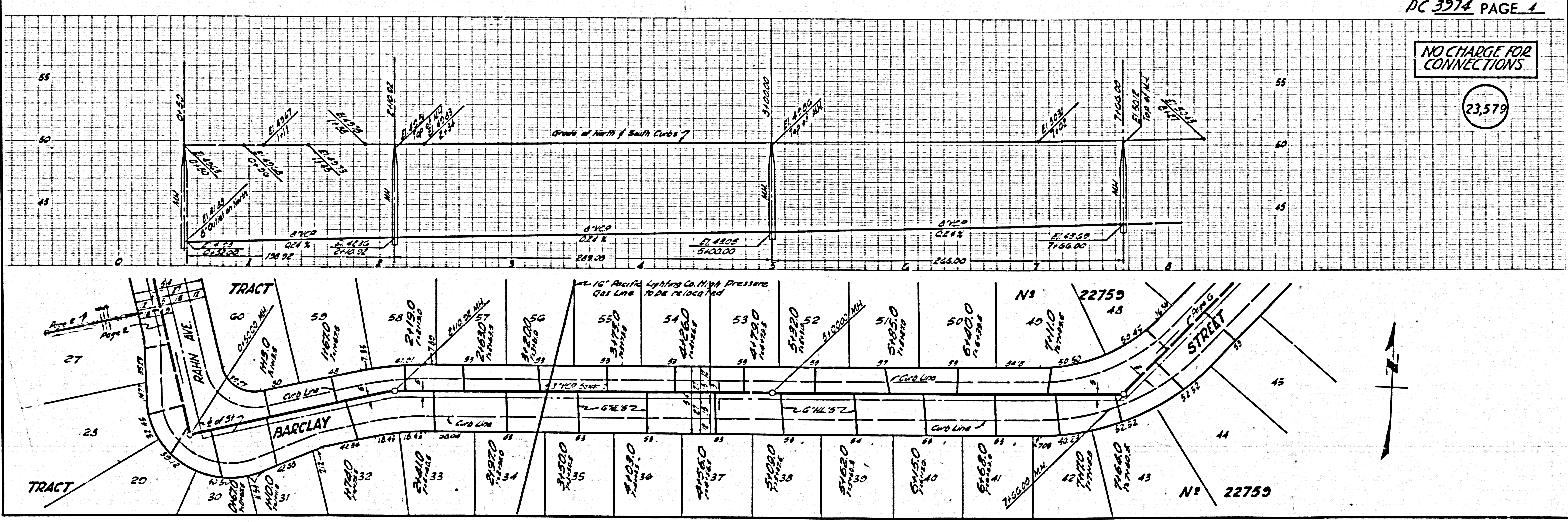
NO CHARGE FOR CONNECTIONS

23,578

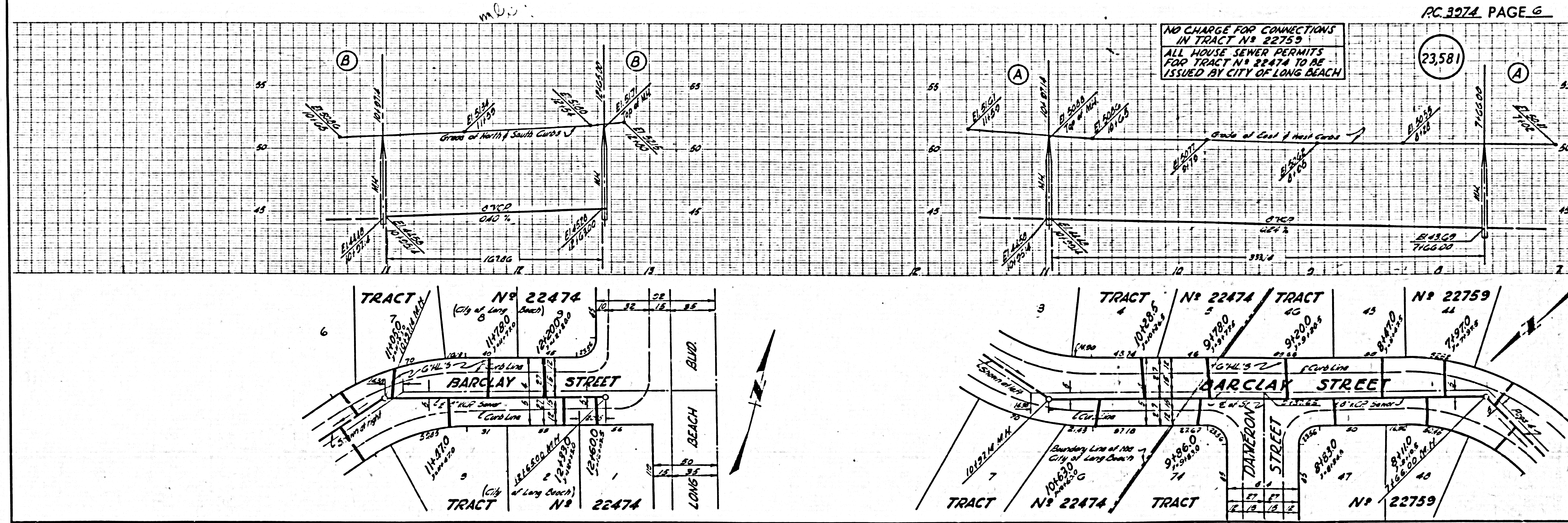
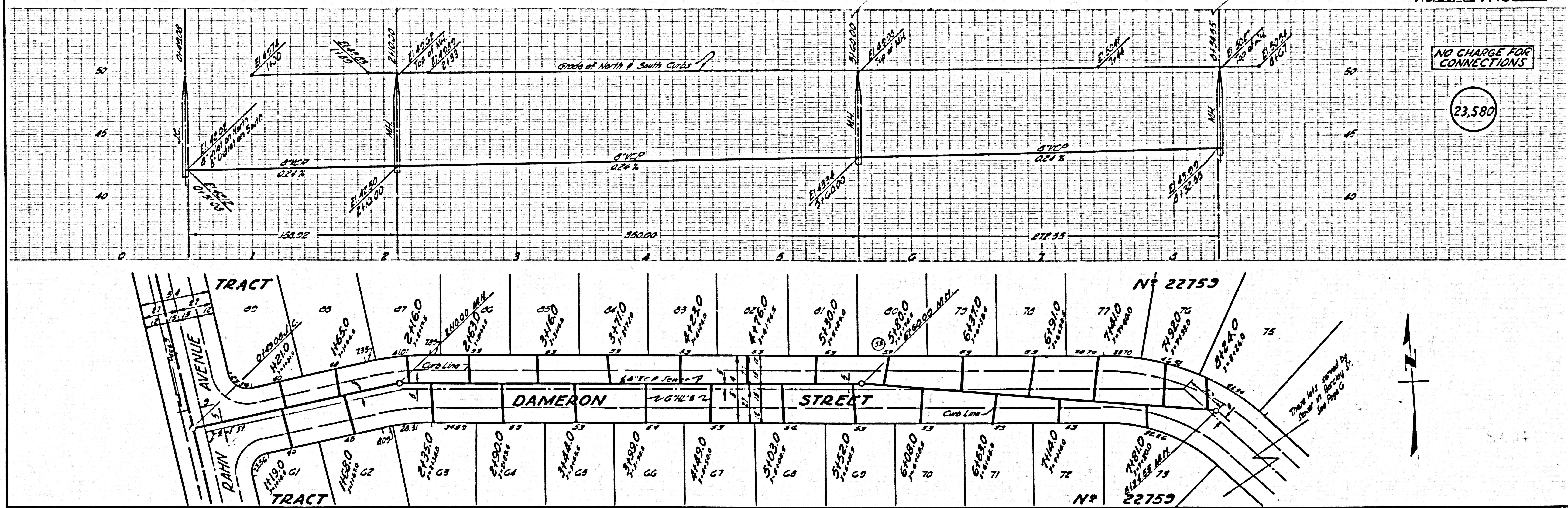


NO CHARGE FOR CONNECTIONS

23,579

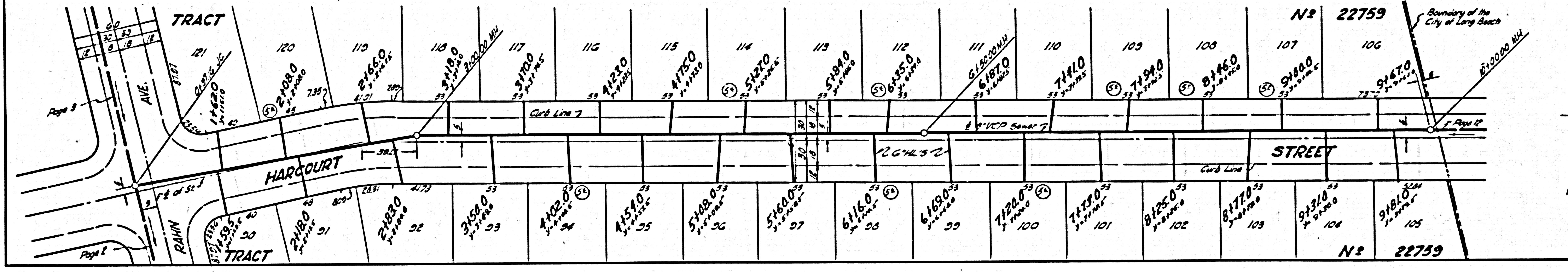
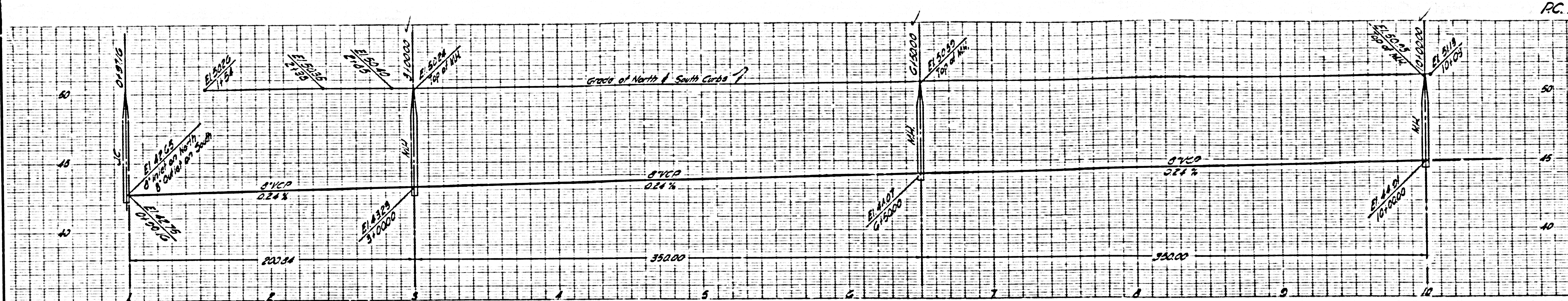


ATEC 314



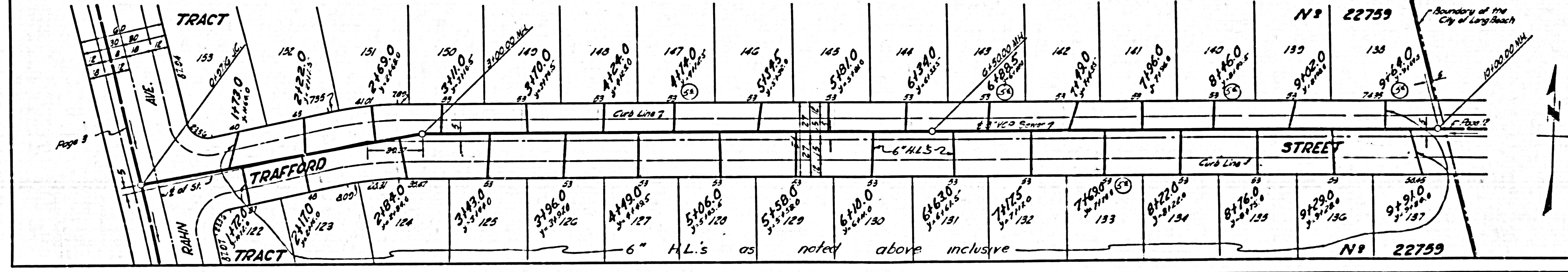
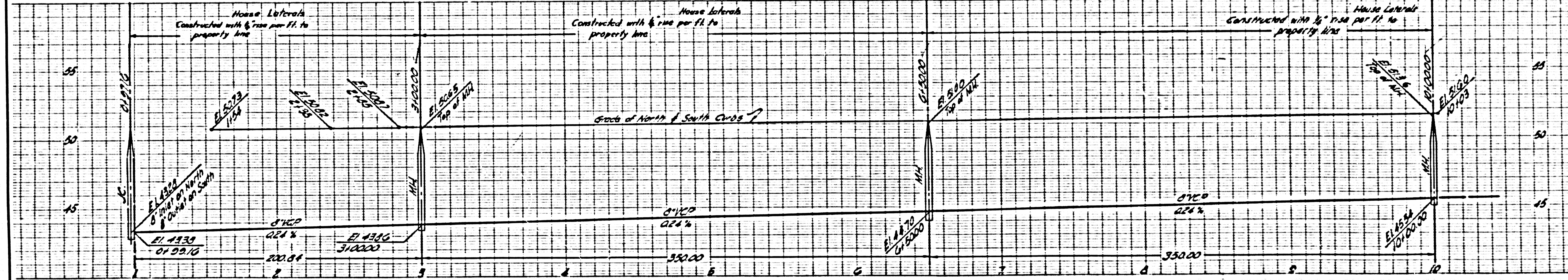
NO CHARGE FOR CONNECTIONS

23,582



NO CHARGE FOR CONNECTIONS

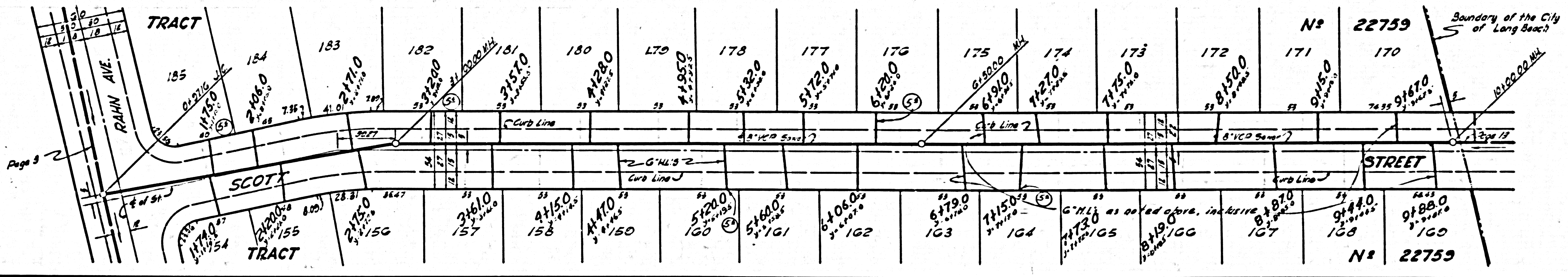
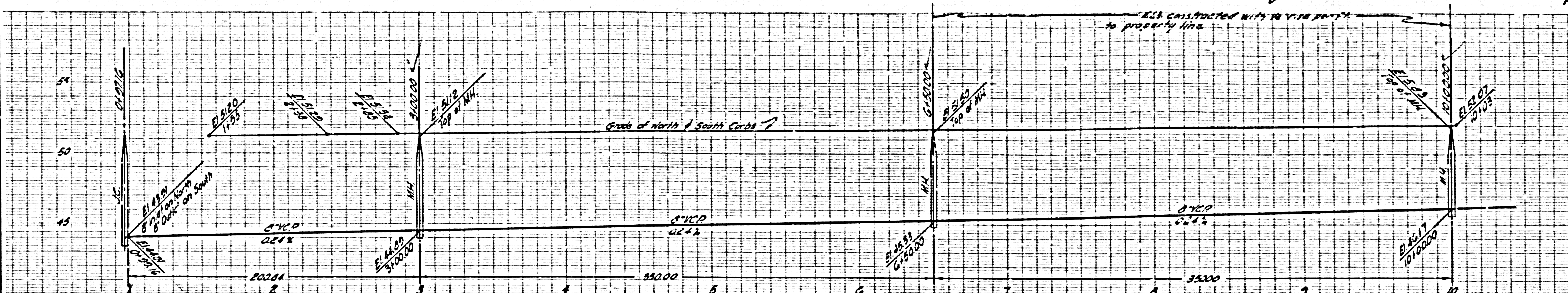
23,583



AREA

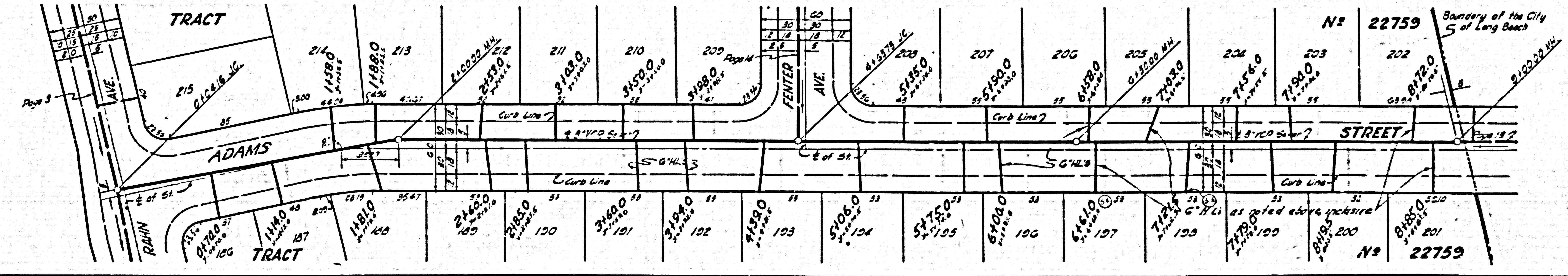
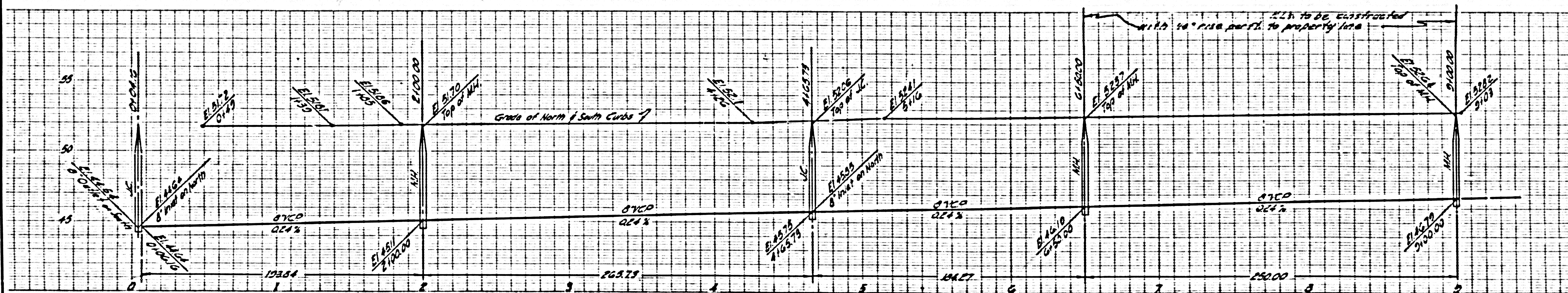
NO CHARGE FOR CONNECTIONS

23,584



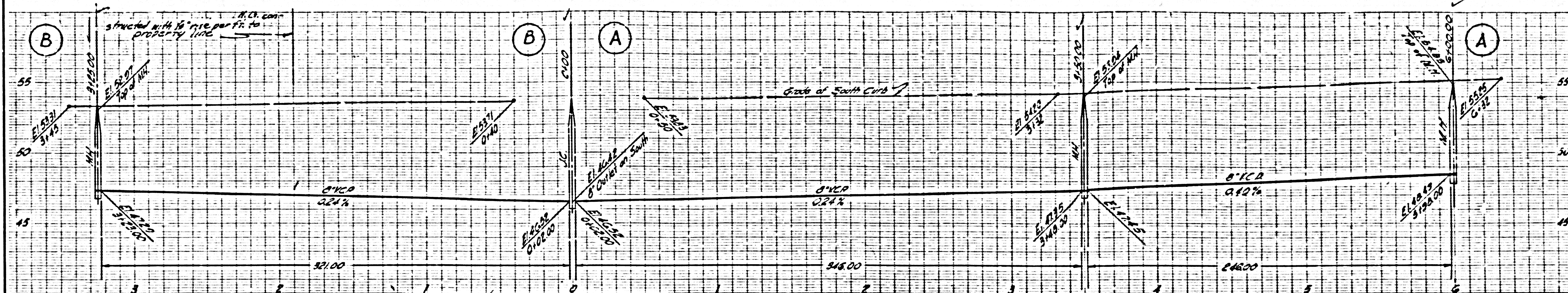
NO CHARGE FOR CONNECTIONS

23,585



SEE NOTES ON THIS PAGE REGARDING CONNECTIONS

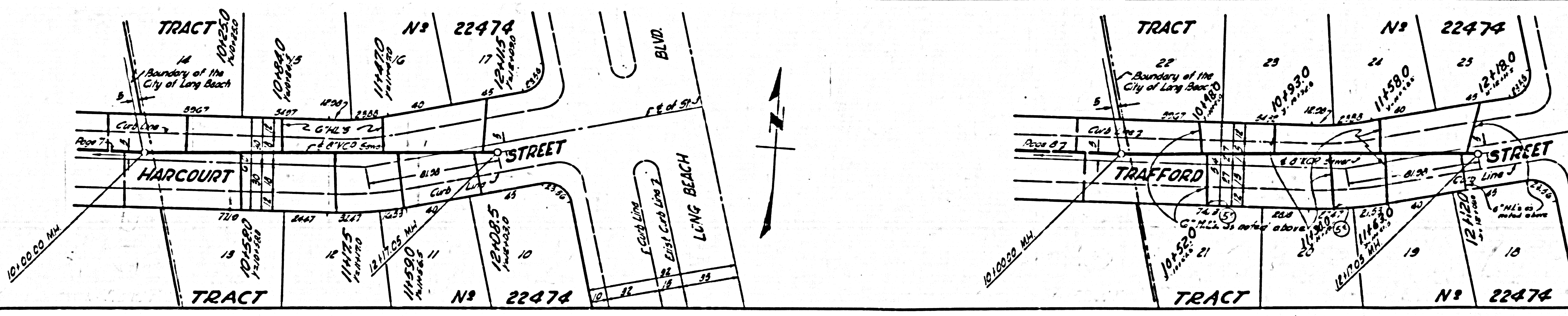
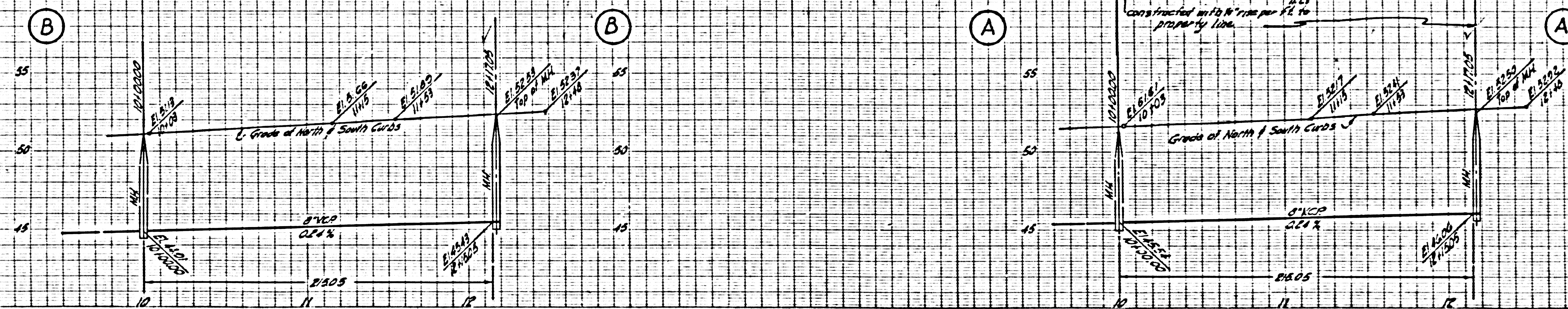
23,586



TRACT		ISSUE NO PERMITS TO THIS SIDE SERVED BY CITY OF LONG BEACH SEWERS																				TRACT																																																				
26	27	28	29	30	31	32	33	34	35	36	37	38	39	40	41	42	43	44	45	46	47	48	49	50	51	52	53	54	55	56	57	58	59	60	61	62	63	64	65	66	67	68	69	70	71	72	73	74	75	76	77	78	79	80	81	82	83	84	85	86	87	88	89	90	91	92	93	94	95	96	97	98	99	100
TRACT		NO CHARGE FOR CONNECTIONS																				TRACT																																																				

ALL HOUSE SEWER PERMITS ON THIS PAGE TO BE ISSUED BY CITY OF LONG BEACH

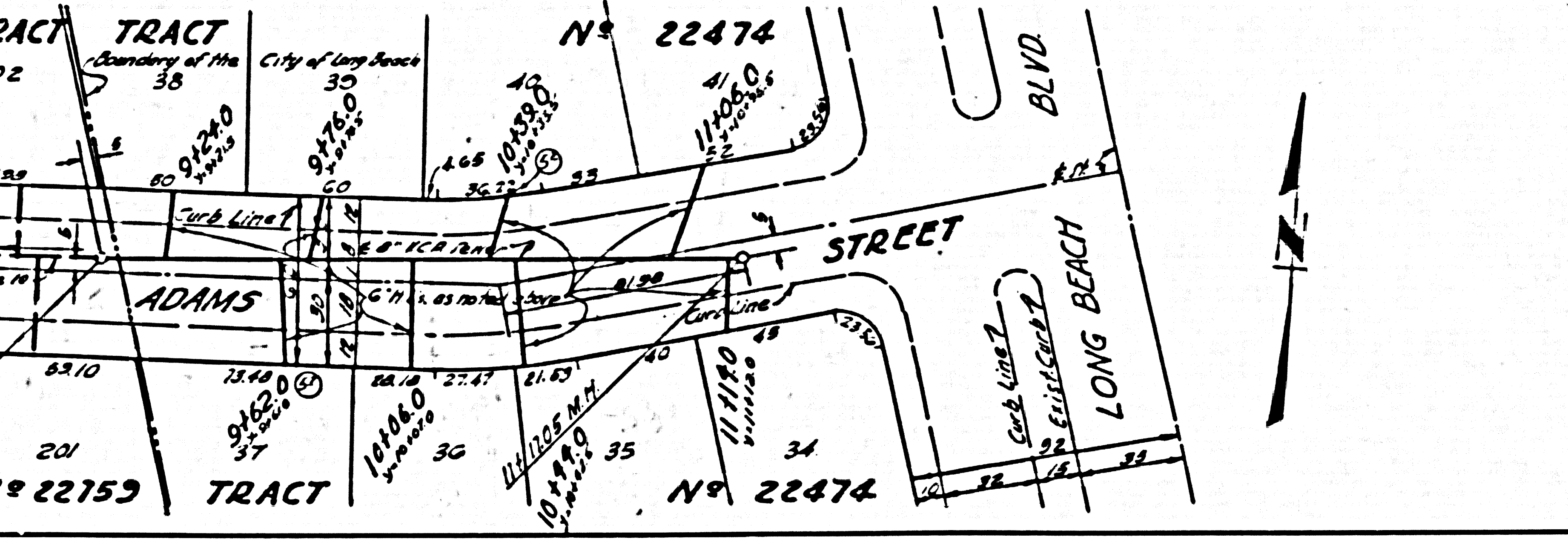
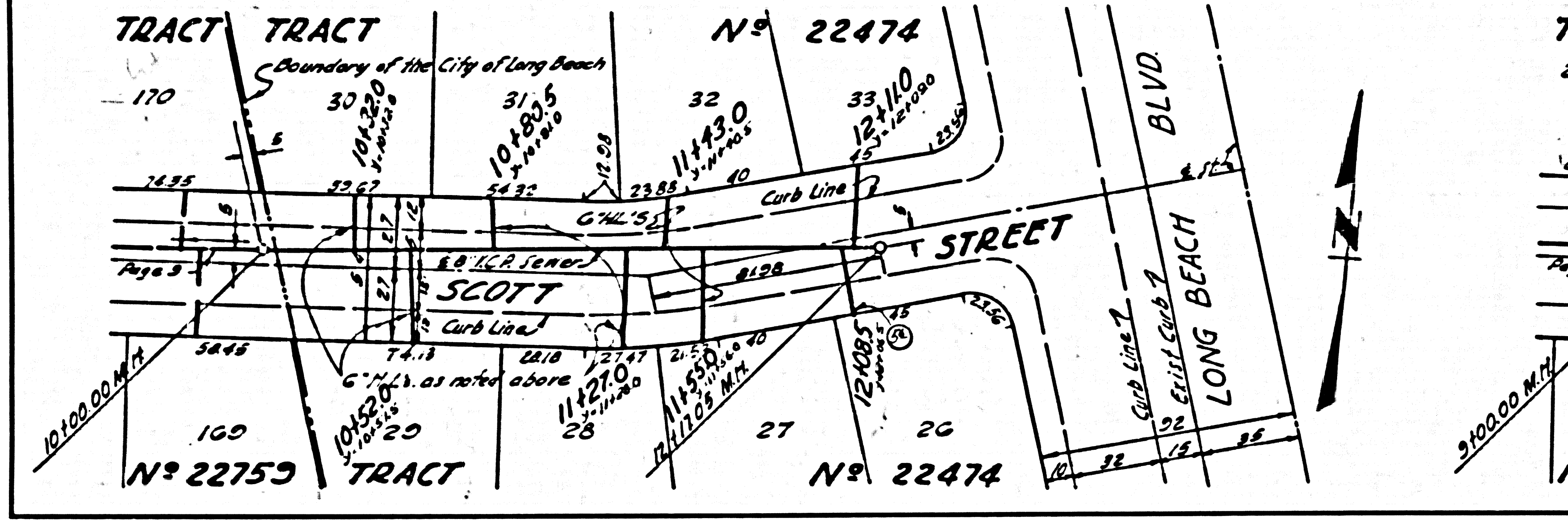
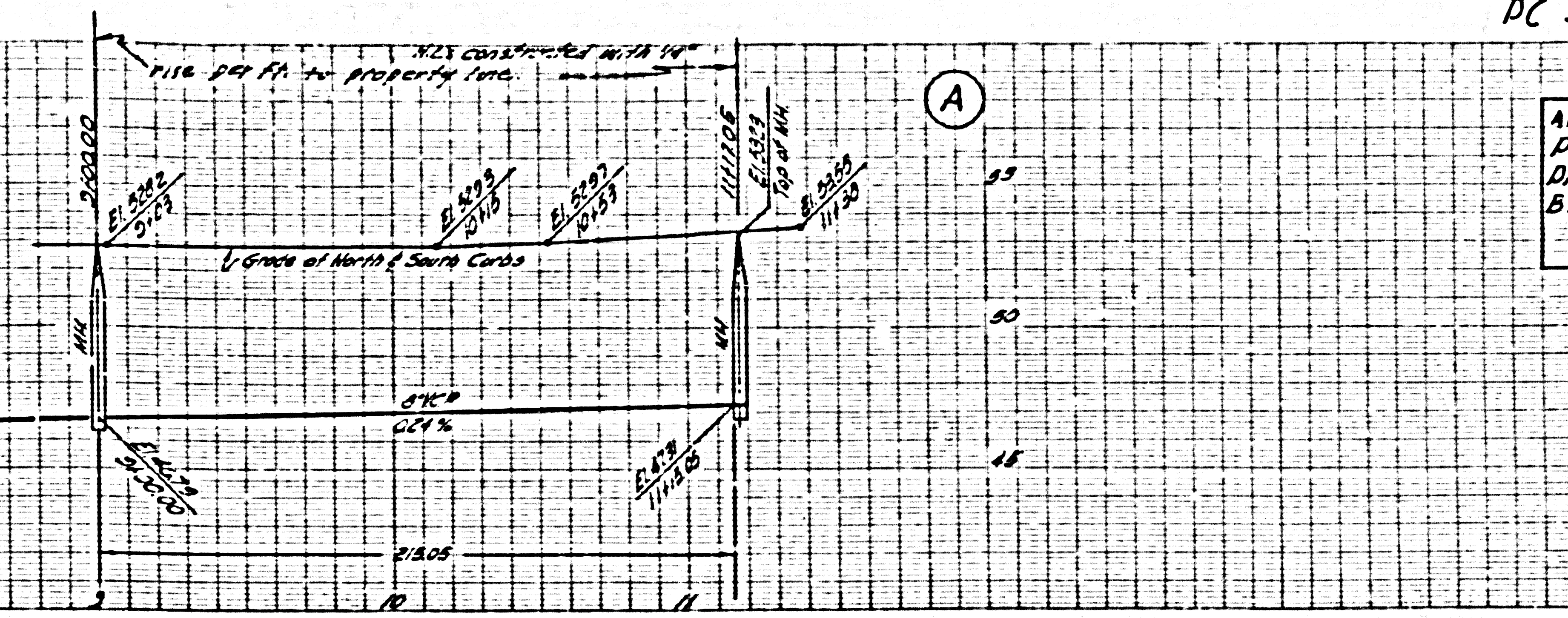
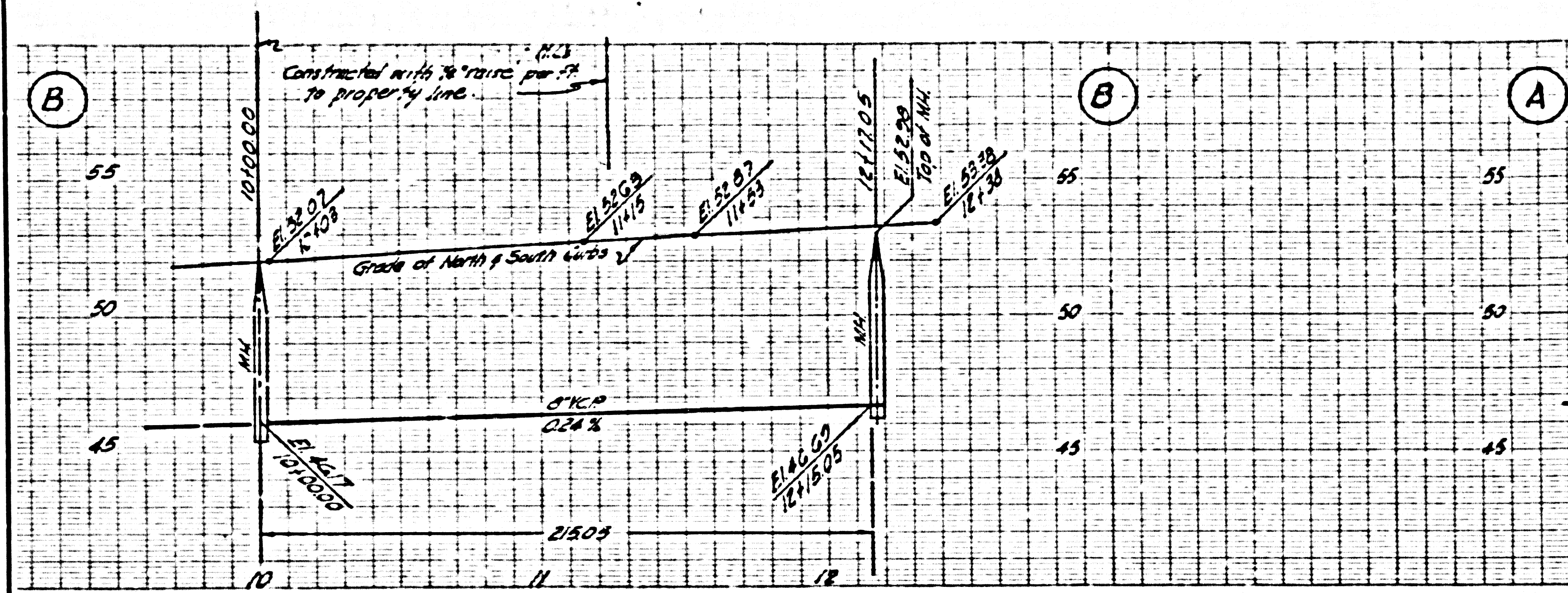
23,587



PC 3974

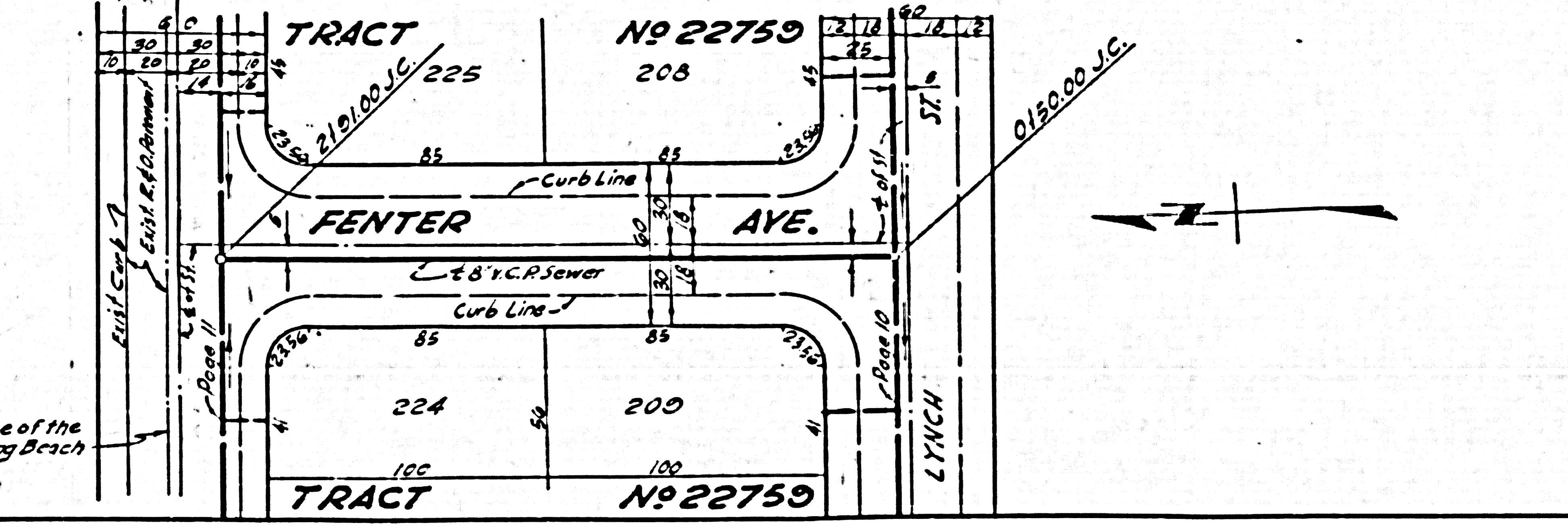
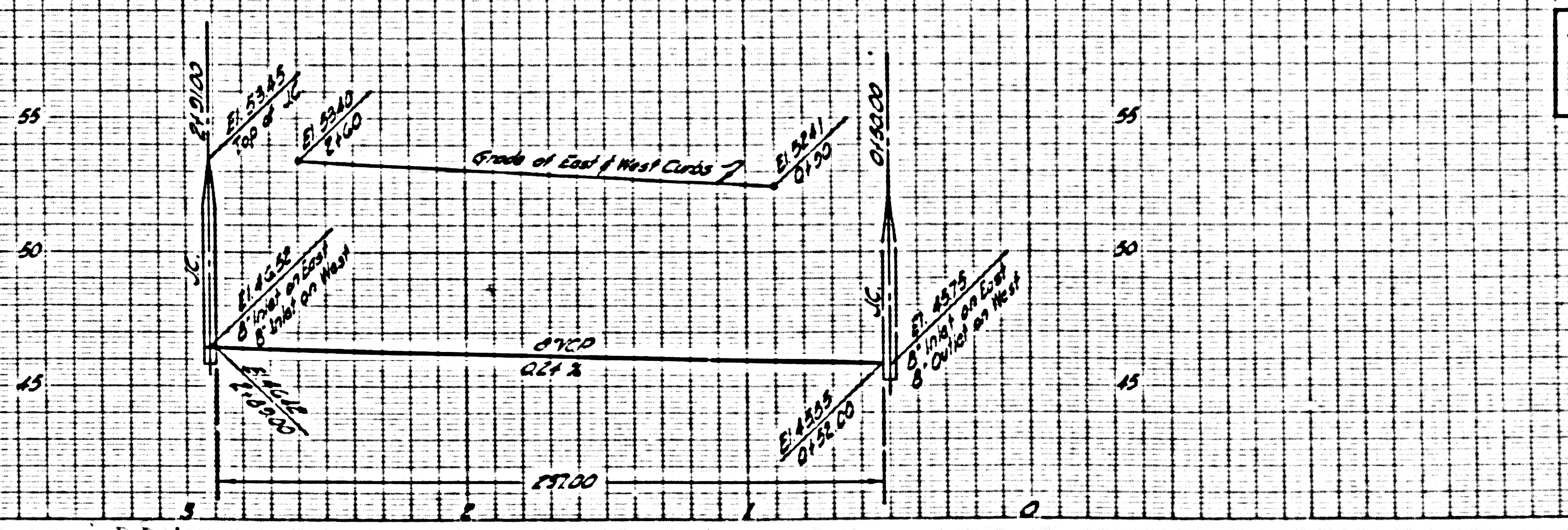
ALL HOUSE SEWER PERMITS FOR THIS PAGE TO BE ISSUED BY CITY OF LONG BEACH

23,588



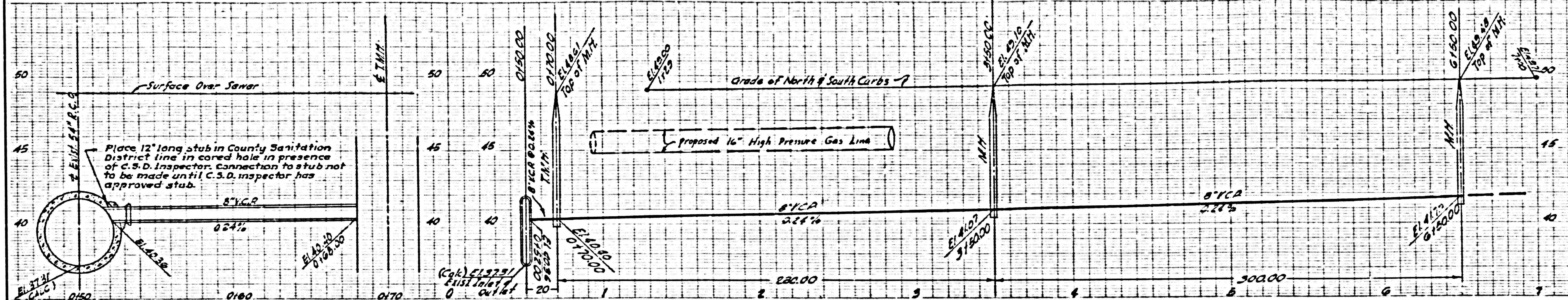
NO CHARGE FOR CONNECTIONS

23,589

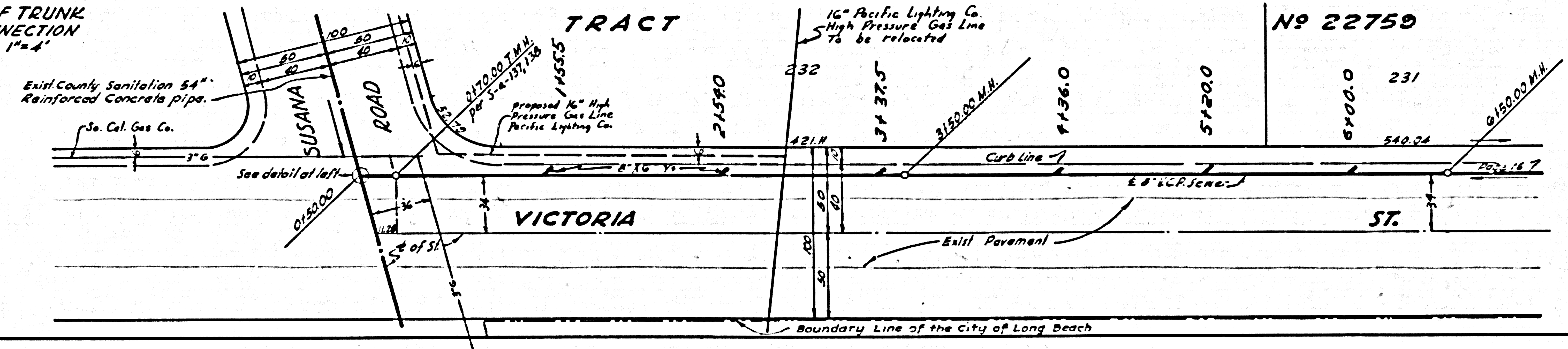


NO CHARGE FOR CONNECTIONS

23,590

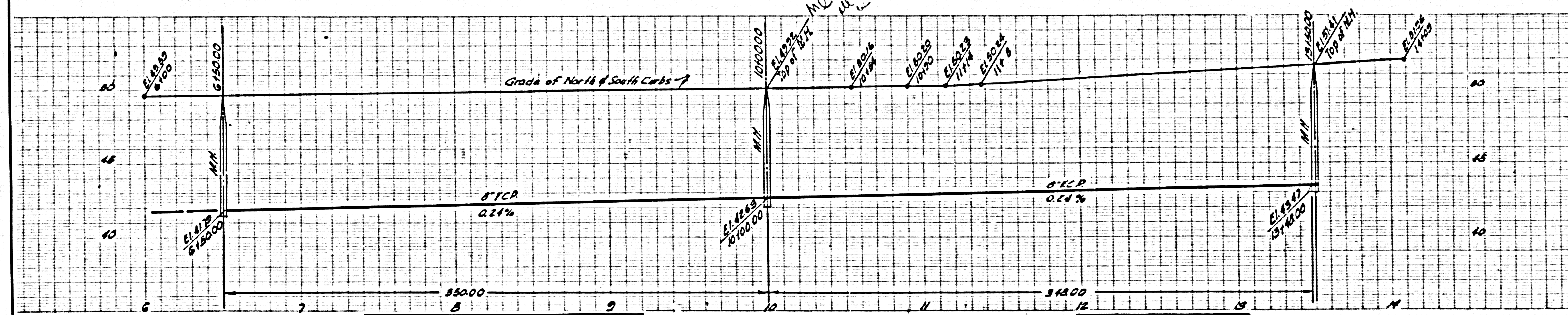


DETAIL OF TRUNK CONNECTION SCALE 1"=4'



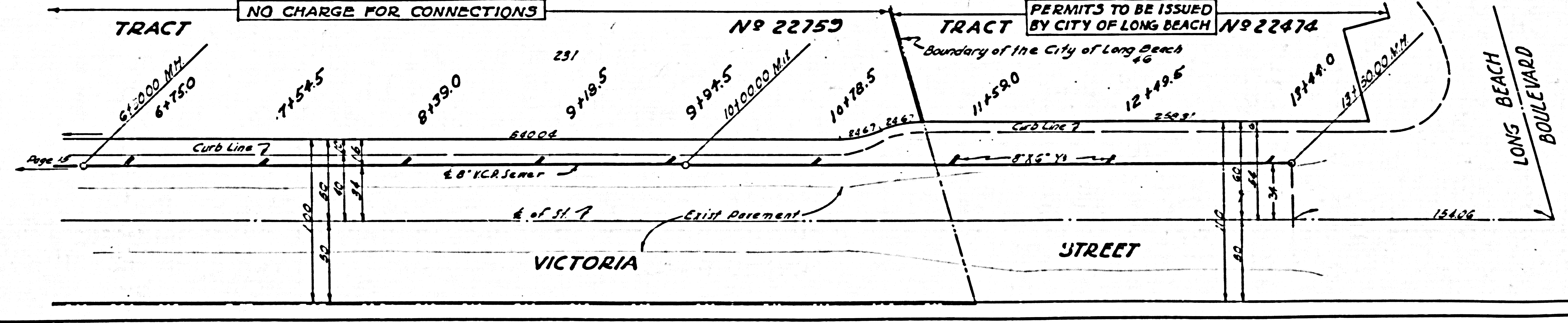
SEE NOTES ON THIS PAGE REGARDING CONNECTIONS

23,591



NO CHARGE FOR CONNECTIONS

PERMITS TO BE ISSUED BY CITY OF LONG BEACH



LONG BEACH BOULEVARD