

WHITTIER BLDG. DIST. NO. 11

PROFILE ALIGNMENT AND GRADE OF **P.C. 3976**  
**SANITARY SEWERS** PAGE **1**  
 TO BE CONSTRUCTED IN

**TRACT No. 19509**

**PRIVATE CONTRACT NO. 3976**

W.S. 36

5 SHEETS, 10 PAGES (23,480)

SCALE: 1" = 40' HORIZ. 1" = 4' VERT. MARCH, 1958

PREPARED IN THE OFFICES OF

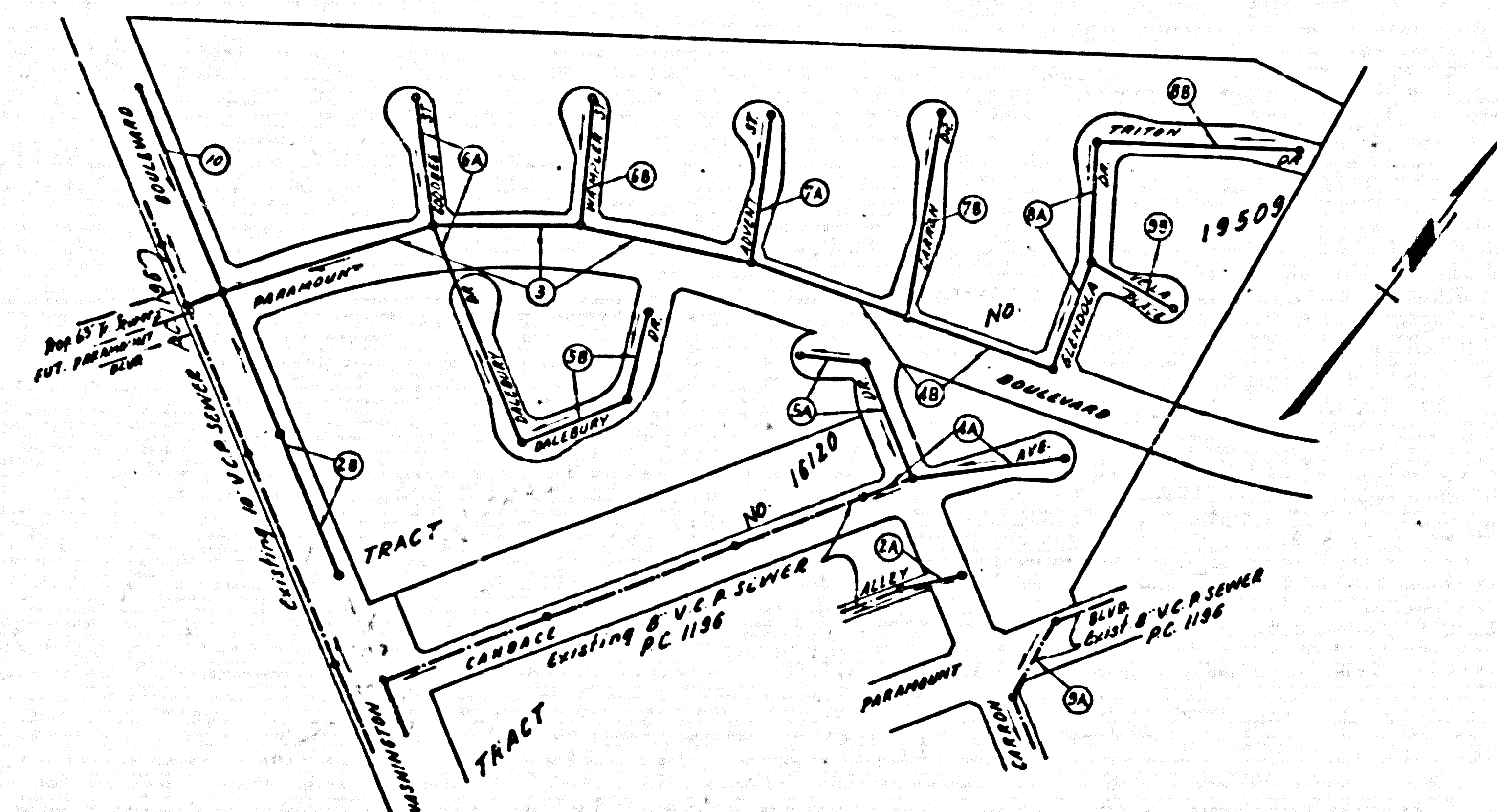
**KEMMERER ENGINEERING CO. INC.**

By *J. C. Johnson* REG. C. E. NO. 6244

FOR LEGEND SEE PLAN NO. S-A 64

**NOTE:**  
 GRADES TO WHICH THIS IMPROVEMENT IS TO BE CONSTRUCTED ARE SHOWN ON PLANS AND PROFILES. GRADE POINTS FOR TOP OF CURB, CENTER LINE OF STREETS, OR CENTER LINE OF ALLEYS ARE SHOWN BY CIRCLES ON PROFILES AT ALL POINTS BETWEEN DESIGNATED POINTS. THE GRADE SHALL BE ESTABLISHED AS TO CONFORM TO A STRAIGHT LINE DRAWN BETWEEN SAID DESIGNATED POINTS.  
 ELEVATIONS ARE IN FEET ABOVE U.S.C. & G.S. MEAN LEVEL, UNLESS OTHERWISE NOTED.  
 THIS DRAWING AND THE DATA HEREON ARE HEREBY MADE A PART OF THE SPECIFICATIONS.  
 WORK SHALL BE CONSTRUCTED ACCORDING TO SPECIFICATIONS ON FILE IN THE OFFICE OF THE COUNTY ENGINEER AND SHALL BE PROSECUTED ONLY IN THE PRESENCE OF THE COUNTY ENGINEER.  
 BEFORE WORK CAN BE STARTED THE CONTRACTOR MUST OBTAIN A PERMIT TO EXCAVATE IN COUNTY STREETS FROM THE E. & COUNTY ENGINEER. THE PERMIT MUST BE OBTAINED FROM THE COUNTY ENGINEER, ROOM 324 PAVAN AMERICAN BLDG., NO. 315 S.O. BROADWAY, SUFFICIENT TO COVER THE COST OF CONSTRUCTION INSPECTION AND RECORD PLANS.  
 APPROVAL OF THIS PLAN BY THE COUNTY OF LOS ANGELES DOES NOT CONSTITUTE A REPRESENTATION AS TO THE ACCURACY OF THE LOCATION OR OF THE EXISTENCE OR NON-EXISTENCE OF ANY UNDERGROUND UTILITY PIPE, OR STRUCTURE WITHIN THE LIMITS OF THIS PROJECT. THIS NOTE APPLIES TO ALL PAGES.  
 IF WORK IS TO BE DONE IN A STATE HIGHWAY, A PERMIT MUST BE OBTAINED FROM THE STATE OF CALIFORNIA, DIVISION OF HIGHWAYS, 120 SOUTH SPRING STREET.

**COUNTY OF LOS ANGELES, CALIFORNIA**  
 APPROVED, JOHN A. LAMBE, COUNTY ENGINEER  
 APPROVED, A. M. RAWIN, CHIEF ENGINEER  
 BY *J. C. Johnson* REG. C. E. NO. 6244  
 BY *A. M. Rawin* CHIEF ENGINEER  
 CHECKED BY *J. K. Oude* REG. C. E. NO. 5406  
 OFFICE OF COUNTY ENGINEER, 300 C. E. NO. 5406

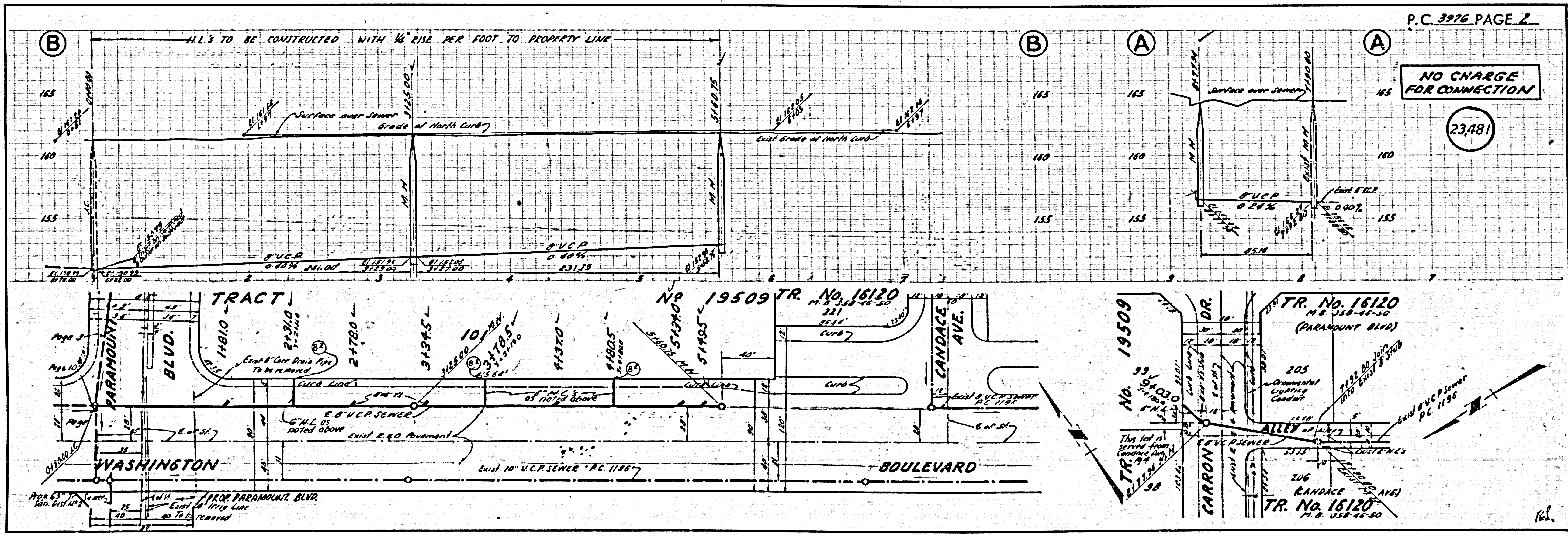


INDEX MAP  
 TRACT No. 19509  
 P.C. 3976 Scale: 1"=200'  
 Rev. 1/12/58

0 P.M. 5' 15" LEAD & BENCH NAIL ON NORTH CURB OF WASHINGTON BLVD. 1 FT. EAST OF E.C.R. AT N.E. CORNER OF CANDACE AVE. WASHINGTON BLVD. E.C.E. 162248

**NO CHARGE FOR CONNECTIONS**  
 1/12/58

checked 9-26-58 *McLaren*



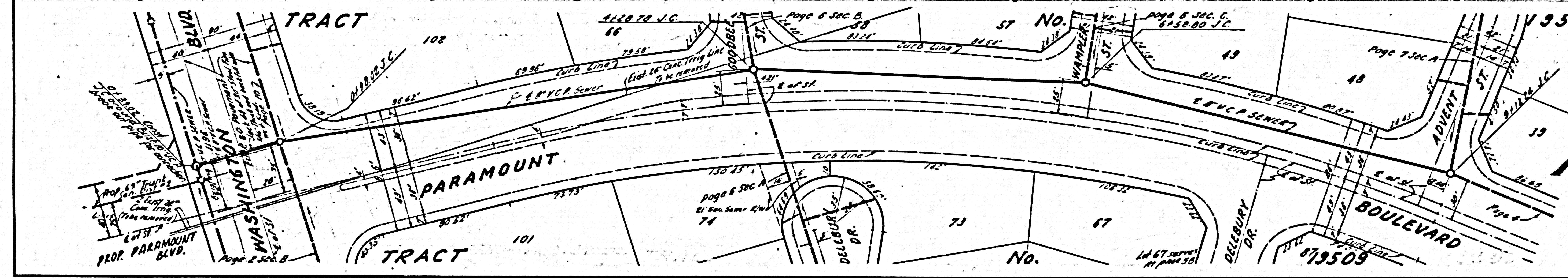
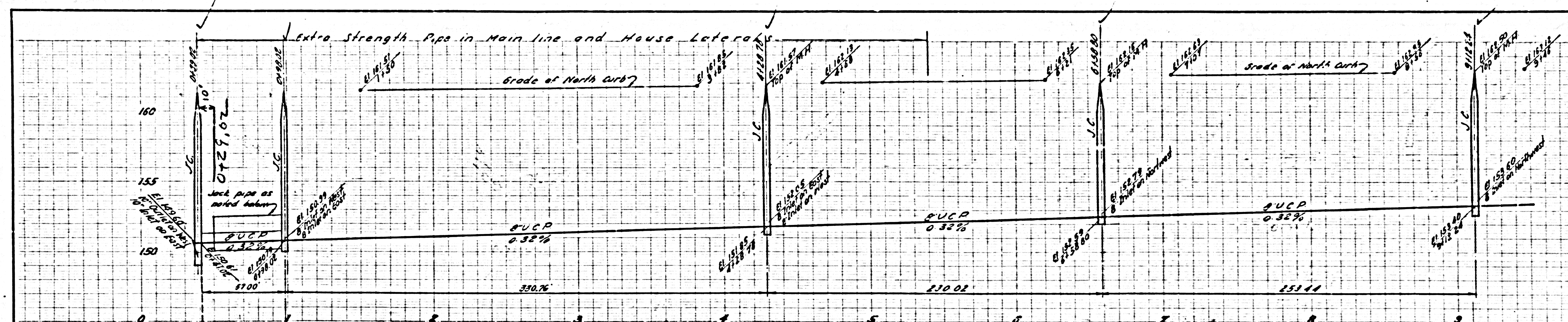
**NO CHARGE FOR CONNECTIONS**

(23,481)

P.C. 3976 PAGE 2

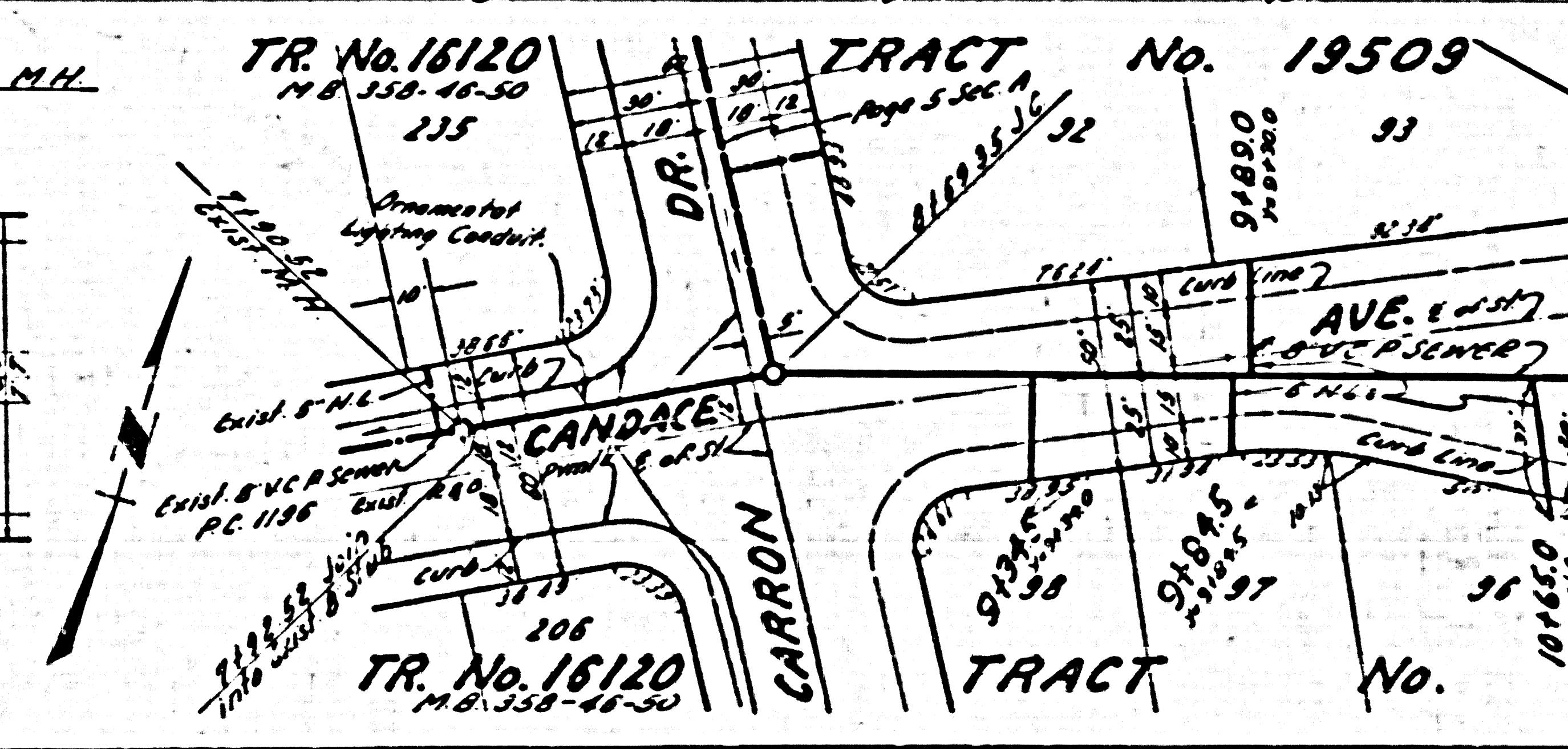
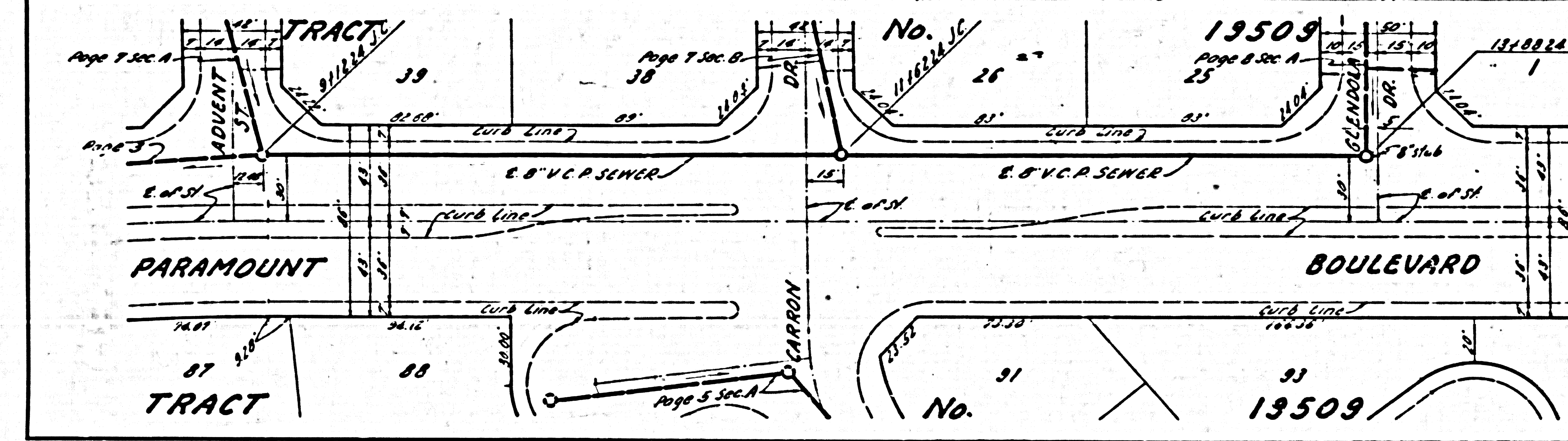
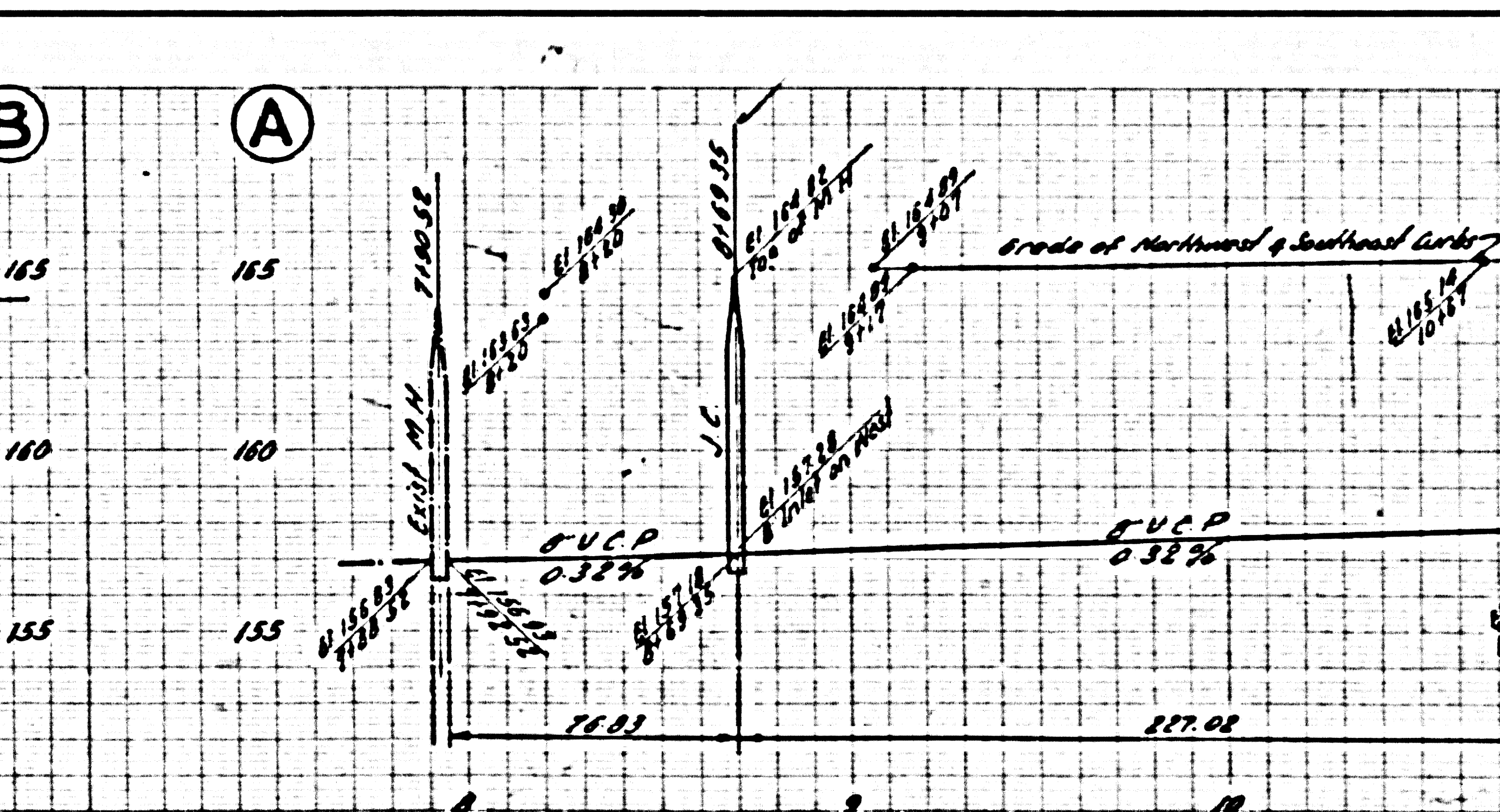
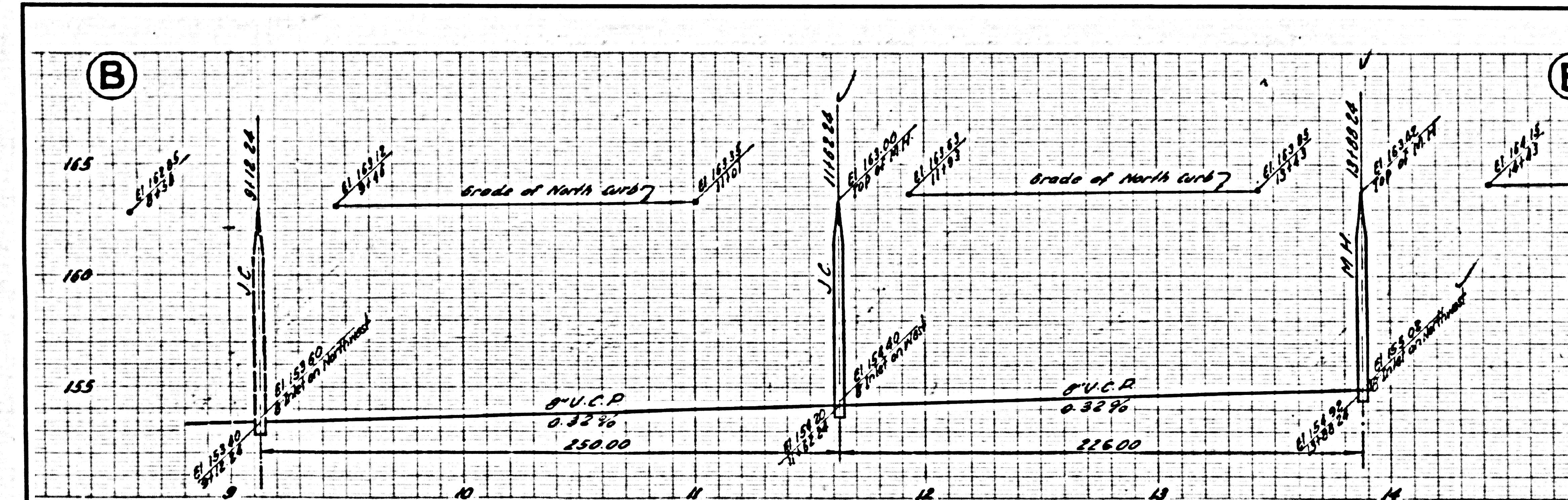
NO CHARGE FOR CONNECTIONS

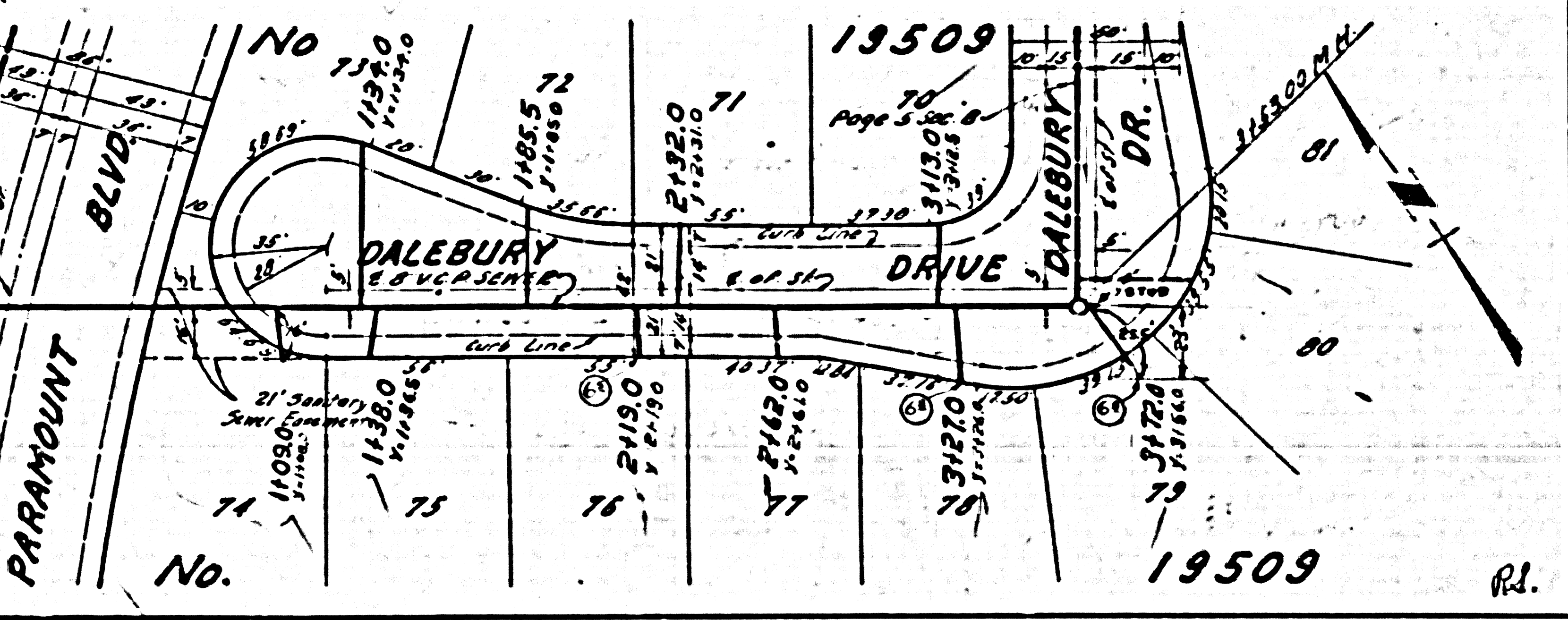
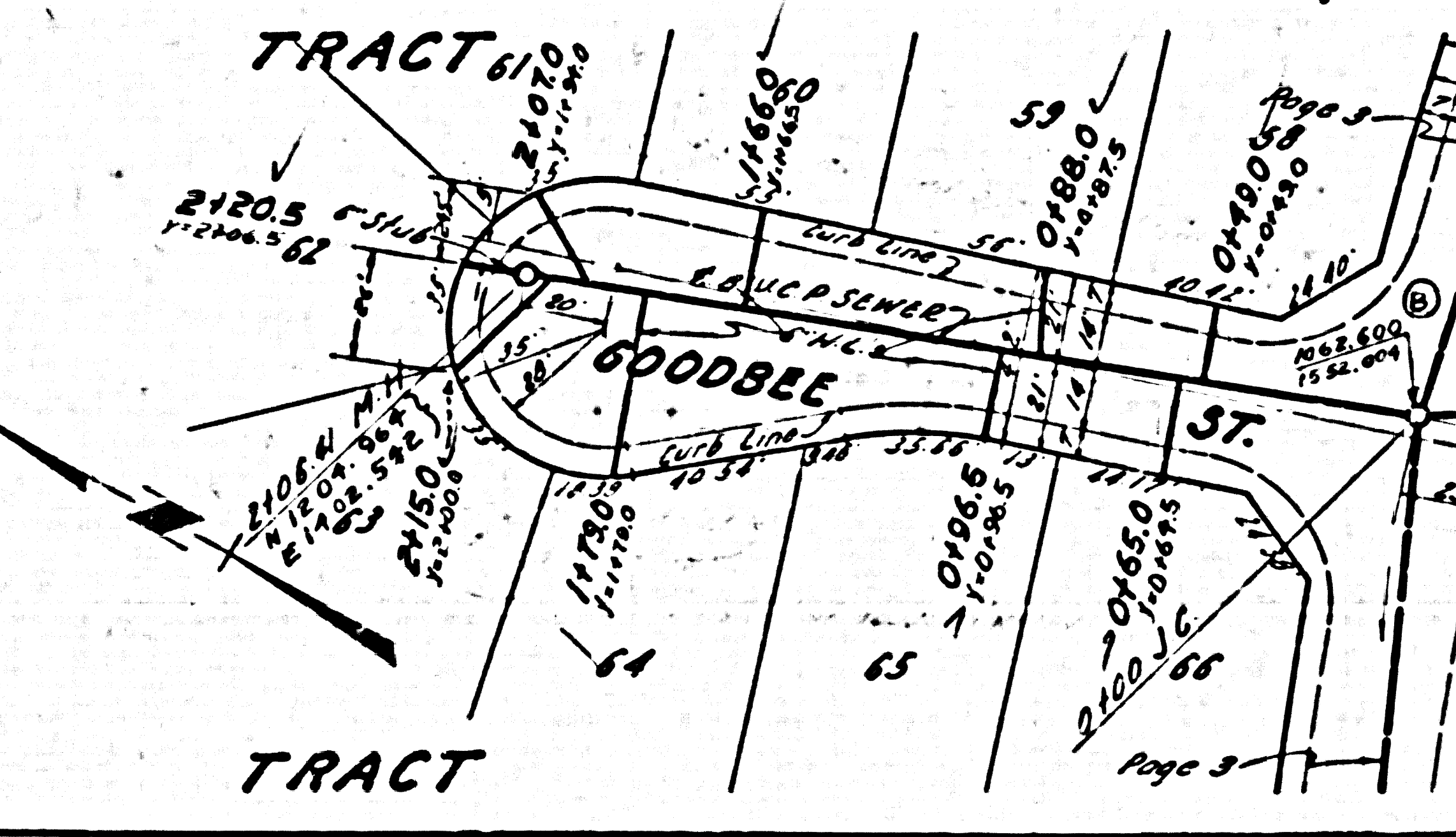
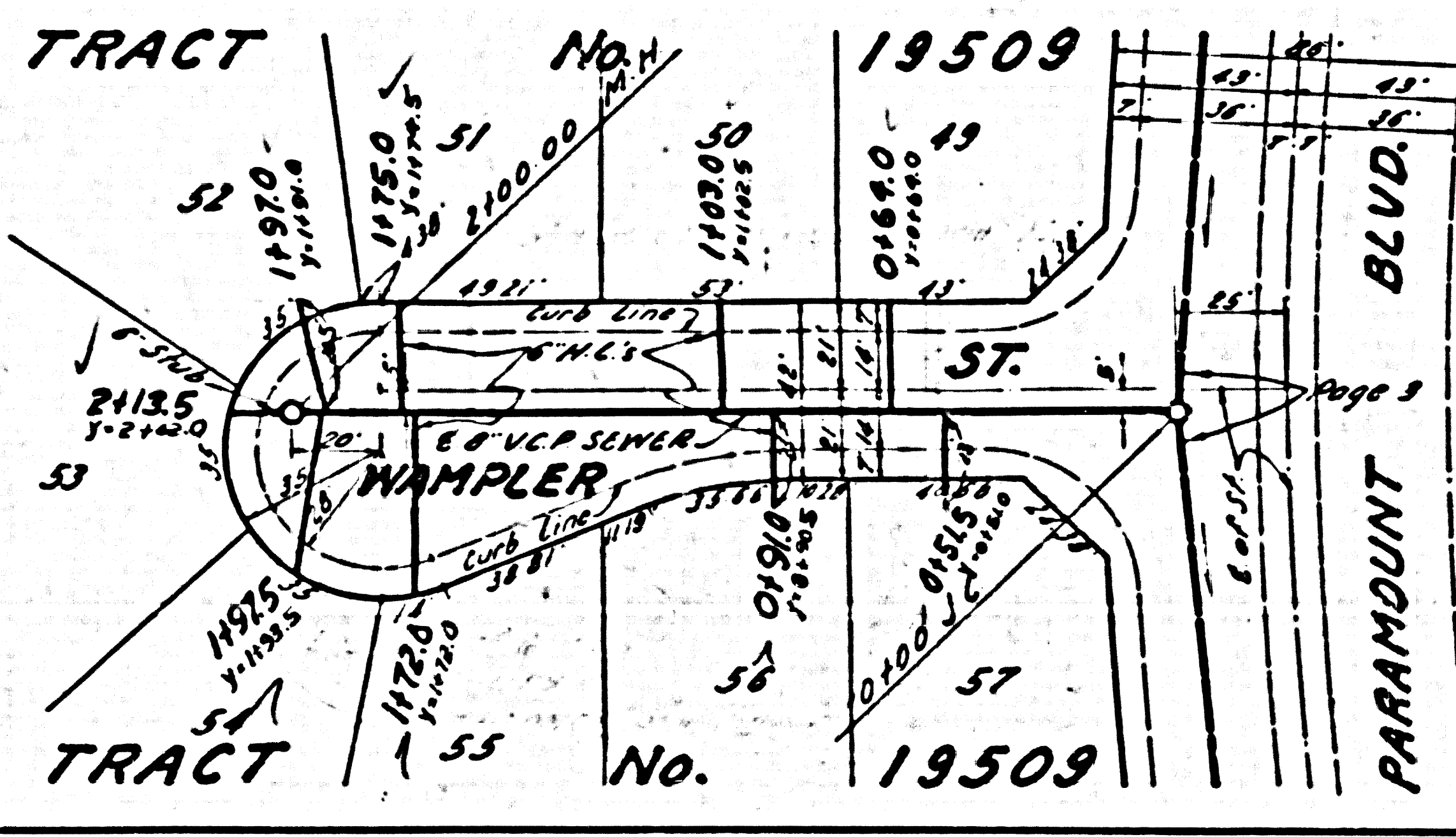
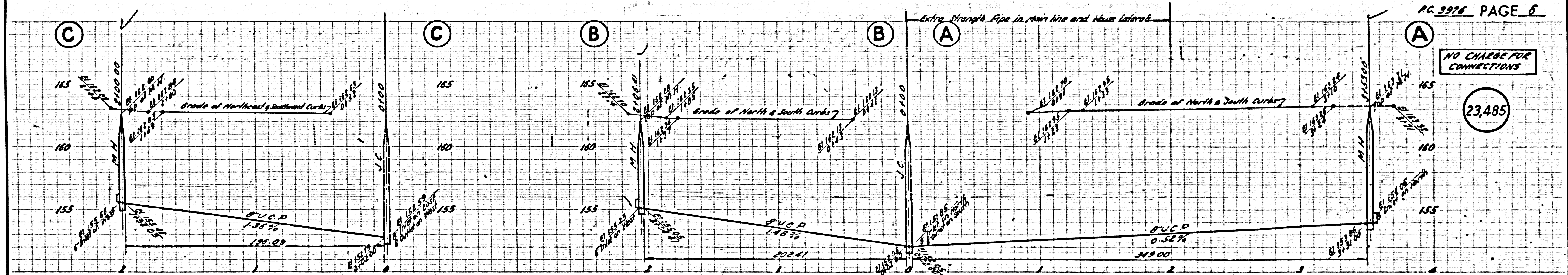
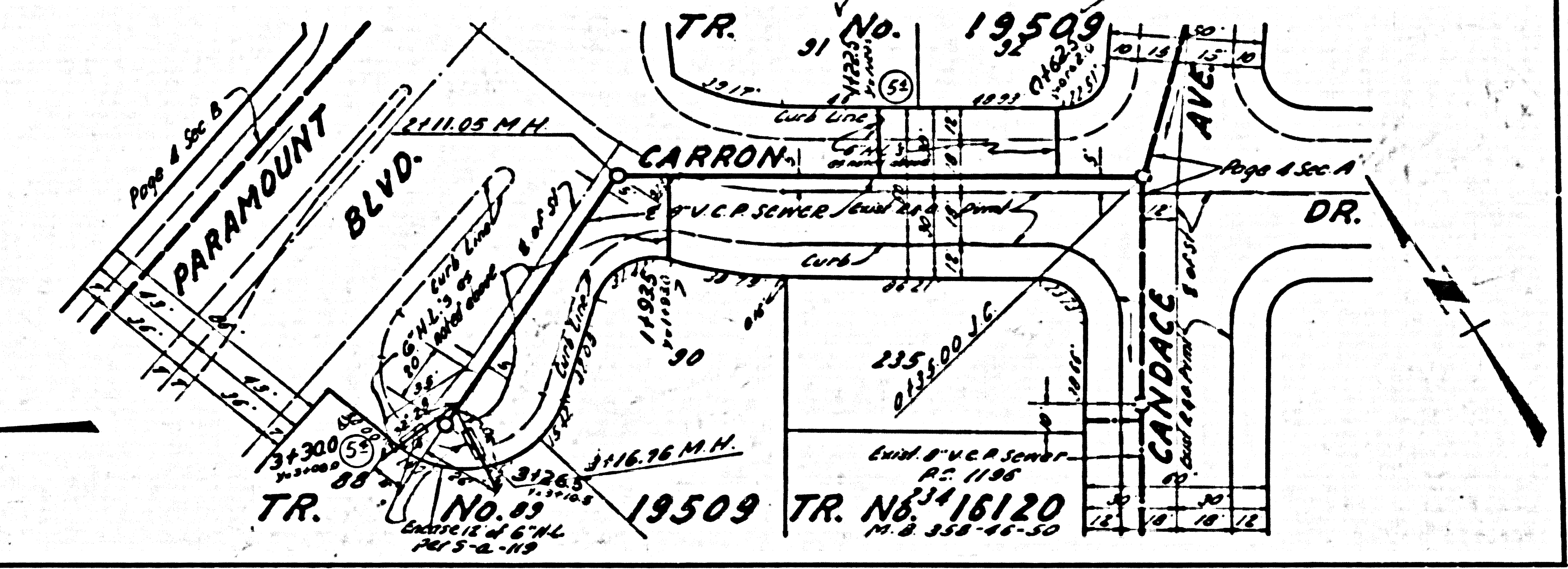
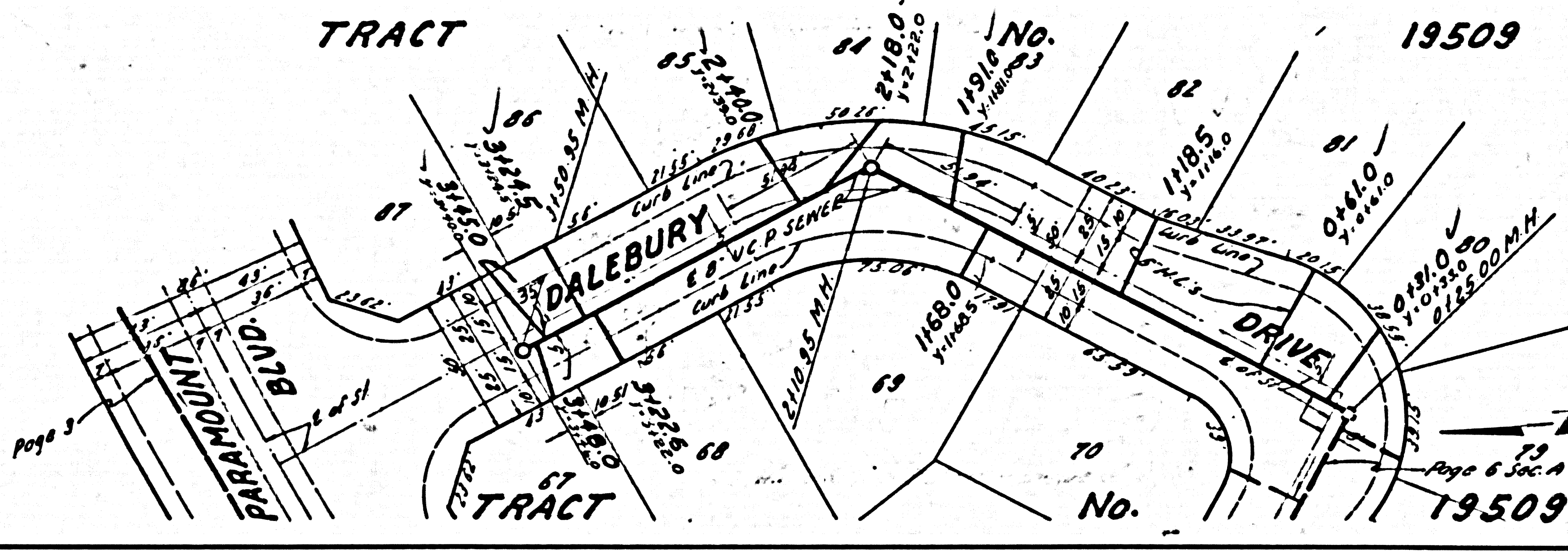
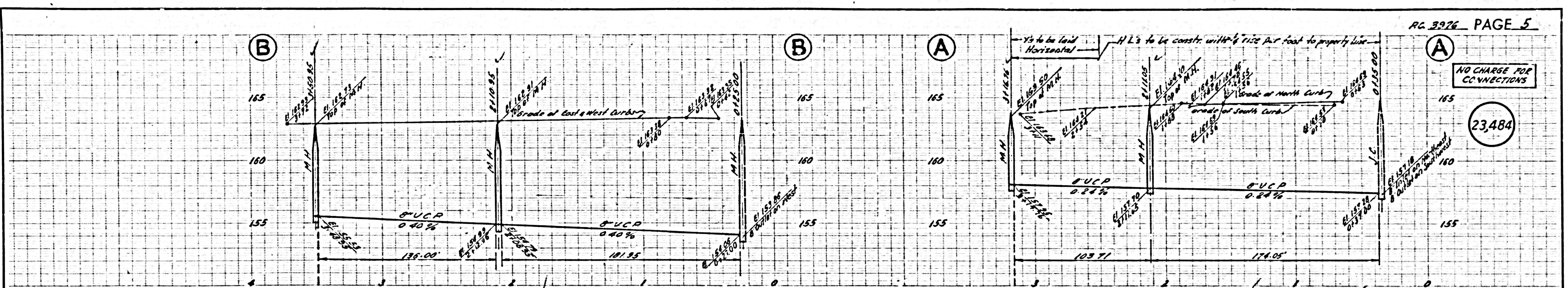
23,482

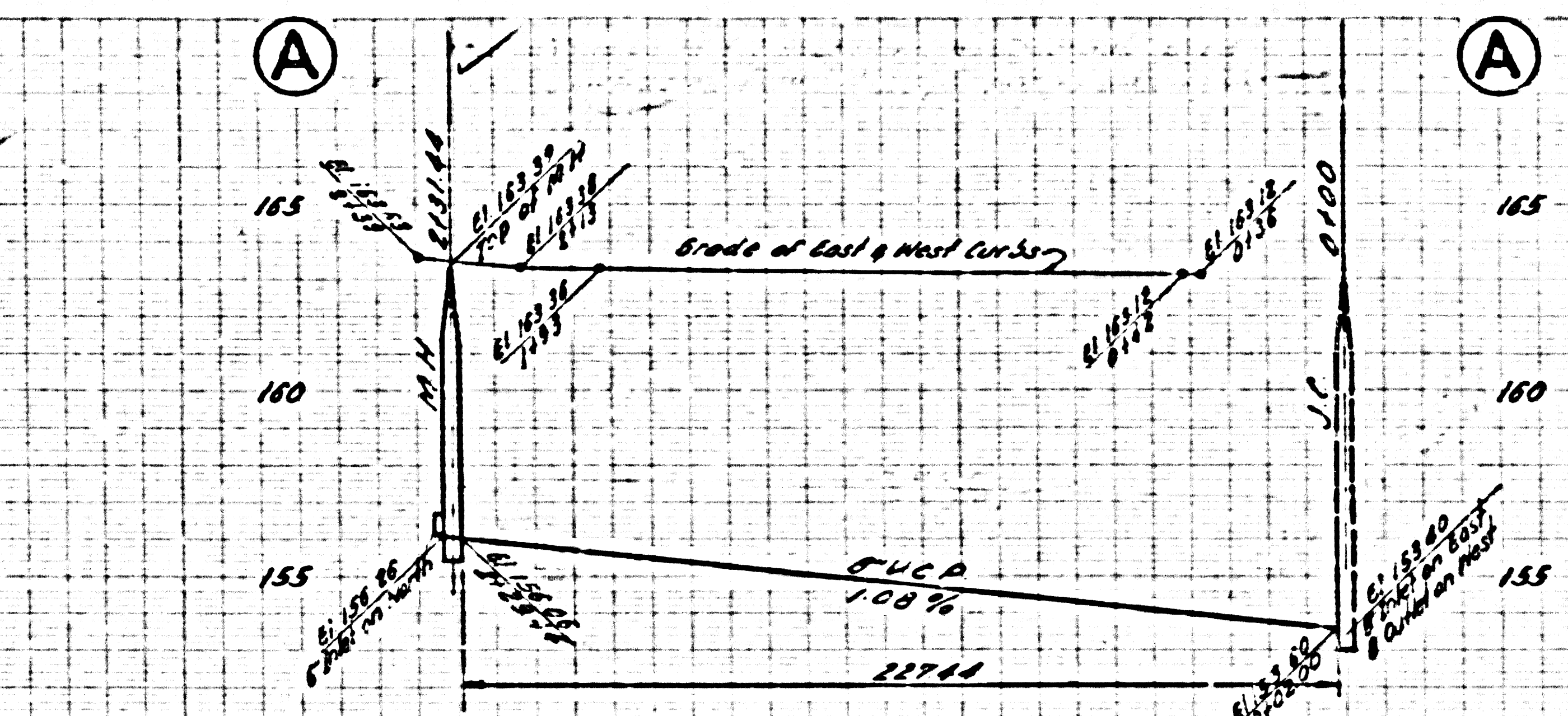
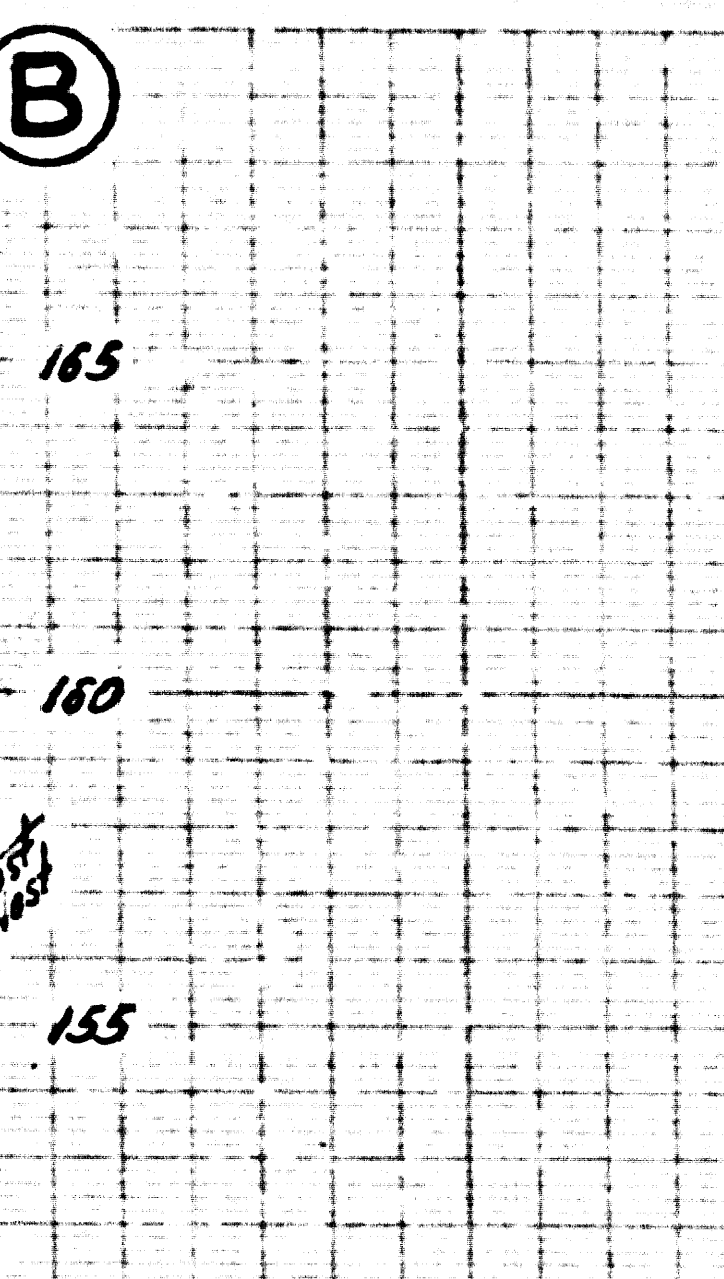
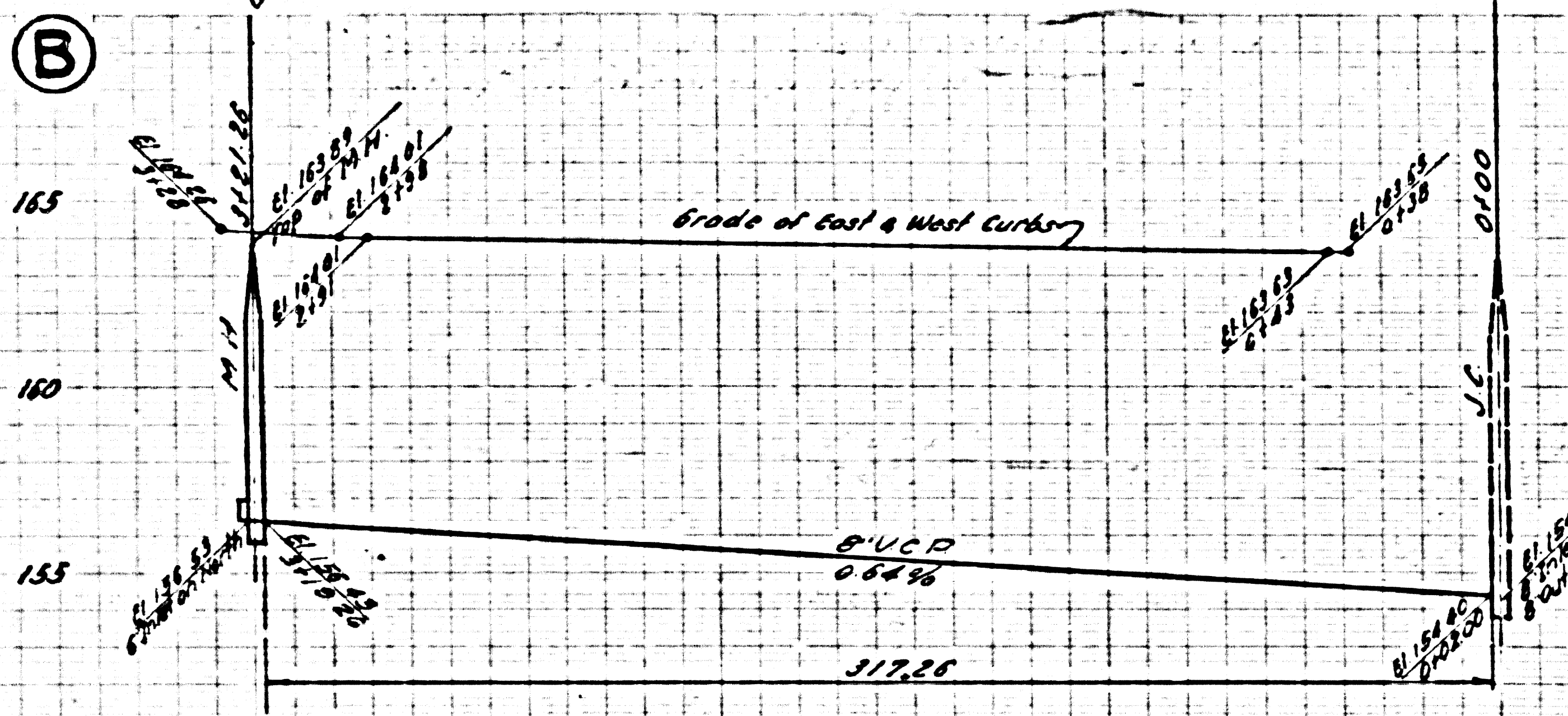


NO CHARGE FOR CONNECTIONS

23,483

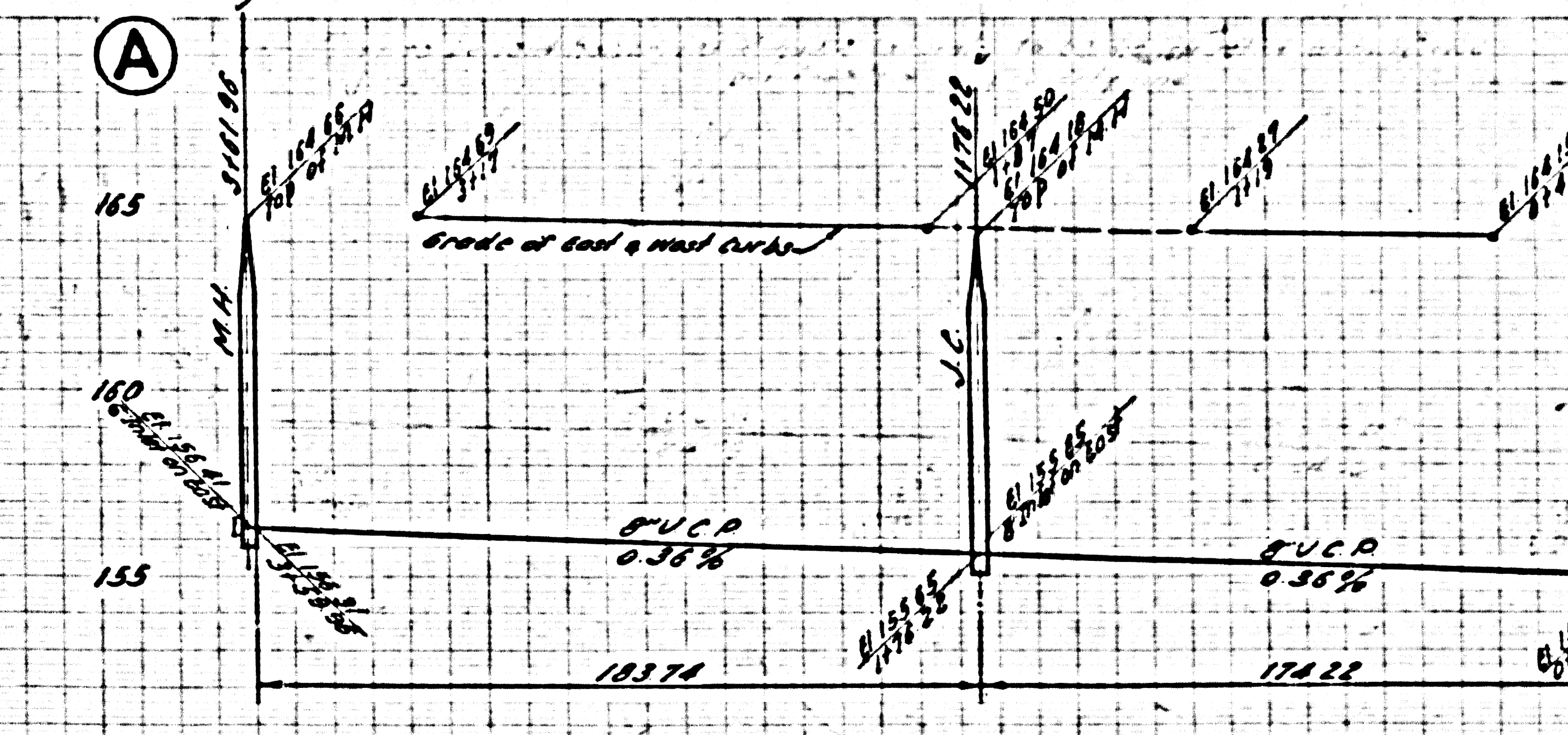
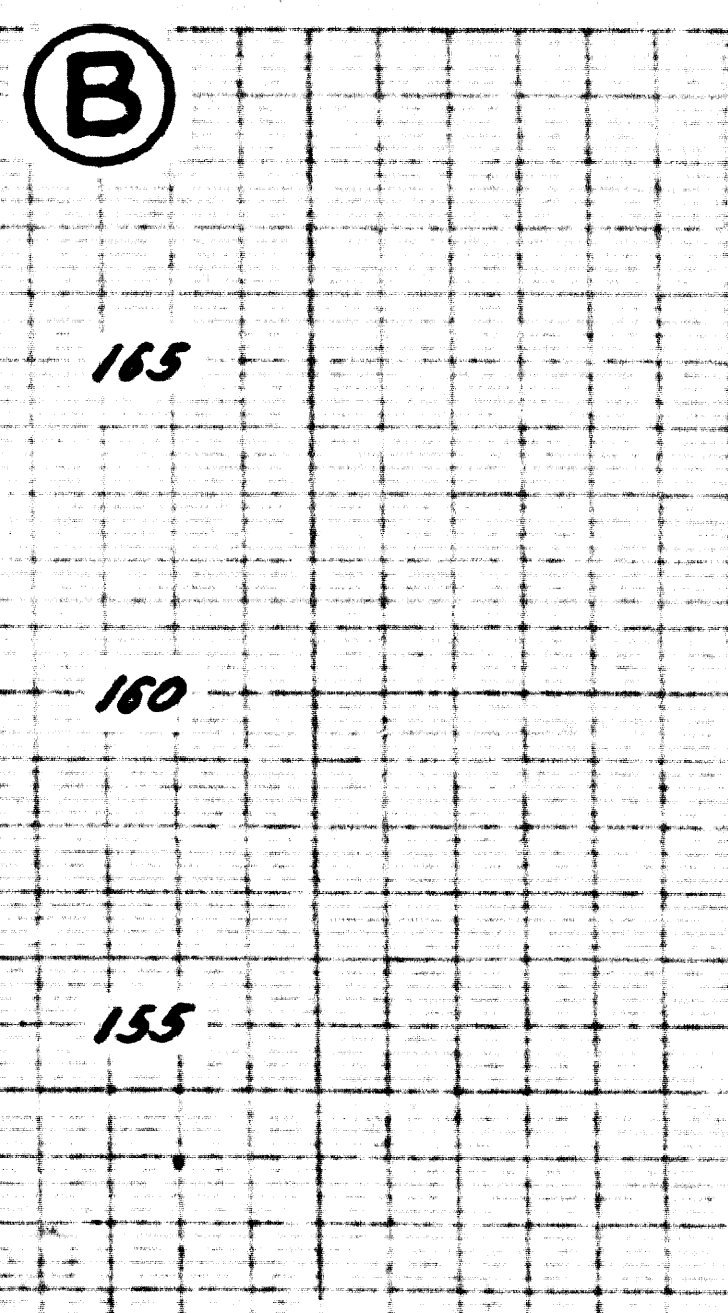
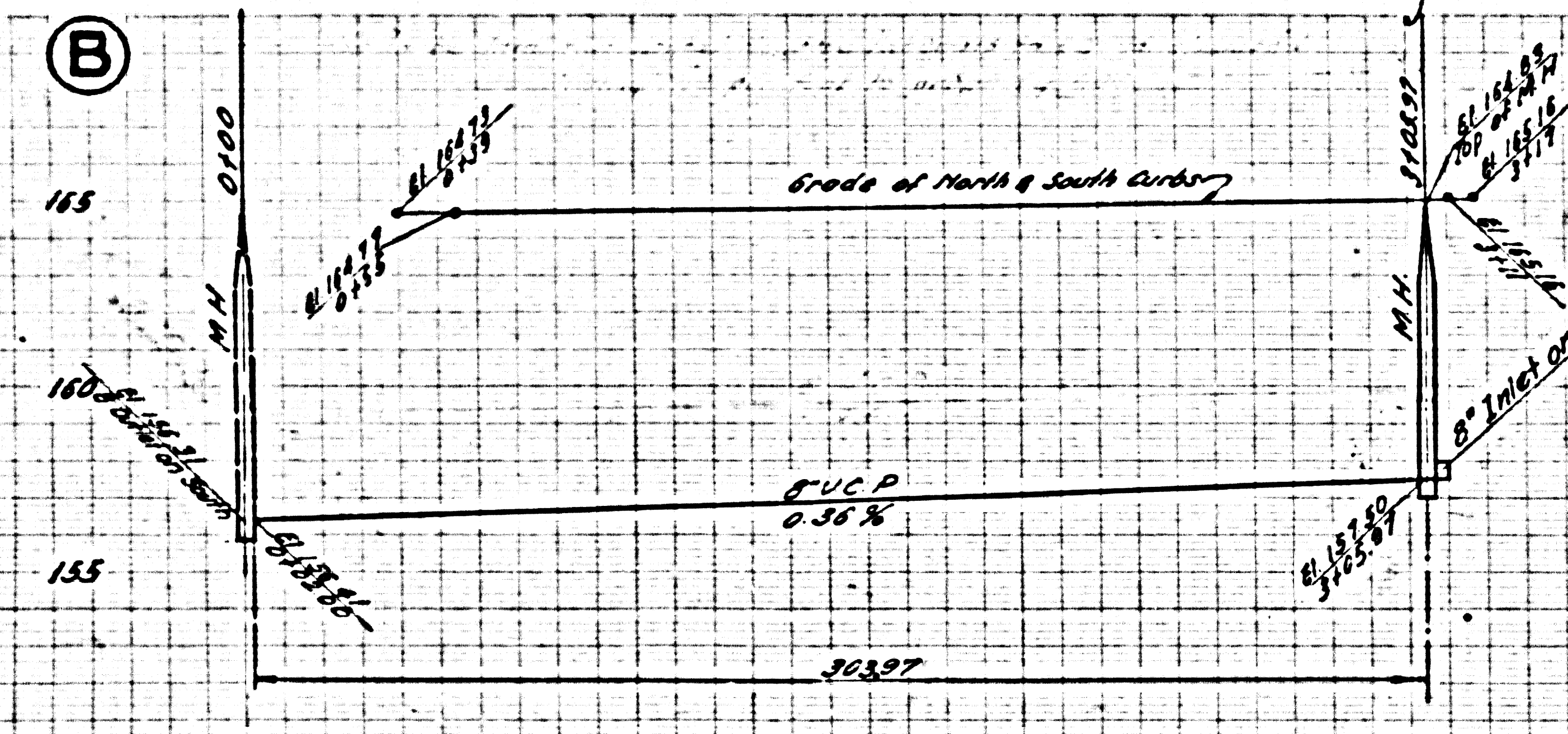
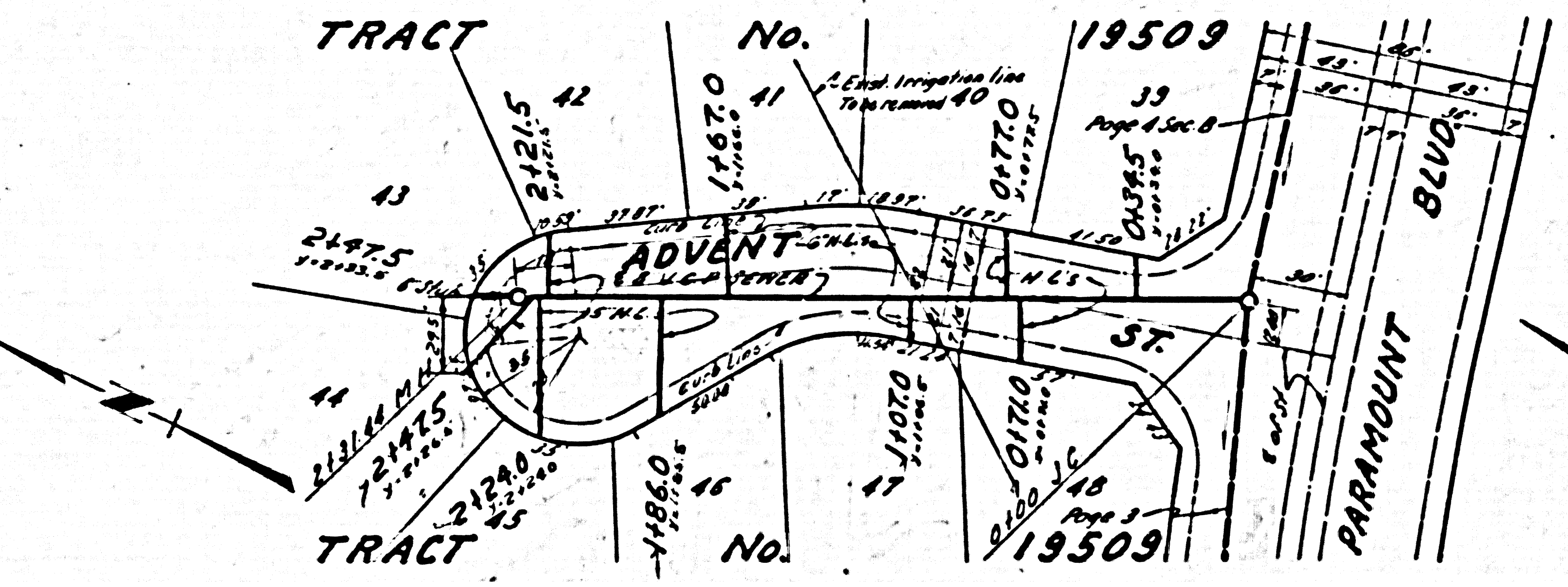
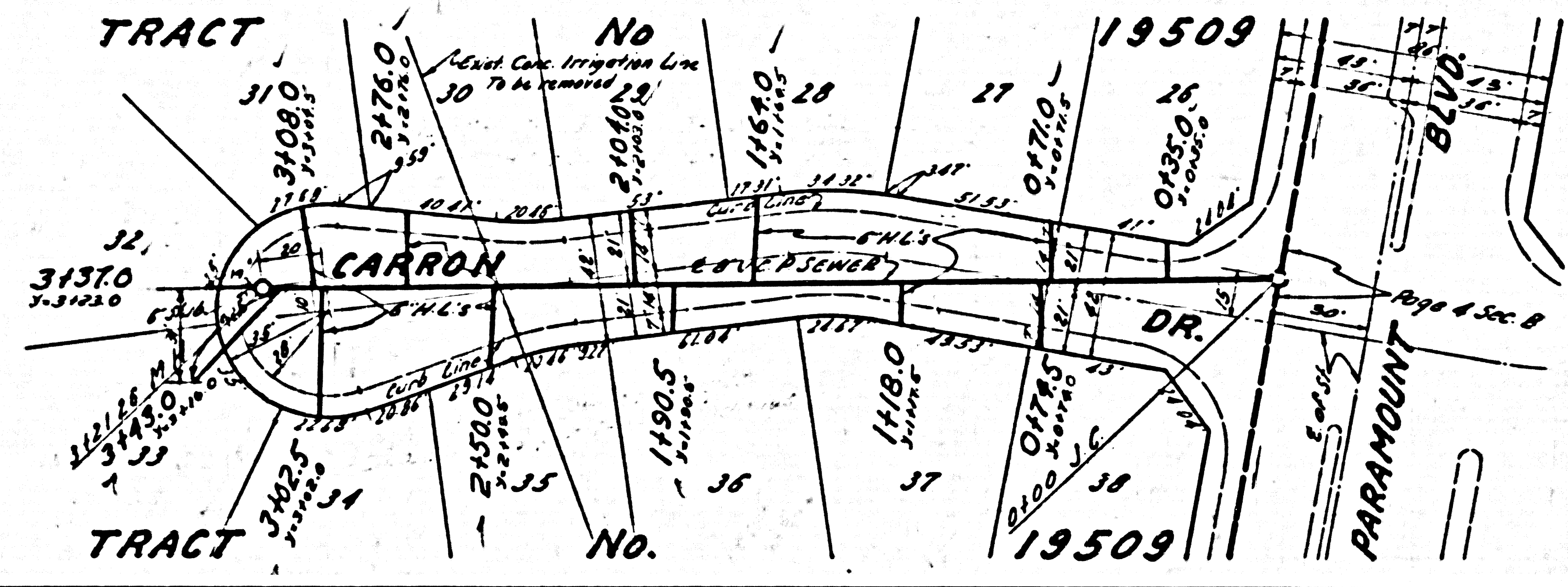






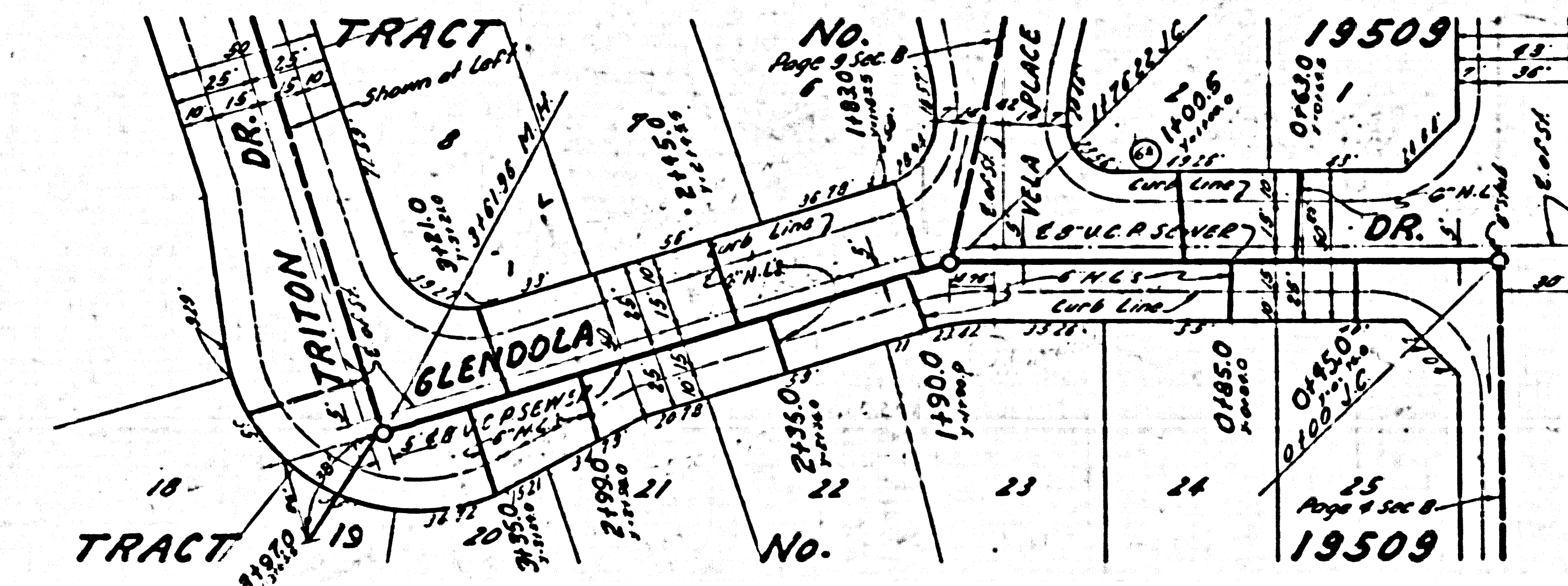
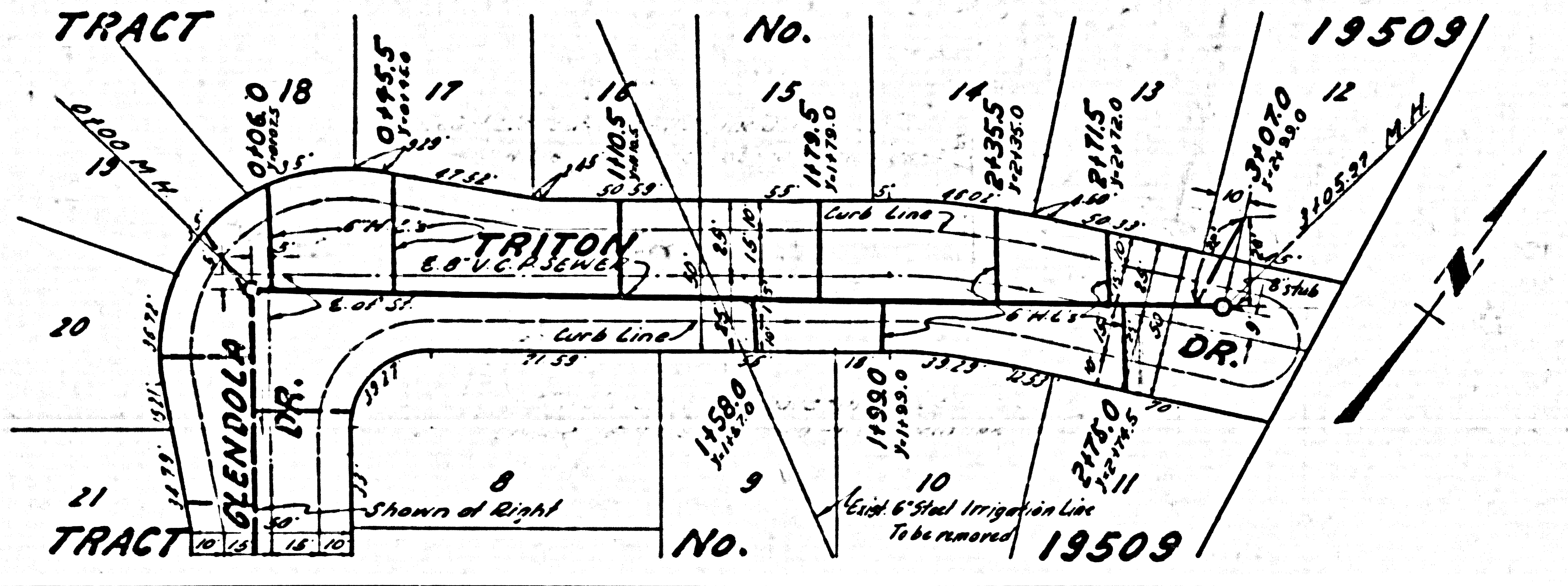
NO CHARGE FOR CONNECTIONS

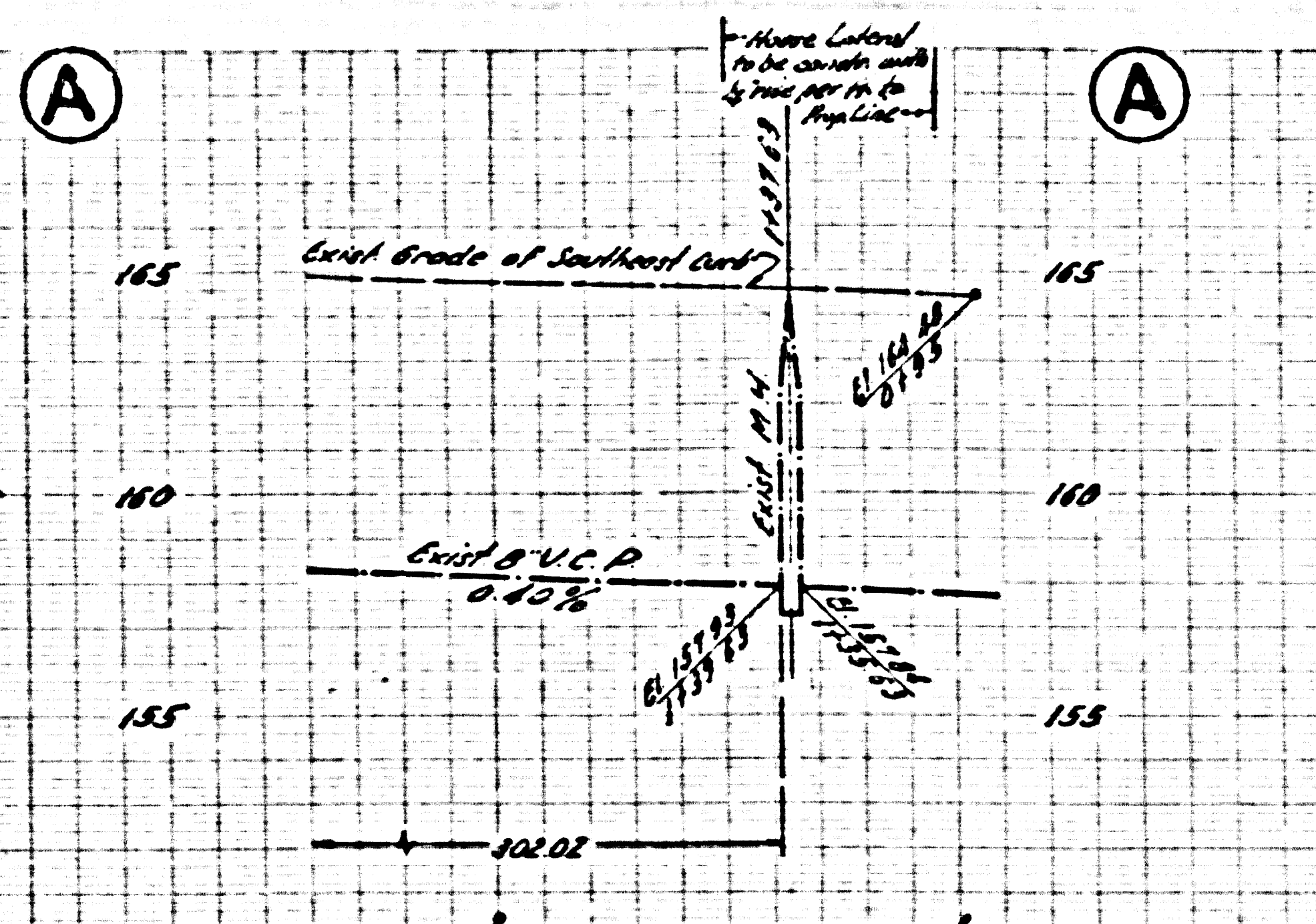
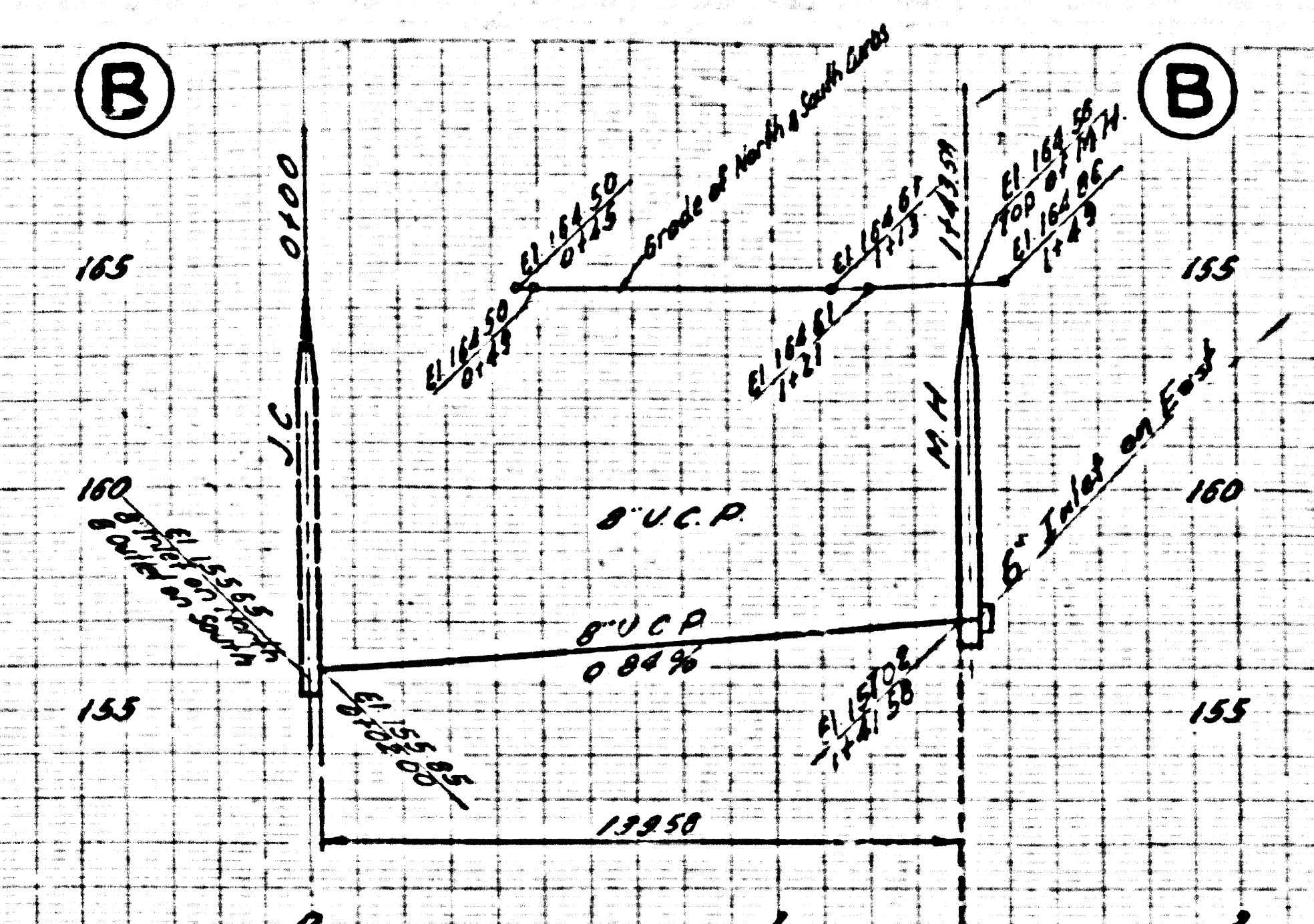
23486



NO CHARGE FOR CONNECTIONS

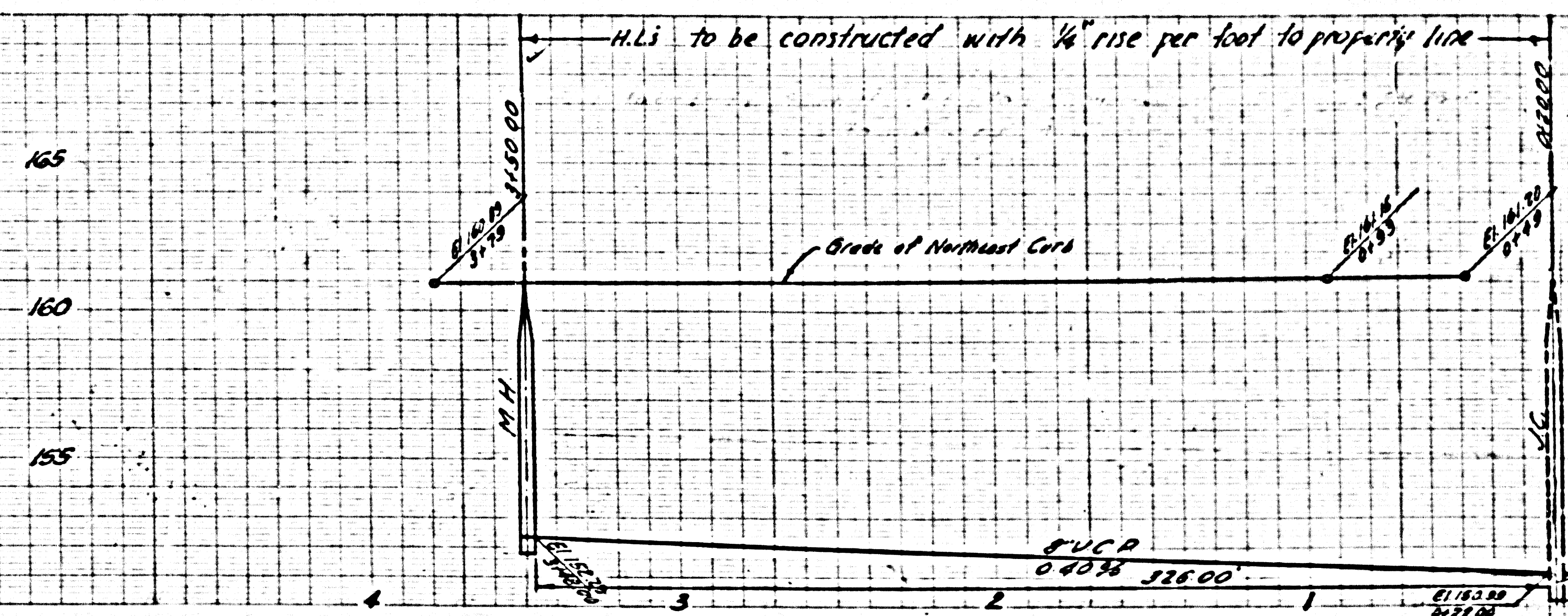
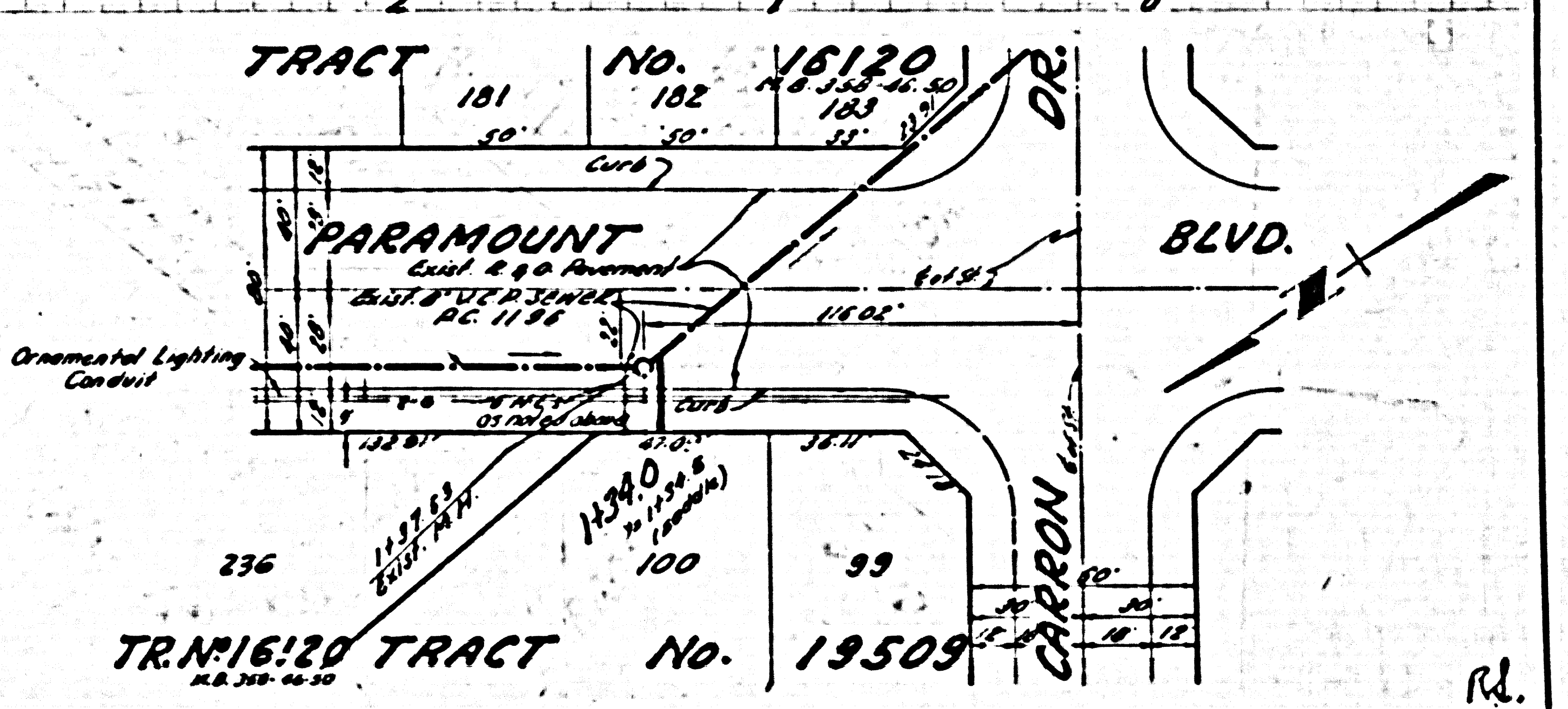
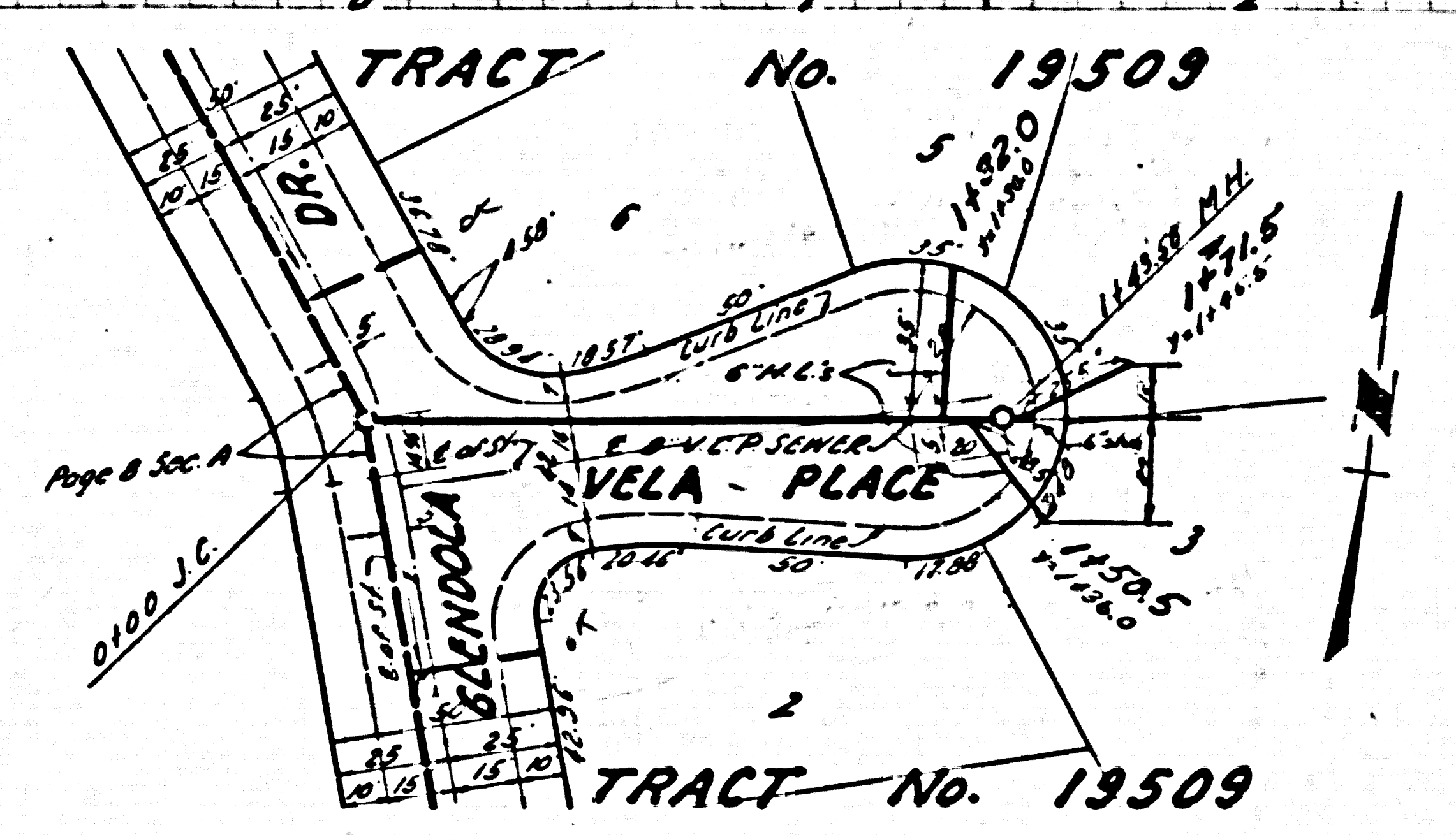
23487





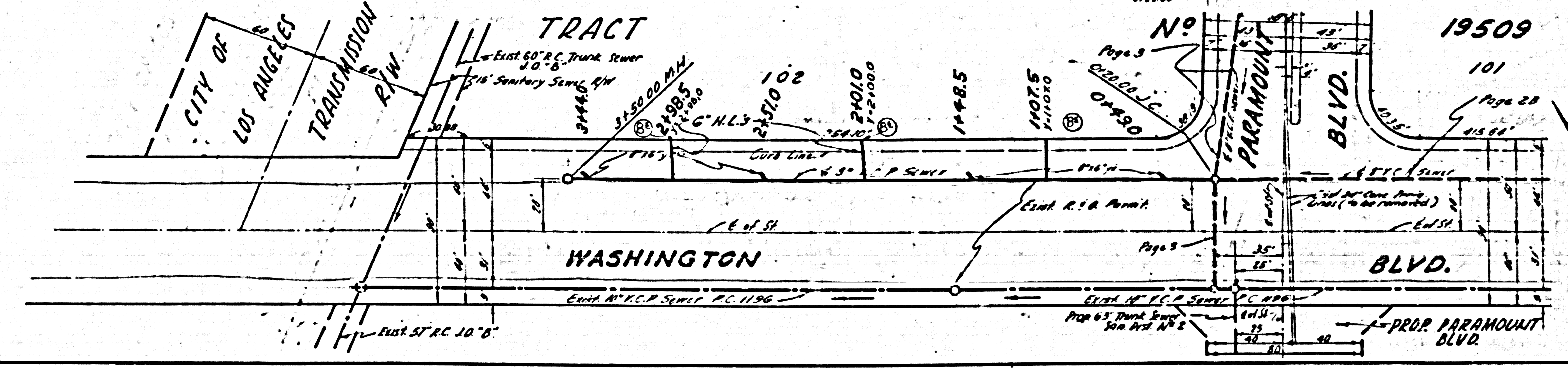
NO CHARGE FOR CONNECTIONS

23,488



NO CHARGE FOR CONNECTIONS

23,489



APPENDIX