

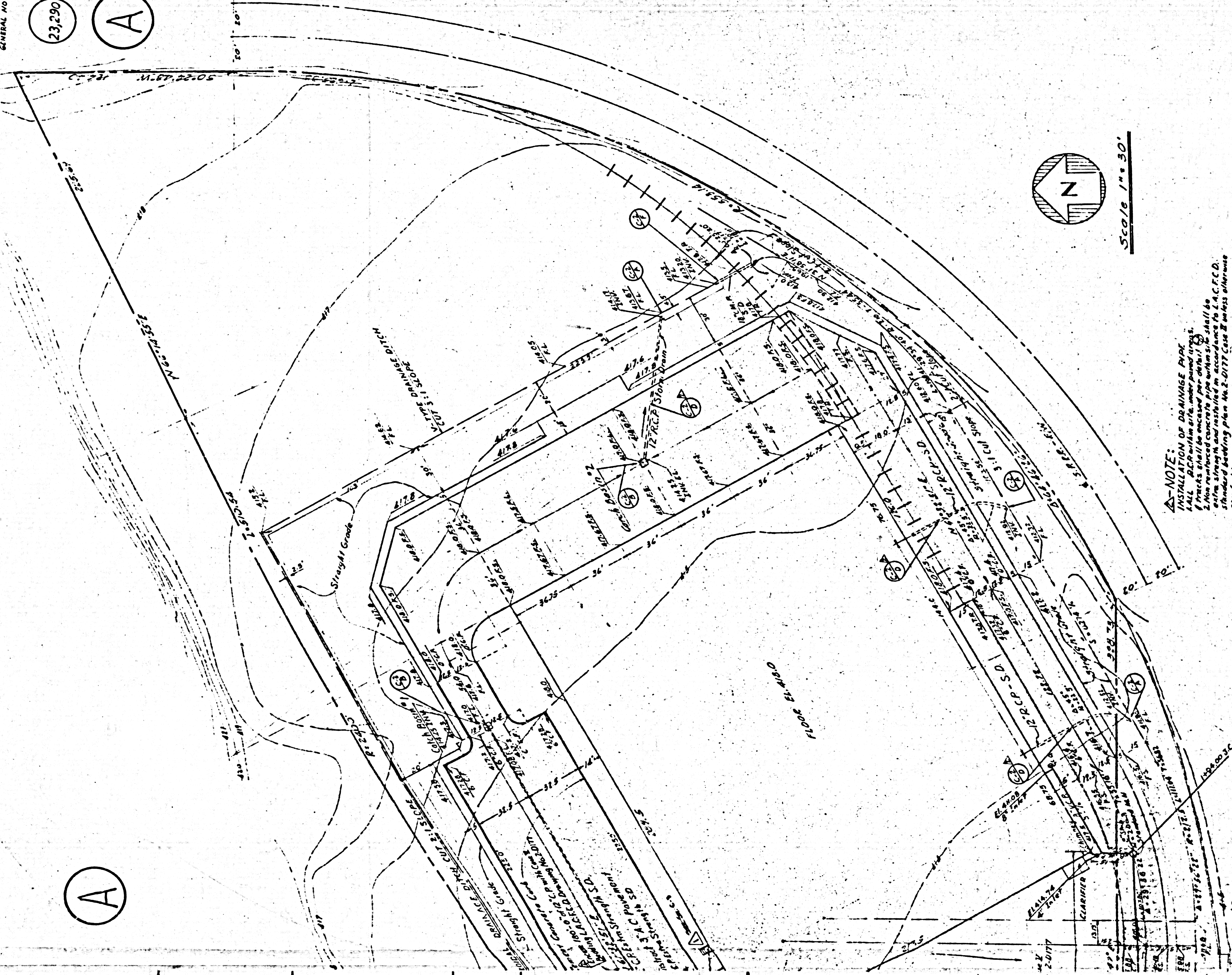
P.C. 3978

P.C. 3978 PAGE 2
SEE PAGE 1 FOR
GENERAL NOTES

23,290

A

A



Scale 1" = 50'

NOTE:
 1. INSTALLATION OF DRAINAGE PIPE SHALL BE IN ACCORDANCE WITH THE STANDARD SPECIFICATIONS FOR HIGHWAY CONSTRUCTION, SECTION 705.01. ALL DRAINAGE PIPES SHALL BE ENCASED PER SECTION 705.01.2. ALL DRAINAGE PIPES SHALL BE 12" DIA. REINFORCED CONCRETE PIPE WITH 2" THICK WALLS. ALL SHALL BE SET IN ACCORDANCE WITH THE STANDARD SPECIFICATIONS FOR HIGHWAY CONSTRUCTION, SECTION 705.01.2. ALL DRAINAGE PIPES SHALL BE SET IN ACCORDANCE WITH THE STANDARD SPECIFICATIONS FOR HIGHWAY CONSTRUCTION, SECTION 705.01.2.

P.C. 3978

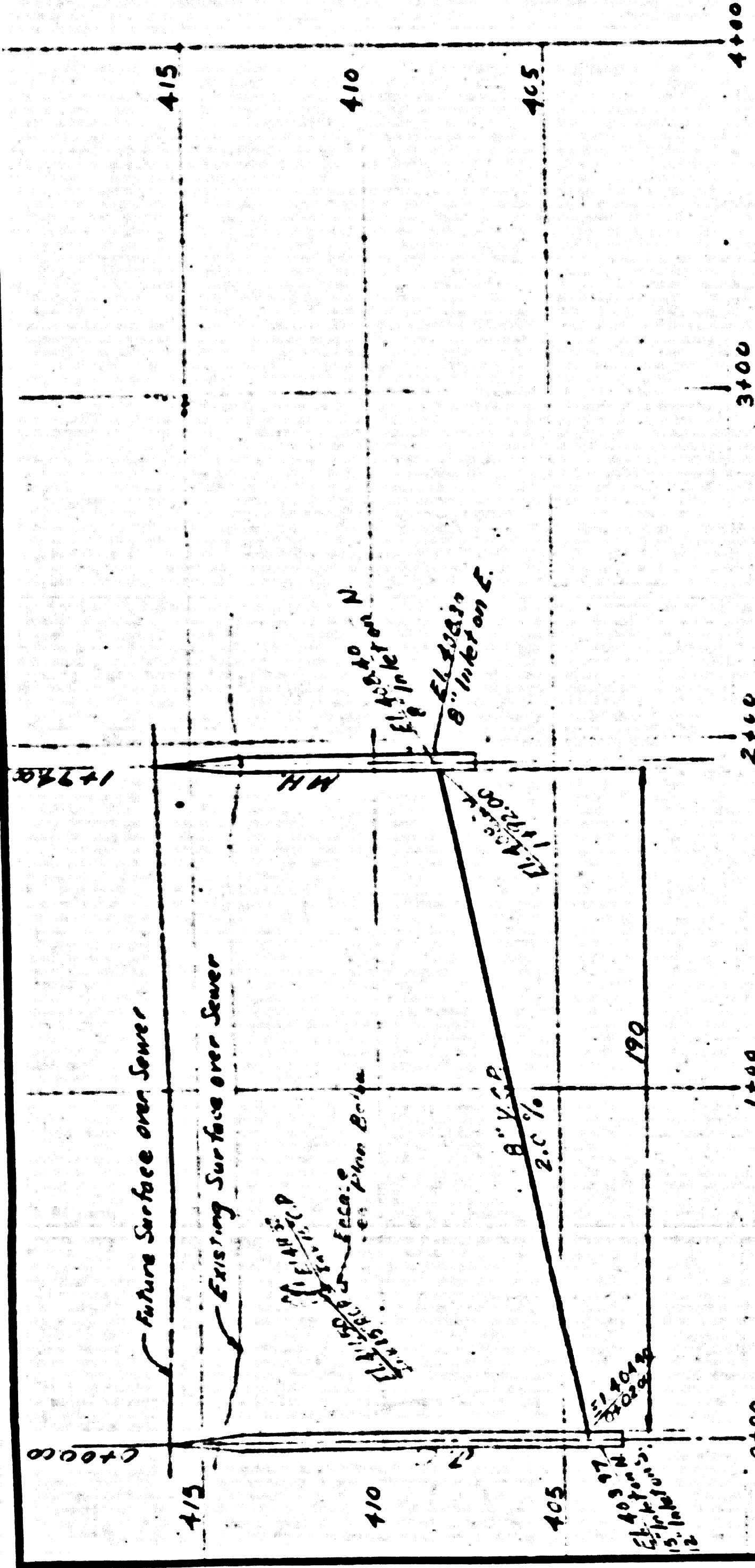
TITLE OF SHEET
 SITE, GRADING, DRAINAGE & SPUR TRACK PLAN

SHEET NO.
 C-1
 OF 3 SHEETS

DATE 4-11-56	JOB NO. 1516	DESIGNED D.A. DAVID T. B.
DATE ISSUED FOR CONST.	CHECKED	

THE PEPSI-COLA COMPANY
 BOTTLING PLANT
 CALIFORNIA

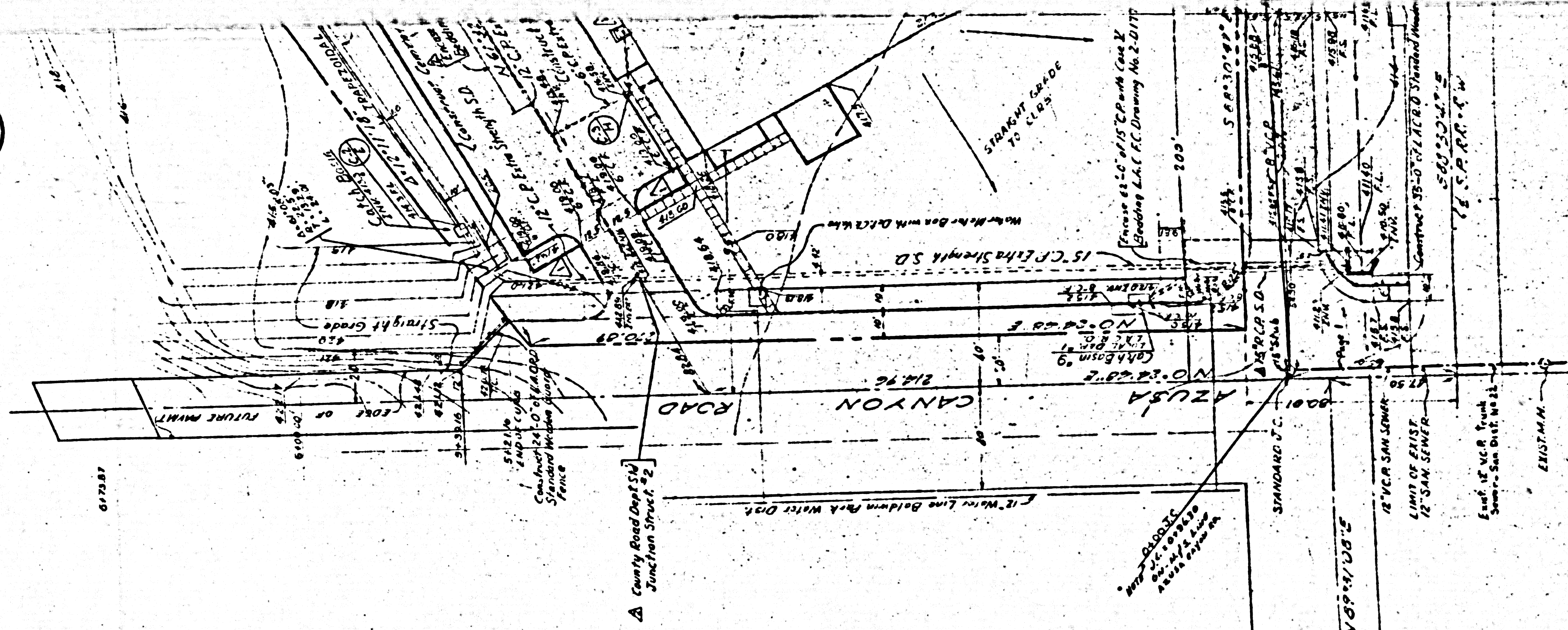
NATUSA CANYON RD.
 ALDWIN PARK



(B)

PC-3978

(B)



REVISIONS	
NO.	DESCRIPTION
1	AS SHOWN
2	AS SHOWN
3	AS SHOWN
4	AS SHOWN
5	AS SHOWN
6	AS SHOWN
7	AS SHOWN
8	AS SHOWN
9	AS SHOWN
10	AS SHOWN
11	AS SHOWN
12	AS SHOWN
13	AS SHOWN
14	AS SHOWN
15	AS SHOWN
16	AS SHOWN
17	AS SHOWN
18	AS SHOWN
19	AS SHOWN
20	AS SHOWN

ALBERT C. MARTIN AND ASSOCIATES
 ARCHITECTS AND ENGINEERS
 333 SOUTH BEAUDRY AVENUE
 LOS ANGELES 17, CALIFORNIA

4416 N.A.T.
 BALDWIN