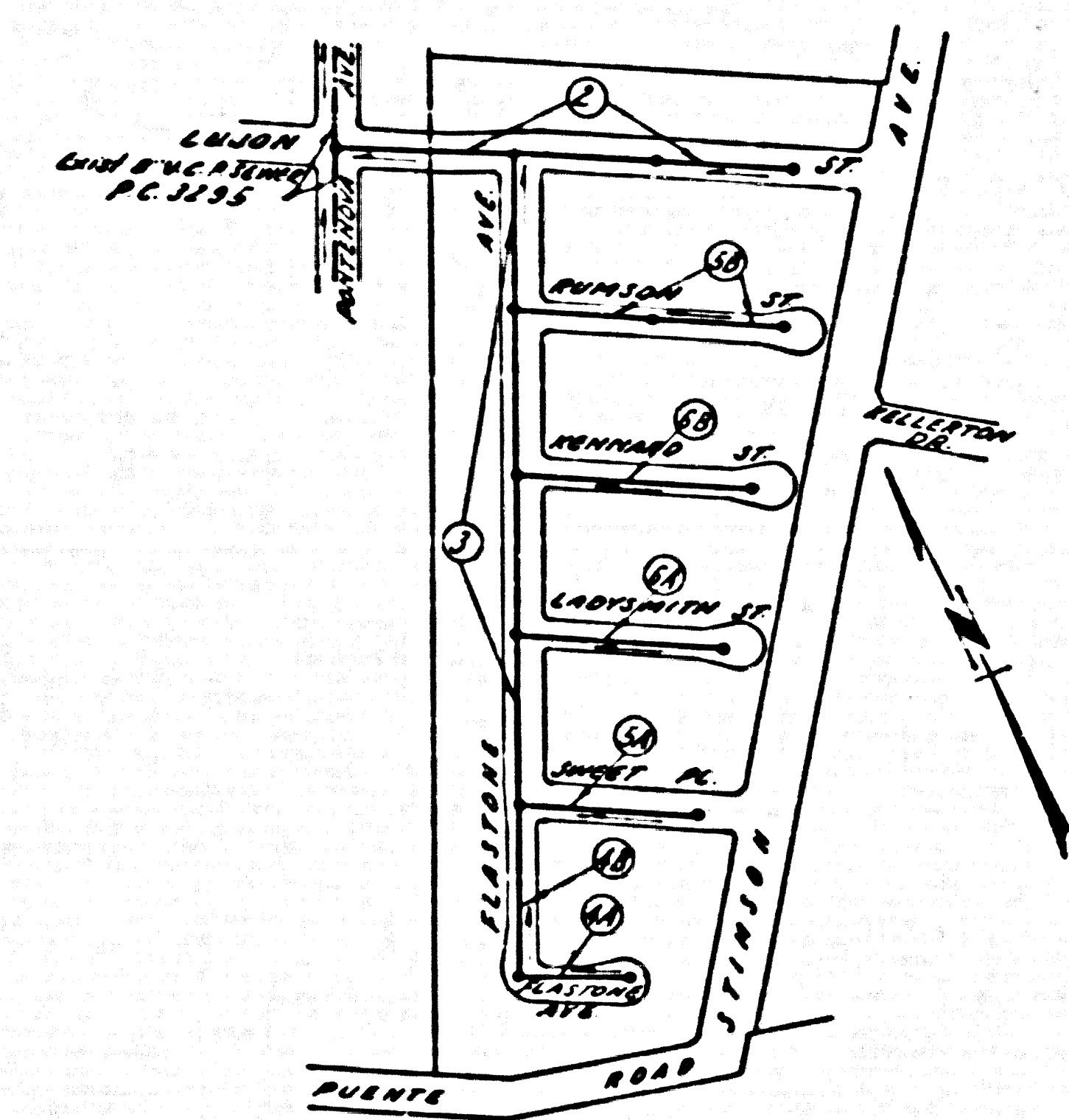


PUENTE BLDG. DIST. NO. 2

PROFILE ALIGNMENT AND GRADE OF **P.C. 3982**
SANITARY SEWERS PAGE **1**
 TO BE CONSTRUCTED IN



INDEX MAP
 TRACT No. 20639
 P.C. 3982 Scale: 1"=300'

- NOTES:**
- PROFILES SHOWN ON THE PROPERTY LINE OR PROPERTY LINES PRODUCED AT RIGHT ANGLES TO THE SEWER LINE AT THE CENTER LINE OF EACH MANHOLE.
 - NO REPRESENTATIVE OF THE COUNTY ENGINEER WILL SIGN, OR LAYOUT ANY PORTION OF THE WORK.
 - THE OWNER OR HIS AUTHORIZED REPRESENTATIVE SHALL FURNISH THE COUNTY ENGINEER WITH GRADE SHEETS AND STATIONING FOR ALL HOUSE LATERALS AND Y BRANCHES AND SHALL PROVIDE STAKES FOR THEM AT THEIR PROPER LOCATIONS WITH STATIONING PLAINLY MARKED. ANY CHANGE IN LOCATION SHALL BE RECORDED IN WRITING BY THE OWNER OR HIS REPRESENTATIVE.
 - NO REVISIONS SHALL BE MADE IN THESE PLANS WITHOUT THE APPROVAL OF THE COUNTY ENGINEER.
 - USE STANDARD MANHOLE FRAMES AND COVERS, S.A. 117.
 - USE STANDARD STRENGTH PIPE.
 - USE CURBING BENTONITE FOR ALL VITRIFIED CLAY PIPE JOINTS.
 - RESURFACE ALL TRENCHES WITHIN PAVED AREA TO MEET L.A. COUNTY ROAD DEPT. OR CALIF. STATE HIGHWAY DEPT. REQUIREMENTS IN ACCORDANCE WITH PERMITS.
 - INCASE FOLIAGE INTERFERENCE WITH POLES, S.A. 119.
 - HOUSE LATERALS TO BE CONSTRUCTED WITH INVERTS AT PROPERTY LINE $\frac{1}{2}$ FEET BELOW CURB GRADE EXCEPT AS NOTED.
 - ALL STRUCTURES SHALL BE BRICK SEWER STRUCTURES, S.A. 104.
 - FOR ALLOWABLE LEAKAGE TEST USE FORMULA NO. 1 SPEC. SEC. 2.
 - THE PRIVATE ENGINEER IS TO RUNDISH THE HOUSE LATERAL BERTH AT THE PROPERTY LINE BELOW THE TOP OF CURB ELEVATION FOR EACH HOUSE LATERAL ON THE GRADE SHEET.

TRACT No. 20639

PRIVATE CONTRACT NO. 3982

W.S. 38

3 SHEETS; 6 PAGES

SCALE: 1"=4' HORIZ. 1"=4' VERT. APRIL, 1956

23,516

PREPARED IN THE OFFICES OF

KEMMERER ENGINEERING CO. INC.

W. C. Johnson
 REG. C. E. NO. 2241

FOR LEGEND SEE PLAN NO. S-A-64

B.M. S. & 1041, Page 450 Spt. and load in S.E. Cor. of Curb found at S.A. R. X-ing signal 2.35' N of E. of Hacienda Blvd. prod. No. 201 N of N. rail main line valley Blvd. X-ing in Puente Elev. 323.80

NO CHARGE FOR CONNECTIONS
 7-7-56
 5-13-56

NOTE:
 GRADES TO WHICH THIS IMPROVEMENT IS TO BE CONSTRUCTED ARE SHOWN ON PLANS AND PROFILES. GRADE POINTS FOR TOP OF CURB, CENTER LINE OF STREETS, OR CENTER LINE OF ALLEYS ARE SHOWN BY CIRCLES ON PROFILES AT ALL POINTS BETWEEN DESIGNATED POINTS THE GRADE SHALL BE ESTABLISHED SO AS TO CONFORM TO A STRAIGHT LINE DRAWN BETWEEN SAID DESIGNATED POINTS.
 ELEVATIONS ARE IN FEET ABOVE U.S.C. & G.S. MEAN SEA LEVEL DATUM 1929.
 THE DRAWING AND THE DATA HEREON ARE HEREBY MADE A PART OF THE SPECIFICATIONS.
 WORK SHALL BE CONSTRUCTED ACCORDING TO SPECIFICATIONS ON FILE IN THE OFFICE OF THE COUNTY ENGINEER AND SHALL BE PROTECTED ONLY BY THE PRESENCE OF THE COUNTY ENGINEER.
 BEFORE WORK CAN BE STARTED, THE CONTRACTOR MUST OBTAIN A PERMIT TO EXCAVATE IN COUNTY STREETS FROM THE L.A. COUNTY ROAD DEPT. 100 W. 10th ST. AND MAKE A DEPOSIT WITH THE COUNTY ENGINEER, ROOM 104 SAN ANTONIO BUILDING 233 SO. BROADWAY SUFFICIENT TO COVER THE COST OF CONSTRUCTION INSPECTION AND RECORD PLANS.
 APPROVAL OF THIS PLAN BY THE COUNTY OF LOS ANGELES DOES NOT CONSTITUTE A REPRESENTATION AS TO THE ACCURACY OF THE LOCATION OF OR THE EXISTENCE OR NON-EXISTENCE OF ANY UNDERGROUND UTILITY PIPE, OR STRUCTURE WITHIN THE LIMITS OF THIS PROJECT THIS NOTE APPLIES TO ALL PAGES.
 IF WORK IS TO BE DONE IN A STATE HIGHWAY, A PERMIT MUST BE OBTAINED FROM THE STATE OF CALIFORNIA, DIVISION OF HIGHWAYS, 120 SOUTH SPRING STREET.

COUNTY OF LOS ANGELES, CALIFORNIA

APPROVED, JOHN A. LAMBE, COUNTY ENGINEER

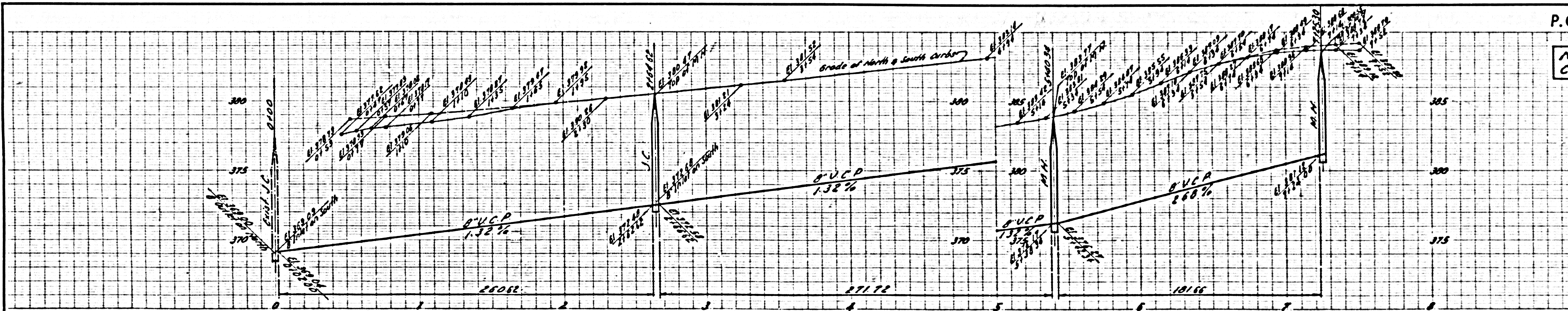
APPROVED, A. M. BAWN, CHIEF ENGINEER

BY *A. P. Collins*
 SANITATION ENGINEER

BY *J. P. Robinson*
 OFFICE ENGINEER

CHECKED BY *S. K. Duda* 6-13-56
 OFFICE OF COUNTY ENGINEER, REG. C. E. NO. 3406

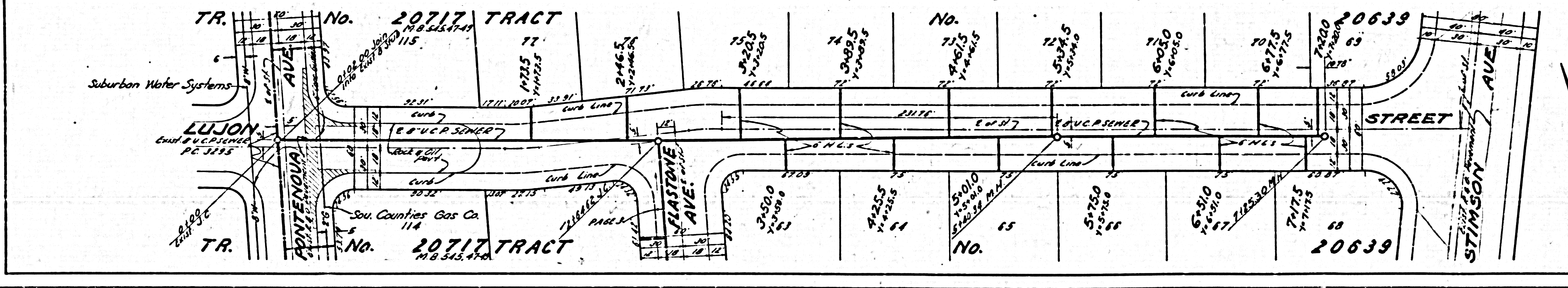
Checked 10-10-56 McLaren



P.C. 3982 PAGE 2

NO CHARGE FOR CONNECTIONS

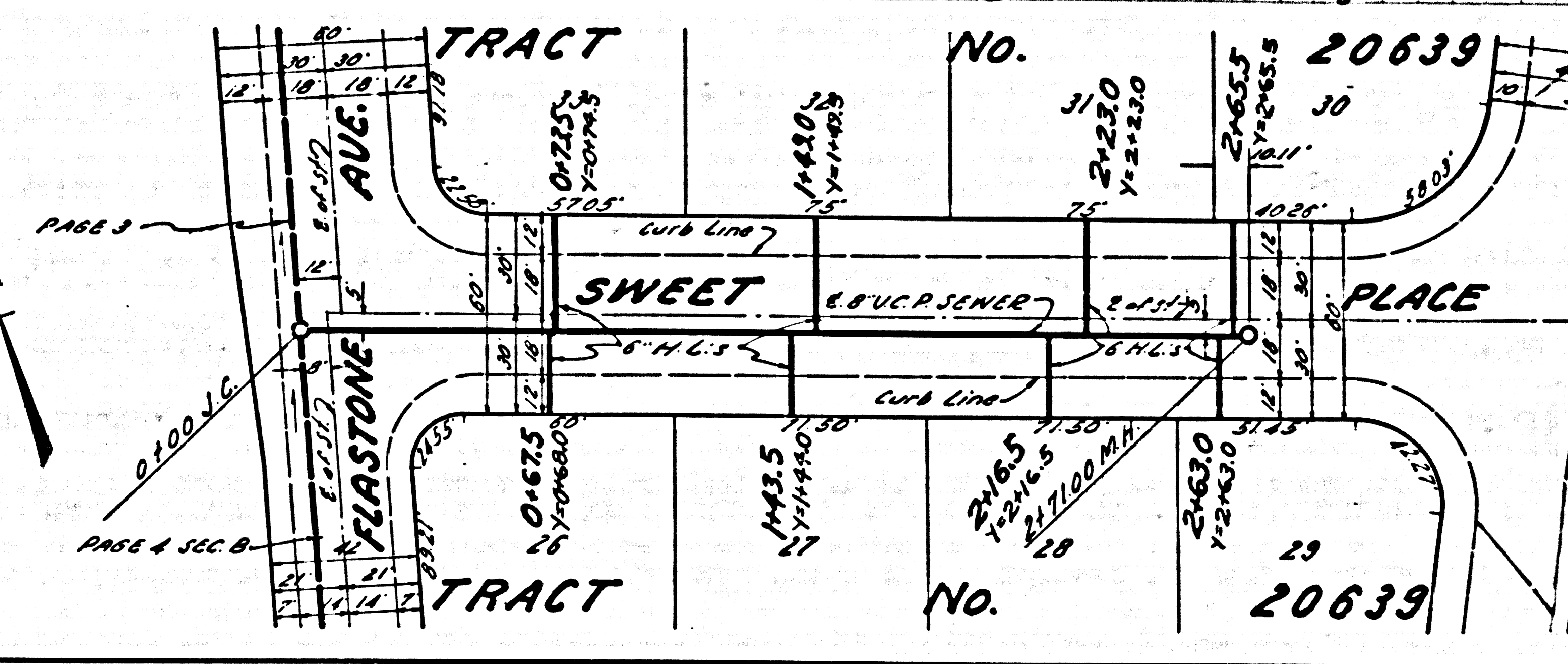
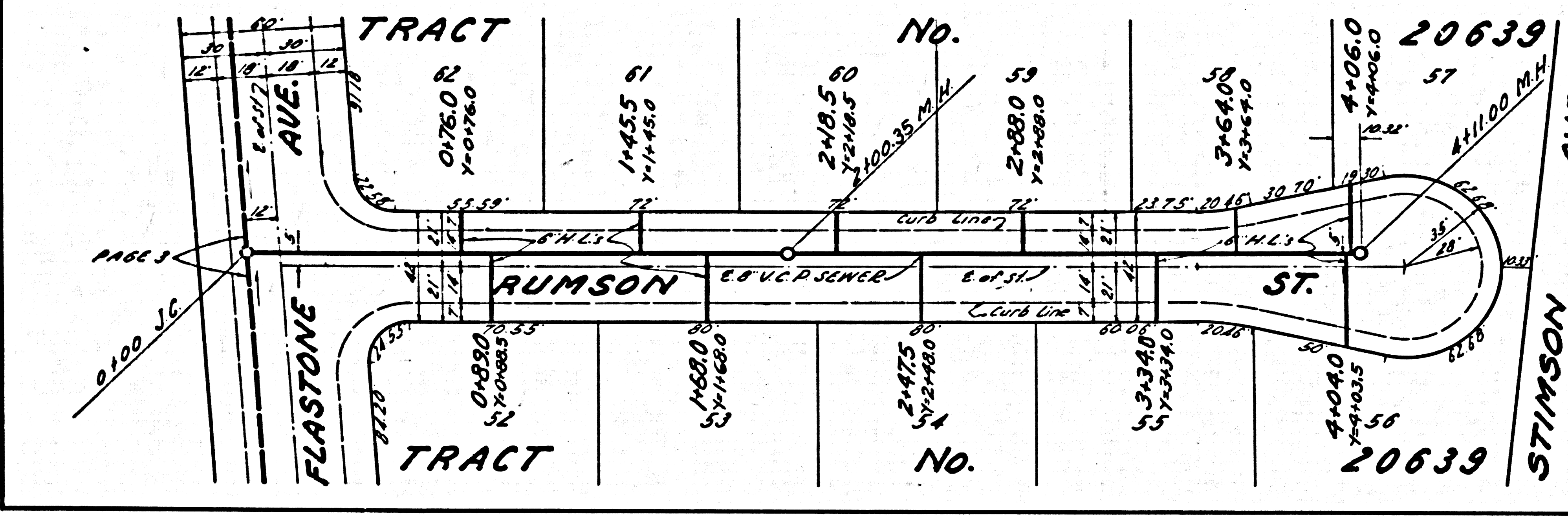
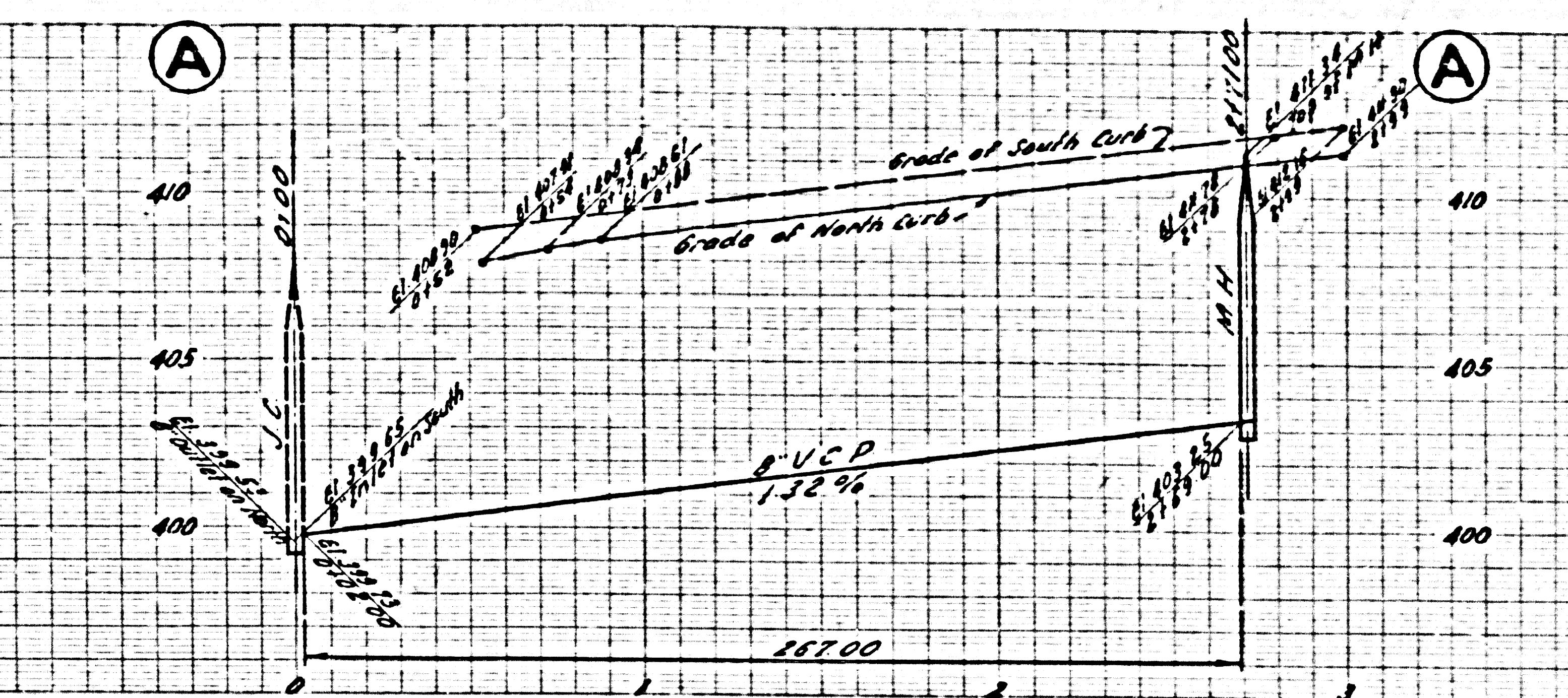
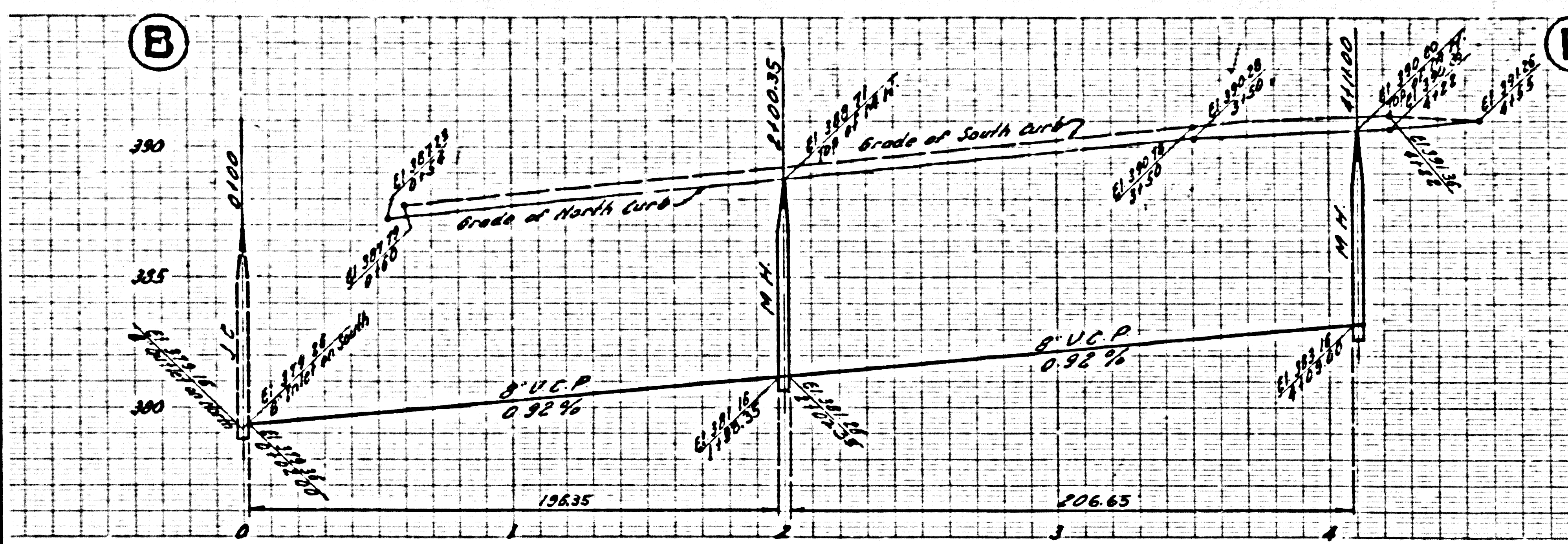
23,517



SPR
 5-13-56

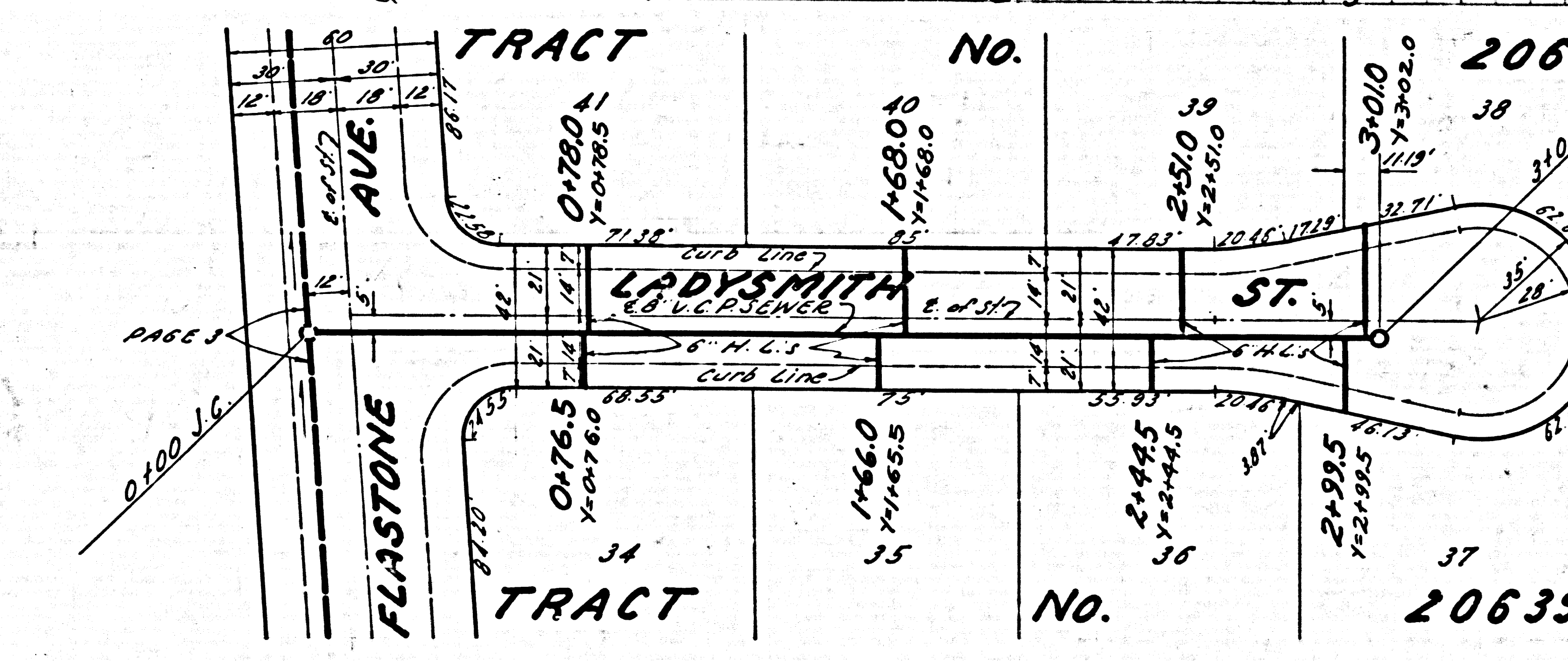
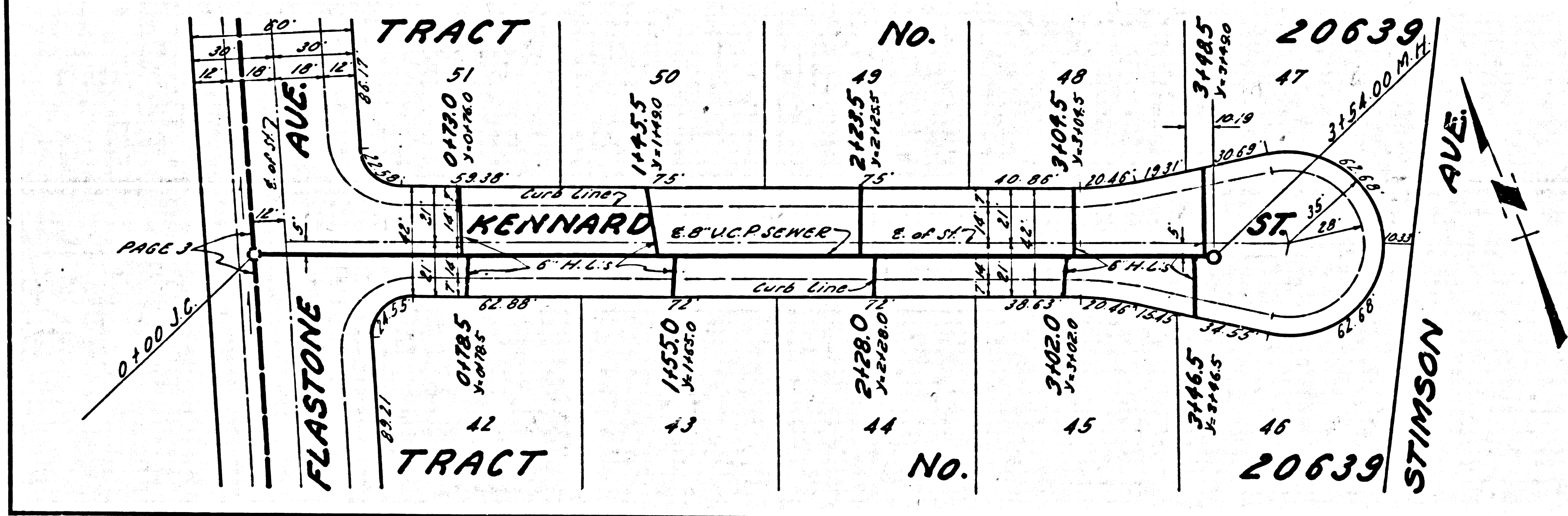
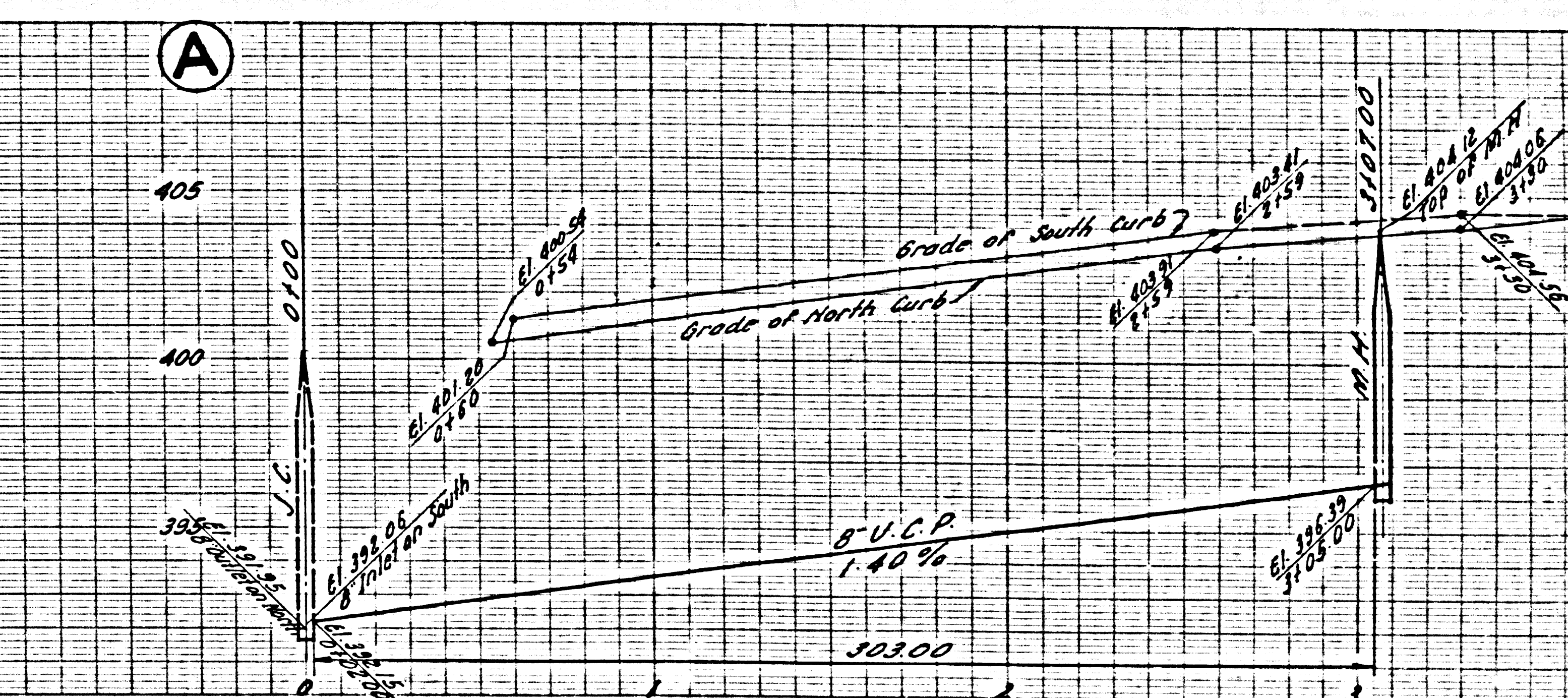
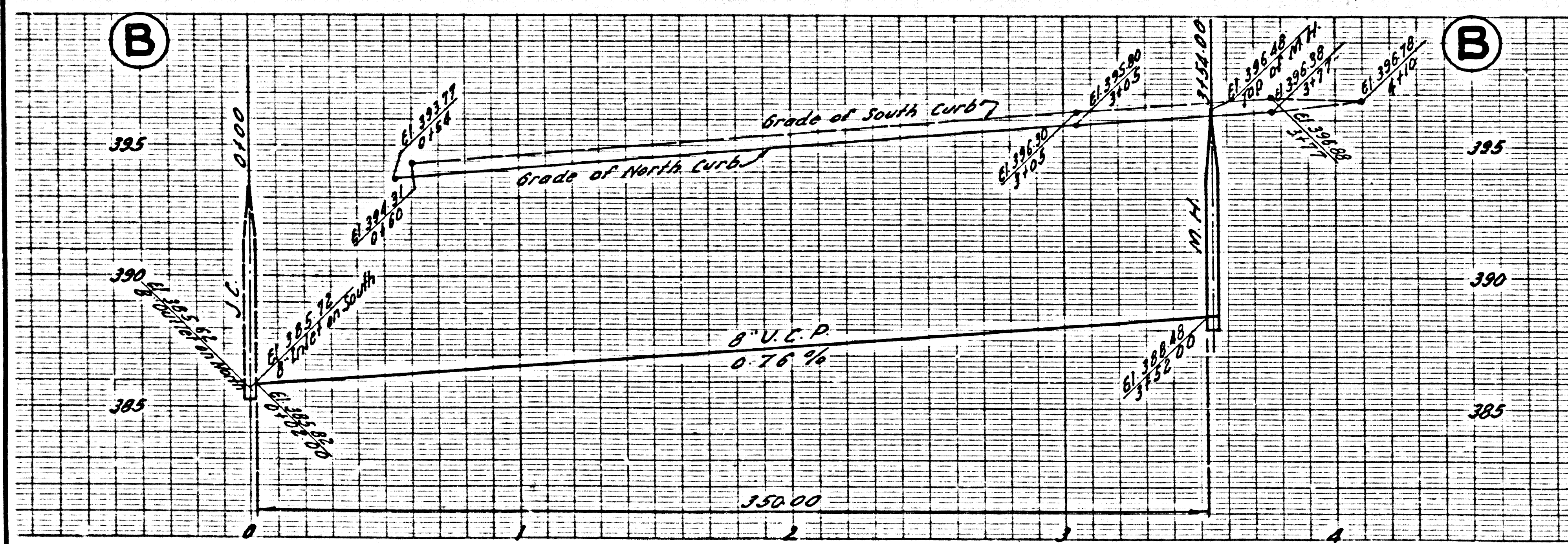
NO CHARGE FOR CONNECTIONS

23,520



NO CHARGE FOR CONNECTIONS

23,521



PC 3982