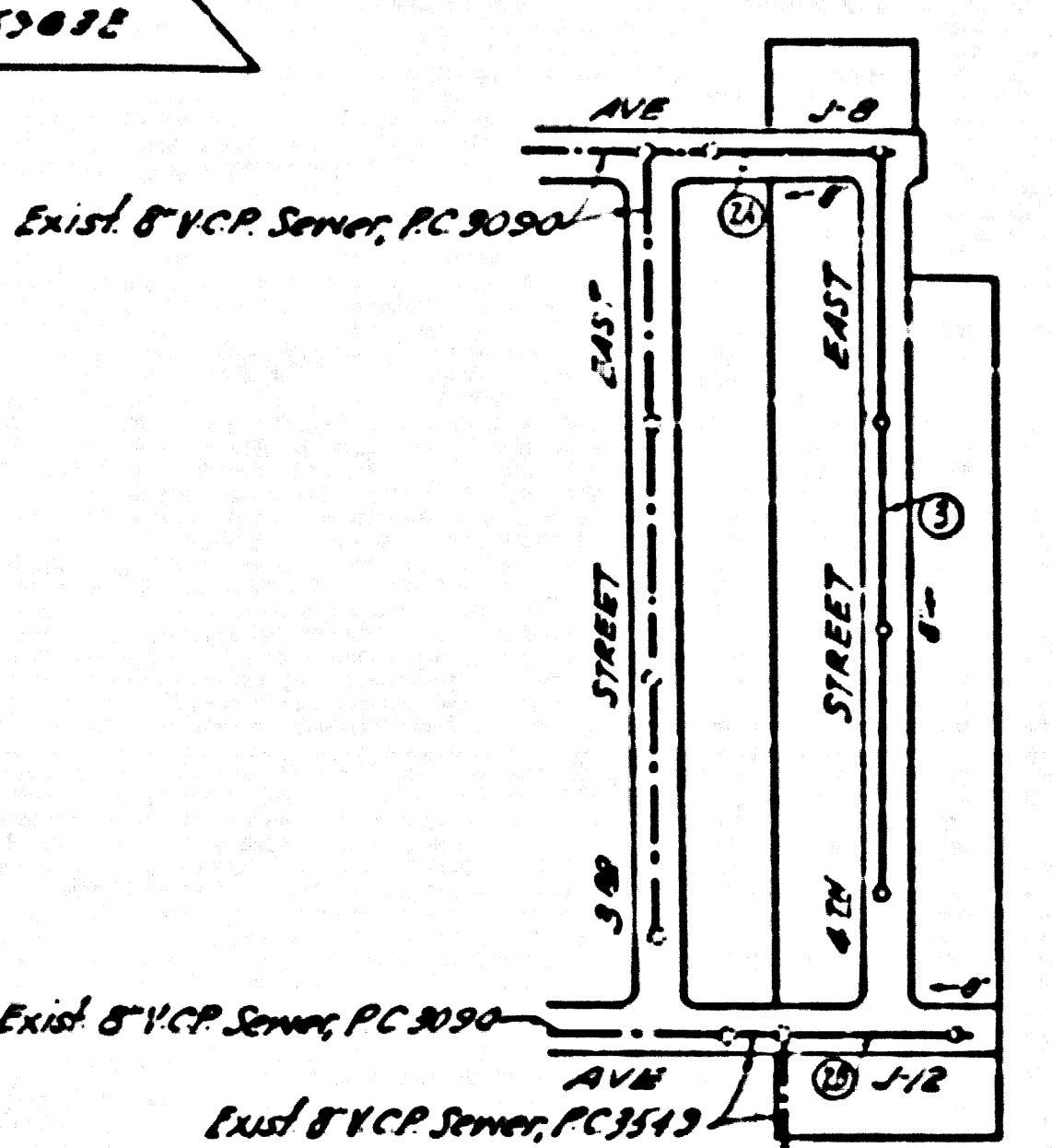


BM TBM 1193K Elev 2431.15 C.S. 12.1533 in 879
 1/2" Corner Pin "A" Division SF
 87' Sp. to SW Side of Power Pole N164E50.82



INDEX MAP
 P.C. 3991
 TRACT 20091
 SCALE: 1" = 300'

LANCASTER BLDG. DIST. NO. 8

- NOTES
- PROVIDE STAKES ON THE PROPERTY LINE OR PROPERTY LINES PRODUCED AT RIGHT ANGLES TO THE SEWER LINE AT THE CENTER LINE OF EACH MANHOLE.
 - NO REPRESENTATIVE OF THE COUNTY ENGINEER WILL SURVEY OR LAYOUT ANY PORTION OF THE WORK.
 - THE OWNER OR HIS AUTHORIZED REPRESENTATIVE SHALL FURNISH THE COUNTY ENGINEER WITH GRADE SHEETS AND STATION FOR ALL HOUSE LATERALS AND 8" MANHOLES AND SHALL PROVIDE STAKES FOR THEM AT THEIR PROPER LOCATIONS WITH STATIONING PLAINLY MARKED. ANY CHANGE IN LOCATION SHALL BE REQUESTED IN WRITING BY THE OWNER OR HIS REPRESENTATIVE.
 - NO REVISIONS SHALL BE MADE IN THESE PLANS WITHOUT THE APPROVAL OF THE COUNTY ENGINEER.
 - USE STANDARD MANHOLE REARMS AND COVERS, S.A.-64, EXCEPT AS NOTED.
 - USE STANDARD STRENGTH PIPE EXCEPT AS NOTED.
 - USE CEMENT MORTAR FOR ALL WITHIN 8" CLAY PIPE JOINTS.
 - RESURFACE ALL TRACER WITHIN PAVED AREA TO MEET L.A. COUNTY ROAD DEPT., OR CALIF. STATE HIGHWAY DEPT. REQUIREMENTS IN ACCORDANCE WITH PERMITS.
 - SHOULDER FOUR FEET OF SEWER AT POINTS OF INTERFERENCE WITH POLES, S.A. 119.
 - HOUSE LATERALS TO BE CONSTRUCTED WITH INVERTS AT PROPERTY LINE 6" FEET BELOW CURB OR AS NOTED.
 - ALL STRUCTURES SHALL BE BRICK SEWER STRUCTURES, S.A.-64, EXCEPT AS NOTED.
 - FOR ALLOWABLE DAMAGE TEST USE FORMULA NO. 1 SPEC. 11. 25
 - MANHOLE TOPS IN IMPROVED RIGHTS-OF-WAY TO BE 6" ABOVE FINISHED GRADE.
 - INSTALL ALL PIPE JOINTS WITH 8" CEMENT MORTAR THAT ARE WITHIN 20 FEET OF ALL PROPERTY LINES OR IN DOMESTIC SEWER LINES.
 - The private engineer is to furnish the house lateral depth at the property line below the top of curb elevation for each house lateral on the grade sheet.

SHEET NO.	PAGES
1	1, 2
2	3

NO CHARGE FOR CONNECTIONS
 S.K. 10-27-56

PROFILE ALIGNMENT AND GRADE OF P.C. 3991
 SANITARY SEWERS PAGE 1

TO BE CONSTRUCTED IN
 TRACT No 20091 (24770)

PRIVATE CONTRACT NO. 3991

W.S. 70
 2 SHEETS; 3 PAGES
 SCALE: 1" = 6' APRIL, 1956

PREPARED IN THE OFFICES OF
 HARRY GILBERT

FOR LEGEND SEE PLAN NO. S-A-64

NOTE: GRADES TO WHICH THIS IMPROVEMENT IS TO BE CONSTRUCTED ARE SHOWN ON PLANS AND PROFILES GRADE POINTS FOR TOP OF CURB, CENTER LINE OF STREETS, OR CENTER LINE OF ALLEYS ARE SHOWN BY CIRCLES ON PROFILES AT ALL POINTS BETWEEN DESIGNATED POINTS THE GRADE SHALL BE ESTABLISHED SO AS TO CONFORM TO A STRAIGHT LINE DRAWN BETWEEN SAID DESIGNATED POINTS.

ELEVATIONS ARE IN FEET ABOVE U.S.C. & G.S. MEAN SEA LEVEL UNLESS OTHERWISE SPECIFIED.

THIS DRAWING AND THE DATA HEREON ARE HEREBY MADE A PART OF THE SPECIFICATIONS.

WORK SHALL BE CONSTRUCTED ACCORDING TO SPECIFICATIONS ON FILE IN THE OFFICE OF THE COUNTY ENGINEER AND SHALL BE INSPECTED ON SITE IN THE PRESENCE OF THE COUNTY ENGINEER.

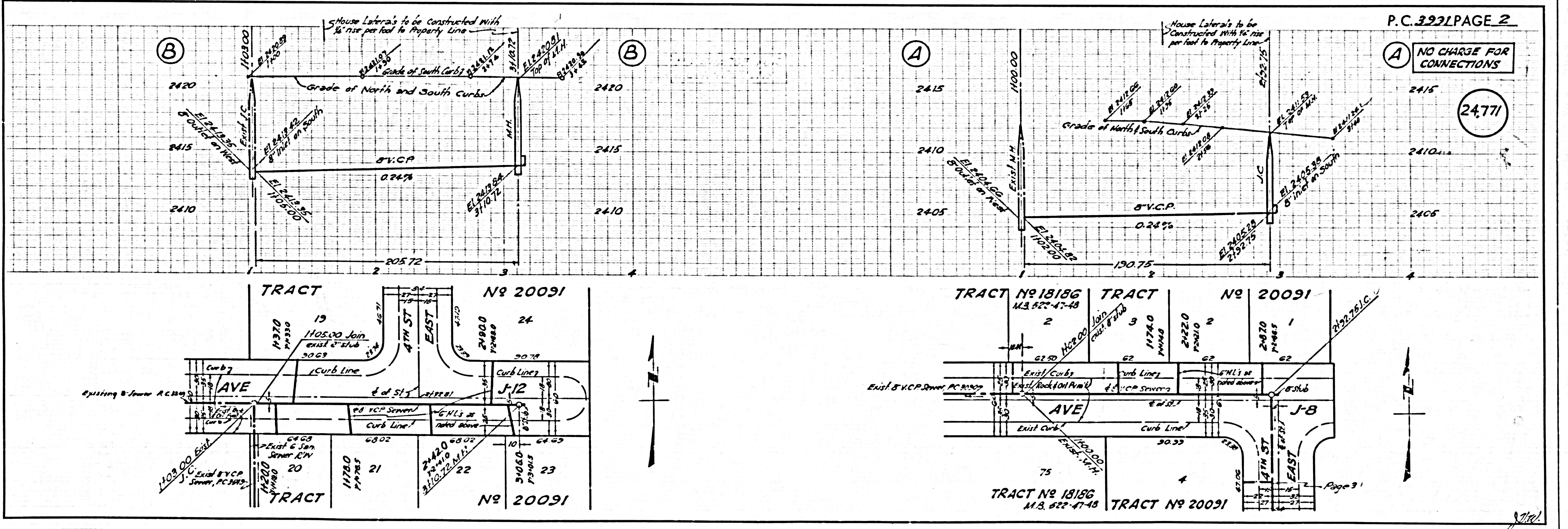
BEFORE WORK CAN BE STARTED THE CONTRACTOR MUST OBTAIN A PERMIT TO EXCAVATE IN COUNTY SQUARE FROM THE L.A. COUNTY ROAD DEPT., THE W. 800 ST. AND MAKE AN AGREEMENT WITH THE COUNTY ENGINEER, ROOM 214 SAN AMERICAN BLDG. 333 SO. BRADWAY SUFFICIENT TO COVER THE COST OF CONSTRUCTION INSPECTION AND RECORD PLANS.

APPROVAL OF THIS PLAN BY THE COUNTY OF LOS ANGELES DOES NOT CONSTITUTE A REPRESENTATION AS TO THE ACCURACY OF THE LOCATION OR OF THE EXISTENCE OR NON-EXISTENCE OF ANY UNDERGROUND UTILITY PIPE, OR STRUCTURE WITHIN THE LIMITS OF THIS PROJECT. THIS NOTE APPLIES TO ALL PAGES.

IF WORK IS TO BE DONE IN A STATE HIGHWAY, A PERMIT MUST BE OBTAINED FROM THE STATE OF CALIFORNIA, DIVISION OF HIGHWAYS, 120 SOUTH SPRING STREET.

COUNTY OF LOS ANGELES, CALIFORNIA

APPROVED, JOHN A. LAMBE, COUNTY ENGINEER
 APPROVED, A. M. BAWN, CHIEF ENGINEER
 BY A. P. Collins SANITATION ENGINEER
 BY G. Coethman OFFICE ENGINEER
 CHECKED BY P. K. Huber 10-27-56
 OFFICE OF COUNTY ENGINEER, REG. C. E. NO. 7860



P.C. 3991 PAGE 2

NO CHARGE FOR CONNECTIONS

(24771)

TRACT No 18186 M.B. 622-47-48

TRACT No 20091

TRACT No 18186 M.B. 622-47-48

TRACT No 20091

100-39

