

B.M. - S.B. 608 Elev. 818.001 - M 1 of 287
 L.A. County Surveyors Manual, in hand
 held @ S. corner of Baldwin's Bldg.

TEMPLE CITY BLDG. DIST. NO. 5

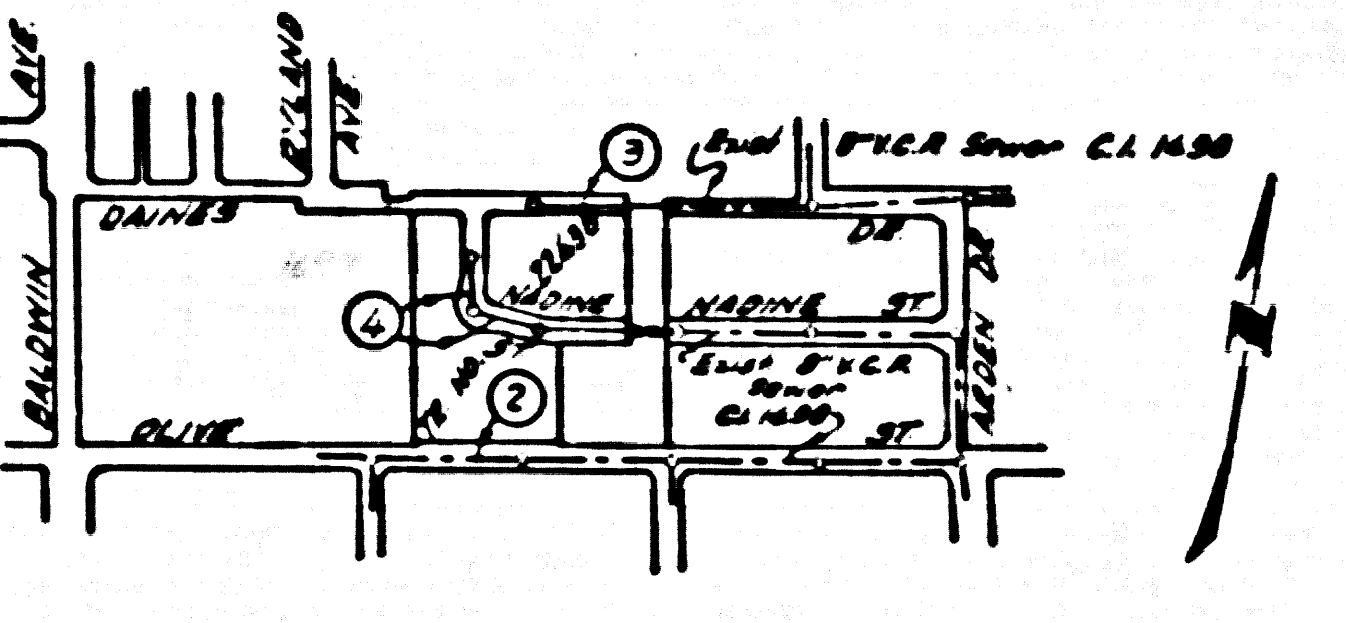
PROFILE ALIGNMENT AND GRADE OF **P.C. 3993**
SANITARY SEWERS PAGE **1**
 TO BE CONSTRUCTED IN

TRACT NO. 22438
PRIVATE CONTRACT NO. 3993

W.S. 46
 2 SHEETS, 4 PAGES
 SCALE: 1" = 40' - 1" = 40' MAY 1956 **23,722**
 PREPARED IN THE OFFICES OF
M.W. FINLEY CO. (4)
 BY Leon W. Moore REG. C. E. NO. 7137
 FOR LEGEND SEE PLAN NO. S-A-64

- NOTES**
- PROVIDE STAKES ON THE PROPERTY LINE OR PROPERTY LINES PRODUCED AT 45° ANGLES TO THE SEWER LINE AT THE CENTER LINE OF EACH MANHOLE.
 - NO REPRESENTATIVE OF THE COUNTY ENGINEER WILL SURVEY OR LAYOUT ANY PORTION OF THE WORK.
 - THE OWNER OR HIS AUTHORIZED REPRESENTATIVE SHALL FURNISH THE COUNTY ENGINEER WITH GRADE SHEETS AND STATION FOR ALL HOUSE LATERALS AND T BRANCHES AND SHALL PROVIDE STAKES FOR THEM AT THEIR PROPER LOCATIONS WITH STATIONING AND PLAIN NAMES. ANY CHANGE IN LOCATION SHALL BE REQUESTED IN WRITING BY THE OWNER OR HIS REPRESENTATIVE.
 - NO REVISIONS SHALL BE MADE IN THESE PLANS WITHOUT THE APPROVAL OF THE COUNTY ENGINEER.
 - USE STANDARD MANHOLE FRAMES AND COVERS, S.A. 117, EXCEPT AS NOTED.
 - USE STANDARD STRENGTH PIPE EXCEPT AS NOTED.
 - USE CEMENT MORTAR FOR ALL VITRIFIED CLAY PIPE JOINTS.
 - RESURFACE ALL TERRACE WITHIN PAVED AREA TO MEET L. A. COUNTY ROAD DEPT. C-4 CAMP STATE HIGHWAY DEPT. BROWN-SHAW'S IN ACCORDANCE WITH PRESENTS.
 - ENCASE FOUR FEET OF SEWER AT POINTS OF INTERFERENCE WITH HOLES, S.A. 118.
 - HOUSE LATERALS TO BE CONSTRUCTED WITH INVERTS AS PROPERTY LINE $\frac{1}{2}$ FEET BELOW CURB GRADE EXCEPT AS NOTED.
 - ALL STRUCTURES SHALL BE BUILT TO MEET SPECIFICATIONS, S.A. 124, EXCEPT AS NOTED.
 - FOR ALLOWABLE MARLBOR TEST USE FORMULA NO. 1, SPEC. SEC. 54.
 - MANHOLE TOPS IN UNIMPROVED RIGHTS-OF-WAY TO BE 4" ABOVE FINISHED GRADE.
 - THE PRIVATE ENGINEER IS TO FURNISH THE HOUSE LATERAL DEPTH AT THE PROPERTY LINE BELOW THE (TOP OF CURB ELEVATION) FOR EACH HOUSE LATERAL, ON THE GRADE SHEET.

NO CHARGE FOR CONNECTIONS
 L. Carter 7-6-56

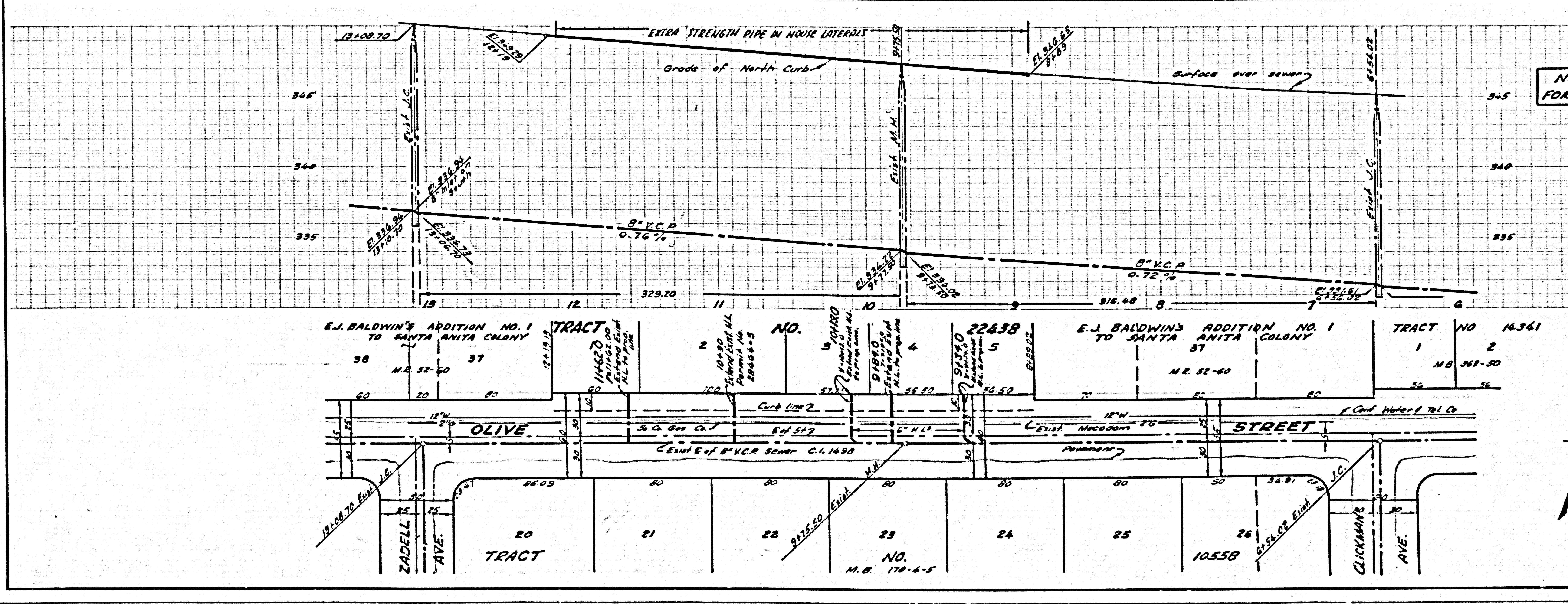


Checked 12-3-56 McLean

NOTE:
 GRADES TO WHICH THIS IMPROVEMENT IS TO BE CONSTRUCTED ARE SHOWN ON PLANS AND PROFILES. GRADE POINTS FOR TOP OF CURBS, CENTER LINE OF STREETS, OR CENTER LINE OF ALLEYS ARE SHOWN BY CIRCLES ON PROFILES AT ALL POINTS BETWEEN DESIGNATED POINTS. THE GRADE SHALL BE ESTABLISHED SO AS TO CONFORM TO A STRAIGHT LINE DRAWN BETWEEN SAID DESIGNATED POINTS.
 ELEVATIONS ARE IN FEET ABOVE U.S.C. & G.S. MEAN SEA LEVEL, DATUM OF 1929.
 THE DRAWINGS AND THE DATA HEREON ARE HEREBY MADE A PART OF THE SPECIFICATIONS.
 WORK SHALL BE CONSTRUCTED ACCORDING TO SPECIFICATIONS ON FILE IN THE OFFICE OF THE COUNTY ENGINEER AND SHALL BE PROSECUTED ONLY IN THE PRESENCE OF THE COUNTY ENGINEER.
 BEFORE WORK CAN BE STARTED, THE CONTRACTOR MUST OBTAIN A PERMIT TO EXCAVATE ON COUNTY STREETS FROM THE L. A. COUNTY ROAD DEPT. FOR 150 FEET OF THE DISTRICT WITHIN THE COUNTY ENGINEER'S ROOM 224 SAN ANITA COLONY BUILDING 315 SO BROADWAY SUPPLEMENT TO COVER THE COST OF CONSTRUCTION INSPECTION AND RECORD PLANS.
 APPROVAL OF THIS PLAN BY THE COUNTY OF LOS ANGELES DOES NOT CONSTITUTE A REPRESENTATION AS TO THE ACCURACY OF THE LOCATION OR THE EXISTENCE OR NON-EXISTENCE OF ANY UNDERGROUND UTILITY PIPE, OR STRUCTURE WITHIN THE LIMITS OF THIS PROJECT. THIS NOTE APPLIES TO ALL PAGES.
 IF WORK IS TO BE DONE IN A STATE HIGHWAY, A PERMIT MUST BE OBTAINED FROM THE STATE OF CALIFORNIA, DIVISION OF HIGHWAYS, 138 SOUTH SPRING STREET.

COUNTY OF LOS ANGELES, CALIFORNIA
 APPROVED, JOHN A. LAMBE, COUNTY ENGINEER
 APPROVED, A. M. RAWLIN, CHIEF ENGINEER
 BY A. J. Rollins SANITATION ENGINEER
 BY S. J. Posthumus OFFICE ENGINEER
 CHECKED BY P. K. Kuhn 7-7-56
 OFFICE OF COUNTY ENGINEER, REG. C. E. NO. 7860

P.C. 3993 PAGE 2

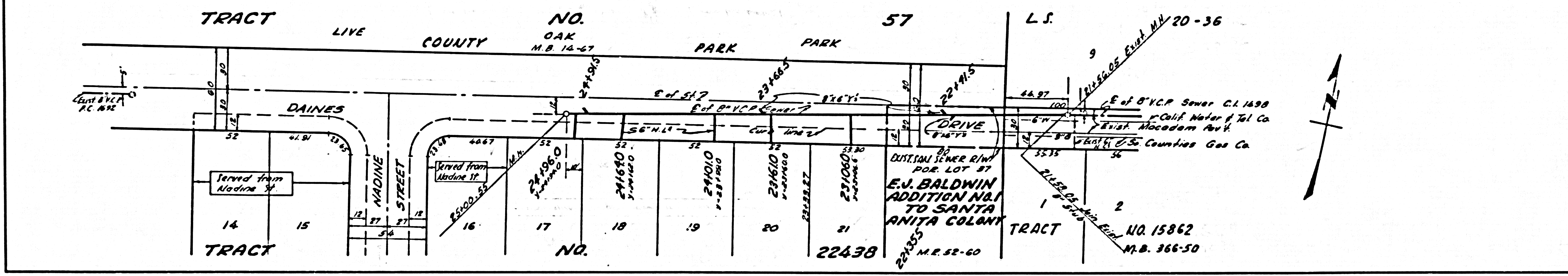
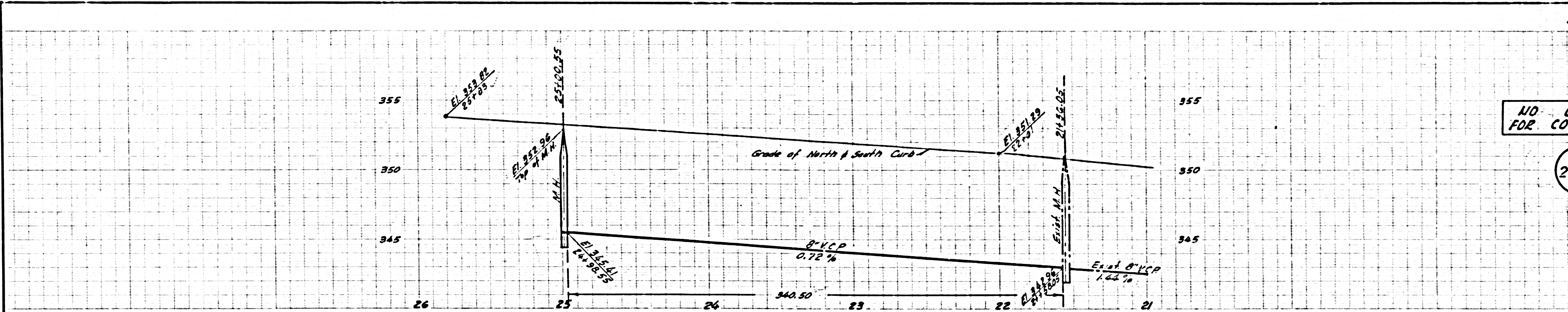


NO CHARGE FOR CONNECTIONS
23,722

P.C. 3993
 Rev. 1-37-51
 -3-

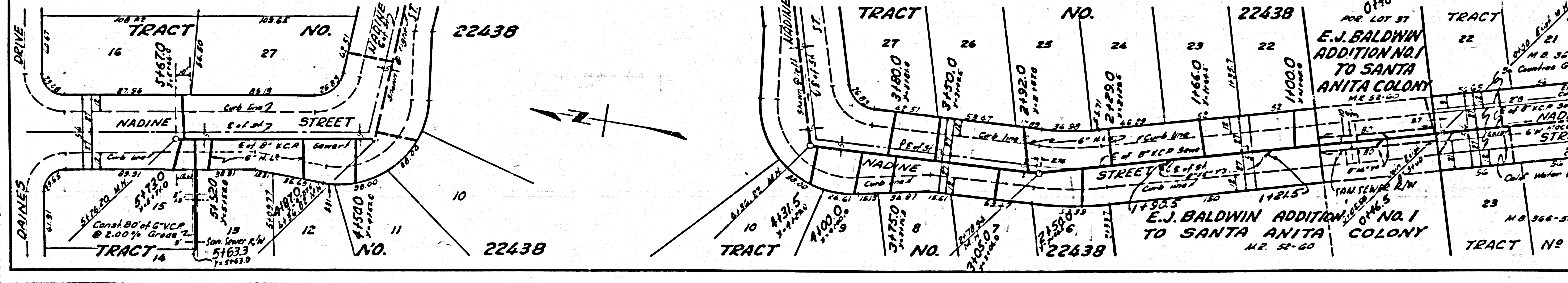
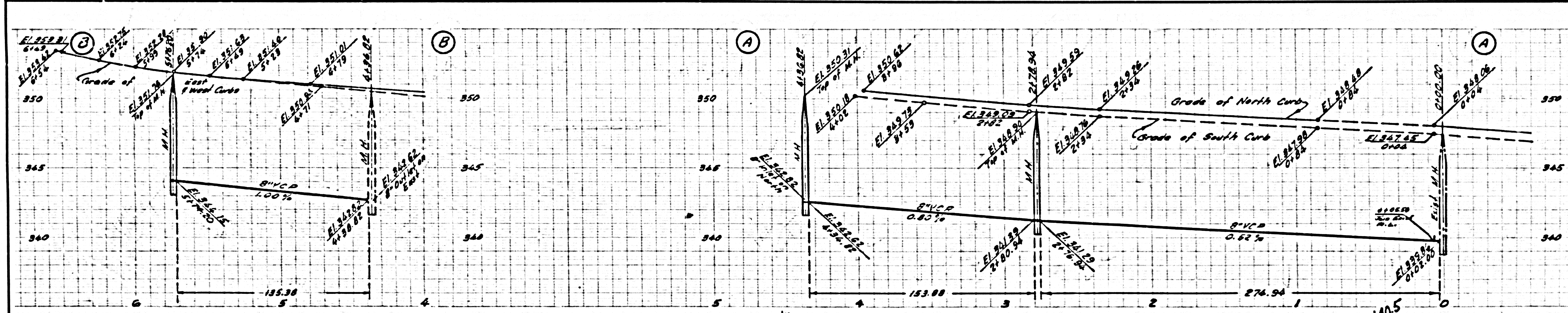
NO CHARGE FOR CONNECTIONS

23,724



NO CHARGE FOR CONNECTIONS

23,725



U.S. GEOLOGICAL SURVEY

P.C. 3993