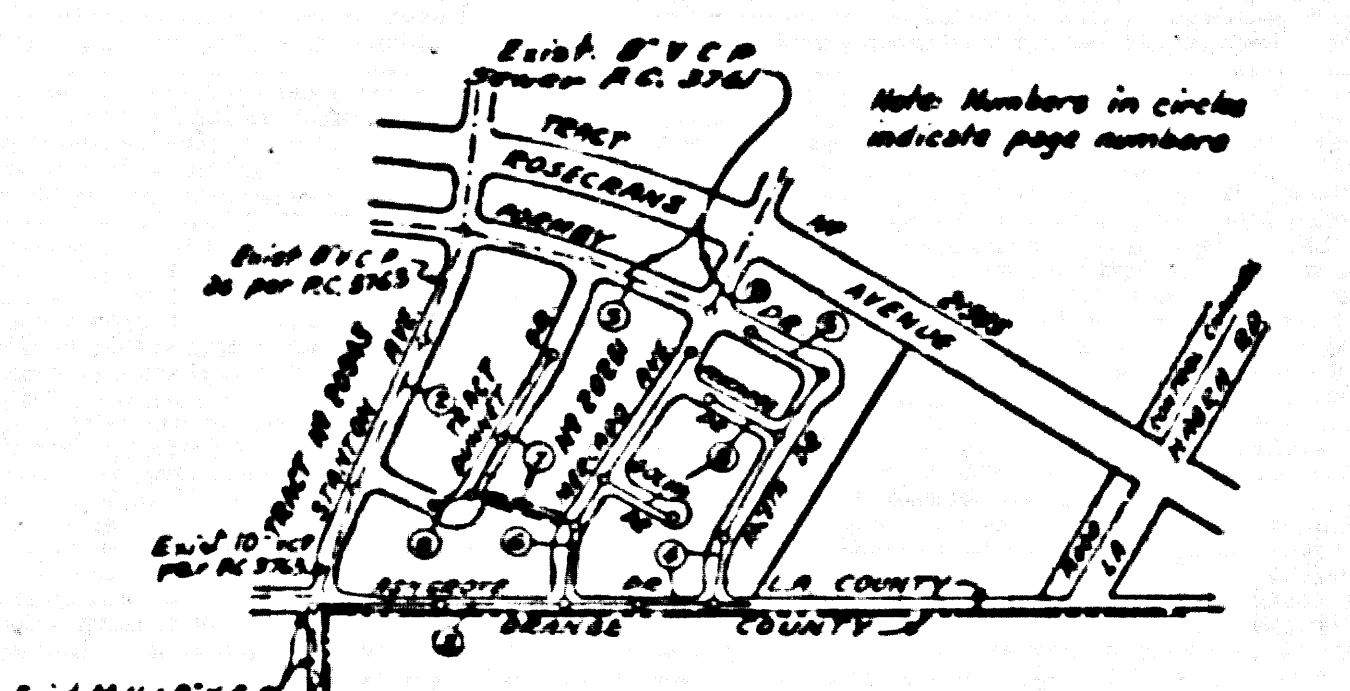


R.M. 3-2 Co. Surv. F.B. 1204-6 1932 Adj. El. 109.862  
 Stake Ed. of Luther Ave. A Std. County Surveyor Monument  
 marked 25,980 set in concrete 16" below the surface of the  
 intersection of the center line of Luther Ave. & the center  
 line of Alondra Blvd. in a well cut through the pavement & protected  
 by a cast iron cover marked County Surveyor Monument.



SHEET	FRAMES
1	1-6
2	3-8

NOTE:  
 THE CONTRACTOR SHALL NOTIFY THE CONSTRUCTION AND  
 STORM DRAIN DIVISION BY TELEPHONE, MADISON 9-4747,  
 EXT. 367 AT LEAST 24 HOURS BEFORE STARTING ANY  
 WORK UNDER THIS CONTRACT.

Trim Line 7

**NORWALK BLDG. DIST. # 4.2**

- NOTE:**  
 Provide stakes on the property lines or property lines produced at right angles to the sewer line at the center line of each manhole.  
 No representative of the County Engineer will survey or layout any portion of the work.  
 The owner or his authorized representative shall furnish the County Engineer with grade sheets and stations for all house laterals and Y branches and shall provide stakes for them at their proper locations with stationing plainly marked. Any change in location shall be requested in writing by the owner or his representative.  
 No revisions shall be made in these plans without the approval of the County Engineer.
1. Use standard manhole frames and covers, S-a-117.
  2. Use standard strength pipe except as noted.
  3. Use cement mortar for all vitrified clay pipe joints.
  4. Resurface all trench within paved area to meet L.A. County Road Dept. or California State Highway Dept. requirements in accordance with general.
  5. Encase four feet of sewer at points of interference with poles, S-a-119.
  6. House laterals to be constructed with inverts at property line... 6 feet below curb grade except as noted.
  7. All structures shall be brick sewer structures, S-a-104.
  8. For allowable leakage test, use Formula No. 1, Spec's. Sec. 54.
  9. Manhole tops in unimproved Right-Of-Way to be 6" above finish grade.
  10. The Contractor shall satisfy himself of all substructures and shall be responsible for their location.
  11. The Private Engineer is to furnish the House Lateral depth of the property line below the top of curb elevation for each House Lateral, on the Grade Sheet.
  12. a. No construction will be permitted in filled areas unless acceptable certification is submitted to the construction Division of the County Engineers Department that compaction is greater than 80%.  
 b. If compaction is greater than 80% grading is not required. However joint composed must be substituted for cement mortar for all joints in filled areas.  
 c. If compaction is less than 80%, the sewer must be crotched per S-a-166.

**NO CHARGE FOR CONNECTIONS**  
 L. Curtis 12-11-52

Trim Line

P.C. 3996  
 Page 1  
 Double Scale

TRACT # 20251

PRIVATE CONTRACT NO. 3996  
 W. S. J. J.

2 SHEETS

Scale: VERT. 1"=4' HORIZ. 1"=40' MAY 1956

PREPARED IN THE OFFICES OF  
**MCINTIRE & QUIROS**

*F. Quiros*  
 No. C.E. No. 8588

FOR LEGEND SEE PLAN NO. S-a-64

**NOTE:**  
 Grades to which this improvement is to be constructed are shown on plans and profiles. Grade points for top of curbs, center line of streets, or center line of alleys are shown by circles on profiles. All all points between designated points the grade shall be established so as to conform to a straight line drawn between said designated points.  
 Elevations are in feet above U.S.C. & G.S. Sea Level Datum of 1929.  
 The drawing and the data hereon are hereby made a part of the specifications.  
 Work shall be constructed according to specifications on file in the office of the County Engineer and shall be prosecuted only in the presence of the County Engineer.  
 Before work can be started, the contractor must obtain a permit to excavate in County streets from the L.A. County Road Dept., 108 W. 2nd St. and make a deposit with the County Engineer, 1st St. & 2nd St. S. Broadway, sufficient to cover the cost of construction inspection and record plans.  
 Approval of this plan by the County of Los Angeles does not constitute a representation as to the accuracy of the location of or the existence or non-existence of any underground utility, pipe, or structure within the limits of this project. This note applies to all sheets.  
 If work is to be done on a State Highway, a permit must be obtained from the State of California, Division of Highways, 1300 South Spring Street.

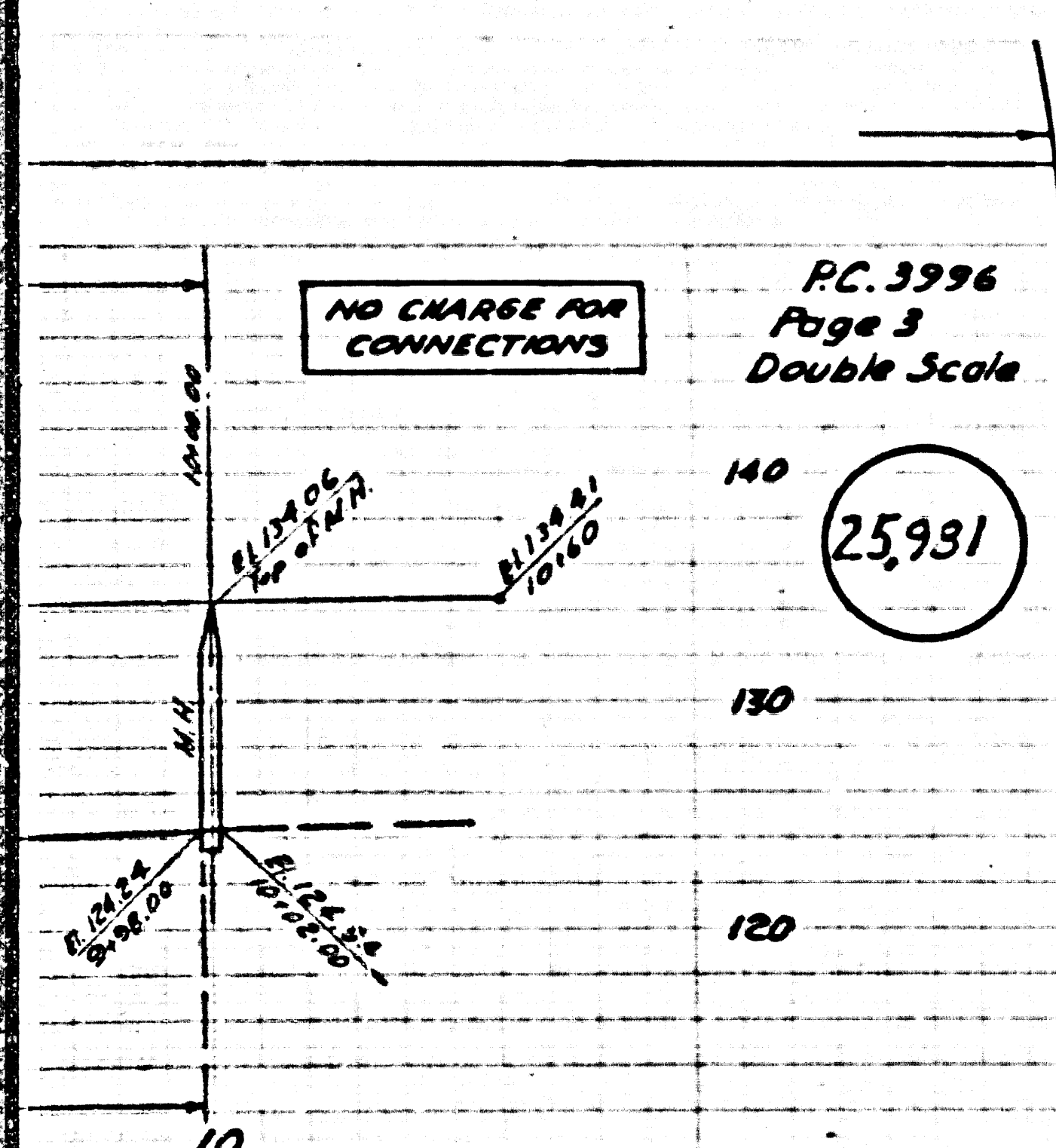
**COUNTY OF LOS ANGELES, CALIFORNIA**  
 Approved, Joe A. Lamb, County Engineer  
 Approved, A. M. Rawn, CHIEF ENGR. CO. SAN DIST. NO. 11  
 Checked by: *L. Curtis*  
 Checked by: *A. M. Rawn*  
 Drawn by: *A. K. Onda 12-11-52*  
 Office of County Engineer, Dep. C.E. No. 3406.

TRACT # 20251

P.C. 3996

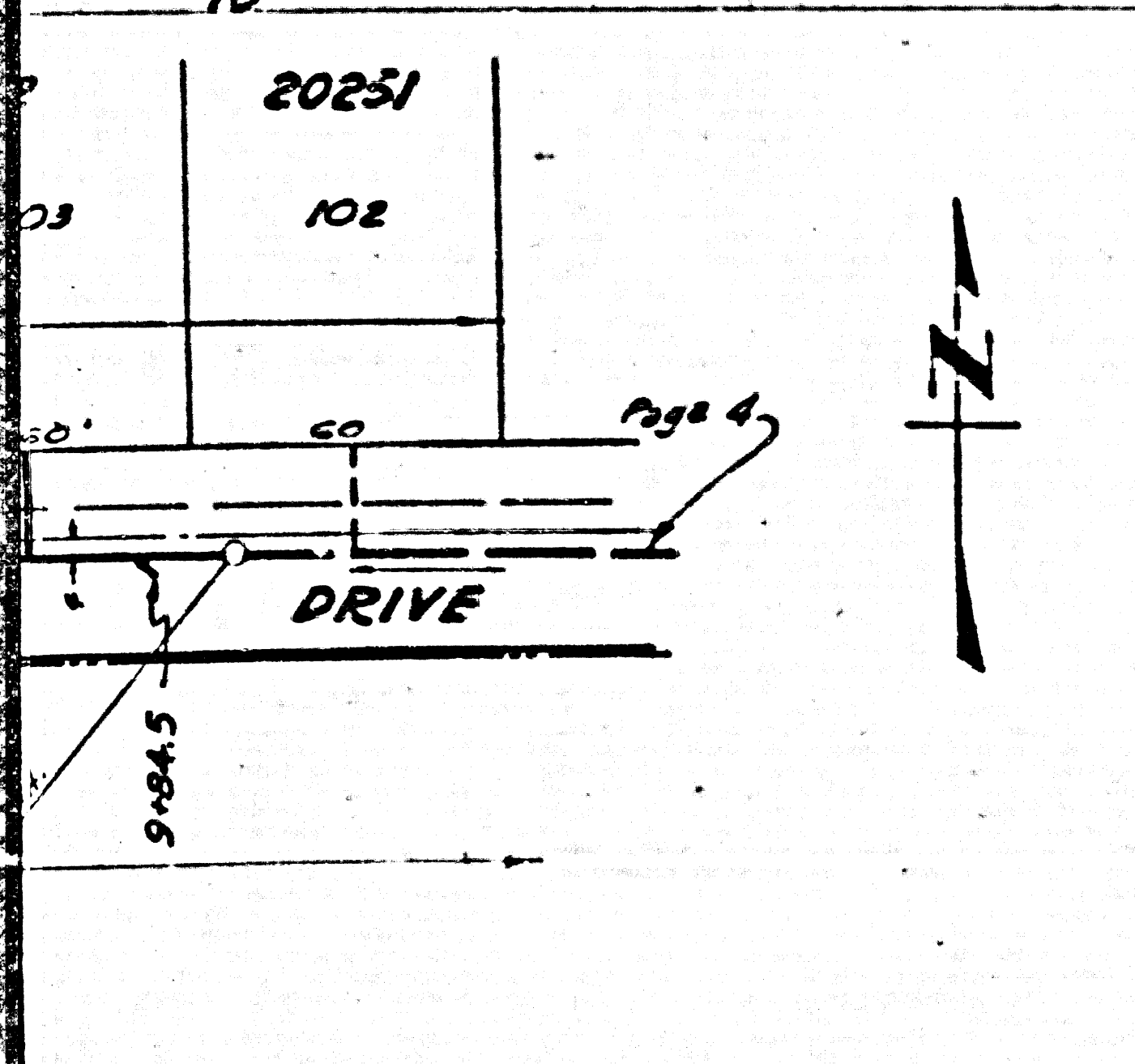
31/2





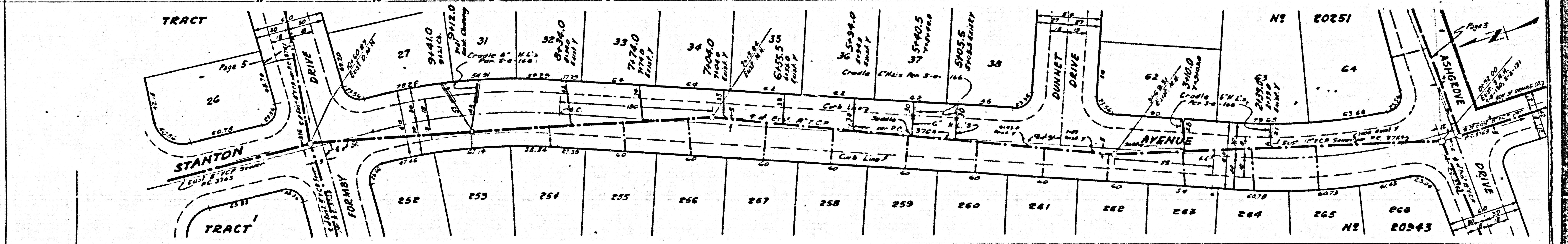
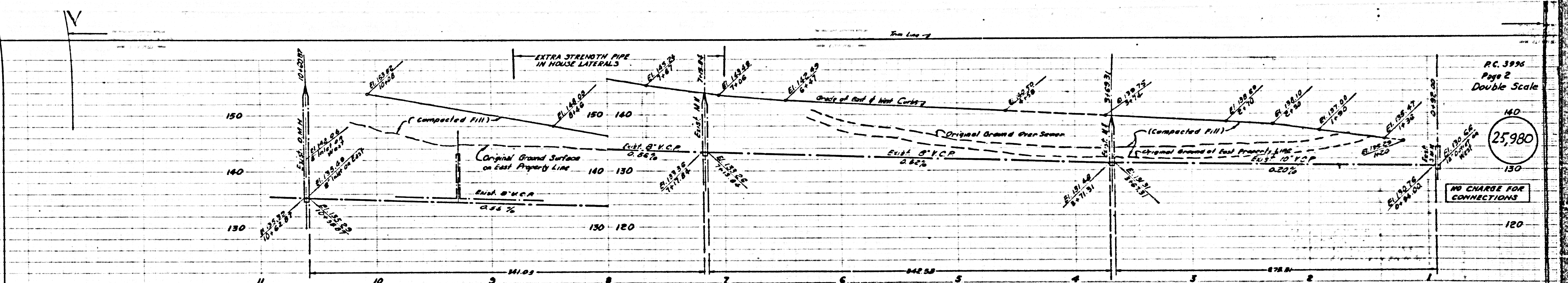
PC. 3996  
Page 3  
Double Scale

25,931



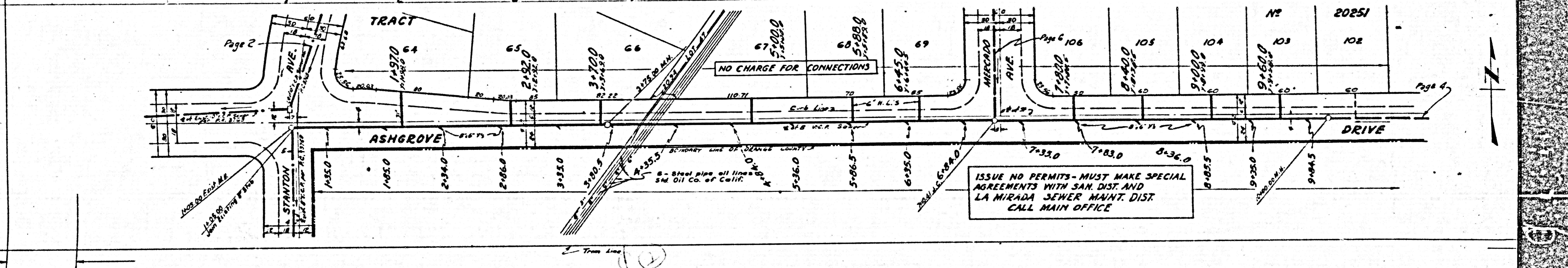
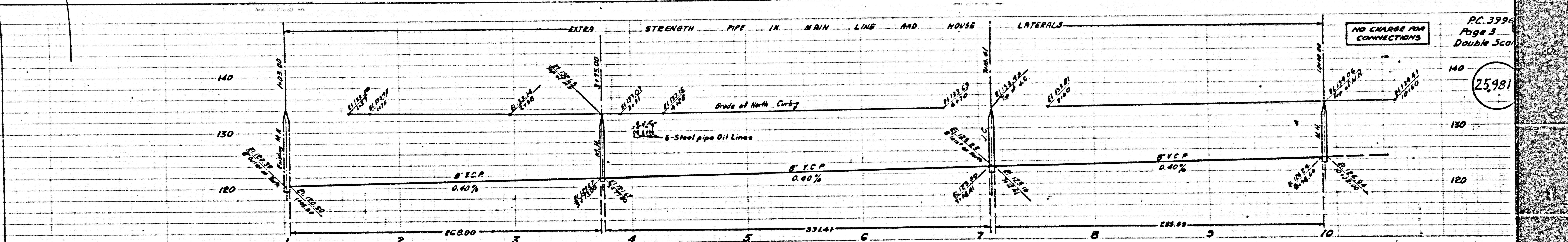
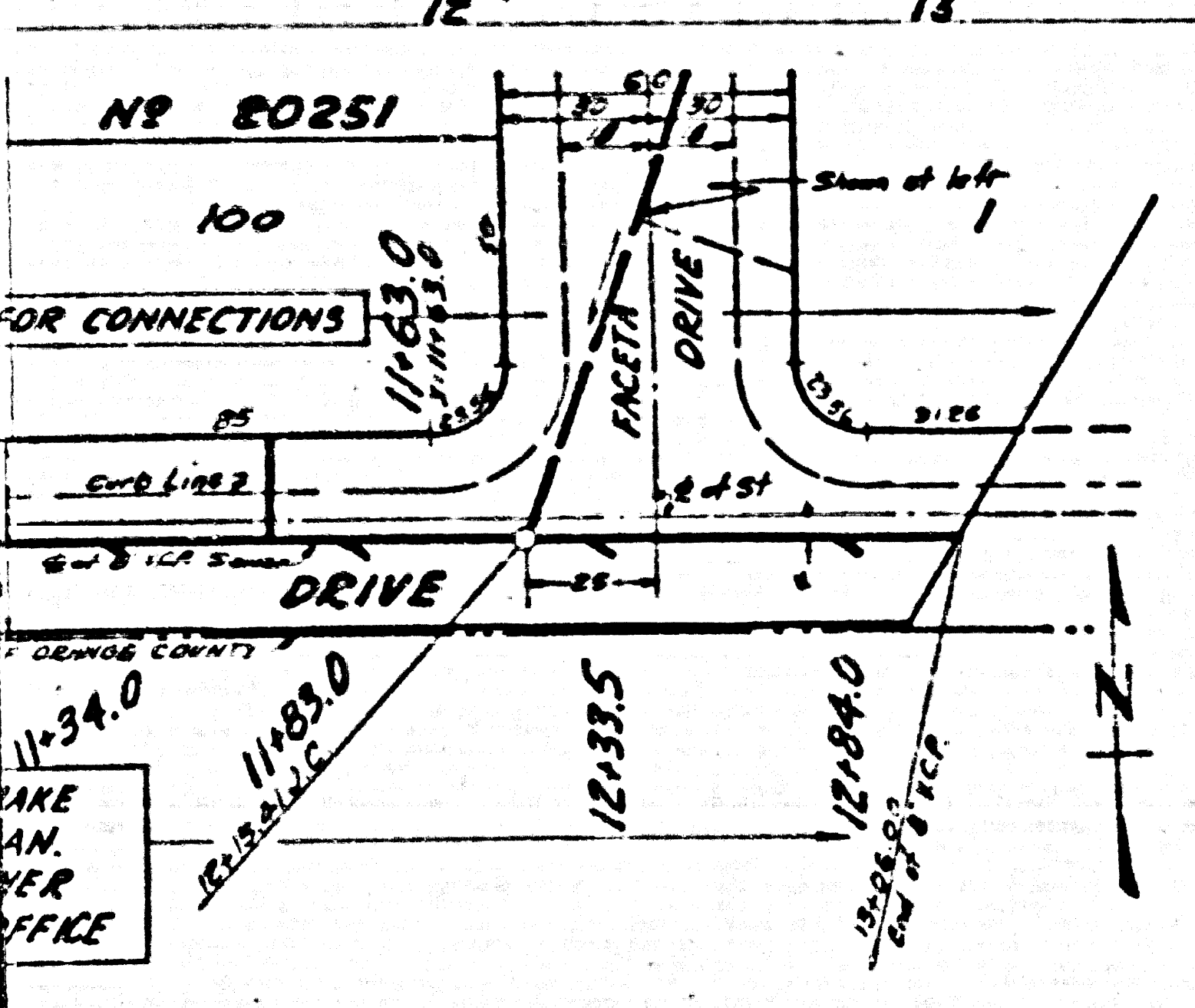
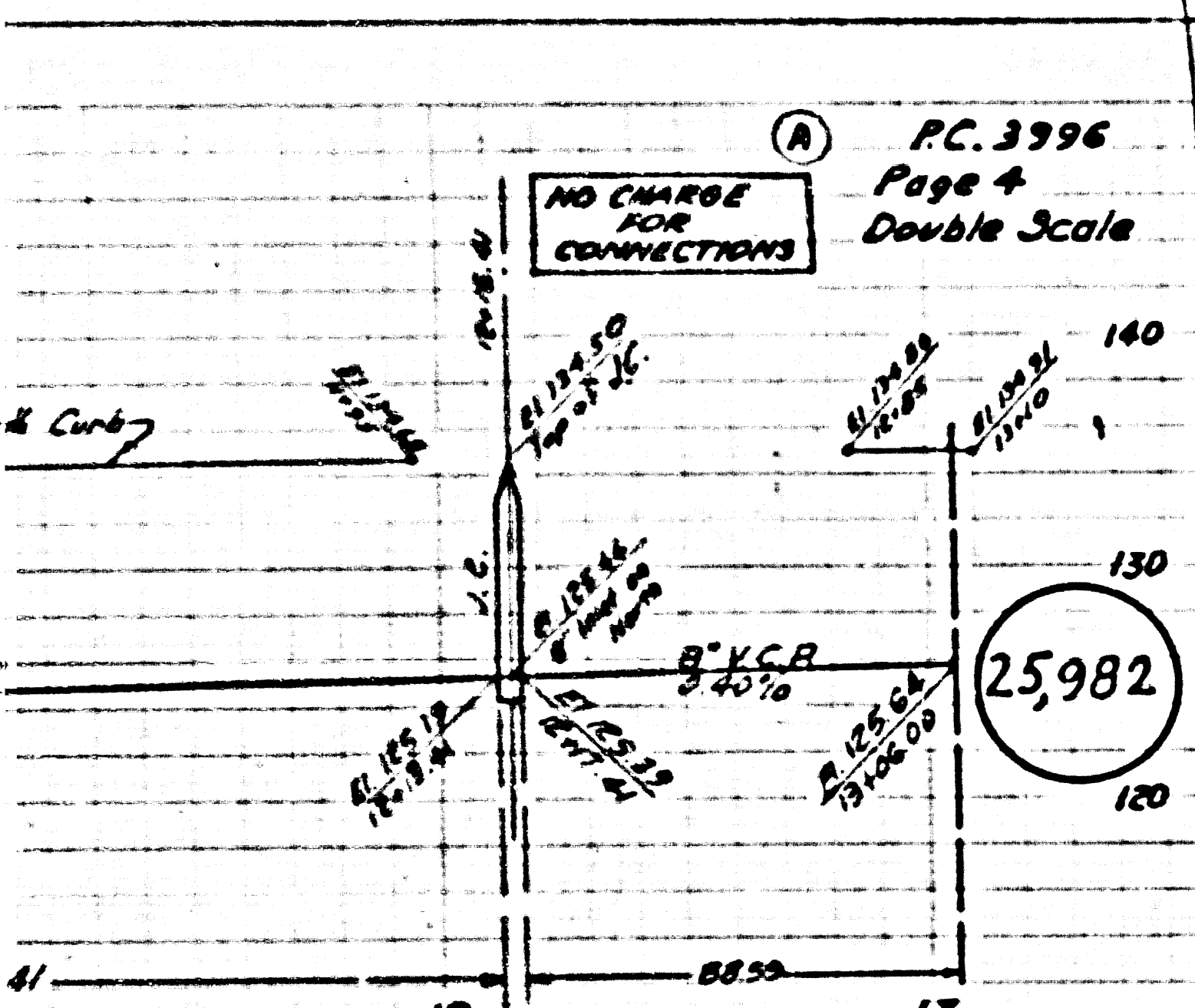
PC. 3996  
Page 2  
Double Scale

25,980

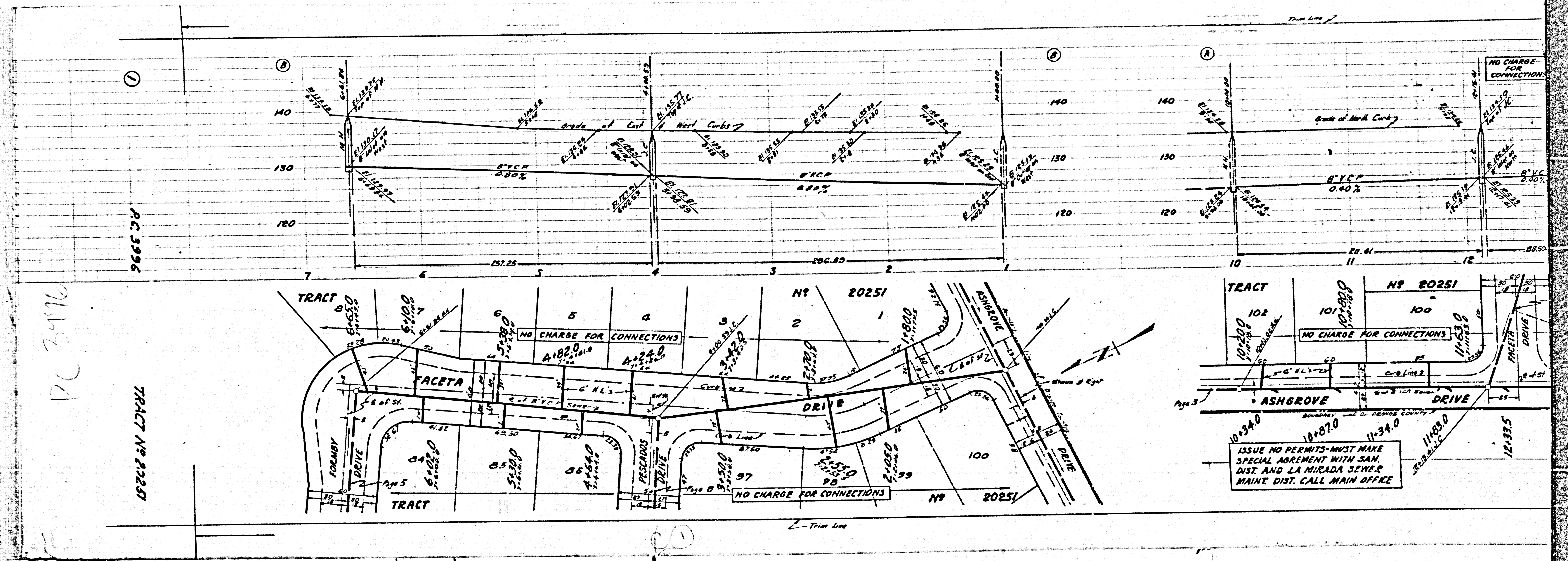


25









PC 3976

TRACT NO. 20251

ISSUE NO PERMITS - MUST MAKE SPECIAL AGREEMENT WITH SAN. DIST. AND LA MIRADA SEWER MAINT. DIST. CALL MAIN OFFICE

Trim Line

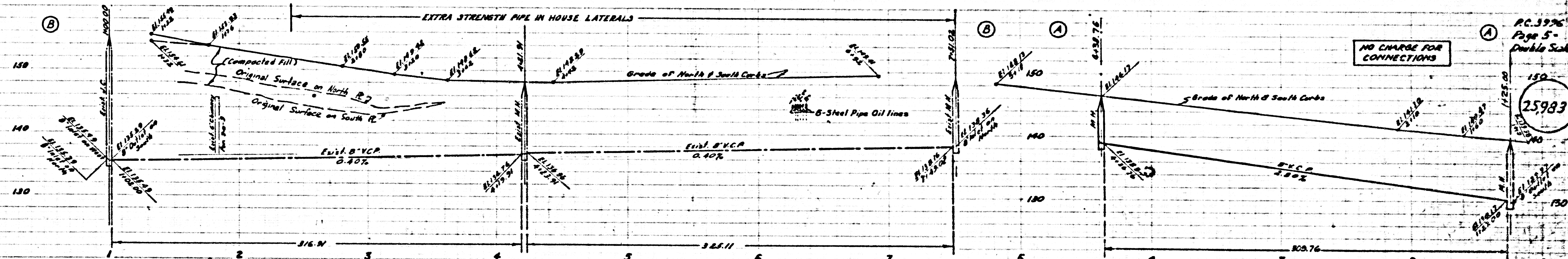


PC 3996  
Page 6  
Double Scale

NO CHARGE FOR CONNECTIONS

25984

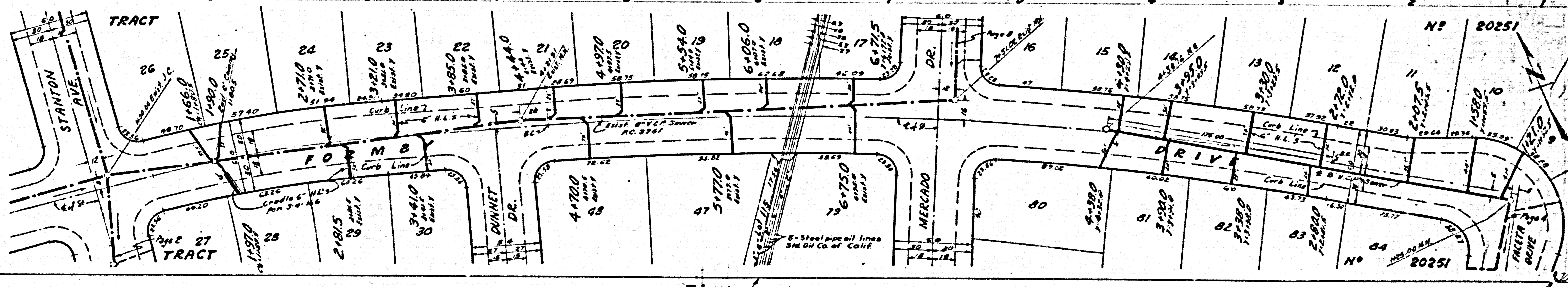
Trim Line



NO CHARGE FOR CONNECTIONS

PC 3996  
Page 5  
Double Scale

25983



Trim Line



PC 3996  
Page 7  
Double Scale

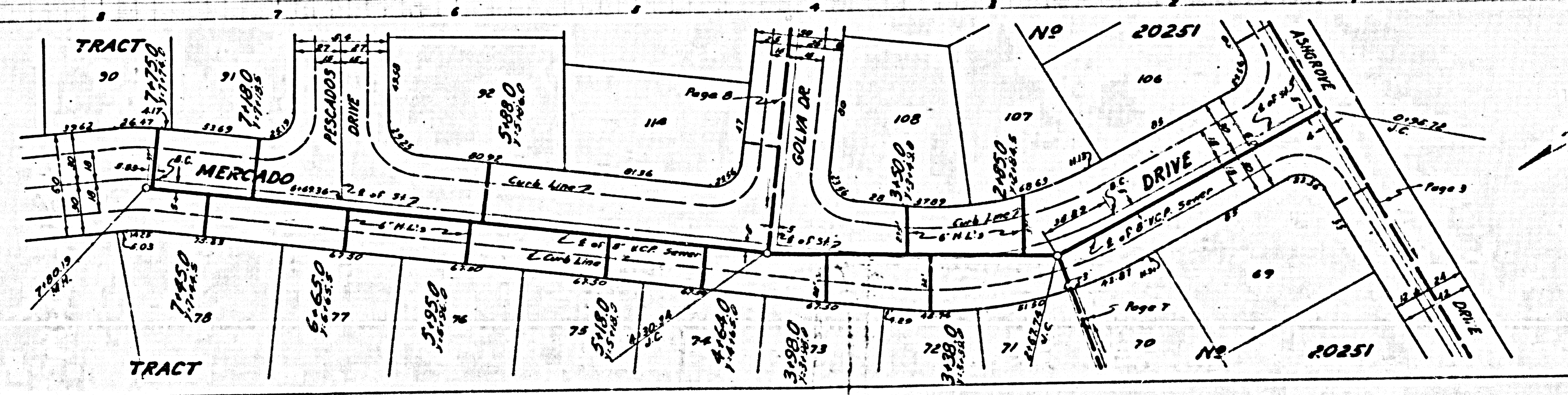
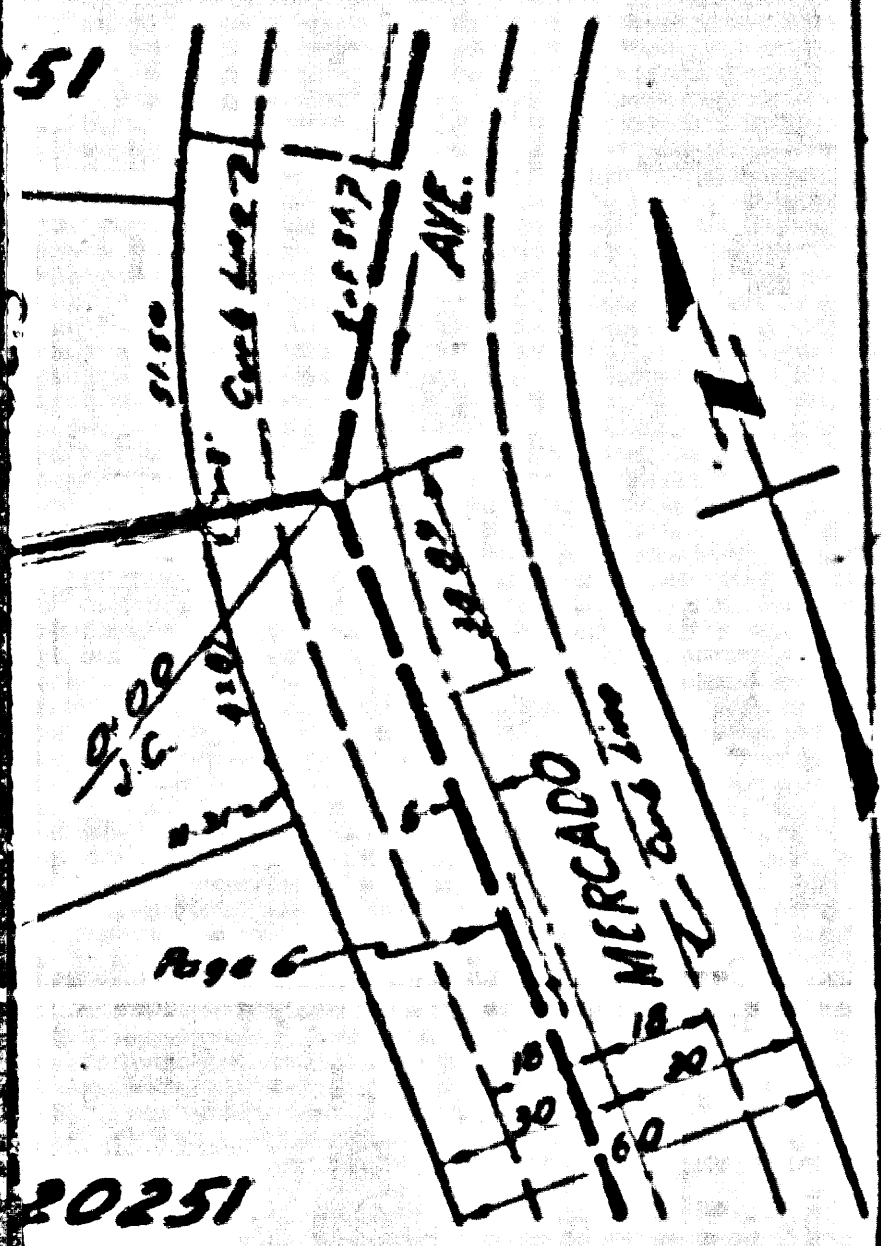
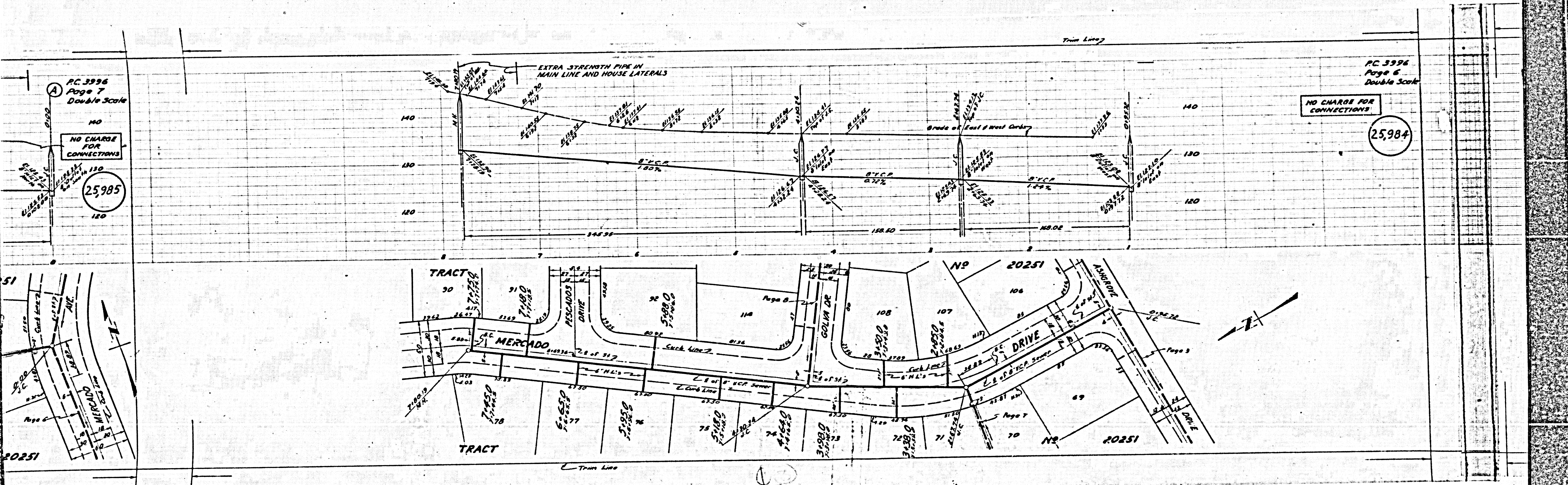
NO CHARGE FOR CONNECTIONS

25985

PC 3996  
Page 6  
Double Scale

NO CHARGE FOR CONNECTIONS

25984





PC. 3996  
Page B  
Double Scale

NO CHARGE FOR CONNECTIONS

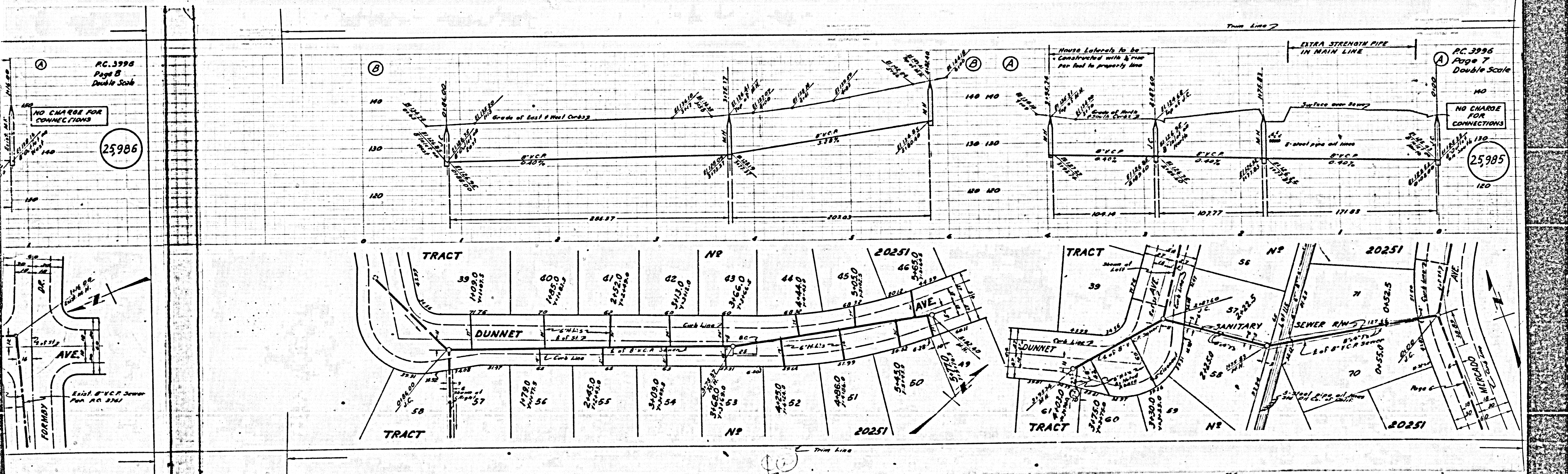
25986

PC. 3996  
Page 7  
Double Scale

PC. 3996  
Page 7  
Double Scale

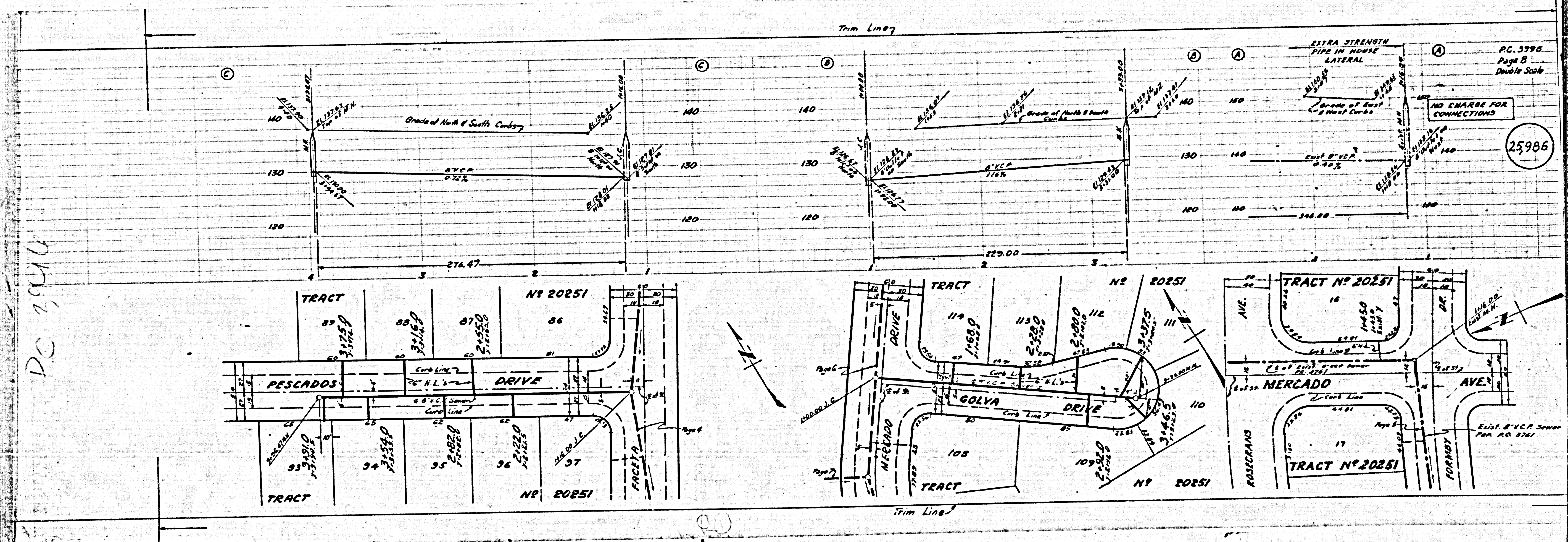
NO CHARGE FOR CONNECTIONS

25985





PC 3996



PC 3996  
Page B  
Double Scale  
25986

