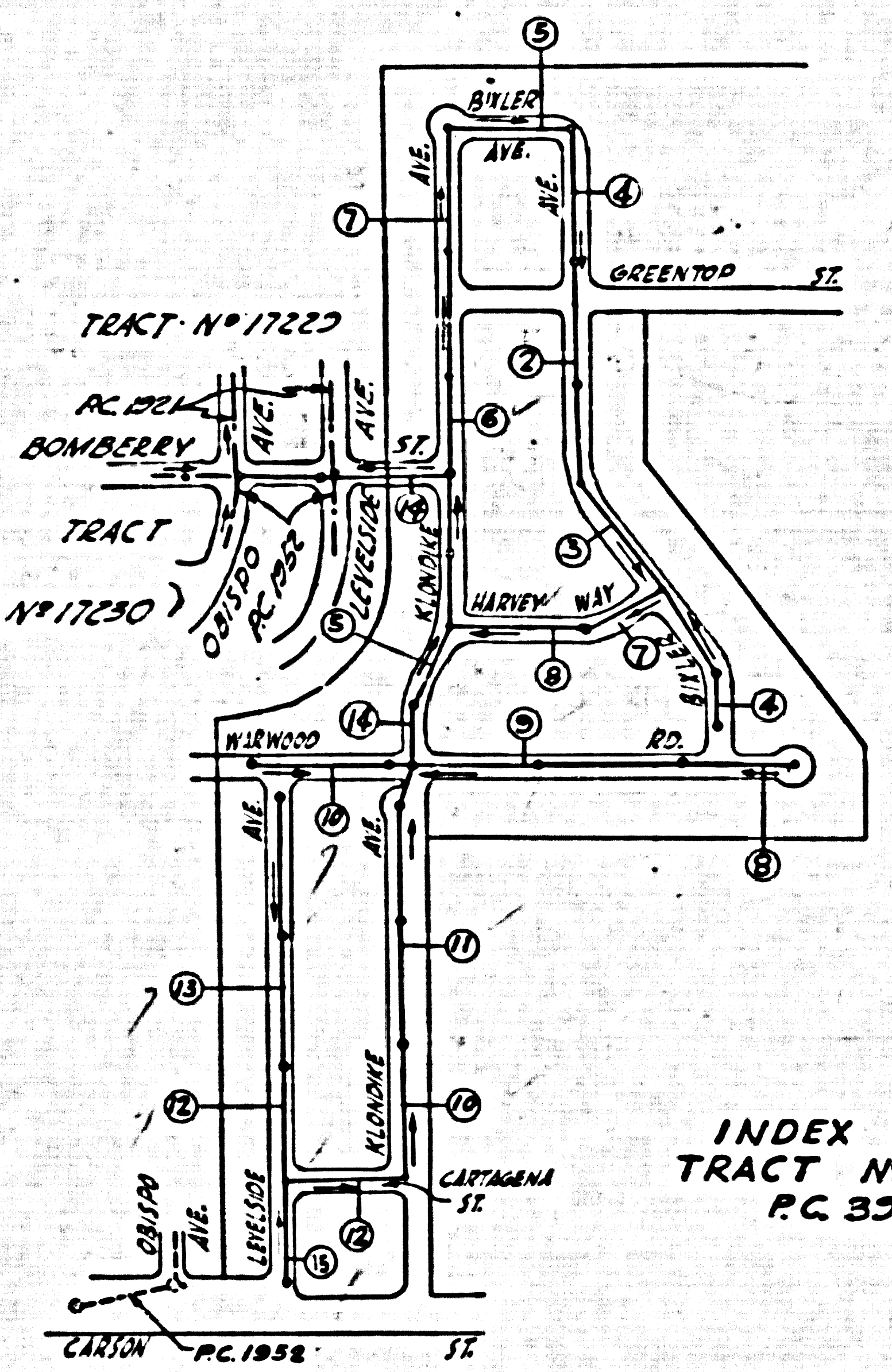


BENCH MARK
SY-163 PAGE 76
ELEV 55.223
NW. 1/4 Straddler Near
& Intersection of South St.
and Lakewood Blvd.



NO CHARGE FOR
CONNECTIONS
-S.K. O'Neil 6-4-56

INDEX MAP
TRACT NO. 22073
P.C. 3997

BELFLOWER BLDG. DIST. NO. 4

- NOTES
1. HOUSE STAKES ON THE PROPERTY LINE OR PROPERTY LINES PRODUCED AT RIGHT ANGLES TO THE SEWERS LINE AT THE CENTER LINE OF EACH MANHOLE.
 2. NO REPRESENTATIVE OF THE CITY ENGINEER WILL SURVEY OR LAYOUT ANY PORTION OF THE WORK.
 3. THE OWNER OR HIS AUTHORIZED REPRESENTATIVE SHALL FURNISH THE CITY ENGINEER WITH GRADE SHEETS AND STATION FOR ALL HOUSE LATERALS AND Y BRANCHES AND SHALL PROVIDE STAKES FOR THEM AT THEIR PROPER LOCATIONS WITH STATIONING PLAINLY MARKED. ANY CHANGE IN LOCATION SHALL BE INDICATED BY THE OWNER OR HIS REPRESENTATIVE.
 4. NO REVISIONS SHALL BE MADE IN THESE PLANS WITHOUT THE APPROVAL OF THE CITY ENGINEER.
 5. USE STANDARD MANHOLE FRAMES AND COVERS, S.A. 117, EXCEPT AS NOTED.
 6. USE STANDARD STRENGTH PIPE EXCEPT AS NOTED.
 7. USE CEMENT PLASTER FOR ALL WITHIN CLAY PIPE JOINTS.
 8. RESURFACE ALL TRENCH WITHIN PAVED AREAS TO MEET L.A. COUNTY ROAD DEPT. OR CALIF. STATE HIGHWAY DEPT. REQUIREMENTS IN ACCORDANCE WITH PERMITS.
 9. EXCAVATE FOUR FEET OF SEWER AT POINTS OF INTERFERENCE WITH POLES, S.A. 119.
 10. HOUSE LATERALS TO BE CONSTRUCTED WITH INVERTS AT PROPERTY LINE 9" FEET BELOW CURB GRADE EXCEPT AS NOTED.
 11. ALL STRUCTURES SHALL BE BRICK SEWER STRUCTURES, S.A. 194, EXCEPT AS NOTED.
 12. FOR ALLOWABLE LEAKAGE TEST USE FORMULA NO. 1 SPEC. SEC. 94
 13. MANHOLE TOPS IN UNIMPROVED AREAS OF WAY TO BE 6" ABOVE FINISHED GRADE.
 14. THE PRIVATE ENGINEER IS TO FURNISH THE HOUSE LATERAL DEPTH AT THE PROPERTY LINE BELOW THE TOP OF CURB ELEVATION FOR EACH HOUSE LATERAL, ON THE GRADE SHEET.

ENGINEERING SERVICE CORPORATION
1127 W. WASHINGTON BLVD
LOS ANGELES 15, CALIF. PH 9-7281

DESIGNED BY	TRACED BY
DRAWN BY	CHKD. BY
INSTRUMENTED BY	APPROVED
DATE	REG. C.E. # 3497
SCALE	
DATE	

518 STRUCTURES CKD
W-3 NO. 106 43 64N 106 43 64N
507F/106 APRIL 1956 AS NOTED

PROFILE ALIGNMENT GRADE OF P.C. 3997
SANITARY SEWERS PAGE 1

TRACT NO. 22073

PRIVATE CONTRACT NO. 3997

W.S. 30
8 SHEETS, 15 PAGES
SCALE: 1" = 4' HORIZ. 1" = 4' VERT. APRIL, 1956
PREPARED IN THE OFFICES OF
ENGINEERING SERVICE CORP.

BY: S.K. O'Neil
REG. C.E. NO. 3492
FOR LEGEND SEE PLAN NO. S.A. 64

NOTES

GRADE TO WHICH THIS IMPROVEMENT IS TO BE CONSTRUCTED ARE SHOWN ON PLANS AND PROFILE GRADE POINTS FOR TOP OF CURB, CENTER LINE OF STREETS, OR CENTER LINE OF ALLEYS ARE SHOWN BY CIRCLES ON PROFILES. AT ALL POINTS BETWEEN DESIGNATED POINTS THE GRADE SHALL BE ESTABLISHED SO AS TO CONFORM TO A STRAIGHT LINE BETWEEN SAID DESIGNATED POINTS.

ELEVATIONS ARE IN FEET ABOVE U.S.C. & G.S. SEA LEVEL DATUM OF 1929.

THIS DRAWING AND THE DATA HEREON AND HERETO MADE A PART OF THE SPECIFICATIONS. WORK SHALL BE CONSTRUCTED ACCORDING TO SPECIFICATIONS ON FILE IN THE OFFICE OF THE CITY ENGINEER AND SHALL BE PROSECUTED ONLY IN THE PRESENCE OF THE CITY ENGINEER.

BEFORE WORK CAN BE STARTED, THE CONTRACTOR MUST OBTAIN A PERMIT TO EXCAVATE IN COUNTY STREETS FROM THE L.A. COUNTY ROAD DEPT., 100 W. 3RD ST. AND MAKE A DEPOSIT WITH THE COUNTY ENGINEER, ROOM 254 MAIN AMERICAN BUILDING 133 SO. BROADWAY SUFFICIENT TO COVER THE COST OF CONSTRUCTION INSPECTION AND RECORD PLANS.

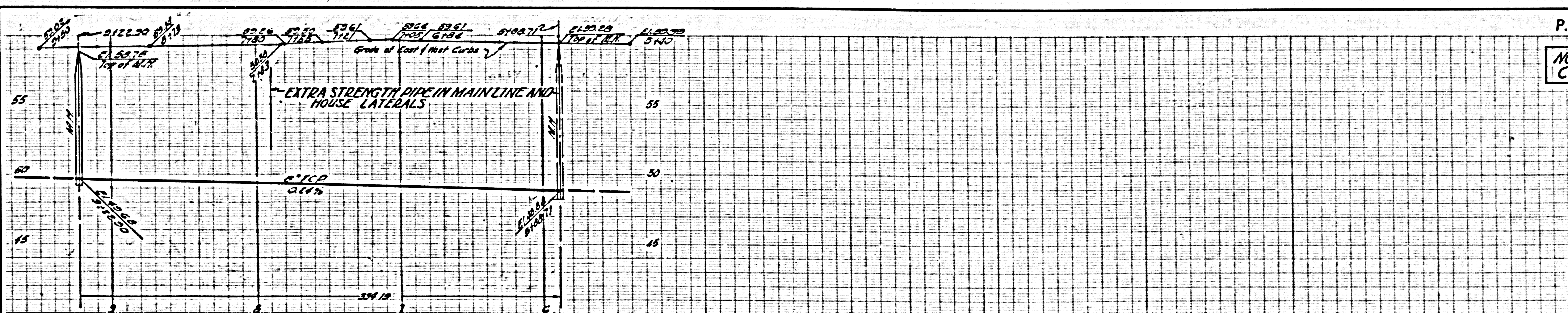
APPROVAL OF THIS PLAN BY THE CITY ENGINEER DOES NOT CONSTITUTE A REPRESENTATION AS TO THE ACCURACY OF THE LOCATION OF OR THE EXISTENCE OR NON-EXISTENCE OF ANY UNDERGROUND UTILITY PIPE, OR STRUCTURE WITHIN THE LIMITS OF THIS PROJECT. THIS NOTE APPLIES TO ALL PAGES.

IF WORK IS TO BE DONE IN A STATE HIGHWAY, A PERMIT MUST BE OBTAINED FROM THE STATE OF CALIFORNIA, DIVISION OF HIGHWAYS, 120 SOUTH SPRING STREET.

CITY OF LAKEWOOD, CALIFORNIA

APPROVED, JOHN A. LAMBE, CITY ENGINEER
APPROVED, A. M. BAWN, CHIEF ENGINEER

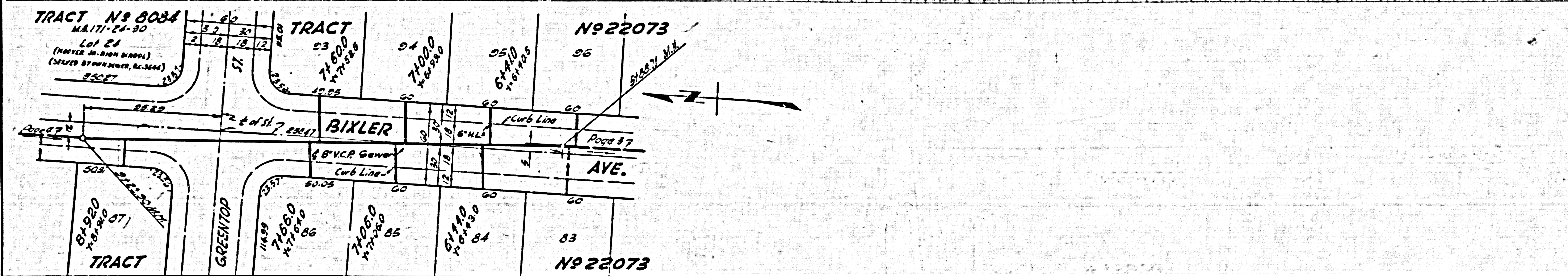
BY: S.K. O'Neil
CHIEF SANITATION ENGINEER
CHECKED BY: S.K. O'Neil 6-4-56
OFFICE OF CITY ENGINEER, REG. C.E. NO. 3496



P.C. 3997 PAGE 2

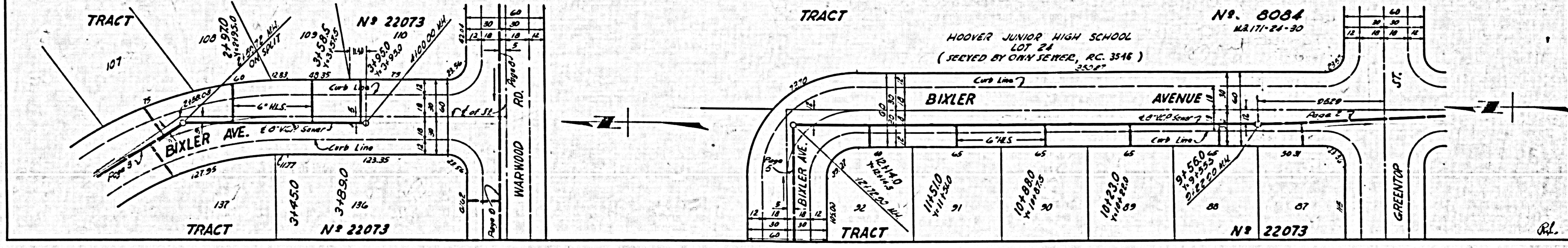
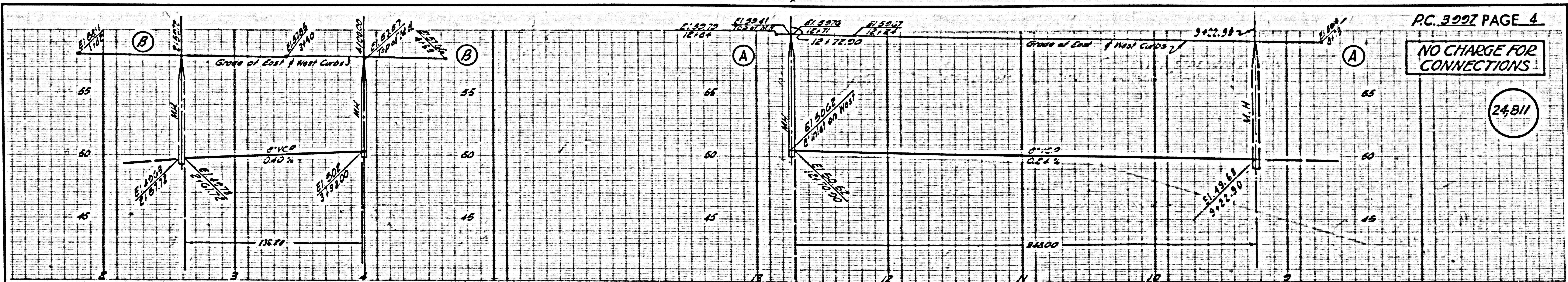
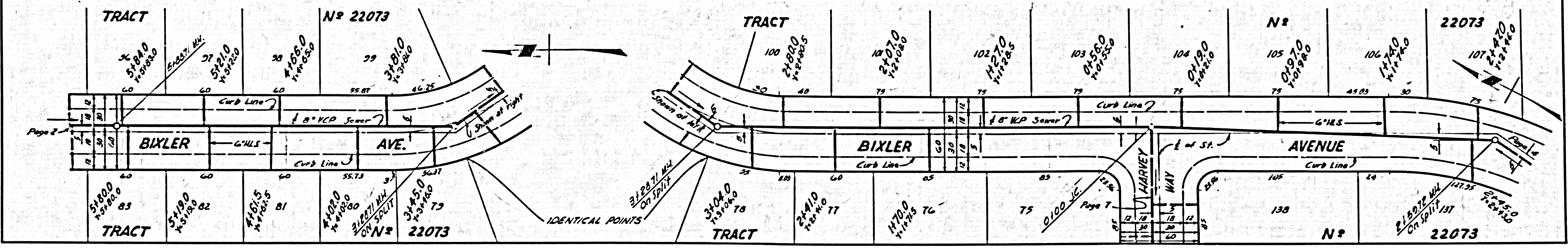
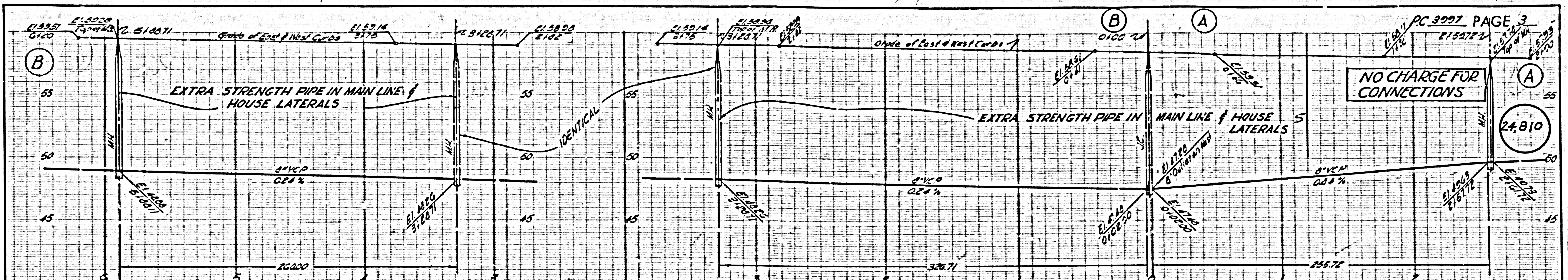
NO CHARGE FOR CONNECTIONS

24,808



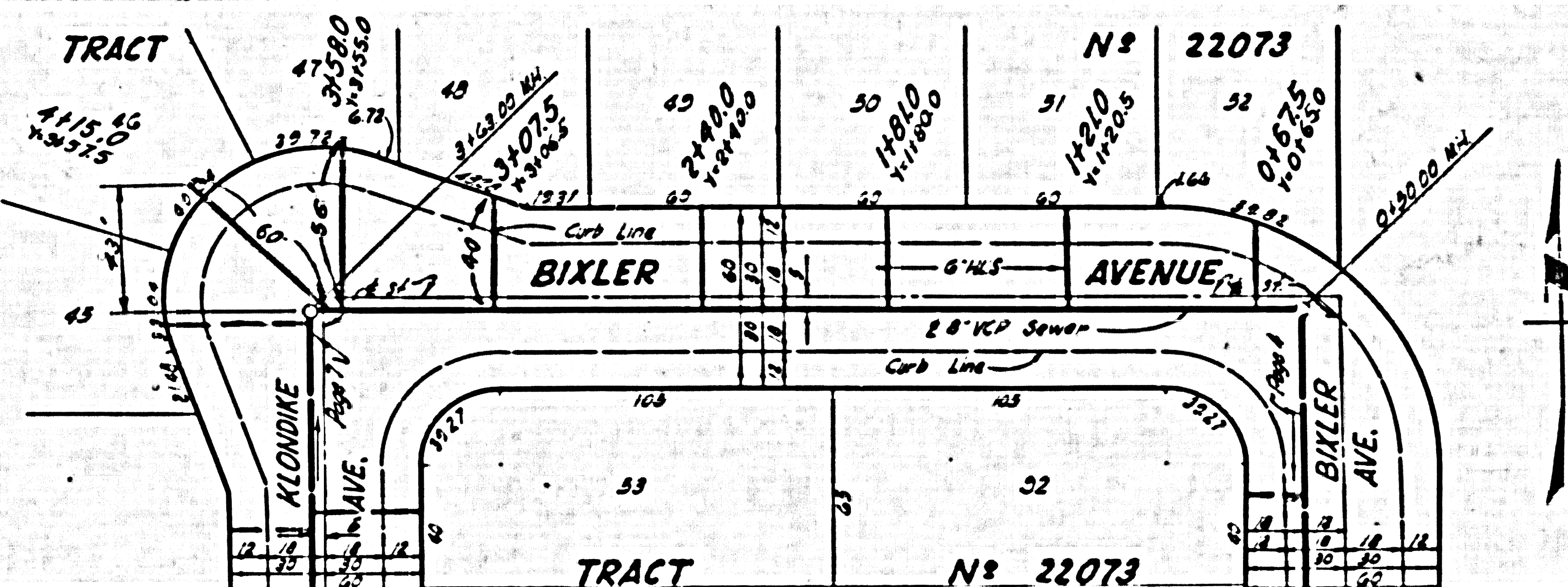
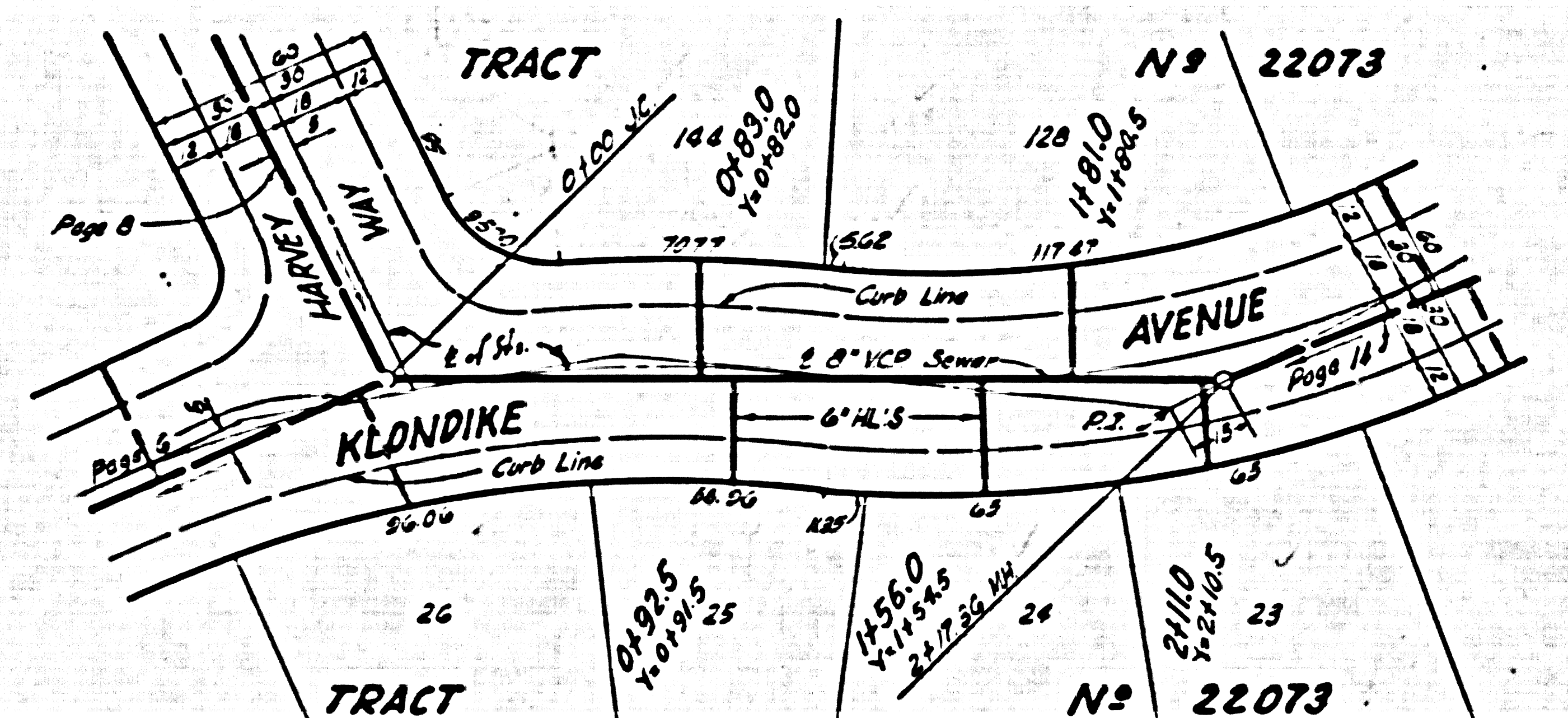
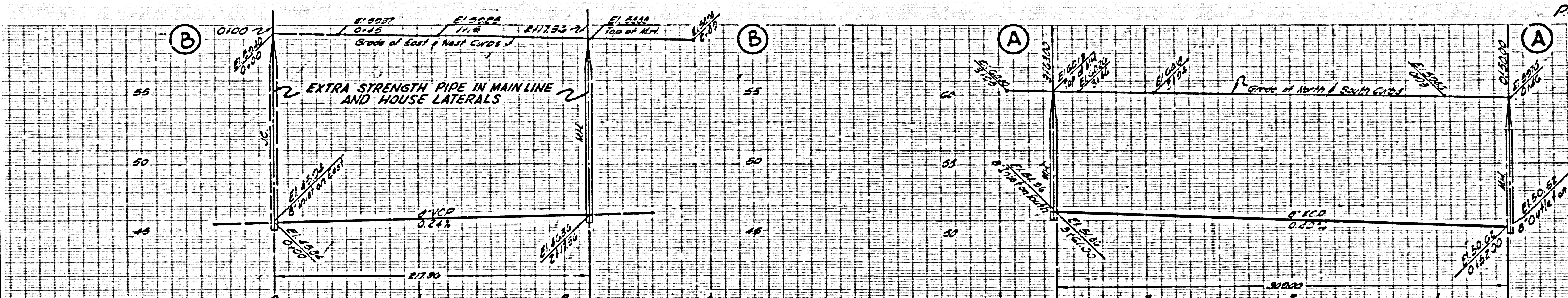
P.C. 3997

RL



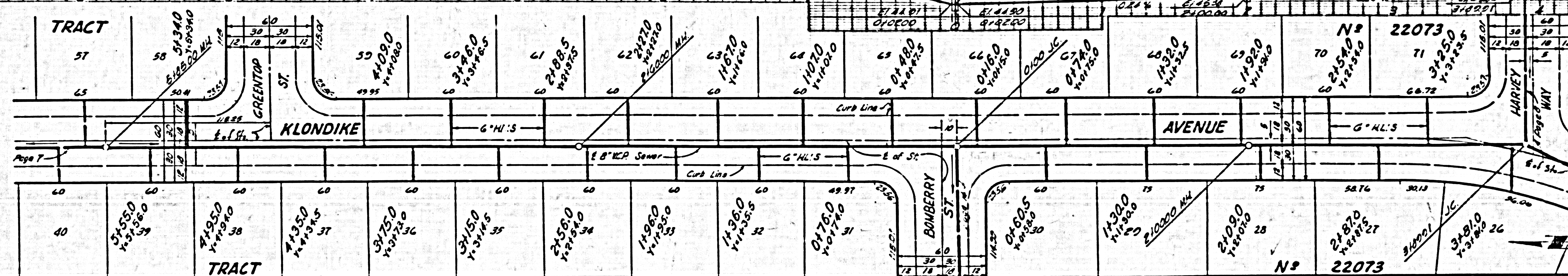
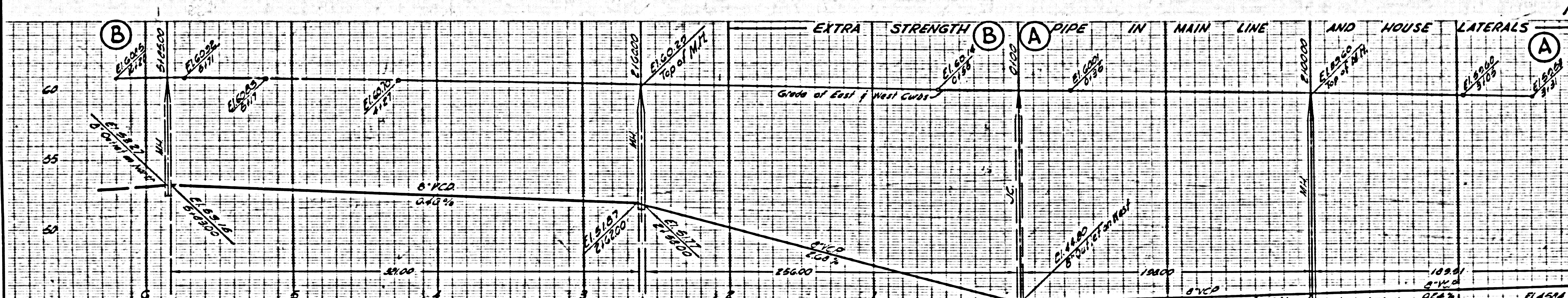
NO CHARGE FOR CONNECTIONS

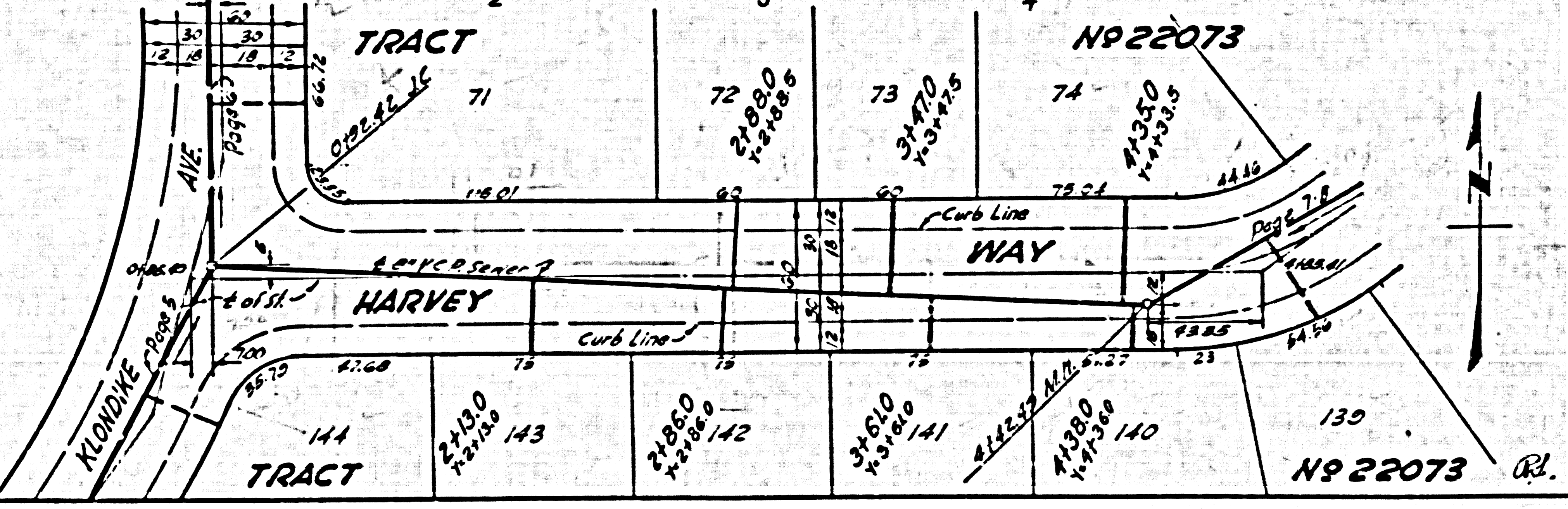
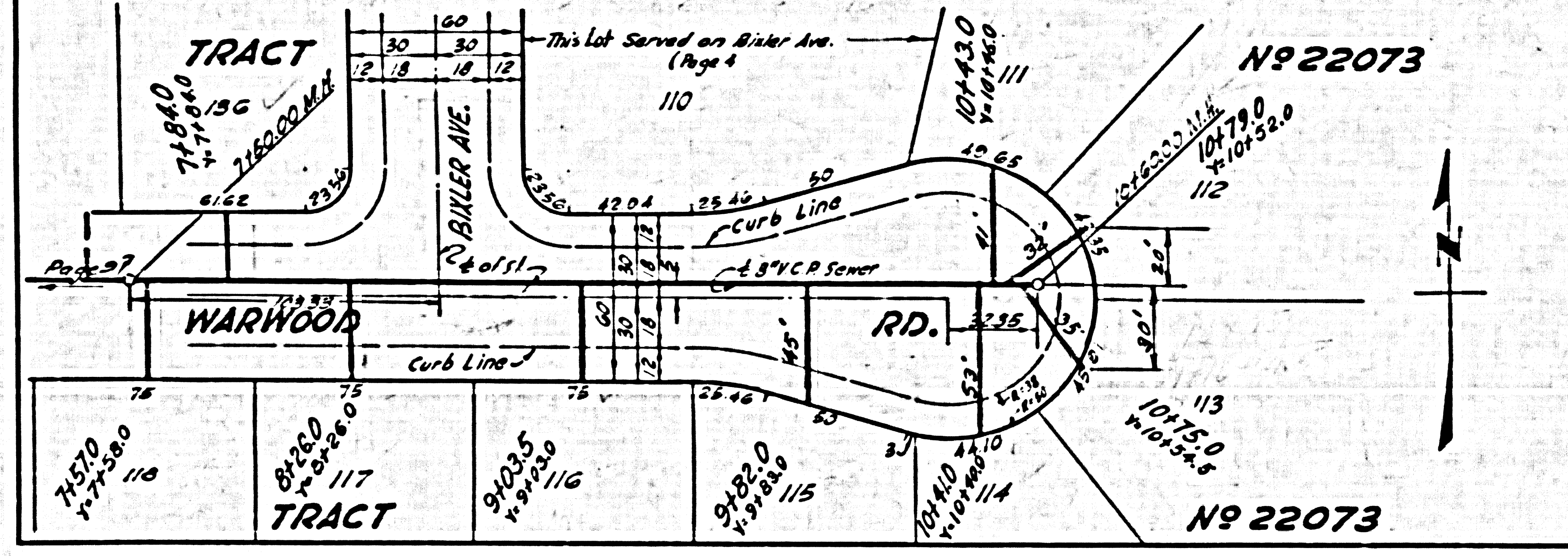
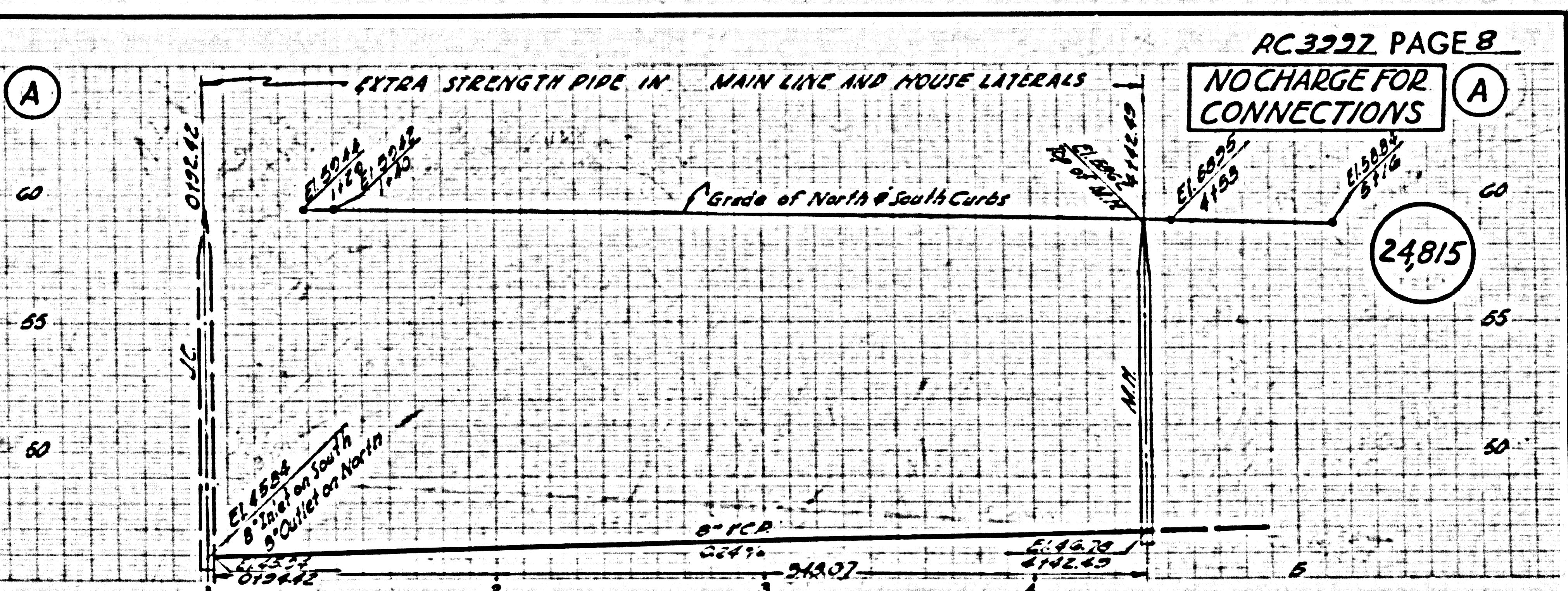
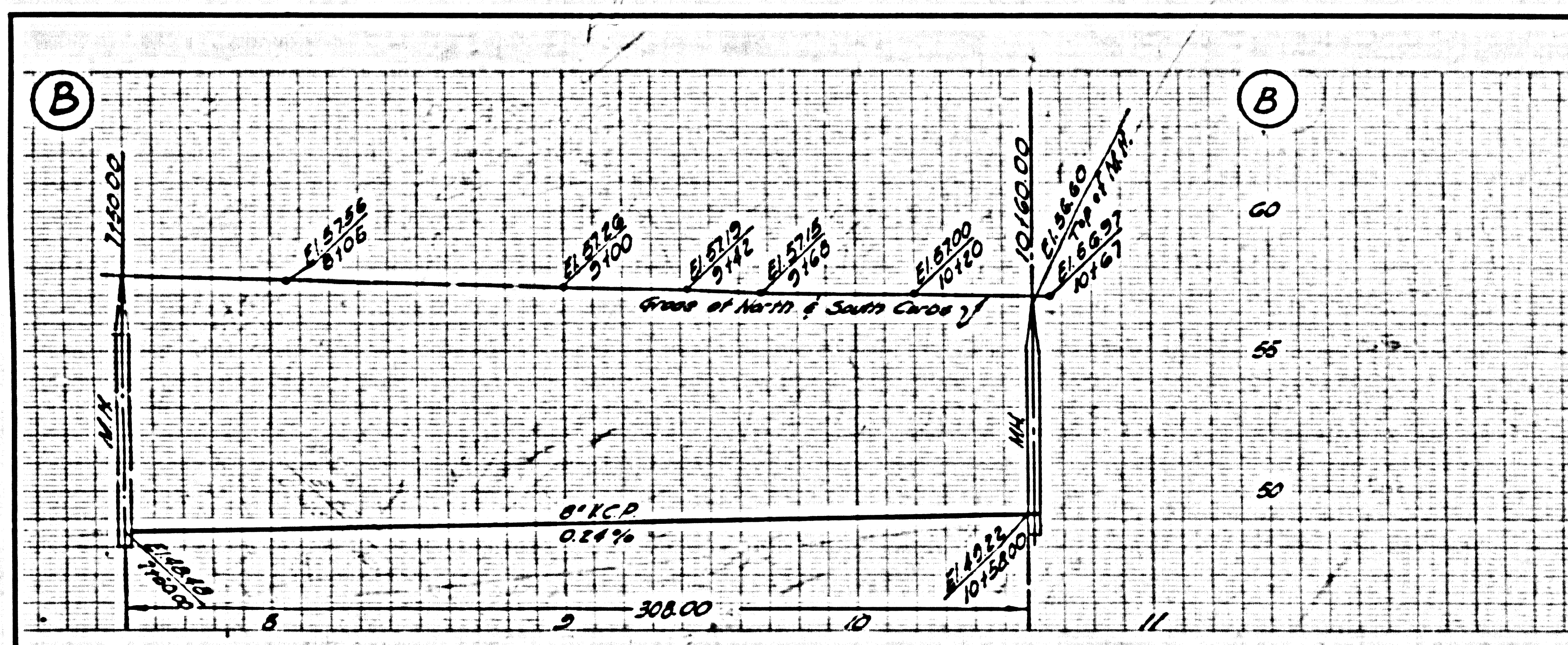
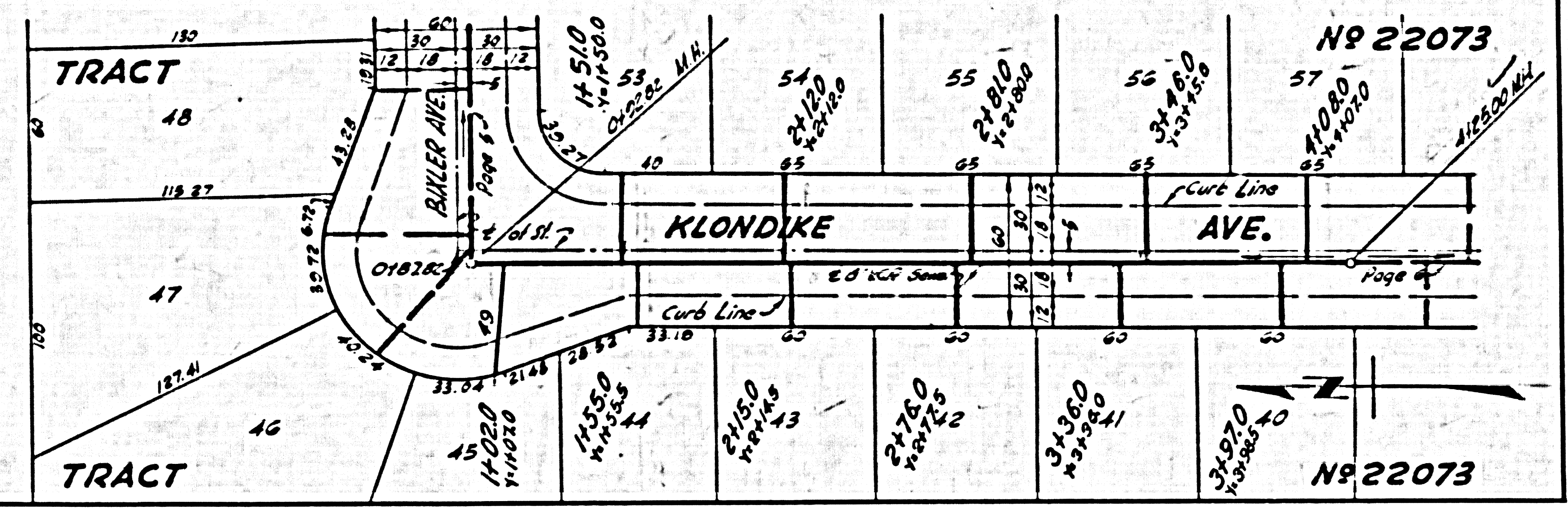
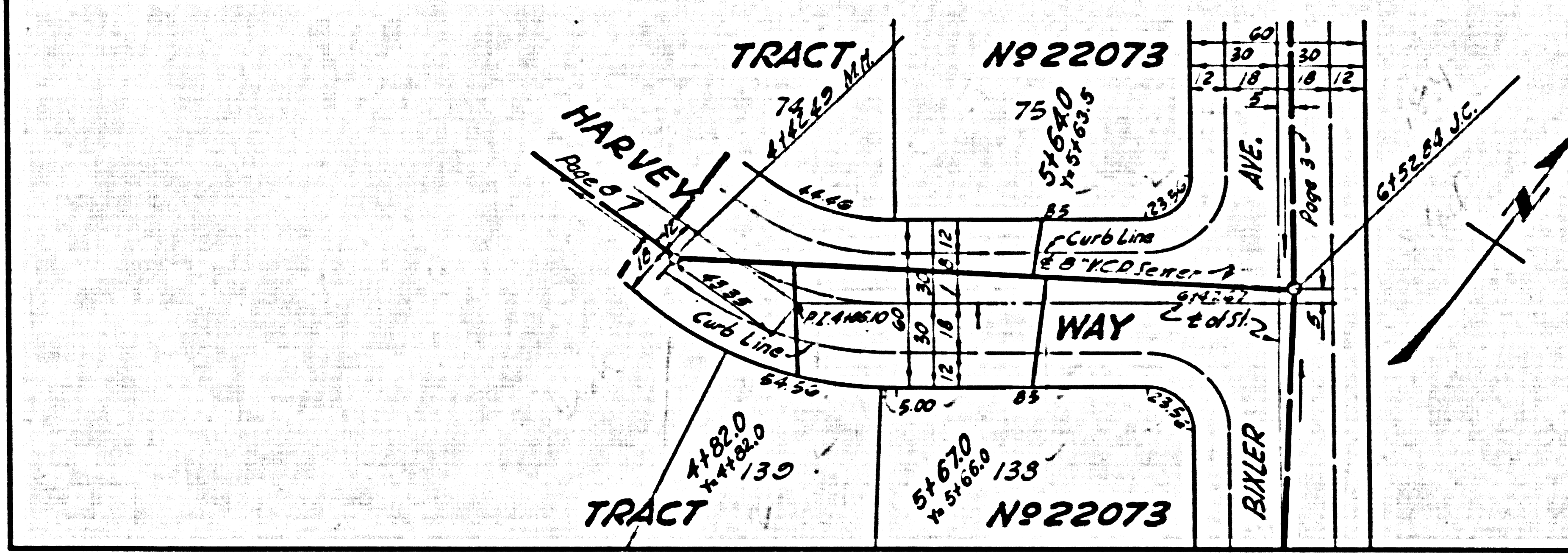
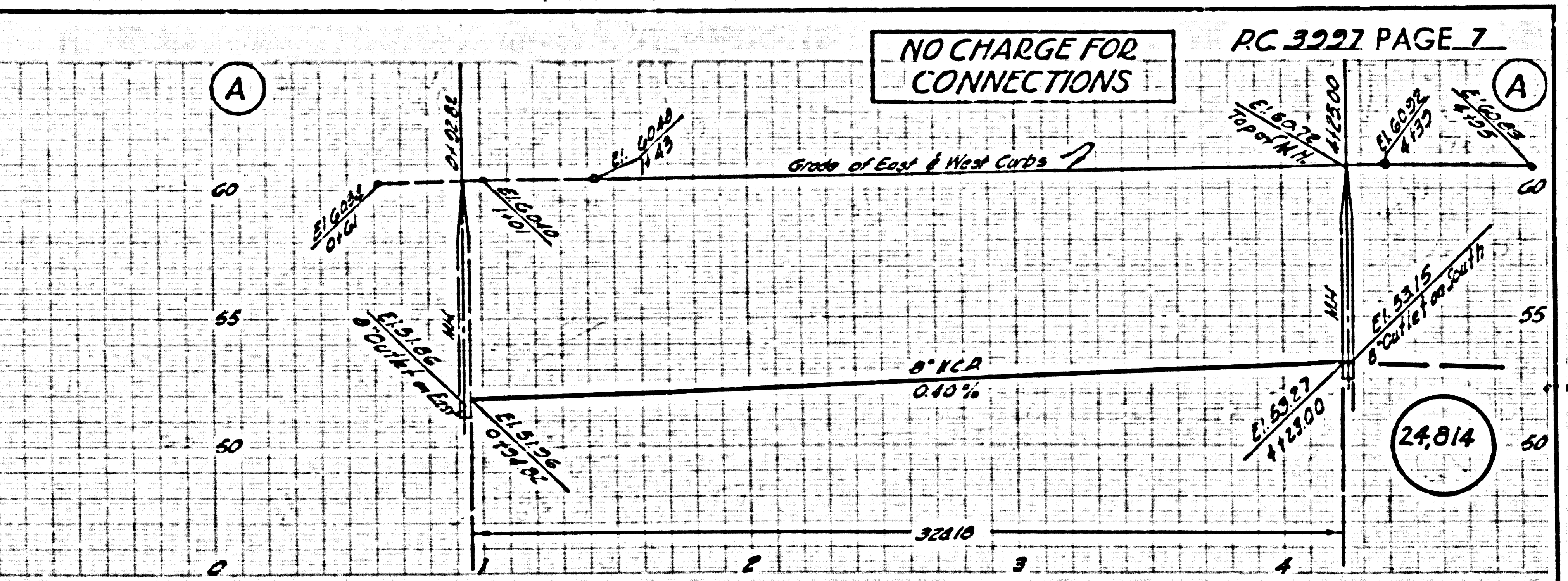
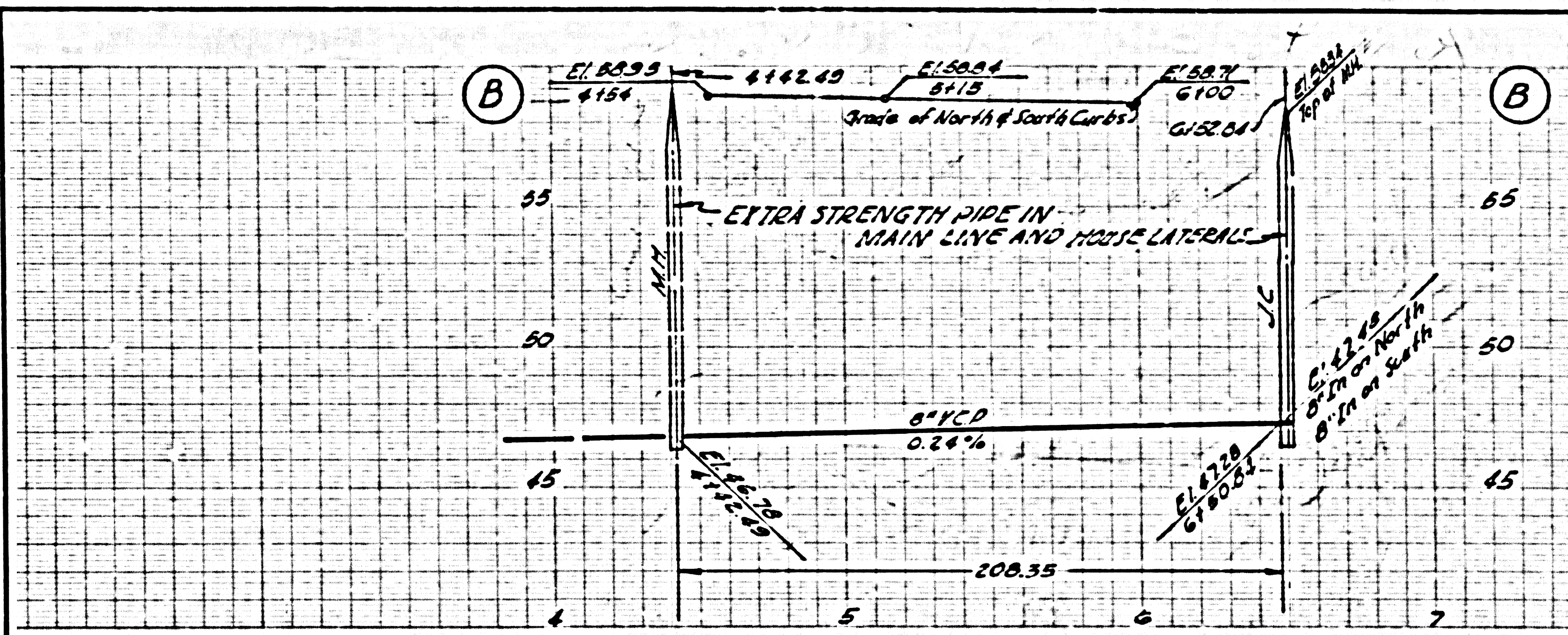
24,812



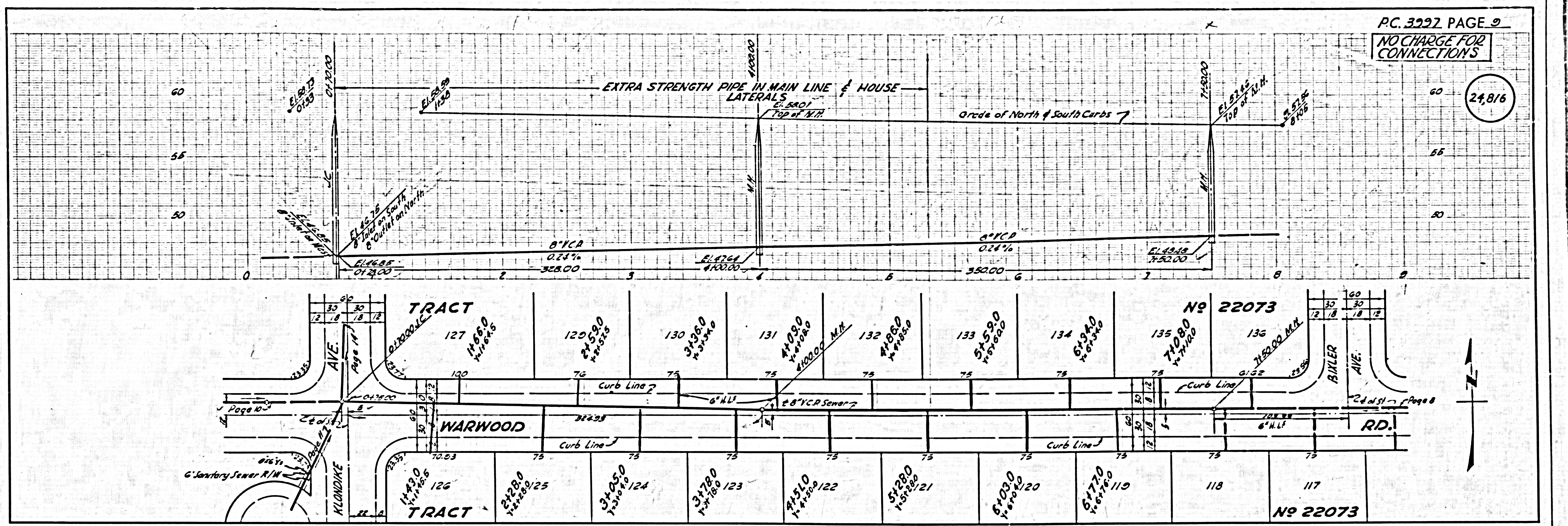
NO CHARGE FOR CONNECTIONS

24,813



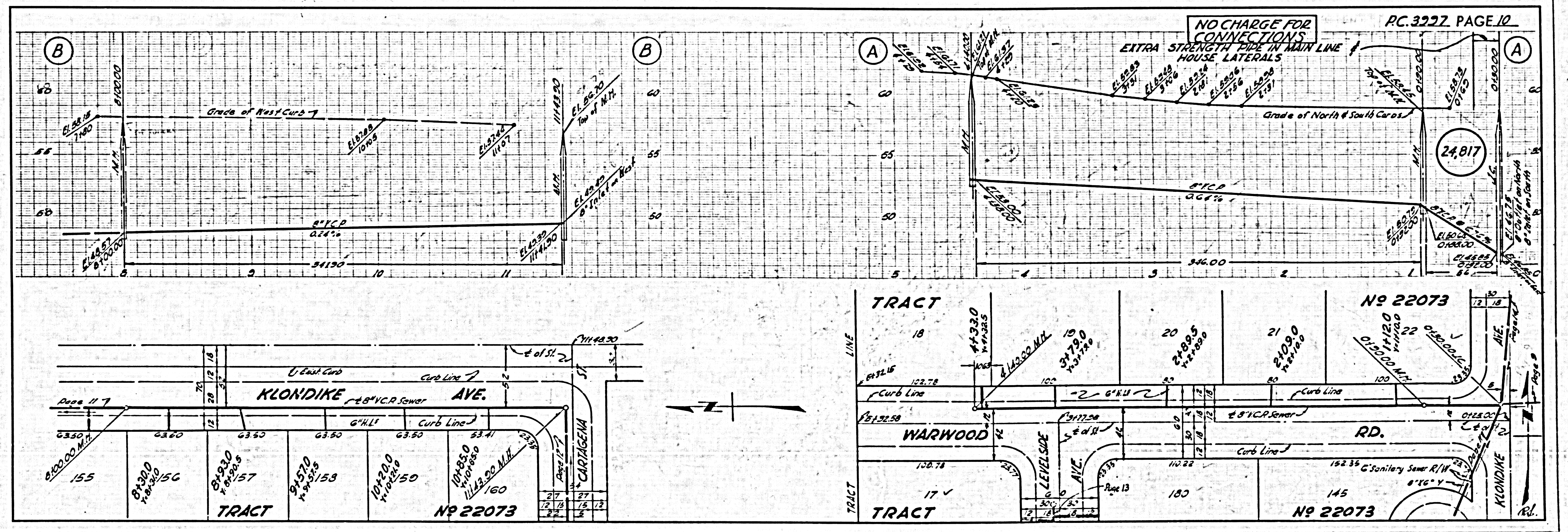


NO CHARGE FOR CONNECTIONS



24,816

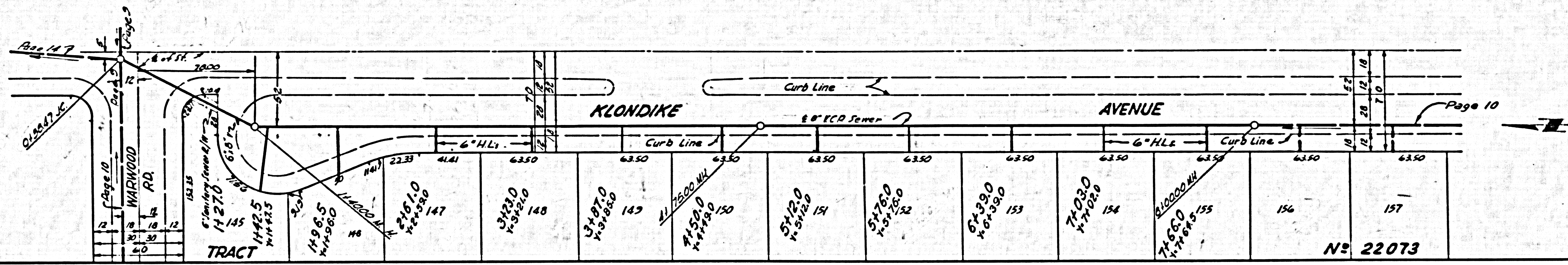
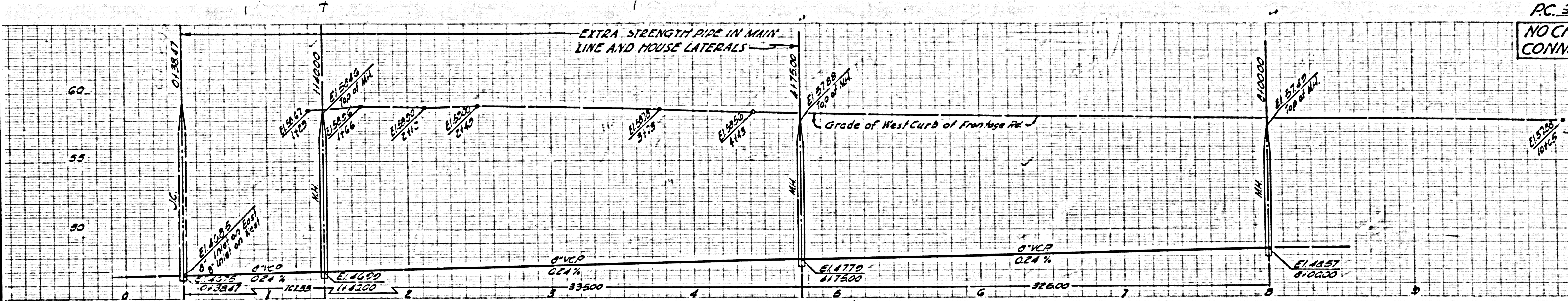
NO CHARGE FOR CONNECTIONS



24,817

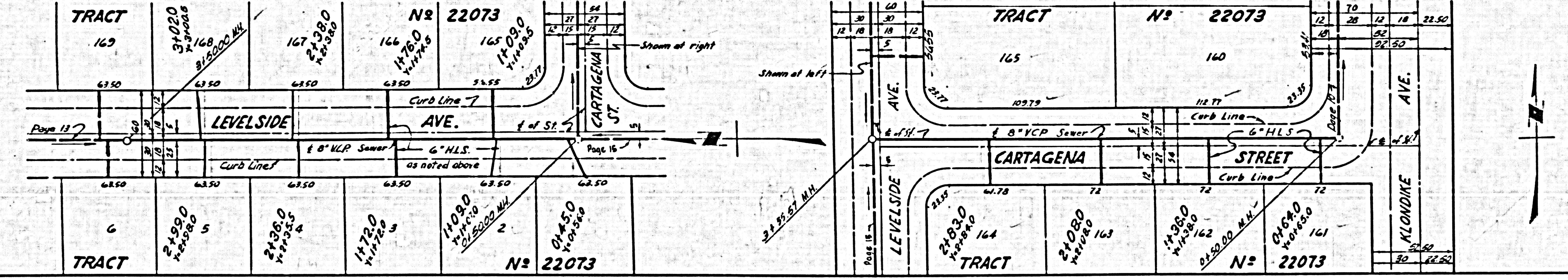
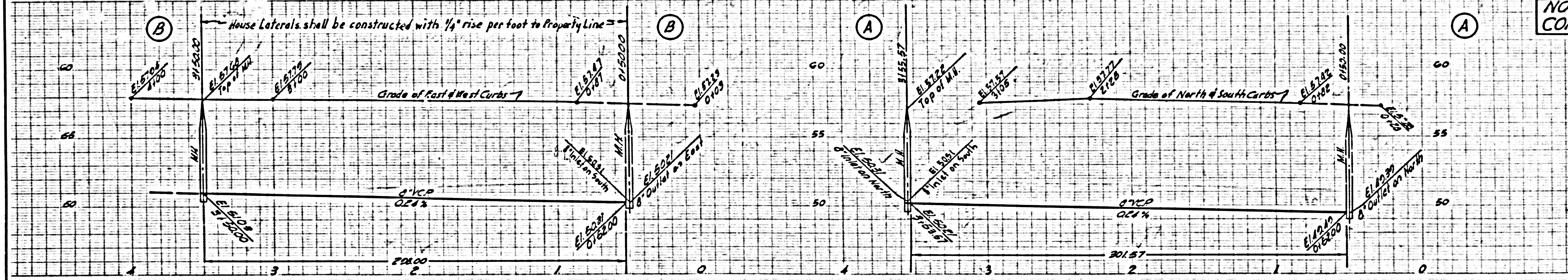
NO CHARGE FOR CONNECTIONS

24,818



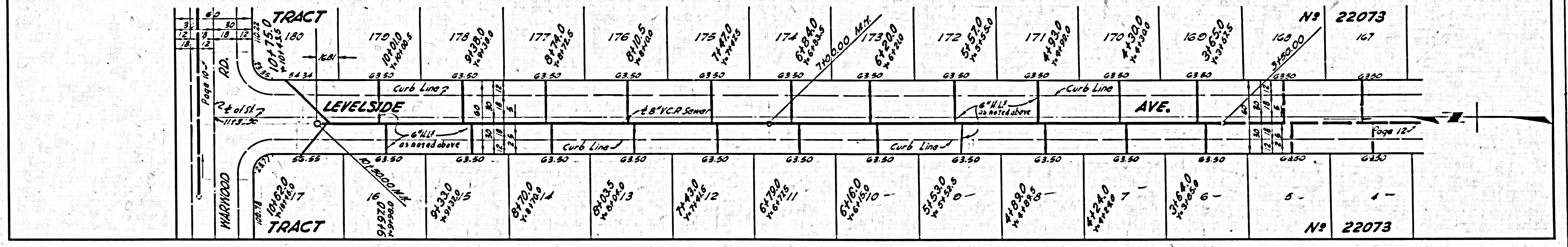
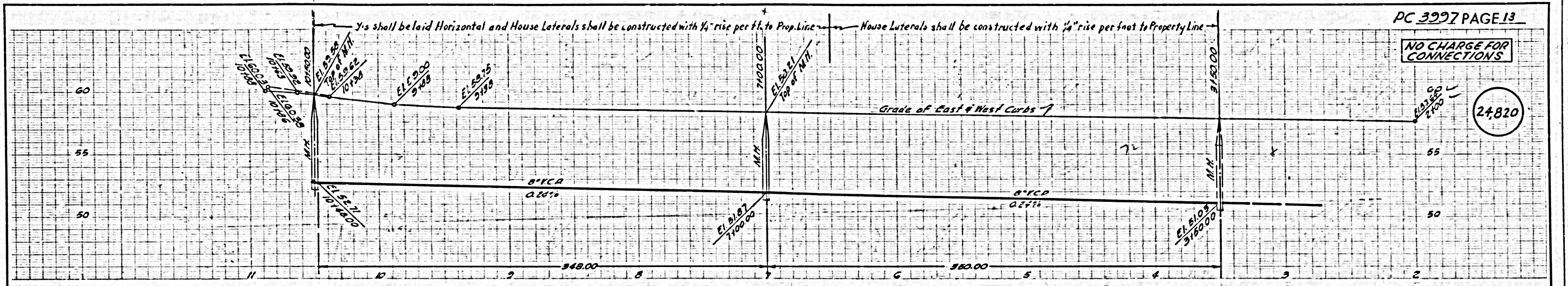
NO CHARGE FOR CONNECTIONS

24,819



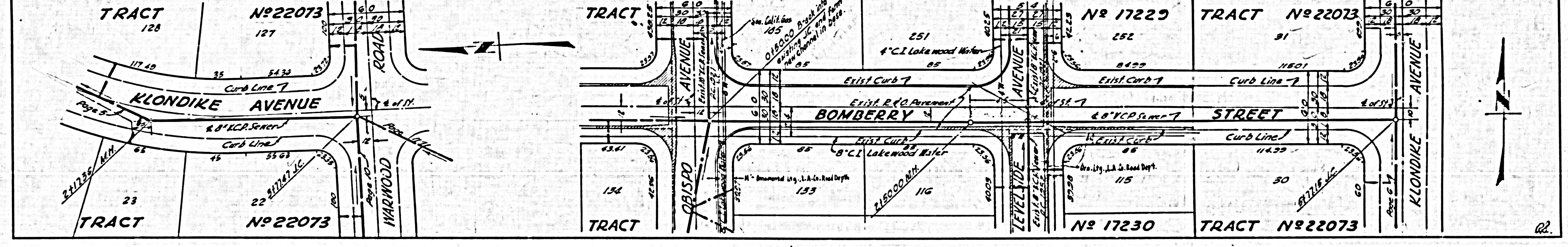
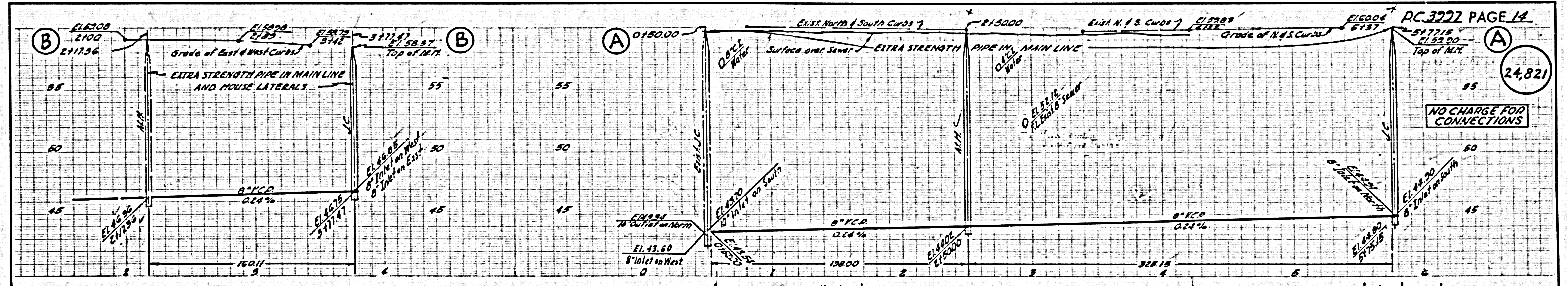
NO CHARGE FOR CONNECTIONS

24,820



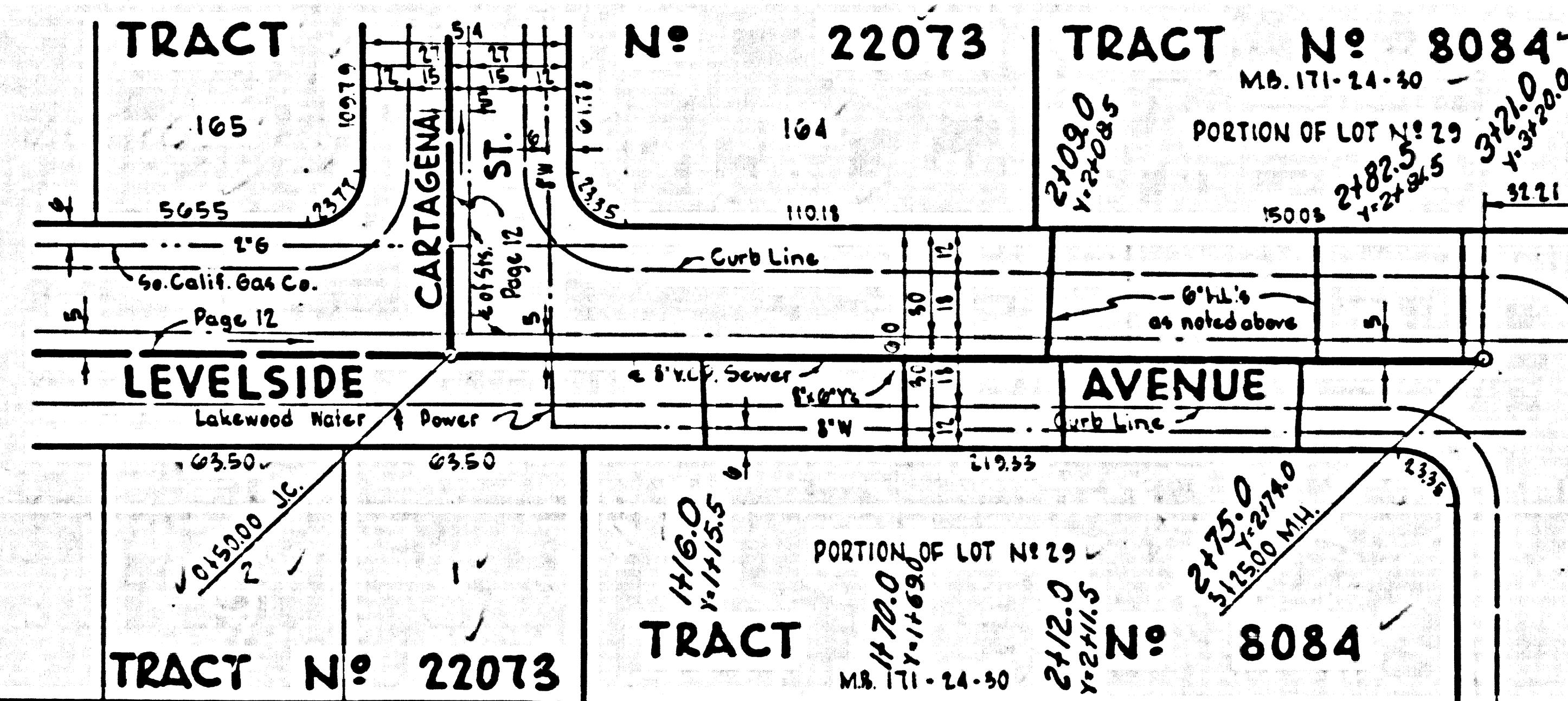
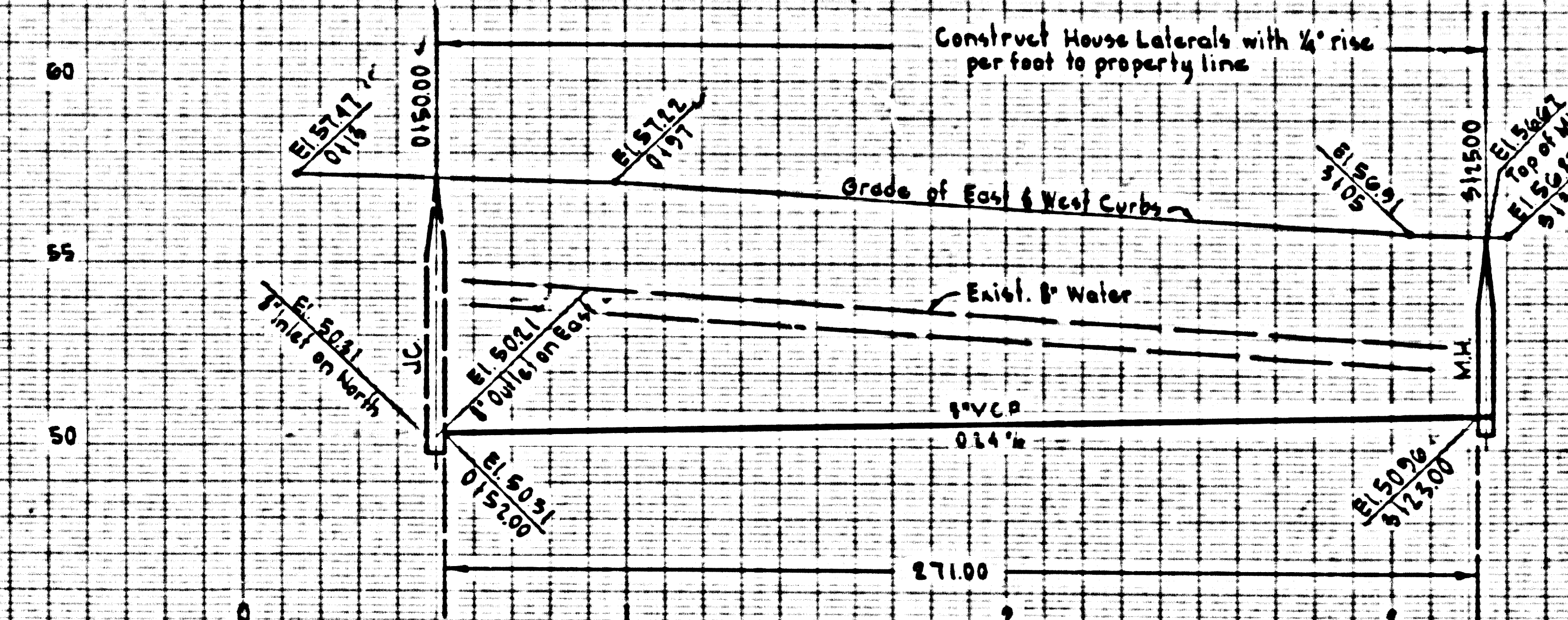
NO CHARGE FOR CONNECTIONS

24,821



NO CHARGE FOR CONNECTIONS

24,822



CHECKED BY: *J. C. Smith* 4-22-57
OFFICE OF COUNTY ENGINEER, REG. CE. NO. 2426