

SAN DIMAS BLDG. DIST. NO. 10

PROFILE ALIGNMENT AND GRADE OF **P.C.3998**  
**SANITARY SEWERS** PAGE 1  
 TO BE CONSTRUCTED IN

TRACT NO. 21954 (23,187)

PRIVATE CONTRACT NO. 3998

W.S. 47 (4)

2 SHEETS, 4 PAGES  
 SCALE: 1" = 40' APRIL, 1956

PREPARED IN THE OFFICES OF  
**TEGART ENGINEERS**

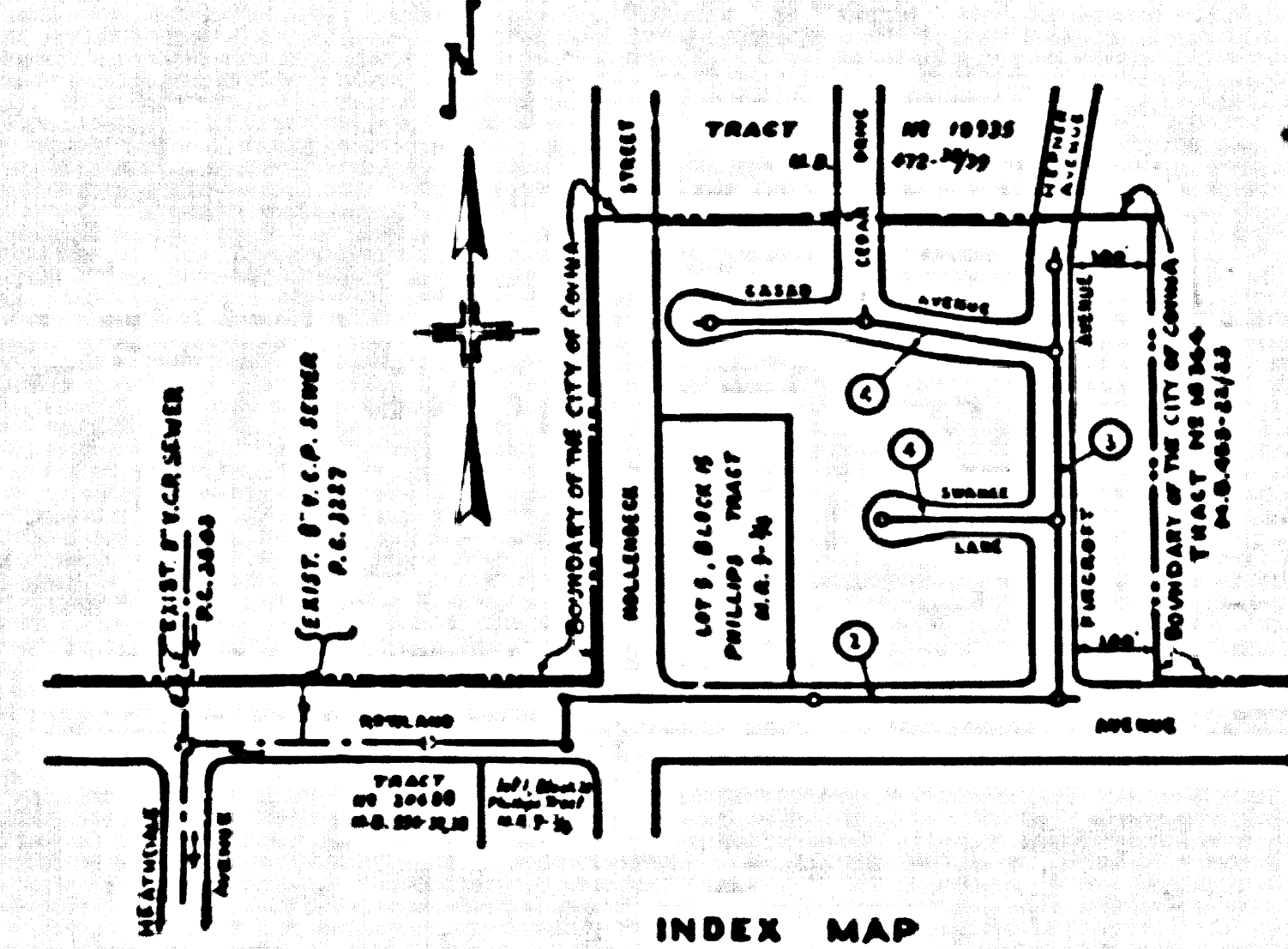
By *Harold M. Tegar*  
 REG. E. & NO. 2187

FOR LEGEND SEE PLAN NO. S-A-64

- NOTES:**
- PROVIDE STAKES ON THE PROPERTY LINE OR PROPERTY LINES PRODUCED AT RIGHT ANGLES TO THE SEWER LINES AT THE CENTER LINE OF EACH MANHOLE.
  - NO REPRESENTATIVE OF THE COUNTY ENGINEER WILL SURVEY OR LAYOUT ANY PORTION OF THE WORK.
  - THE OWNER OR HIS AUTHORIZED REPRESENTATIVE SHALL FURNISH THE COUNTY ENGINEER WITH GRADE SHEETS AND STATIONING FOR ALL HOUSE LATERALS AND BRANCHES AND SHALL PROVIDE STAKES FOR THEM AT THEIR PROPER LOCATIONS WITH STATIONING AND PLAINLY NUMBERED. ANY CHANGE IN STATIONING SHALL BE REQUESTED IN WRITING BY THE OWNER OR HIS REPRESENTATIVE.
  - NO REVISIONS SHALL BE MADE IN THESE PLANS WITHOUT THE APPROVAL OF THE COUNTY ENGINEER.
  - USE STANDARD MANHOLE FRAMES AND COVERS, S.A. 117, EXCEPT AS NOTED.
  - USE STANDARD STRENGTH PIPE EXCEPT AS NOTED.
  - USE CEMENT MORTAR FOR ALL VITRIFIED CLAY PIPE JOINTS.
  - RESURFACE ALL TRENCH WITHIN PAVED AREA TO MEET L.A. COUNTY ROAD DEPT. OR CALIF. STATE HIGHWAY DEPT. REQUIREMENTS IN ACCORDANCE WITH PERMITS.
  - INDICATE FOUR FEET OF SEWER AT POINTS OF INTERFERENCE WITH POLES, S.A. 117.
  - HOUSE LATERALS TO BE CONSTRUCTED WITH INVERTS AT 6" TO 8" BELOW CURB GRADE EXCEPT AS NOTED.
  - ALL STRUCTURES SHALL BE BUILT IN ACCORDANCE WITH S.A. 114, P. 204 AS NOTED.
  - FOR ALLOWABLE SEWAGE USE USE FORMULA NO. 1, L. COUNTY SPEC. SEC. 21.
  - MANHOLE TOPS IN UNIMPROVED RIGHTS-OF-WAY TO BE 6" ABOVE FINISHED GRADE.
  - PRIVATE ENGINEER TO FURNISH HOUSE LATERAL DEPTH AT PROPERTY LINE BELOW TOP OF CURB GRADE ELEVATION FOR EACH HOUSE LATERAL ON THE GRADE SHEET.

**BENCH MARK T-8**  
 6.47' in Curve, 1' South of  
 S.C.R. on S.W. Cor. of Hollenbeck St. and Workman Ave.  
 ELEV. 481.91.  
 L.A. County R&Dep't. L.B. 43-26.

**NO CHARGES FOR CONNECTIONS**  
*3K Onida 6-15-56*



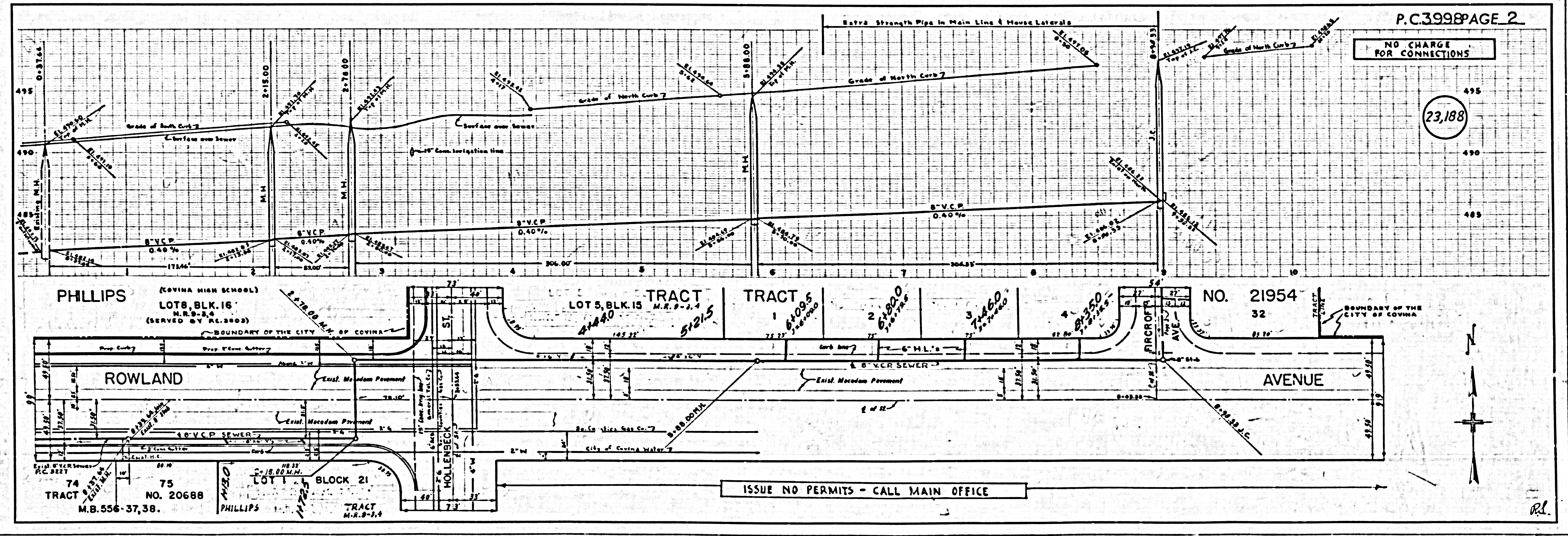
INDEX MAP  
 TRACT NO. 21954  
 P.C. 3998  
 SCALE: 1" = 300'

**NOTE:**  
 GRADES TO WHICH THE IMPROVEMENTS ARE TO BE CONSTRUCTED ARE SHOWN ON PLANS AND PROFILES. GRADE POINTS FOR TOP OF CURBS, CENTER LINE OF STREETS, OR CENTER LINE OF ALLEYS ARE SHOWN BY CIRCLES ON PROFILES AT ALL POINTS BETWEEN DESIGNATED POINTS THE GRADE SHALL BE ESTABLISHED SO AS TO CONFORM TO A STRAIGHT LINE DRAWN BETWEEN SAID DESIGNATED POINTS.  
 REVISIONS ARE IN PENCIL ABOVE U.S.C. & G.S. PER SEWER DEPARTMENT OF 1955.  
 THIS DRAWING AND THE DATA HEREON ARE HEREBY MADE A PART OF THE SPECIFICATIONS.  
 WORK SHALL BE CONSTRUCTED ACCORDING TO SPECIFICATIONS ON FILE IN THE OFFICE OF THE COUNTY ENGINEER AND SHALL BE PROSECUTED ONLY IN THE PRESENCE OF THE COUNTY ENGINEER.  
 BEFORE WORK CAN BE STARTED, THE CONTRACTOR MUST OBTAIN A PERMIT TO EXCAVATE IN COUNTY STREETS FROM THE L.A. COUNTY ROAD DEPT. THE 25' TOP OF LINE SHALL BE SHOWN WITH THE COUNTY ENGINEER FROM 224 PAV. AMERICAN BLDG. APPROVAL OF THIS PLAN BY THE COUNTY OF LOS ANGELES DOES NOT CONSTITUTE A REPRESENTATION AS TO THE ACCURACY OF THE LOCATION OF THE EXISTENCE OR NON-EXISTENCE OF ANY UNDERGROUND UTILITY PIPE, OR STRUCTURE WITHIN THE LIMITS OF THE PROJECT THIS NOTE APPLIES TO ALL PAGES.  
 IF WORK IS TO BE DONE IN A STATE HIGHWAY, A PERMIT MUST BE OBTAINED FROM THE STATE OF CALIFORNIA, DIVISION OF HIGHWAYS, 128 SOUTH SPRING STREET.

COUNTY OF LOS ANGELES, CALIFORNIA

APPROVED, JOHN A. LAMBIE, COUNTY ENGINEER  
 APPROVED, A. M. RAWN, CHIEF ENGINEER  
 CO. SAN. DIST. NO. 22  
 BY *A.P. Collins* SANITATION ENGINEER BY *G. Constantine* OFFICE ENGINEER  
 CHECKED BY *3K Onida 6-15-56*  
 OFFICE OF COUNTY ENGINEER, 805 C. E. NO. 3406

*checked 8-3-56 M. Loren*



P.C.3998 PAGE 2

**NO CHARGE FOR CONNECTIONS**

(23,188)

ISSUE NO PERMITS - CALL MAIN OFFICE

*RL*

