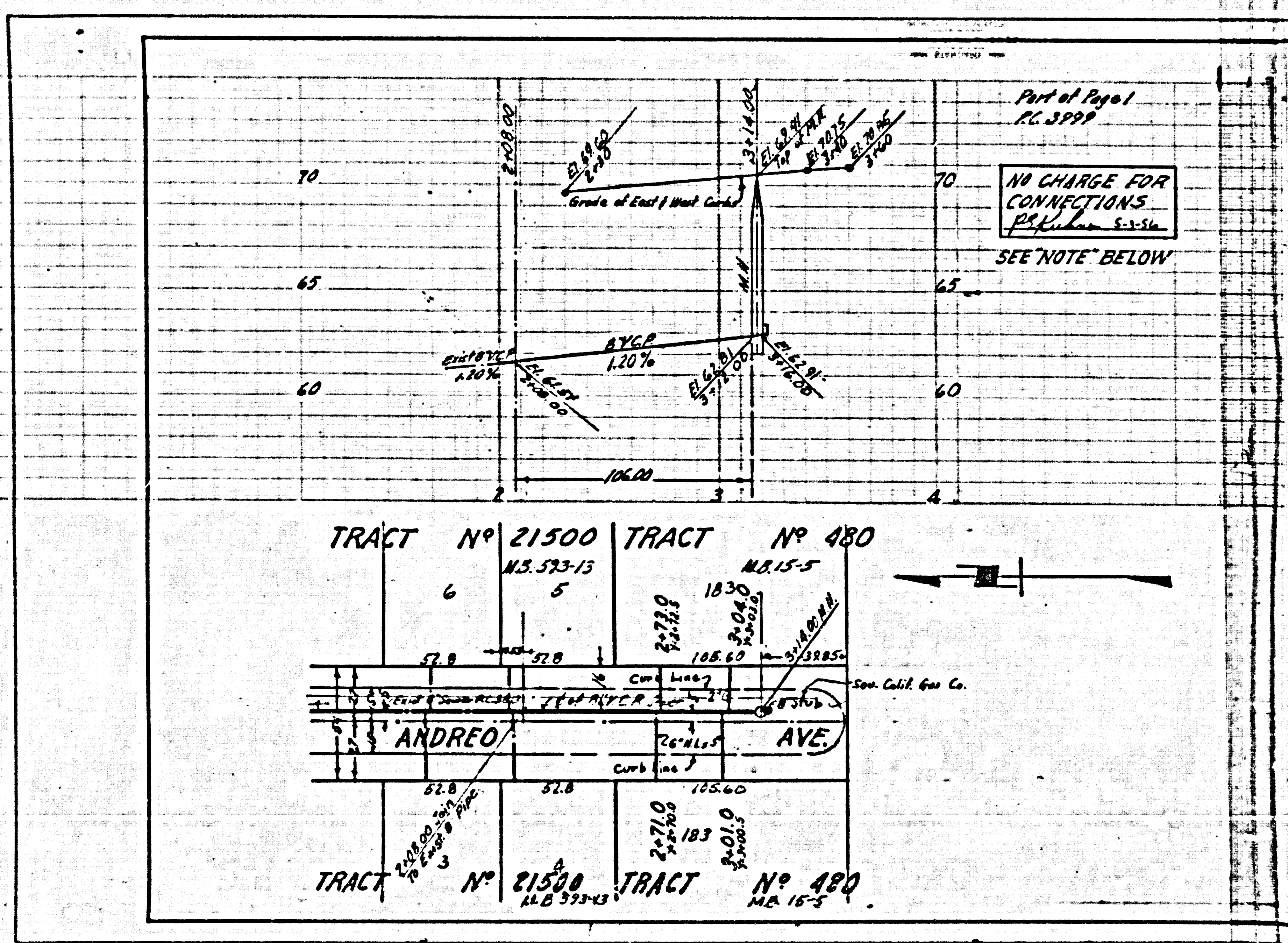


DC 3999



LOMITA BLDG. DIST. NO. 71

PROFILE ALIGNMENT AND GRADE OF SANITARY SEWERS TO BE CONSTRUCTED IN ANDREO AVENUE

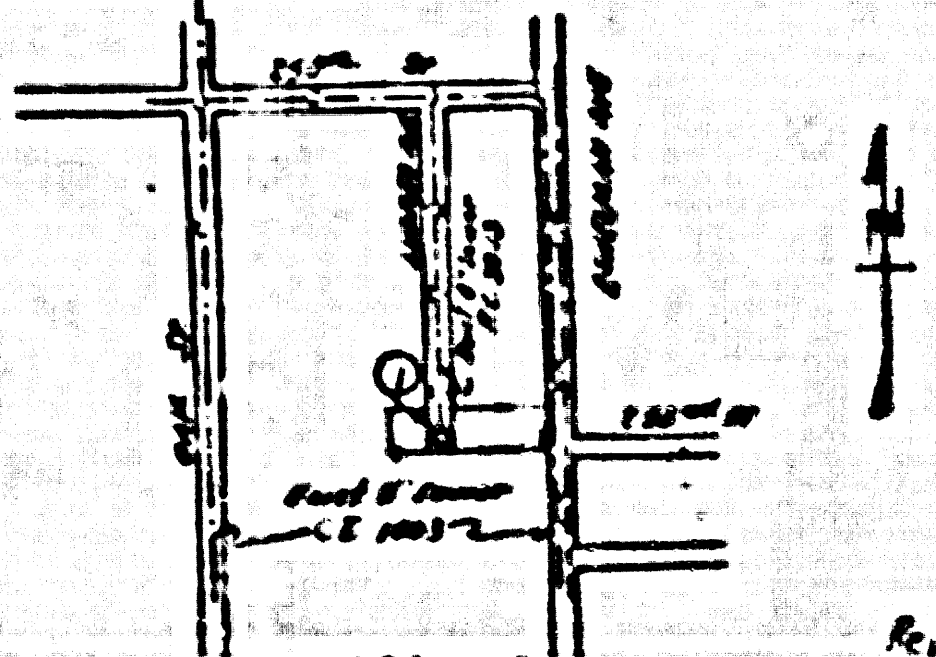
W.S. 28
- 1 SHEET - 1 PAGE
SCALE: 1" = 5' HORIZ. 1" = 4' VERT. MAY, 1956

PREPARED BY THE OFFICES OF ANCHORAGE ENGINEERING CO.
Signature Louis Lewis
REG. C. E. NO. 7762

FOR LEGEND SEE PLAN NO. S-A-64

1. THE SEWER SHALL BE CONSTRUCTED IN ACCORDANCE WITH THE SPECIFICATIONS AND STANDARDS OF THE COUNTY ENGINEER.
2. THE SEWER SHALL BE CONSTRUCTED IN ACCORDANCE WITH THE SPECIFICATIONS AND STANDARDS OF THE COUNTY ENGINEER.
3. THE SEWER SHALL BE CONSTRUCTED IN ACCORDANCE WITH THE SPECIFICATIONS AND STANDARDS OF THE COUNTY ENGINEER.
4. THE SEWER SHALL BE CONSTRUCTED IN ACCORDANCE WITH THE SPECIFICATIONS AND STANDARDS OF THE COUNTY ENGINEER.
5. THE SEWER SHALL BE CONSTRUCTED IN ACCORDANCE WITH THE SPECIFICATIONS AND STANDARDS OF THE COUNTY ENGINEER.
6. THE SEWER SHALL BE CONSTRUCTED IN ACCORDANCE WITH THE SPECIFICATIONS AND STANDARDS OF THE COUNTY ENGINEER.
7. THE SEWER SHALL BE CONSTRUCTED IN ACCORDANCE WITH THE SPECIFICATIONS AND STANDARDS OF THE COUNTY ENGINEER.
8. THE SEWER SHALL BE CONSTRUCTED IN ACCORDANCE WITH THE SPECIFICATIONS AND STANDARDS OF THE COUNTY ENGINEER.
9. THE SEWER SHALL BE CONSTRUCTED IN ACCORDANCE WITH THE SPECIFICATIONS AND STANDARDS OF THE COUNTY ENGINEER.
10. THE SEWER SHALL BE CONSTRUCTED IN ACCORDANCE WITH THE SPECIFICATIONS AND STANDARDS OF THE COUNTY ENGINEER.

NOTE:
NO PERMITS TO BE ISSUED UNTIL STREET IS DEDICATED. CALL MAIN OFFICE



Checked 5-21-56 McLaren

PROFILE ALIGNMENT AND GRADE OF SANITARY SEWERS TO BE CONSTRUCTED IN ANDREO AVENUE

P.C. 3999 PAGE 1

(22677)

PRIVATE CONTRACT NO. 3999

W.S. 28

- 1 SHEET - 1 PAGE

SCALE: 1" = 5' HORIZ. 1" = 4' VERT. MAY, 1956

PREPARED BY THE OFFICES OF ANCHORAGE ENGINEERING CO.
Signature Louis Lewis
REG. C. E. NO. 7762

FOR LEGEND SEE PLAN NO. S-A-64

1. THE SEWER SHALL BE CONSTRUCTED IN ACCORDANCE WITH THE SPECIFICATIONS AND STANDARDS OF THE COUNTY ENGINEER.
2. THE SEWER SHALL BE CONSTRUCTED IN ACCORDANCE WITH THE SPECIFICATIONS AND STANDARDS OF THE COUNTY ENGINEER.
3. THE SEWER SHALL BE CONSTRUCTED IN ACCORDANCE WITH THE SPECIFICATIONS AND STANDARDS OF THE COUNTY ENGINEER.
4. THE SEWER SHALL BE CONSTRUCTED IN ACCORDANCE WITH THE SPECIFICATIONS AND STANDARDS OF THE COUNTY ENGINEER.
5. THE SEWER SHALL BE CONSTRUCTED IN ACCORDANCE WITH THE SPECIFICATIONS AND STANDARDS OF THE COUNTY ENGINEER.
6. THE SEWER SHALL BE CONSTRUCTED IN ACCORDANCE WITH THE SPECIFICATIONS AND STANDARDS OF THE COUNTY ENGINEER.
7. THE SEWER SHALL BE CONSTRUCTED IN ACCORDANCE WITH THE SPECIFICATIONS AND STANDARDS OF THE COUNTY ENGINEER.
8. THE SEWER SHALL BE CONSTRUCTED IN ACCORDANCE WITH THE SPECIFICATIONS AND STANDARDS OF THE COUNTY ENGINEER.
9. THE SEWER SHALL BE CONSTRUCTED IN ACCORDANCE WITH THE SPECIFICATIONS AND STANDARDS OF THE COUNTY ENGINEER.
10. THE SEWER SHALL BE CONSTRUCTED IN ACCORDANCE WITH THE SPECIFICATIONS AND STANDARDS OF THE COUNTY ENGINEER.

APPROVED, JOHN A. LAMBE, COUNTY ENGINEER

APPROVED, A. M. RAWL, CHIEF ENGINEER

BY *Signature* BY *Signature*

CHECKED BY *Signature* 5-23-56

OFFICE OF COUNTY ENGINEER, REG. C. E. NO. 7860

Revision: Grade Changed
M.H. Omitting of 24' 0" 0.00
Approved: *Signature* 5-23-56
Office of County Engineer

ANDREO AVE.

PC 3999

