

LENNOX BLDG. DIST. NO. 7

PROFILE ALIGNMENT AND GRADE OF P.C. 4005
 SANITARY SEWERS PAGE 1
 TO BE CONSTRUCTED IN

ALLEY EAST OF AVALON BLVD. (23,435)
 (2)
 PRIVATE CONTRACT NO. 4005

W.S. 26
 - 1 SHEET, - 2 PAGES

SCALE: 1" = 10' - 0" MAY, 1956

PREPARED IN THE OFFICES OF
 ROBIN A. GRAVES CO.

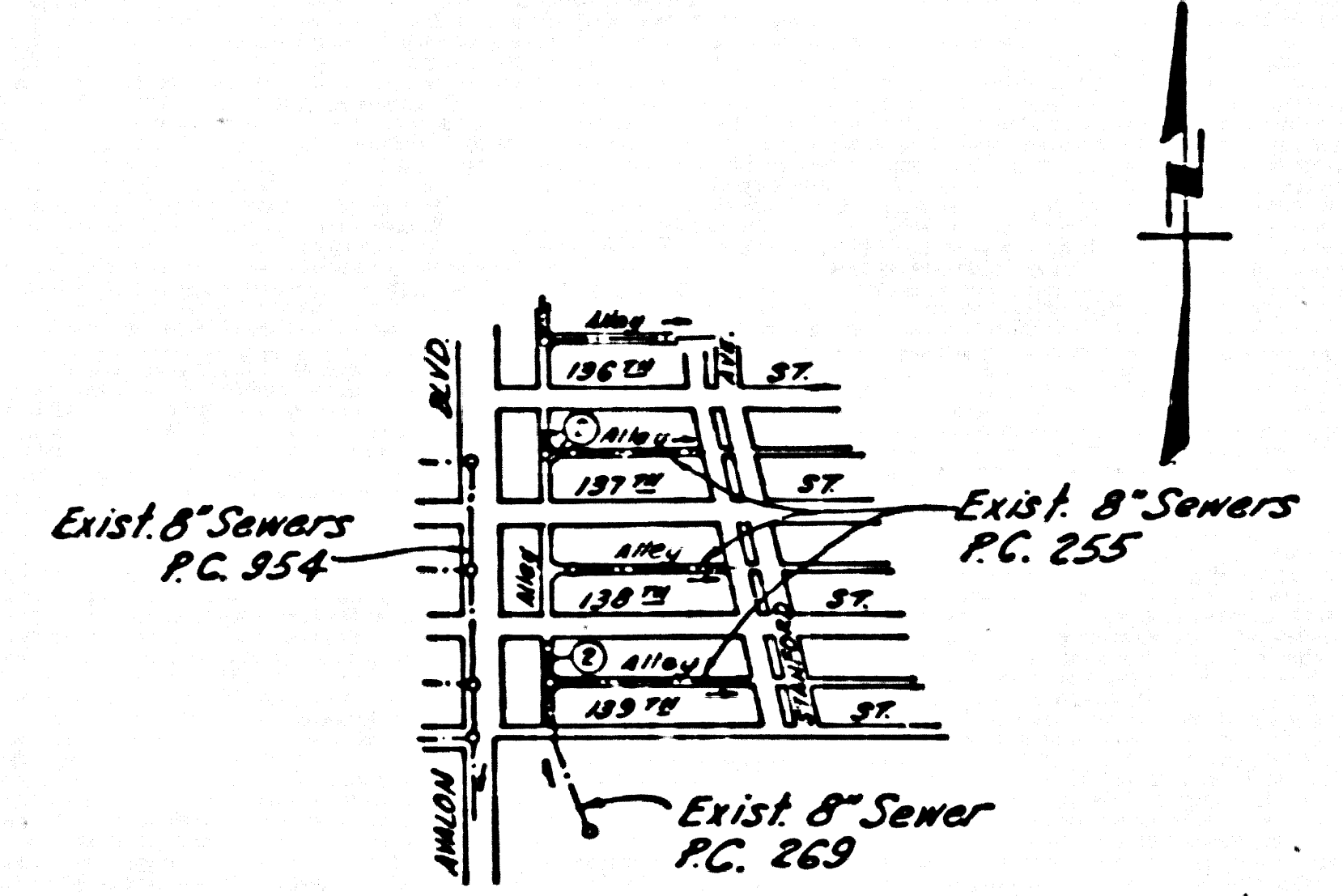
By *Robin A. Graves* REG. C. E. NO. 2107

FOR LEGEND SEE PLAN NO. S-A-64

- NOTES:
- PROVIDE STAKES ON THE PROPERTY LINE OR PROPERTY LINES PRODUCED, AT RIGHT ANGLES TO THE SEWER LINE AT THE CENTER LINE OF EACH MANHOLE.
 - NO REPRESENTATIVE OF THE COUNTY ENGINEER WILL SURVEY OR LAYOUT ANY PORTION OF THE WORK.
 - THE OWNER OR HIS AUTHORIZED REPRESENTATIVE SHALL FURNISH THE COUNTY ENGINEER WITH GRADE SHEETS AND STATION FOR ALL HOUSE LATERALS AND BRANCHES AND SHALL PROVIDE STAKES FOR THEM AT THEIR PROPER LOCATIONS WITH STATIONING FAIRLY MARKED. ANY CHANGE IN LOCATION SHALL BE REQUESTED IN WRITING BY THE OWNER OR HIS REPRESENTATIVE.
 - NO REVISIONS SHALL BE MADE IN THESE PLANS WITHOUT THE APPROVAL OF THE COUNTY ENGINEER.
 - USE STANDARD MANHOLE FRAMES AND COVERS, S.A. 117, EXCEPT AS NOTED.
 - USE STANDARD STRENGTH PIPE EXCEPT AS NOTED.
 - USE CEMENT MORTAR FITS ALL VITRIFIED CLAY PIPE JOINTS.
 - RESURFACE ALL TRENCH WITHIN PAVED AREA TO MEET L. A. COUNTY ROAD DEPT. OR CALIF. STATE HIGHWAY DEPT. REQUIREMENTS IN ACCORDANCE WITH PERMITS.
 - INCREASE FOUR FEET OF SEWER AT POINTS OF INTERFERENCE WITH POLES, S.A. 119.
 - HOUSE LATERALS TO BE CONSTRUCTED WITH INVERTS AT PROPERTY LINE - 6" - FEET BELOW GRADE OF CENTERLINE OF ALLEY EXCEPT AS NOTED.
 - ALL STRUCTURES SHALL BE BUILT IN ACCORDANCE WITH S.A. 104, EXCEPT AS NOTED.
 - FOR ALLOWABLE LEAKAGE TEST USE FORMULA NO. 1 - S.W.C. 2, SEC. 2.
 - THE PRIVATE ENGINEER IS TO FURNISH THE HOUSE LATERAL DEPTH AT THE PROPERTY LINE BELOW THE ELEVATION OF CENTERLINE OF ALLEY FOR EACH HOUSE LATERAL, ON THE GRADE SHEET.
 - THE CONTRACTOR SHALL SATISFY HIMSELF OF ALL SUBSTRUCTURES AND SHALL BE RESPONSIBLE FOR THEIR LOCATION.

B.M. SY 2975 El. 122.076
 L & B. N. of E. Curb Avalon Blvd
 34' N. of Curb & 10' N.E. Cor
 139' St. & Avalon Blvd.

NO CHARGE FOR CONNECTIONS
 & Cost 7-5-56



INDEX MAP
 Scale: 1"=600'
 P.C. 4005

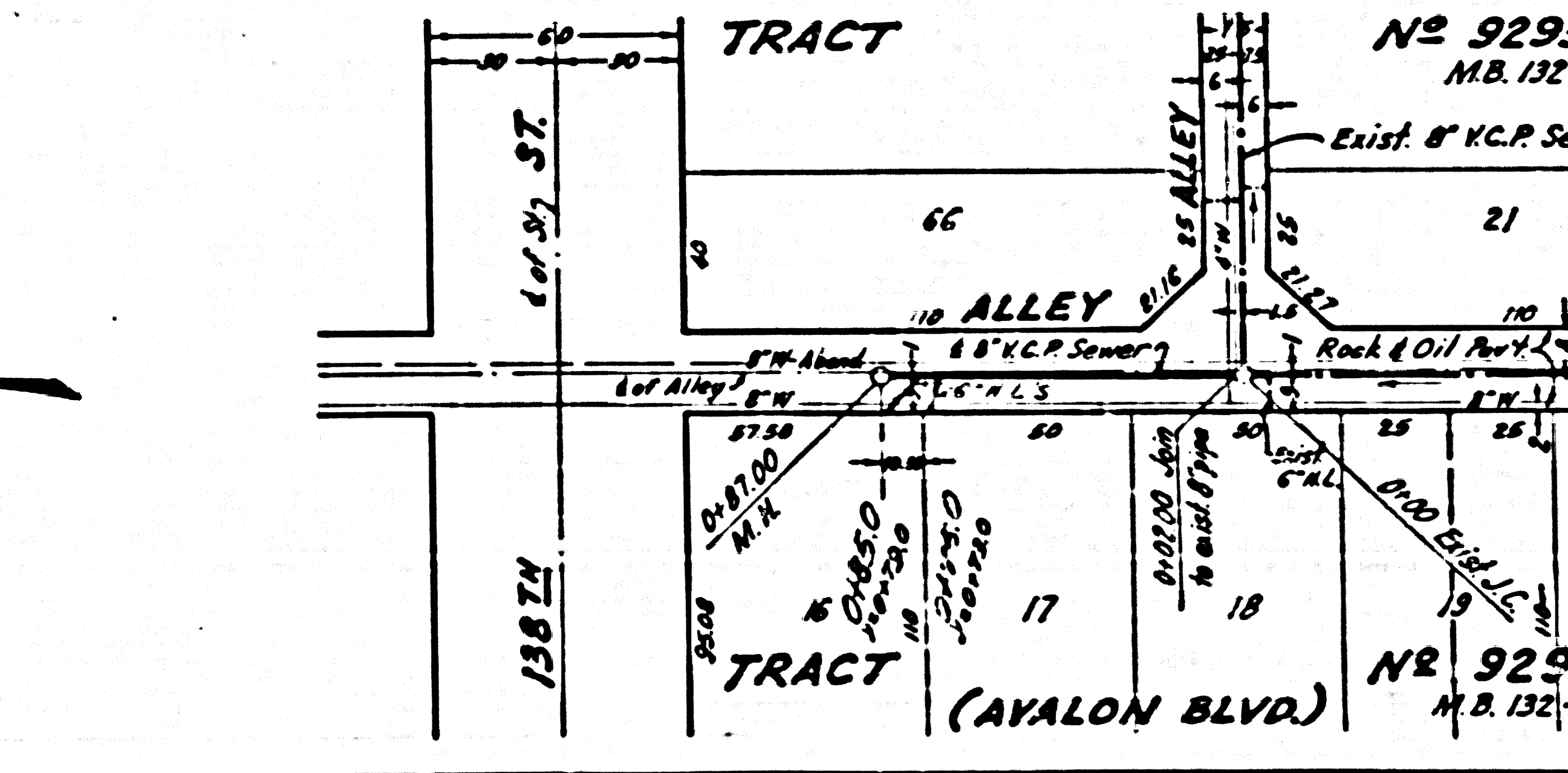
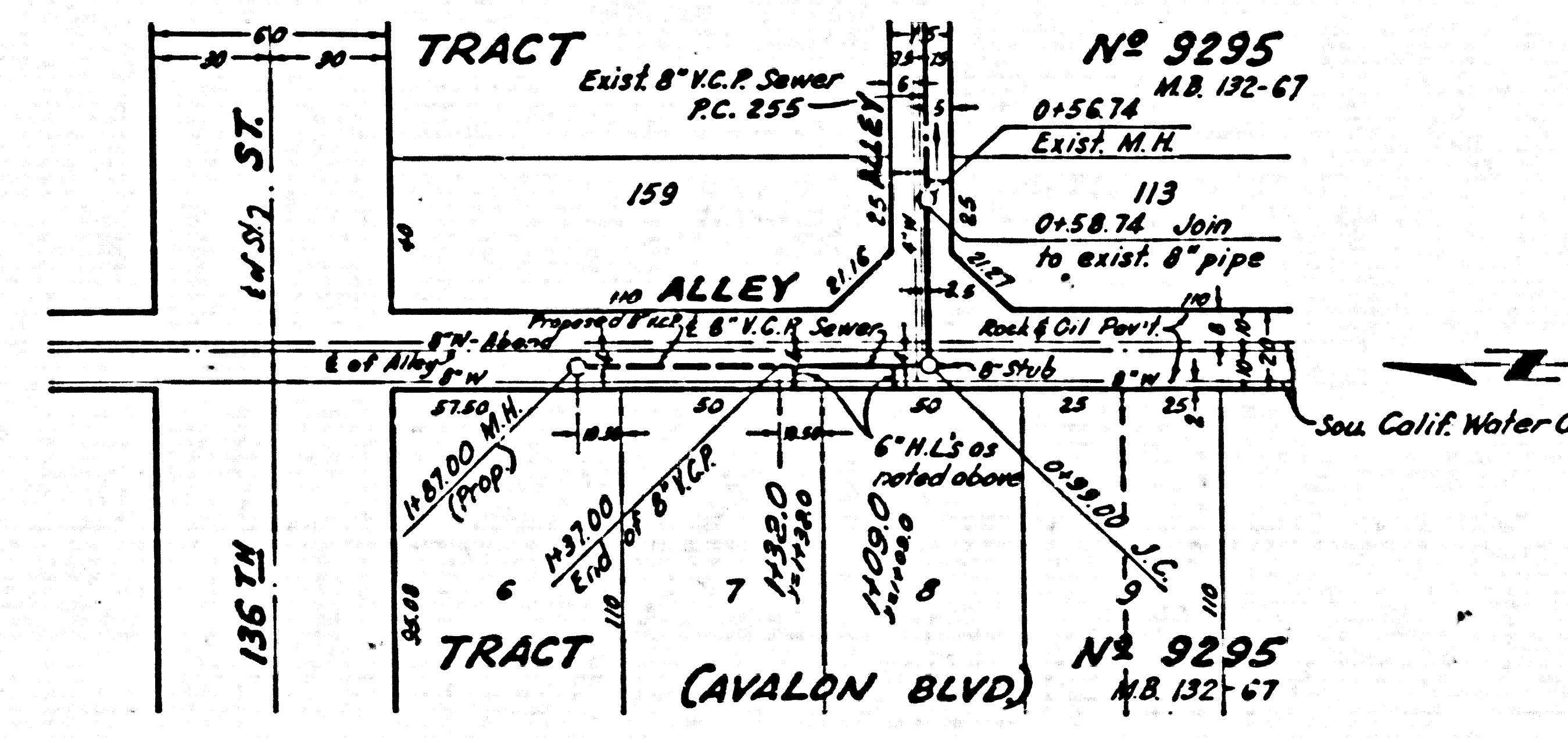
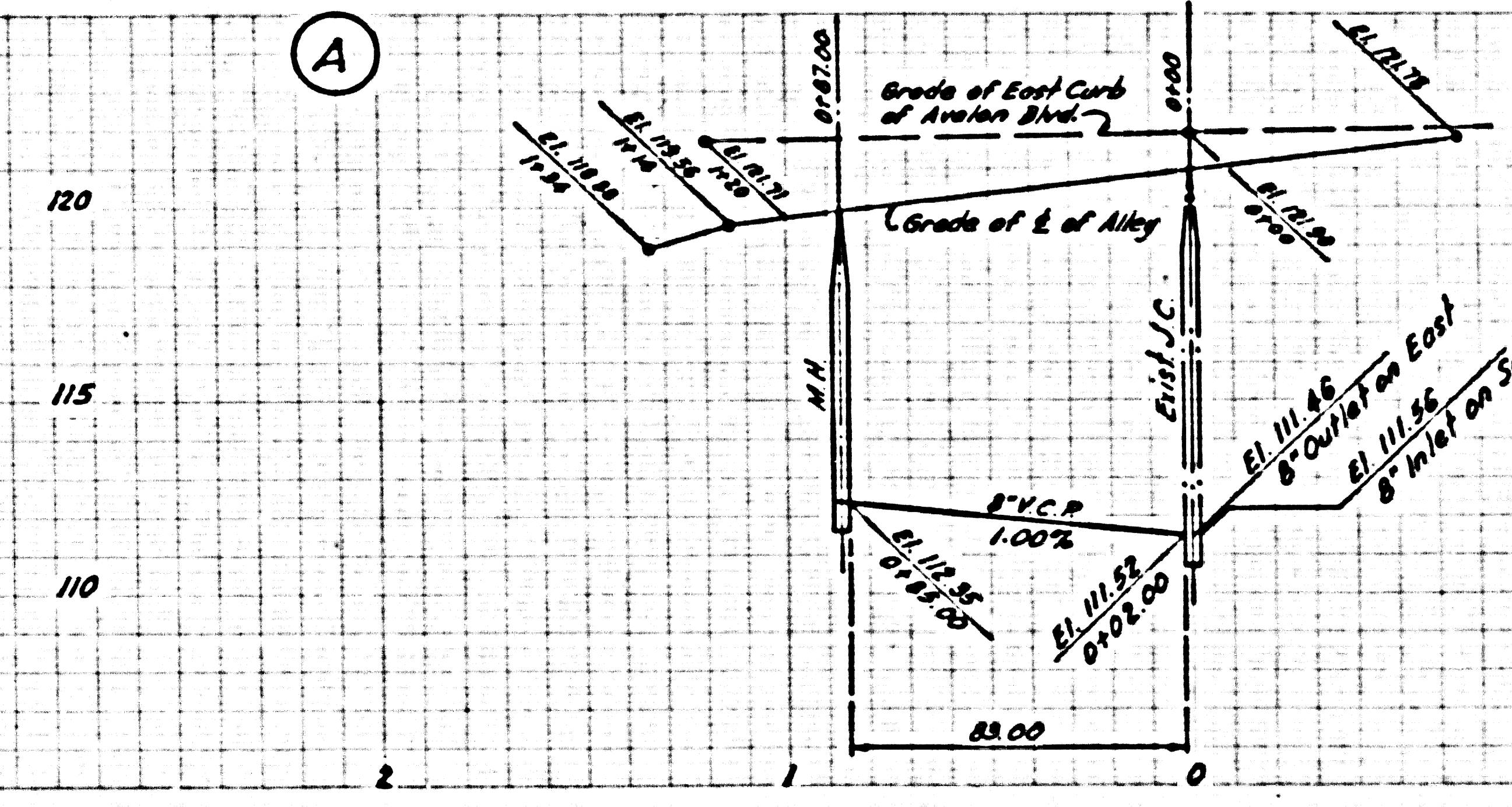
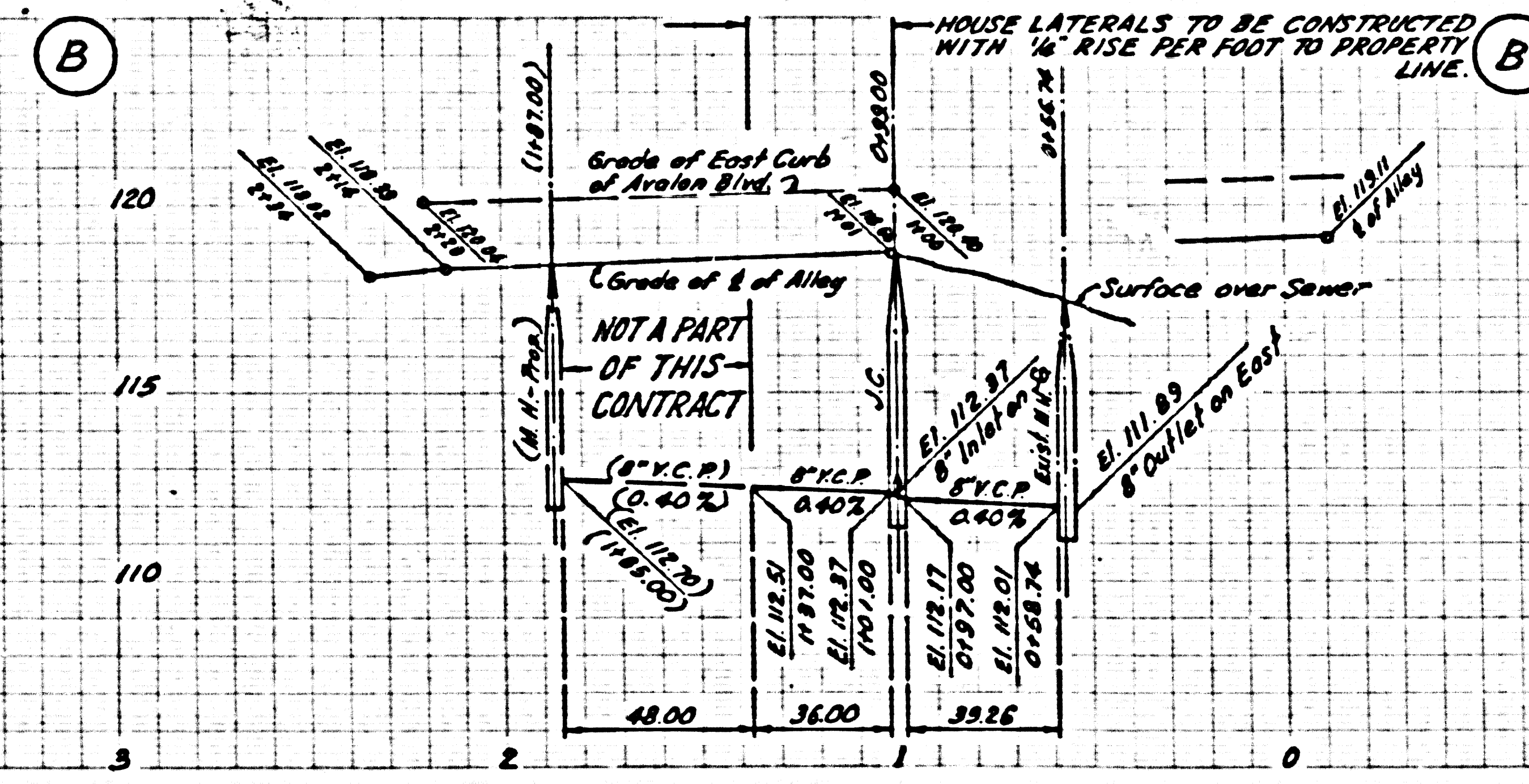
NOTE:
 GRADES TO WHICH THIS IMPROVEMENT IS TO BE CONSTRUCTED AND SHOWN ON PLANS AND PROFILE GRADE POINTS FOR TOP OF CURB, CENTER LINE OF STREETS, OR CENTER LINE OF ALLEYS ARE SHOWN BY CIRCLES ON PROFILES AT ALL POINTS BETWEEN DESIGNATED POINTS THE GRADE SHALL BE ESTABLISHED SO AS TO CONFORM TO A STRAIGHT LINE DRAWN BETWEEN SAID DESIGNATED POINTS.
 ELEVATIONS ARE IN FEET ABOVE U.S.C. & G.S. SEA LEVEL, DATUM OF 1929.
 THIS DRAWING AND THE DATA HEREON ARE HEREBY MADE A PART OF THE SPECIFICATIONS.
 WORK SHALL BE CONSTRUCTED ACCORDING TO SPECIFICATIONS ON FILE IN THE OFFICE OF THE COUNTY ENGINEER AND SHALL BE PROSECUTED ONLY IN THE PRESENCE OF THE COUNTY ENGINEER.
 BEFORE WORK CAN BE STARTED, THE CONTRACTOR MUST OBTAIN A PERMIT TO EXCAVATE IN COUNTY STREETS FROM THE L. A. COUNTY ROAD DEPT., 100 S. SPRING ST. AND MAKE A DEPOSIT WITH THE COUNTY ENGINEER, ROOM 124 FARM ANGELES BUILDING, 230 S. BROADWAY SUFFICIENT TO COVER THE COST OF CONSTRUCTION INSPECTION AND RECORD PLANS.
 APPROVAL OF THIS PLAN BY THE COUNTY OF LOS ANGELES DOES NOT CONSTITUTE A REPRESENTATION AS TO THE ACCURACY OF THE LOCATION OF OR THE EXISTENCE OR NON-EXISTENCE OF ANY UNDERGROUND UTILITY PIPE, OR STRUCTURE WITHIN THE LIMITS OF THIS PROJECT THIS NOTE APPLIES TO ALL PAGES.
 IF WORK IS TO BE DONE ON A STATE HIGHWAY, A PERMIT MUST BE OBTAINED FROM THE STATE OF CALIFORNIA, DIVISION OF HIGHWAYS, 120 SOUTH SPRING STREET.

COUNTY OF LOS ANGELES, CALIFORNIA

APPROVED, JOHN A. LAMBE, COUNTY ENGINEER
 APPROVED, A. M. RAWN, CHIEF ENGINEER
 TO SAM DEPT. NO. 1

By *A. P. Collins* SANITATION ENGINEER By *A. M. Rawn* CHIEF ENGINEER
 CHECKED BY *R. K. ...* 6-29-56
 OFFICE OF COUNTY ENGINEER, REG. C. E. NO. 7860

dated 9-13-56 W. L. ...



P.C. 4005 PAGE 2

NO CHARGE FOR CONNECTIONS

(23,436)