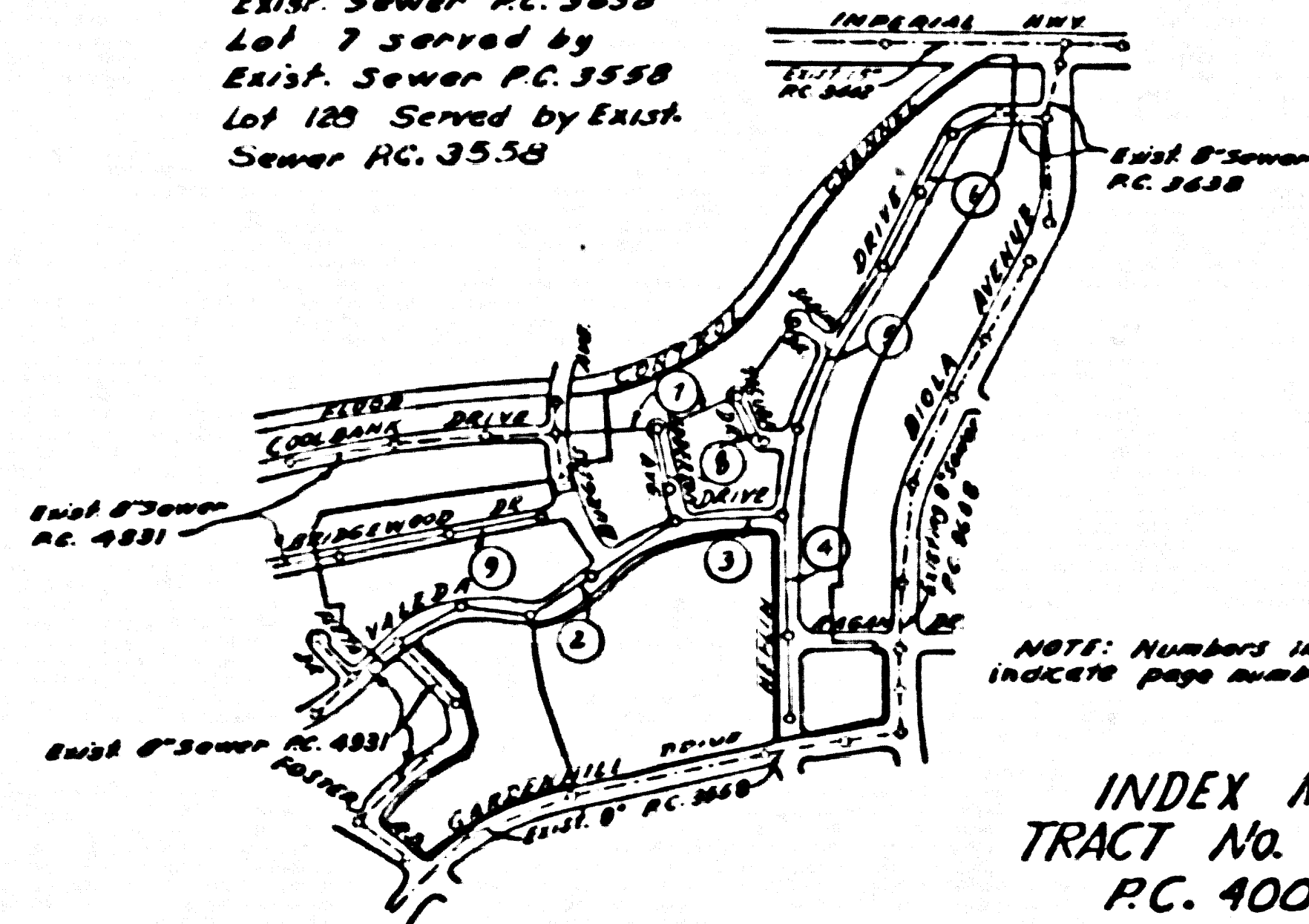


BENCH MARK: Valley View Ave. and Resolutions Ave. 100.5 of the E of Resolutions Ave. and W. of the E of Valley View Ave. set in concrete 15" below the finished surface in a man cut through the pavement and protected by a cast iron cover marked "County Surveyor Monument" in the County Surveyor's Monument marked "S.M. 1-54" R.S. 39. " 18. 1907-8 1932 AD. 21. 199.36
 NOTE: This bench mark is shown on 157 5779 "Title Map by L.A. Co. Rec. Dept. vol. 663 to all elevations to L.A. Co. Rec. Dept. Datum.

Note: Lots 1 to 6 served by Exist. Sewer P.C. 3638
 Lot 7 served by Exist. Sewer P.C. 3558
 Lot 125 Served by Exist. Sewer P.C. 3558



NOTE: Numbers in circles indicate page numbers.

**DOUBLE SCALE
 NORWALK BLDG. DIST. NO. 4.2**

PROFILE ALIGNMENT AND GRADE OF **P.C. 4007**
SANITARY SEWERS PAGE 1
 TO BE CONSTRUCTED IN
TRACT No. 19098

PRIVATE CONTRACT NO. 4007

W.S. 34
 5 SHEETS, 2 PAGES
 SCALE: VERT. 1"=8'
 HORIZ. 1"=40'
 JUNE, 1958
 PREPARED IN THE OFFICES OF
MCINTIRE & QUIROS INC.
 619/58
 REC. C. E. NO. 2541A
 FOR LEGEND SEE PLAN NO. S-A-64

28,392

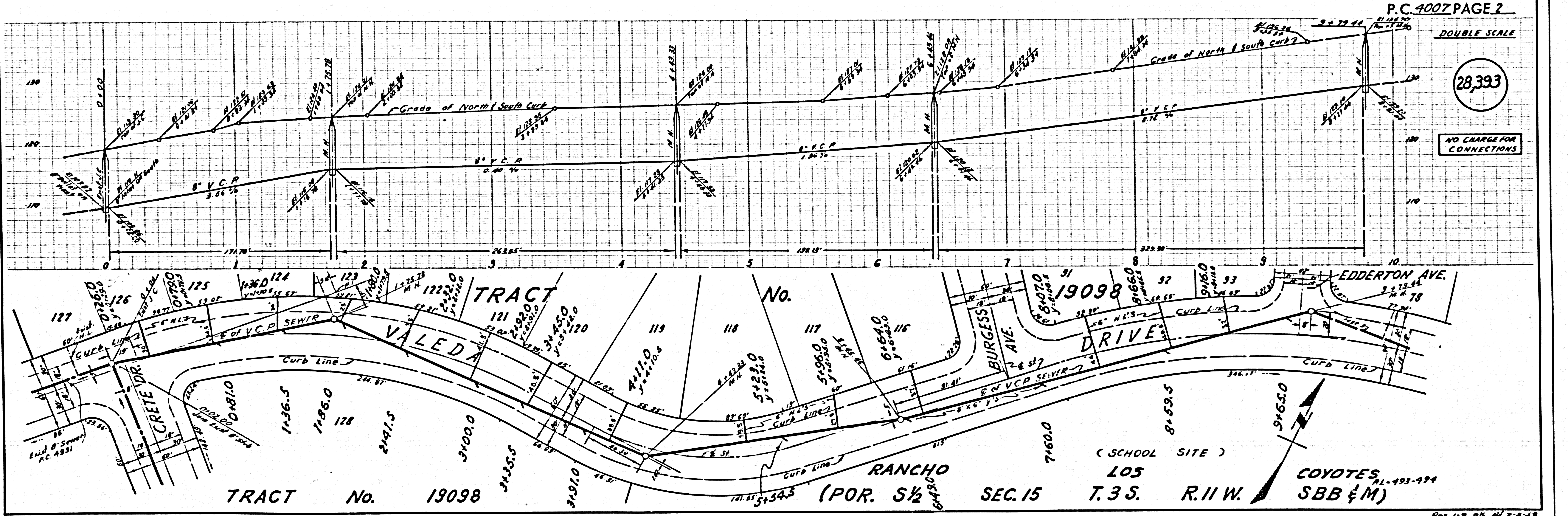
- NOTE:
 1. PROFILE STAKES ON THE PROPERTY LINE OR PROPERTY LINES PRODUCED AT RIGHT ANGLES TO THE SEWER LINE AT THE CENTER LINE OF EACH MANHOLE.
 2. NO REPRESENTATIVE OF THE COUNTY ENGINEER WILL SURVEY OR LAYOUT ANY PORTION OF THE WORK.
 3. THE OWNER OF THE APPROVED REPRESENTATIVE SHALL FURNISH THE COUNTY ENGINEER WITH GRADE SHEETS AND STATION FOR ALL HOUSE LATERALS AND T-BRANCHES AND SHALL FURNISH STAKES FOR THEM AT THEIR PROPER LOCATIONS WITH STATIONING PLANNED THERE. ANY CHANGE IN LOCATION SHALL BE PROMPTLY BY WRITING BY THE OWNER OR HIS REPRESENTATIVE.
 4. NO REVISIONS SHALL BE MADE IN THESE PLANS WITHOUT THE APPROVAL OF THE COUNTY ENGINEER.
 5. USE STANDARD MANHOLE FRAMES AND COVERS, S.A-117.
 6. USE STANDARD STRENGTH PIPE EXCEPT AS NOTED.
 7. USE CEMENT MORTAR "WEDGE LOCK" OR "WEDGE SEAL" FOR ALL WRITTEN CLAY PIPE JOINTS, PER SPEC'S SECTION 35 (40). REINFORCE ALL TRINCHES WITHIN PARAP AREA TO MEET L. A. COUNTY ROAD DEPT., OR CALIF. STATE HIGHWAY DEPT. REQUIREMENTS IN ACCORDANCE WITH PERMITS.
 8. SHOW FOUR FEET OF SEWER AT POINTS OF INTERFERENCE WITH POLES, OR WHEN COVER IS LESS THAN FOUR FEET PER S-D-172 CASE III.
 9. HOUSE LATERALS TO BE CONSTRUCTED WITH SWIFTS AT PROPERTY LINE 5' PER BELOW CURB GRADE EXCEPT AS NOTED.
 10. ALL STRUCTURES SHALL BE BUILT PER STRUCTURES, S-A-104.
 11. FOR ALLOWABLE LEAKAGE TEST USE FORMULA $Q = 1.5 \times 10^{-4} \times L \times H^3$ PER SPEC'S, SEC. 54
 12. MANHOLE TOPS IN UNIMPROVED AREAS SHALL BE 6" ABOVE FINISHED GRADE.
 13. THE CONTRACTOR SHALL SATISFY HIMSELF OF ALL SUBSTRUCTURES AND SHALL BE RESPONSIBLE FOR THEIR LOCATION.
 14. NO CONSTRUCTION WILL BE PERMITTED IN FILLED AREAS UNLESS ACCEPTABLE CERTIFICATION IS SUBMITTED TO THE CONSTRUCTION DIVISION OF THE COUNTY ENGINEER'S DEPARTMENT THAT COMPACTION IS GREATER THAN 90%.
 15. IF COMPACTION IS LESS THAN 90%, THE SEWER MUST BE GRADED AS SHOWN ON PLANS (PER S & B 164).
 16. IF COMPACTION IS GREATER THAN 90%, CRAWLING IS NOT REQUIRED. INVERT JOINT COMPOUND MUST BE SUBSTITUTED FOR CEMENT MORTAR FOR ALL JOINTS IN FILLED AREAS.
 17. THE PRIVATE ENGINEER IS TO FURNISH THE HOUSE LATERAL DEPTH AT THE PROPERTY LINE BELOW THE TOP OF CURB ELEVATION FOR EACH HOUSE LATERAL ON THE GRADE SHEET.
 18. STANDARD SPECIFICATIONS DATED MAY 15, 1959 APPLY IN THE CONSTRUCTION OF THIS PROJECT.

NO CHARGE FOR CONNECTIONS
 Enclosure to 5-7-58

NOTE:
 GRADES TO WHICH THIS IMPROVEMENT IS TO BE CONSTRUCTED ARE SHOWN ON PLANS AND PROFILE. GRADE POINTS FOR TOP OF CURB, CENTER LINE OF STREET, OR CENTER LINE OF ALLEYS ARE SHOWN BY CIRCLES ON PROFILES. AT ALL POINTS BETWEEN DESIGNATED POINTS THE GRADE SHALL BE ESTABLISHED SO AS TO CONFORM TO A STRAIGHT LINE DRAWN BETWEEN SAID DESIGNATED POINTS.
 ELEVATIONS ARE IN FEET ABOVE U.S. F.C. & S.F. LEVEL DATUM OF 1929.
 THESE DRAWINGS AND THE DATA HEREON ARE HEREBY MADE A PART OF THE SPECIFICATIONS.
 BEFORE WORK CAN BE STARTED, THE CONTRACTOR MUST OBTAIN A PERMIT TO EXCAVATE IN COUNTY STREETS FROM THE L. A. COUNTY ROAD DEPT., DIST. DIV. 4 AND MAKE A REPORT WITH THE COUNTY ENGINEER, ROOM 204 PAM AMERICAN BUILDING, 210 SO. BROADWAY, LOS ANGELES, CALIF. TO COVER THE COST OF CONSTRUCTION INSPECTION AND RECORD PLANS.
 APPROVAL OF THIS PLAN BY THE COUNTY OF LOS ANGELES DOES NOT CONSTITUTE A REPRESENTATION AS TO THE ACCURACY OF THE LOCATION OF OR THE EXISTENCE OR NON-EXISTENCE OF ANY UNDERGROUND UTILITY PIPE OR STRUCTURE WITHIN THE LIMITS OF THE PROJECT. THIS NOTE APPLIES TO ALL PAGES.
 IF WORK IS TO BE DONE IN A STATE HIGHWAY, A PERMIT MUST BE OBTAINED FROM THE STATE OF CALIFORNIA, DIVISION OF HIGHWAYS, 126 SOUTH SPRING STREET.
COUNTY OF LOS ANGELES, CALIFORNIA
 APPROVED, JOHN A. LAMBE, COUNTY ENGINEER
 APPROVED, C. C. CAMPBELL, CHIEF ENGINEER
 BY [Signature] BY [Signature]
 SANITATION ENGINEER OFFICE ENGINEER
 CHECKED BY [Signature] 7-20-58
 OFFICE OF COUNTY ENGINEER, R.C. E. NO. 9406

SUBMITTED BY: [Signature] 7-8-58
 LOS ANGELES REGIONAL ENGINEER, R.C.E. NO. 3877

P.C. 4007, PAGE 2



28,393

NO CHARGE FOR CONNECTIONS

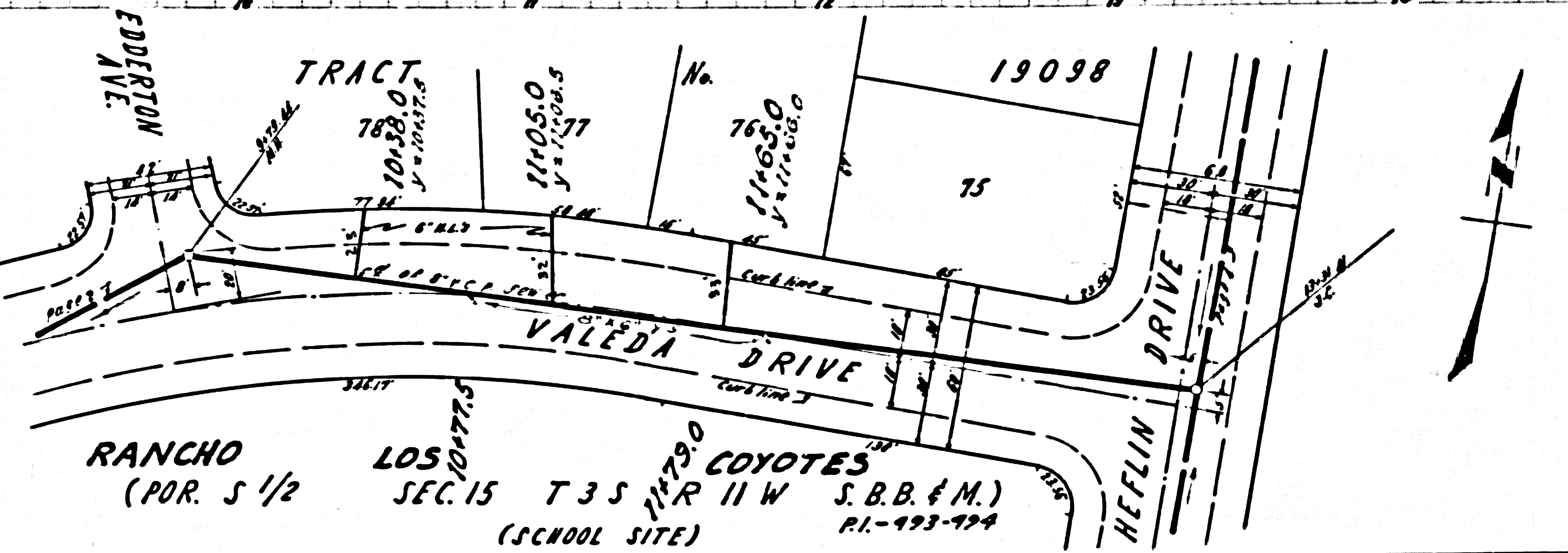
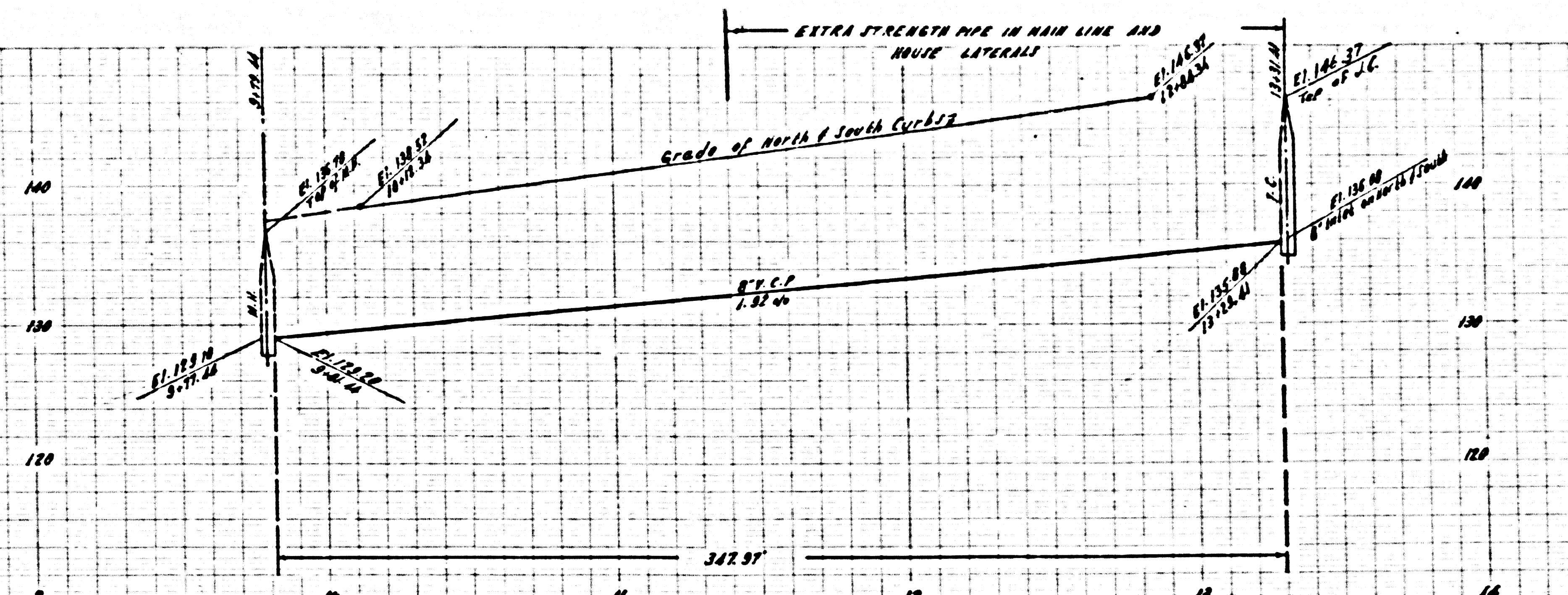
TRACT No. 19098

RANCHO LOS COYOTES
 (POR. S 1/2 SEC. 15 T. 3 S. R. 11 W.)
 (SCHOOL SITE)
 LOS COYOTES SBB & M

Double Scale

NO CHARGE FOR CONNECTIONS

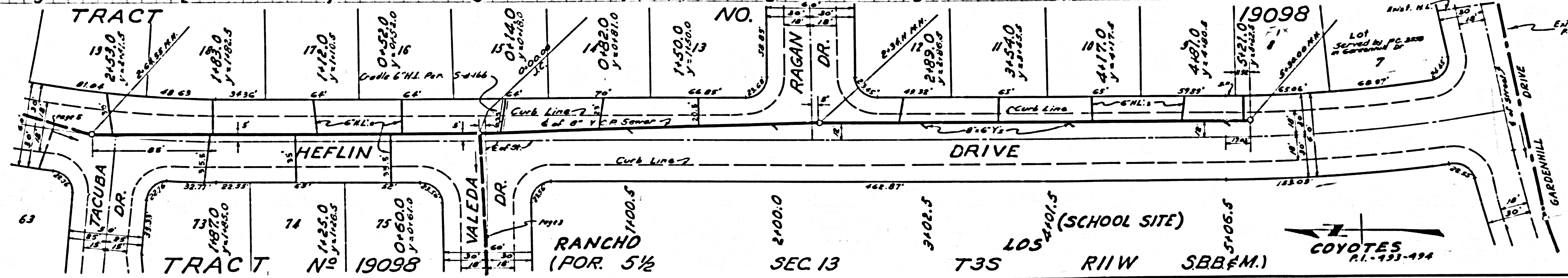
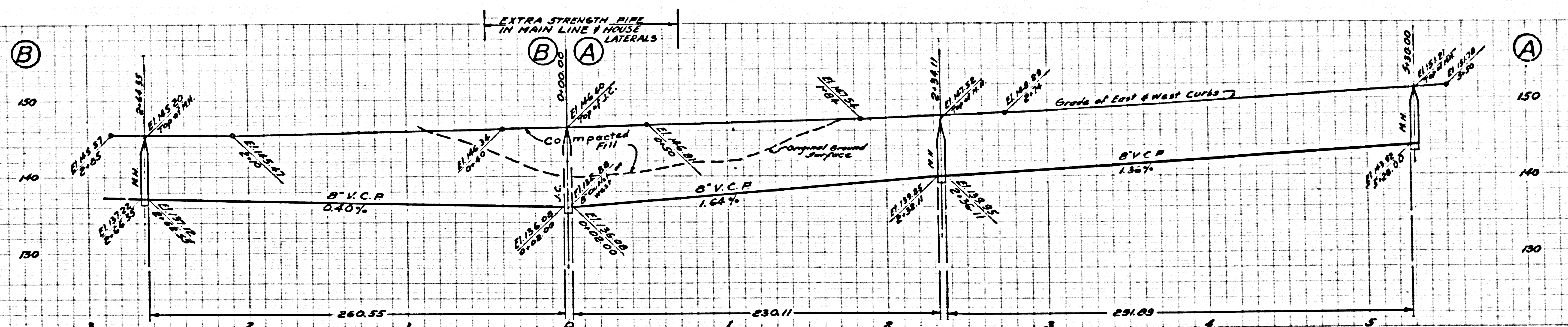
28,394



Double Scale

NO CHARGE FOR CONNECTIONS

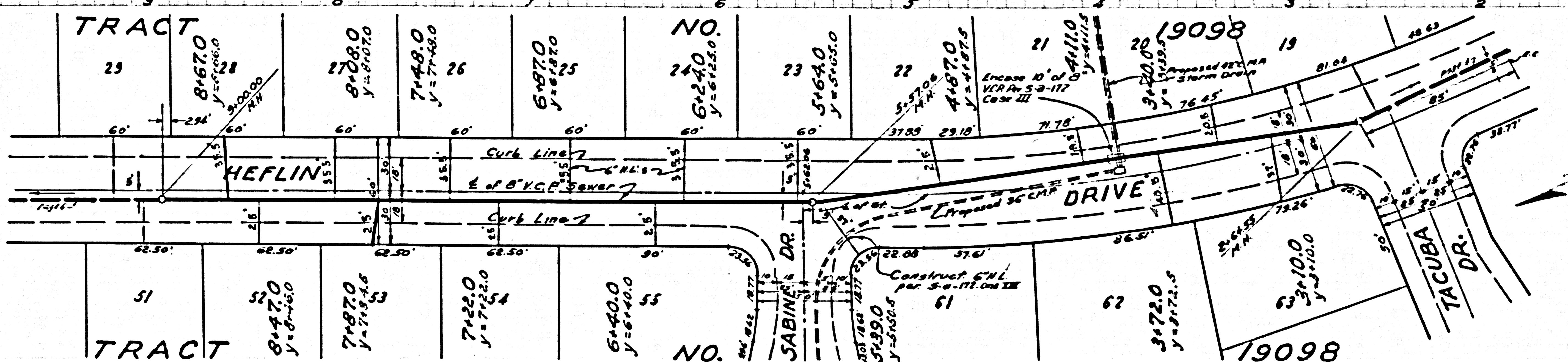
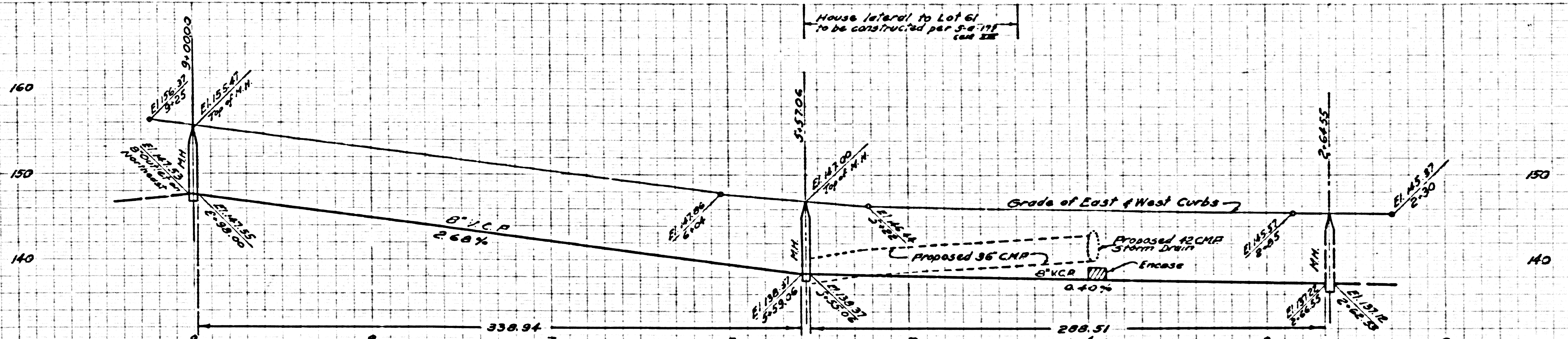
28,395



Double Scale

NO CHARGE FOR CONNECTIONS

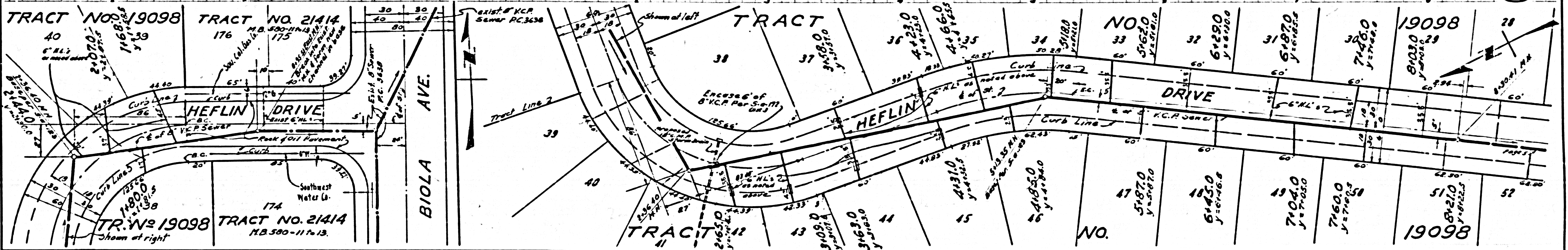
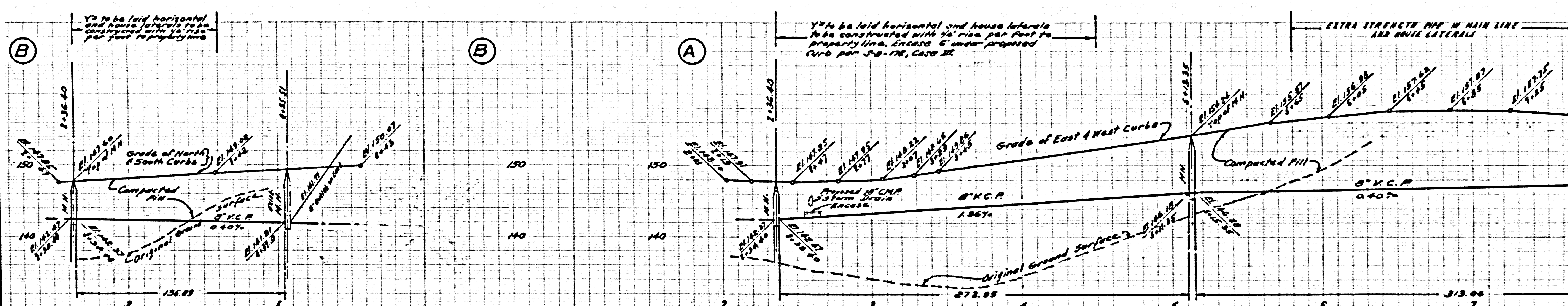
28,396



Double Scale

NO CHARGE FOR CONNECTIONS

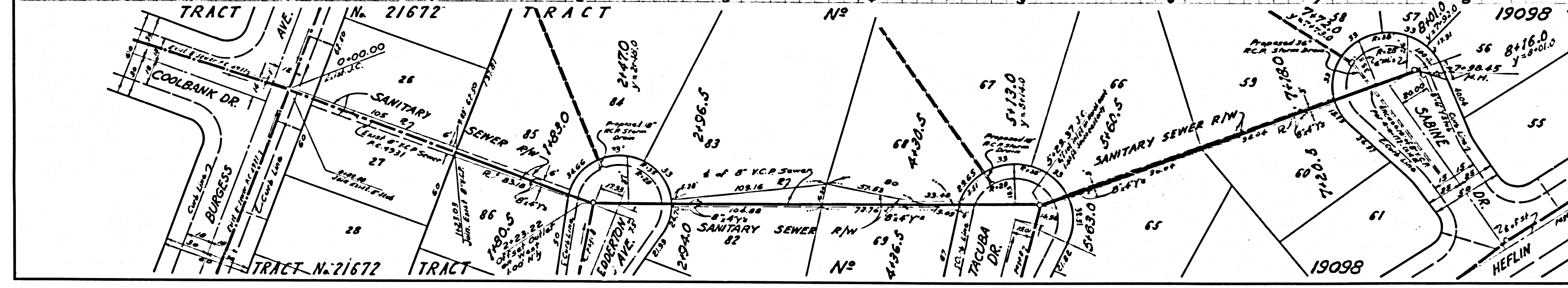
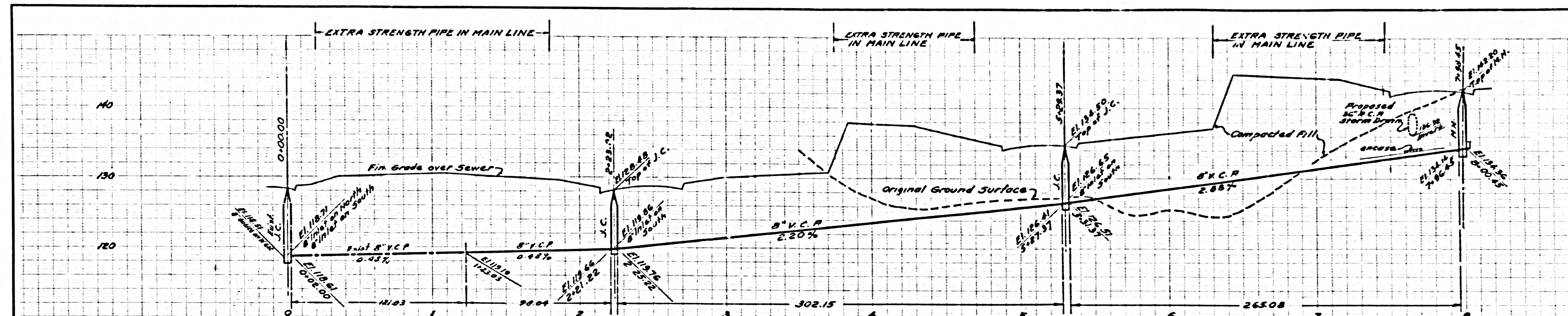
28,397



Double Scale

NO CHARGE FOR CONNECTIONS

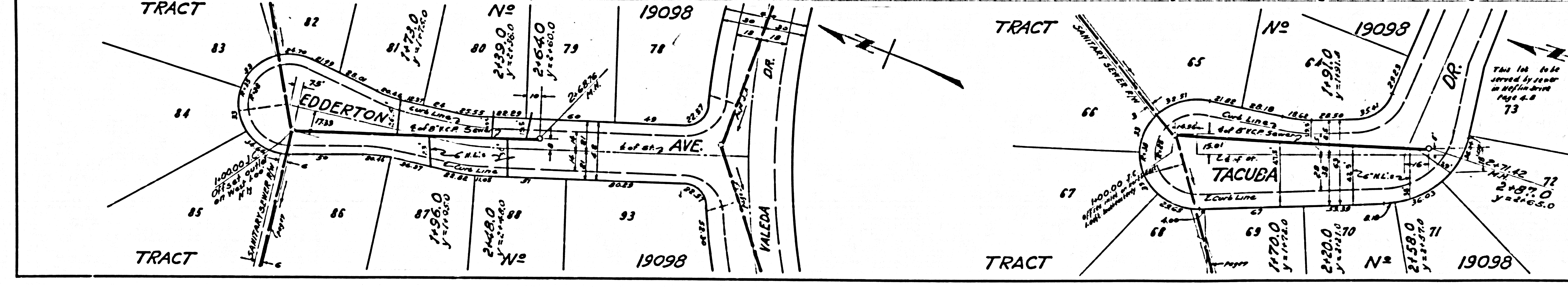
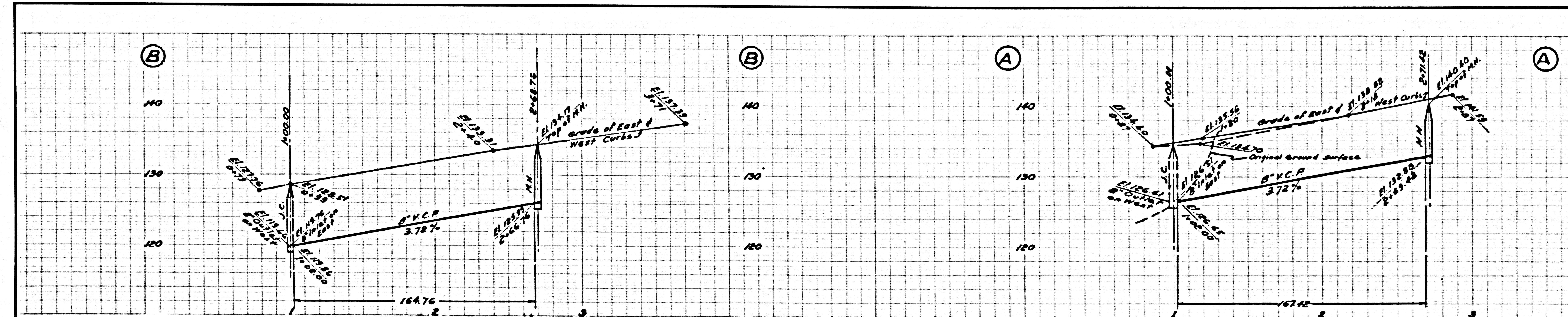
28,398



Double Scale

NO CHARGE FOR CONNECTIONS

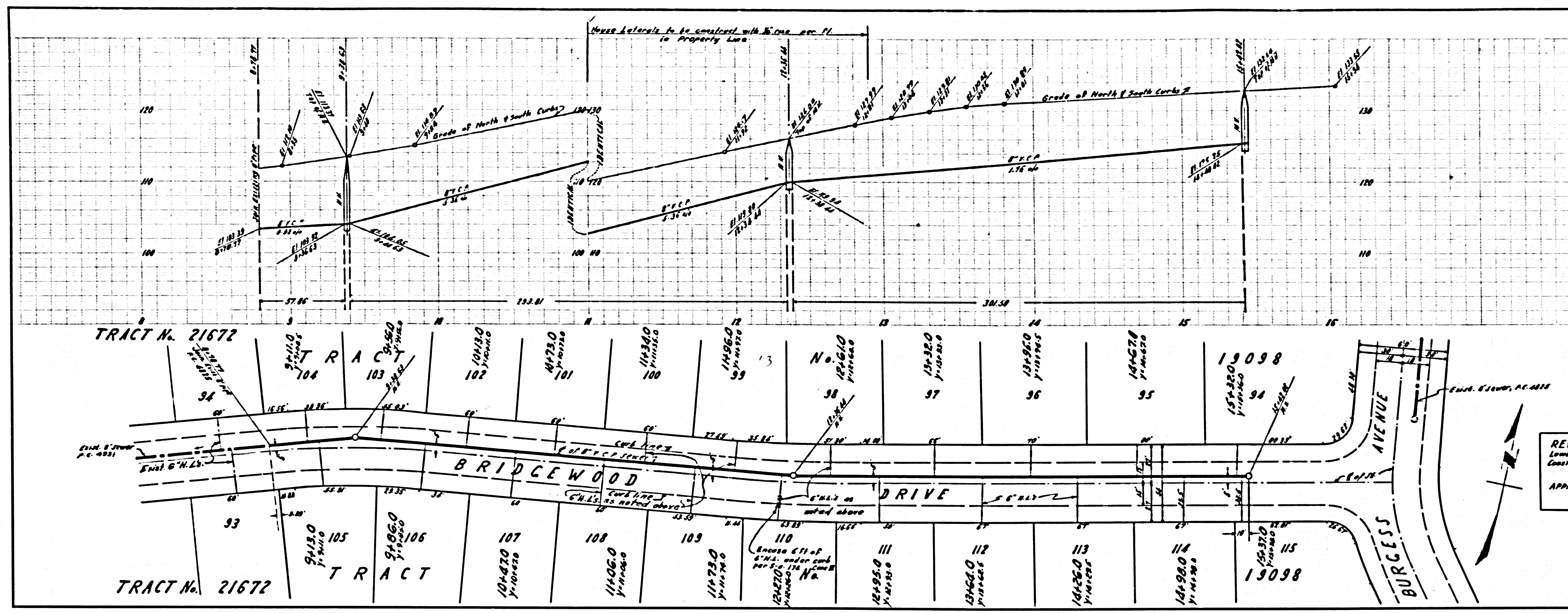
28,399



Double Scale

NO CHARGE FOR CONNECTORS

28,400



REVISION
 Lower curb grade from Sta 3+40 to Sta 10+74
 Center H.L.'s with 1/2" rise per ft. Sta. 11+00 to 12+00
 APPROVED BY: *R. F. Perkins* 7-23-57
 R. C. E. 11636

U. S. G. 100 00 CAL. BLUE PRINT SHEET NO. 2