

B.M. 38.455 El. 594.677
 (B.M. of 2 ft. of conc. headwall)
 N.E. Cor. of Puente St. & Grand Ave

NOTE:
 LOTS 1 thru 7 INCLUSIVE
 ARE SERVED FROM P.C. 3409

SAN DIMAS BLDG. DIST. NO. 10

- NOTES
1. PROVIDE STAKES ON THE PROPERTY LINE OR PROPERTY LINES PRODUCED AT RIGHT ANGLES TO THE SEWER LINE AT THE CENTER LINE OF EACH MANHOLE.
 2. NO REPRESENTATIVE OF THE COUNTY ENGINEER WILL SURVEY OR LAYOUT ANY PORTION OF THE WORK.
 3. THE OWNER OR HIS AUTHORIZED REPRESENTATIVE SHALL FURNISH THE COUNTY ENGINEER WITH GRADE SHEETS AND STATION FOR ALL HOUSE LATERALS AND Y BRANCHES AND SHALL PROVIDE STAKES FOR THEM AT THEIR PROPER LOCATIONS WITH STATIONING PLAINLY MARKED. ANY CHANGE IN LOCATION SHALL BE REQUESTED IN WRITING BY THE OWNER OR HIS REPRESENTATIVE.
 4. NO REVISIONS SHALL BE MADE IN THESE PLANS WITHOUT THE APPROVAL OF THE COUNTY ENGINEER.
 5. USE STANDARD MANHOLE FRAMES AND COVERS, S.A. 117, EXCEPT AS NOTED.
 6. USE STANDARD STRENGTH PIPE EXCEPT AS NOTED.
 7. USE CEMENT MORTAR FOR ALL VITRIFIED CLAY JOINTS.
 8. RESURFACE ALL TRENCH WITHIN PAVED AREAS TO MEET L. & COUNTY ROAD DEPT. OR CALIF. STATE HIGHWAY DEPT. REQUIREMENTS IN ACCORDANCE WITH PERMITS.
 9. BRICKS FOR FEET OF SEWER AT POINTS OF INTERFERENCE WITH POLES, S.A. 119.
 10. HOUSE LATERALS TO BE CONSTRUCTED WITH INVERTS 1 PROPERTY LINE 6 INCHES BELOW CURB GRADE EXCEPT AS NOTED.
 11. ALL STRUCTURES SHALL BE BRICK BURNED STRUCTURES, S.A. 114, EXCEPT AS NOTED.
 12. FOR ALLOWABLE LEAKAGE TEST USE FORMULA NO. 1 SPEC. S. SEC. II.
 13. MANHOLE TOPS IN UNIMPROVED RIGHTS-OF-WAY TO BE 6" ABOVE FINISHED GRADE.
 14. The Private Engineer is to furnish the House Lateral depth at the property line below the top of curb structure for each house lateral, on the grade sheet.

PROFILE ALIGNMENT AND GRADE OF P.C. 4008
 SANITARY SEWERS PAGE 1

TRACT N° 19045 (23,356)

PRIVATE CONTRACT NO. 1008

W.S. 47
 5 SHEETS, 5 PAGES

SCALE: 1" = 10' APRIL, 1956

PREPARED IN THE OFFICES OF
 L.F. PACK

BY: L.F. Pack
 REG. C. E. NO. 7448

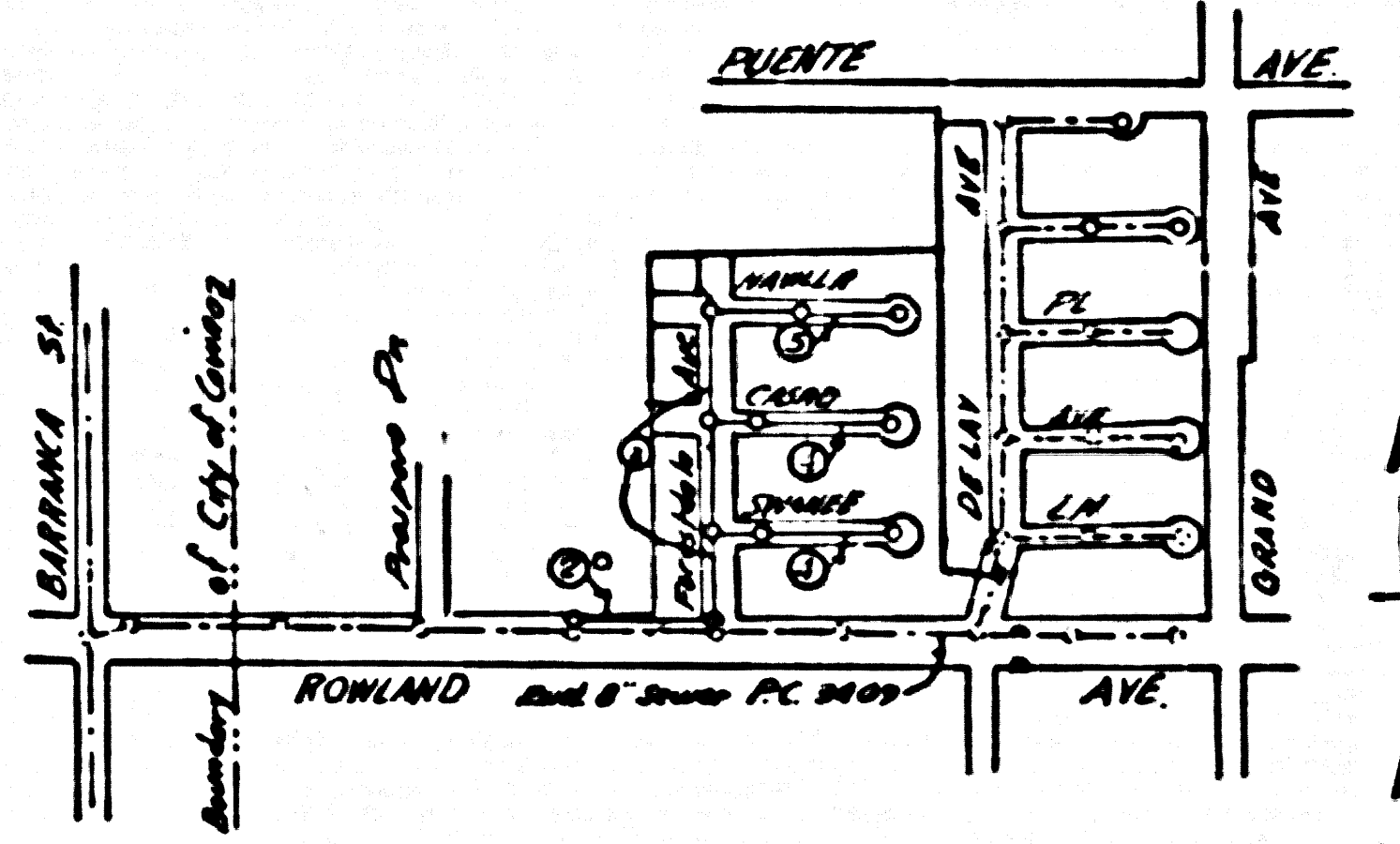
FOR LEGEND SEE PLAN NO. S-A-64

NOTE:
 GRADES TO WHICH THIS IMPROVEMENT IS TO BE CONSTRUCTED ARE SHOWN ON PLANS AND PROFILE GRADE POINTS FOR TOP OF CURB, CENTER LINE OF STREETS, OR CENTER LINE OF ALLEYS ARE SHOWN BY CIRCLES ON PROFILES AT ALL POINTS BETWEEN MANHOLES. POINTS THE GRADE SHALL BE ESTABLISHED SO AS TO COMPOSE TO A STRAIGHT LINE BETWEEN SAID INDICATED POINTS.
 ELEVATIONS ARE IN FEET ABOVE U.S.C&G.S. MEAN SEA LEVEL DATUM OF 1929.
 THESE DRAWINGS AND THE DATA HEREON ARE HEREBY MADE A PART OF THE SPECIFICATIONS.
 WORK SHALL BE CONSTRUCTED ACCORDING TO SPECIFICATIONS ON FILE IN THE OFFICE OF THE COUNTY ENGINEER AND SHALL BE PROSECUTED ONLY IN THE PRESENCE OF THE COUNTY ENGINEER.
 BEFORE WORK CAN BE STARTED, THE CONTRACTOR MUST OBTAIN A PERMIT TO EXCAVATE IN COUNTY STREETS FROM THE L. & COUNTY ROAD DEPT., 108 W. 3RD ST. AND MAKE A DEPOSIT WITH THE COUNTY ENGINEER, ROOM 124 SAN AMERICAN BLDG., 232 SO. BROADWAY SUFFICIENT TO COVER THE COST OF CONSTRUCTION INSPECTION AND RECORD PLANS.
 APPROVAL OF THIS PLAN BY THE COUNTY OF LOS ANGELES DOES NOT CONSTITUTE A REPRESENTATION AS TO THE ACCURACY OF THE LOCATION OF OR THE EXISTENCE OR NON-EXISTENCE OF ANY UNDERGROUND UTILITY PIPE, OR STRUCTURE WITHIN THE LIMITS OF THIS PROJECT. THIS NOTE APPLIES TO ALL PAGES.
 IF WORK IS TO BE DONE IN A STATE HIGHWAY, A PERMIT MUST BE OBTAINED FROM THE STATE OF CALIFORNIA, DIVISION OF HIGHWAYS, 120 SOUTH SPRING STREET.

COUNTY OF LOS ANGELES, CALIFORNIA

APPROVED, JOHN A. LAMBE, COUNTY ENGINEER APPROVED, A. M. RAWN, CHIEF ENGINEER

BY: J.P. Collins, SANITATION ENGINEER BY: J. P. Rahn, OFFICE ENGINEER
 CHECKED BY: B.K. Wade, 6-14-56
 OFFICE OF COUNTY ENGINEER, BLDG. C. E. NO. 3406

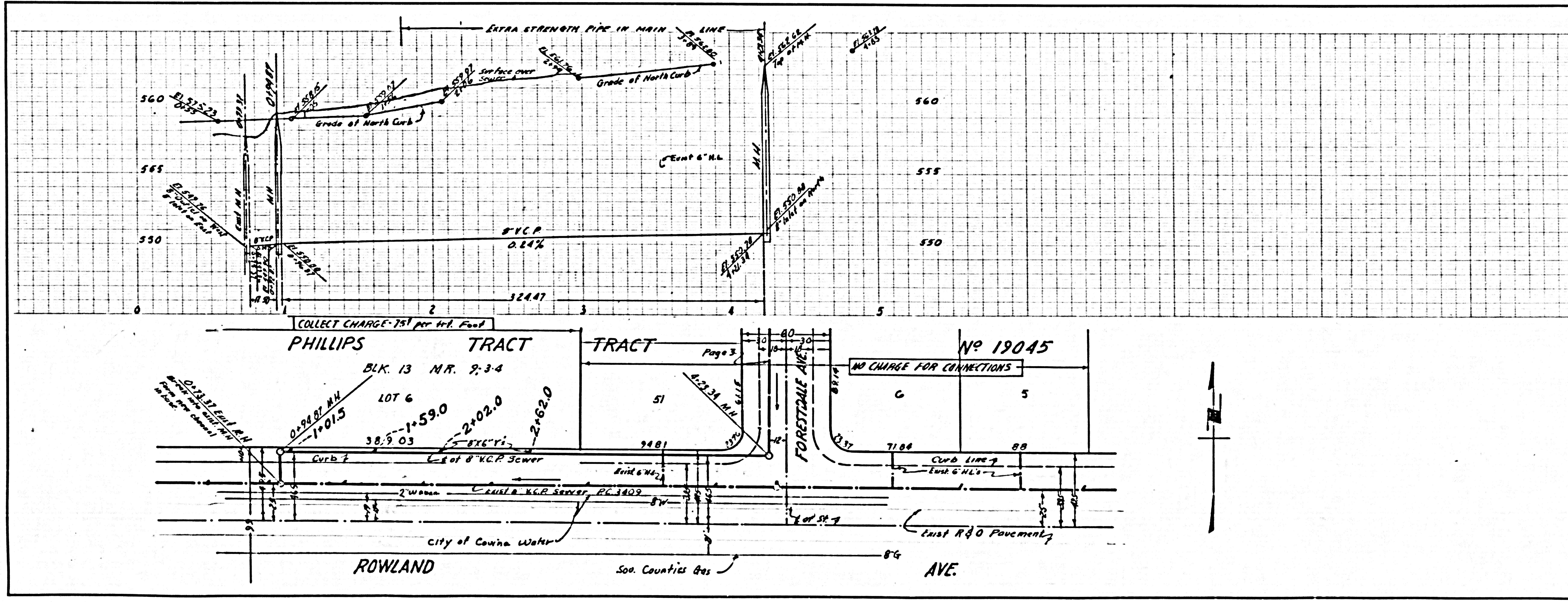


INDEX MAP
 TRACT N° 19045
 P.C. 4008

Scale 1"=60'

COLLECT CHARGES AS INDICATED

dated 5-28-56 M. Karen



P.C. 4008 PAGE 2

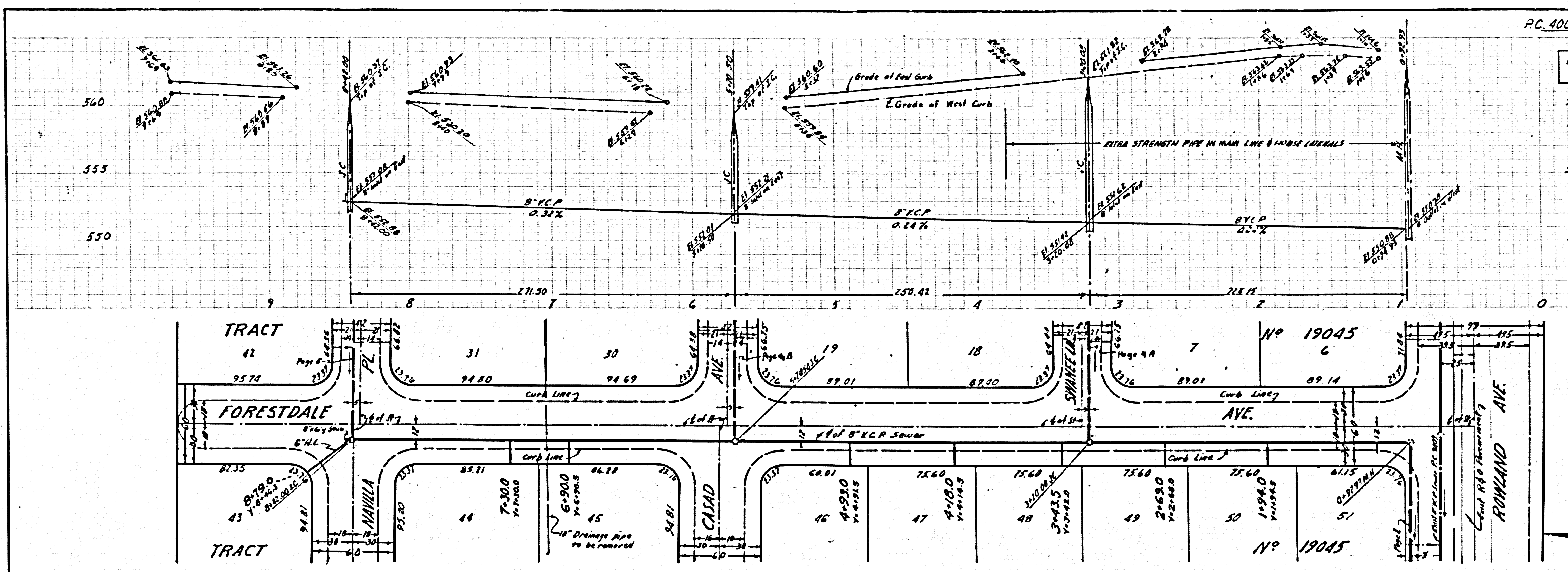
COLLECT CHARGES AS INDICATED

(23,357)

P.C. 4008

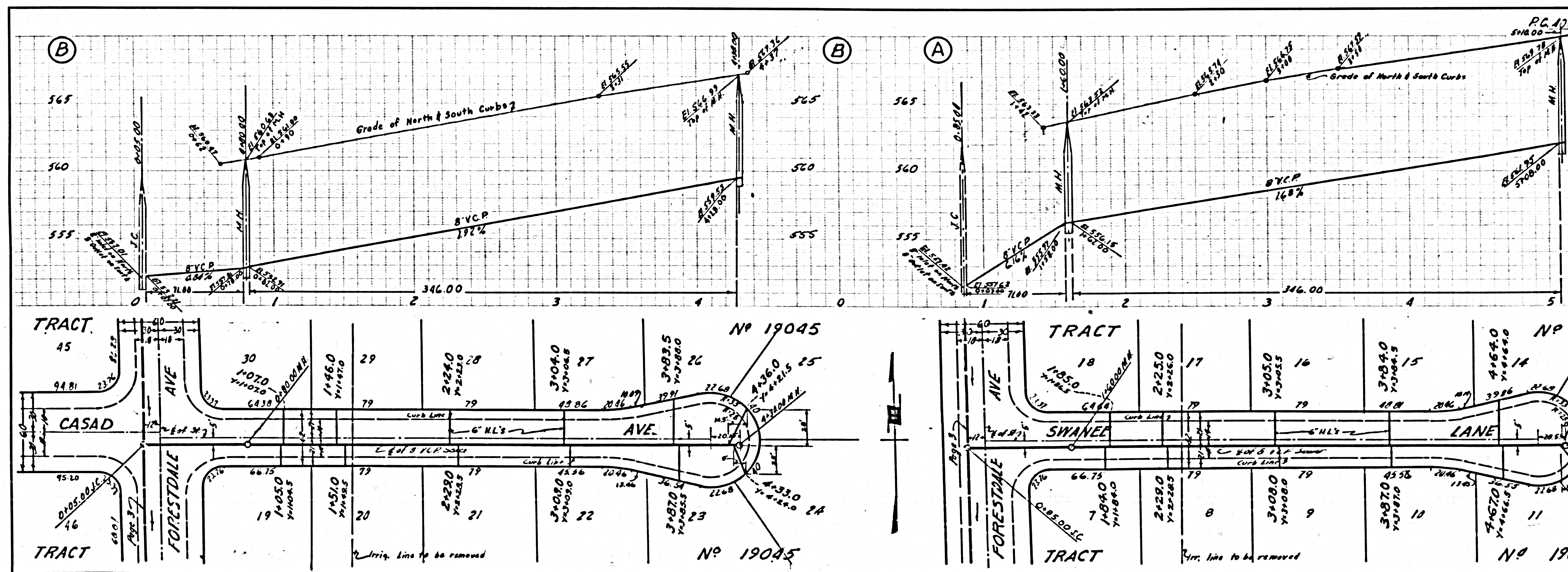
NO CHARGE FOR CONNECTIONS

23,358



NO CHARGE FOR CONNECTIONS

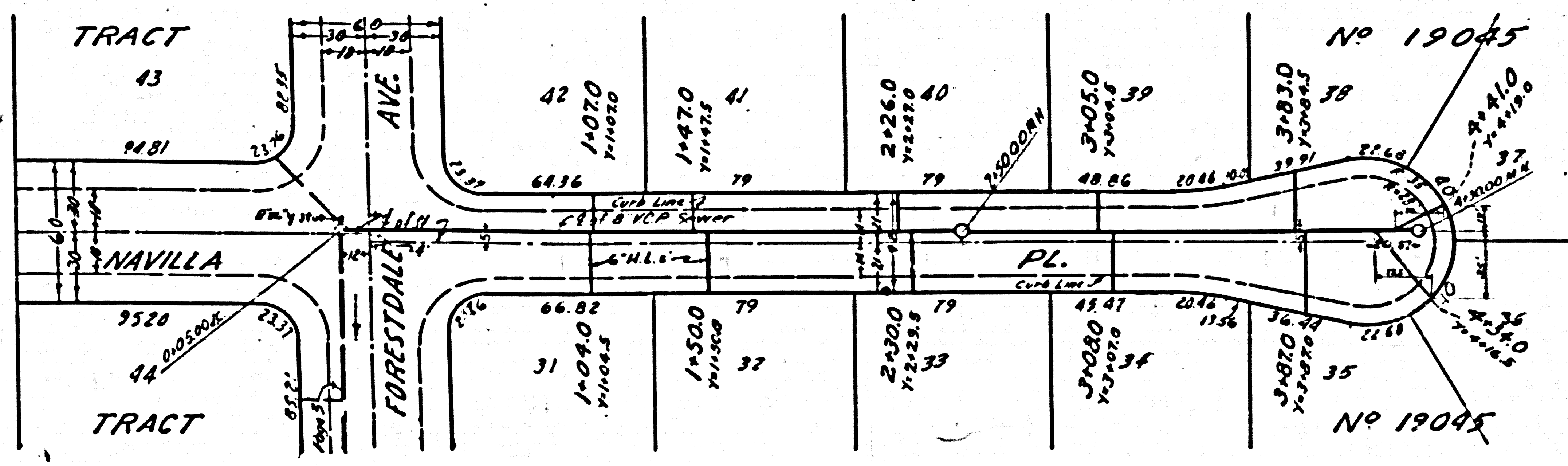
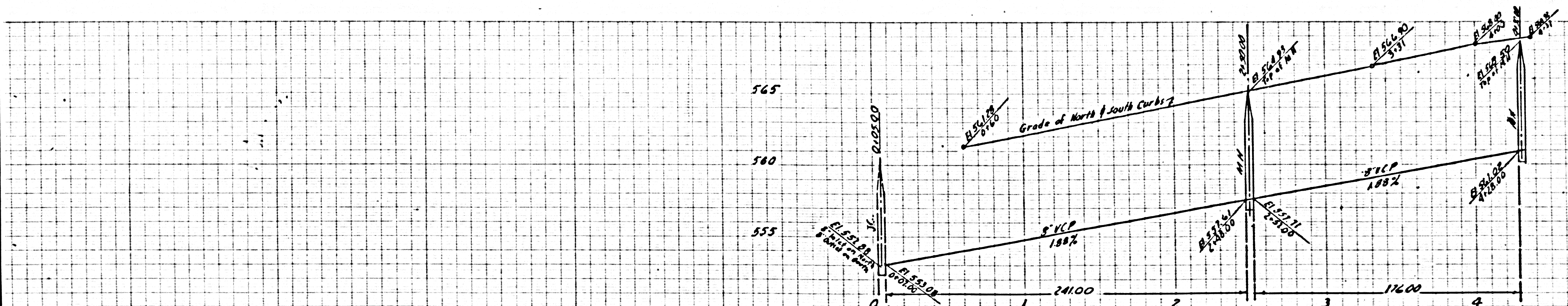
23,359



800470

NO CHARGE FOR CONNECTION

23,360



800429