

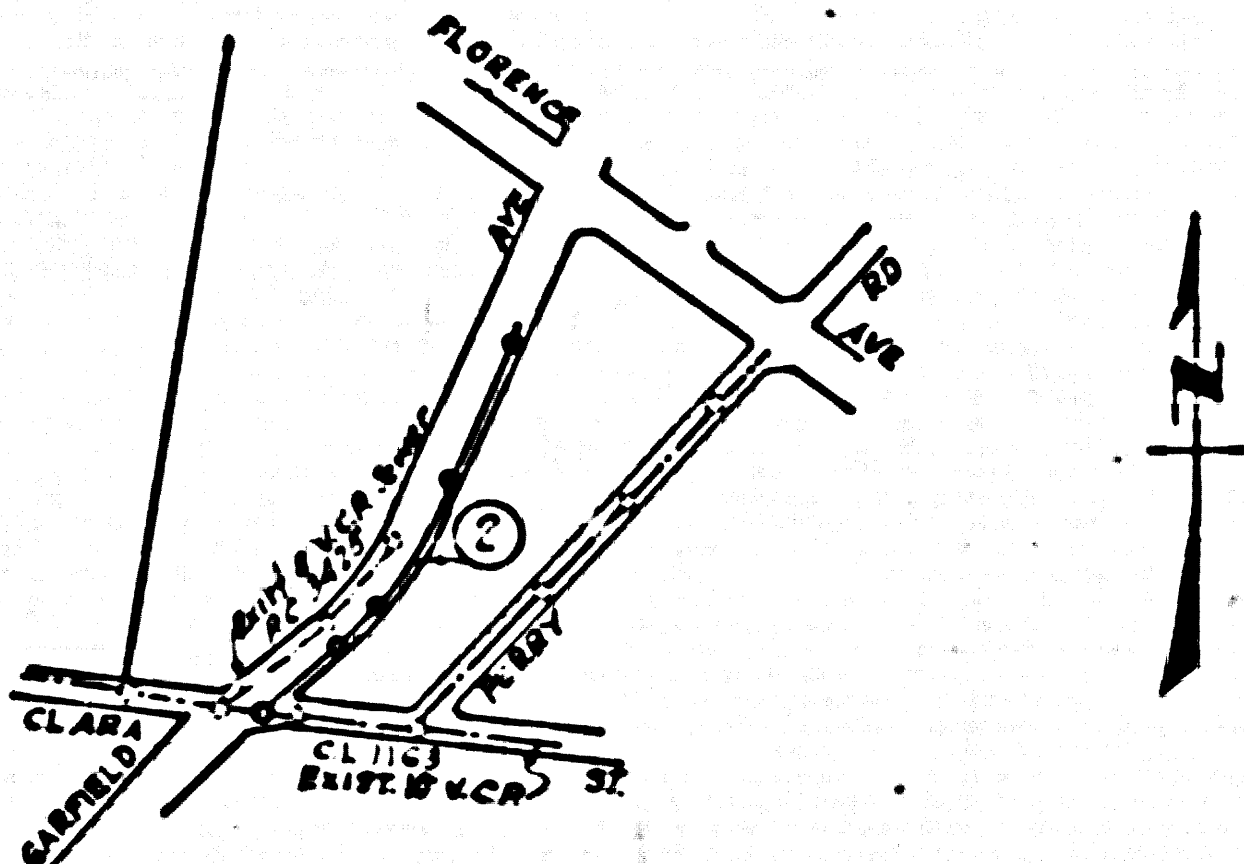
B.M.H.F. 67 - 117.219 F.B. 1219 pg. 16
 Garfield Ave (E side) 75' S. of Clara St
 B & Spk. in N. side Conc. Drive to House No 7108

FIRESTONE BLDG. DIST. NO. 1

- NOTES**
- PROVIDE STAKES ON THE PROPERTY LINE OR PROPERTY LINES PRODUCE AT RIGHT ANGLE TO THE SEWER LINE AT THE CENTER LINE OF EACH MANHOLE.
 - NO REPRESENTATIVE OF THE COUNTY ENGINEER WILL SURVEY OR LAYOUT ANY PORTION OF THE WORK.
 - THE OWNER OR HIS APPOINTED REPRESENTATIVE SHALL FURNISH THE COUNTY ENGINEER WITH GRADE SHEETS AND STATION FOR ALL HOUSE LATERALS AND T-BRANCHES AND SHALL PROVIDE STAKES FOR THEM AT THEIR PROPER LOCATIONS WITH STATIONING AND PLAINLY MARKED. ANY CHANGE IN LOCATION SHALL BE REQUESTED IN WRITING BY THE OWNER OR HIS REPRESENTATIVE.
 - NO REVISIONS SHALL BE MADE IN THESE PLANS WITHOUT THE APPROVAL OF THE COUNTY ENGINEER.
 - USE STANDARD MANHOLE FRAMES AND COVERS, S.A. 117, EXCEPT AS NOTED.
 - USE STANDARD STRENGTH PIPE EXCEPT AS NOTED.
 - USE CEMENT MORTAR FOR ALL VITRIFIED "LAY PIPE JOINTS.
 - REPAIR AND PATCH WITHIN PAVED AREA TO MEET L.A. COUNTY ROAD DEPT. OR CALIF. STATE HIGHWAY DEPT. REQUIREMENTS IN ACCORDANCE WITH PERMITS.
 - INDICATE POINTS OF BEGINNING AND END OF INTERFERENCE WITH POLY. S.A. 117.
 - HOUSE LATERALS TO BE CONSTRUCTED WITHIN PERMITS AS PROPERTY LINE. 6" MIN. SHOW CURB GRADE EXCEPT AS NOTED.
 - ALL STRUCTURES SHALL BE SINCE SEWER 7 1/2" CRUMB, S.A. 104, EXCEPT AS NOTED.
 - FOR ALLOWABLE BRACKS USE FORMER NO. 1-1-1 S.P.C.-1, S.P.C. II.
 - MANHOLE TOPS IN UNIMPROVED RIGHTS-OF-WAY TO BE 6" ABOVE FINISHED GRADE.
 - THE PRIVATE ENGINEER IS TO FURNISH THE HOUSE LATERAL DEPTH AT THE PROPERTY LINE BELOW THE TOP OF PROPERTY LINE ELEVATION FOR EACH HOUSE LATERAL, ON GRADE SHEET.

PROFILE ALIGNMENT AND GRADE OF **P.C. 4012**
SANITARY SEWERS PAGE **1**
 TO BE CONSTRUCTED IN
GARFIELD AVE.
FROM CLARA ST. TO 1050' NORTHERLY

PRIVATE CONTRACT NO. 4012
 W.S. 36
 - 1 SHEET - 2 PAGES (23,437)
 SCALE: 1" = 6' HORIZ. 1" = 2' VERT. MAY, 1956
 PREPARED IN THE OFFICES OF
OLSON SURVEYING SERVICE (2)
 BY *Paul A. Phillips* REG. C.E. NO. 7820
 FOR LEGEND SEE PLAN NO. S-A-64



INDEX MAP
P.C. 4012
 Scale 1"=600'

NO CHARGE FOR CONNECTIONS
-K Oude 4-15-56

NOTES

GRADES TO WHICH THIS IMPROVEMENT IS TO BE CONSTRUCTED ARE SHOWN ON PLANS AND PROFILES. GRADE POINTS FOR TOP OF CURB, CENTER LINE OF STREETS, OR CENTER LINE OF ALLEYS ARE SHOWN BY CIRCLES ON PROFILES. AT ALL POINTS BETWEEN DESIGNATED POINTS THE GRADE SHALL BE ESTABLISHED SO AS TO CONFORM TO A STRAIGHT LINE DRAWN BETWEEN SAID DESIGNATED POINTS.

ELEVATIONS ARE IN FEET ABOVE U.S. & B.S. MEAN SEA LEVEL DATUM OR 1929.

THIS DRAWING AND THE DATA HEREON ARE HEREBY MADE A PART OF THE SPECIFICATIONS.

WORK SHALL BE CONSTRUCTED ACCORDING TO SPECIFICATIONS CAN FILE IN THE OFFICE OF THE COUNTY ENGINEER AND SHALL BE PROSECUTED ONLY IN THE PRESENCE OF THE COUNTY ENGINEER.

BEFORE WORK CAN BE STARTED THE CONTRACTOR MUST OBTAIN A PERMIT TO EXCAVATE IN COUNTY STREETS FROM THE L.A. COUNTY ROAD DEPT. 100 W. 5TH ST. AND MAKE A DEPOSIT WITH THE COUNTY ENGINEER, ROOM 304 PAM AMERICAN BUILDING, 238 SO. BROADWAY SUFFICIENT TO COVER THE COST OF CONSTRUCTION INSPECTION AND RECORD PLANS.

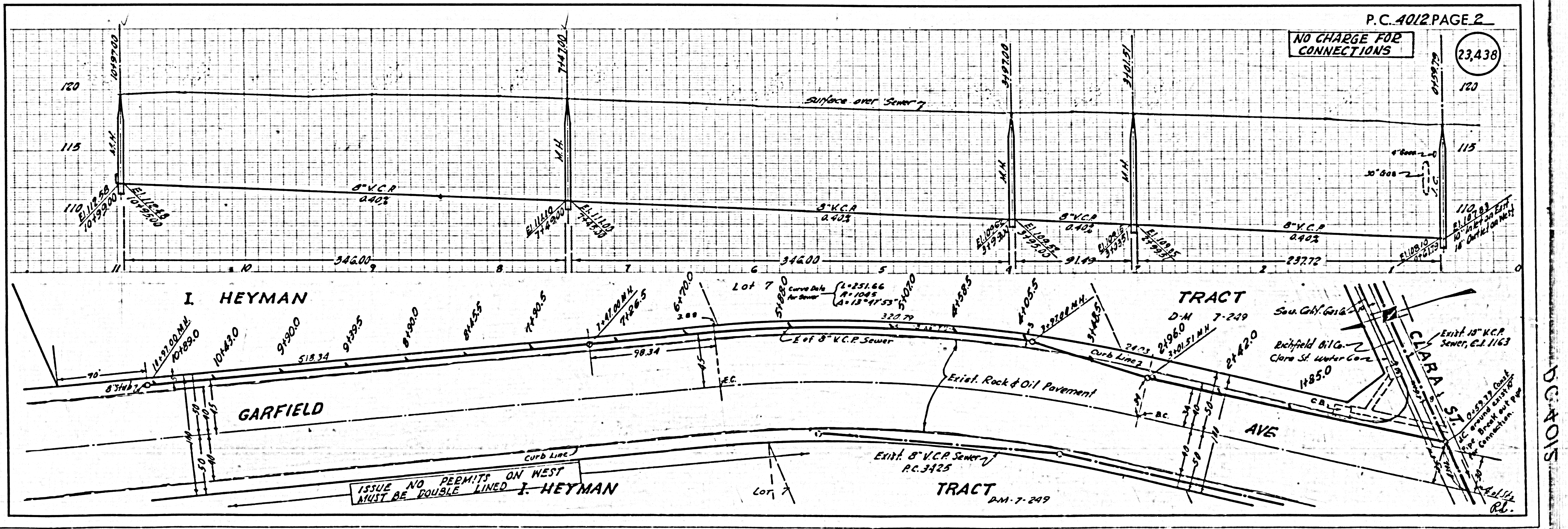
APPROVAL OF THIS PLAN BY THE COUNTY OF LOS ANGELES DOES NOT CONSTITUTE A REPRESENTATION AS TO THE ACCURACY OF THE LOCATION OF OR THE EXISTENCE OR NON-EXISTENCE OF ANY UNDERGROUND UTILITY PIPE, OR STRUCTURE WITHIN THE LIMITS OF THIS PROJECT. THIS NOTE APPLIES TO ALL PAGES.

IF WORK IS TO BE DONE IN A STATE HIGHWAY, A PERMIT MUST BE OBTAINED FROM THE STATE OF CALIFORNIA, DIVISION OF HIGHWAYS, 128 SOUTH SPRING STREET.

COUNTY OF LOS ANGELES, CALIFORNIA

APPROVED, JOHN A. LAMBE, COUNTY ENGINEER
 APPROVED, A. M. BAWN, CHIEF ENGINEER
 BY *A. P. Phillips* SANITATION ENGINEER
 BY *A. M. Bawn* OFFICE ENGINEER
 CHECKED BY *-K Oude 4-15-56*
 OFFICE OF COUNTY ENGINEER, 800 C. E. NO. 3406

Checked 9-14-56 M. Laven



P.C. 4012 PAGE 2

NO CHARGE FOR CONNECTIONS (23,438)

P.C. 4012