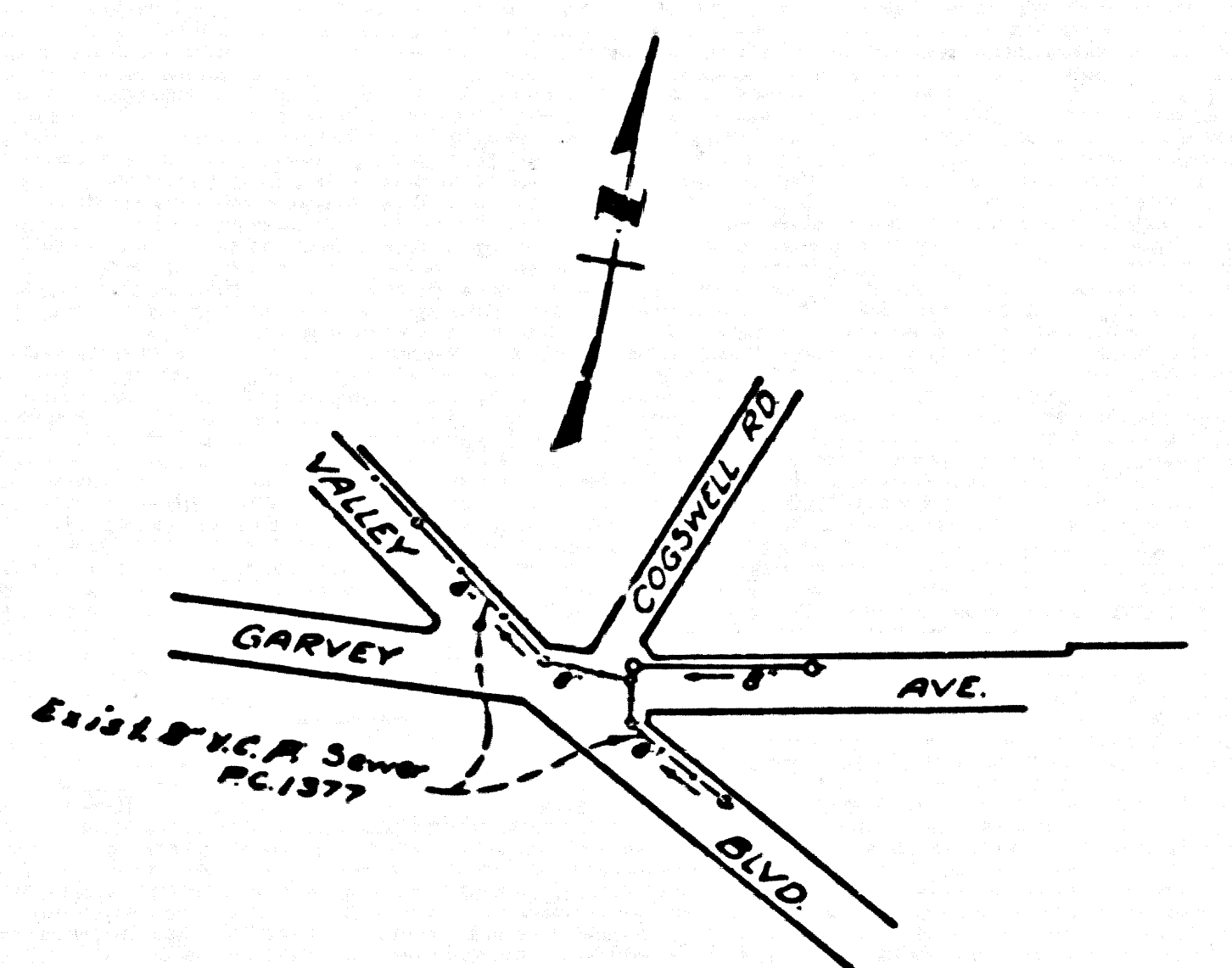


BENCH MARK 12-5
 At the int. of Garvey Ave. & Valley Blvd. 13.5' N.E. 4' from the S. edge of pvt. in Valley Blvd. 6.12' N.E. 4' from the S. curb line of Garvey Ave. prod. E'y. in a.H.M. marked L.A. County Survey Control System Traverse Station E1 Monte J-5 K.E. 2177 1952 Adj. Elev. 288.006'

INDEX TABLE

SHEET	PAGES
1	2

NO CHARGE FOR CONNECTIONS
 SK Onda 6-4-56



INDEX MAP
 SCALE 1" = 300'
 P.C. 4016

PUENTE BLDG. DIST. NO. 2

- NOTES:**
- PROVIDE STAKES ON THE PROPERTY LINE OR PROPERTY LINES PRODUCED AT RIGHT ANGLES TO THE SEWER LINE AT THE CENTER LINE OF EACH MANHOLE.
 - NO REPRESENTATIVE OF THE COUNTY ENGINEER WILL SURVEY OR LAY OUT ANY PORTION OF THE WORK.
 - THE OWNER OF THE ADJACENT REPRESENTATIVE SHALL FURNISH THE COUNTY ENGINEER WITH GRAB SHEETS AND STATION FOR ALL HOUSE LATERALS AND Y BRANCHES AND SHALL PROVIDE STAKES FOR THEM AT THEIR PROPER LOCATIONS WITH STATION AND P.N. NUMBER. ANY CHANGE IN LOCATION SHALL BE REQUESTED BY WRITING BY THE OWNER OR HIS REPRESENTATIVE. NO REVISIONS SHALL BE MADE IN THESE PLANS WITHOUT THE APPROVAL OF THE COUNTY ENGINEER.
 - USE STANDARD MANHOLE FRAMES AND COVERS, S.A. 117, EXCEPT AS NOTED.
 - USE STANDARD STRENGTH PIPE EXCEPT AS NOTED.
 - USE CEMENT MORTAR FOR ALL VITRIFIED CLAY PIPE JOINTS.
 - RESURFACE ALL TRENCH WITHIN PAVED AREA TO MEET L. A. COUNTY ROAD DEPT. OR CALIF. STATE HIGHWAY DEPT. SPECIFICATIONS BY ACCORDANCE WITH PERMITS.
 - INDICATE POINTS OF SEWER AT POINTS OF INTERFERENCE WITH POLES, S.A. 119.
 - WORKERS SHALL BE RESPONSIBLE TO CLEAR OBSTRUCTIONS FROM THE TRENCH AND TO PROTECT EXISTING UTILITIES.
 - ALL STRUCTURES SHALL BE BUILT BY THE CONTRACTOR, S.A. 114, EXCEPT AS NOTED.
 - FOR ALLOWABLE LOADS TEST USE FORMULA NO. 1, SPEC. 12C IN
 - SHOWING TOP OF UNEXCAVATED EXISTING CONCRETE FOUNDATION SHALL BE INDICATED BY DASHES.
 - EXIST. J. 10-101 TO PROPR. J.C. 0714 201 SHALL BE CONNECTED BY MEANS OF TUNNELING AND SHALL BE FILLED WITH WET COMPACTED SAND.

PROFILE ALIGNMENT AND GRADE OF **P.C. 4016**
SANITARY SEWERS PAGE **1**

TO BE CONSTRUCTED IN
GARVEY AVE. EXTENSION (22910)

PRIVATE CONTRACT NO. 4016
 W.S. 46 (2)

— 1 — SHEET, — 2 — PAGES
 SCALE: 1" = 1'-0" HORIZ. 1" = 4' VERT.
 MAY, 1956

PREPARED IN THE OFFICES OF
TREADWELL ENGINEERING CORPORATION

By W.A. Treadwell REG. C. E. NO. 410

FOR LEGEND SEE PLAN NO. S-A-64

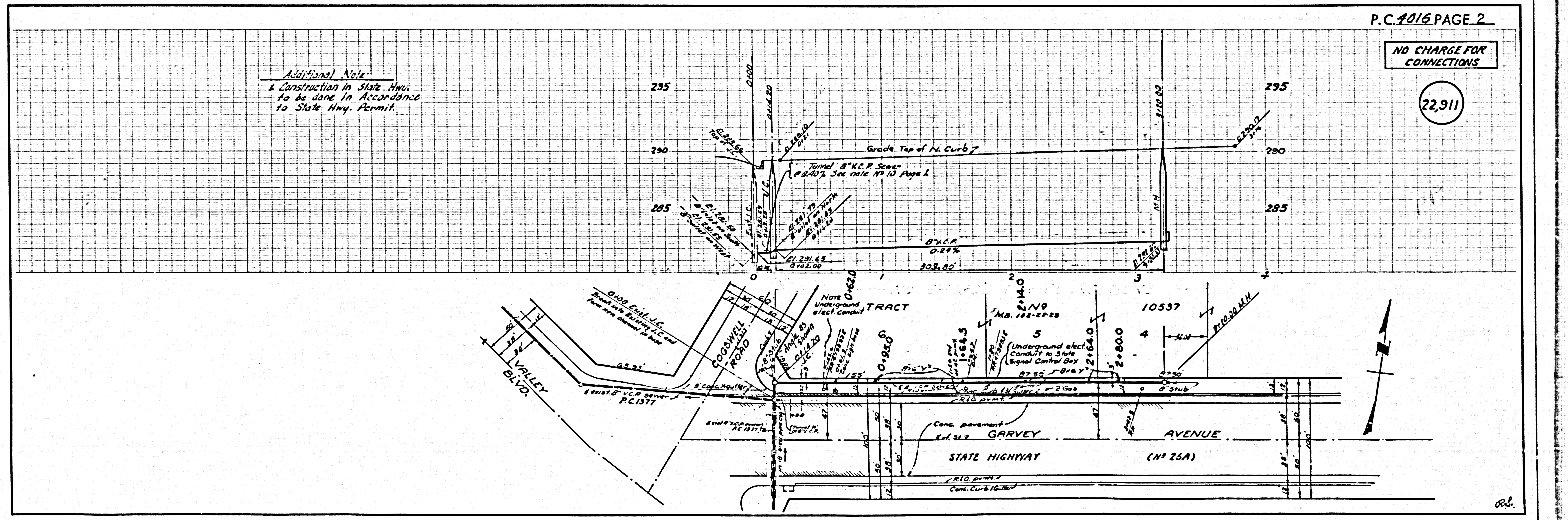
NOTES:
 GRADE TO WHICH THIS IMPROVEMENT IS TO BE CONSTRUCTED ARE SHOWN ON PLANS AND PROFILE GRADE POINTS FOR TOP OF CURB, CENTER LINE OF STREET, OR CENTER LINE OF ALLEYS ARE SHOWN BY CIRCLES ON PROFILES AT ALL POINTS BETWEEN DESIGNATED POINTS THE GRADE SHALL BE ESTABLISHED SO AS TO CONFORM TO A STRAIGHT LINE DRAWN BETWEEN SAID DESIGNATED POINTS.
 ELEVATIONS ARE IN FEET ABOVE M.S.L. UNLESS OTHERWISE SPECIFIED.
 THIS DRAWING AND THE DATA HEREON ARE HEREBY MADE A PART OF THE SPECIFICATIONS OF THE COUNTY ENGINEER AND SHALL BE PROSECUTED ONLY IN THE INTEREST OF THE COUNTY ENGINEER.
 BEFORE WORK CAN BE STARTED, THE CONTRACTOR MUST OBTAIN A PERMIT TO EXCAVATE IN COUNTY STREETS FROM THE L. A. COUNTY ROAD DEPT. FOR THE WORK TO BE DONE WITHIN THE COUNTY ENGINEER'S BOOK 284 FROM AMERICAN BLANKING 255 SO BROADWAY SUPPLEMENT TO COVER THE COST OF CONSTRUCTION INSPECTION AND RECORD PLANS.
 APPROVAL OF THIS PLAN BY THE COUNTY OF LOS ANGELES DOES NOT CONSTITUTE A REPRESENTATION AS TO THE ACCURACY OF THE LOCATION OF OR THE EXISTENCE OR NON-EXISTENCE OF ANY UNDERGROUND utility pipe, OR STRUCTURE WITHIN THE LIMITS OF THIS PROJECT THIS NOTE APPLIES TO ALL PAGES.
 IF WORK IS TO BE DONE IN A STATE HIGHWAY, A PERMIT MUST BE OBTAINED FROM THE STATE OF CALIFORNIA. ANY SIGN OF HIGHWAY, 128 SOUTH SPRING STREET.

COUNTY OF LOS ANGELES, CALIFORNIA

APPROVED, JOHN A. LAMBE, COUNTY ENGINEER APPROVED, A. M. BAWN, CHIEF ENGINEER
 REG. SAN. DIST. NO. 15

By B.A. Hughes REG. SANITATION ENGINEER By J. Postma OFFICE ENGINEER
 CHECKED BY SK Onda 6-4-56 OFFICE OF COUNTY ENGINEER, 808 C. E. NO. 2406

Checked 6-18-56 M. Moran



P.C. 4016 PAGE 2

NO CHARGE FOR CONNECTIONS

(22911)