

LENNOX BLDG. DIST. NO. 7

PROFILE ALIGNMENT AND GRADE OF P.C. 4017
 SANITARY SEWERS PAGE 1

TO BE CONSTRUCTED IN
 VERMONT AVENUE CROSSING

PRIVATE CONTRACT NO. 4017

W.S. 26
 1 SHEETS, 2 PAGES

SCALE: 1" = 10' HORIZ. 1" = 5' VERT.

PREPARED IN THE OFFICES OF

Edsworth J. Peterson
 REG. E. NO. 5320

FOR LEGEND SEE PLAN NO. S.A-64

NOTE:
 GRADES TO WHICH THIS IMPROVEMENT IS TO BE CONSTRUCTED ARE SHOWN ON PLANS AND PROFILE GRADE POINTS FOR BOX OF CURBS, CENTER LINE OF STREETS, OR CENTER LINE OF ALLEYS ARE SHOWN BY CIRCLES ON PROFILES AT ALL POINTS BETWEEN DESIGNATED POINTS THE GRADE SHALL BE ESTABLISHED TO BE TO CORRESPOND TO A STRAIGHT LINE PLANE BETWEEN SAID DESIGNATED POINTS.
 ELEVATIONS ARE IN FEET ABOVE U.S. & G.S. SEA LEVEL DATUM AS OF 1929.
 THE DRAWING AND THE DATA HEREON ARE HEREBY MADE A PART OF THE SPECIFICATIONS.
 WORK SHALL BE CONSTRUCTED ACCORDING TO SPECIFICATIONS ON FILE IN THE OFFICE OF THE COUNTY ENGINEER AND SHALL BE PROSECUTED ONLY IN THE PRESENCE OF THE COUNTY ENGINEER.
 BEFORE WORK CAN BE STARTED, THE CONTRACTOR MUST OBTAIN A PERMIT TO EXCAVATE IN COUNTY STREETS FROM THE L. & C. COUNTY ROAD DEPT., 128 W. 2ND ST. AND MAKE A DEPOSIT WITH THE COUNTY ENGINEER, ROOM 324 PAN AMERICAN BUILDING, 332 SO. BROADWAY SUFFICIENT TO COVER THE COST OF CONSTRUCTION INSPECTION AND RECORD PLANS.
 APPROVAL OF THIS PLAN BY THE COUNTY OF LOS ANGELES DOES NOT CONSTITUTE A REPRESENTATION AS TO THE ACCURACY OF THE LOCATION OF OR THE EXISTENCE OR NON-EXISTENCE OF ANY UNDERGROUND UTILITY PIPE, OR STRUCTURE WITHIN THE LIMITS OF THIS PROJECT. THIS NOTE APPLIES TO ALL PAGES.
 IF WORK IS TO BE DONE IN A STATE HIGHWAY, A PERMIT MUST BE OBTAINED FROM THE STATE OF CALIFORNIA, DIVISION OF HIGHWAYS, 128 SOUTH SPRING STREET.

COUNTY OF LOS ANGELES, CALIFORNIA

APPROVED, JOHN A. LAMBE, COUNTY ENGINEER

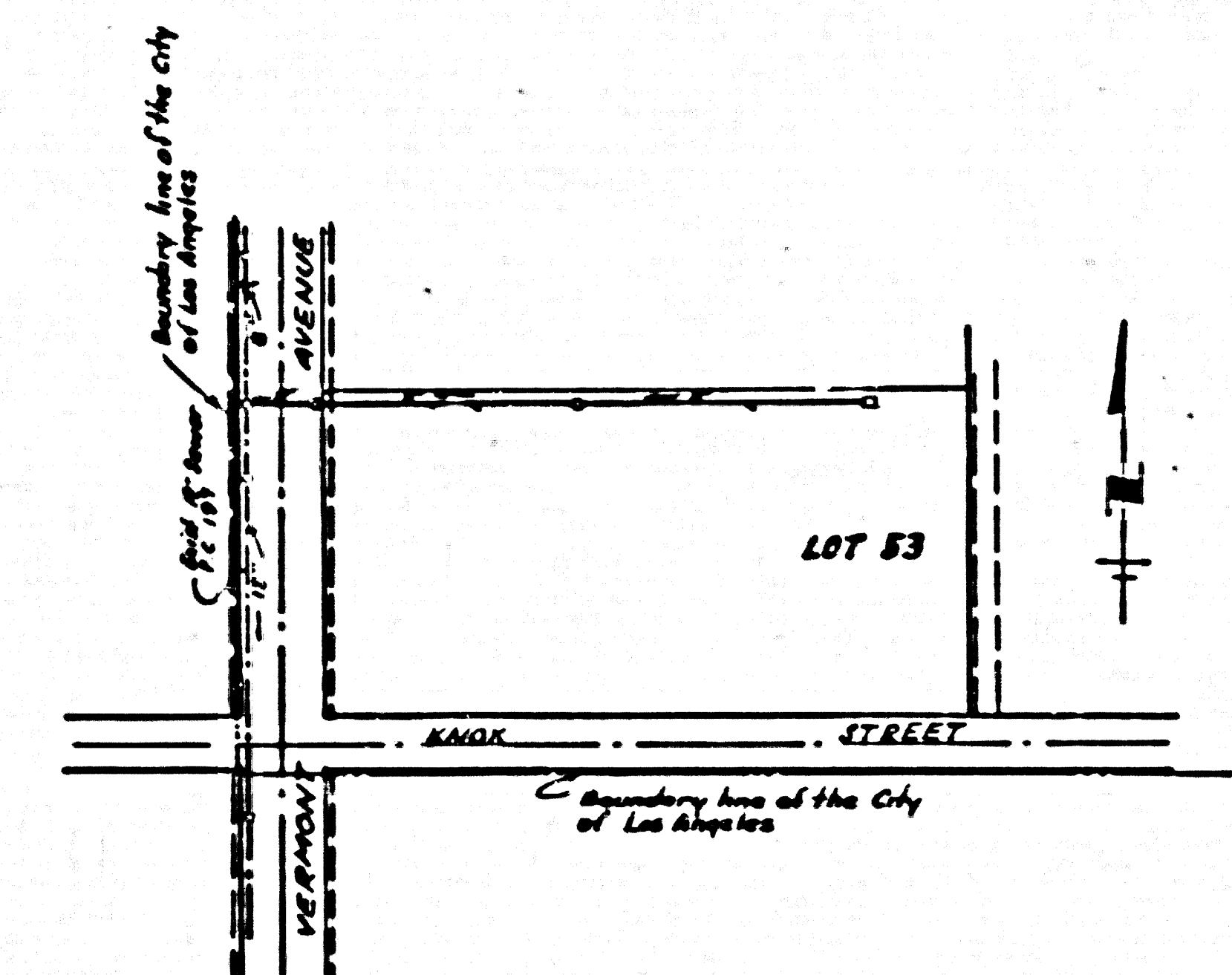
APPROVED, A. M. BAWN, CHIEF ENGINEER

BY *J.P. Adams* SANITATION ENGINEER

CHECKED BY *P. Kuhler* 5-28-56

OFFICE OF COUNTY ENGINEER, REG. C. E. NO. 7860

- NOTES
- PROVIDE STAKES ON THE PROPERTY LINE OR PROPERTY LINES PRODUCED AT RIGHT ANGLES TO THE SEWER LINE AT THE CENTER LINE OF EACH BRANCH.
 - NO REPRESENTATIVE OF THE COUNTY ENGINEER WILL SURVEY OR LAYOUT ANY PORTION OF THE WORK.
 - THE OWNER OR HIS AUTHORIZED REPRESENTATIVE SHALL FURNISH THE COUNTY ENGINEER WITH GRADE SHEETS AND STATIONING FOR ALL HOUSE LATERALS AND T BRANCHES AND SHALL PROVIDE STAKES FOR THEM AT THEIR PROPER LOCATIONS WITH STATIONING PLAN-IF MARKED. ANY CHANGE IN LOCATION SHALL BE REQUESTED IN WRITING BY THE OWNER OR HIS REPRESENTATIVE.
 - NO REVISIONS SHALL BE MADE IN THESE PLANS WITHOUT THE APPROVAL OF THE COUNTY ENGINEER.
 - USE STANDARD MANHOLE FRAMES AND COVERS, S.A. 117, EXCEPT AS NOTED.
 - USE STANDARD BRICKS WITH POINTS EXCEPT AS NOTED.
 - USE CONCRETE MORTAR FOR ALL VISIBLE CLAY JOINTS.
 - RESURFACE ALL TRENCH WITHIN PAVED AREA TO MEET L. & C. COUNTY ROAD DEPT. OR CALIF. STATE HIGHWAY DEPT. REQUIREMENTS IN ACCORDANCE WITH PERMITS.
 - BRICKS FOUR FEET OF SEWER AT POINTS OF INTERFERENCE WITH POLES, S.A. 119.
 - ALL STRUCTURES SHALL BE BRICK SEWER STRUCTURES, S.A. 104, EXCEPT AS NOTED.
 - FOR ALLOWABLE LEAKAGE TEST USE FORMULA NO. 1, M.P.C.S., M.C. 17.
 - MANHOLE TOPS 14" UNIMPROVED RIGHTS-OF-WAY TO BE 6" ABOVE FINISHED GRADE.



INDEX MAP
 TRACT NO. 4674
 SCALE 1" = 200'

NO CHARGE
 FOR CONNECTIONS
5-28-56

B. M. 51 - 3029
 Vol. No. 5 Pg. 1541 Fd. City of Los Angeles
 1st. Div. 18 concrete post flush, 9' 4" curbs,
 of centerline road of Knox Street 150' North
 of pole No. 46503 T 11' West of West curb Normandie
 Ave. 117' East of East rail of F. E. R.
 Elevation 48.532 - Adjusted 1953

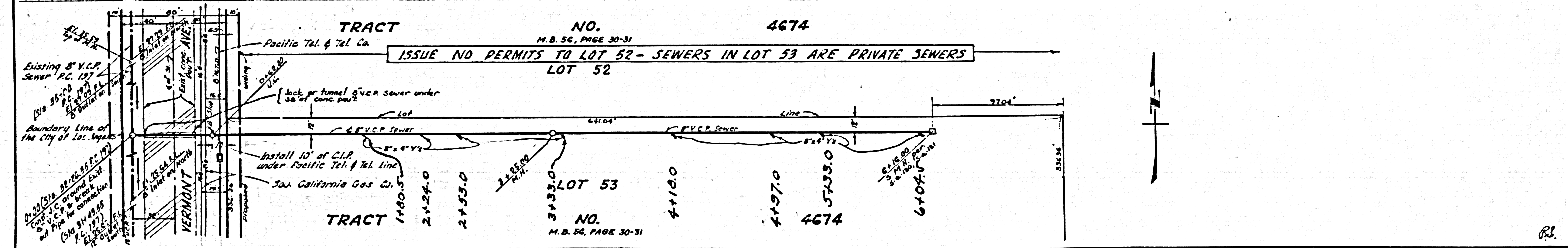
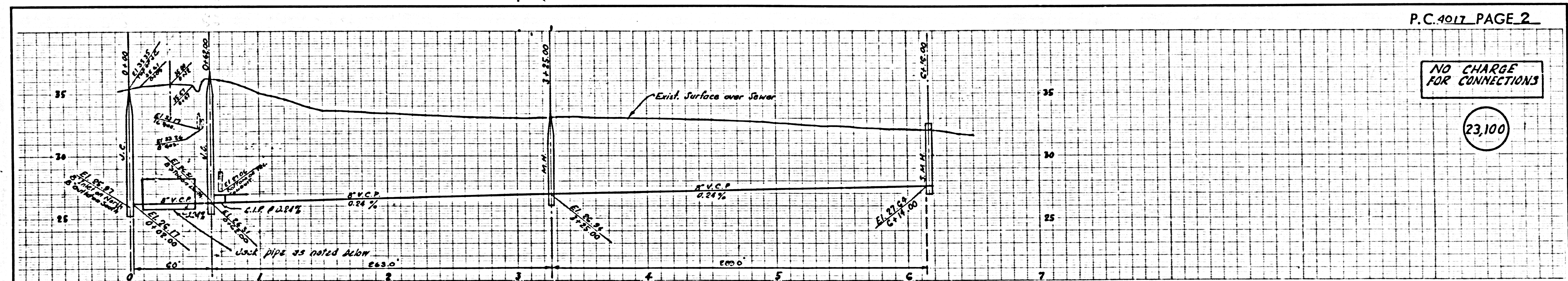
INDUSTRIAL WASTE DIVISION
 Approved by *William T. Beck* 5/28/56

Checked 7-30-56 *M. H. ...*

P.C. 4017 PAGE 2

NO CHARGE
 FOR CONNECTIONS

23,100



ISSUE NO PERMITS TO LOT 52 - SEWERS IN LOT 53 ARE PRIVATE SEWERS

PS